



# Lenovo TAB 2 A8-50

## Safety, Warranty & Quick Start Guide V1.0

Lenovo TAB 2 A8-50F

Lenovo TAB 2 A8-50L

Lenovo TAB 2 A8-50LC

- Read this guide carefully before using your Lenovo TAB 2 A8-50.  
All information labeled with \* in this guide refers only to the LTE model (Lenovo TAB 2 A8-50L/Lenovo TAB 2 A8-50LC).  
The device could be used with a separation distance of 0 cm to the human body.

# Technical specifications

Lenovo TAB 2 A8-50	
<b>Model &amp; version</b>	Model: Lenovo TAB 2 A8-50F; Version: WLAN
	*Model: Lenovo TAB 2 A8-50L; *Version: LTE
	*Model: Lenovo TAB 2 A8-50LC; *Version: LTE (Voice)
<b>System</b>	Android
<b>Ⓜ Dimensions &amp; Weight</b>	Height: 212.3 mm (8.36 inches) Width: 125.6 mm (4.94 inches) Depth: 9.3 mm (0.37 inch) Weight: 353.4 g (0.78 lb)
<b>CPU</b>	MTK MT8161, Quad Core 1.3 GHz *MTK MT8735, Quad Core 1.3 GHz
<b>Camera</b>	5 megapixels AF (back) + 2 megapixels FF (front)
<b>Battery</b>	4290 mAh
<b>Display</b>	Size: 8 inches Resolution: 1280 × 800
<b>Wireless communication</b>	Bluetooth 4.0 WLAN 802.11 b/g/n GPS/GLONASS Ⓜ *LTE, WCDMA, GSM

① Depending on the measuring method, the weight might vary slightly.

② Your Lenovo TAB 2 A8-50 supports LTE Band 1, 3, 7, 8 and 20. But in some countries, LTE is not supported. To know if your Lenovo TAB 2 A8-50 works with LTE networks in your country, contact your carrier.

## First glance



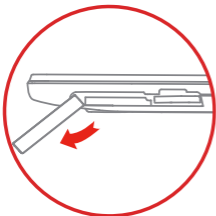
- |    |                    |    |                   |   |                      |
|----|--------------------|----|-------------------|---|----------------------|
| 1  | Front camera       | 2  | Speaker/*Receiver | 3 | Volume key           |
| 4  | On/Off button      | 5  | Speaker           | 6 | Back camera          |
| 7  | Micro USB          | 8  | Earphone jack     | 9 | *Micro SIM card slot |
| 10 | Micro SD card slot | 11 | Microphone        |   |                      |

🔗 The WLAN model (Lenovo TAB 2 A8-50F) does not have a Micro SIM card slot.  
Only LTE (Voice) model (Lenovo TAB 2 A8-50LC) has a receiver.

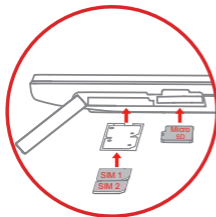
## Preparing your Lenovo TAB 2 A8-50

You can use cellular services with the LTE model ( Lenovo TAB 2 A8-50L/Lenovo TAB 2 A8-50LC ) by inserting the Micro SIM card provided by your carrier.

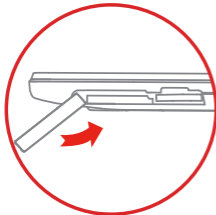
Install the Micro SIM card and the Micro SD card as shown.



**Step 1.** Lift the bracket.



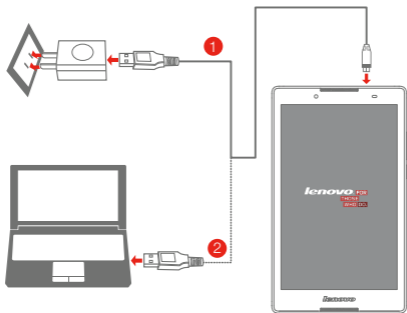
**Step 2.** Pull out the Micro-SIM-card tray and position the Micro SIM card into the tray in correct orientation, then carefully insert the tray with the installed Micro SIM card back into the Micro SIM card slot. Insert the Micro SD card into the Micro SD slot.



**Step 3.** Push back the bracket.

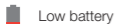
# Starting to use your Lenovo TAB 2 A8-50

Before using your Lenovo TAB 2 A8-50, you might need to charge the battery. Charge the battery as shown.



**Method 1.** Connect your Lenovo TAB 2 A8-50 to a power outlet using the included cable and USB power adapter.

**Method 2.** Charge the battery using a computer.



Low battery



Fully charged



Charging

## Turning on/off

---



**Turn on:** Press and hold the On/Off button until the Lenovo logo appears.

**Turn off:** Press and hold the On/Off button for a few seconds, then tap **Power off**.

## Taking screenshots

---

Press and hold the On/Off button and the volume down button at the same time.

# Read before using your tablet

The following sections provide critical safety and regulatory information for Lenovo tablets and instructions on how to access electronic versions of the publications developed for your tablet.

## Read first-Regulatory information

Device models equipped with wireless communications comply with the radio frequency and safety standards of any country or region in which it has been approved for wireless use. In addition, if your product contains a telecom modem, it complies with the requirements for connection to the telephone network in your country.

Be sure to read the **Regulatory Notice** for your country or region before using the wireless devices contained in your device. To obtain a PDF version of the **Regulatory Notice**, refer to the “**Downloading publications**” section below.

## Downloading publications

Electronic versions of your publications are available from the <http://support.lenovo.com>. To download the publications for your device, go to: <http://support.lenovo.com> and follow the instructions on the screen.

## Accessing your User Guide

Your **User Guide** contains detailed information about your device. To access your **User Guide**, go to: <http://support.lenovo.com> and follow the instructions on the screen.

## Service and Support information

The following information describes the technical support that is available for your product, during the warranty period or throughout the life of your product. Refer to the Lenovo Limited Warranty for a full explanation of Lenovo warranty terms. See “Lenovo Limited Warranty notice” later in this document for details on accessing the full warranty.

### Online technical support

Online technical support is available during the lifetime of a product at <http://www.lenovo.com/support>.

### Telephone technical support

You can get help and information from the Customer Support Center by telephone. Before contacting a Lenovo technical support representative, please have the following information available: model and serial number, the exact wording of any error message, and a description of the problem.

Your technical support representative might want to walk you through the problem while you are at your device during the call.

## Worldwide Lenovo Support telephone list

**Important:** Telephone numbers are subject to change without notice. The most up-to-date telephone list for the Customer Support Center is always available at <http://www.lenovo.com/support/phone>.

If the telephone number for your country or region is not listed, contact your Lenovo reseller or Lenovo marketing representative.

## Important safety and handling information

### Plastic bag notice

#### **DANGER:**

Plastic bags can be dangerous. Keep plastic bags away from babies and children to avoid danger of suffocation.

### Built-in rechargeable battery notice

#### **DANGER:**

Do not attempt to replace the internal rechargeable lithium ion battery. Contact Lenovo Support for factory replacement.

### Polyvinyl Chloride (PVC) cable and cord notice

**WARNING:** Handling the cord on this product or cords associated with accessories sold with this product will expose you to lead, a chemical known to the State of California to cause cancer, and birth defects or other reproductive harm. Wash hands after handling.

### Prevent hearing damage

Your device has a headphone connector. Always use the headphone connector for headphones (also called a headset) or earphones.

#### **CAUTION:**

**Excessive sound pressure from earphones and headphones can cause hearing loss. Adjustment of the equalizer to maximum increases the earphone and headphone output voltage and the sound pressure level. Therefore, to protect your hearing, adjust the equalizer to an appropriate level.**

Excessive use of headphones or earphones for a long period of time at high volume can be dangerous if the output of the headphone or earphone connectors do not comply with specifications of EN 50332-2.

The headphone output connector of your device complies with EN 50332-2 Sub clause 7. This specification limits the device's maximum wide band true RMS output voltage to 150 mV. To help protect against hearing loss, ensure that the headphones or earphones you use also comply with EN 50332-2 (Clause 7 limits) for a wide band characteristic voltage of 75 mV. Using headphones that do not comply with EN

50332-2 can be dangerous due to excessive sound pressure levels.

If your device came with headphones or earphones in the package, as a set, the combination of the headphones or earphones and the device already complies with the specifications of EN 50332-1. If different headphones or earphones are used, ensure that they comply with EN 50332-1 (Clause 6.5 Limitation Values). Using headphones that do not comply with EN 50332-1 can be dangerous due to excessive sound pressure levels.

### **Sound pressure warning statement**

For the device that is tested in accordance with EN 60950-1:

2006+A11:2009+A1:2010+A12:2011, it is mandatory to perform audio tests for EN50332.

This device has been tested to comply with the Sound Pressure Level requirement laid down in the applicable EN 50332-1 and/or EN 50332-2 standards. Permanent hearing loss may occur if earphones or headphones are used at high volume for prolonged periods of time.



### **Warning statement:**

To prevent possible hearing damage, do not listen at high volume levels for a long period of time.

### **Warranty information**

#### **Lenovo Limited Warranty notice**

This product is covered by the terms of the Lenovo Limited Warranty, version L505-0010-02 08/2011. Read the Lenovo Limited Warranty (LLW) at [http://www.lenovo.com/warranty/llw\\_02](http://www.lenovo.com/warranty/llw_02). You can view the LLW in a number of languages from this Web site. If you cannot view the LLW from the Web site, contact your local Lenovo office or reseller to obtain a printed version of the LLW.

#### **Lenovo TAB 2 A8-50**

##### **Model & Version**

Model	Version
Lenovo TAB 2 A8-50F	WLAN
Lenovo TAB 2 A8-50L	LTE
Lenovo TAB 2 A8-50LC	LTE (Voice)



## Warranty period and type of Warranty service

Country or Region Purchase	Warranty Period	Type of Warranty Service
France, Germany, Italy, Austria, United Kingdom, Israel, Australia, New Zealand	parts and labor - 1 year Battery Pack - 1 year	1,3
Serbia, Costa Rica, Venezuela, Peru, Uruguay, Ecuador, Colombia, Chile, Argentina, Indonesia, Vietnam, India, Malaysia, Thailand, Philippines, Singapore, Hong Kong	parts and labor - 1 year Battery Pack - 1 year	1,4
Russia, Ukraine, Egypt, Lebanon, Morocco, South Africa, Tunisia, Mauritius, Mozambique, United Arab Emirates, Jordan, Kenya, Nigeria, Uganda, Ghana, Oman, Tanzania, Namibia	parts and labor - 1 year Battery Pack - 1 year	4
Poland, Hungary, Romania, Bulgaria, Greece, Croatia, Slovenia, Slovakia, Cyprus, United States of America, Canada, Mexico, Japan	parts and labor - 1 year Battery Pack - 1 year	1,5
Panama	parts and labor - 1 year Battery Pack - 1 year	2,4
Taiwan, South Korea	parts and labor - 1 year Battery Pack - 1 year	3,4
Brazil	parts and labor - 1 year Battery Pack - 1 year	2,5
Spain, Switzerland, Portugal, Netherlands, Belgium, Sweden, Denmark, Norway, Finland, Estonia, Latvia, Lithuania, Iceland	parts and labor - 2 year Battery Pack - 1 year	1,3
Czech Republic	parts and labor - 2 year Battery Pack - 1 year	1,5
Turkey	parts and labor - 2 year Battery Pack - 1 year	3,4
Saudi Arabia	parts and labor - 2 year Battery Pack - 1 year	4

\* Excludes some components. 90-day limited warranty for power adapters, keyboards, plastics and hinges.

## Types of Warranty Service

1. Customer Replaceable Unit ("CRU") Service
2. On-site Service
3. Courier or Depot Service
4. Customer Carry-In Service
5. Mail-in Service
6. Customer Two-Way Mail-in Service
7. Product Exchange Service

For a full explanation of the types of warranty service, refer to the full warranty. See "**Lenovo Limited Warranty notice**" for details on accessing the full warranty.

## Environmental, recycling, and disposal information

### General recycling statement

Lenovo encourages owners of information technology (IT) equipment to responsibly recycle their equipment when it is no longer needed. Lenovo offers a variety of programs and services to assist equipment owners in recycling their IT products. For information on recycling Lenovo products, go to: <http://www.lenovo.com/recycling>.

### Important WEEE information



Electrical and electronic equipment marked with the symbol of a crossed-out wheeled bin may not be disposed as unsorted municipal waste. Waste of electrical and electronic equipment (WEEE) shall be treated separately using the collection framework available to customers for the return, recycling, and treatment of WEEE.

Country-specific information is available at:  
<http://www.lenovo.com/recycling>.

### Recycling information for Japan

Recycling and disposal information for Japan is available at:  
<http://www.lenovo.com/recycling/japan>.

### Additional recycling statements

Additional information about recycling device components and batteries is in your **User Guide**. See "**Accessing your User Guide**" for details.

### Battery recycling marks

#### The battery recycling information of Taiwan



廢電池請回收

For better environmental protection, waste batteries should be collected separately for recycling or special disposal.

#### Battery recycling information for the United States and Canada



US & Canada Only

## Battery recycling information for the European Union



Energy efficiency mark



## Restriction of Hazardous Substances Directive (RoHS)

### Turkish

The Lenovo product meets the requirements of the Republic of Turkey Directive on the Restriction of the Use of Certain Hazardous Substances in Waste Electrical and Electronic Equipment (WEEE).

#### **Türkiye AEEE Yönetmeliğine Uygunluk Beyanı**

Bu Lenovo ürünü, T.C. Çevre ve Orman Bakanlığı'nın "Atık Elektrikli ve Elektronik Eşya Bazı Zararlı Maddelerin Kullanımının Sınırlanmasına Dair Yönetmelik (AEEE)" direktiflerine uygundur. AEEE Yönetmeliğine Uygundur.

### Ukraine

Цим підтверджуємо, що продукція Леново відповідає вимогам нормативних актів України, які обмежують вміст небезпечних речовин

### India

RoHS compliant as per E-Waste (Management & Handling) Rules, 2011.

### Vietnam

Lenovo products sold in Vietnam, on or after September 23, 2011, meet the requirements of the Vietnam Circular 30/2011/TT-BCT ("Vietnam RoHS").

### European Union

Lenovo products sold in the European Union, on or after 3 January 2013 meet the requirements of Directive 2011/65/EU on the restriction of the use of certain hazardous substances in electrical and electronic equipment ("RoHS recast" or "RoHS 2").

For more information about Lenovo progress on RoHS, go to:

[http://www.lenovo.com/social\\_responsibility/us/en/RoHS\\_Communication.pdf](http://www.lenovo.com/social_responsibility/us/en/RoHS_Communication.pdf)

### Notice for users in Mexico

La operación de este equipo está sujeta a las siguientes dos condiciones:

- (1) es posible que este equipo o dispositivo no cause interferencia perjudicial y
- (2) este equipo o dispositivo debe aceptar cualquier interferencia, incluyendo la que pueda causar su operación no deseada.

### EurAsia compliance mark



## Learning more

To learn more information about your Lenovo TAB 2 A8-50 functions, please access "User Guide" from the Browser favorites in your tablet. To obtain the "Regulatory Notices", go to <http://support.lenovo.com/>.

### Getting support

For support on network service and billing, contact your wireless network operator. For instructions on how to use your Lenovo TAB 2 A8-50, go to <http://support.lenovo.com/>.

### European Union conformity

# CE 0560

### Radio and Telecommunications Terminal Equipment Directive

This product is in compliance with the essential requirements and other relevant provisions of the Radio and Telecommunications Terminal Equipment Directive, 1999/5/EC.

### Legal notices

Lenovo and the Lenovo logo are trademarks of Lenovo in the United States, other countries, or both.

Other company, product, or service names may be trademarks or service marks of others.

Manufactured under license from Dolby Laboratories. Dolby and the double-D symbol are trademarks of Dolby Laboratories.

LIMITED AND RESTRICTED RIGHTS NOTICE: If data or software is delivered pursuant a General Services Administration "GSA" contract, use, reproduction, or disclosure is subject to restrictions set forth in Contract No. GS-35F-05925.

First Edition (May 2015)  
© Copyright Lenovo 2015.

**Reduce | Reuse | Recycle**



XXXXXXXXXX

Printed in China