

**lenovo**

# Lenovo S5000

## Quick Start Guide v1.0

- Read this guide carefully before using your tablet.  
All information labeled with \* in this guide refers only to the WLAN + 3G model (Lenovo S5000-H).

# Technical specifications



## Model and system

Model: Lenovo S5000-F;  
60039; ZOAC

Version: WLAN

System: Android 4.2

\*Lenovo S5000-H;

\*60040; ZOAD

\*WLAN + 3G



## Size and weight

Height: 191 mm    Width: 116 mm    Depth: 7.9 mm

Weight: 246 g    \*249 g



## CPU

CPU: MTK 8125 Quad Core 1.2 GHz

\*MTK 8389 Quad Core 1.2 GHz



## Camera

Type: CMOS

Pixels: 5 MP Autofocus (back)+ 1.6 MP (front)



## Power and battery

Battery: 3450 mAh



## Display

Size: 7 inches (diagonal)

Resolution: 1280 × 800

Screen: Multi-touch display

LCD type: IPS



## Wireless communication

②Bluetooth 4.0

WLAN 802.11b/g/n

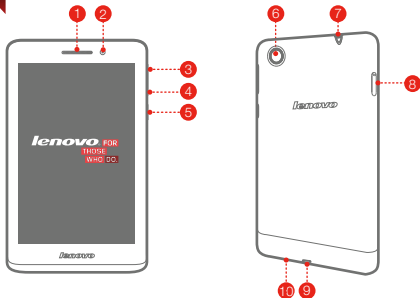
\*WCDMA, GSM



## GPS

- ① Actual product may differ.  
② Launch with Android 4.2 which only supports BT 4.0 PXP profile.

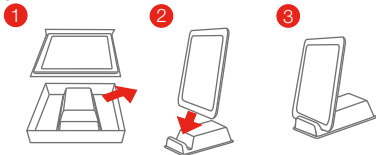
# First glance



- 1 Receiver / Speaker
- 2 Front camera
- 3 Volume up
- 4 Volume down
- 5 On/Off button
- 6 Back camera
- 7 Earphone jack
- 8 \*Micro SIM card slot
- 9 Micro USB
- 10 Microphone

## Free Tablet Stand

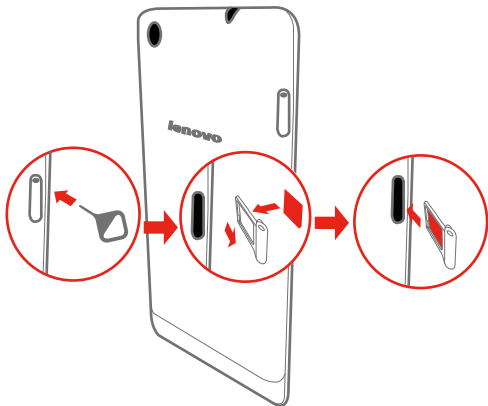
You can get a free tablet stand that is made of recyclable paper from the packing box.



- \* The WLAN model (Lenovo S5000-F) does not have a Micro SIM card slot.

## \*Installing the Micro SIM card

You can use cellular services with the WLAN + 3G model (Lenovo S5000-H) by inserting the Micro SIM card provided by your carrier services. Install the Micro SIM card as shown.



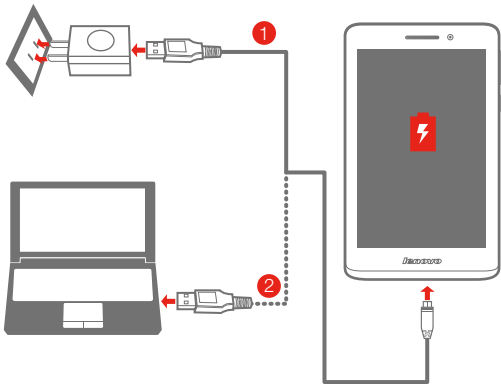
- Step 1.** Insert the SIM eject tool into the hole on the Micro SIM card tray.
- Step 2.** Pull out the Micro SIM card tray and place the Micro SIM card in the tray.
- Step 3.** Carefully replace the tray.

ⓘ Only Micro SIM cards work with your tablet and Micro SIM cards are for mobile data only.

Do not insert or remove the SIM card while your tablet is turned on. Doing so may permanently damage your Micro SIM card or tablet.


# Charging the battery


Before using your tablet, you might need to charge the battery. Charge the battery as shown.




**Method 1.** Connect your tablet to a power outlet using the included cable and USB power adapter.

**Method 2.** Charge the battery using a computer.

 Low battery

 Fully charged

 Charging

 For more information about battery safety, see the *Important Product Information Guide*.

## Learn more

For more information about your tablet functions, please refer to the “Feature Guide” app in your tablet.  
For “Regulatory Notices” and other useful manuals, please access “User Guide” from the Browser favorites in your tablet.

### Getting support

For support on network service and billing, please contact your wireless network operator. For instructions on how to use your tablet, go to <http://support.lenovo.com/>.

### European Union conformity



### Radio and Telecommunications Terminal Equipment Directive

This product is in compliance with the essential requirements and other relevant provisions of the Radio and Telecommunications Terminal Equipment Directive, 1999/5/EC.

### Legal notices

Lenovo and the Lenovo logo are trademarks of Lenovo in the United States, other countries, or both.

Other company, product, or service names may be trademarks or service marks of others.

First Edition (Sep.2013)

© Copyright Lenovo 2013.

LIMITED AND RESTRICTED RIGHTS NOTICE: If data or software is delivered pursuant a General Services Administration “GSA” contract, use, reproduction, or disclosure is subject to restrictions set forth in Contract No. GS-35F-05925.

### Reduce | Reuse | Recycle



5SC9A463LO  
Printed in China