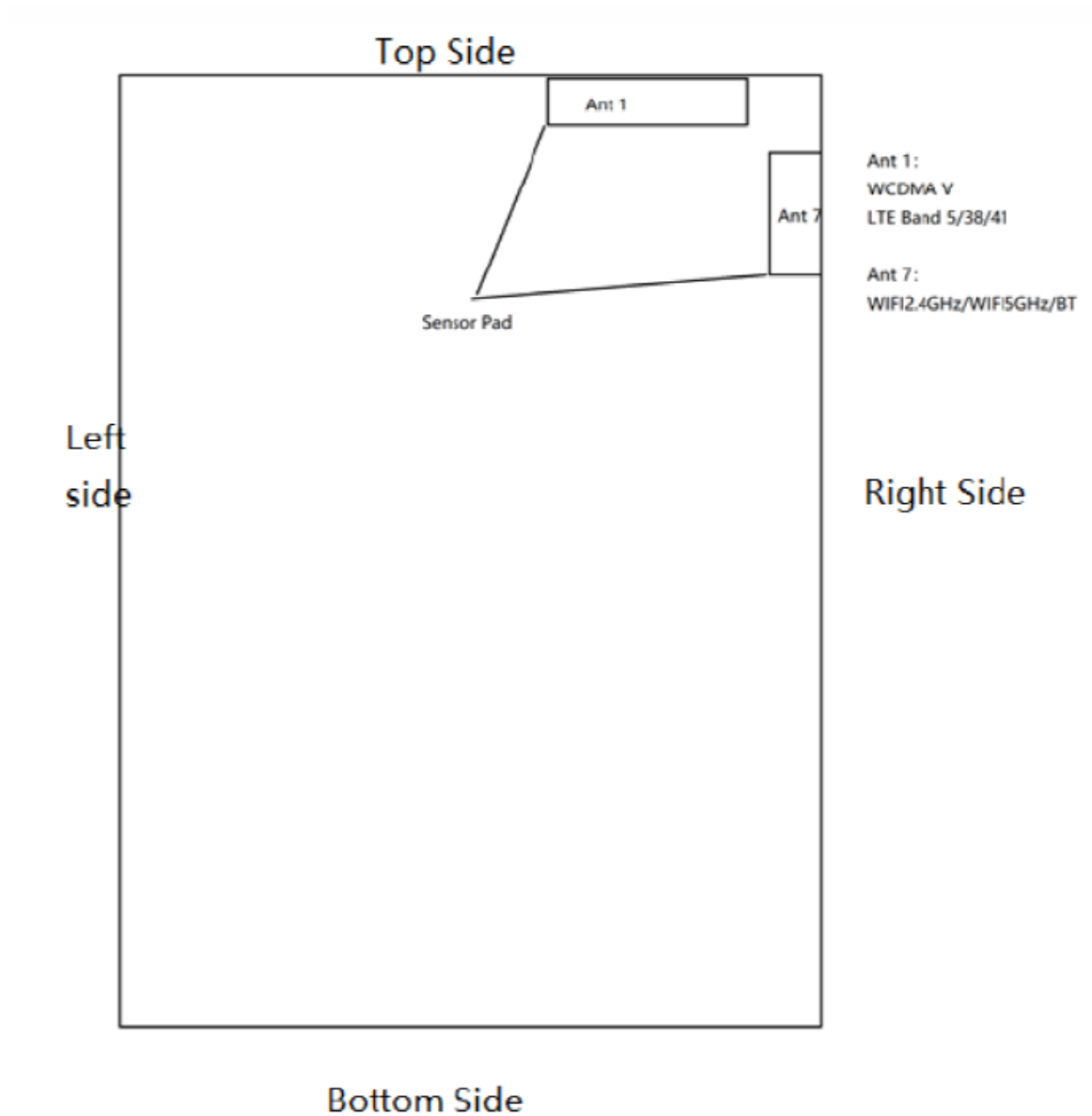


Antenna Product Specification

Model Name	HB286ZJ
Frequency Channel	UMTS: B5 FDD-LTE: B5 TDD-LTE: B38/B41

1. Type of Antenna: PIFA

Antenna attachment type: Fixed/Internal mounted



2. Efficiency and Gain

ANT1- Efficiency and Gain

BAND	Peak Gain(dBi)	Average Gain(dB)
WCDMA B5, LTE B5	-0.53	-7.4

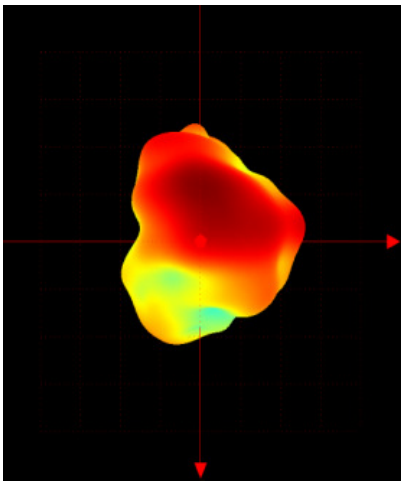
ANT7- Efficiency and Gain

Fre (MHZ)	Peak Gain(dBi)	Average Gain(dB)
2400~2483.5MHZ	1.5	-3.6
5150~5250MHZ	0.4	-5.9
5250~5350MHZ	0.3	-6.1
5470~5725MHZ	0.6	-5.8
5725~5850MHZ	0.6	-6

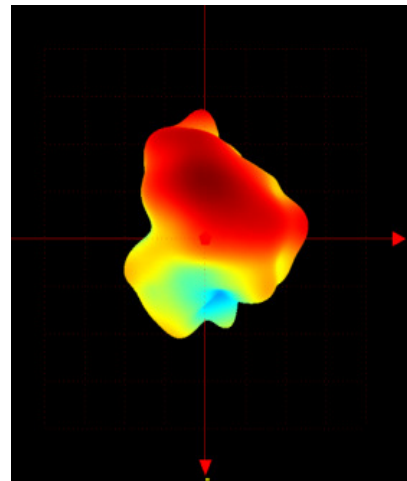
3. 3D Directional Pattern

ANT1-3D

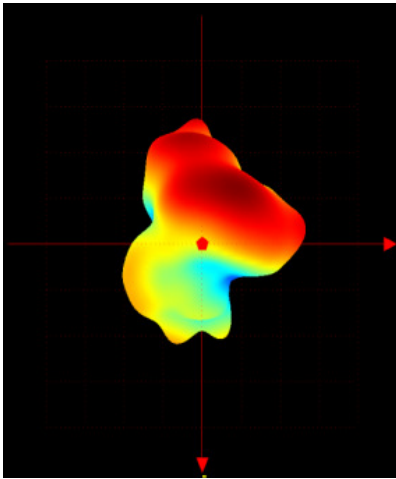
760 MHZ



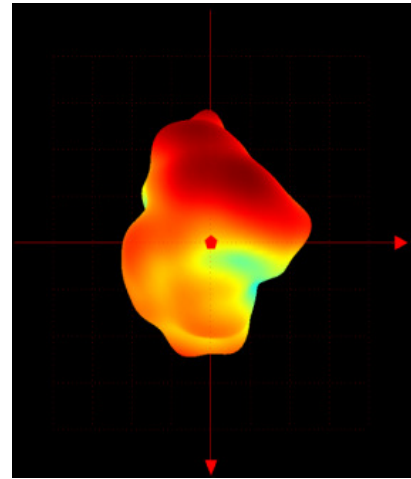
790MHZ



830MHZ

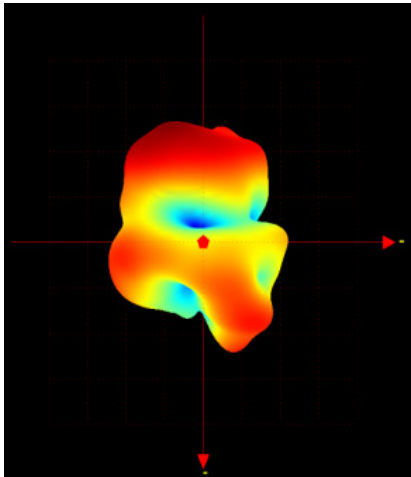


890MHZ

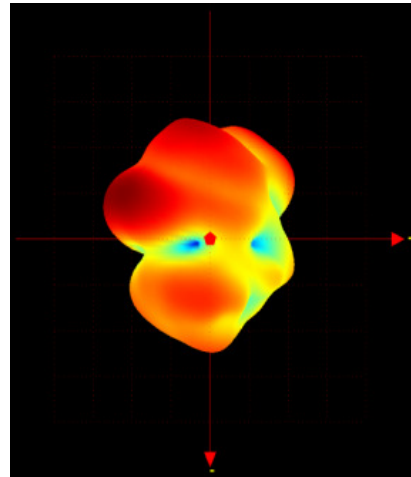


ANT7-3D

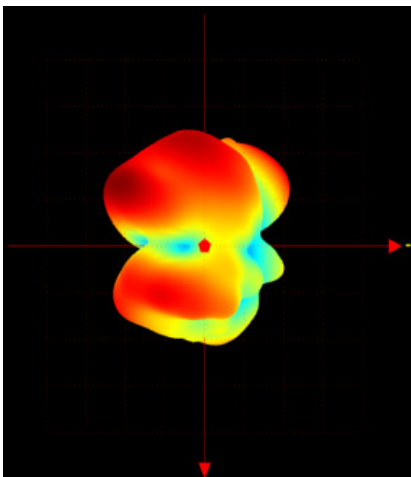
1575MHZ



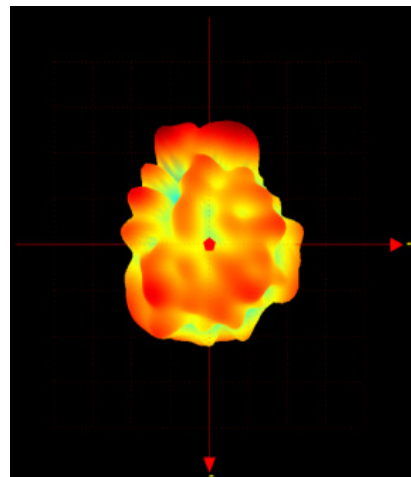
2400MHZ



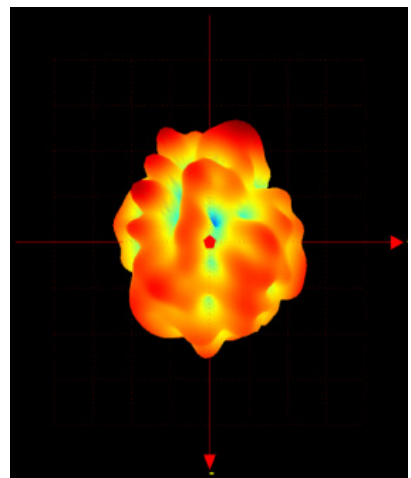
2500MHZ



5150MHZ



5350MHZ



5850MHZ

