

#01_LTE Band 2_20M_QPSK_1_99_Bottom Face_0mm_Ch18700

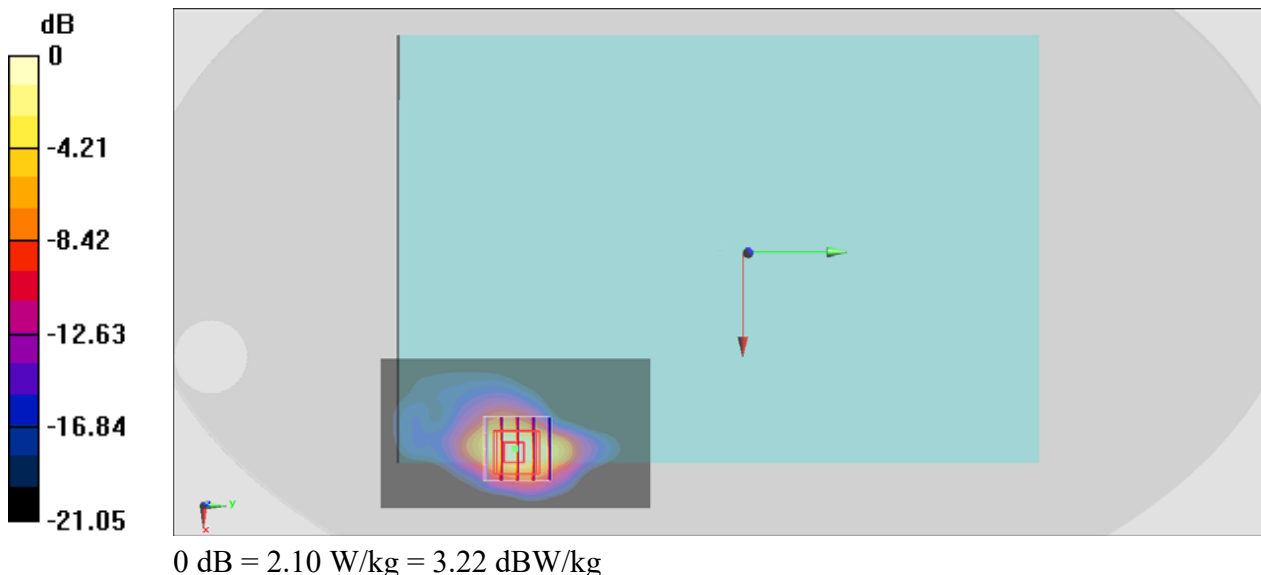
Communication System: LTE; Frequency: 1860 MHz; Duty Cycle: 1:1
Medium: HSL_1900_200927 Medium parameters used: $f = 1860$ MHz; $\sigma = 1.381$ S/m; $\epsilon_r = 39.343$;
 $\rho = 1000$ kg/m³
Ambient Temperature : 23.5 °C ; Liquid Temperature : 22.5 °C

DASY5 Configuration

- Probe: EX3DV4 - SN7306; ConvF(8.06, 8.06, 8.06) @ 1860 MHz; Calibrated: 2020/7/24
- Sensor-Surface: 1.4mm (Mechanical Surface Detection)
- Electronics: DAE4 Sn1399; Calibrated: 2020/2/18
- Phantom: ELI V4.0; Type: QDOVA001BB; Serial: 1041
- Measurement SW: DASY52, Version 52.10 (4); SEMCAD X Version 14.6.14 (7483)

Area Scan (51x91x1): Interpolated grid: dx=1.500 mm, dy=1.500 mm
Maximum value of SAR (interpolated) = 1.86 W/kg

Zoom Scan (5x5x7)/Cube 0: Measurement grid: dx=8mm, dy=8mm, dz=5mm
Reference Value = 22.30 V/m; Power Drift = -0.02 dB
Peak SAR (extrapolated) = 2.06 W/kg
SAR(1 g) = 0.98 W/kg; SAR(10 g) = 0.453 W/kg
Maximum value of SAR (measured) = 1.62 W/kg



#02_LTE Band 7_20M_QPSK_1_49_Bottom Face_0mm_Ch21350

Communication System: LTE; Frequency: 2560 MHz; Duty Cycle: 1:1

Medium: HSL_2600_200928 Medium parameters used: $f = 2560$ MHz; $\sigma = 1.957$ S/m; $\epsilon_r = 38.602$;
 $\rho = 1000$ kg/m³

Ambient Temperature : 23.6 °C ; Liquid Temperature : 22.6 °C

DASY5 Configuration

- Probe: EX3DV4 - SN7306; ConvF(7.34, 7.34, 7.34) @ 2560 MHz; Calibrated: 2020/7/24
- Sensor-Surface: 1.4mm (Mechanical Surface Detection)
- Electronics: DAE4 Sn1399; Calibrated: 2020/2/18
- Phantom: ELI V4.0; Type: QDOVA001BB; Serial: 1041
- Measurement SW: DASY52, Version 52.10 (4); SEMCAD X Version 14.6.14 (7483)

Area Scan (61x121x1): Interpolated grid: dx=1.200 mm, dy=1.200 mm

Maximum value of SAR (interpolated) = 1.78 W/kg

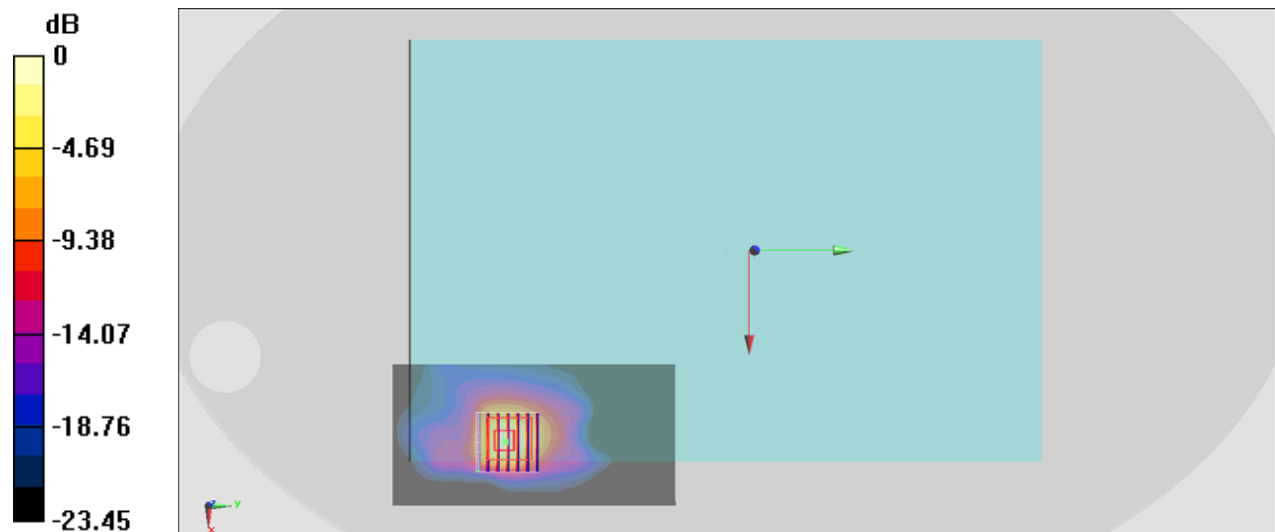
Zoom Scan (7x7x7)/Cube 0: Measurement grid: dx=5mm, dy=5mm, dz=5mm

Reference Value = 28.26 V/m; Power Drift = -0.10 dB

Peak SAR (extrapolated) = 4.42 W/kg

SAR(1 g) = 1.2: W/kg; SAR(10 g) = 0.64 W/kg

Maximum value of SAR (measured) = 3.: 9 W/kg



0 dB = 2.93 W/kg = 6.55 dBW/kg

#03_LTE Band 66_20M_QPSK_50_50_Bottom of Laptop_0mm_Ch132572

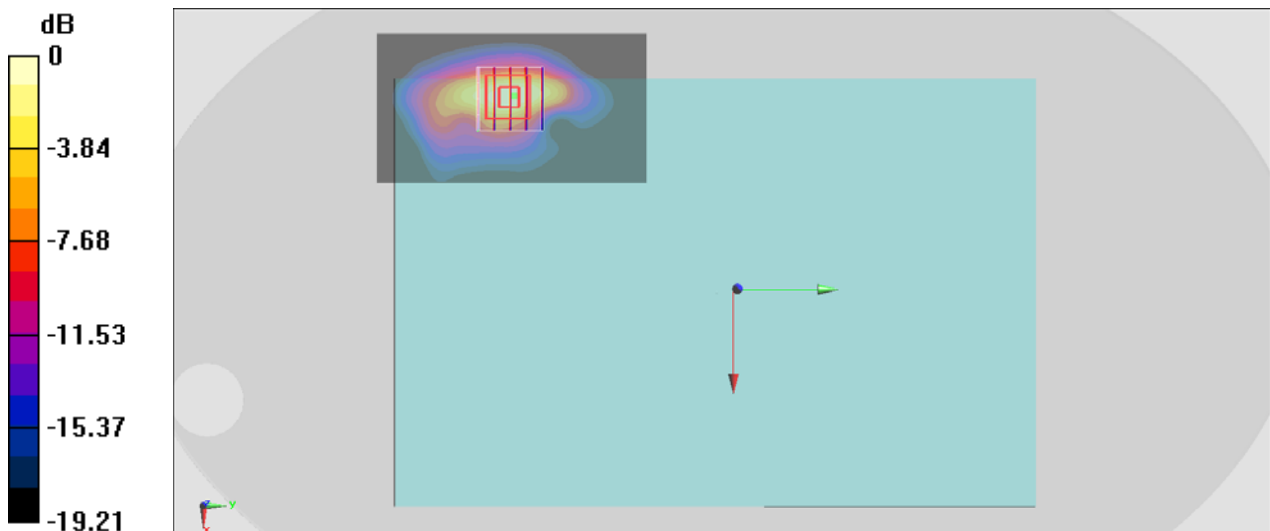
Communication System: LTE; Frequency: 1770 MHz; Duty Cycle: 1:1
Medium: HSL_1750_200929 Medium parameters used: $f = 1770$ MHz; $\sigma = 1.367$ S/m; $\epsilon_r = 40.302$;
 $\rho = 1000$ kg/m³
Ambient Temperature : 23.6 °C ; Liquid Temperature : 22.6 °C

DASY5 Configuration

- Probe: EX3DV4 - SN7306; ConvF(8.35, 8.35, 8.35) @ 1770 MHz; Calibrated: 2020/7/24
- Sensor-Surface: 1.4mm (Mechanical Surface Detection)
- Electronics: DAE4 Sn1399; Calibrated: 2020/2/18
- Phantom: ELI V4.0; Type: QDOVA001BB; Serial: 1041
- Measurement SW: DASY52, Version 52.10 (4); SEMCAD X Version 14.6.14 (7483)

Area Scan (51x91x1): Interpolated grid: dx=1.500 mm, dy=1.500 mm
Maximum value of SAR (interpolated) = 1.50 W/kg

Zoom Scan (5x5x7)/Cube 0: Measurement grid: dx=8mm, dy=8mm, dz=5mm
Reference Value = 25.16 V/m; Power Drift = 0.04 dB
Peak SAR (extrapolated) = 1.81 W/kg
SAR(1 g) = 0.902 W/kg; SAR(10 g) = 0.444 W/kg
Maximum value of SAR (measured) = 1.48 W/kg



0 dB = 1.48 W/kg = 1.70 dBW/kg

#04_FR1 n2_20M_BPSK_1_1_Bottom Face_0mm_Ch380000

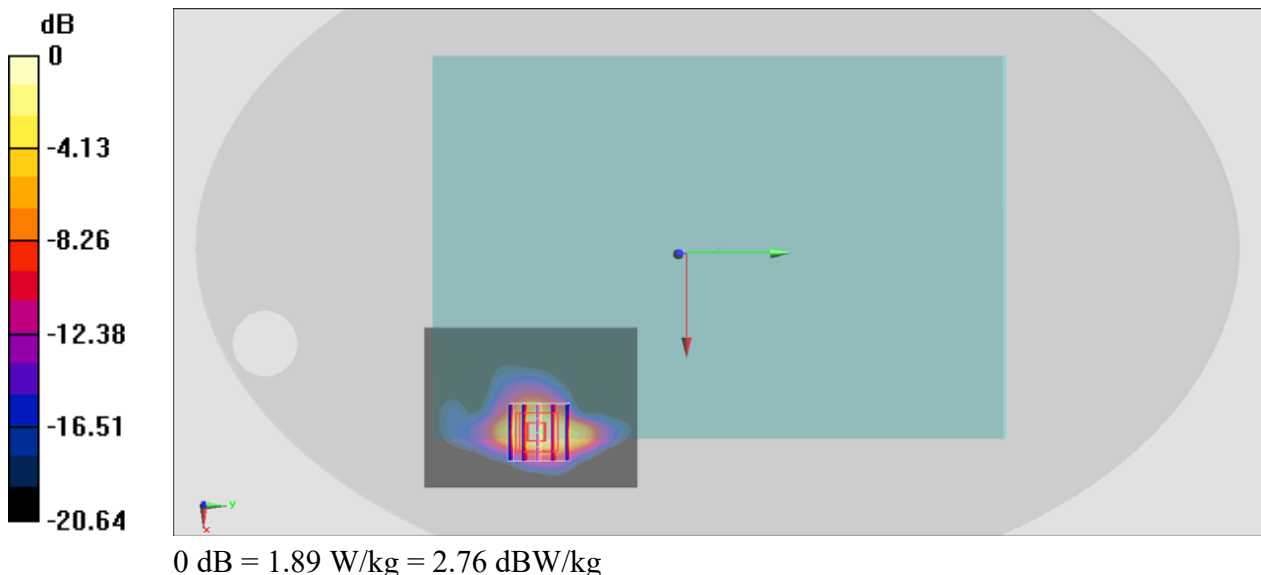
Communication System: FR1; Frequency: 1900 MHz; Duty Cycle: 1:1
Medium: HSL_1900_200927 Medium parameters used: $f = 1900$ MHz; $\sigma = 1.415$ S/m; $\epsilon_r = 39.184$;
 $\rho = 1000$ kg/m³
Ambient Temperature : 23.5 °C ; Liquid Temperature : 22.5 °C

DASY5 Configuration

- Probe: EX3DV4 - SN7306; ConvF(8.06, 8.06, 8.06) @ 1900 MHz; Calibrated: 2020/7/24
- Sensor-Surface: 1.4mm (Mechanical Surface Detection)
- Electronics: DAE4 Sn1399; Calibrated: 2020/2/18
- Phantom: ELI V4.0; Type: QDOVA001BB; Serial: 1041
- Measurement SW: DASY52, Version 52.10 (4); SEMCAD X Version 14.6.14 (7483)

Area Scan (61x81x1): Interpolated grid: dx=1.500 mm, dy=1.500 mm
Maximum value of SAR (interpolated) = 2.22 W/kg

Zoom Scan (5x5x7)/Cube 0: Measurement grid: dx=8mm, dy=8mm, dz=5mm
Reference Value = 33.46 V/m; Power Drift = -0.07 dB
Peak SAR (extrapolated) = 2.39 W/kg
SAR(1 g) = 1.15 W/kg; SAR(10 g) = 0.531 W/kg
Maximum value of SAR (measured) = 1.89 W/kg



#05_FR1 n5_20M_BPSK_50_0_Bottom Face_0mm_Ch167300

Communication System: FR1; Frequency: 836.5 MHz; Duty Cycle: 1:1

Medium: HSL_850_200930 Medium parameters used : $f = 836.5$ MHz; $\sigma = 0.92$ S/m; $\epsilon_r = 42.497$; $\rho = 1000$ kg/m³

Ambient Temperature : 23.6 °C; Liquid Temperature : 22.6 °C

DASY5 Configuration

- Probe: EX3DV4 - SN7306; ConvF(9.61, 9.61, 9.61) @ 836.5 MHz; Calibrated: 2020/7/24
- Sensor-Surface: 1.4mm (Mechanical Surface Detection)
- Electronics: DAE4 Sn1399; Calibrated: 2020/2/18
- Phantom: ELI V4.0; Type: QDOVA001BB; Serial: 1041
- Measurement SW: DASY52, Version 52.10 (4); SEMCAD X Version 14.6.14 (7483)

Area Scan (91x71x1): Interpolated grid: dx=1.500 mm, dy=1.500 mm

Maximum value of SAR (interpolated) = 2.22 W/kg

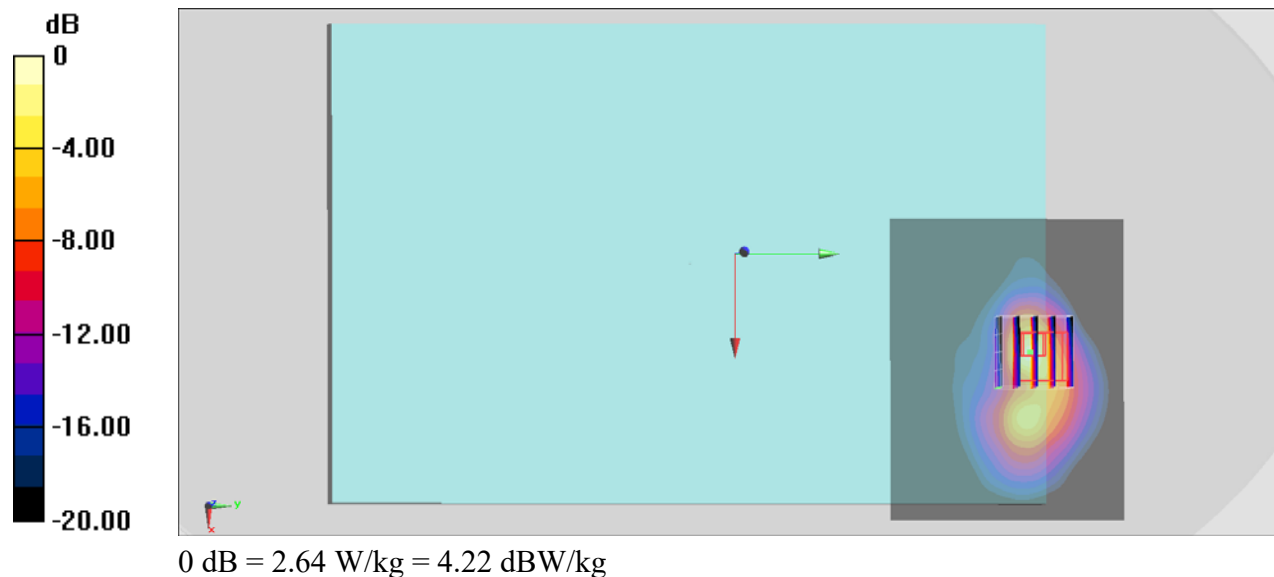
Zoom Scan (5x5x7)/Cube 0: Measurement grid: dx=8mm, dy=8mm, dz=5mm

Reference Value = 29.44 V/m; Power Drift = -0.12 dB

Peak SAR (extrapolated) = 4.54 W/kg

SAR(1 g) = 1.15 W/kg; SAR(10 g) = 0.463 W/kg

Maximum value of SAR (measured) = 2.64 W/kg



#06_FR1 n7_20M_BPSK_1_1_Bottom of Laptop_0mm_Ch507000

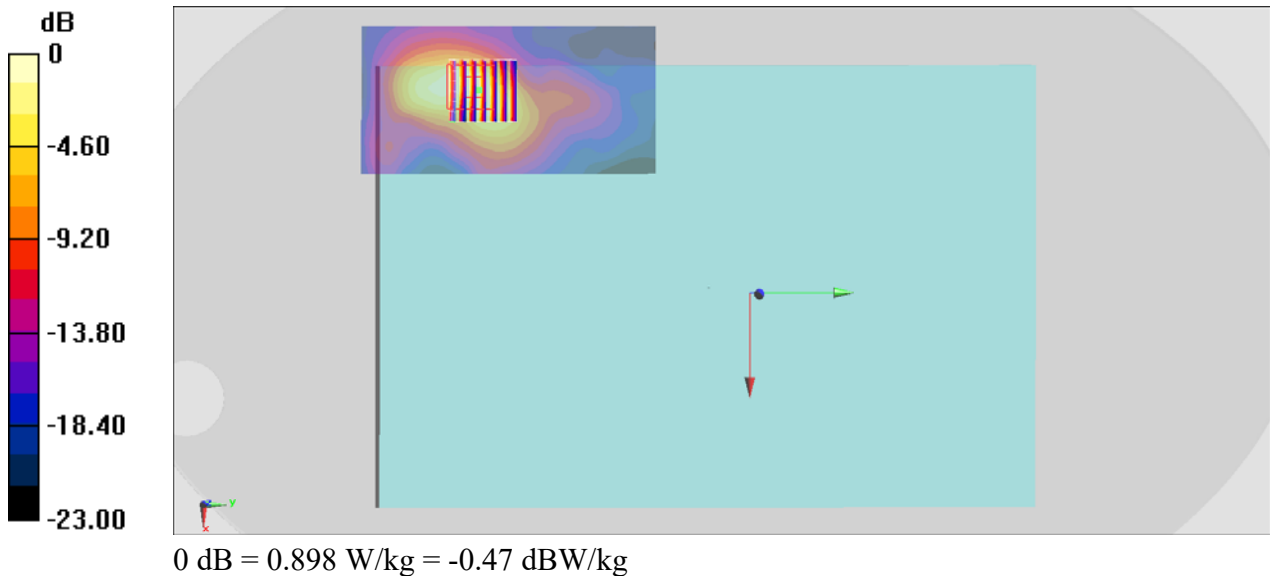
Communication System: FR1 ; Frequency: 2535 MHz;Duty Cycle: 1:1
 Medium: HSL_2600_200928 Medium parameters used : $f = 2535 \text{ MHz}$; $\sigma = 1.93 \text{ S/m}$; $\epsilon_r = 38.702$;
 $\rho = 1000 \text{ kg/m}^3$
 Ambient Temperature : $23.6 \text{ }^\circ\text{C}$; Liquid Temperature : $22.6 \text{ }^\circ\text{C}$

DASY5 Configuration

- Probe: EX3DV4 - SN7306;ConvF(7.34, 7.34, 7.34) @ 2535 MHz;Calibrated: 2020/7/24
- Sensor-Surface: 1.4mm (Mechanical Surface Detection)
- Electronics: DAE4 Sn1399; Calibrated: 2020/2/18
- Phantom: ELI V4.0; Type: QDOVA001BB; Serial: 1041
- Measurement SW: DASY52, Version 52.10 (4); SEMCAD X Version 14.6.14 (7483)

Area Scan (61x121x1): Interpolated grid: $dx=1.200 \text{ mm}$, $dy=1.200 \text{ mm}$
 Maximum value of SAR (interpolated) = 1.20 W/kg

Zoom Scan (7x7x7)/Cube 0: Measurement grid: $dx=5\text{mm}$, $dy=5\text{mm}$, $dz=5\text{mm}$
 Reference Value = 19.72 V/m ; Power Drift = 0.13 dB
 Peak SAR (extrapolated) = 1.90 W/kg
SAR(1 g) = 0.891 W/kg ; SAR(10 g) = 0.340 W/kg
 Maximum value of SAR (measured) = 0.898 W/kg



#07_FR1 n12_15M_BPSK_75_0_Bottom Face_0mm_Ch141500

Communication System: FR1; Frequency: 707.5 MHz; Duty Cycle: 1:1

Medium: HSL_750_200930 Medium parameters used : $f = 707.5$ MHz; $\sigma = 0.874$ S/m; $\epsilon_r = 43.103$;
 $\rho = 1000$ kg/m³

Ambient Temperature : 23.6 °C ; Liquid Temperature : 22.6 °C

DASY5 Configuration

- Probe: EX3DV4 - SN7306; ConvF(9.92, 9.92, 9.92) @ 707.5 MHz; Calibrated: 2020/7/24
- Sensor-Surface: 1.4mm (Mechanical Surface Detection)
- Electronics: DAE4 Sn1399; Calibrated: 2020/2/18
- Phantom: ELI V4.0; Type: QDOVA001BB; Serial: 1041
- Measurement SW: DASY52, Version 52.10 (4); SEMCAD X Version 14.6.14 (7483)

Area Scan (91x71x1): Interpolated grid: dx=1.500 mm, dy=1.500 mm

Maximum value of SAR (interpolated) = 2.34 W/kg

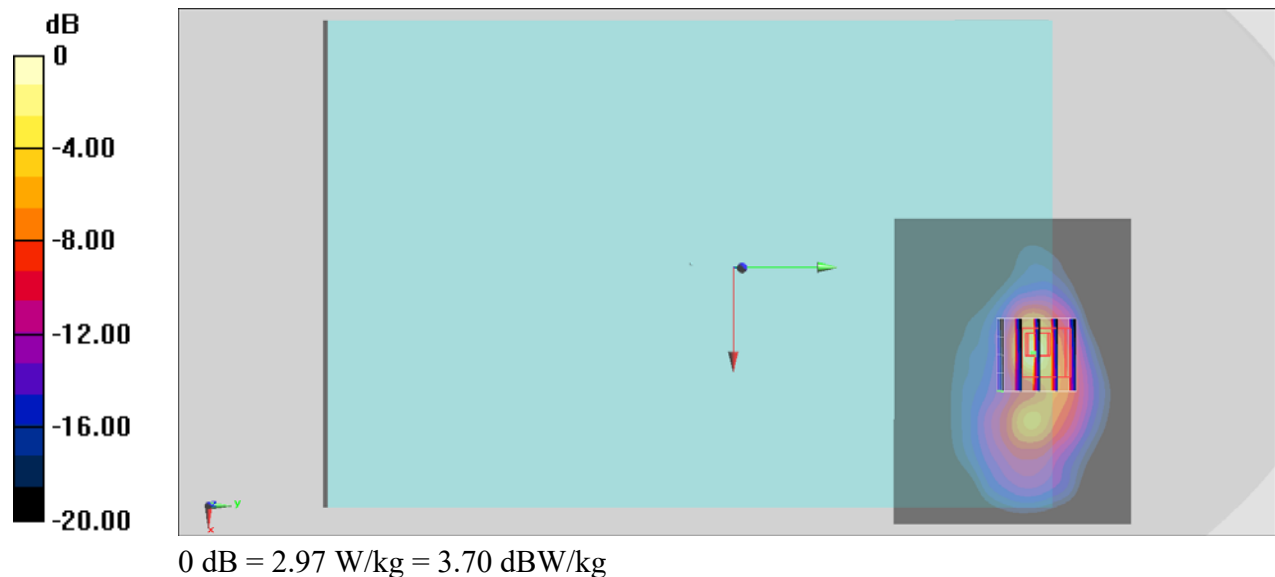
Zoom Scan (5x5x7)/Cube 0: Measurement grid: dx=8mm, dy=8mm, dz=5mm

Reference Value = 20.48 V/m; Power Drift = 0.00 dB

Peak SAR (extrapolated) = 5.78 W/kg

SAR(1 g) = 1.01 W/kg; SAR(10 g) = 0.360 W/kg

Maximum value of SAR (measured) = 2.97 W/kg



#08_FR1 n41_100M_BPSK_1_1_Bottom of Laptop_0mm_Ch528000

Communication System: FR1; Frequency: 2640 MHz; Duty Cycle: 1:1

Medium: HSL_2600_200928 Medium parameters used: $f = 2640$ MHz; $\sigma = 2.051$ S/m; $\epsilon_r = 38.278$; $\rho = 1000$ kg/m³

Ambient Temperature : 23.6 °C; Liquid Temperature : 22.6 °C

DASY5 Configuration

- Probe: EX3DV4 - SN7306; ConvF(7.34, 7.34, 7.34) @ 2640 MHz; Calibrated: 2020/7/24
- Sensor-Surface: 1.4mm (Mechanical Surface Detection)
- Electronics: DAE4 Sn1399; Calibrated: 2020/2/18
- Phantom: ELI V4.0; Type: QDOVA001BB; Serial: 1041
- Measurement SW: DASY52, Version 52.10 (4); SEMCAD X Version 14.6.14 (7483)

Area Scan (61x121x1): Interpolated grid: dx=1.200 mm, dy=1.200 mm

Maximum value of SAR (interpolated) = 1.75 W/kg

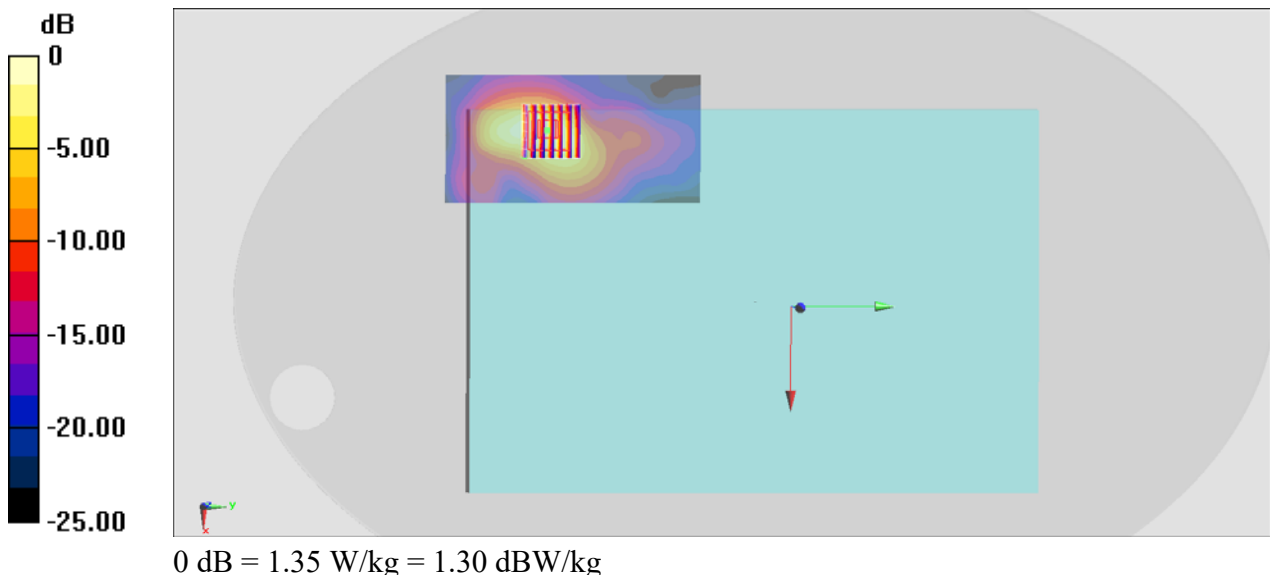
Zoom Scan (7x7x7)/Cube 0: Measurement grid: dx=5mm, dy=5mm, dz=5mm

Reference Value = 14.32 V/m; Power Drift = 0.12 dB

Peak SAR (extrapolated) = 2.72 W/kg

SAR(1 g) = 1.13 W/kg; SAR(10 g) = 0.479 W/kg

Maximum value of SAR (measured) = 1.35 W/kg



#09_FR1 n66_20M_BPSK_1_1_Bottom Face_0mm_Ch344000

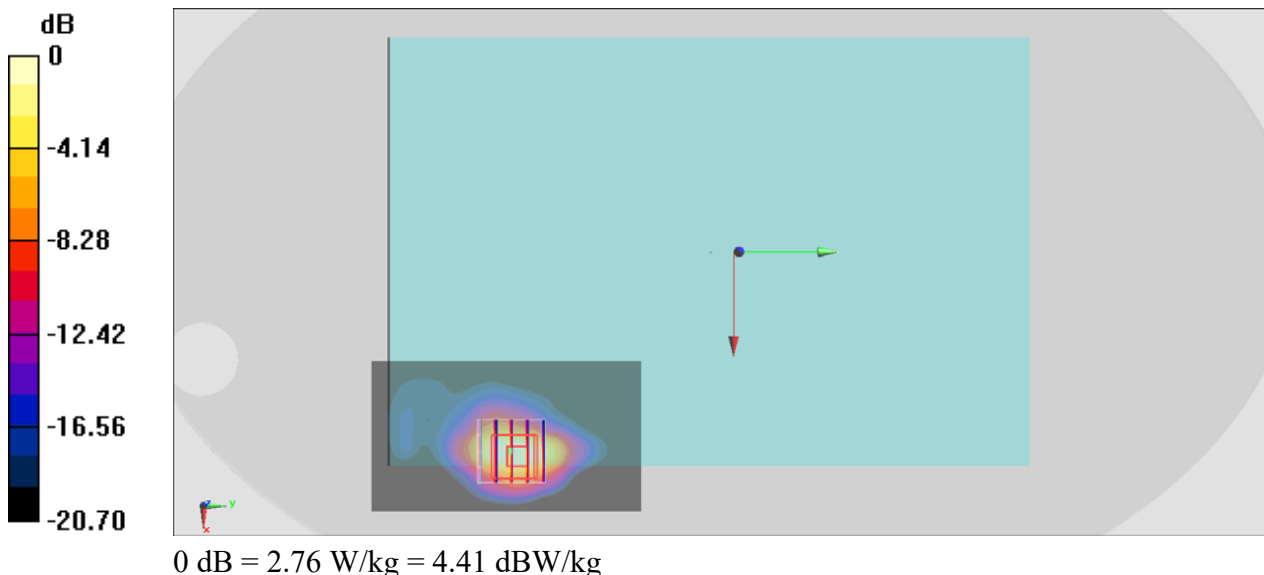
Communication System: FR1; Frequency: 1720 MHz; Duty Cycle: 1:1
Medium: HSL_1750_200929 Medium parameters used: $f = 1720$ MHz; $\sigma = 1.32$ S/m; $\epsilon_r = 40.473$; $\rho = 1000$ kg/m³
Ambient Temperature : 23.6 °C; Liquid Temperature : 22.6 °C

DASY5 Configuration

- Probe: EX3DV4 - SN7306; ConvF(8.35, 8.35, 8.35) @ 1720 MHz; Calibrated: 2020/7/24
- Sensor-Surface: 1.4mm (Mechanical Surface Detection)
- Electronics: DAE4 Sn1399; Calibrated: 2020/2/18
- Phantom: ELI V4.0; Type: QDOVA001BB; Serial: 1041
- Measurement SW: DASY52, Version 52.10 (4); SEMCAD X Version 14.6.14 (7483)

Area Scan (51x91x1): Interpolated grid: dx=1.500 mm, dy=1.500 mm
Maximum value of SAR (interpolated) = 2.07 W/kg

Zoom Scan (5x5x7)/Cube 0: Measurement grid: dx=8mm, dy=8mm, dz=5mm
Reference Value = 21.81 V/m; Power Drift = -0.09 dB
Peak SAR (extrapolated) = 2.48 W/kg
SAR(1 g) = 1.14 W/kg; SAR(10 g) = 0.516 W/kg
Maximum value of SAR (measured) = 2.76 W/kg



#10_FR1 n71_20M_BPSK_50_0_Bottom of Laptop_0mm_Ch136100

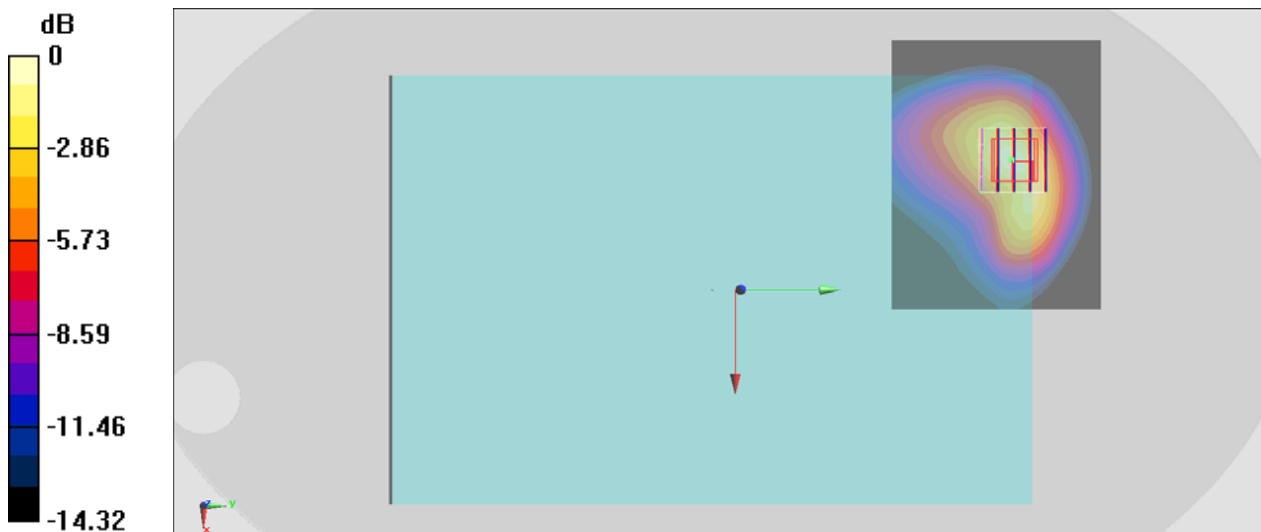
Communication System: FR1; Frequency: 680.5 MHz; Duty Cycle: 1:1
Medium: HSL_750_200930 Medium parameters used: $f = 680.5$ MHz; $\sigma = 0.864$ S/m; $\epsilon_r = 43.215$;
 $\rho = 1000$ kg/m³
Ambient Temperature : 23.6 °C ; Liquid Temperature : 22.6 °C

DASY5 Configuration

- Probe: EX3DV4 - SN7306; ConvF(9.92, 9.92, 9.92) @ 680.5 MHz; Calibrated: 2020/7/24
- Sensor-Surface: 1.4mm (Mechanical Surface Detection)
- Electronics: DAE4 Sn1399; Calibrated: 2020/2/18
- Phantom: ELI V4.0; Type: QDOVA001BB; Serial: 1041
- Measurement SW: DASY52, Version 52.10 (4); SEMCAD X Version 14.6.14 (7483)

Area Scan (91x71x1): Interpolated grid: dx=1.500 mm, dy=1.500 mm
Maximum value of SAR (interpolated) = 1.52 W/kg

Zoom Scan (5x5x7)/Cube 0: Measurement grid: dx=8mm, dy=8mm, dz=5mm
Reference Value = 35.73 V/m; Power Drift = 0.08 dB
Peak SAR (extrapolated) = 2.09 W/kg
SAR(1 g) = 1.09 W/kg; SAR(10 g) = 0.653 W/kg
Maximum value of SAR (measured) = 1.70 W/kg



0 dB = 1.70 W/kg = 2.30 dBW/kg