

User manual

1. Wired mode connection:

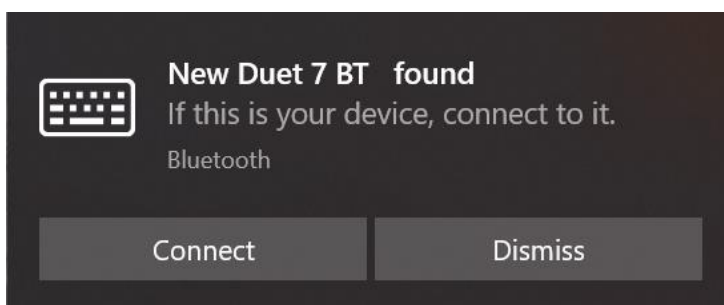
Align the pogo pin female seat at the bottom of the plate with the male seat at the front end of folio case, and connect them through mutual adsorption of magnets on both sides, and then use them.

2. Bluetooth connection:

Two methods are described as follows:

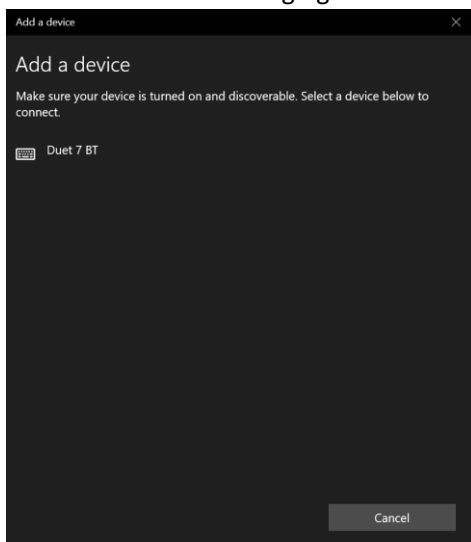
a. Quick connect:

Duet 7 host supports fast connection function. For the first connection, first turn on the host Bluetooth, turn the switch on the right side of folio case from the off position to the up position, and then the white LED under the switch starts to flash. At the same time, the following screen will appear on duet 7 host screen, and click the [connect] button to complete the connection before use.

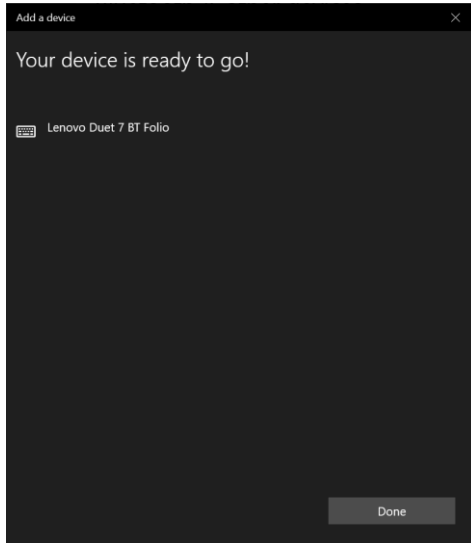


b. Normal connection:

For the first connection, turn the switch on the right side of folio case from the off position up one grid, and then the white LED under the switch starts to flash. Open the Bluetooth connection interface on duet 7 host, click and select the device "duet 7 BT" for connection, as shown in the following figure:



When the screen as shown in the figure below appears, it indicates that the connection is successful. Click the [done] button to start using.



3. Low power and charging instructions:

When the orange led under the folio case switch starts flashing, it indicates that the keyboard is in low power and needs to be charged. Connect the duet 7 host to the keyboard cable and start charging. When charging, the orange LED is always on and off after full charging.

4. Back connection Description:

If the duet 7 host is successfully connected to folio case, the Bluetooth connection will be automatically made after the keyboard is turned on next time. If the connection is not successful, please check whether the Bluetooth switch of duet 7 host is on, or turn up the switch on the right side of the keyboard for 2 seconds, release it, the white LED flashes, enter the pairing mode, and then re connect the Bluetooth according to one of the above two methods.

5. Product parameters:

Bluetooth version	BT5.0	Working hours	>20 天 ^①
Battery capacity	850mAh	Charging current	400mAh
Charging voltage	DC 5V	Working distance	10m
Working temperature	5℃~45℃	Working humidity	10%~85%

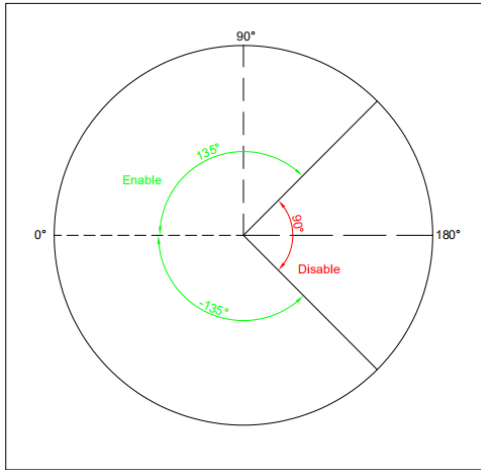
① It is calculated by two hours of normal use per day.

六、 Hot key function description:

Key								
Function	Fn Lock	Mute	Volume-	Volume+	MIC Mute	brightness -	brightness +	Screen Switch
Key								
Function	Flight Mode	Setting	Lock screen	Multitask switching	Calculator	Super Key	Windows Screenshot tool	

七、Working angle:

In order to avoid touching the keyboard function by mistake in some modes, the operating angle of folio case is set to ± 135 degrees;



FCC Regulatory conformance:

This device complies with Part 15 of the FCC Rules. Operation is subject to the following two conditions:

- (1) This device may not cause harmful interference.
- (2) This device must accept any interference received, including interference that may cause undesired operation.

NOTE: This equipment has been tested and found to comply with the limits for a **Class B** digital device, pursuant to part 15 of the FCC Rules. These limits are designed to provide reasonable protection against harmful interference in a residential installation.

This equipment generates uses and can radiate radio frequency energy and, if not installed and used in accordance with the instructions, may cause harmful interference to radio communications. However, there is no guarantee that interference will not occur in a particular installation. If this equipment does cause harmful interference to radio or television reception, which can be determined by turning the equipment off and on, the user is encouraged to try to correct the interference by one or more of the following measures:

- Reorient or relocate the receiving antenna.
- Increase the separation between the equipment and receiver.
- Connect the equipment into an outlet on a circuit different from that to which the receiver is connected.
- Consult the dealer or an experienced radio/TV technician for help

NOTE: The manufacturer is not responsible for any radio or TV interference caused by unauthorized modifications to this equipment. Such modifications could void the user's authority to operate the equipment.

IC Regulatory conformance

This device complies with CAN ICES-3 (B)/NMB-3(B).

This device complies with Industry Canada licence-exempt RSS standard(s). Operation is subject to the following two conditions:

- (1) this device may not cause harmful interference, and
- (2) this device must accept any interference received, including interference that may cause undesired operation.

Cet appareil est conforme à la norme CAN ICES-3 (B)/NMB-3 (B).

Le présent appareil est conforme aux CNR d'Industrie Canada applicables aux appareils radio exempts de licence. L'exploitation est autorisée aux deux conditions suivantes :

- (1) l'appareil ne doit pas produire de brouillage, et
- (2) l'utilisateur de l'appareil doit accepter tout brouillage radioélectrique subi, même si le brouillage est susceptible d'en compromettre le fonctionnement.

RF Exposure

This equipment complies with FCC/IC radiation exposure limits set forth for an uncontrolled environment.

Cet équipement est conforme aux limites d'exposition aux radiations de la IC définies pour un environnement non contrôlé.