



REPORT No.: SZ21070244S01

Annex D Plots of Maximum SAR Test Results

Laboratory Name: Morlab

WLAN U-NII-5_802.11ax-HE160 MCS0_Bottom Surface_0mm_Ch79_MAIN ANT

Device Under Test Properties

Model, Manufacturer	Dimensions [mm]	IMEI	DUT Type
Device,	176.0 x 120.0 x 15.0		Tablet

Exposure Conditions

Phantom Section, TSL	Position, Test Distance [mm]	Band	Group, UID	Frequency [MHz], Channel Number	Conversion Factor	TSL Conductivity [S/m]	TSL Permittivity
Flat, -	BACK, 0.00	U-NII-5 Standalone	WLAN, 10456-AAC	6345.0, 79	4.78	5.39	35.0

Hardware Setup

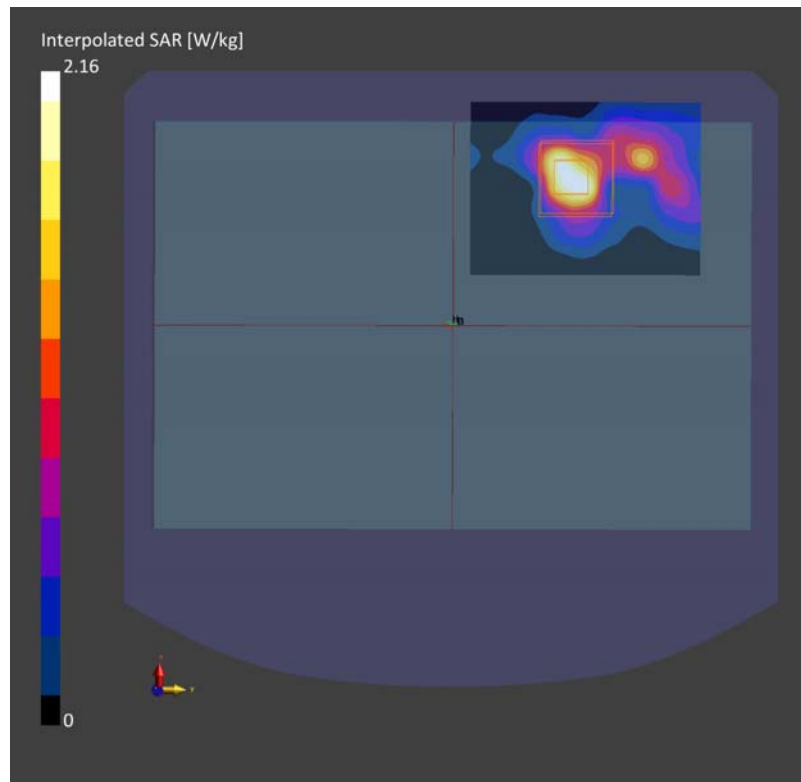
Phantom	TSL, Measured Date	Probe, Calibration Date	DAE, Calibration Date
Twin-SAM V8.0 (30deg probe tilt) - xxxx	HBBL-600-10000 Charge:xxxx, 2021-Aug-09	EX3DV4 - SN7608, 2020-11-27	DAE4 Sn1643, 2020-11-30

Scans Setup

	Area Scan	Zoom Scan
Grid Extents [mm]	51.0 x 68.0	22.0 x 22.0 x 22.0
Grid Steps [mm]	5.0 x 5.0	4.0 x 4.0 x 1.4
Sensor Surface [mm]	3.0	1.4

Measurement Results

	Area Scan	Zoom Scan
Date	2021-08-10, 16:57	2021-08-10, 17:06
psSAR1g [W/Kg]	0.378	0.437
psSAR10g [W/Kg]	0.117	0.110
Power Drift [dB]	0.17	-0.02



Laboratory Name: Morlab

WLAN U-NII-5_802.11ax-HE160 MCS0_Bottom Surface_0mm_Ch15_AUX ANT

Device Under Test Properties

Model, Manufacturer	Dimensions [mm]	IMEI	DUT Type
Device,	350.0 x 260.0 x 18.0		Laptop

Exposure Conditions

Phantom Section, TSL	Position, Test Distance [mm]	Band	Group, UID	Frequency [MHz], Channel Number	Conversion Factor	TSL Conductivity [S/m]	TSL Permittivity
Flat, -	BACK, 0.00	U-NII-5 Standalone	WLAN, 10456-AAC	6025.0, 15	5.78	5.39	35.0

Hardware Setup

Phantom	TSL, Measured Date	Probe, Calibration Date	DAE, Calibration Date
Twin-SAM V8.0 (30deg probe tilt) - xxxx	HBBL-600-10000 Charge:xxxx, 2021-Aug-10	EX3DV4 - SN7608, 2020-11-27	DAE4 Sn1643, 2020-11-30

Scans Setup

	Area Scan	Zoom Scan
Grid Extents [mm]	51.0 x 68.0	22.0 x 22.0 x 22.0
Grid Steps [mm]	5.0 x 5.0	3.4 x 3.4 x 1.4
Sensor Surface [mm]	3.0	1.4

Measurement Results

	Area Scan	Zoom Scan
Date	2021-08-10, 19:03	2021-08-10, 19:13
psSAR1g [W/Kg]	0.615	0.663
psSAR10g [W/Kg]	0.201	0.198
Power Drift [dB]	0.24	-0.03

