

**lenovo**

# Lenovo TAB A7-50

## Quick Start Guide v1.0

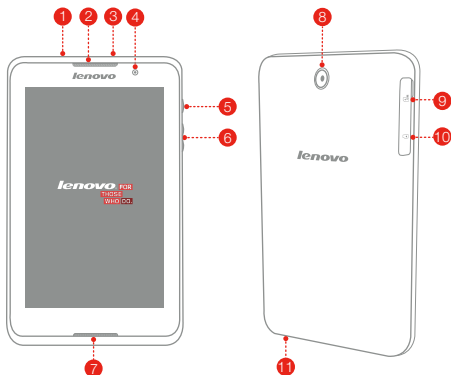
- Read this guide carefully before using your tablet.  
All information labeled with \* in this guide refers only to the WLAN + 3G model (Lenovo A3500-H/HV).

# Technical specifications

<b>Lenovo TAB A7-50</b>	
<b>Model &amp; version</b>	Model: Lenovo A3500-F    Model: <sup>③</sup> Lenovo A3500-FL Version: WLAN                      Version: WLAN
	*Model: Lenovo A3500-H    *Model: Lenovo A3500-HV *Version: WLAN + 3G        *Version: WLAN + 3G (Data only)                              (Voice)
<b>①Size and weight</b>	Height: 198 mm    Width: 121.2 mm    Depth: 9.9 mm Weight: 320 g
<b>CPU</b>	MTK MT8121 Quad Core 1.3 GHz *MTK MT8382 Quad Core 1.3 GHz
<b>Camera</b>	5.0 MP FF (rear) + 2.0 MP FF (front)
<b>Battery</b>	3450 mAh
<b>Display</b>	Size: 7 inches (diagonal)    Screen: Multi-touch display Resolution: 1280 × 800        LCD type: IPS
<b>Wireless communication</b>	<sup>②</sup> Bluetooth 4.0    WLAN 802.11 b/g/n    GPS *WCDMA, GSM

- ① Actual product may differ.
- ② Launch with Android 4.2 which only supports BT 4.0 PXP profile.
- ③ A3500-FL does not have a rear camera.

# First glance

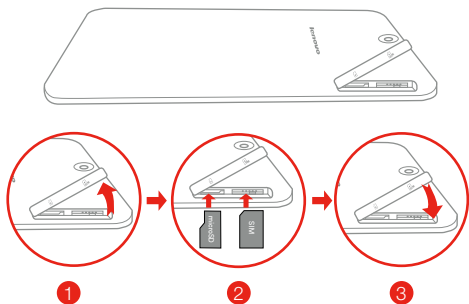


- |                      |                 |                  |
|----------------------|-----------------|------------------|
| 1 Earphone jack      | 2 Receiver      | 3 Micro USB      |
| 4 Front camera       | 5 On/Off button | 6 Volume Key     |
| 7 Speaker            | 8 *Rear camera  | 9 *SIM card Slot |
| 10 microSD card slot | 11 Microphone   |                  |

 The WLAN model (Lenovo A3500-F/FL) does not have a SIM card slot. A3500-FL does not have a rear camera.

## \*Installing the SIM card & microSD card

You can use cellular services with the WLAN + 3G model (Lenovo A3500-H/HV) by inserting the SIM card provided by your carrier services. Install the SIM card & microSD card as shown.



**Step 1.** Open the SIM card & microSD card slot cover.

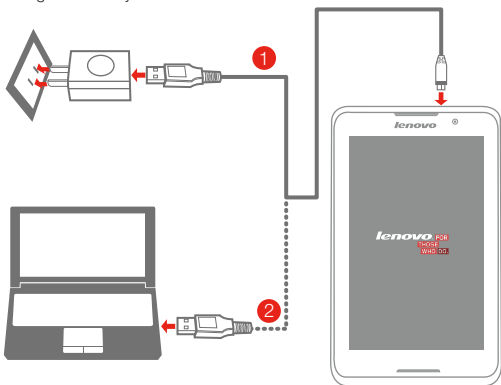
**Step 2.** Insert the SIM card into the SIM card slot and insert the microSD card into the microSD card slot.

**Step 3.** Replace the SIM card & microSD card slot cover .

 Do not insert or remove the SIM card while your tablet is turned on. Doing so may permanently damage your SIM card or tablet.


# Charging the battery


Before using your tablet, you might need to charge the battery. Charge the battery as shown.



**Method 1.** Connect your tablet to a power outlet using the included cable and USB power adapter.

**Method 2.** Charge the battery using a computer.

 Low battery

 Fully charged

 Charging

 For more information about battery safety, see the *Important Product Information Guide*.

## Learn more

For other useful manuals, please access “User Guide” from the Browser favorites in your tablet.

For “Regulatory Notices”, please go to <http://support.lenovo.com/>.

### Getting support

For support on network service and billing, please contact your wireless network operator. For instructions on how to use your tablet, go to

<http://support.lenovo.com/>.

### European Union conformity



### Radio and Telecommunications Terminal Equipment Directive

This product is in compliance with the essential requirements and other relevant provisions of the Radio and Telecommunications Terminal Equipment Directive, 1999/5/EC.

### Legal notices

Lenovo and the Lenovo logo are trademarks of Lenovo in the United States, other countries, or both.

Other company, product, or service names may be trademarks or service marks of others.

First Edition (March 2014) © Copyright Lenovo 2014.

**Reduce | Reuse | Recycle**



70110781

Printed in China