



IdeaTab A1000L-F

Quick Start Guide v1.0



Welcome



Please read this guide carefully before using your IdeaTab. The guide will help you learn tips on setting and using IdeaTab.

The information in this guide is based on default settings. Illustrations and screenshots used here may differ from the actual product appearance and screen displays.

Getting started



Screen lock/unlock
In standby mode, press the Power button to lock your IdeaTab. To unlock the screen, press the Power button, and then drag the on-screen slider to enter the interface displayed before it locks.

Sleep/Wake
If you do not touch the screen for a while, IdeaTab dims its screen to enter sleep mode for power saving.

Turning IdeaTab off
While in standby mode, press and hold the Power button and then follow the on-screen instructions to confirm shutdown.

Technical specifications

Model: IdeaTab A1000L-F Version: Wi-Fi

Hardware

Dimensions/Weight/Color
L x W x H: 199x121x10.7mm
*Weight: 350g Color: Black

CPU
MTK 8317, dual-core, 1.0GHz

Integrated camera
0.3 MP (front) **Screen**
7", 16:9 TN, 1,024 x 600 dpi

Battery
3500mAh

Operating system

Operating system
Android 4.1 (Jelly Bean)

Interface

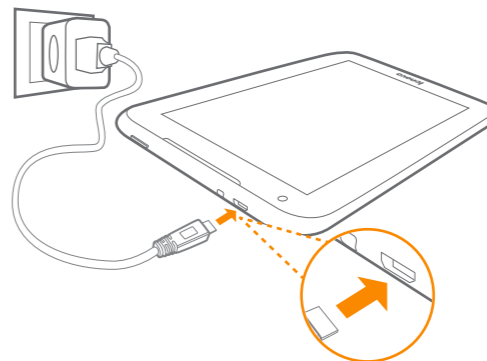
3.5 mm earphone jack **micro SD card slot** **Micro USB**
American National Standards 32 GB (max.)

Communication

Wi-Fi

*Based on actual measurements.

Charging IdeaTab



When the battery level falls below the threshold, IdeaTab will alert you with a tone and the battery status icon will change into . We recommend you plug the AC power adapter into your IdeaTab in the direction of the orange arrow as shown above figure.

You can charge your IdeaTab whether it is on or off. If your IdeaTab is being charged while it is on, the battery status icon (located on the status bar of the screen) will appear as . After the battery has finished charging, the status bar will show the fully charged icon .

For more information on battery safety, see the *Important Product Information Guide*.

Learn more

For more information about IdeaTab functions and useful manuals, go to <http://support.lenovo.com/>. To read this manual on your IdeaTab, please access "User Guide" from the Browser favorites in your IdeaTab.

Getting support
For support on network service and billing, please contact your wireless network operator. For instructions on how to use your IdeaTab, go to <http://support.lenovo.com/>.

European Union conformity



Radio and Telecommunications Terminal Equipment Directive
This product is in compliance with the essential requirements and other relevant provisions of the Radio and Telecommunications Terminal Equipment Directive, 1999/5/EC.

Legal notices
Lenovo, the Lenovo logo, and IdeaTab are trademarks of Lenovo in the United States, other countries, or both. Other company, product, or service names may be trademarks or service marks of others.

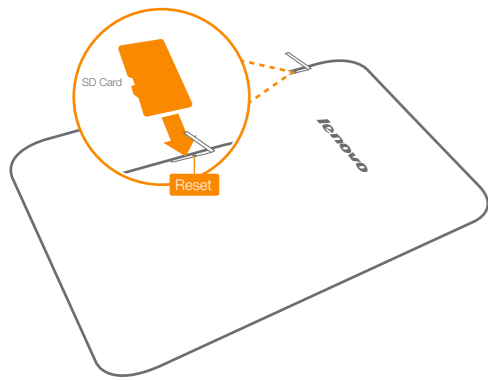
First Edition (July 2013)
© Copyright Lenovo 2013.
LIMITED AND RESTRICTED RIGHTS NOTICE: If data or software is delivered pursuant a General Services Administration "GSA" contract, use, reproduction, or disclosure is subject to restrictions set forth in Contract No. GS-35F-05925.

Reduce | Reuse | Recycle



HQ60110715000
Printed in China

Inserting micro SD card

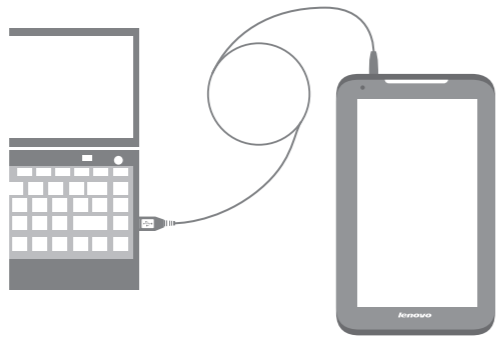


IdeaTab supports micro SD card extension. To insert a micro SD card, do the following:

1. Open the micro SD card cover.
2. Insert the micro SD card as shown by the arrow.
3. Close the micro SD card cover.

Keep the metal surface down for micro SD card.

Connecting IdeaTab to PC



You can connect IdeaTab to the PC's USB port with the cable provided for battery charging or data transferring with the PC.

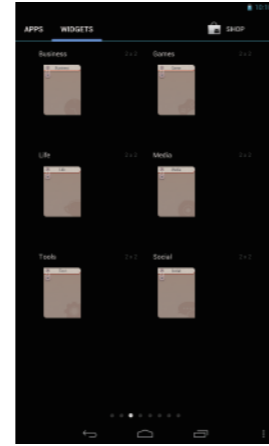
There are three connection methods available: USB storage, Media device (MTP) and Camera (PTP).

Installing apps and games

Transfer the APK setup file from the PC to IdeaTab, and then open it in the file manager on IdeaTab. The installer will run automatically.

Customizing the desktop

► Touch > **WIDGETS**. You can drag your favorite applications and widgets onto the desktop.



Adding apps/widgets to the desktop

Tap and hold the icon of your desired application or widget, until the desktop background pattern appears on the screen, and then place the icon wherever you wish.

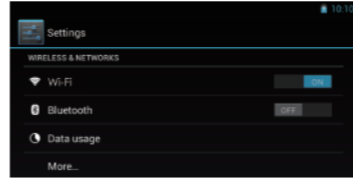
Editing the desktop

Tap and hold any icon on the desktop and then drag it to your preferred location or delete it from the desktop.

Communication

Wi-Fi connection

You can connect your IdeaTab to the Internet using Wi-Fi. When Wi-Fi is on, your IdeaTab will automatically scan for Wi-Fi hotspots within range. Select the Wi-Fi hotspot you want to connect to.



Browsing the web

► Touch > **Browser**. Now you can browse the Web and download applications.



- Add a bookmark
- Search or type a URL
- Bookmarks, history and saved pages

The above functions require your IdeaTab to connect to the Internet via Wireless network.

Camera

► Touch > **Camera**. Now you can record the wonderful moments of your life with the camera.
Touch > **Gallery**. Now you can view photos/videos from your IdeaTab.



Camera

There are two modes available for the camera: photo and video.

Album

You can zoom in/out a photo by double-tapping or moving your two fingers apart/together while touching the screen.