

FCC SAR EVALUATION REPORT

**In accordance with the requirements of
FCC 47 CFR Part 2(2.1093), ANSI/IEEE C95.1-1992 and
IEEE Std 1528-2013**

Product Name : 4G MIFI
Brand Name : LOGIC, iSWAG, UNONU
Model Name : ML8
Family Model : ATOM 2, M8N
Report No. : STR220926002004E
FCC ID : O55ML3722

Prepared for

SWAGTEK

10205 NW 19th Street STE101Miami, FL 33172

Prepared by

Shenzhen NTEK Testing Technology Co., Ltd.

1/F, Building E, Fenda Science Park, Sanwei Community, Xixiang Street,

Bao'an District, Shenzhen 518126 P.R.China.

Tel. 400-800-6106, 0755-2320 0050, 0755-2320 0090

Website: <http://www.ntek.org.cn>

TEST RESULT CERTIFICATION

Applicant's name.....: SWAGTEK
Address.....: 10205 NW 19th Street STE101Miami, FL 33172
Manufacturer's Name.....: SWAGTEK
Address.....: 10205 NW 19th Street STE101Miami, FL 33172

Product description

Product name.....: 4G MIFI
Brand Name.....: LOGIC, iSWAG, UNONU
Model and/or type reference : ML8
Family Model.....: ATOM 2, M8N

FCC 47 CFR Part 2(2.1093)
ANSI/IEEE C95.1-1992

Standards.....: IEEE Std 1528-2013
Published RF exposure KDB procedures

This device described above has been tested by Shenzhen NTEK. In accordance with the measurement methods and procedures specified in IEEE Std 1528-2013 and KDB 865664 D01. Testing has shown that this device is capable of compliance with localized specific absorption rate (SAR) specified in FCC 47 CFR Part 2(2.1093) and ANSI/IEEE C95.1-1992. The test results in this report apply only to the tested sample of the stated device/equipment. Other similar device/equipment will not necessarily produce the same results due to production tolerance and measurement uncertainties.

This report shall not be reproduced except in full, without the written approval of Shenzhen NTEK, this document may be altered or revised by Shenzhen NTEK, personal only, and shall be noted in the revision of the document.

Test Sample Number T220926002R002

Date of Test

Date (s) of performance of tests.....: Oct. 08, 2022 ~ Oct. 20, 2022

Date of Issue.....: Oct. 20, 2022

Test Result.....: Pass

Prepared By (Test Engineer) : Jacob.chen (Jacob Chen)

Approved By (Lab Manager) : Alex (Alex Li)

※ ※ **Revision History** ※ ※

REV.	DESCRIPTION	ISSUED DATE	REMARK
Rev.1.0	Initial Test Report Release	Oct. 20, 2022	Jacob Chen

TABLE OF CONTENTS

1.	General Information	6
1.1.	RF exposure limits.....	6
1.2.	Statement of Compliance	7
1.3.	EUT Description	7
1.4.	Test specification(s)	9
1.5.	Ambient Condition.....	9
2.	SAR Measurement System	10
2.1.	SATIMO SAR Measurement Set-up Diagram	10
2.2.	Robot	11
2.3.	E-Field Probe.....	12
2.3.1.	E-Field Probe Calibration	12
2.4.	SAM phantoms	13
2.4.1.	Technical Data	14
2.5.	Device Holder	15
2.6.	Test Equipment List	16
3.	SAR Measurement Procedures	18
3.1.	Power Reference	18
3.2.	Area scan & Zoom scan.....	18
3.3.	Description of interpolation/extrapolation scheme	20
3.4.	Volumetric Scan	20
3.5.	Power Drift	20
4.	System Verification Procedure	21
4.1.	Tissue Verification	21
4.1.1.	Tissue Dielectric Parameter Check Results	22
4.2.	System Verification Procedure	23
4.2.1.	System Verification Results.....	24
5.	SAR Measurement variability and uncertainty	25
5.1.	SAR measurement variability.....	25
5.2.	SAR measurement uncertainty	25
6.	RF Exposure Positions.....	26
6.1.	Wireless Router Devices	26
7.	RF Output Power	27
7.1.	WCDMA Conducted Power	27
7.2.	LTE Conducted Power	27
7.3.	WLAN & Bluetooth Output Power	37
8.	Antenna Location.....	39
9.	SAR Results	40
9.1.	SAR measurement Result.....	40
9.1.1.	SAR measurement Result of WCDMA Band 2	40

9.1.2.	SAR measurement Result of WCDMA Band 5	40
9.1.3.	SAR measurement Result of LTE Band 2	41
9.1.4.	SAR measurement Result of LTE Band 4	42
9.1.5.	SAR measurement Result of LTE Band 5	42
9.1.6.	SAR measurement Result of LTE Band 7	43
9.1.7.	SAR measurement Result of LTE Band 17	44
9.1.8.	SAR measurement Result of WLAN 2.4G	45
9.2.	Simultaneous Transmission Analysis.....	45
10.	Appendix A. Photo documentation	46
11.	Appendix B. System Check Plots.....	47
12.	Appendix C. Plots of High SAR Measurement.....	60
13.	Appendix D. Calibration Certificate	77

1. General Information

1.1. RF exposure limits

(A).Limits for Occupational/Controlled Exposure (W/kg)

Whole-Body	Partial-Body	Hands, Wrists, Feet and Ankles
0.4	8.0	20.0

(B).Limits for General Population/Uncontrolled Exposure (W/kg)

Whole-Body	Partial-Body	Hands, Wrists, Feet and Ankles
0.08	1.6	4.0

NOTE: **Whole-Body SAR** is averaged over the entire body, **partial-body SAR** is averaged over any 1 gram of tissue defined as a tissue volume in the shape of a cube. **SAR for hands, wrists, feet and ankles** is averaged over any 10 grams of tissue defined as a tissue volume in the shape of a cube.

Occupational/Controlled Environments:

Are defined as locations where there is exposure that may be incurred by people who are aware of the potential for exposure, (i.e. as a result of employment or occupation).

General Population/Uncontrolled Environments:

Are defined as locations where there is the exposure of individuals who have no knowledge or control of their exposure.

NOTE
 TRUNK LIMIT
 1.6 W/kg
 APPLIED TO THIS EUT

1.2. Statement of Compliance

The maximum results of Specific Absorption Rate (SAR) found during testing for ML8 are as follows.

RF Exposure Conditions		Equipment Class -Highest Reported SAR (W/kg)			
		PCE	DTS	NII	DSS
1-g Hotspot (Separation distance of 10mm)		1.369	0.213	N/A	N/A
Max Simultaneous Tx	1-g Hotspot	1.582	1.582	N/A	N/A

Note: The Max Simultaneous Tx is calculated based on the same configuration and test position.

This device is in compliance with Specific Absorption Rate (SAR) for general population/uncontrolled exposure limits (1.6 W/kg) specified in FCC 47 CFR Part 2(2.1093) and ANSI/IEEE C95.1-1992, and had been tested in accordance with the measurement methods and procedures specified in IEEE Std 1528-2013 & KDB 865664 D01.

1.3. EUT Description

Device Information			
Product Name	4G MIFI		
Brand Name	LOGIC, iSWAG, UNONU		
Model Name	ML8		
Family Model	ATOM 2, M8N		
Model Difference	All the model are the same circuit and RF module,except the model names.		
FCC ID	O55ML3722		
Device Phase	Identical Prototype		
Exposure Category	General population / Uncontrolled environment		
Antenna Type	PIFA Antenna		
Battery Information	DC 3.8V, 2500mAh, 9.5Wh		
HW Version	V03		
SW Version	LOGIC_ML8_GENERIC_V1.0_08092022		
Device Operating Configurations			
Supporting Mode(s)	WCDMA Band 2/5, LTE Band 2/4/5/7/17, WLAN 2.4G		
Test Modulation	WCDMA(QPSK), LTE(QPSK/16QAM), WLAN(DSSS/OFDM)		
Device Class	B		
Operating Frequency Range(s)	Band	Tx (MHz)	Rx (MHz)
	WCDMA Band 2	1850-1910	1930-1990
	WCDMA Band 5	824-849	869-894
	LTE Band 2	1850-1910	1930-1990
	LTE Band 4	1710-1755	2110-2155

	LTE Band 5	824-849	869-894
	LTE Band 7	2500-2570	2620-2690
	LTE Band 17	704-716	734-746
	WLAN 2.4G	2412-2462	
Power Class	3, tested with power control "all 1"(WCDMA Band 2)		
	3, tested with power control "all 1"(WCDMA Band 5)		
	3, tested with power control all Max.(LTE Band 2)		
	3, tested with power control all Max.(LTE Band 4)		
	3, tested with power control all Max.(LTE Band 5)		
	3, tested with power control all Max.(LTE Band 7)		
	3, tested with power control all Max.(LTE Band 17)		

1.4. Test specification(s)

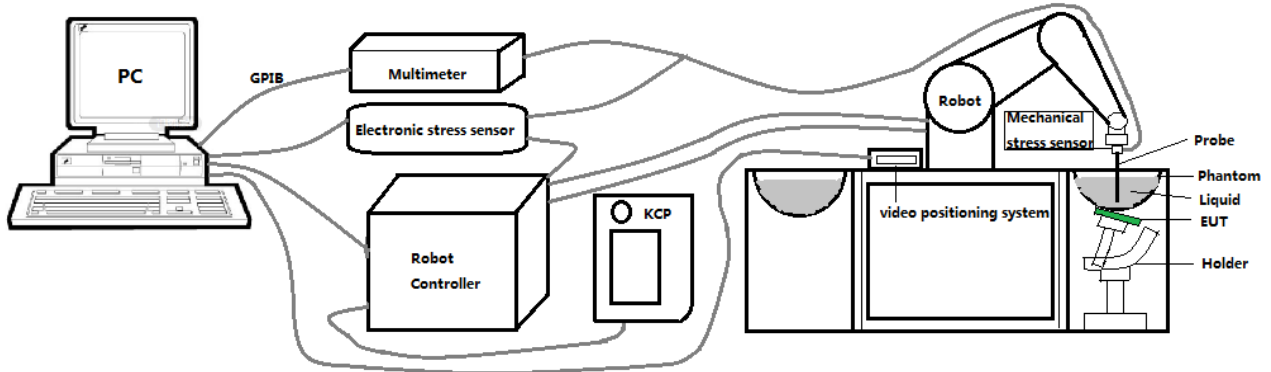
FCC 47 CFR Part 2(2.1093)
ANSI/IEEE C95.1-1992
IEEE Std 1528-2013
KDB 865664 D01 SAR measurement 100 MHz to 6 GHz
KDB 865664 D02 RF Exposure Reporting
KDB 447498 D01 General RF Exposure Guidance
KDB 248227 D01 802.11 Wi-Fi SAR
KDB 941225 D01 3G SAR Procedures
KDB 941225 D05 SAR for LTE Devices
KDB 941225 D06 Hotspot SAR

1.5. Ambient Condition

Ambient temperature	20°C – 24°C
Relative Humidity	30% – 70%

2. SAR Measurement System

2.1. SATIMO SAR Measurement Set-up Diagram



These measurements were performed with the automated near-field scanning system OPENSAR from SATIMO. The system is based on a high precision robot (working range: 901 mm), which positions the probes with a positional repeatability of better than ± 0.03 mm. The SAR measurements were conducted with dosimetric probe (manufactured by SATIMO), designed in the classical triangular configuration and optimized for dosimetric evaluation.

The first step of the field measurement is the evaluation of the voltages induced on the probe by the device under test. Probe diode detectors are nonlinear. Below the diode compression point, the output voltage is proportional to the square of the applied E-field; above the diode compression point, it is linear to the applied E-field. The compression point depends on the diode, and a calibration procedure is necessary for each sensor of the probe.

The Keithley multimeter reads the voltage of each sensor and send these three values to the PC. The corresponding E field value is calculated using the probe calibration factors, which are stored in the working directory. This evaluation includes linearization of the diode characteristics. The field calculation is done separately for each sensor. Each component of the E field is displayed on the "Dipole Area Scan Interface" and the total E field is displayed on the "3D Interface"

2.2. Robot

The SATIMO SAR system uses the high precision robots from KUKA. For the 6-axis controller system, the robot controller version (KUKA) from KUKA is used. The KUKA robot series have many features that are important for our application:



- High precision (repeatability ± 0.03 mm)
- High reliability (industrial design)
- Jerk-free straight movements
- Low ELF interference (the closed metallic construction shields against motor control fields)

2.3. E-Field Probe

This E-field detection probe is composed of three orthogonal dipoles linked to special Schottky diodes with low detection thresholds. The probe allows the measurement of electric fields in liquids such as the one defined in the IEEE and CENELEC standards.

For the measurements the Specific Dosimetric E-Field Probe SN 08/16 EPGO287 with following specifications is used



- Dynamic range: 0.01-100 W/kg
- Tip Diameter : 2.5 mm
- Distance between probe tip and sensor center: 1 mm
- Distance between sensor center and the inner phantom surface: 2 mm (repeatability better than ± 1 mm).
- Probe linearity: ± 0.08 dB
- Axial isotropy: ± 0.01 dB
- Hemispherical Isotropy: ± 0.01 dB
- Calibration range: 650MHz to 5900MHz for head & body simulating liquid.
- Lower detection limit: 8mW/kg

Angle between probe axis (evaluation axis) and surface normal line: less than 30° .

2.3.1. E-Field Probe Calibration

Each probe needs to be calibrated according to a dosimetric assessment procedure with accuracy better than $\pm 10\%$. The spherical isotropy shall be evaluated and within ± 0.25 dB. The sensitivity parameters (Norm X, Norm Y, and Norm Z), the diode compression parameter (DCP) and the conversion factor (Conv F) of the probe are tested. The calibration data can be referred to appendix D of this report.

2.4. SAM phantoms

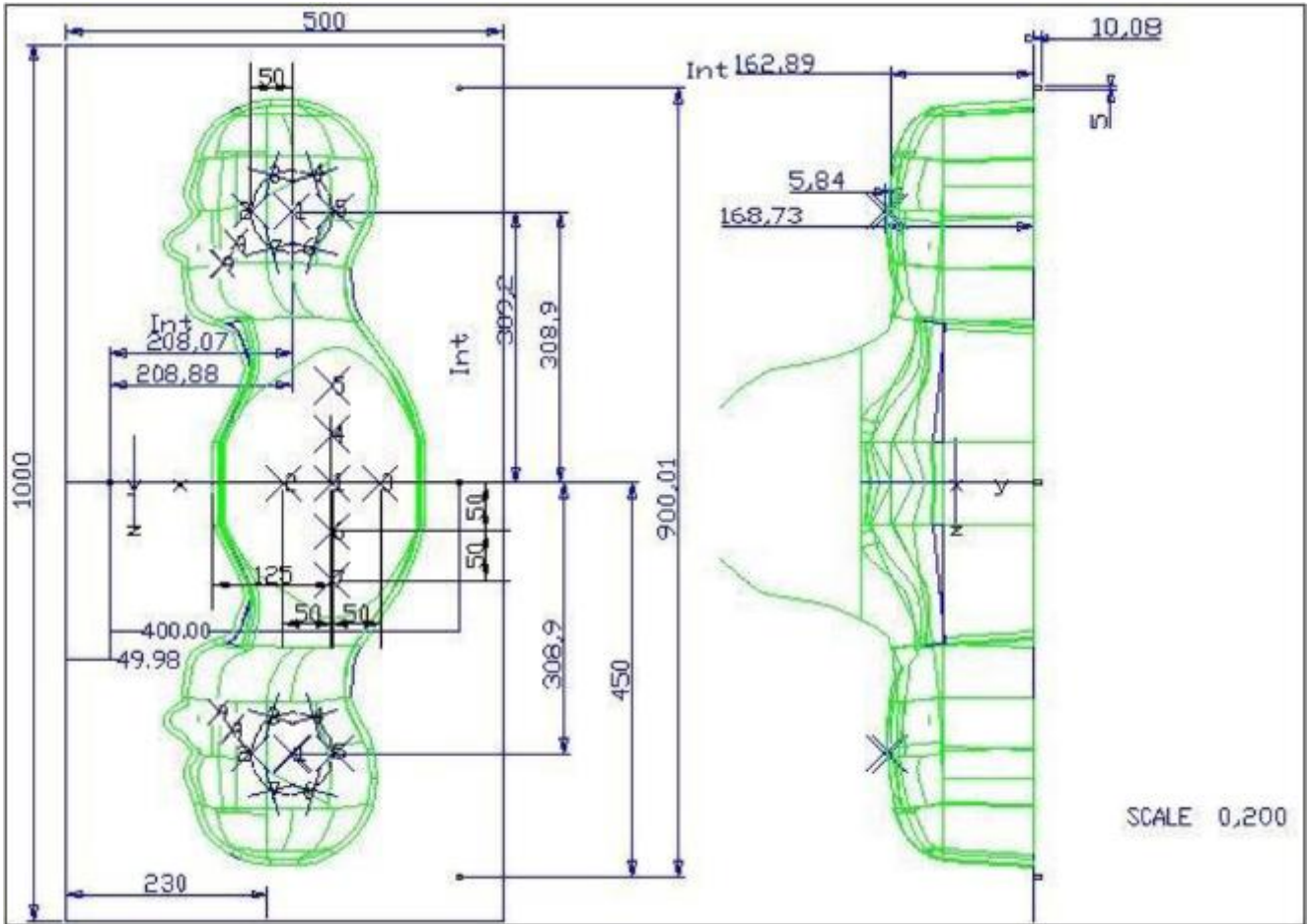
Photo of SAM phantom SN 16/15 SAM119



The SAM phantom is used to measure the SAR relative to people exposed to electro-magnetic field radiated by mobile phones.

2.4.1. Technical Data

Serial Number	Shell thickness	Filling volume	Dimensions	Positionner Material	Permittivity	Loss Tangent
SN 16/15 SAM119	2 mm ±0.2 mm	27 liters	Length:1000 mm Width:500 mm Height:200 mm	Gelcoat with fiberglass	3.4	0.02

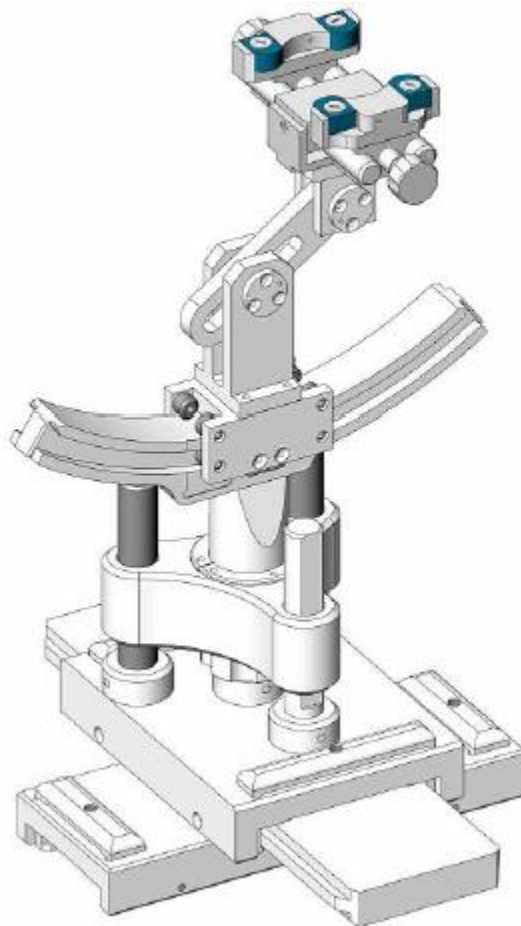


Serial Number	Left Head(mm)		Right Head(mm)		Flat Part(mm)	
	1	2	1	2	1	2
SN 16/15 SAM119	2	2.02	2	2.08	1	2.09
	3	2.05	3	2.06	2	2.06
	4	2.07	4	2.07	3	2.08
	5	2.08	5	2.08	4	2.10
	6	2.05	6	2.07	5	2.10
	7	2.05	7	2.05	6	2.07
	8	2.07	8	2.06	7	2.07
	9	2.08	9	2.06	-	-

The test, based on ultrasonic system, allows measuring the thickness with an accuracy of 10 µm.

2.5. Device Holder

The positioning system allows obtaining cheek and tilting position with a very good accuracy. In compliance with CENELEC, the tilt angle uncertainty is lower than 1 degree.



Serial Number	Holder Material	Permittivity	Loss Tangent
SN 16/15 MSH100	Delrin	3.7	0.005

2.6. Test Equipment List

This table gives a complete overview of the SAR measurement equipment.

Devices used during the test described are marked

	Manufacturer	Name of Equipment	Type/Model	Serial Number	Calibration	
					Last Cal.	Due Date
<input checked="" type="checkbox"/>	MVG	E FIELD PROBE	SSE2	SN 08/16 EPGO287	Feb. 01, 2022	Jan. 31, 2023
<input checked="" type="checkbox"/>	MVG	750 MHz Dipole	SID750	SN 03/15 DIP 0G750-355	Mar. 01, 2021	Feb. 28, 2024
<input checked="" type="checkbox"/>	MVG	835 MHz Dipole	SID835	SN 03/15 DIP 0G835-347	Mar. 01, 2021	Feb. 28, 2024
<input type="checkbox"/>	MVG	900 MHz Dipole	SID900	SN 03/15 DIP 0G900-348	Mar. 01, 2021	Feb. 28, 2024
<input checked="" type="checkbox"/>	MVG	1800 MHz Dipole	SID1800	SN 03/15 DIP 1G800-349	Mar. 01, 2021	Feb. 28, 2024
<input checked="" type="checkbox"/>	MVG	1900 MHz Dipole	SID1900	SN 03/15 DIP 1G900-350	Mar. 01, 2021	Feb. 28, 2024
<input type="checkbox"/>	MVG	2000 MHz Dipole	SID2000	SN 03/15 DIP 2G000-351	Mar. 01, 2021	Feb. 28, 2024
<input checked="" type="checkbox"/>	MVG	2450 MHz Dipole	SID2450	SN 03/15 DIP 2G450-352	Mar. 01, 2021	Feb. 28, 2024
<input checked="" type="checkbox"/>	MVG	2600 MHz Dipole	SID2600	SN 03/15 DIP 2G600-356	Mar. 01, 2021	Feb. 28, 2024
<input type="checkbox"/>	MVG	5000 MHz Dipole	SWG5500	SN 13/14 WGA 33	Mar. 01, 2021	Feb. 28, 2024
<input checked="" type="checkbox"/>	MVG	Liquid measurement Kit	SCLMP	SN 21/15 OCPG 72	NCR	NCR
<input checked="" type="checkbox"/>	MVG	Power Amplifier	N.A	AMPLISAR_28/14_003	NCR	NCR
<input checked="" type="checkbox"/>	KEITHLEY	Millivoltmeter	2000	4072790	NCR	NCR
<input checked="" type="checkbox"/>	R&S	Universal radio communication tester	CMU200	117858	Jun. 17, 2022	Jun. 16, 2023
<input checked="" type="checkbox"/>	R&S	Wideband radio communication tester	CMW500	103917	Jun. 17, 2022	Jun. 16, 2023
<input checked="" type="checkbox"/>	HP	Network Analyzer	8753D	3410J01136	Jun. 17, 2022	Jun. 16, 2023
<input checked="" type="checkbox"/>	Agilent	MXG Vector Signal Generator	N5182A	MY47070317	Jun. 16, 2022	Jun. 15, 2023

<input checked="" type="checkbox"/>	Agilent	Power meter	E4419B	MY45102538	Jun. 17, 2022	Jun. 16, 2023
<input checked="" type="checkbox"/>	Agilent	Power sensor	E9301A	MY41495644	Jun. 17, 2022	Jun. 16, 2023
<input checked="" type="checkbox"/>	Agilent	Power sensor	E9301A	US39212148	Jun. 17, 2022	Jun. 16, 2023
<input checked="" type="checkbox"/>	MCLI/USA	Directional Coupler	CB11-20	0D2L51502	Jul. 17, 2020	Jul. 16, 2023

3. SAR Measurement Procedures

The measurement procedures are as follows:

<Conducted power measurement>

- (a) For WWAN power measurement, use base station simulator to configure EUT WWAN transmission in conducted connection with RF cable, at maximum power in each supported wireless interface and frequency band.
- (b) Read the WWAN RF power level from the base station simulator.
- (c) For Wi-Fi/BT power measurement, use engineering software to configure EUT Wi-Fi/BT continuously transmission, at maximum RF power in each supported wireless interface and frequency band.
- (d) Connect EUT RF port through RF cable to the power meter, and measure Wi-Fi/BT output power.

<SAR measurement>

- (a) Use base station simulator to configure EUT WWAN transmission in radiated connection, and engineering software to configure EUT Wi-Fi/BT continuously transmission, at maximum RF power, in the highest power channel.
- (b) Place the EUT in the positions as Appendix A demonstrates.
- (c) Set scan area, grid size and other setting on the OPENSAR software.
- (d) Measure SAR results for the highest power channel on each testing position.
- (e) Find out the largest SAR result on these testing positions of each band.
- (f) Measure SAR results for other channels in worst SAR testing position if the reported SAR of highest power channel is larger than 0.8 W/kg.

According to the test standard, the recommended procedure for assessing the peak spatial-average SAR value consists of the following steps:

- (a) Power reference measurement
- (b) Area scan
- (c) Zoom scan
- (d) Power drift measurement

3.1. Power Reference

The Power Reference Measurement and Power Drift Measurements are for monitoring the power drift of the device under test in the batch process. The minimum distance of probe sensors to surface determines the closest measurement point to phantom surface. This distance cannot be smaller than the distance of sensor calibration points to probe tip as defined in the probe properties.

3.2. Area scan & Zoom scan

The area scan is a 2D scan to find the hot spot location on the DUT. The zoom scan is a 3D scan

above the hot spot to calculate the 1g and 10g SAR value.

Measurement of the SAR distribution with a grid of 8 to 16 mm * 8 to 16 mm and a constant distance to the inner surface of the phantom. Since the sensors cannot directly measure at the inner phantom surface, the values between the sensors and the inner phantom surface are extrapolated. With these values the area of the maximum SAR is calculated by an interpolation scheme. Around this point, a cube of 30 * 30 * 30 mm or 32 * 32 * 32 mm is assessed by measuring 5 or 8 * 5 or 8 * 4 or 5 mm. With these data, the peak spatial-average SAR value can be calculated.

From the scanned SAR distribution, identify the position of the maximum SAR value, in addition identify the positions of any local maxima with SAR values within 2 dB of the maximum value that will not be within the zoom scan of other peaks; additional peaks shall be measured only when the primary peak is within 2 dB of the SAR compliance limit (e.g., 1 W/kg for 1,6 W/kg 1 g limit, or 1,26 W/kg for 2 W/kg, 10 g limit).

Area scan & Zoom scan scan parameters extracted from FCC KDB 865664 D01 SAR measurement 100 MHz to 6 GHz.

		≤ 3 GHz	> 3 GHz
Maximum distance from closest measurement point (geometric center of probe sensors) to phantom surface		5 ± 1 mm	$\frac{1}{2} \cdot \delta \cdot \ln(2) \pm 0.5$ mm
Maximum probe angle from probe axis to phantom surface normal at the measurement location		30° ± 1°	20° ± 1°
Maximum area scan spatial resolution: Δx_{Area} , Δy_{Area}		≤ 2 GHz: ≤ 15 mm 2 – 3 GHz: ≤ 12 mm	3 – 4 GHz: ≤ 12 mm 4 – 6 GHz: ≤ 10 mm
		When the x or y dimension of the test device, in the measurement plane orientation, is smaller than the above, the measurement resolution must be ≤ the corresponding x or y dimension of the test device with at least one measurement point on the test device.	
Maximum zoom scan spatial resolution: Δx_{Zoom} , Δy_{Zoom}		≤ 2 GHz: ≤ 8 mm 2 – 3 GHz: ≤ 5 mm*	3 – 4 GHz: ≤ 5 mm* 4 – 6 GHz: ≤ 4 mm*
Maximum zoom scan spatial resolution, normal to phantom surface	uniform grid: $\Delta z_{Zoom}(n)$	≤ 5 mm	3 – 4 GHz: ≤ 4 mm 4 – 5 GHz: ≤ 3 mm 5 – 6 GHz: ≤ 2 mm
	graded grid	$\Delta z_{Zoom}(1)$: between 1 st two points closest to phantom surface	≤ 4 mm 3 – 4 GHz: ≤ 3 mm 4 – 5 GHz: ≤ 2.5 mm 5 – 6 GHz: ≤ 2 mm
		$\Delta z_{Zoom}(n>1)$: between subsequent points	≤ 1.5 · $\Delta z_{Zoom}(n-1)$
Minimum zoom scan volume	x, y, z	≥ 30 mm	3 – 4 GHz: ≥ 28 mm 4 – 5 GHz: ≥ 25 mm 5 – 6 GHz: ≥ 22 mm

Note: δ is the penetration depth of a plane-wave at normal incidence to the tissue medium; see draft standard IEEE P1528-2011 for details.

* When zoom scan is required and the *reported* SAR from the *area scan based 1-g SAR estimation* procedures of KDB 447498 is ≤ 1.4 W/kg, ≤ 8 mm, ≤ 7 mm and ≤ 5 mm zoom scan resolution may be applied, respectively, for 2 GHz to 3 GHz, 3 GHz to 4 GHz and 4 GHz to 6 GHz.

3.3. Description of interpolation/extrapolation scheme

The local SAR inside the phantom is measured using small dipole sensing elements inside a probe body. The probe tip must not be in contact with the phantom surface in order to minimise measurements errors, but the highest local SAR will occur at the surface of the phantom.

An extrapolation is used to determine these highest local SAR values. The extrapolation is based on a fourth-order least-square polynomial fit of measured data. The local SAR value is then extrapolated from the liquid surface with a 1 mm step.

The measurements have to be performed over a limited time (due to the duration of the battery) so the step of measurement is high. It could vary between 5 and 8 mm. To obtain an accurate assessment of the maximum SAR averaged over 10 grams and 1 gram requires a very fine resolution in the three dimensional scanned data array.

3.4. Volumetric Scan

The volumetric scan consists of a full 3D scan over a specific area. This 3D scan is useful for multi Tx SAR measurement. Indeed, it is possible with OpenSAR to add, point by point, several volumetric scans to calculate the SAR value of the combined measurement as it is defined in the standard IEEE1528 and IEC62209.

3.5. Power Drift

All SAR testing is under the EUT installed with a full charged battery and transmit maximum output power. In OpenSAR measurement software, the power reference measurement and power drift measurement procedures are used for monitoring the power drift of EUT during SAR test. Both these procedures measure the field at a specified reference position before and after the SAR testing. The software will calculate the field difference in V/m. If the power drifts more than $\pm 5\%$, the SAR will be retested.

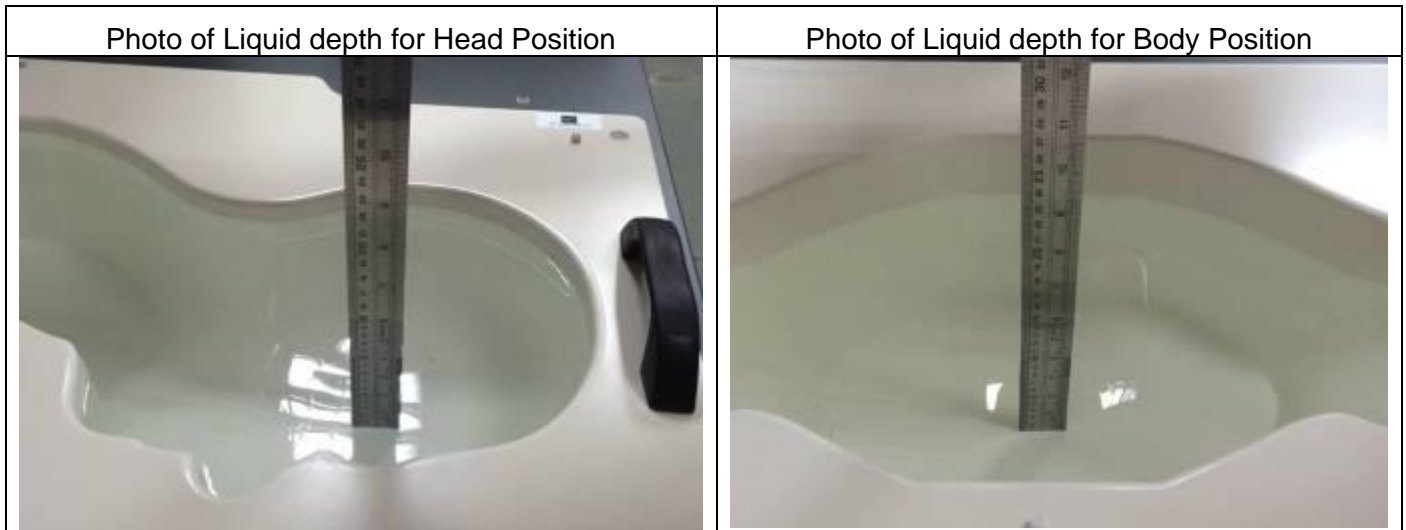
4. System Verification Procedure

4.1. Tissue Verification

The following tissue formulations are provided for reference only as some of the parameters have not been thoroughly verified. The composition of ingredients may be modified accordingly to achieve the desired target tissue parameters required for routine SAR evaluation.

Ingredients (% of weight)	Head Tissue									
	750	835	900	1800	1900	2000	2450	2600	5200	5800
Frequency Band (MHz)										
Water	34.40	34.40	34.40	55.36	55.36	57.87	57.87	57.87	65.53	65.53
NaCl	0.79	0.79	0.79	0.35	0.35	0.16	0.16	0.16	0.00	0.00
1,2-Propanediol	64.81	64.81	64.81	0.00	0.00	0.00	0.00	0.00	0.00	0.00
Triton X-100	0.00	0.00	0.00	30.45	30.45	19.97	19.97	19.97	24.24	24.24
DGBE	0.00	0.00	0.00	13.84	13.84	22.00	22.00	22.00	10.23	10.23

For SAR measurement of the field distribution inside the phantom, the phantom must be filled with homogeneous tissue simulating liquid to a depth of at least 15 cm. For head SAR testing, the liquid depth from the ear reference point (ERP) of the phantom to the liquid top surface is larger than 15 cm.



4.1.1. Tissue Dielectric Parameter Check Results

The simulating liquids should be checked at the beginning of a series of SAR measurements to determine of the dielectric parameter are within the tolerances of the specified target values. The measured conductivity and relative permittivity should be within $\pm 5\%$ of the target values.

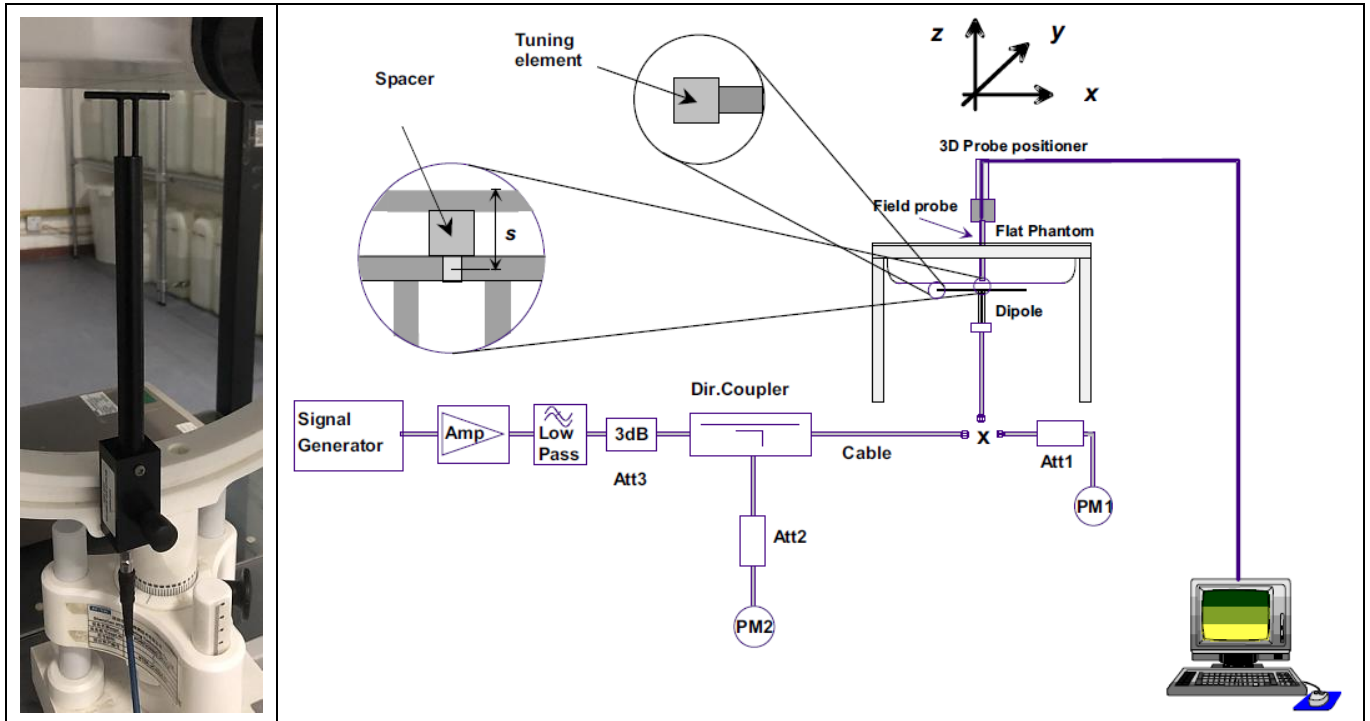
Tissue Type	Measured Frequency (MHz)	Target Tissue		Measured Tissue		Liquid Temp.	Test Date
		$\epsilon_r (\pm 5\%)$	σ (S/m) ($\pm 5\%$)	ϵ_r	σ (S/m)		
Head 750	750	41.96 (39.86~44.06)	0.89 (0.85~0.93)	40.22	0.89	21.7 °C	Oct. 09, 2022
Head 850	835	41.50 (39.43~43.58)	0.90 (0.86~0.95)	41.25	0.92	21.3 °C	Oct. 20, 2022
Head 1800	1800	40.00 (38.00~42.00)	1.40 (1.33~1.47)	38.57	1.37	21.8 °C	Oct. 14, 2022
Head 1900	1900	40.00 (38.00~42.00)	1.40 (1.33~1.47)	38.35	1.45	21.2 °C	Oct. 08, 2022
Head 2450	2450	39.20 (37.24~41.16)	1.80 (1.71~1.89)	37.67	1.76	21.4 °C	Oct. 18, 2022
Head 2600	2600	39.01 (37.06~40.96)	1.96 (1.86~2.06)	37.58	1.92	21.6 °C	Oct. 17, 2022

NOTE: The dielectric parameters of the tissue-equivalent liquid should be measured under similar ambient conditions and within 2 °C of the conditions expected during the SAR evaluation to satisfy protocol requirements.

4.2. System Verification Procedure

The system verification is performed for verifying the accuracy of the complete measurement system and performance of the software. The dipole is connected to the signal source consisting of signal generator and amplifier via a directional coupler, N-connector cable and adaption to SMA. It is fed with a power of 100mW (below 5GHz) or 100mW (above 5GHz). To adjust this power a power meter is used. The power sensor is connected to the cable before the system verification to measure the power at this point and do adjustments at the signal generator. At the outputs of the directional coupler both return loss as well as forward power are controlled during the system verification to make sure that emitted power at the dipole is kept constant. This can also be checked by the power drift measurement after the test (result on plot).

The system verification is shown as below picture:



4.2.1. System Verification Results

Comparing to the original SAR value provided by SATIMO, the verification data should be within its specification of $\pm 10\%$. Below table shows the target SAR and measured SAR after normalized to 1W input power. The table below indicates the system performance verification can meet the variation criterion and the plots can be referred to Appendix B of this report.

System Verification	Target SAR (1W) ($\pm 10\%$)		Measured SAR (Normalized to 1W)		Liquid Temp.	Test Date
	1-g (W/Kg)	10-g (W/Kg)	1-g (W/Kg)	10-g (W/Kg)		
750MHz	8.53 (7.68~9.38)	5.56 (5.01~6.11)	8.49	5.27	21.7 °C	Oct. 09, 2022
835MHz	9.84 (8.86~10.82)	6.22 (5.60~6.84)	10.01	5.88	21.3 °C	Oct. 20, 2022
1800MHz	37.96 (34.17~41.75)	19.81 (17.83~21.79)	38.31	19.61	21.8 °C	Oct. 14, 2022
1900MHz	40.37 (36.34~44.40)	20.48 (18.44~22.52)	37.40	21.30	21.2 °C	Oct. 08, 2022
2450MHz	53.69 (48.33~59.05)	23.94 (21.55~26.33)	55.40	24.84	21.4 °C	Oct. 18, 2022
2600MHz	55.83 (50.25~61.41)	24.19 (21.78~26.60)	60.30	23.48	21.6 °C	Oct. 17, 2022

5. SAR Measurement variability and uncertainty

5.1. SAR measurement variability

Per KDB865664 D01 SAR measurement 100 MHz to 6 GHz, SAR measurement variability must be assessed for each frequency band, which is determined by the SAR probe calibration point and tissue-equivalent medium used for the device measurements. The additional measurements are repeated after the completion of all measurements requiring the same head or body tissue-equivalent medium in a frequency band. The test device should be returned to ambient conditions (normal room temperature) with the battery fully charged before it is re-mounted on the device holder for the repeated measurement(s) to minimize any unexpected variations in the repeated results.

- 1) Repeated measurement is not required when the original highest measured SAR is < 0.80 W/kg; steps 2) through 4) do not apply.
- 2) When the original highest measured SAR is ≥ 0.80 W/kg, repeat that measurement once.
- 3) Perform a second repeated measurement only if the ratio of largest to smallest SAR for the original and first repeated measurements is > 1.20 or when the original or repeated measurement is ≥ 1.45 W/kg (~ 10% from the 1-g SAR limit).
- 4) Perform a third repeated measurement only if the original, first or second repeated measurement is ≥ 1.5 W/kg and the ratio of largest to smallest SAR for the original, first and second repeated measurements is > 1.20 .

5.2. SAR measurement uncertainty

Per KDB865664 D01 SAR Measurement 100 MHz to 6 GHz, when the highest measured 1-g SAR within a frequency band is < 1.5 W/kg, the extensive SAR measurement uncertainty analysis described in IEEE Std 1528-2013 is not required in SAR reports submitted for equipment approval. The equivalent ratio (1.5/1.6) is applied to extremity and occupational exposure conditions.

6. RF Exposure Positions

6.1. Wireless Router Devices

Some battery-operated handsets have the capability to transmit and receive user through simultaneous transmission of WLAN simultaneously with a separate licensed transmitter. The FCC has provided guidance in FCC KDB Publication 941225 D06 where SAR test considerations for handsets ($L \times W \geq 9 \text{ cm} \times 5 \text{ cm}$) are based on a composite test separation distance of 10mm from the front, back and edges of the device containing transmitting antennas within 2.5cm of their edges, determined from general mixed use conditions for this type of devices. Since the hotspot SAR results may overlap with the body-worn accessory SAR requirements, the more conservative configurations can be considered, thus excluding some body-worn accessory SAR tests.

When the user enables the personal wireless router functions for the handset, actual operations include simultaneous transmission of both the WLAN transmitter and another licensed transmitter. Both transmitters often do not transmit at the same transmitting frequency and thus cannot be evaluated for SAR under actual use conditions due to the limitations of the SAR assessment probes. Therefore, SAR must be evaluated for each frequency transmission and mode separately and spatially summed with the WLAN transmitter according to FCC KDB Publication 447498 D01 publication procedures. The "Portable Hotspot" feature on the handset was NOT activated during SAR assessments, to ensure the SAR measurements were evaluated for a single transmission frequency RF signal at a time.

7. RF Output Power

7.1. WCDMA Conducted Power

WCDMA Band 2		Burst-Averaged output Power (dBm)			
Tx Channel	Tune-up (dBm)	9262	9400	9538	
Frequency (MHz)		1852.4	1880	1907.6	
RMC12.2K	22.50	22.40	22.45	22.47	
HSDPA Sub 1	22.50	22.16	21.97	21.85	
HSDPA Sub 2	22.00	21.88	21.73	21.72	
HSDPA Sub 3	21.50	21.29	21.13	21.37	
HSDPA Sub 4	21.50	20.98	21.25	21.02	
HSUPA Sub 1	22.50	22.28	21.78	21.83	
HSUPA Sub 2	22.50	22.13	22.00	21.92	
HSUPA Sub 3	22.00	21.67	21.78	21.76	
HSUPA Sub 4	22.50	22.06	21.94	21.86	
HSUPA Sub 5	22.00	21.75	21.90	21.58	
WCDMA Band 5		Burst-Averaged output Power (dBm)			
Tx Channel	Tune-up (dBm)	4132	4182	4233	
Frequency (MHz)		826.4	836.4	846.6	
RMC12.2K	22.50	22.21	22.22	22.26	
HSDPA Sub 1	22.00	21.95	21.84	21.80	
HSDPA Sub 2	22.00	21.57	21.51	21.66	
HSDPA Sub 3	21.50	21.19	21.27	21.44	
HSDPA Sub 4	21.50	21.26	20.90	21.13	
HSUPA Sub 1	22.00	21.47	21.69	21.67	
HSUPA Sub 2	22.50	22.03	21.82	21.83	
HSUPA Sub 3	21.50	21.47	21.43	21.28	
HSUPA Sub 4	22.00	21.81	21.77	21.80	
HSUPA Sub 5	22.00	21.69	21.75	21.58	

7.2. LTE Conducted Power

Band	Band Width	Modulation	RB Configuration		Tune-up (dBm)	Channel/Frequency(MHz)		
			RB Size	RB Offset		18607/1850.7	18900/1880	19193/1909.3
LTE Band	1.4MHz	QPSK	1	0	21.50	21.06	21.25	21.00
			1	2	21.50	21.07	21.24	21.04

2			1	5	21.50	21.08	21.14	21.04
			3	0	21.50	20.94	21.13	20.95
			3	1	21.50	20.97	21.17	20.94
			3	2	21.50	20.87	21.07	20.94
			6	0	20.50	19.87	20.08	19.89
		16QAM	1	0	21.50	21.02	20.32	20.27
			1	2	21.50	21.18	20.26	20.32
			1	5	21.50	21.00	20.28	20.29
			3	0	20.50	20.23	20.23	20.32
			3	1	20.50	20.23	20.25	20.31
			3	2	20.50	20.24	20.19	20.34
			6	0	19.50	19.27	19.23	19.12
Band	Band Width	Modulation	RB Configuration		Tune-up (dBm)	Channel/Frequency(MHz)		
			RB Size	RB Offset		18615/1851.5	18900/1880	19185/1908.5
LTE Band 2	3MHz	QPSK	1	0	21.50	20.99	21.26	21.03
			1	7	21.50	21.01	21.31	21.09
			1	14	21.50	21.00	21.18	21.11
			8	0	20.50	19.92	20.17	19.88
			8	4	20.50	19.91	20.18	19.86
			8	7	20.50	19.99	20.11	19.99
			15	0	20.50	19.83	20.12	19.86
		16QAM	1	0	21.50	21.21	20.39	20.31
			1	7	21.50	21.15	20.34	20.32
			1	14	21.50	21.11	20.31	20.41
			8	0	19.50	18.99	19.31	18.99
			8	4	19.50	18.98	19.27	19.03
			8	7	19.50	18.87	19.27	19.00
Band	Band Width	Modulation	RB Configuration		Tune-up (dBm)	Channel/Frequency(MHz)		
			RB Size	RB Offset		18625/1852.5	18900/1880	19175/1907.5
LTE Band 2	5MHz	QPSK	1	0	21.50	20.94	21.27	20.76
			1	12	21.50	20.90	21.26	20.83
			1	24	21.50	20.78	21.18	20.91
			12	0	20.50	20.03	20.26	19.91
			12	6	20.50	20.01	20.25	19.95
			12	11	20.50	20.02	20.12	19.92

Band	Band Width	Modulation	RB Configuration		Tune-up (dBm)	Channel/Frequency(MHz)		
			RB Size	RB Offset		18650/1855	18900/1880	19150/1905
		16QAM	25	0	20.50	20.01	20.13	20.01
			1	0	21.00	20.49	20.50	19.95
			1	12	21.00	20.36	20.42	19.94
			1	24	21.00	20.32	20.34	20.05
			12	0	19.50	19.00	19.25	18.95
			12	6	19.50	18.99	19.19	19.01
			12	11	19.50	18.97	19.14	19.04
			25	0	19.50	19.14	19.38	18.85
LTE Band 2	10MHz	QPSK	1	0	23.00	22.33	22.63	22.03
			1	24	23.00	22.20	22.67	22.10
			1	49	23.00	22.35	22.55	22.30
			25	0	22.00	21.14	21.55	21.08
			25	12	22.00	21.18	21.57	21.12
			25	24	22.00	21.21	21.59	21.22
		16QAM	50	0	22.00	21.18	21.50	21.07
			1	0	23.00	21.83	22.68	21.09
			1	24	23.00	21.62	22.60	21.18
			1	49	23.00	21.70	22.55	21.36
			25	0	21.00	20.34	20.66	20.22
			25	12	21.00	20.30	20.75	20.18
			25	24	21.00	20.29	20.68	20.23
			50	0	21.00	20.25	20.71	20.25
	Band Width	Modulation	RB Configuration		Tune-up (dBm)	Channel/Frequency(MHz)		
			RB Size	RB Offset		18675/1857.5	18900/1880	19125/1902.5
LTE Band 2	15MHz	QPSK	1	0	23.00	22.34	22.63	22.07
			1	37	23.00	22.18	22.68	21.98
			1	74	23.00	22.22	22.58	22.18
			36	0	22.00	21.29	21.57	21.01
			36	18	22.00	21.20	21.54	21.02
			36	37	22.00	21.16	21.57	21.09
			75	0	22.00	21.15	21.54	21.16
		16QAM	1	0	23.00	22.59	21.67	21.79
			1	37	23.00	22.29	21.68	21.70
			1	74	23.00	22.45	21.46	21.95

Band	Band Width	Modulation	RB Configuration		Tune-up (dBm)	Channel/Frequency(MHz)		
			RB Size	RB Offset		18700/1860	18900/1880	19100/1900
			36	0	21.00	20.37	20.79	20.26
			36	18	21.00	20.31	20.76	20.21
			36	37	21.00	20.29	20.77	20.22
			75	0	21.00	20.37	20.67	20.27
LTE Band 2	20MHz	QPSK	1	0	23.00	22.50	22.43	22.40
			1	49	23.00	22.33	22.53	22.16
			1	99	23.00	22.53	22.28	22.43
			50	0	22.00	21.26	21.52	21.12
			50	24	22.00	21.30	21.55	21.11
			50	49	22.00	21.23	21.56	21.17
			100	0	22.00	21.26	21.52	21.26
		16QAM	1	0	21.50	21.15	21.29	21.24
			1	49	21.50	20.96	21.34	21.03
			1	99	21.50	21.17	21.09	21.25
			50	0	21.00	20.45	20.59	20.21
			50	24	21.00	20.38	20.72	20.24
			50	49	21.00	20.47	20.46	20.28
			100	0	21.00	20.31	20.58	20.34

Band	Band Width	Modulation	RB Configuration		Tune-up (dBm)	Channel/Frequency(MHz)		
			RB Size	RB Offset		19957/1710.7	20175/1732.5	20393/1754.3
LTE Band 4	1.4MHz	QPSK	1	0	23.00	22.70	22.77	22.74
			1	2	23.00	22.70	22.78	22.78
			1	5	23.00	22.72	22.74	22.72
			3	0	23.00	22.76	22.67	22.80
			3	1	23.00	22.79	22.70	22.86
			3	2	23.00	22.70	22.58	22.80
			6	0	22.00	21.68	21.62	21.81
		16QAM	1	0	23.00	21.85	22.76	22.58
			1	2	23.00	21.89	22.79	22.53
			1	5	23.00	21.94	22.75	22.52
			3	0	22.50	21.71	21.85	22.23
			3	1	22.50	21.79	21.87	22.14
			3	2	22.50	21.76	21.84	22.25

Band	Band Width	Modulation	RB Configuration		Tune-up (dBm)	Channel/Frequency(MHz)		
			RB Size	RB Offset		19965/1711.5	20175/1732.5	20385/1753.5
			6	0	21.00	20.82	20.98	20.78
LTE Band 4	3MHz	QPSK	1	0	23.00	22.77	22.63	23.00
			1	7	23.00	22.77	22.57	23.00
			1	14	23.00	22.69	22.57	23.00
			8	0	22.00	21.78	21.60	21.77
			8	4	22.00	21.67	21.60	21.80
			8	7	22.00	21.63	21.58	21.76
			15	0	22.00	21.79	21.65	21.77
		16QAM	1	0	23.00	22.89	22.29	22.25
			1	7	23.00	22.84	22.36	22.38
			1	14	23.00	22.81	22.34	22.26
			8	0	21.00	20.78	20.94	20.88
			8	4	21.00	20.68	20.93	20.92
			8	7	21.00	20.64	20.94	20.89
			15	0	21.00	20.84	20.86	20.91
Band	Band Width	Modulation	RB Configuration		Tune-up (dBm)	Channel/Frequency(MHz)		
			RB Size	RB Offset		19975/1712.5	20175/1732.5	20375/1752.5
LTE Band 4	5MHz	QPSK	1	0	23.00	22.66	22.77	22.66
			1	12	23.00	22.54	22.70	22.69
			1	24	23.00	22.60	22.70	22.73
			12	0	22.00	21.76	21.55	21.69
			12	6	22.00	21.79	21.70	21.71
			12	11	22.00	21.68	21.57	21.81
			25	0	22.00	21.66	21.71	21.83
		16QAM	1	0	22.50	22.08	21.31	21.98
			1	12	22.50	22.02	21.29	22.01
			1	24	22.50	21.95	21.32	22.03
			12	0	21.00	20.71	20.60	20.86
			12	6	21.00	20.65	20.59	20.81
			12	11	21.00	20.75	20.65	20.87
			25	0	21.00	20.83	20.75	20.82
Band	Band Width	Modulation	RB Configuration		Tune-up (dBm)	Channel/Frequency(MHz)		
			RB	RB		20000/1715	20175/1732.5	20350/1750

Band	Band Width	Modulation	RB Configuration		Tune-up (dBm)	Channel/Frequency(MHz)		
			RB Size	RB Offset		20025/1717.5	20175/1732.5	20325/1747.5
LTE Band 4	10MHz	QPSK	1	0	23.00	22.71	22.63	22.92
			1	24	23.00	22.65	22.62	23.00
			1	49	23.00	22.65	22.67	23.00
			25	0	22.00	21.62	21.69	21.58
			25	12	22.00	21.74	21.64	21.73
			25	24	22.00	21.74	21.60	21.68
		16QAM	50	0	22.00	21.70	21.73	21.79
			1	0	23.00	22.96	21.69	22.02
			1	24	23.00	22.89	21.72	22.02
			1	49	23.00	22.91	21.76	22.14
			25	0	21.00	20.69	20.80	20.82
			25	12	21.00	20.61	20.79	20.86
			25	24	21.00	20.70	20.78	20.90
			50	0	21.00	20.66	20.78	20.90
LTE Band 4	15MHz	QPSK	1	0	23.00	22.72	22.66	22.55
			1	37	23.00	22.62	22.65	22.59
			1	74	23.00	22.64	22.62	22.63
			36	0	22.00	21.72	21.53	21.74
			36	18	22.00	21.64	21.68	21.66
			36	37	22.00	21.70	21.66	21.76
			75	0	22.00	21.65	21.58	21.71
		16QAM	1	0	23.00	22.97	21.72	22.35
			1	37	23.00	22.91	21.64	22.38
			1	74	23.00	22.88	21.75	22.47
			36	0	21.00	20.73	20.88	20.72
			36	18	21.00	20.78	20.84	20.86
			36	37	21.00	20.78	20.90	20.78
			75	0	21.00	20.81	20.73	20.91
Band	Band Width	Modulation	RB Configuration		Tune-up (dBm)	Channel/Frequency(MHz)		
			RB Size	RB Offset		20050/1720	20175/1732.5	20300/1745
LTE Band 4	20MHz	QPSK	1	0	23.00	22.81	22.75	22.50
			1	49	23.00	22.82	22.76	22.61
			1	99	23.00	22.82	22.85	22.77

			50	0	22.00	21.54	21.63	21.63
			50	24	22.00	21.50	21.56	21.67
			50	49	22.00	21.68	21.52	21.79
			100	0	22.00	21.58	21.64	21.67
		16QAM	1	0	22.50	21.96	21.61	21.85
			1	49	22.50	21.83	21.54	21.94
			1	99	22.50	21.87	21.59	22.09
			50	0	21.00	20.75	20.68	20.74
			50	24	21.00	20.65	20.73	20.77
			50	49	21.00	20.66	20.69	20.93
			100	0	21.00	20.75	20.76	20.74

Band	Band Width	Modulation	RB Configuration		Tune-up (dBm)	Channel/Frequency(MHz)		
			RB Size	RB Offset		20407/824.7	20525/836.5	20643/848.3
LTE Band 5	1.4MHz	QPSK	1	0	23.00	22.67	22.65	22.85
			1	2	23.00	22.63	22.63	22.81
			1	5	23.00	22.38	22.61	22.80
			3	0	23.00	22.57	22.63	22.69
			3	1	23.00	22.65	22.76	22.59
			3	2	23.00	22.66	22.67	22.65
			6	0	22.00	21.49	21.59	21.50
		16QAM	1	0	23.00	22.71	22.23	22.70
			1	2	23.00	22.68	22.25	22.65
			1	5	23.00	22.64	22.17	22.67
			3	0	22.50	21.84	21.66	22.12
			3	1	22.50	21.85	21.72	21.47
			3	2	22.50	21.85	21.76	21.51
6	0	21.00	20.98	20.63	20.60			

Band	Band Width	Modulation	RB Configuration		Tune-up (dBm)	Channel/Frequency(MHz)		
			RB Size	RB Offset		20415/825.5	20525/836.5	20635/847.5
LTE Band 5	3MHz	QPSK	1	0	23.00	22.73	22.58	22.86
			1	7	23.00	22.63	22.60	22.92
			1	14	23.00	22.63	22.62	22.87
			8	0	22.00	21.64	21.52	21.53
			8	4	22.00	21.67	21.57	21.63
			8	7	22.00	21.62	21.58	21.48

Band	Band Width	Modulation	RB Configuration		Tune-up (dBm)	Channel/Frequency(MHz)		
			RB Size	RB Offset		20425/826.5	20525/836.5	20625/846.5
		16QAM	15	0	22.00	21.50	21.55	21.59
			1	0	23.00	22.58	22.23	22.62
			1	7	23.00	22.50	22.31	22.59
			1	14	23.00	22.52	22.26	22.64
			8	0	21.00	20.82	20.81	20.57
			8	4	21.00	20.80	20.89	20.56
			8	7	21.00	20.59	20.87	20.59
			15	0	21.00	20.98	20.75	20.61
LTE Band 5	5MHz	QPSK	1	0	23.00	22.45	22.70	22.49
			1	12	23.00	22.47	22.74	22.39
			1	24	23.00	22.49	22.67	22.41
			12	0	22.00	21.53	21.58	21.49
			12	6	22.00	21.59	21.60	21.46
			12	11	22.00	21.58	21.59	21.51
		16QAM	25	0	22.00	21.55	21.53	21.48
			1	0	22.00	21.82	21.28	21.59
			1	12	22.00	21.76	21.32	21.50
			1	24	22.00	21.82	21.34	21.53
			12	0	21.00	20.81	20.54	20.65
			12	6	21.00	20.53	20.54	20.60
			12	11	21.00	20.51	20.54	20.50
			25	0	21.00	20.63	20.74	20.56
	Band Width	Modulation	RB Configuration		Tune-up (dBm)	Channel/Frequency(MHz)		
			RB Size	RB Offset		20450/829	20525/836.5	20600/844
LTE Band 5	10MHz	QPSK	1	0	23.00	22.57	22.54	22.89
			1	24	23.00	22.63	22.61	22.82
			1	49	23.00	22.59	22.63	22.87
			25	0	22.00	21.60	21.55	21.62
			25	12	22.00	21.56	21.68	21.62
			25	24	22.00	21.69	21.72	21.58
			50	0	22.00	21.65	21.64	21.52
		16QAM	1	0	23.00	22.71	21.65	21.64
			1	24	23.00	22.72	21.67	21.58
			1	49	23.00	22.78	21.67	21.61

			25	0	21.00	20.57	20.69	20.71
			25	12	21.00	20.99	20.70	20.72
			25	24	21.00	20.66	20.78	20.61
			50	0	21.00	20.94	20.76	20.71

Band	Band Width	Modulation	RB Configuration		Tune-up (dBm)	Channel/Frequency(MHz)		
			RB Size	RB Offset		20775/2502.5	21100/2535	21425/2567.5
LTE Band 7	5MHz	QPSK	1	0	23.00	22.48	22.44	22.61
			1	12	23.00	22.49	22.43	22.57
			1	24	23.00	22.62	22.50	22.63
			12	0	22.00	21.49	21.52	21.50
			12	6	22.00	21.52	21.54	21.56
			12	11	22.00	21.50	21.54	21.56
			25	0	22.00	21.60	21.67	21.59
		16QAM	1	0	22.00	21.71	21.69	21.67
			1	12	22.00	21.66	21.84	21.60
			1	24	22.00	21.70	21.77	21.63
			12	0	21.00	20.43	20.59	20.82
			12	6	21.00	20.75	20.59	20.85
			12	11	21.00	20.85	20.55	20.74
			25	0	21.50	21.01	20.57	21.05

Band	Band Width	Modulation	RB Configuration		Tune-up (dBm)	Channel/Frequency(MHz)		
			RB Size	RB Offset		20800/2505	21100/2535	21400/2565
LTE Band 7	10MHz	QPSK	1	0	23.00	22.38	22.62	22.80
			1	24	23.00	22.48	22.66	22.84
			1	49	23.00	22.49	22.66	22.83
			25	0	22.00	21.57	21.52	21.68
			25	12	22.00	21.57	21.64	21.59
			25	24	22.00	21.61	21.64	21.55
			50	0	22.00	21.62	21.64	21.57
		16QAM	1	0	23.00	22.54	21.61	21.58
			1	24	23.00	22.55	21.64	21.61
			1	49	23.00	22.59	21.67	21.51
			25	0	21.00	20.87	20.65	20.59
			25	12	21.00	20.46	20.57	20.93
			25	24	21.00	20.49	20.67	20.96

Band	Band Width	Modulation	RB Configuration		Tune-up (dBm)	Channel/Frequency(MHz)		
			RB Size	RB Offset		20825/2507.5	21100/2535	21375/2562.5
LTE Band 7	15MHz	QPSK	50	0	21.00	20.64	20.70	20.92
			1	0	23.00	22.45	22.70	22.55
			1	37	23.00	22.49	22.57	22.52
			1	74	23.00	22.44	22.67	22.46
			36	0	22.00	21.45	21.52	21.50
			36	18	22.00	21.56	21.56	21.67
		16QAM	36	37	22.00	21.51	21.55	21.59
			75	0	22.00	21.60	21.66	21.63
			1	0	23.00	22.69	21.54	22.21
			1	37	23.00	22.61	21.55	22.17
			1	74	23.00	22.77	21.52	22.22
			36	0	21.50	20.53	20.71	20.60
			36	18	21.50	20.50	20.68	20.55
			36	37	21.50	20.96	21.08	20.91
75	0	21.00	20.56	20.54	20.65			
Band	Band Width	Modulation	RB Configuration		Tune-up (dBm)	Channel/Frequency(MHz)		
			RB Size	RB Offset		20850/2510	21100/2535	21350/2560
LTE Band 7	20MHz	QPSK	1	0	23.00	22.45	22.53	22.56
			1	49	23.00	22.48	22.46	22.60
			1	99	23.00	22.51	22.62	22.57
			50	0	22.00	21.56	21.60	21.59
			50	24	22.00	21.54	21.49	21.46
			50	49	22.00	21.53	21.58	21.70
			100	0	22.00	21.43	21.51	21.51
		16QAM	1	0	22.50	21.28	21.71	21.52
			1	49	22.50	21.26	21.72	21.49
			1	99	22.50	21.32	22.17	21.51
			50	0	21.50	20.63	20.51	21.00
			50	24	21.50	20.63	20.54	20.66
			50	49	21.50	20.71	21.01	20.97
			100	0	21.00	20.49	20.57	20.73

Band	Band Width	Modulation	RB Configuration	Tune-up (dBm)	Channel/Frequency(MHz)
------	------------	------------	------------------	---------------	------------------------

Band	Band Width	Modulation	RB Configuration		Tune-up (dBm)	Channel/Frequency(MHz)		
			RB Size	RB Offset		23780/709	23790/710	23800/711
LTE Band 17	5MHz	QPSK	1	0	23.00	23755/706.5	23790/710	23825/713.5
			1	12	23.00	22.65	22.62	22.82
			1	24	23.00	22.63	22.66	22.82
			12	0	22.00	22.66	22.74	22.81
			12	6	22.00	21.70	21.68	21.83
			12	11	22.00	21.76	21.66	21.79
			25	0	22.00	21.73	21.75	21.85
		16QAM	1	0	22.50	21.72	21.78	21.92
			1	12	22.50	21.48	21.97	21.91
			1	24	22.50	21.41	22.00	21.92
			12	0	21.50	21.38	22.01	21.90
			12	6	21.50	20.64	21.17	21.05
			12	11	21.50	20.59	21.12	20.72
			25	0	21.50	21.14	21.10	20.73
LTE Band 17	10MHz	QPSK	1	0	23.50	22.68	22.70	22.98
			1	24	23.50	22.59	22.83	23.00
			1	49	23.50	22.72	22.89	23.14
			25	0	22.00	21.78	21.67	21.66
			25	12	22.00	21.77	21.75	21.64
			25	24	22.00	21.82	21.82	21.79
			50	0	22.00	21.68	21.78	21.75
		16QAM	1	0	23.00	22.87	22.32	21.73
			1	24	23.00	22.75	22.33	21.82
			1	49	23.00	22.92	22.36	21.81
			25	0	21.50	20.58	21.22	21.22
			25	12	21.50	21.06	21.18	21.19
			25	24	21.50	21.07	21.18	20.88
			50	0	21.50	21.04	21.23	21.18

7.3. WLAN & Bluetooth Output Power

Mode	Channel	Frequency (MHz)	Tune-up (dBm)	Output Power (dBm)
802.11b	1	2412	15.50	15.24

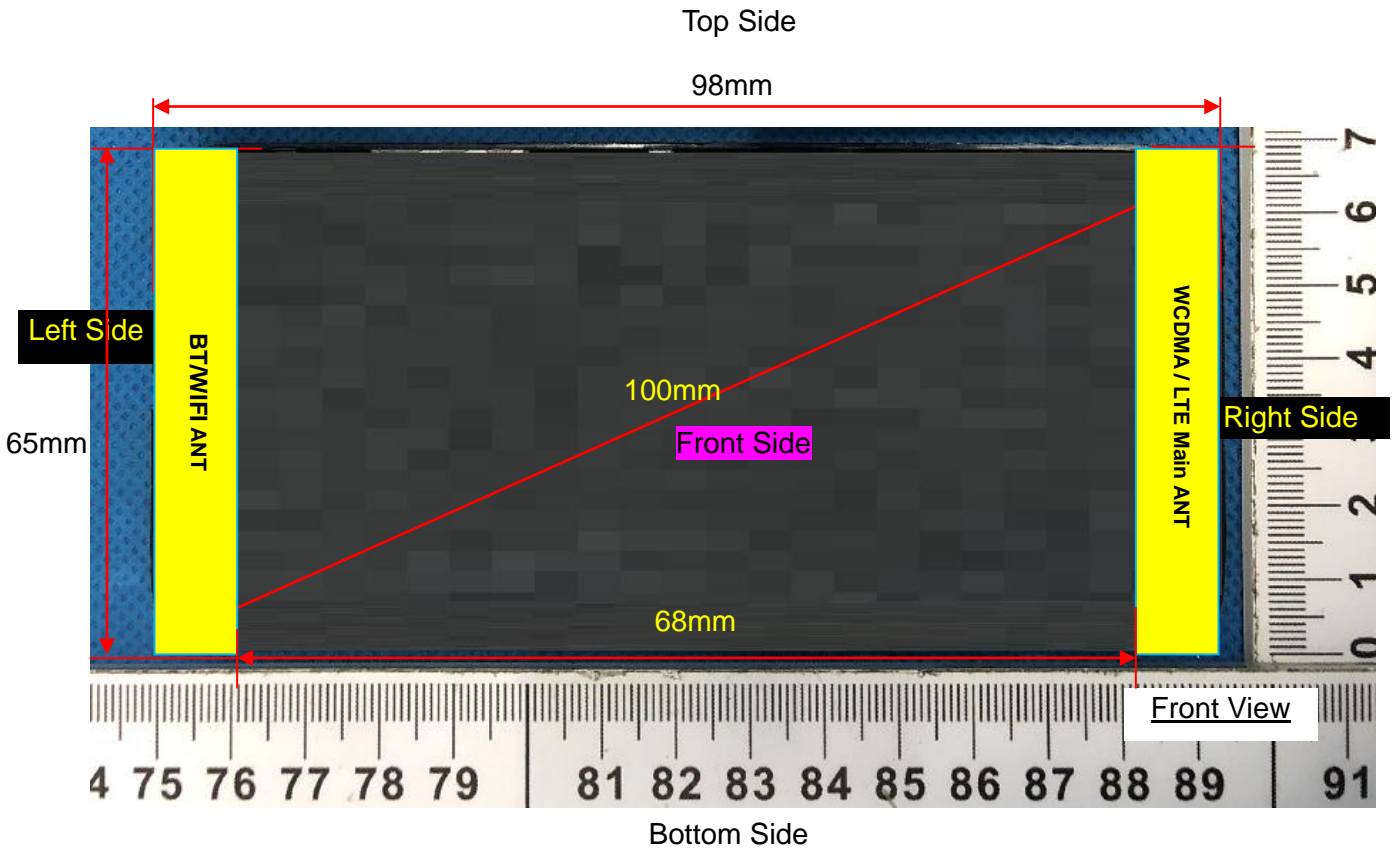
	6	2437	15.50	15.32
	11	2462	15.50	15.36
	1	2412	16.00	15.26
802.11g	6	2437	16.00	15.43
	11	2462	16.00	15.51
	1	2412	16.00	15.38
802.11n HT20	6	2437	16.00	15.58
	11	2462	16.00	15.58
	3	2422	15.50	15.14
802.11n HT40	6	2437	15.50	15.34
	9	2452	15.50	15.49

NOTE: Power measurement results of WLAN 2.4G.

DSSS max Power (dBm)	OFDM max Power (dBm)	DSSS max Power (mW)	OFDM max Power (mW)	DSSS SAR Value (W/Kg)	Adjusted OFDM SAR Value (W/Kg)
15.36	15.58	34.36	36.14	0.206	0.217

NOTE: The adjusted OFDM SAR value is 0.217 W/kg less than 1.200 W/kg, so OFDM SAR testing is not required.

8. Antenna Location



Note: Since the confidentiality request of EUT, the antenna location example diagram see as above.

Distance of the Antenna to the EUT surface/edge						
Antennas	Front Side	Back Side	Left Side	Right Side	Top Side	Bottom Side
WWAN Main ANT	≤ 25mm	≤ 25mm	> 25mm	≤ 25mm	≤ 25mm	≤ 25mm
WLAN & Bluetooth	≤ 25mm	≤ 25mm	≤ 25mm	> 25mm	≤ 25mm	≤ 25mm
Positions for SAR tests						
Antennas	Front Side	Back Side	Left Side	Right Side	Top Side	Bottom Side
WWAN Main ANT	Yes	Yes	NO	Yes	Yes	Yes
WLAN & Bluetooth	Yes	Yes	Yes	NO	Yes	Yes

9. SAR Results

9.1. SAR measurement Result

9.1.1. SAR measurement Result of WCDMA Band 2

Test Position of Hotspot with 10mm	Test channel /Freq.	Mode	SAR Value (W/kg)		Power Drift(%)	Conducted Power (dBm)	Tune-up Power (dBm)	Scaled SAR 1-g (W/Kg)	Date	Plot
			1-g	10-g						
Front Side	9400/1880	RMC12.2K	0.430	0.232	3.04	22.45	22.50	0.435	2022/10/08	
Back Side	9400/1880	RMC12.2K	0.816	0.444	0.83	22.45	22.50	0.825	2022/10/08	
Right Side	9400/1880	RMC12.2K	0.378	0.197	-2.08	22.45	22.50	0.382	2022/10/08	
Top Side	9400/1880	RMC12.2K	0.258	0.138	2.31	22.45	22.50	0.261	2022/10/08	
Bottom Side	9400/1880	RMC12.2K	0.252	0.132	-3.68	22.45	22.50	0.255	2022/10/08	
Back Side	9262/1852.4	RMC12.2K	0.906	0.492	-1.95	22.40	22.50	0.927	2022/10/08	1#
Back Side Repeated	9262/1852.4	RMC12.2K	0.890	0.485	0.23	22.40	22.50	0.911	2022/10/08	
Back Side	9538/1907.6	RMC12.2K	0.731	0.404	1.22	22.47	22.50	0.736	2022/10/08	

NOTE: Hotspot SAR test results of WCDMA Band 2

9.1.2. SAR measurement Result of WCDMA Band 5

Test Position of Hotspot with 10mm	Test channel /Freq.	Mode	SAR Value (W/kg)		Power Drift(%)	Conducted Power (dBm)	Tune-up Power (dBm)	Scaled SAR 1-g (W/Kg)	Date	Plot
			1-g	10-g						
Front Side	4182/836.4	RMC12.2K	0.440	0.314	-2.84	22.22	22.50	0.469	2022/10/20	
Back Side	4182/836.4	RMC12.2K	0.849	0.612	-0.06	22.22	22.50	0.906	2022/10/20	
Right Side	4182/836.4	RMC12.2K	0.401	0.280	-1.79	22.22	22.50	0.428	2022/10/20	
Top Side	4182/836.4	RMC12.2K	0.261	0.179	-3.02	22.22	22.50	0.278	2022/10/20	
Bottom Side	4182/836.4	RMC12.2K	0.270	0.195	2.76	22.22	22.50	0.288	2022/10/20	
Back Side	4132/826.4	RMC12.2K	0.872	0.630	-0.13	22.21	22.50	0.932	2022/10/20	2#
Back Side Repeated	4132/826.4	RMC12.2K	0.868	0.625	1.20	22.21	22.50	0.928	2022/10/20	
Back Side	4233/846.6	RMC12.2K	0.844	0.604	-0.18	22.26	22.50	0.892	2022/10/20	

NOTE: Hotspot SAR test results of WCDMA Band 5

9.1.3. SAR measurement Result of LTE Band 2

Test Position of Hotspot with 10mm	Test channel /Freq.	Mode	SAR Value (W/kg)		Power Drift(%)	Conducted Power (dBm)	Tune-up Power (dBm)	Scaled SAR 1-g (W/Kg)	Date	Plot
			1-g	10-g						
1RB										
Front Side	18900/1880	20M QPSK(1,99)	0.500	0.263	3.33	22.28	23.00	0.590	2022/10/08	
Back Side	18900/1880	20M QPSK(1,99)	0.969	0.514	0.55	22.28	23.00	1.144	2022/10/08	
Right Side	18900/1880	20M QPSK(1,99)	0.441	0.227	3.84	22.28	23.00	0.521	2022/10/08	
Top Side	18900/1880	20M QPSK(1,99)	0.297	0.158	1.13	22.28	23.00	0.351	2022/10/08	
Bottom Side	18900/1880	20M QPSK(1,99)	0.301	0.155	3.83	22.28	23.00	0.355	2022/10/08	
Back Side	18700/1860	20M QPSK(1,99)	1.081	0.578	0.22	22.53	23.00	1.205	2022/10/08	4#
Back Side Repeated	18700/1860	20M QPSK(1,99)	1.070	0.569	1.20	22.53	23.00	1.192	2022/10/08	
Back Side	19100/1900	20M QPSK(1,99)	0.877	0.468	-1.19	22.43	23.00	1.000	2022/10/08	
50%RB										
Front Side	18900/1880	20M QPSK(50,49)	0.272	0.146	1.83	21.56	22.00	0.301	2022/10/08	
Back Side	18900/1880	20M QPSK(50,49)	0.499	0.264	-0.48	21.56	22.00	0.552	2022/10/08	
Right Side	18900/1880	20M QPSK(50,49)	0.226	0.123	-1.26	21.56	22.00	0.250	2022/10/08	
Top Side	18900/1880	20M QPSK(50,49)	0.150	0.088	1.14	21.56	22.00	0.166	2022/10/08	
Bottom Side	18900/1880	20M QPSK(50,49)	0.152	0.089	-4.35	21.56	22.00	0.168	2022/10/08	
100%RB										
Back Side	18900/1880	20M QPSK(100,0)	0.450	0.246	1.35	21.52	22.00	0.503	2022/10/08	

NOTE: Hotspot SAR test results of LTE Band 2

9.1.4. SAR measurement Result of LTE Band 4

Test Position of Hotspot with 10mm	Test channel /Freq.	Mode	SAR Value (W/kg)		Power Drift(%)	Conducted Power (dBm)	Tune-up Power (dBm)	Scaled SAR 1-g (W/Kg)	Date	Plot
			1-g	10-g						
1RB										
Front Side	20175/1732.5	20M QPSK(1,99)	0.365	0.220	0.10	22.85	23.00	0.378	2022/10/14	
Back Side	20175/1732.5	20M QPSK(1,99)	0.686	0.414	0.85	22.85	23.00	0.710	2022/10/14	5#
Right Side	20175/1732.5	20M QPSK(1,99)	0.324	0.188	-3.71	22.85	23.00	0.335	2022/10/14	
Top Side	20175/1732.5	20M QPSK(1,99)	0.210	0.122	1.91	22.85	23.00	0.217	2022/10/14	
Bottom Side	20175/1732.5	20M QPSK(1,99)	0.214	0.129	1.48	22.85	23.00	0.222	2022/10/14	
50%RB										
Front Side	20175/1732.5	20M QPSK(50,49)	0.209	0.117	2.00	21.52	22.00	0.233	2022/10/14	
Back Side	20175/1732.5	20M QPSK(50,49)	0.382	0.215	0.92	21.52	22.00	0.427	2022/10/14	
Right Side	20175/1732.5	20M QPSK(50,49)	0.189	0.098	2.72	21.52	22.00	0.211	2022/10/14	
Top Side	20175/1732.5	20M QPSK(50,49)	0.108	0.068	2.46	21.52	22.00	0.121	2022/10/14	
Bottom Side	20175/1732.5	20M QPSK(50,49)	0.107	0.072	-0.47	21.52	22.00	0.120	2022/10/14	

NOTE: Hotspot SAR test results of LTE Band 4

9.1.5. SAR measurement Result of LTE Band 5

Test Position of Hotspot with 10mm	Test channel /Freq.	Mode	SAR Value (W/kg)		Power Drift(%)	Conducted Power (dBm)	Tune-up Power (dBm)	Scaled SAR 1-g (W/Kg)	Date	Plot
			1-g	10-g						
1RB										
Front Side	20525/836.5	10M	0.495	0.341	3.32	22.54	23.00	0.550	2022/10/20	

		QPSK(1,0)								
Back Side	20525/836.5	10M QPSK(1,0)	0.965	0.693	-0.32	22.54	23.00	1.073	2022/10/20	
Right Side	20525/836.5	10M QPSK(1,0)	0.437	0.298	1.06	22.54	23.00	0.486	2022/10/20	
Top Side	20525/836.5	10M QPSK(1,0)	0.300	0.207	3.95	22.54	23.00	0.334	2022/10/20	
Bottom Side	20525/836.5	10M QPSK(1,0)	0.307	0.214	2.07	22.54	23.00	0.341	2022/10/20	
Back Side	20450/829	10M QPSK(1,0)	0.981	0.706	-0.63	22.57	23.00	1.083	2022/10/20	6#
Back Side Repeated	20450/829	10M QPSK(1,0)	0.976	0.687	1.20	22.57	23.00	1.078	2022/10/20	
Back Side	20600/844	10M QPSK(1,0)	0.934	0.677	1.33	22.89	23.00	0.958	2022/10/20	
50%RB										
Front Side	20525/836.5	10M QPSK(25,24)	0.280	0.173	4.08	21.72	22.00	0.299	2022/10/20	
Back Side	20525/836.5	10M QPSK(25,24)	0.554	0.406	3.14	21.72	22.00	0.591	2022/10/20	
Right Side	20525/836.5	10M QPSK(25,24)	0.237	0.177	-3.12	21.72	22.00	0.253	2022/10/20	
Top Side	20525/836.5	10M QPSK(25,24)	0.162	0.121	1.07	21.72	22.00	0.173	2022/10/20	
Bottom Side	20525/836.5	10M QPSK(25,24)	0.181	0.120	-0.41	21.72	22.00	0.193	2022/10/20	
100%RB										
Back Side	20525/836.5	10M QPSK(50,0)	0.540	0.367	1.25	21.64	22.00	0.587	2022/10/20	

NOTE: Hotspot SAR test results of LTE Band 5

9.1.6. SAR measurement Result of LTE Band 7

Test Position of Hotspot with 10mm	Test channel /Freq.	Mode	SAR Value (W/kg)		Power Drift(%)	Conducted Power (dBm)	Tune-up Power (dBm)	Scaled SAR 1-g (W/Kg)	Date	Plot
			1-g	10-g						
1RB										
Front Side	21100/2535	20M QPSK(1,49)	0.520	0.241	-3.51	22.62	23.00	0.568	2022/10/17	
Back Side	21100/2535	20M	0.997	0.477	0.32	22.62	23.00	1.088	2022/10/17	

		QPSK(1,49)								
Right Side	21100/2535	20M QPSK(1,49)	0.455	0.211	-3.78	22.62	23.00	0.497	2022/10/17	
Top Side	21100/2535	20M QPSK(1,49)	0.306	0.146	2.29	22.62	23.00	0.334	2022/10/17	
Bottom Side	21100/2535	20M QPSK(1,49)	0.322	0.153	-0.28	22.62	23.00	0.351	2022/10/17	
Back Side	20850/2510	20M QPSK(1,49)	0.966	0.461	-0.95	22.51	23.00	1.081	2022/10/17	
Back Side	21350/2560	20M QPSK(1,49)	1.240	0.581	-2.37	22.57	23.00	1.369	2022/10/17	7#
Back Side Repeated	21350/2560	20M QPSK(1,49)	1.232	0.575	1.35	22.57	23.00	1.360	2022/10/17	
50%RB										
Front Side	21100/2535	20M QPSK(50,49)	0.308	0.124	4.82	21.58	22.00	0.339	2022/10/17	
Back Side	21100/2535	20M QPSK(50,49)	0.554	0.251	-3.62	21.58	22.00	0.610	2022/10/17	
Right Side	21100/2535	20M QPSK(50,49)	0.266	0.113	-4.77	21.58	22.00	0.293	2022/10/17	
Top Side	21100/2535	20M QPSK(50,49)	0.166	0.077	-4.31	21.58	22.00	0.183	2022/10/17	
Bottom Side	21100/2535	20M QPSK(50,49)	0.171	0.090	-3.69	21.58	22.00	0.188	2022/10/17	
100%RB										
Back Side	21100/2535	20M QPSK(100,0)	0.535	0.240	1.20	21.51	22.00	0.599	2022/10/17	

NOTE: Hotspot SAR test results of LTE Band 7

9.1.7. SAR measurement Result of LTE Band 17

Test Position of Hotspot with 10mm	Test channel /Freq.	Mode	SAR Value (W/kg)		Power Drift(%)	Conducted Power (dBm)	Tune-up Power (dBm)	Scaled SAR 1-g (W/Kg)	Date	Plot
			1-g	10-g						
1RB										
Front Side	23790/710	10M QPSK(1,49)	0.220	0.161	0.91	22.89	23.50	0.253	2022/10/09	
Back Side	23790/710	10M QPSK(1,49)	0.408	0.301	-1.14	22.89	23.50	0.470	2022/10/09	8#
Right Side	23790/710	10M	0.189	0.132	-2.42	22.89	23.50	0.218	2022/10/09	

		QPSK(1,49)								
Top Side	23790/710	10M QPSK(1,49)	0.135	0.097	3.46	22.89	23.50	0.155	2022/10/09	
Bottom Side	23790/710	10M QPSK(1,49)	0.136	0.099	0.55	22.89	23.50	0.157	2022/10/09	
50%RB										
Front Side	23790/710	10M QPSK(25,24)	0.118	0.093	-0.41	21.82	22.00	0.123	2022/10/09	
Back Side	23790/710	10M QPSK(25,24)	0.235	0.175	-2.41	21.82	22.00	0.245	2022/10/09	
Right Side	23790/710	10M QPSK(25,24)	0.104	0.076	3.53	21.82	22.00	0.108	2022/10/09	
Top Side	23790/710	10M QPSK(25,24)	0.079	0.051	2.16	21.82	22.00	0.082	2022/10/09	
Bottom Side	23790/710	10M QPSK(25,24)	0.080	0.058	-3.52	21.82	22.00	0.083	2022/10/09	

NOTE: Hotspot SAR test results of LTE Band 17

9.1.8. SAR measurement Result of WLAN 2.4G

Test Position of Hotspot with 10mm	Test channel /Freq	Mode	SAR Value (W/kg)		Power Drift(%)	Conducted Power (dBm)	Tune-up Power (dBm)	Scaled SAR 1-g (W/Kg)	Date	Plot
			1-g	10-g						
Front Side	11/2462	802.11b	0.165	0.080	0.79	15.36	15.50	0.170	2022/10/18	
Back Side	11/2462	802.11b	0.206	0.107	1.25	15.36	15.50	0.213	2022/10/18	3#
Left Side	11/2462	802.11b	0.140	0.070	0.26	15.36	15.50	0.145	2022/10/18	
Top Side	11/2462	802.11b	0.099	0.048	0.34	15.36	15.50	0.102	2022/10/18	
Bottom Side	11/2462	802.11b	0.093	0.045	-0.97	15.36	15.50	0.096	2022/10/18	

NOTE: Hotspot SAR test results of WLAN 2.4G

9.2. Simultaneous Transmission Analysis

Per KDB 447498 D01, simultaneous transmission SAR is compliant if,

- 1) Scalar SAR summation < 1.6W/kg.
- 2) $SPLSR = (SAR_1 + SAR_2)^{1.5} / (\text{min. separation distance, mm})$, and the peak separation distance is determined from the square root of $[(x_1-x_2)^2 + (y_1-y_2)^2 + (z_1-z_2)^2]$, where (x_1, y_1, z_1) and (x_2, y_2, z_2) are the coordinates of the extrapolated peak SAR locations in the zoom scan. If $SPLSR \leq 0.04$, simultaneously transmission SAR measurement is not necessary.

Test Position	Scaled SAR _{MAX}		Σ 1-g SAR (W/Kg)	SPLSR	Remark
	WWAN	DTS			

Hotspot	Front Side	0.590	0.170	0.760	N/A	N/A
	Back Side	1.369	0.213	1.582	N/A	N/A
	Left Side	N/A	0.145	0.145	N/A	N/A
	Right Side	0.521	N/A	0.521	N/A	N/A
	Top Side	0.351	0.102	0.453	N/A	N/A
	Bottom Side	0.355	0.096	0.451	N/A	N/A

10. Appendix A. Photo documentation

Refer to appendix Test Setup photo---SAR

11. Appendix B. System Check Plots

Table of contents
MEASUREMENT 1 System Performance Check - 750MHz
MEASUREMENT 2 System Performance Check - 835MHz
MEASUREMENT 3 System Performance Check - 1800MHz
MEASUREMENT 4 System Performance Check - 1900MHz
MEASUREMENT 5 System Performance Check - 2450MHz
MEASUREMENT 6 System Performance Check - 2600MHz

MEASUREMENT 1

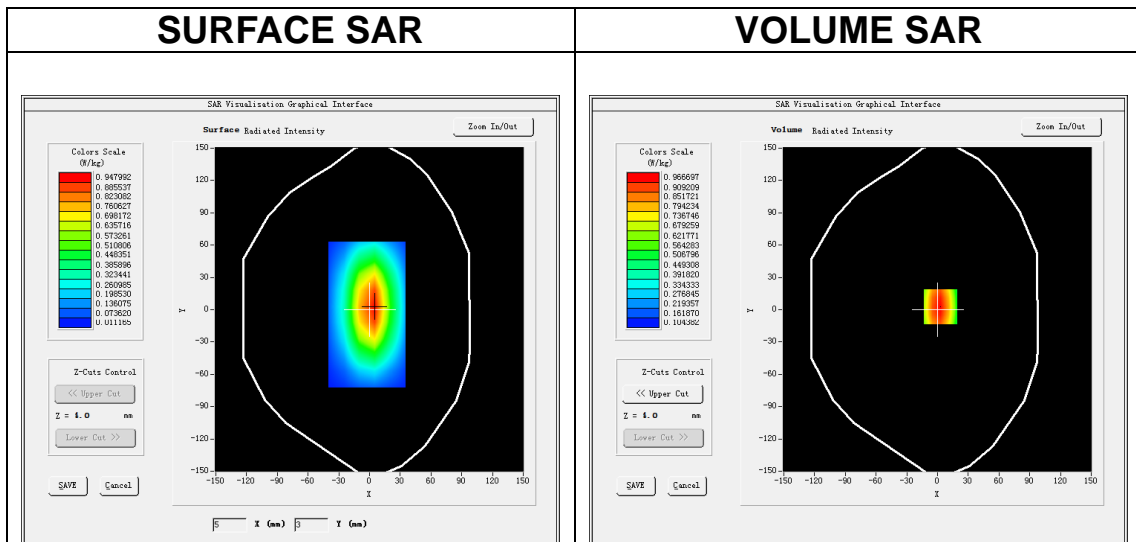
Date of measurement: 9/10/2022

A. Experimental conditions.

Area Scan	<u>dx=15mm dy=15mm, h= 5.00 mm</u>
ZoomScan	<u>5x5x7,dx=8mm dy=8mm dz=5mm</u>
Phantom	<u>Validation plane</u>
Device Position	<u>Dipole</u>
Band	<u>CW750</u>
Channels	<u>Middle</u>
Signal	<u>CW (Crest factor: 1.0)</u>
ConvF	<u>1.49</u>

B. SAR Measurement Results

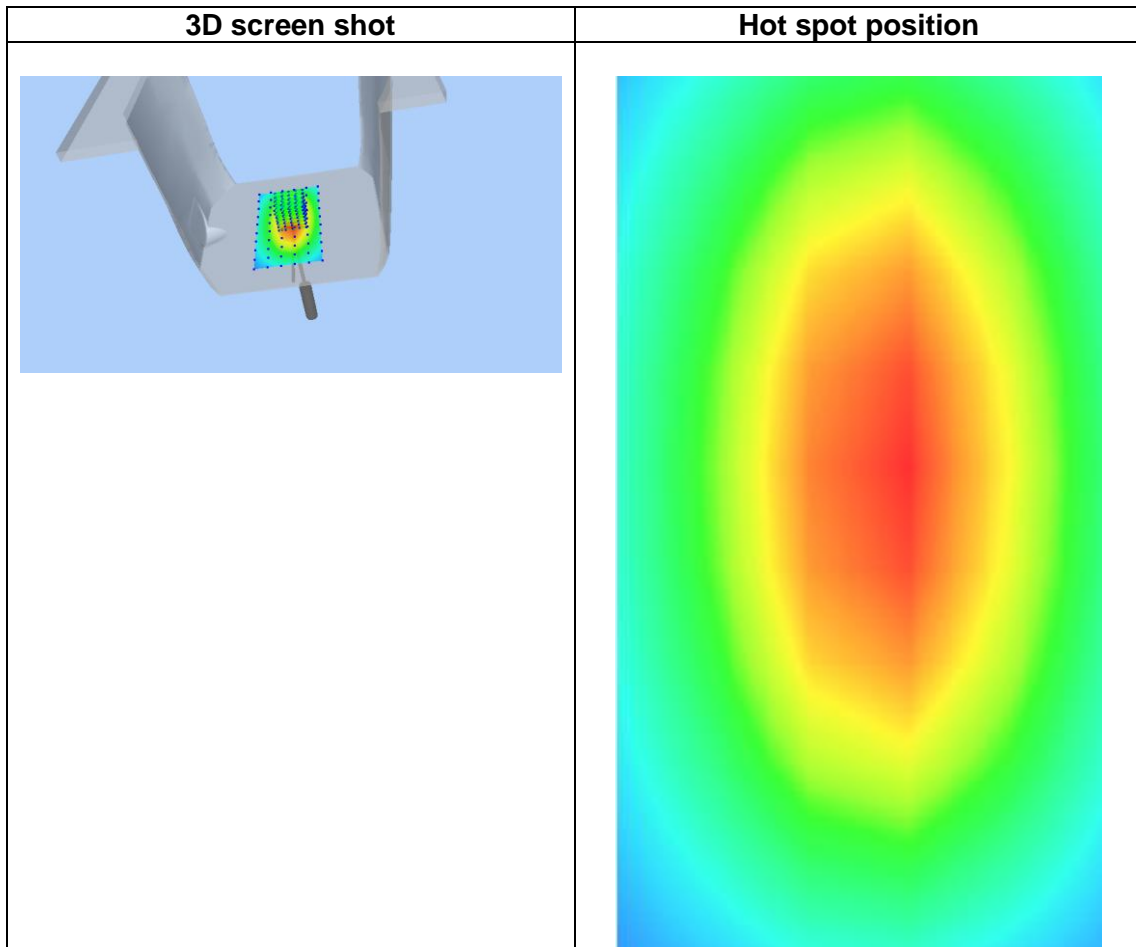
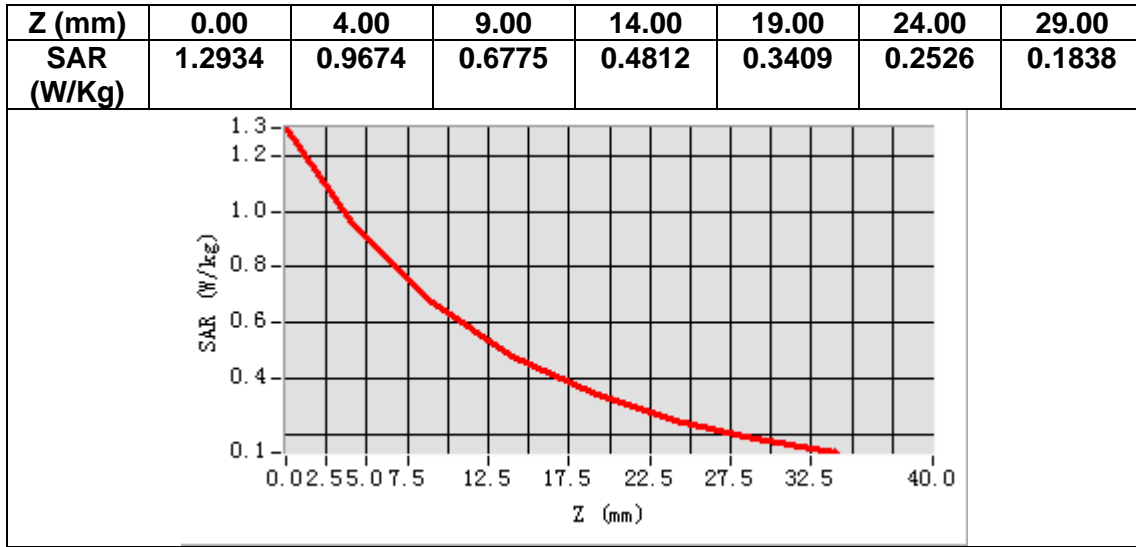
Frequency (MHz)	750.000000
Relative permittivity (real part)	40.218602
Relative permittivity (imaginary part)	21.274440
Conductivity (S/m)	0.886435
Variation (%)	2.170000



Maximum location: X=3.00, Y=3.00

SAR Peak: 1.30 W/kg

SAR 10g (W/Kg)	0.527171
SAR 1g (W/Kg)	0.849104



MEASUREMENT 2

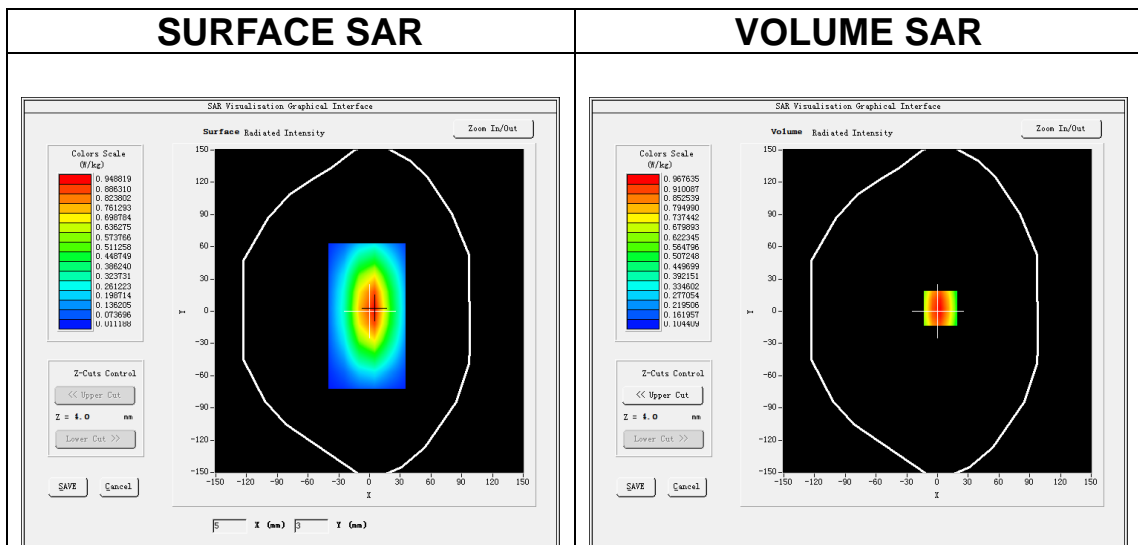
Date of measurement: 20/10/2022

A. Experimental conditions.

Area Scan	<u>dx=15mm dy=15mm, h= 5.00 mm</u>
ZoomScan	<u>5x5x7, dx=8mm dy=8mm dz=5mm</u>
Phantom	<u>Validation plane</u>
Device Position	<u>Dipole</u>
Band	<u>CW835</u>
Channels	<u>Middle</u>
Signal	<u>CW (Crest factor: 1.0)</u>
ConvF	<u>1.50</u>

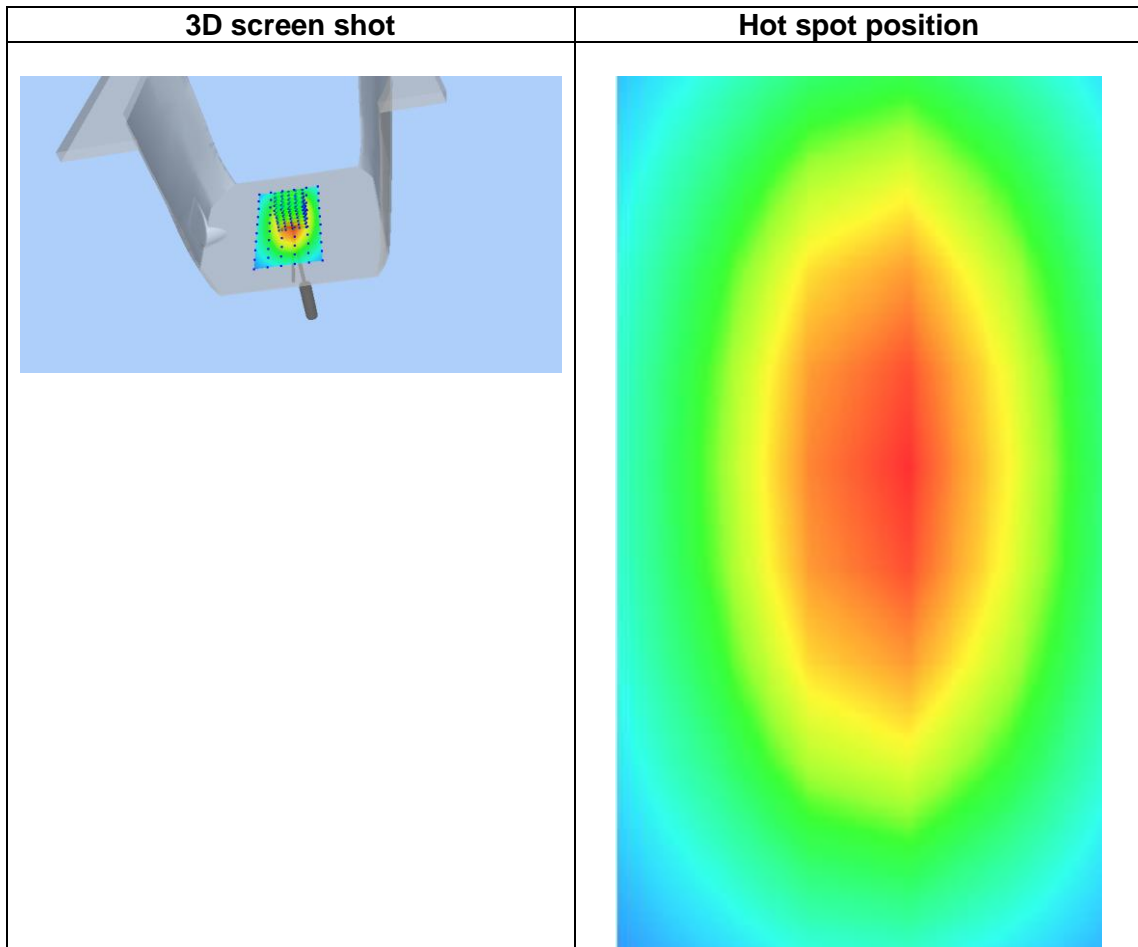
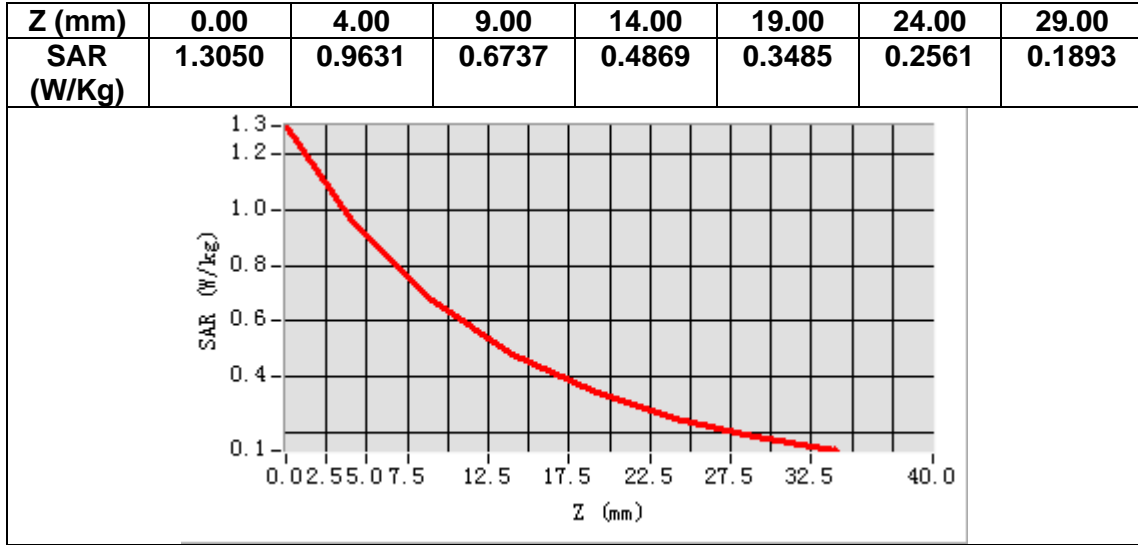
B. SAR Measurement Results

Frequency (MHz)	835.000000
Relative permittivity (real part)	41.250045
Relative permittivity (imaginary part)	19.800331
Conductivity (S/m)	0.918515
Variation (%)	-0.380000



Maximum location: X=3.00, Y=3.00
SAR Peak: 1.30 W/kg

SAR 10g (W/Kg)	0.588257
SAR 1g (W/Kg)	1.001267



MEASUREMENT 3

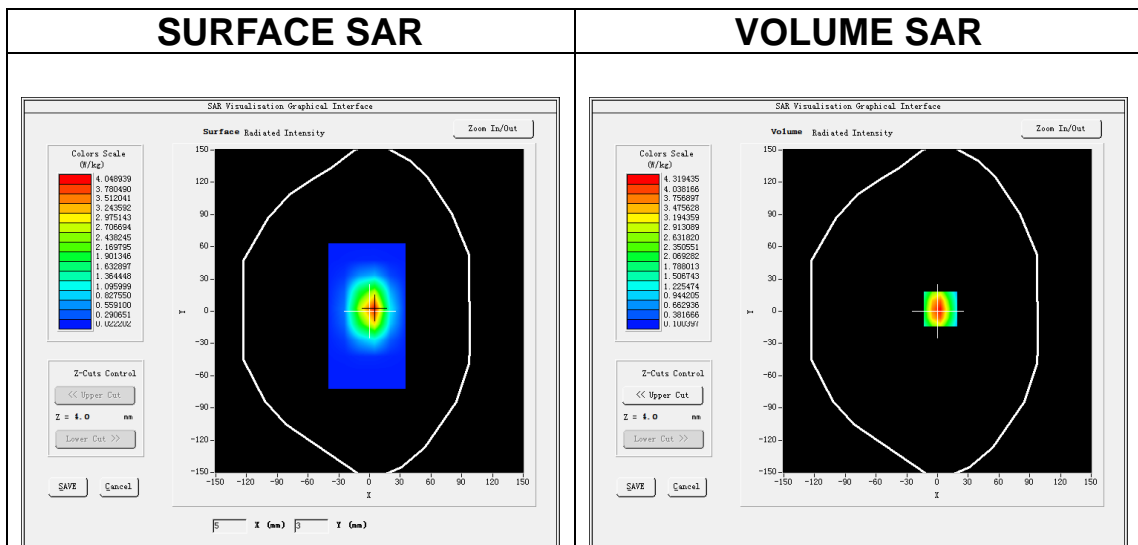
Date of measurement: 14/10/2022

A. Experimental conditions.

Area Scan	<u>dx=15mm dy=15mm, h= 5.00 mm</u>
ZoomScan	<u>5x5x7, dx=8mm dy=8mm dz=5mm</u>
Phantom	<u>Validation plane</u>
Device Position	<u>Dipole</u>
Band	<u>CW1800</u>
Channels	<u>Middle</u>
Signal	<u>CW (Crest factor: 1.0)</u>
ConvF	<u>1.73</u>

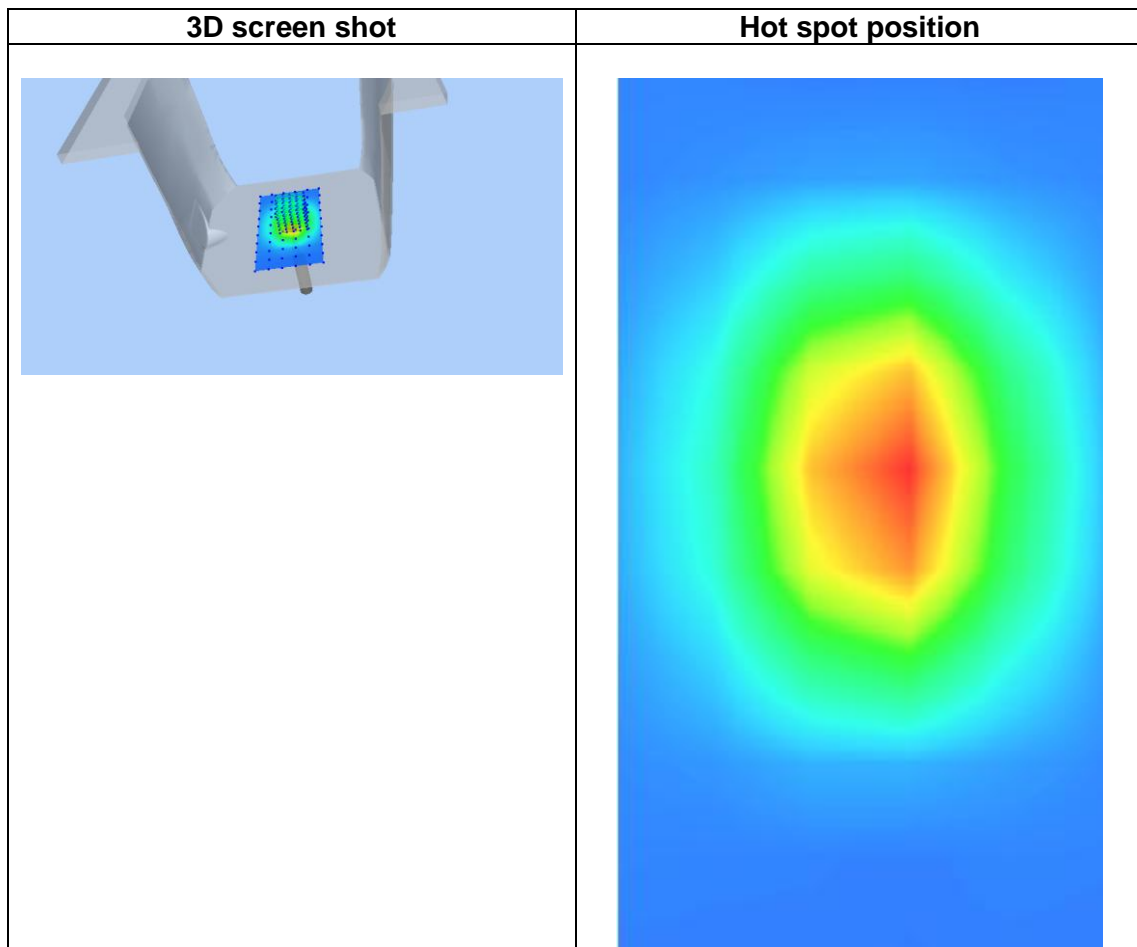
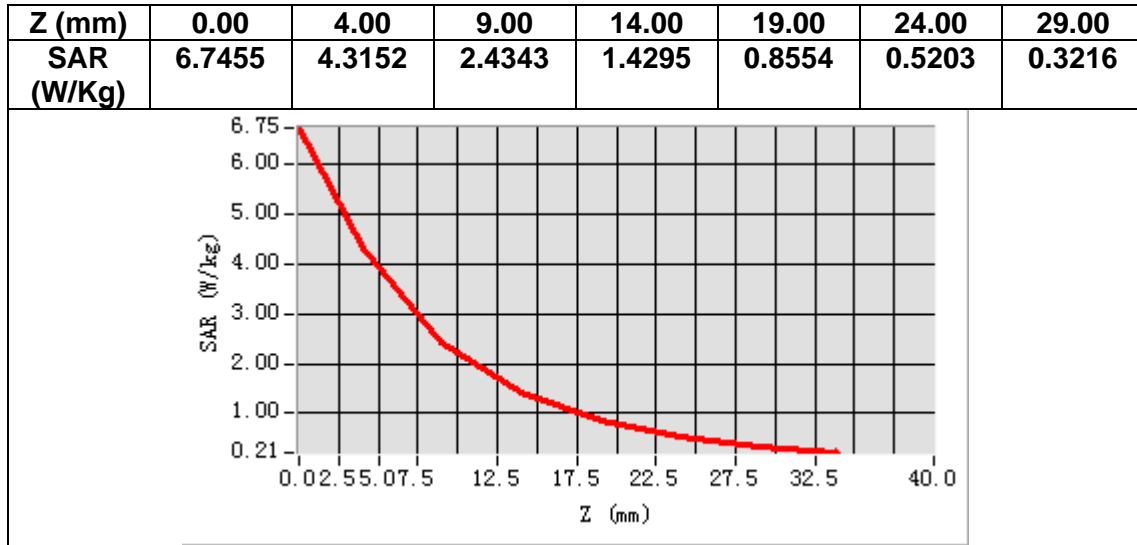
B. SAR Measurement Results

Frequency (MHz)	1800.000000
Relative permittivity (real part)	38.573940
Relative permittivity (imaginary part)	13.717373
Conductivity (S/m)	1.371737
Variation (%)	-1.940000



Maximum location: X=3.00, Y=2.00
SAR Peak: 6.82 W/kg

SAR 10g (W/Kg)	1.961013
SAR 1g (W/Kg)	3.831067



MEASUREMENT 4

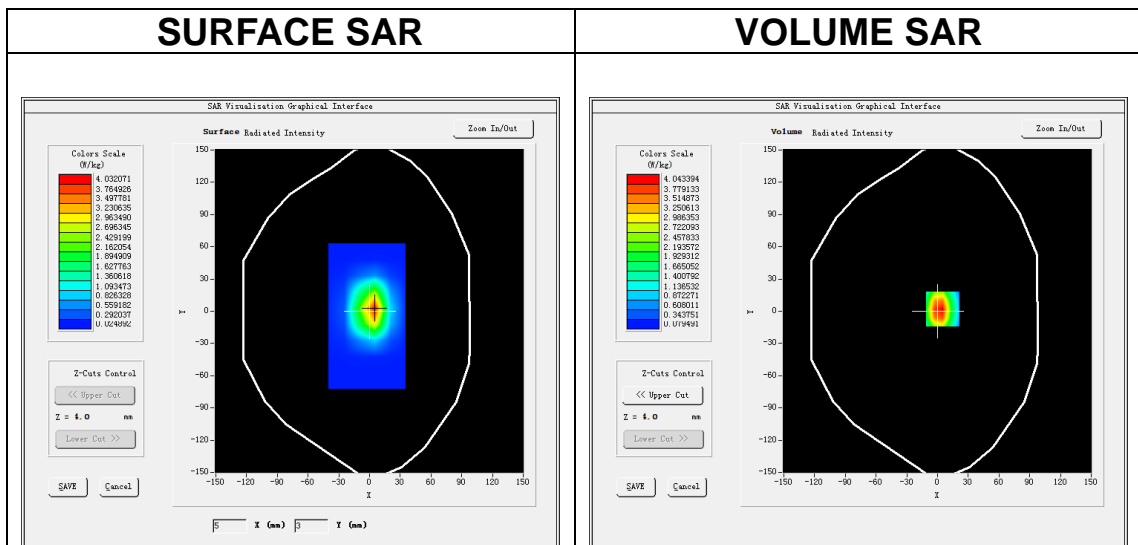
Date of measurement: 8/10/2022

A. Experimental conditions.

Area Scan	<u>dx=15mm dy=15mm, h= 5.00 mm</u>
ZoomScan	<u>5x5x7, dx=8mm dy=8mm dz=5mm</u>
Phantom	<u>Validation plane</u>
Device Position	<u>Dipole</u>
Band	<u>CW1900</u>
Channels	<u>Middle</u>
Signal	<u>CW (Crest factor: 1.0)</u>
ConvF	<u>1.91</u>

B. SAR Measurement Results

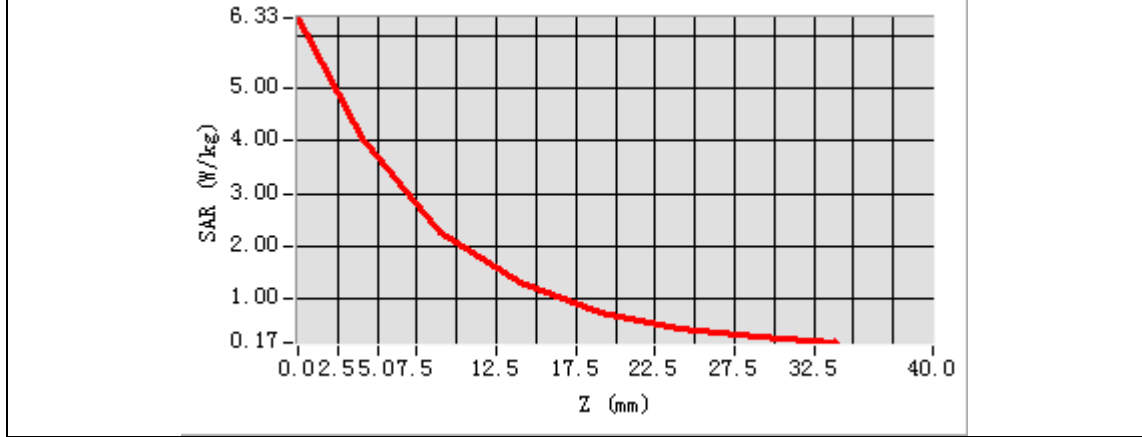
Frequency (MHz)	1900.000000
Relative permittivity (real part)	38.348065
Relative permittivity (imaginary part)	13.783294
Conductivity (S/m)	1.454903
Variation (%)	-0.480000

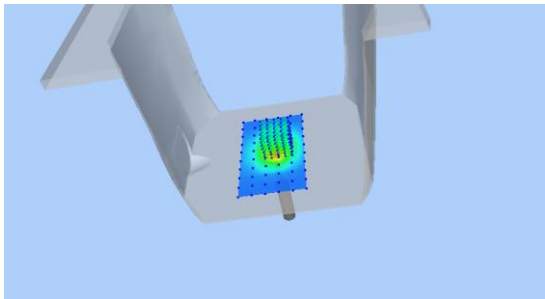
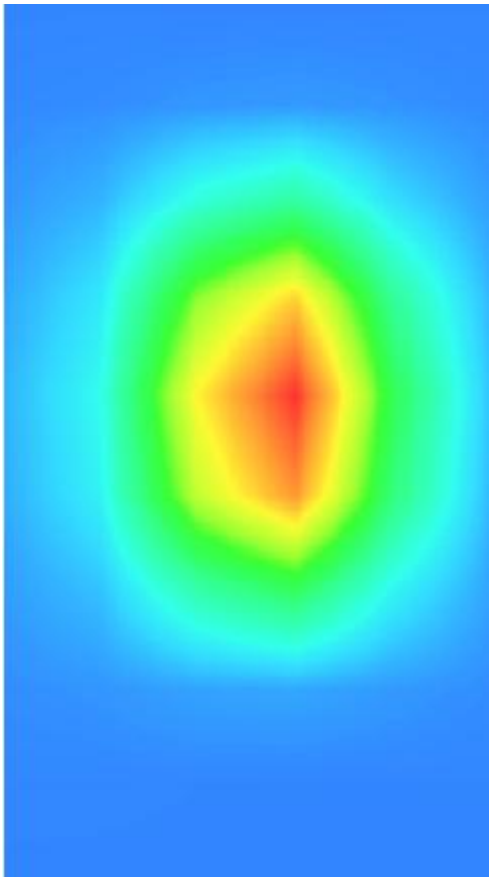


Maximum location: X=5.00, Y=2.00
SAR Peak: 6.70 W/kg

SAR 10g (W/Kg)	2.130344
SAR 1g (W/Kg)	3.740128

Z (mm)	0.00	4.00	9.00	14.00	19.00	24.00	29.00
SAR (W/Kg)	6.3243	4.0472	2.2608	1.3004	0.7677	0.4582	0.2748



3D screen shot	Hot spot position
	

MEASUREMENT 5

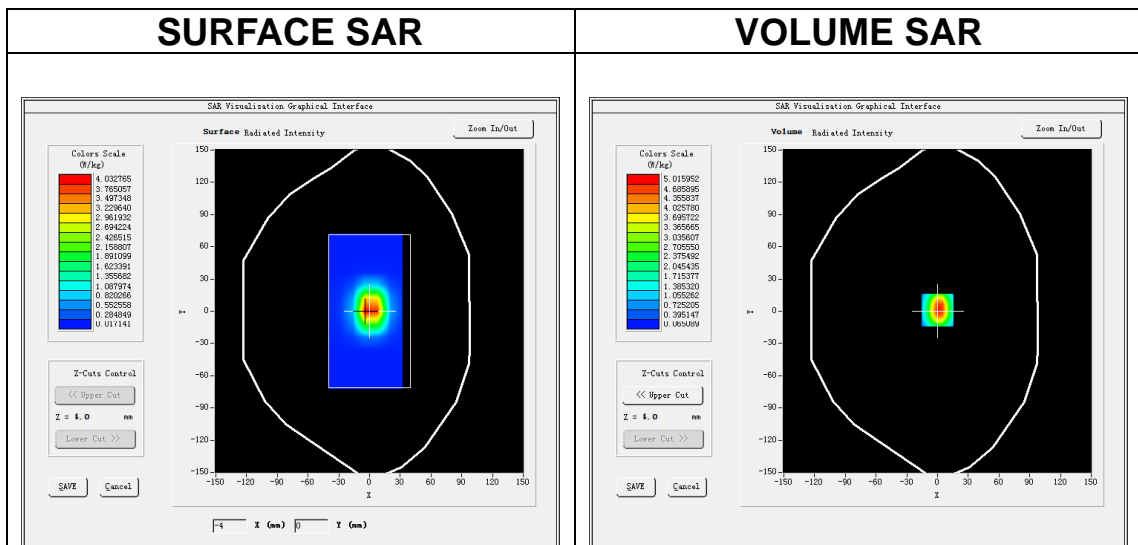
Date of measurement: 18/10/2022

A. Experimental conditions.

Area Scan	<u>dx=12mm dy=12mm, h= 5.00 mm</u>
ZoomScan	<u>7x7x7, dx=5mm dy=5mm dz=5mm</u>
Phantom	<u>Validation plane</u>
Device Position	<u>Dipole</u>
Band	<u>CW2450</u>
Channels	<u>Middle</u>
Signal	<u>CW (Crest factor: 1.0)</u>
ConvF	<u>1.98</u>

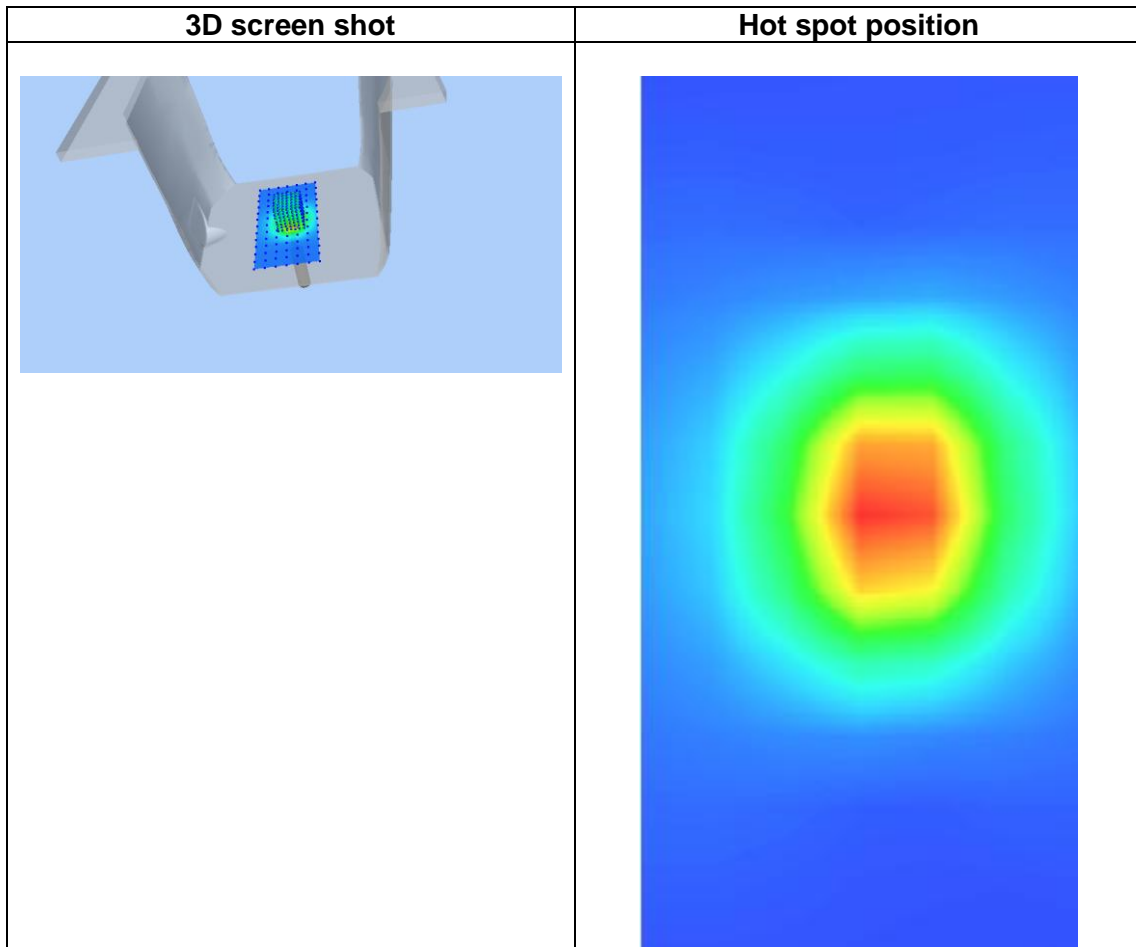
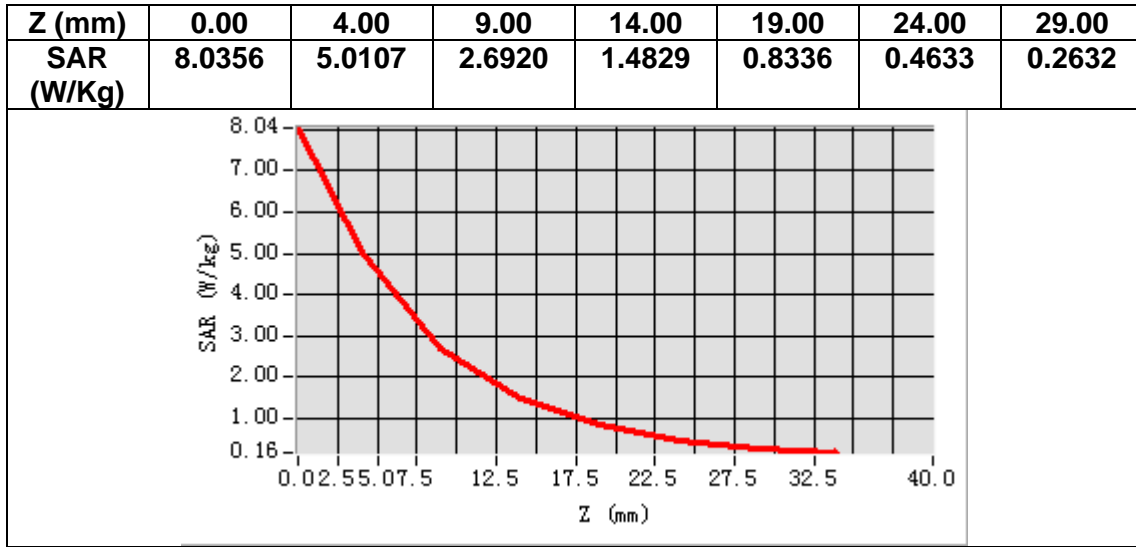
B. SAR Measurement Results

Frequency (MHz)	2450.000000
Relative permittivity (real part)	37.671208
Relative permittivity (imaginary part)	12.908427
Conductivity (S/m)	1.756980
Variation (%)	0.350000



Maximum location: X=0.00, Y=1.00
SAR Peak: 8.14 W/kg

SAR 10g (W/Kg)	2.484046
SAR 1g (W/Kg)	5.540065



MEASUREMENT 6

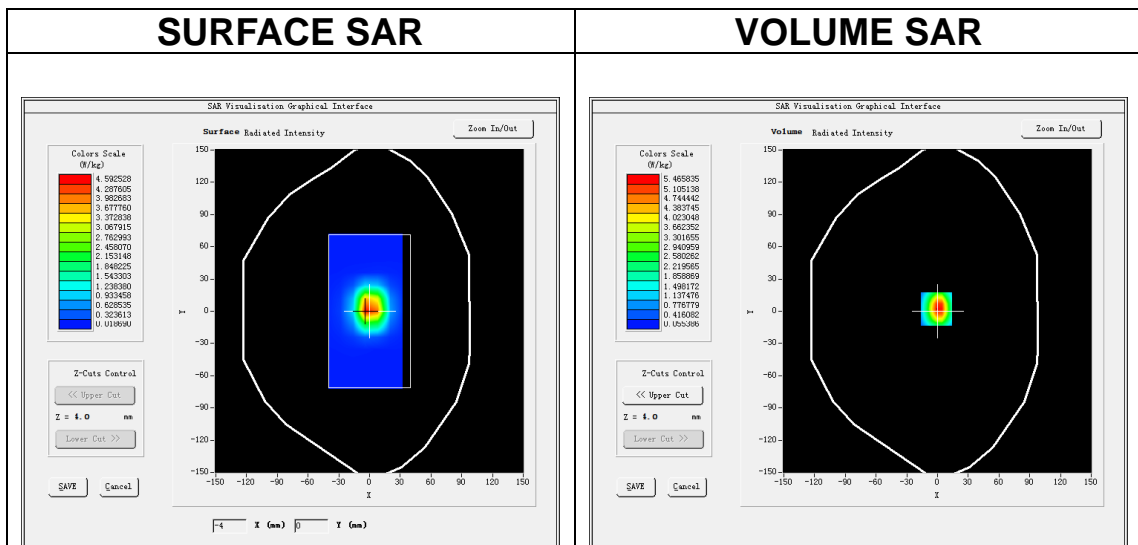
Date of measurement: 17/10/2022

A. Experimental conditions.

Area Scan	<u>dx=12mm dy=12mm, h= 5.00 mm</u>
ZoomScan	<u>7x7x7, dx=5mm dy=5mm dz=5mm</u>
Phantom	<u>Validation plane</u>
Device Position	<u>Dipole</u>
Band	<u>CW2600</u>
Channels	<u>Middle</u>
Signal	<u>CW (Crest factor: 1.0)</u>
ConvF	<u>1.87</u>

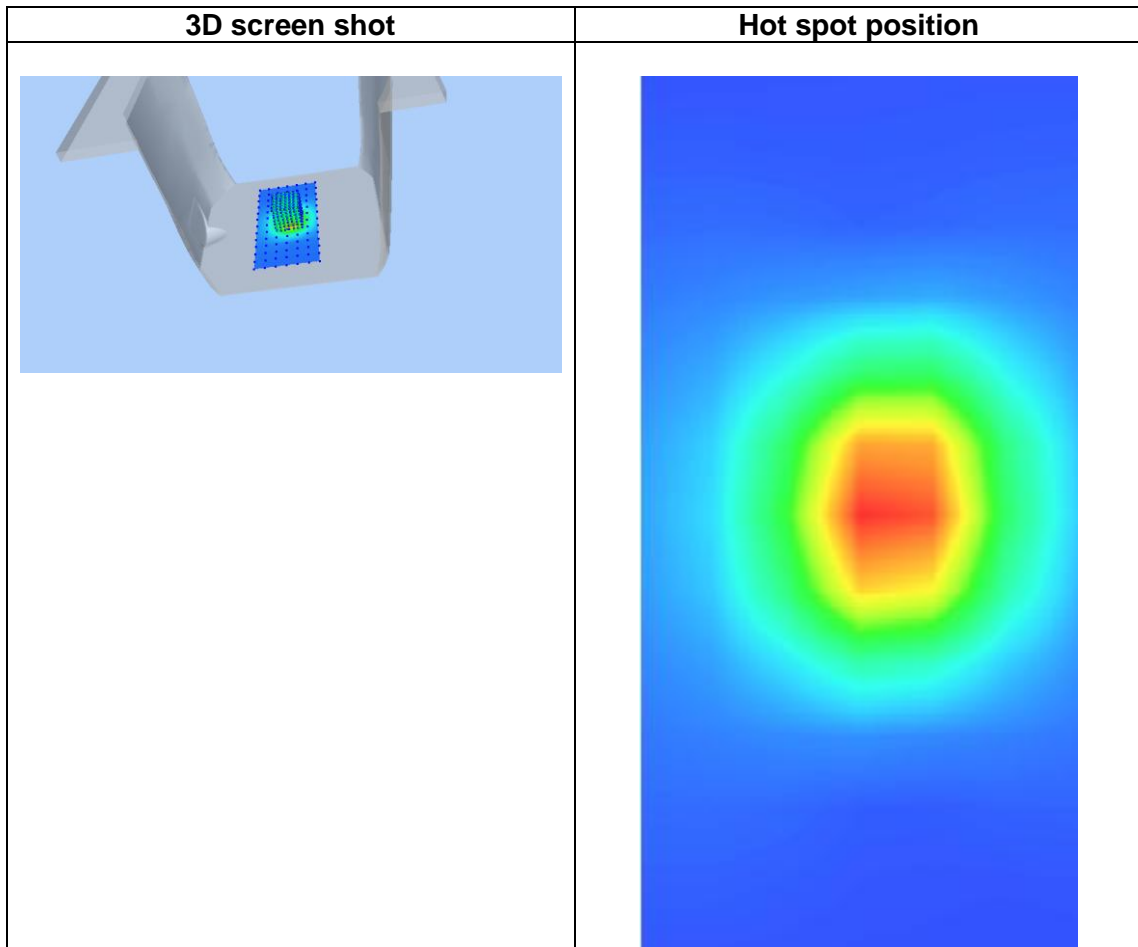
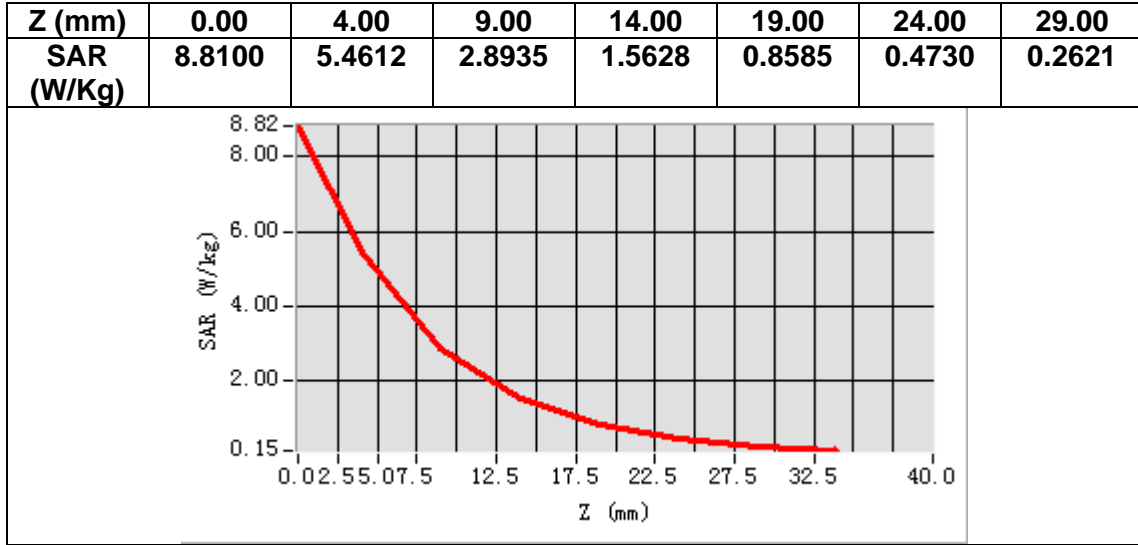
B. SAR Measurement Results

Frequency (MHz)	2600.000000
Relative permittivity (real part)	37.582730
Relative permittivity (imaginary part)	13.313127
Conductivity (S/m)	1.923007
Variation (%)	0.820000



Maximum location: X=-1.00, Y=2.00
SAR Peak: 9.07 W/kg

SAR 10g (W/Kg)	2.348293
SAR 1g (W/Kg)	6.030081



12. Appendix C. Plots of High SAR Measurement

Table of contents
MEASUREMENT 1 WCDMA Band 2 Body
MEASUREMENT 2 WCDMA Band 5 Body
MEASUREMENT 3 WLAN 2.4G Body
MEASUREMENT 4 LTE Band 2 Body
MEASUREMENT 5 LTE Band 4 Body
MEASUREMENT 6 LTE Band 5 Body
MEASUREMENT 7 LTE Band 7 Body
MEASUREMENT 8 LTE Band 17 Body

MEASUREMENT 1

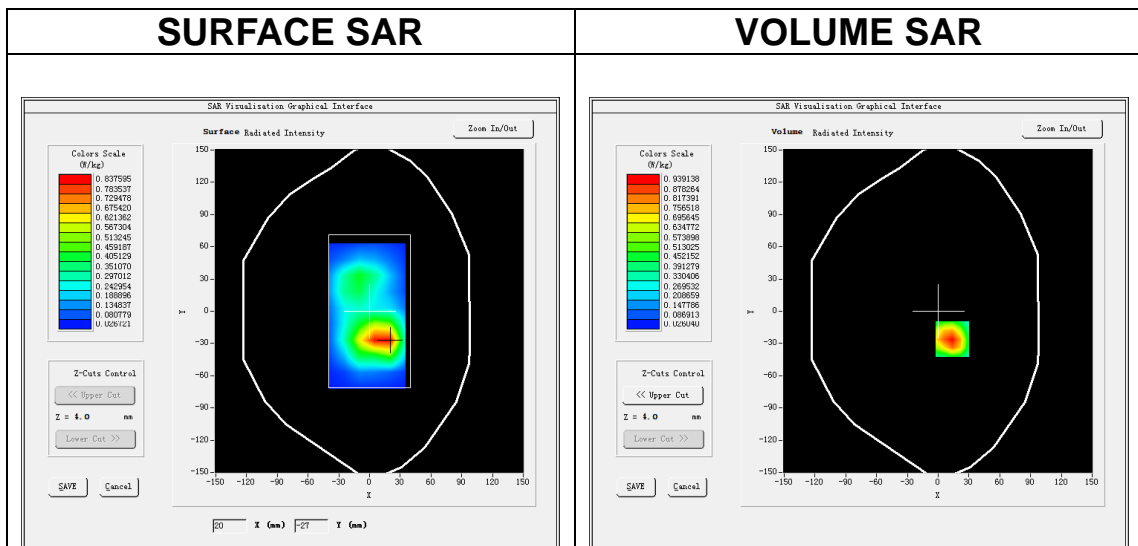
Date of measurement: 8/10/2022

A. Experimental conditions.

Area Scan	<u>dx=15mm dy=15mm, h= 5.00 mm</u>
ZoomScan	<u>5x5x7, dx=8mm dy=8mm dz=5mm</u>
Phantom	<u>Validation plane</u>
Device Position	<u>Body</u>
Band	<u>Band2 WCDMA1900</u>
Channels	<u>Low</u>
Signal	<u>WCDMA (Crest factor: 1.0)</u>
ConvF	<u>1.91</u>

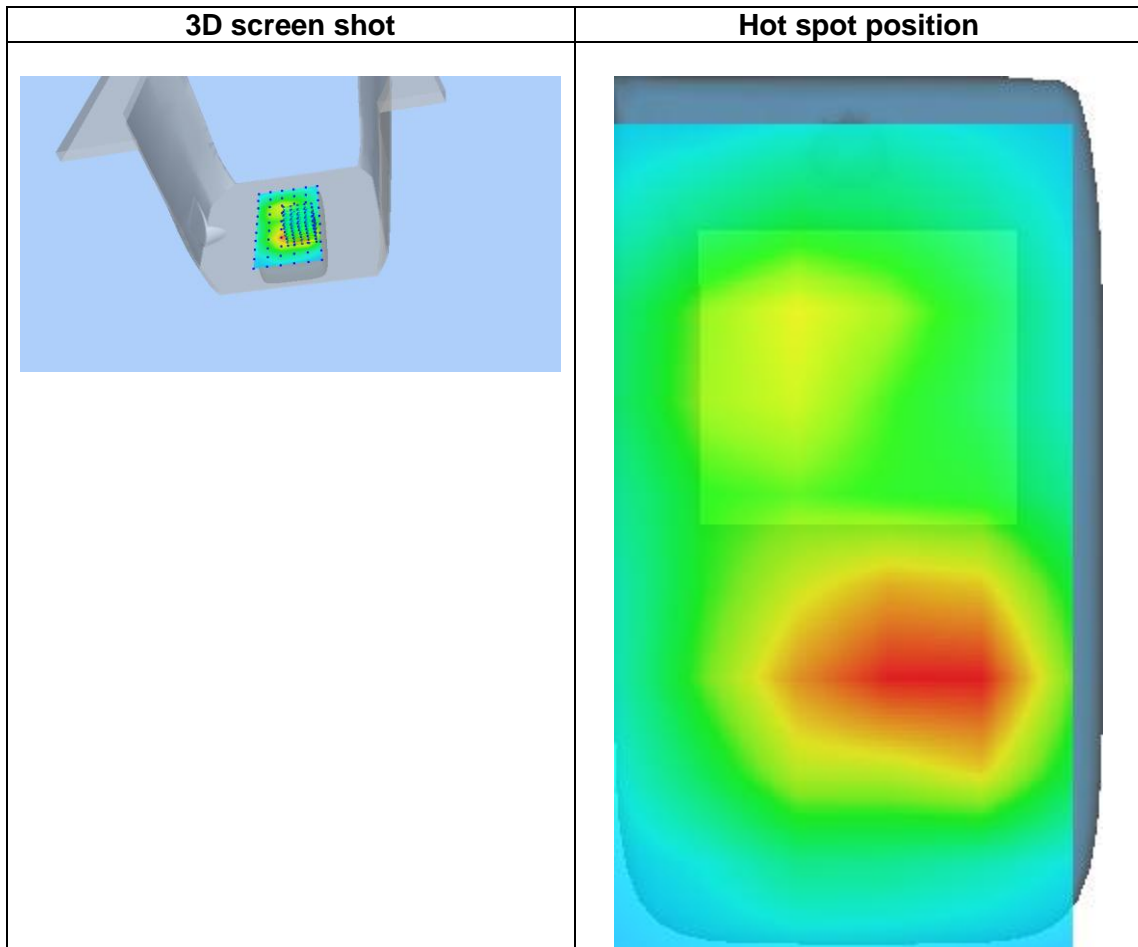
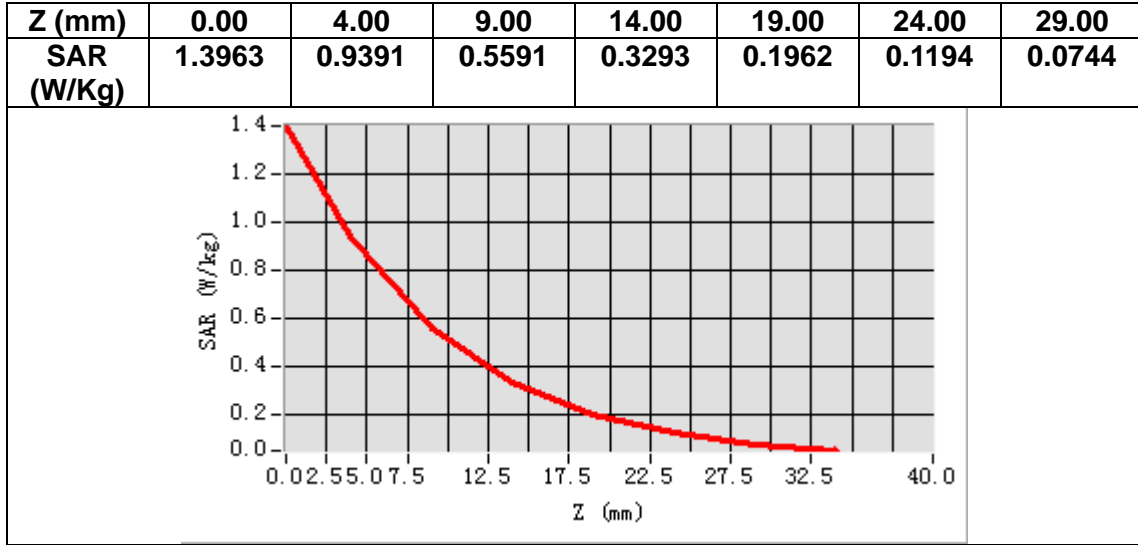
B. SAR Measurement Results

Frequency (MHz)	1852.400000
Relative permittivity (real part)	38.562344
Relative permittivity (imaginary part)	13.826774
Conductivity (S/m)	1.422929
Variation (%)	-1.950000



Maximum location: X=14.00, Y=-26.00
SAR Peak: 1.44 W/kg

SAR 10g (W/Kg)	0.491963
SAR 1g (W/Kg)	0.906053



MEASUREMENT 2

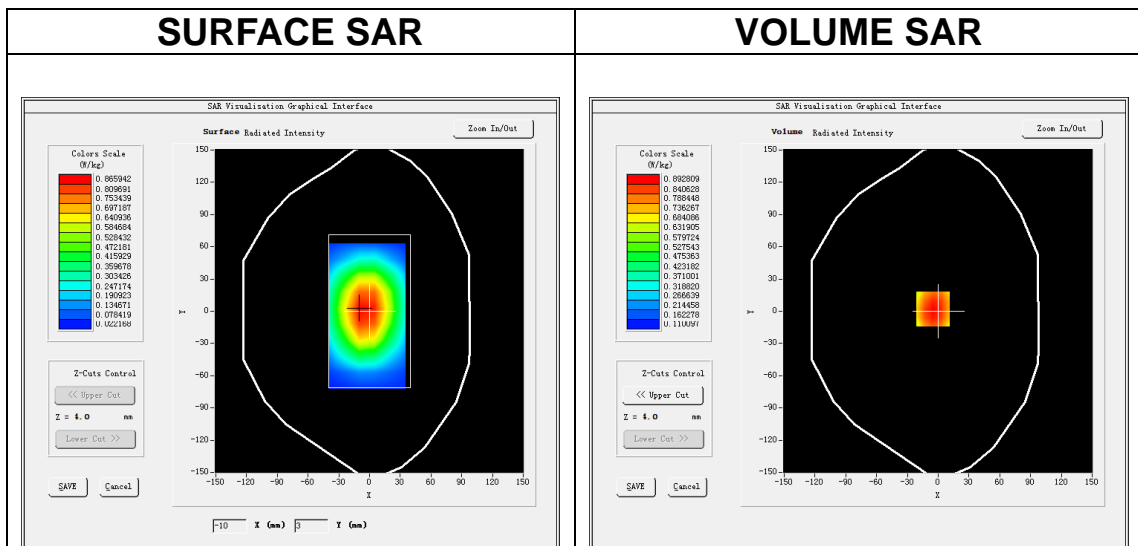
Date of measurement: 20/10/2022

A. Experimental conditions.

Area Scan	<u>dx=15mm dy=15mm, h= 5.00 mm</u>
ZoomScan	<u>5x5x7, dx=8mm dy=8mm dz=5mm</u>
Phantom	<u>Validation plane</u>
Device Position	<u>Body</u>
Band	<u>Band5_WCDMA850</u>
Channels	<u>Low</u>
Signal	<u>WCDMA (Crest factor: 1.0)</u>
ConvF	<u>1.50</u>

B. SAR Measurement Results

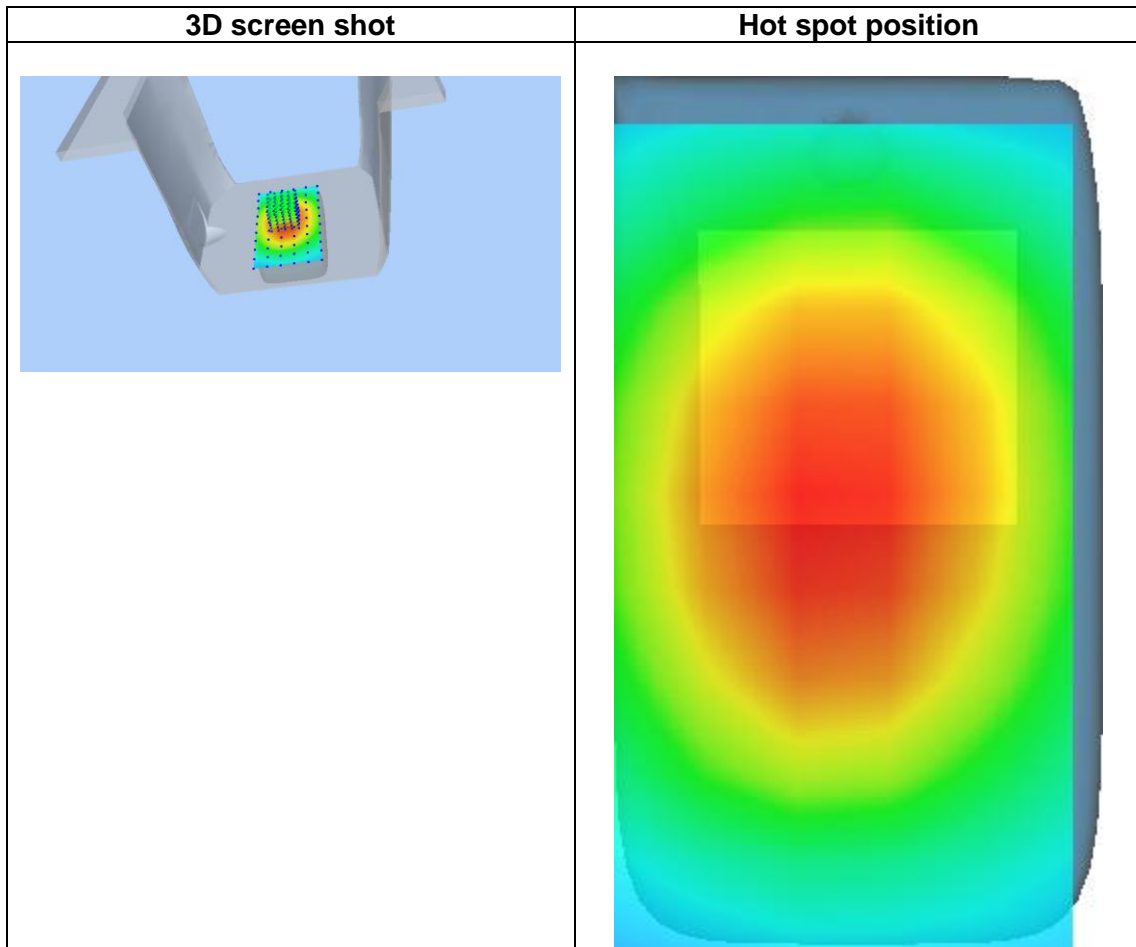
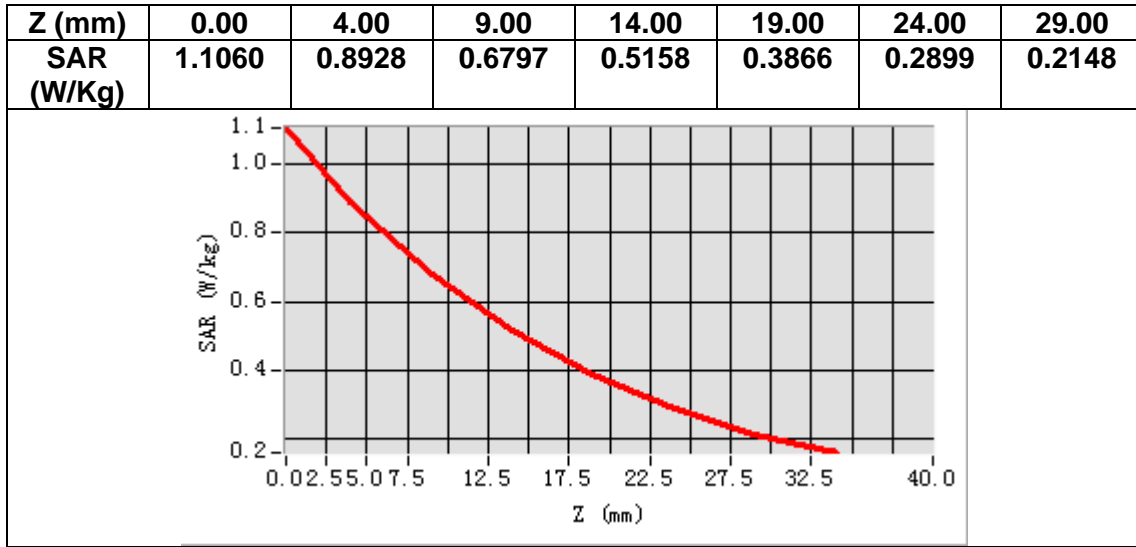
Frequency (MHz)	826.400000
Relative permittivity (real part)	41.343666
Relative permittivity (imaginary part)	19.823450
Conductivity (S/m)	0.910117
Variation (%)	-0.130000



Maximum location: X=-5.00, Y=2.00

SAR Peak: 1.11 W/kg

SAR 10g (W/Kg)	0.629548
SAR 1g (W/Kg)	0.872062



MEASUREMENT 3

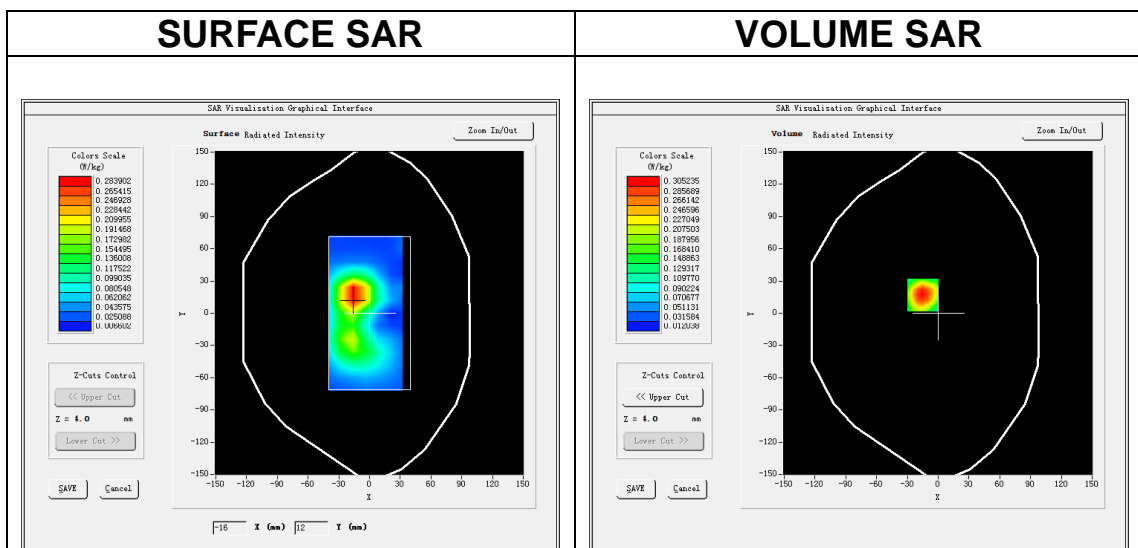
Date of measurement: 18/10/2022

A. Experimental conditions.

Area Scan	<u>dx=12mm dy=12mm, h= 5.00 mm</u>
ZoomScan	<u>7x7x7, dx=5mm dy=5mm dz=5mm</u>
Phantom	<u>Validation plane</u>
Device Position	<u>Body</u>
Band	<u>IEEE 802.11b ISM</u>
Channels	<u>High</u>
Signal	<u>IEEE802.11b (Crest factor: 1.0)</u>
ConvF	<u>1.98</u>

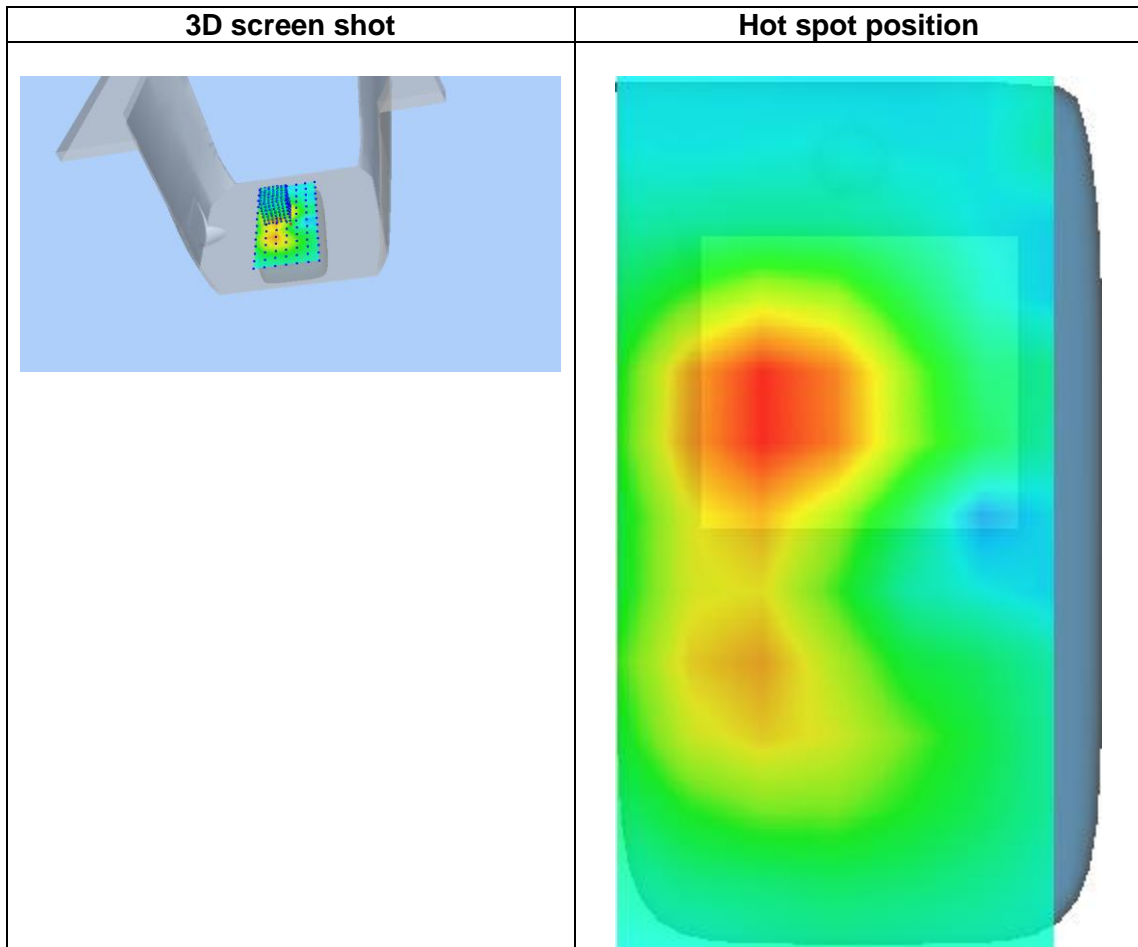
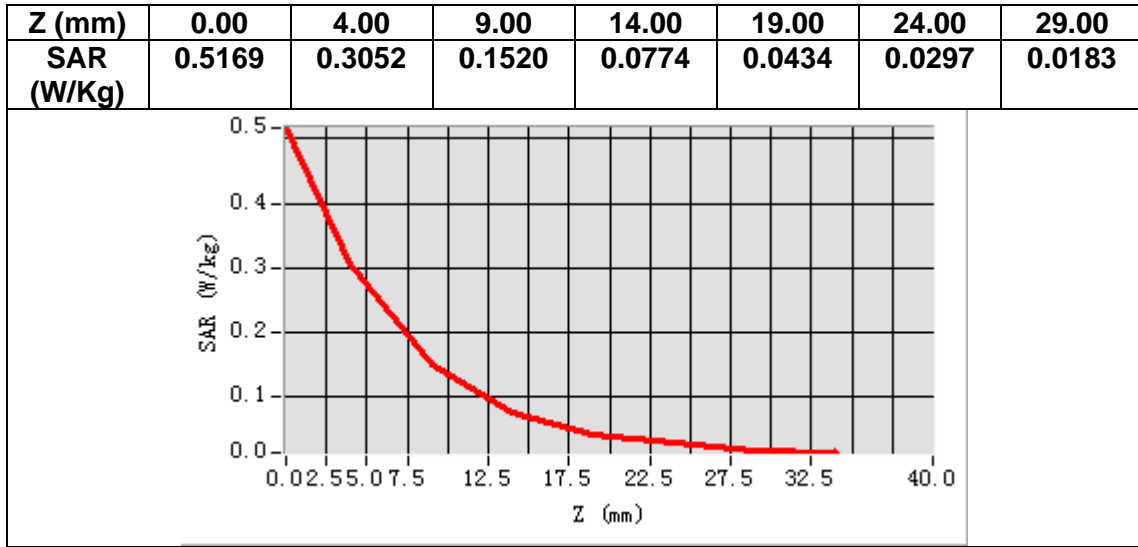
B. SAR Measurement Results

Frequency (MHz)	2462.000000
Relative permittivity (real part)	37.647208
Relative permittivity (imaginary part)	12.967727
Conductivity (S/m)	1.773697
Variation (%)	1.250000



Maximum location: X=-15.00, Y=17.00
SAR Peak: 0.52 W/kg

SAR 10g (W/Kg)	0.107475
SAR 1g (W/Kg)	0.206039



MEASUREMENT 4

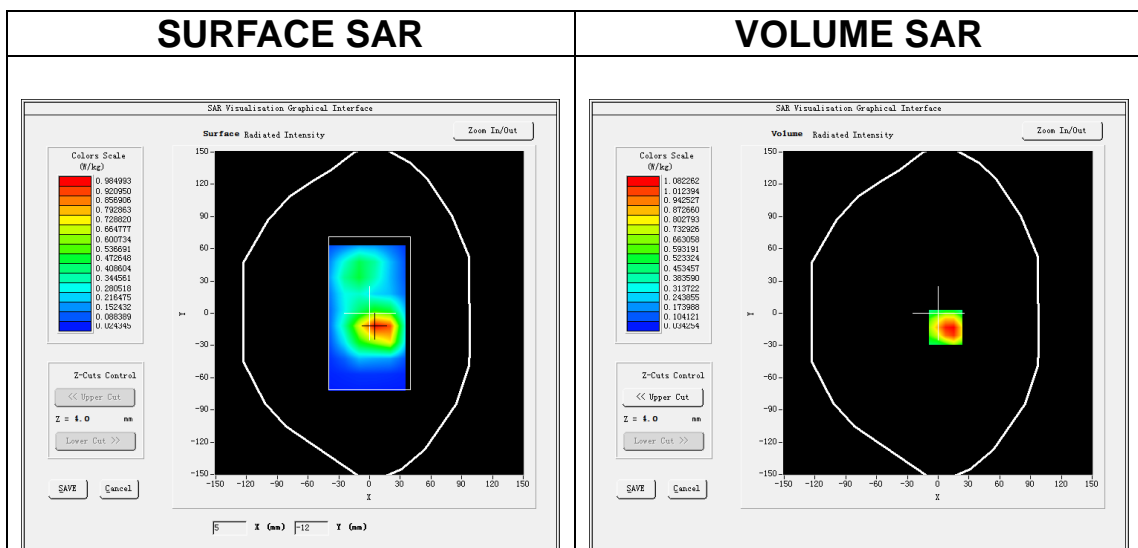
Date of measurement: 8/10/2022

A. Experimental conditions.

Area Scan	<u>dx=15mm dy=15mm, h= 5.00 mm</u>
ZoomScan	<u>5x5x7, dx=8mm dy=8mm dz=5mm</u>
Phantom	<u>Validation plane</u>
Device Position	<u>Body</u>
Band	<u>LTE band 2</u>
Channels	<u>Low</u>
Signal	<u>LTE (Crest factor: 1.0)</u>
ConvF	<u>1.91</u>

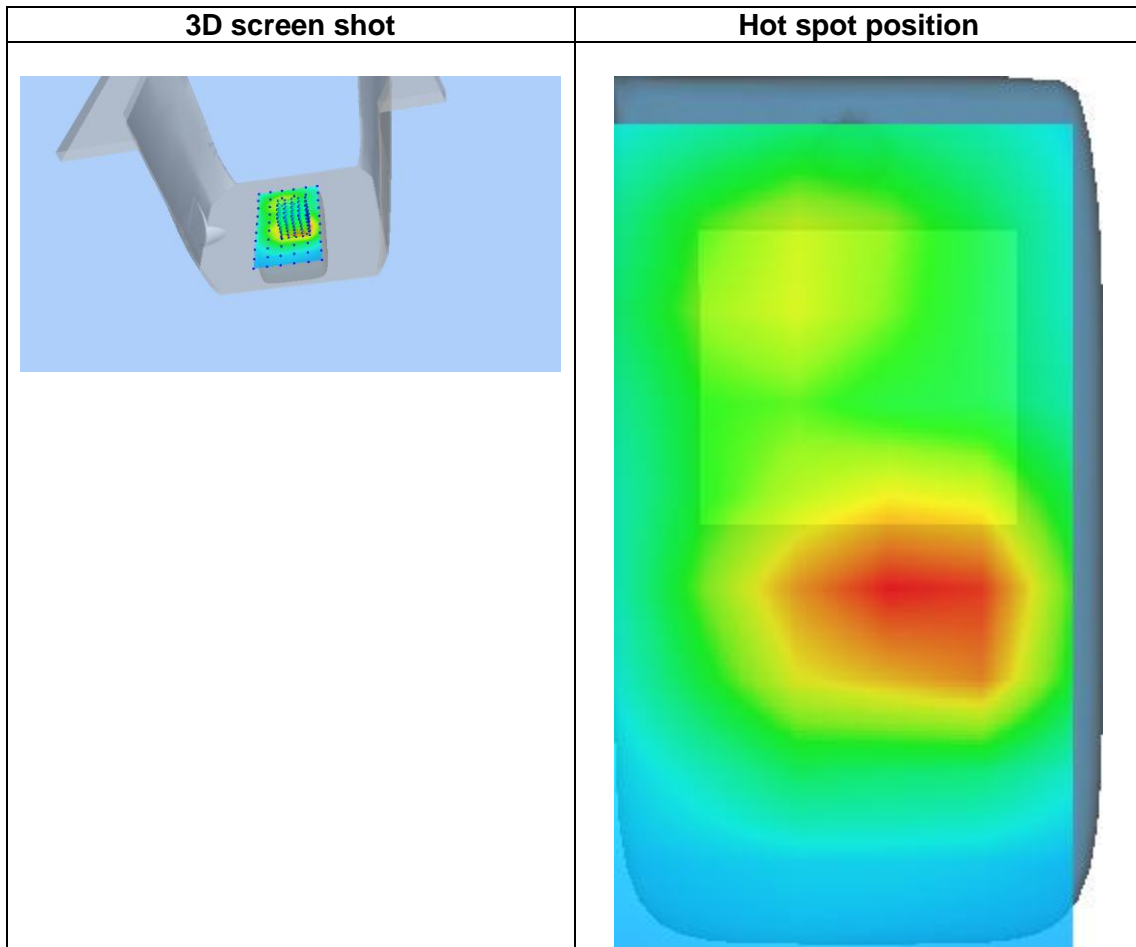
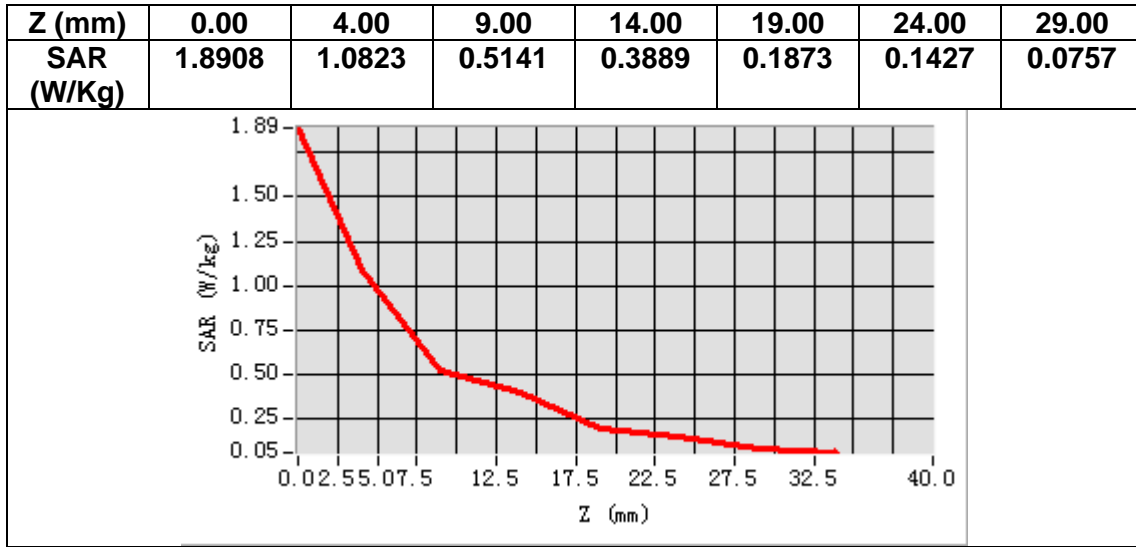
B. SAR Measurement Results

Frequency (MHz)	1860.000000
Relative permittivity (real part)	38.536114
Relative permittivity (imaginary part)	13.829644
Conductivity (S/m)	1.428679
Variation (%)	0.220000



Maximum location: X=7.00, Y=-13.00
SAR Peak: 1.75 W/kg

SAR 10g (W/Kg)	0.578387
SAR 1g (W/Kg)	1.081065



MEASUREMENT 5

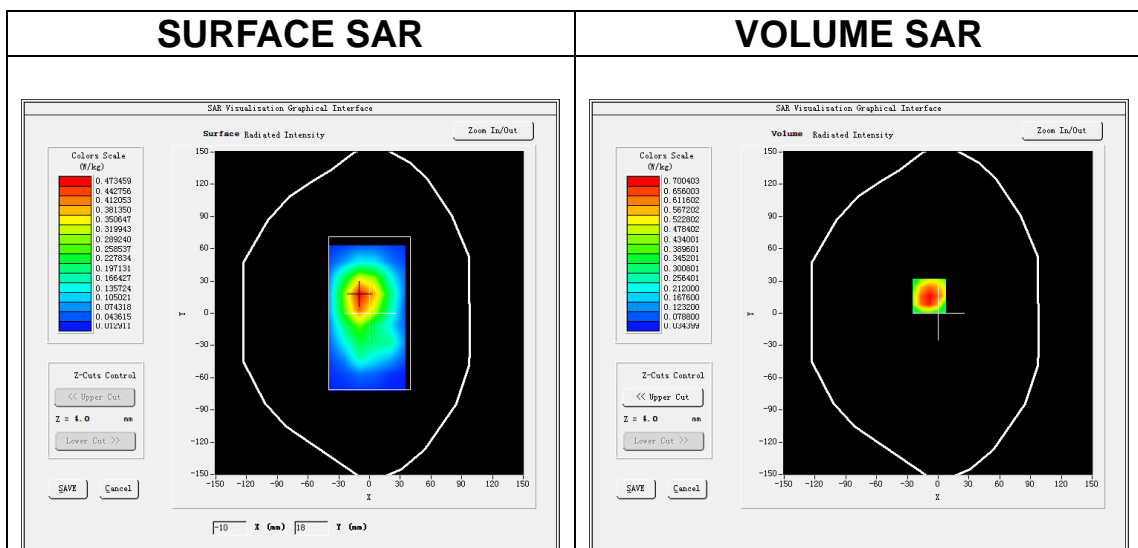
Date of measurement: 14/10/2022

A. Experimental conditions.

Area Scan	<u>dx=15mm dy=15mm, h= 5.00 mm</u>
ZoomScan	<u>5x5x7, dx=8mm dy=8mm dz=5mm</u>
Phantom	<u>Validation plane</u>
Device Position	<u>Body</u>
Band	<u>LTE band 4</u>
Channels	<u>Middle</u>
Signal	<u>LTE (Crest factor: 1.0)</u>
ConvF	<u>1.73</u>

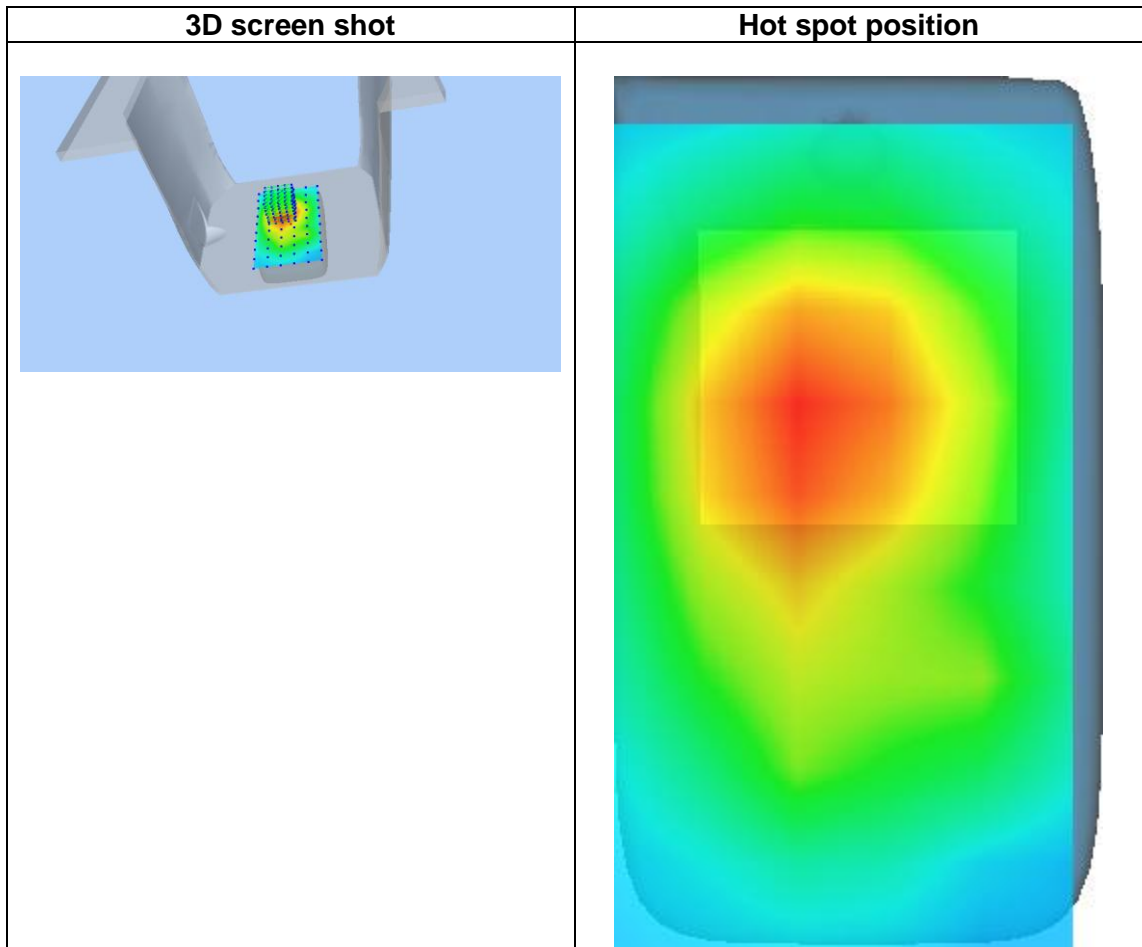
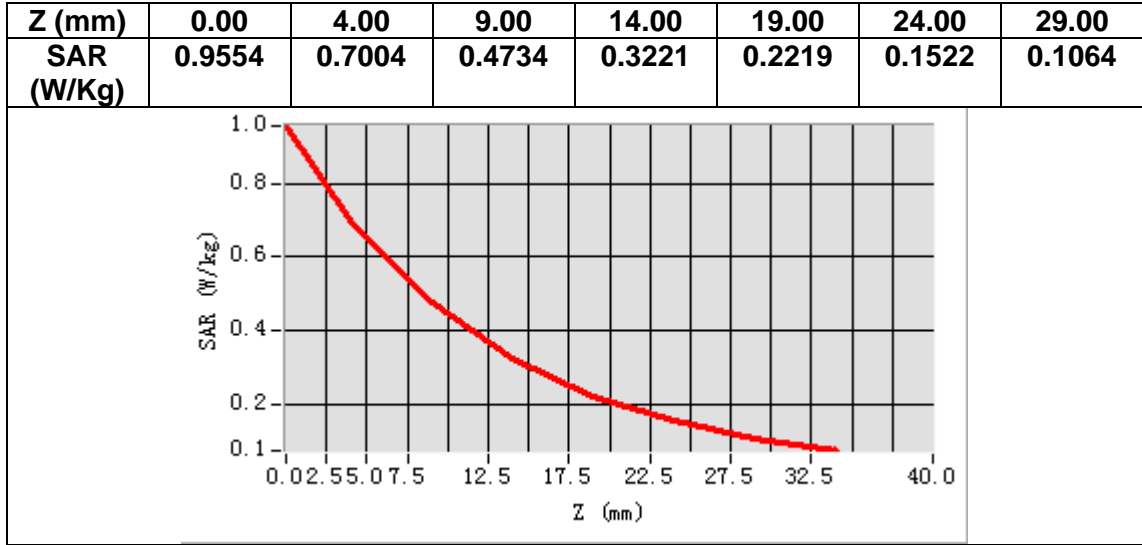
B. SAR Measurement Results

Frequency (MHz)	1732.500000
Relative permittivity (real part)	39.041538
Relative permittivity (imaginary part)	13.654523
Conductivity (S/m)	1.314248
Variation (%)	0.850000



Maximum location: X=-9.00, Y=16.00
SAR Peak: 1.04 W/kg

SAR 10g (W/Kg)	0.414102
SAR 1g (W/Kg)	0.686438



MEASUREMENT 6

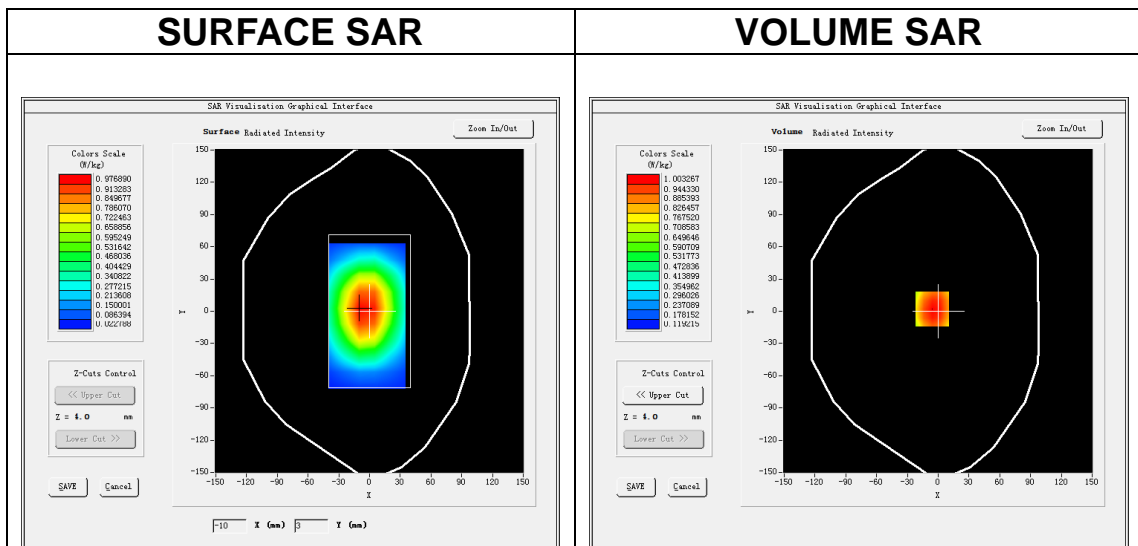
Date of measurement: 20/10/2022

A. Experimental conditions.

Area Scan	<u>dx=15mm dy=15mm, h= 5.00 mm</u>
ZoomScan	<u>5x5x7, dx=8mm dy=8mm dz=5mm</u>
Phantom	<u>Validation plane</u>
Device Position	<u>Body</u>
Band	<u>LTE band 5</u>
Channels	<u>Low</u>
Signal	<u>LTE (Crest factor: 1.0)</u>
ConvF	<u>1.50</u>

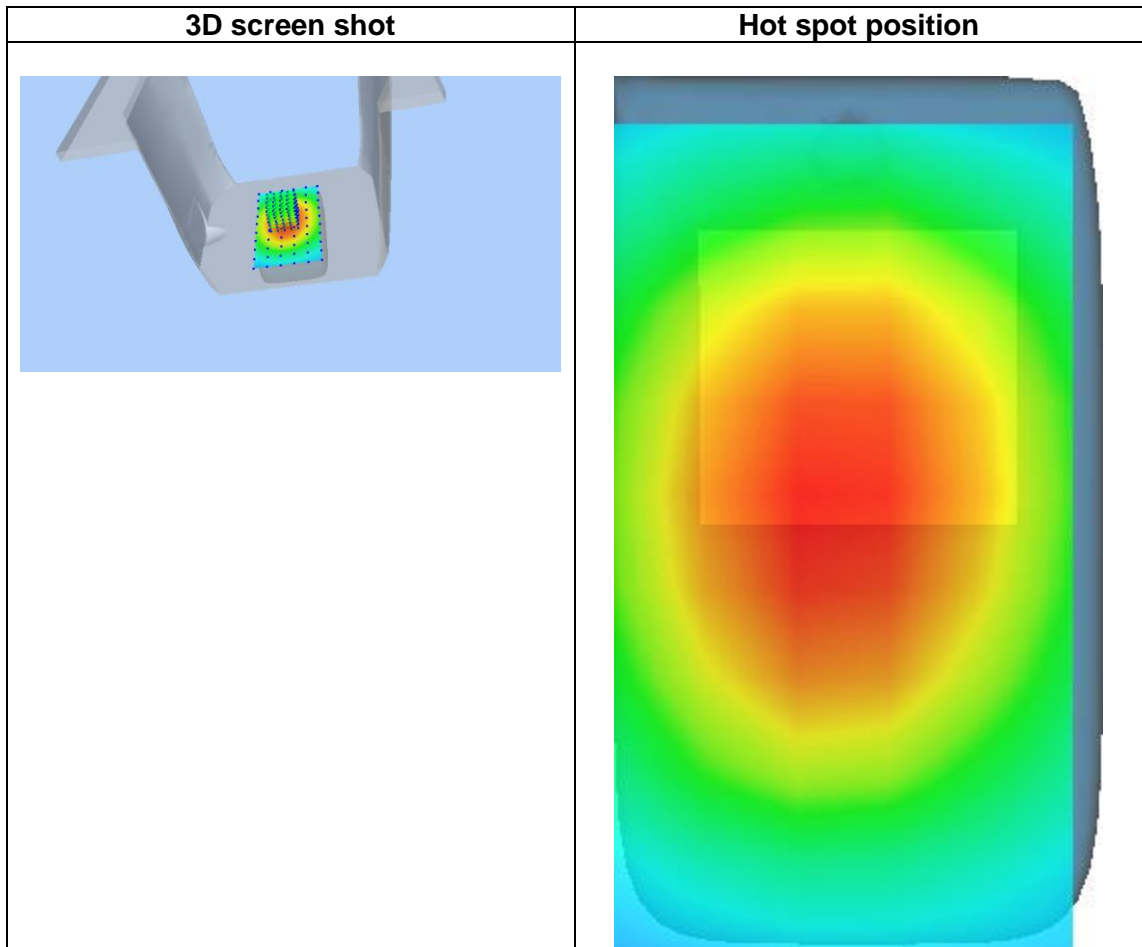
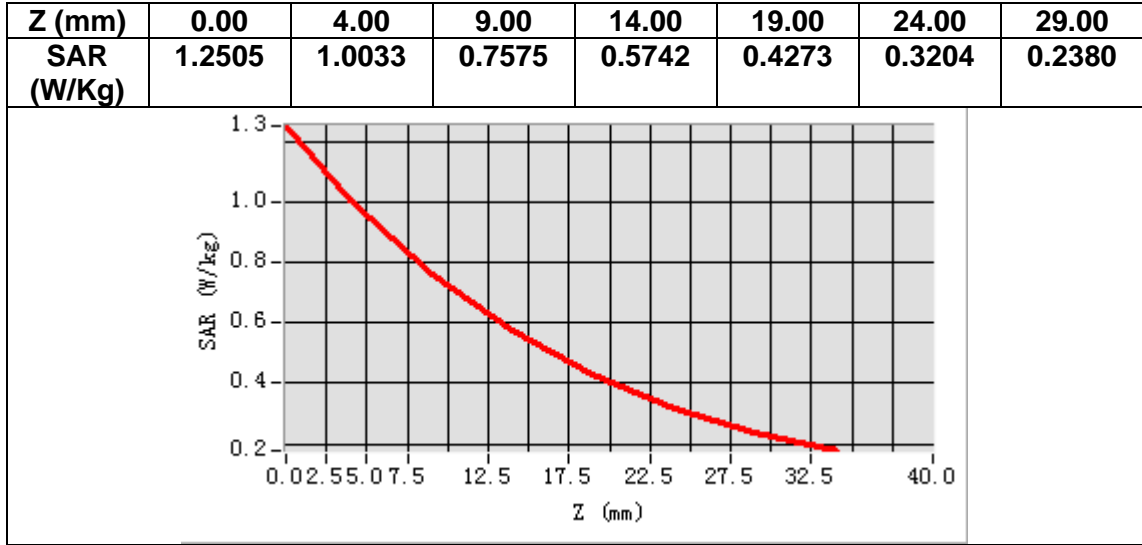
B. SAR Measurement Results

Frequency (MHz)	829.000000
Relative permittivity (real part)	41.267044
Relative permittivity (imaginary part)	19.776232
Conductivity (S/m)	0.910256
Variation (%)	-0.630000



Maximum location: X=-6.00, Y=2.00
SAR Peak: 1.25 W/kg

SAR 10g (W/Kg)	0.705757
SAR 1g (W/Kg)	0.981222



MEASUREMENT 7

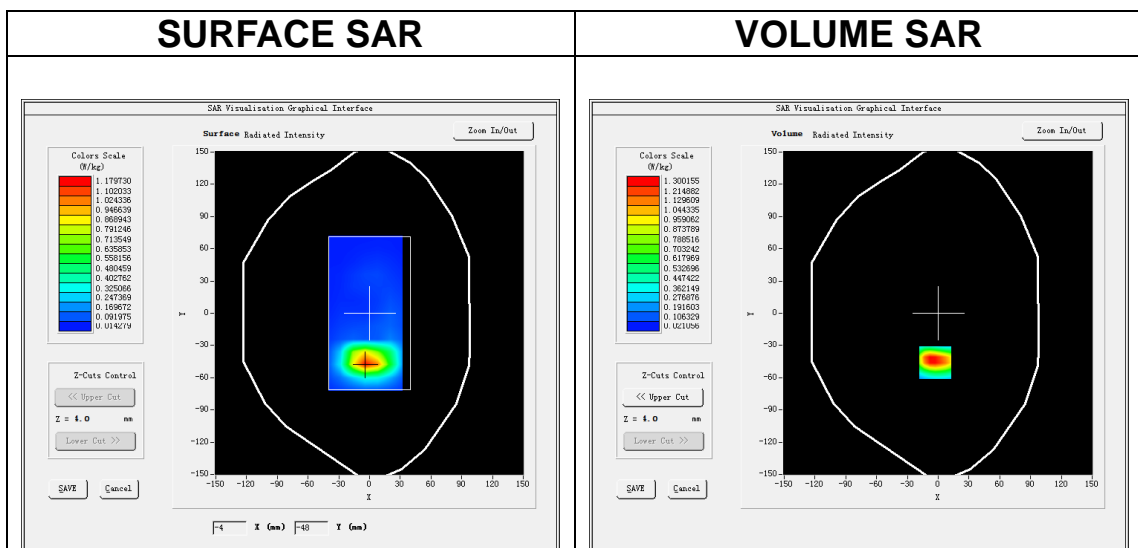
Date of measurement: 17/10/2022

A. Experimental conditions.

Area Scan	<u>dx=12mm dy=12mm, h= 5.00 mm</u>
ZoomScan	<u>7x7x7, dx=5mm dy=5mm dz=5mm</u>
Phantom	<u>Validation plane</u>
Device Position	<u>Body</u>
Band	<u>LTE band 7</u>
Channels	<u>High</u>
Signal	<u>LTE (Crest factor: 1.0)</u>
ConvF	<u>1.87</u>

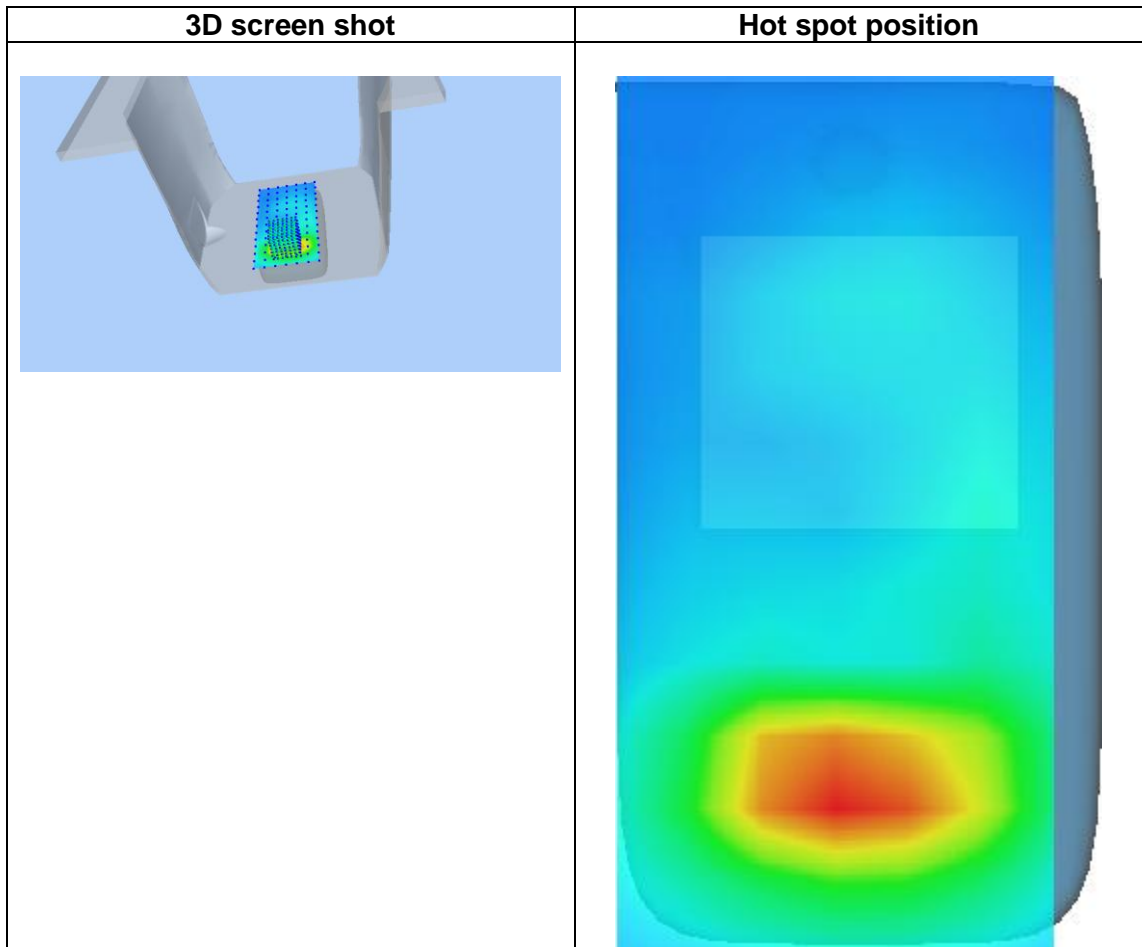
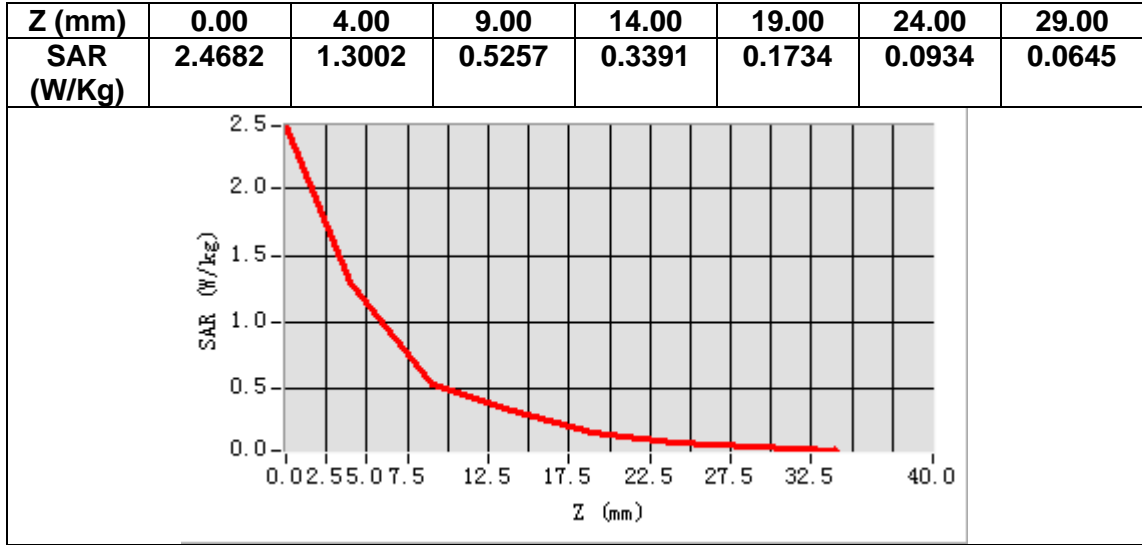
B. SAR Measurement Results

Frequency (MHz)	2560.000000
Relative permittivity (real part)	37.765530
Relative permittivity (imaginary part)	13.248727
Conductivity (S/m)	1.884263
Variation (%)	-2.370000



Maximum location: X=-3.00, Y=-46.00
SAR Peak: 2.22 W/kg

SAR 10g (W/Kg)	0.581140
SAR 1g (W/Kg)	1.239827



MEASUREMENT 8

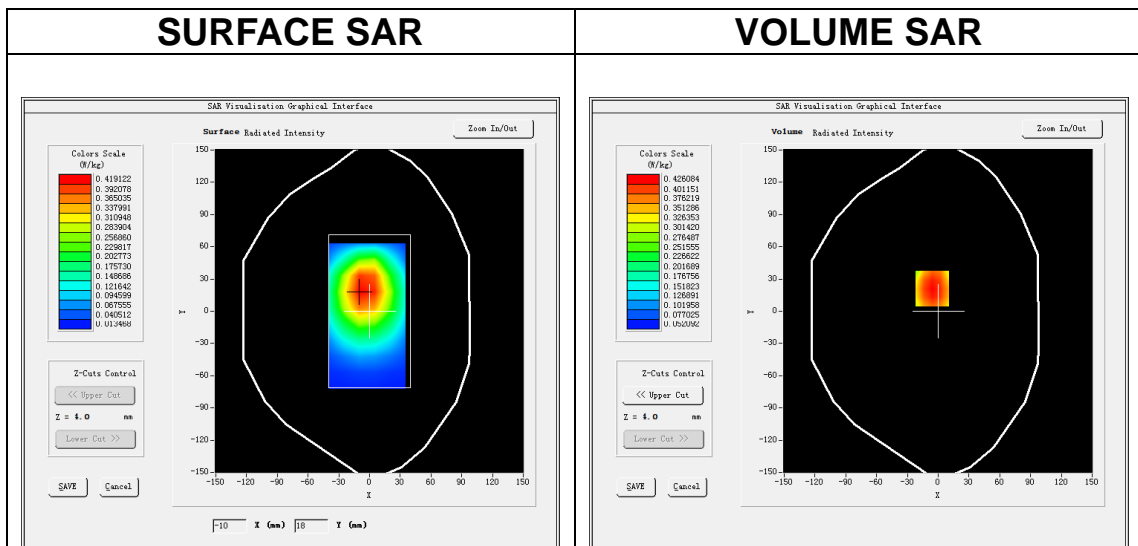
Date of measurement: 9/10/2022

A. Experimental conditions.

Area Scan	<u>dx=15mm dy=15mm, h= 5.00 mm</u>
ZoomScan	<u>5x5x7, dx=8mm dy=8mm dz=5mm</u>
Phantom	<u>Validation plane</u>
Device Position	<u>Body</u>
Band	<u>LTE band 17</u>
Channels	<u>Middle</u>
Signal	<u>LTE (Crest factor: 1.0)</u>
ConvF	<u>1.49</u>

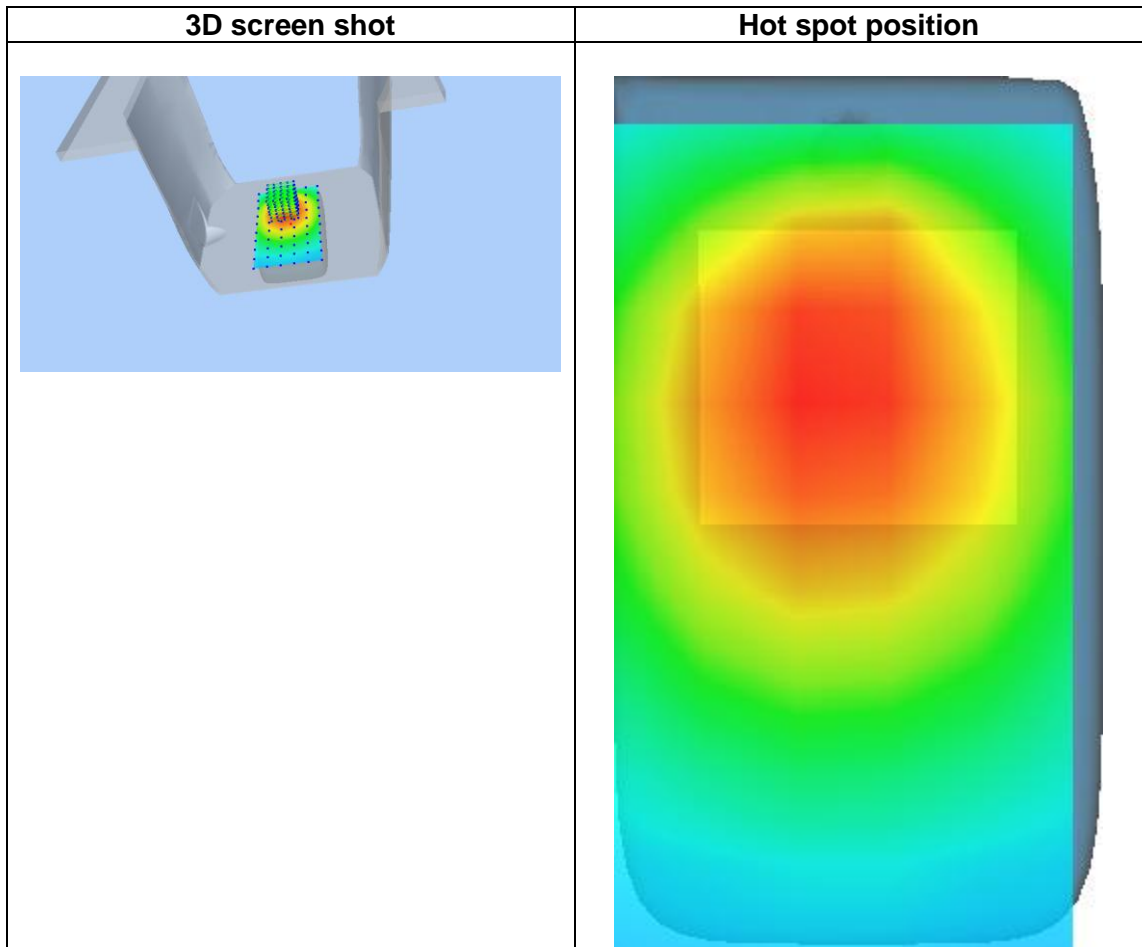
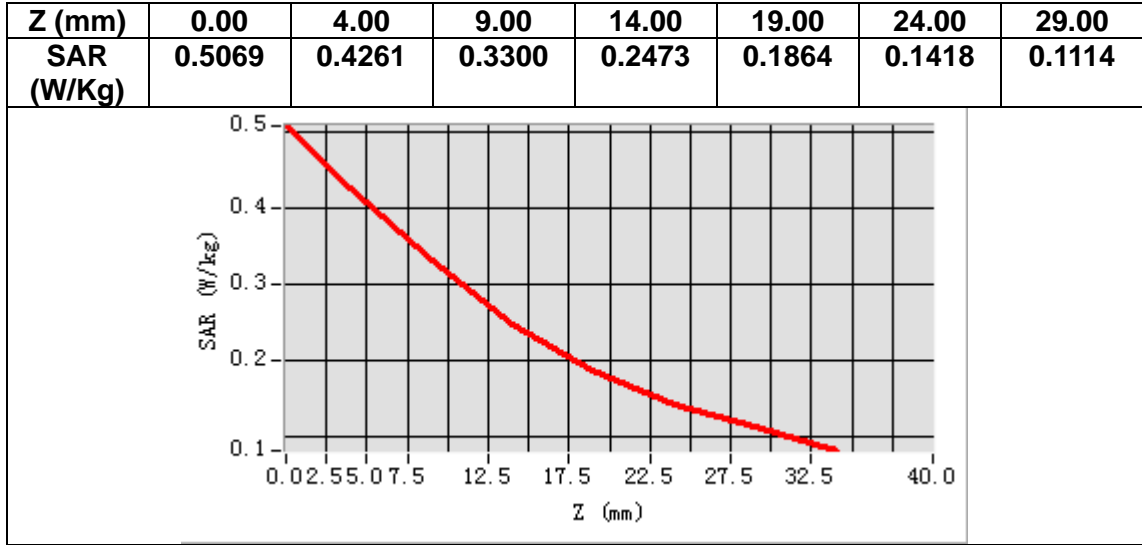
B. SAR Measurement Results

Frequency (MHz)	710.000000
Relative permittivity (real part)	40.745903
Relative permittivity (imaginary part)	21.526640
Conductivity (S/m)	0.849106
Variation (%)	-1.140000



Maximum location: X=-6.00, Y=21.00
SAR Peak: 0.53 W/kg

SAR 10g (W/Kg)	0.300746
SAR 1g (W/Kg)	0.408219



13. Appendix D. Calibration Certificate

Table of contents
E Field Probe - SN 08/16 EPGO287
750 MHz Dipole - SN 03/15 DIP 0G750-355
835 MHz Dipole - SN 03/15 DIP 0G835-347
1800 MHz Dipole - SN 03/15 DIP 1G800-349
1900 MHz Dipole - SN 03/15 DIP 1G900-350
2450 MHz Dipole - SN 03/15 DIP 2G450-352
2600 MHz Dipole - SN 03/15 DIP 2G600-356
Extended Calibration Certificate



COMOSAR E-Field Probe Calibration Report

Ref : ACR.60.1.21.MVGB.A

**SHENZHEN NTEK TESTING TECHNOLOGY
CO., LTD.**

**BUILDING E, FENDA SCIENCE PARK, SANWEI
COMMUNITY, XIXIANG STREET,
BAO'AN DISTRICT, SHENZHEN GUANGDONG, CHINA
MVG COMOSAR DOSIMETRIC E-FIELD PROBE
SERIAL NO.: SN 08/16 EPGO287**

Calibrated at MVG

Z.I. de la pointe du diable

**Technopôle Brest Iroise – 295 avenue Alexis de Rochon
29280 PLOUZANE - FRANCE**

Calibration date: 02/01/2022



Accreditations #2-6789 and #2-6814
Scope available on www.cofrac.fr

Summary:

This document presents the method and results from an accredited COMOSAR E-Field Probe calibration performed at MVG, using the CALIPROBE test bench, for use with a MVG COMOSAR system only. The test results covered by accreditation are traceable to the International System of Units (SI).



COMOSAR E-FIELD PROBE CALIBRATION REPORT

Ref: ACR.60.1.21.MVGB.A

	Name	Function	Date	Signature
Prepared by :	Jérôme Luc	Technical Manager	2/1/2022	<i>JS</i>
Checked by :	Jérôme Luc	Technical Manager	2/1/2022	<i>JS</i>
Approved by :	Yann Toutain	Laboratory Director	2/1/2022	<i>Yann Toutain</i>

Mode d'emploi
2022.02.0
1 10:07:13
+01'00'

PHILIPS

	Customer Name
Distribution :	SHENZHEN NTEK TESTING TECHNOLOGY CO., LTD.

Issue	Name	Date	Modifications
A	Jérôme Luc	2/1/2022	Initial release



COMOSAR E-FIELD PROBE CALIBRATION REPORT

Ref: ACR.60.1.21.MVGB.A

TABLE OF CONTENTS

1	Device Under Test	4
2	Product Description	4
2.1	General Information	4
3	Measurement Method	4
3.1	Linearity	4
3.2	Sensitivity	5
3.3	Lower Detection Limit	5
3.4	Isotropy	5
3.1	Boundary Effect	5
4	Measurement Uncertainty	6
5	Calibration Measurement Results	6
5.1	Sensitivity in air	6
5.2	Linearity	7
5.3	Sensitivity in liquid	8
5.4	Isotropy	9
6	List of Equipment	10



COMOSAR E-FIELD PROBE CALIBRATION REPORT

Ref: ACR.60.1.21.MVGB.A

1 DEVICE UNDER TEST

Device Under Test	
Device Type	COMOSAR DOSIMETRIC E FIELD PROBE
Manufacturer	MVG
Model	SSE2
Serial Number	SN 08/16 EPGO287
Product Condition (new / used)	Used
Frequency Range of Probe	0.15 GHz-6GHz
Resistance of Three Dipoles at Connector	Dipole 1: R1=0.211 MΩ Dipole 2: R2=0.199 MΩ Dipole 3: R3=0.199 MΩ

2 PRODUCT DESCRIPTION

2.1 GENERAL INFORMATION

MVG’s COMOSAR E field Probes are built in accordance to the IEEE 1528, FCC KDB865664 D01, CENELEC EN62209 and CEI/IEC 62209 standards.



Figure 1 – MVG COMOSAR Dosimetric E field Dipole

Probe Length	330 mm
Length of Individual Dipoles	2 mm
Maximum external diameter	8 mm
Probe Tip External Diameter	2.5 mm
Distance between dipoles / probe extremity	1 mm

3 MEASUREMENT METHOD

The IEEE 1528, FCC KDB865664 D01, CENELEC EN62209 and CEI/IEC 62209 standards provide recommended practices for the probe calibrations, including the performance characteristics of interest and methods by which to assess their affect. All calibrations / measurements performed meet the fore mentioned standards.

3.1 LINEARITY

The evaluation of the linearity was done in free space using the waveguide, performing a power sweep to cover the SAR range 0.01W/kg to 100W/kg.



COMOSAR E-FIELD PROBE CALIBRATION REPORT

Ref: ACR.60.1.21.MVGB.A

3.2 SENSITIVITY

The sensitivity factors of the three dipoles were determined using a two step calibration method (air and tissue simulating liquid) using waveguides as outlined in the standards.

3.3 LOWER DETECTION LIMIT

The lower detection limit was assessed using the same measurement set up as used for the linearity measurement. The required lower detection limit is 10 mW/kg.

3.4 ISOTROPY

The axial isotropy was evaluated by exposing the probe to a reference wave from a standard dipole with the dipole mounted under the flat phantom in the test configuration suggested for system validations and checks. The probe was rotated along its main axis from 0 to 360 degrees in 15-degree steps. The hemispherical isotropy is determined by inserting the probe in a thin plastic box filled with tissue-equivalent liquid, with the plastic box illuminated with the fields from a half wave dipole. The dipole is rotated about its axis (0°–180°) in 15° increments. At each step the probe is rotated about its axis (0°–360°).

3.1 BOUNDARY EFFECT

The boundary effect is defined as the deviation between the SAR measured data and the expected exponential decay in the liquid when the probe is oriented normal to the interface. To evaluate this effect, the liquid filled flat phantom is exposed to fields from either a reference dipole or waveguide. With the probe normal to the phantom surface, the peak spatial average SAR is measured and compared to the analytical value at the surface.

The boundary effect uncertainty can be estimated according to the following uncertainty approximation formula based on linear and exponential extrapolations between the surface and $d_{be} + d_{step}$ along lines that are approximately normal to the surface:

$$SAR_{uncertainty} [\%] = \Delta SAR_{be} \frac{(d_{be} + d_{step})^2}{2d_{step}} \frac{(e^{-d_{be}/\delta})}{\delta/2} \text{ for } (d_{be} + d_{step}) < 10 \text{ mm}$$

where

- $SAR_{uncertainty}$ is the uncertainty in percent of the probe boundary effect
- d_{be} is the distance between the surface and the closest *zoom-scan* measurement point, in millimetre
- Δ_{step} is the separation distance between the first and second measurement points that are closest to the phantom surface, in millimetre, assuming the boundary effect at the second location is negligible
- δ is the minimum penetration depth in millimetres of the head tissue-equivalent liquids defined in this standard, i.e., $\delta \approx 14$ mm at 3 GHz;
- ΔSAR_{be} in percent of SAR is the deviation between the measured SAR value, at the distance d_{be} from the boundary, and the analytical SAR value.



COMOSAR E-FIELD PROBE CALIBRATION REPORT

Ref: ACR.60.1.21.MVGB.A

The measured worst case boundary effect SARuncertainty[%] for scanning distances larger than 4mm is 1.0% Limit ,2%).

4 MEASUREMENT UNCERTAINTY

The guidelines outlined in the IEEE 1528, OET 65 Bulletin C, CENELEC EN50361 and CEI/IEC 62209 standards were followed to generate the measurement uncertainty associated with an E-field probe calibration using the waveguide technique. All uncertainties listed below represent an expanded uncertainty expressed at approximately the 95% confidence level using a coverage factor of k=2, traceable to the Internationally Accepted Guides to Measurement Uncertainty.

Uncertainty analysis of the probe calibration in waveguide					
ERROR SOURCES	Uncertainty value (%)	Probability Distribution	Divisor	ci	Standard Uncertainty (%)
Expanded uncertainty 95 % confidence level k = 2					14 %

5 CALIBRATION MEASUREMENT RESULTS

Calibration Parameters	
Liquid Temperature	20 +/- 1 °C
Lab Temperature	20 +/- 1 °C
Lab Humidity	30-70 %

5.1 SENSITIVITY IN AIR

Normx dipole 1 (µV/(V/m) ²)	Normy dipole 2 (µV/(V/m) ²)	Normz dipole 3 (µV/(V/m) ²)
0.72	0.66	0.77

DCP dipole 1 (mV)	DCP dipole 2 (mV)	DCP dipole 3 (mV)
107	110	110

Calibration curves ei=f(V) (i=1,2,3) allow to obtain E-field value using the formula:

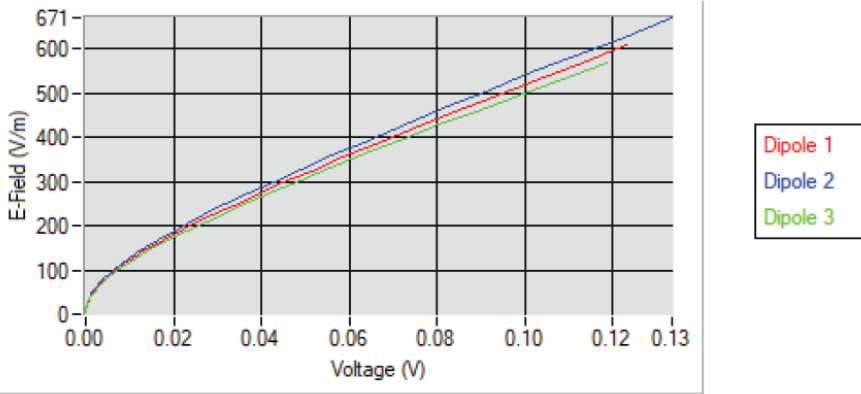
$$E = \sqrt{E_1^2 + E_2^2 + E_3^2}$$



COMOSAR E-FIELD PROBE CALIBRATION REPORT

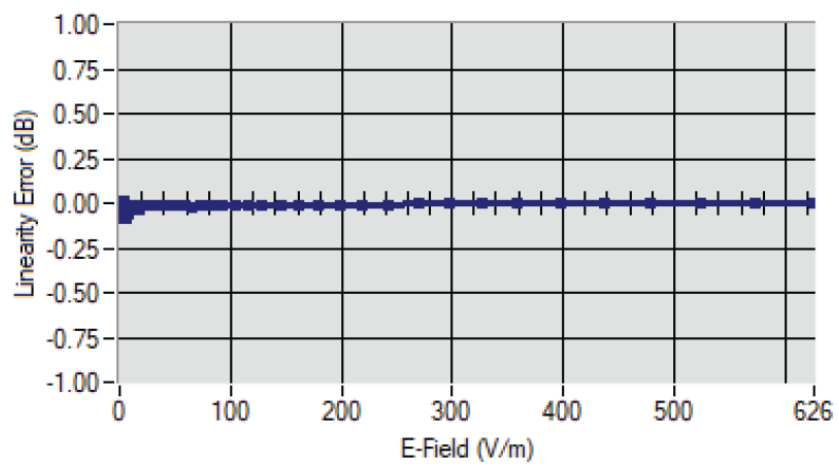
Ref: ACR.60.1.21.MVGB.A

Calibration curves



5.2 LINEARITY

Linearity



Linearity: +/-1.90% (+/-0.08dB)



COMOSAR E-FIELD PROBE CALIBRATION REPORT

Ref: ACR.60.1.21.MVGB.A

5.3 SENSITIVITY IN LIQUID

Liquid	Frequency (MHz +/- 100MHz)	ConvF
HL750	750	1.49
HL850	835	1.50
HL900	900	1.61
HL1800	1800	1.73
HL1900	1900	1.91
HL2000	2000	1.97
HL2300	2300	1.92
HL2450	2450	1.98
HL2600	2600	1.87
HL3300	3300	1.79
HL3500	3500	1.85
HL3700	3700	1.79
HL3900	3900	2.07
HL4200	4200	2.21
HL4600	4600	2.25
HL4900	4900	2.05
HL5200	5200	1.80
HL5400	5400	2.05
HL5600	5600	2.16
HL5800	5800	2.07

LOWER DETECTION LIMIT: 8mW/kg

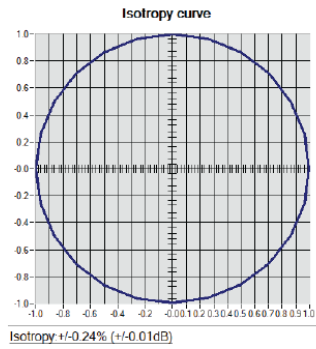


COMOSAR E-FIELD PROBE CALIBRATION REPORT

Ref: ACR.60.1.21.MVGB.A

5.4 ISOTROPY

HL1800 MHz





COMOSAR E-FIELD PROBE CALIBRATION REPORT

Ref: ACR.60.1.21.MVGB.A

6 LIST OF EQUIPMENT

Equipment Summary Sheet				
Equipment Description	Manufacturer / Model	Identification No.	Current Calibration Date	Next Calibration Date
Flat Phantom	MVG	SN-20/09-SAM71	Validated. No cal required.	Validated. No cal required.
COMOSAR Test Bench	Version 3	NA	Validated. No cal required.	Validated. No cal required.
Network Analyzer	Rohde & Schwarz ZVM	100203	05/2019	05/2022
Network Analyzer – Calibration kit	Rohde & Schwarz ZV-Z235	101223	05/2019	05/2022
Multimeter	Keithley 2000	1160271	02/2020	02/2023
Signal Generator	Rohde & Schwarz SMB	106589	04/2019	04/2022
Amplifier	Aethercomm	SN 046	Characterized prior to test. No cal required.	Characterized prior to test. No cal required.
Power Meter	NI-USB 5680	170100013	05/2019	05/2022
Directional Coupler	Narda 4216-20	01386	Characterized prior to test. No cal required.	Characterized prior to test. No cal required.
Waveguide	Mega Industries	069Y7-158-13-712	Validated. No cal required.	Validated. No cal required.
Waveguide Transition	Mega Industries	069Y7-158-13-701	Validated. No cal required.	Validated. No cal required.
Waveguide Termination	Mega Industries	069Y7-158-13-701	Validated. No cal required.	Validated. No cal required.
Temperature / Humidity Sensor	Testo 184 H1	44220687	05/2020	05/2023



SAR Reference Dipole Calibration Report

Ref : ACR.60.2.21.MVGB.A

**SHENZHEN NTEK TESTING TECHNOLOGY
CO., LTD.**

**BUILDING E, FENDA SCIENCE PARK, SANWEI
COMMUNITY, XIXIANG STREET,
BAO'AN DISTRICT, SHENZHEN GUANGDONG, CHINA
MVG COMOSAR REFERENCE DIPOLE**

FREQUENCY: 750 MHZ

SERIAL NO.: SN 03/15 DIP0G750-355

Calibrated at MVG

Z.I. de la pointe du diable

**Technopôle Brest Iroise – 295 avenue Alexis de Rochon
29280 PLOUZANE - FRANCE**

Calibration date: 03/01/2021



Accreditations #2-6789 and #2-6814
Scope available on www.cofrac.fr

Summary:

This document presents the method and results from an accredited SAR reference dipole calibration performed at MVG, using the COMOSAR test bench. The test results covered by accreditation are traceable to the International System of Units (SI).



SAR REFERENCE DIPOLE CALIBRATION REPORT

Ref: ACR.60.2.21.MVGB.A

	Name	Function	Date	Signature
Prepared by :	Jérôme Luc	Technical Manager	3/1/2021	<i>JL</i>
Checked by :	Jérôme Luc	Technical Manager	3/1/2021	<i>JL</i>
Approved by :	Yann Toutain	Laboratory Director	3/1/2021	<i>Yann Toutain</i>

2021.03.0
1 13:08:18
+01'00'

	Customer Name
Distribution :	SHENZHEN NTEK TESTING TECHNOLOGY CO., LTD.

Issue	Name	Date	Modifications
A	Jérôme Luc	3/1/2021	Initial release



SAR REFERENCE DIPOLE CALIBRATION REPORT

Ref: ACR.60.2.21.MVGB.A

TABLE OF CONTENTS

1	Introduction.....	4
2	Device Under Test	4
3	Product Description	4
3.1	General Information	4
4	Measurement Method	5
4.1	Return Loss Requirements	5
4.2	Mechanical Requirements	5
5	Measurement Uncertainty.....	5
5.1	Return Loss	5
5.2	Dimension Measurement	5
5.3	Validation Measurement	5
6	Calibration Measurement Results.....	6
6.1	Return Loss and Impedance	6
6.2	Mechanical Dimensions	6
7	Validation measurement	7
7.1	Measurement Condition	7
7.2	Head Liquid Measurement	7
7.3	Measurement Result	8
8	List of Equipment	10



SAR REFERENCE DIPOLE CALIBRATION REPORT

Ref. ACR.60.2.21.MVGB.A

1 INTRODUCTION

This document contains a summary of the requirements set forth by the IEEE 1528, FCC KDBs and CEI/IEC 62209 standards for reference dipoles used for SAR measurement system validations and the measurements that were performed to verify that the product complies with the fore mentioned standards.

2 DEVICE UNDER TEST

Device Under Test	
Device Type	COMOSAR 750 MHz REFERENCE DIPOLE
Manufacturer	MVG
Model	SID750
Serial Number	SN 03/15 DIP0G750-355
Product Condition (new / used)	Used

3 PRODUCT DESCRIPTION

3.1 GENERAL INFORMATION

MVG’s COMOSAR Validation Dipoles are built in accordance to the IEEE 1528, FCC KDBs and CEI/IEC 62209 standards. The product is designed for use with the COMOSAR test bench only.



Figure 1 – MVG COMOSAR Validation Dipole



SAR REFERENCE DIPOLE CALIBRATION REPORT

Ref: ACR.60.2.21.MVGB.A

4 MEASUREMENT METHOD

The IEEE 1528, FCC KDBs and CEI/IEC 62209 standards provide requirements for reference dipoles used for system validation measurements. The following measurements were performed to verify that the product complies with the fore mentioned standards.

4.1 RETURN LOSS REQUIREMENTS

The dipole used for SAR system validation measurements and checks must have a return loss of -20 dB or better. The return loss measurement shall be performed against a liquid filled flat phantom, with the phantom constructed as outlined in the fore mentioned standards. A direct method is used with a network analyser and its calibration kit, both with a valid ISO17025 calibration.

4.2 MECHANICAL REQUIREMENTS

The IEEE Std. 1528 and CEI/IEC 62209 standards specify the mechanical components and dimensions of the validation dipoles, with the dimension's frequency and phantom shell thickness dependent. The COMOSAR test bench employs a 2 mm phantom shell thickness therefore the dipoles sold for use with the COMOSAR test bench comply with the requirements set forth for a 2 mm phantom shell thickness. A direct method is used with a ISO17025 calibrated caliper.

5 MEASUREMENT UNCERTAINTY

All uncertainties listed below represent an expanded uncertainty expressed at approximately the 95% confidence level using a coverage factor of k=2, traceable to the Internationally Accepted Guides to Measurement Uncertainty.

5.1 RETURN LOSS

The following uncertainties apply to the return loss measurement:

Frequency band	Expanded Uncertainty on Return Loss
400-6000MHz	0.08 LIN

5.2 DIMENSION MEASUREMENT

The following uncertainties apply to the dimension measurements:

Length (mm)	Expanded Uncertainty on Length
0 - 300	0.20 mm
300 - 450	0.44 mm

5.3 VALIDATION MEASUREMENT

The guidelines outlined in the IEEE 1528, FCC KDBs, CENELEC EN50361 and CEI/IEC 62209 standards were followed to generate the measurement uncertainty for validation measurements.

Scan Volume	Expanded Uncertainty



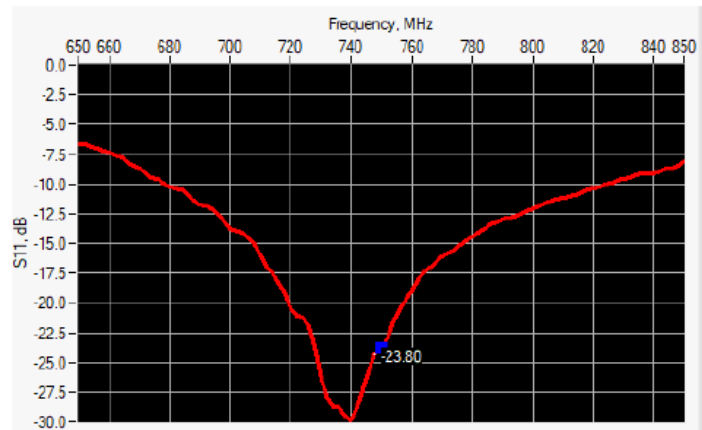
SAR REFERENCE DIPOLE CALIBRATION REPORT

Ref: ACR.60.2.21.MVGB.A

1 g	19 % (SAR)
10 g	19 % (SAR)

6 CALIBRATION MEASUREMENT RESULTS

6.1 RETURN LOSS AND IMPEDANCE



Frequency (MHz)	Return Loss (dB)	Requirement (dB)	Impedance
750	-23.80	-20	56.4 Ω - 0.1 jΩ

6.2 MECHANICAL DIMENSIONS

Frequency MHz	L mm		h mm		d mm	
	required	measured	required	measured	required	measured
300	420.0 ±1 %		250.0 ±1 %		6.35 ±1 %	
450	290.0 ±1 %		166.7 ±1 %		6.35 ±1 %	
750	176.0 ±1 %	-	100.0 ±1 %	-	6.35 ±1 %	-
835	161.0 ±1 %		89.8 ±1 %		3.6 ±1 %	
900	149.0 ±1 %		83.3 ±1 %		3.6 ±1 %	
1450	89.1 ±1 %		51.7 ±1 %		3.6 ±1 %	
1500	80.5 ±1 %		50.0 ±1 %		3.6 ±1 %	
1640	79.0 ±1 %		45.7 ±1 %		3.6 ±1 %	
1750	75.2 ±1 %		42.9 ±1 %		3.6 ±1 %	
1800	72.0 ±1 %		41.7 ±1 %		3.6 ±1 %	
1900	68.0 ±1 %		39.5 ±1 %		3.6 ±1 %	
1950	66.3 ±1 %		38.5 ±1 %		3.6 ±1 %	
2000	64.5 ±1 %		37.5 ±1 %		3.6 ±1 %	
2100	61.0 ±1 %		35.7 ±1 %		3.6 ±1 %	
2300	55.5 ±1 %		32.6 ±1 %		3.6 ±1 %	
2450	51.5 ±1 %		30.4 ±1 %		3.6 ±1 %	



SAR REFERENCE DIPOLE CALIBRATION REPORT

Ref. ACR.60.2.21.MVGB.A

2600	48.5 ±1 %.		28.8 ±1 %.		3.6 ±1 %.	
3000	41.5 ±1 %.		25.0 ±1 %.		3.6 ±1 %.	
3500	37.0±1 %.		26.4 ±1 %.		3.6 ±1 %.	
3700	34.7±1 %.		26.4 ±1 %.		3.6 ±1 %.	

7 VALIDATION MEASUREMENT

The IEEE Std. 1528, FCC KDBs and CEI/IEC 62209 standards state that the system validation measurements must be performed using a reference dipole meeting the fore mentioned return loss and mechanical dimension requirements. The validation measurement must be performed against a liquid filled flat phantom, with the phantom constructed as outlined in the fore mentioned standards. Per the standards, the dipole shall be positioned below the bottom of the phantom, with the dipole length centered and parallel to the longest dimension of the flat phantom, with the top surface of the dipole at the described distance from the bottom surface of the phantom.

7.1 MEASUREMENT CONDITION

Software	OPENSAR V5
Phantom	SN 13/09 SAM68
Probe	SN 41/18 EPG0333
Liquid	Head Liquid Values: eps' : 41.8 sigma : 0.82
Distance between dipole center and liquid	15.0 mm
Area scan resolution	dx=8mm/dy=8mm
Zoon Scan Resolution	dx=8mm/dy=8mm/dz=5mm
Frequency	750750 MHz
Input power	20 dBm
Liquid Temperature	20 +/- 1 °C
Lab Temperature	20 +/- 1 °C
Lab Humidity	30-70 %

7.2 HEAD LIQUID MEASUREMENT

Frequency MHz	Relative permittivity (ε _r)		Conductivity (σ) S/m	
	required	measured	required	measured
300	45.3 ±10 %		0.87 ±10 %	
450	43.5 ±10 %		0.87 ±10 %	
750	41.9 ±10 %	41.8	0.89 ±10 %	0.82
835	41.5 ±10 %		0.90 ±10 %	
900	41.5 ±10 %		0.97 ±10 %	
1450	40.5 ±10 %		1.20 ±10 %	
1500	40.4 ±10 %		1.23 ±10 %	
1640	40.2 ±10 %		1.31 ±10 %	
1750	40.1 ±10 %		1.37 ±10 %	
1800	40.0 ±10 %		1.40 ±10 %	
1900	40.0 ±10 %		1.40 ±10 %	
1950	40.0 ±10 %		1.40 ±10 %	
2000	40.0 ±10 %		1.40 ±10 %	



SAR REFERENCE DIPOLE CALIBRATION REPORT

Ref: ACR.60.2.21.MVGB.A

2100	39.8 ±10 %		1.49 ±10 %	
2300	39.5 ±10 %		1.67 ±10 %	
2450	39.2 ±10 %		1.80 ±10 %	
2600	39.0 ±10 %		1.96 ±10 %	
3000	38.5 ±10 %		2.40 ±10 %	
3500	37.9 ±10 %		2.91 ±10 %	

7.3 MEASUREMENT RESULT

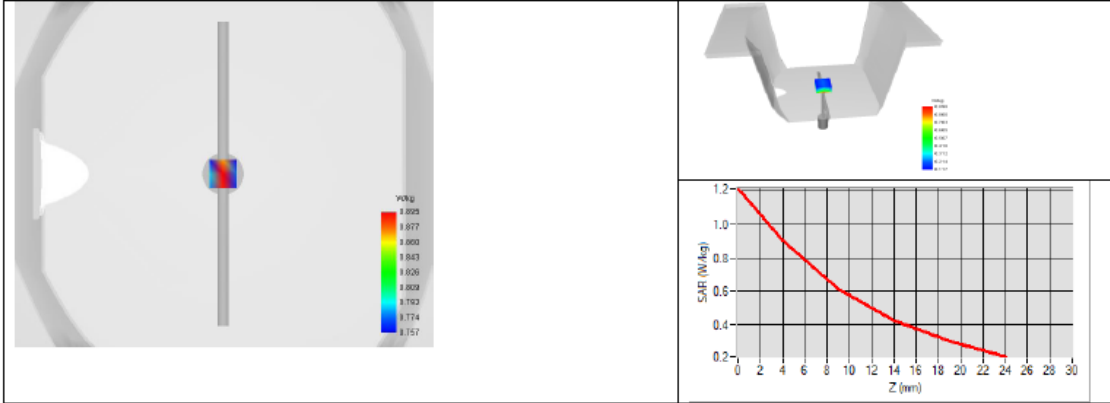
The IEEE Std. 1528 and CEI/IEC 62209 standards state that the system validation measurements should produce the SAR values shown below (for phantom thickness of 2 mm), within the uncertainty for the system validation. All SAR values are normalized to 1 W forward power. In bracket, the measured SAR is given with the used input power.

Frequency MHz	1 g SAR (W/kg/W)		10 g SAR (W/kg/W)	
	required	measured	required	measured
300	2.85		1.94	
450	4.58		3.06	
750	8.49	8.53 (0.85)	5.55	5.56 (0.56)
835	9.56		6.22	
900	10.9		6.99	
1450	29		16	
1500	30.5		16.8	
1640	34.2		18.4	
1750	36.4		19.3	
1800	38.4		20.1	
1900	39.7		20.5	
1950	40.5		20.9	
2000	41.1		21.1	
2100	43.6		21.9	
2300	48.7		23.3	
2450	52.4		24	
2600	55.3		24.6	
3000	63.8		25.7	
3500	67.1		25	



SAR REFERENCE DIPOLE CALIBRATION REPORT

Ref. ACR.60.2.21.MVGB.A





SAR REFERENCE DIPOLE CALIBRATION REPORT

Ref. ACR.60.2.21.MVGB.A

8 LIST OF EQUIPMENT

Equipment Summary Sheet				
Equipment Description	Manufacturer / Model	Identification No.	Current Calibration Date	Next Calibration Date
SAM Phantom	MVG	SN-13/09-SAM68	Validated. No cal required.	Validated. No cal required.
COMOSAR Test Bench	Version 3	NA	Validated. No cal required.	Validated. No cal required.
Network Analyzer	Rohde & Schwarz ZVM	100203	05/2019	05/2022
Network Analyzer – Calibration kit	Rohde & Schwarz ZV-Z235	101223	05/2019	05/2022
Calipers	Mitutoyo	SN 0009732	10/2019	10/2022
Reference Probe	MVG	EPGO333 SN 41/18	05/2020	05/2021
Multimeter	Keithley 2000	1160271	02/2020	02/2023
Signal Generator	Rohde & Schwarz SMB	106589	04/2019	04/2022
Amplifier	Aethercomm	SN 046	Characterized prior to test. No cal required.	Characterized prior to test. No cal required.
Power Meter	NI-USB 5680	170100013	05/2019	05/2022
Directional Coupler	Narda 4216-20	01386	Characterized prior to test. No cal required.	Characterized prior to test. No cal required.
Temperature / Humidity Sensor	Testo 184 H1	44220687	05/2020	05/2023



SAR Reference Dipole Calibration Report

Ref : ACR.60.3.21.MVGB.A

SHENZHEN NTEK TESTING TECHNOLOGY CO., LTD.

**BUILDING E, FENDA SCIENCE PARK, SANWEI
COMMUNITY, XIXIANG STREET,
BAO'AN DISTRICT, SHENZHEN GUANGDONG, CHINA**

MVG COMOSAR REFERENCE DIPOLE

FREQUENCY: 835 MHZ

SERIAL NO.: SN 03/15 DIP0G835-347

Calibrated at MVG

Z.I. de la pointe du diable

**Technopôle Brest Iroise – 295 avenue Alexis de Rochon
29280 PLOUZANE - FRANCE**

Calibration date: 03/01/2021



Accreditations #2-6789 and #2-6814
Scope available on www.cofrac.fr

Summary:

This document presents the method and results from an accredited SAR reference dipole calibration performed at MVG, using the COMOSAR test bench. The test results covered by accreditation are traceable to the International System of Units (SI).



SAR REFERENCE DIPOLE CALIBRATION REPORT

Ref: ACR.60.3.21.MVGB.A

	Name	Function	Date	Signature
Prepared by :	Jérôme Luc	Technical Manager	3/1/2021	<i>JLS</i>
Checked by :	Jérôme Luc	Technical Manager	3/1/2021	<i>JLS</i>
Approved by :	Yann Toutain	Laboratory Director	3/1/2021	<i>Yann Toutain</i>

Made d'envoi: 2021.03.01 13:09:12 +01'00'

PHILIPS

	Customer Name
Distribution :	SHENZHEN NTEK TESTING TECHNOLOGY CO., LTD.

Issue	Name	Date	Modifications
A	Jérôme Luc	3/1/2021	Initial release



SAR REFERENCE DIPOLE CALIBRATION REPORT

Ref. ACR.60.3.21.MVGB.A

TABLE OF CONTENTS

1	Introduction.....	4
2	Device Under Test	4
3	Product Description	4
3.1	General Information	4
4	Measurement Method	5
4.1	Return Loss Requirements	5
4.2	Mechanical Requirements	5
5	Measurement Uncertainty.....	5
5.1	Return Loss	5
5.2	Dimension Measurement	5
5.3	Validation Measurement	5
6	Calibration Measurement Results.....	6
6.1	Return Loss and Impedance	6
6.2	Mechanical Dimensions	6
7	Validation measurement	7
7.1	Measurement Condition	7
7.2	Head Liquid Measurement	7
7.3	Measurement Result	8
8	List of Equipment	10