

Antenna model number:

gh6681\_Main\_v3.2

gh6681\_DIV\_v3.0

gh6681\_WBG\_v3.0

**1.Main Antenna:**

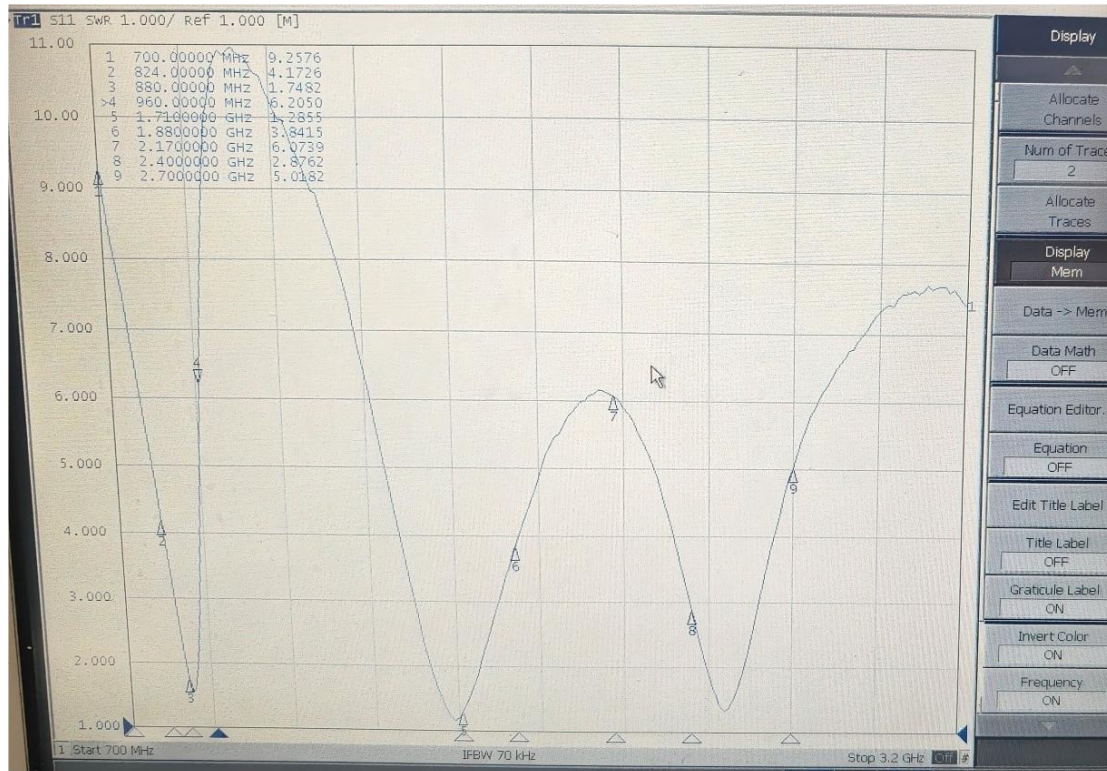
Support Bands:

GSM850/900/1800/1900;

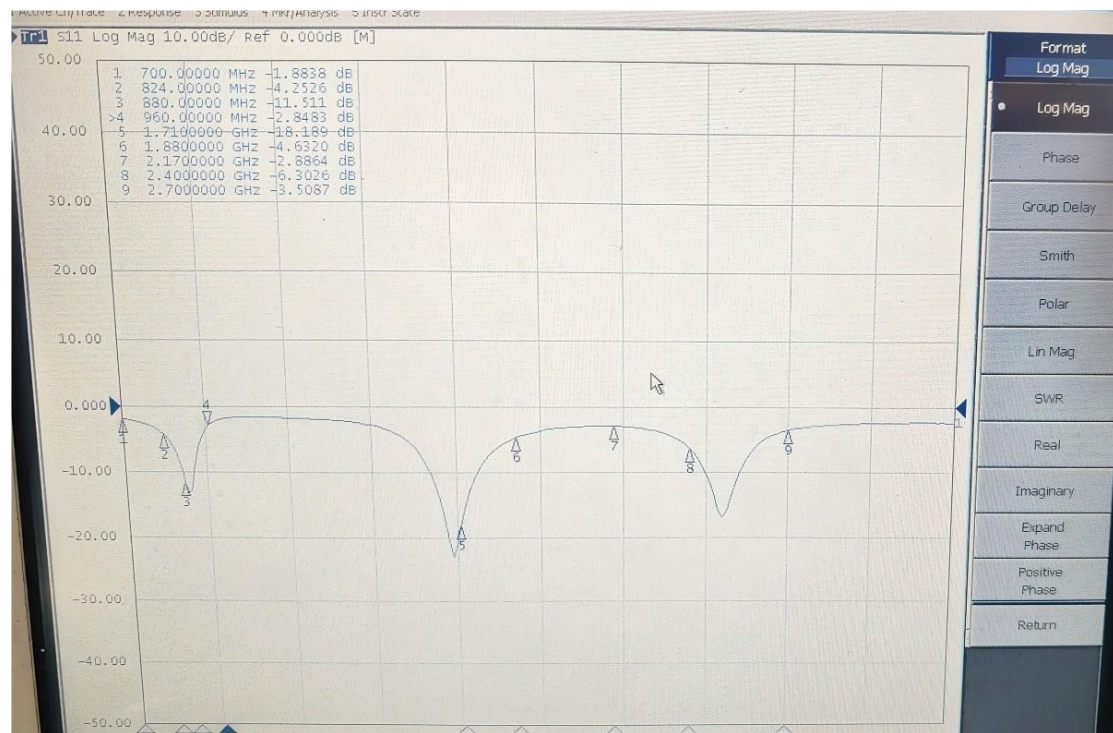
WCDMA B1/B2/B4/B5/B8;

LTEB1/B2/B3/B4/B5/B7/B12/B17/B28/B38/B66;

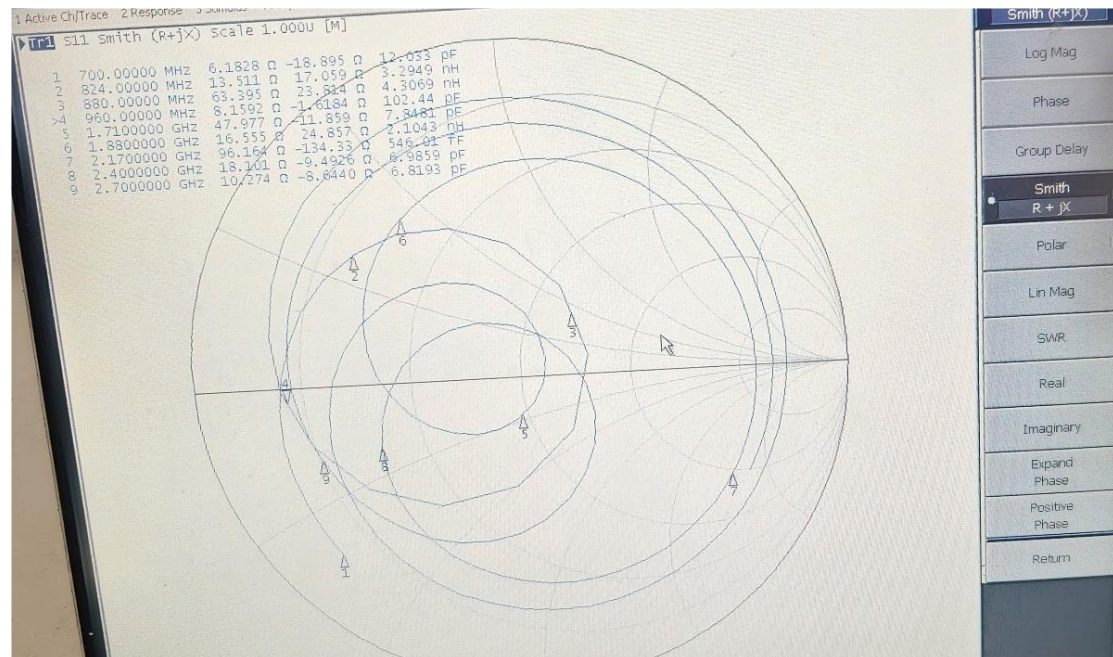
VSWR:



RL:



SMITH:



Max gain of main antenna:

GSM850/ WCDMA 5/ LTE B5:-5dbi;

GSM900/ WCDMA 8:-5dbi;

DCS1800/ LTE B3:-1dbi;

PCS1900:-2dbi;

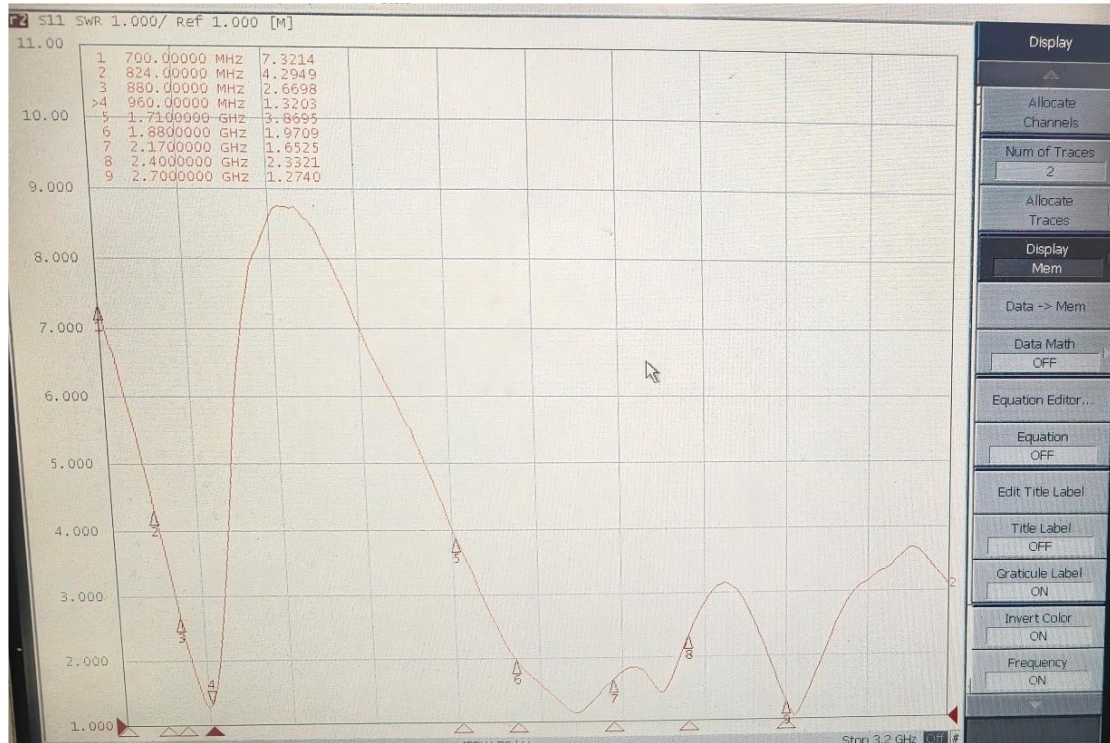
WCDMA 1/ LTE B1:-1dbi;

WCDMA 2/ LTE B2:0dbi;

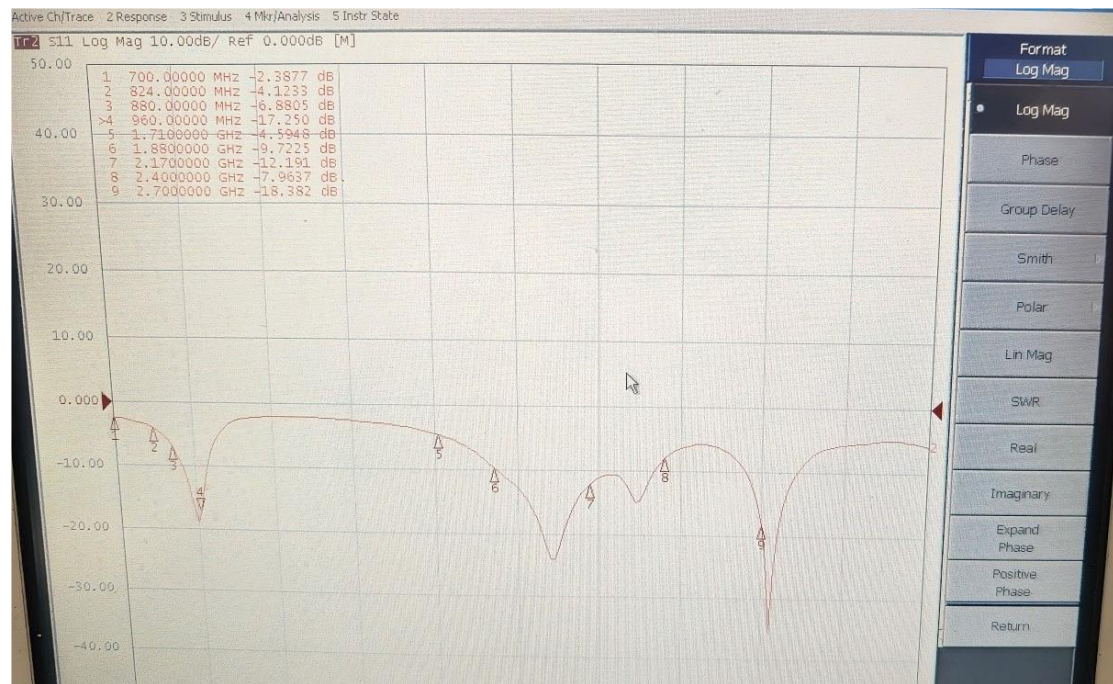
WCDMA 4/ LTE B4:-1dbi;  
LTE B7:-1dbi;  
LTE B12:-5dbi;  
LTE B17:-5dbi;  
LTE B28:-5dbi;  
LTE B66:-2dbi;  
LTE B38:-1dbi;

## 2.DIV Antenna

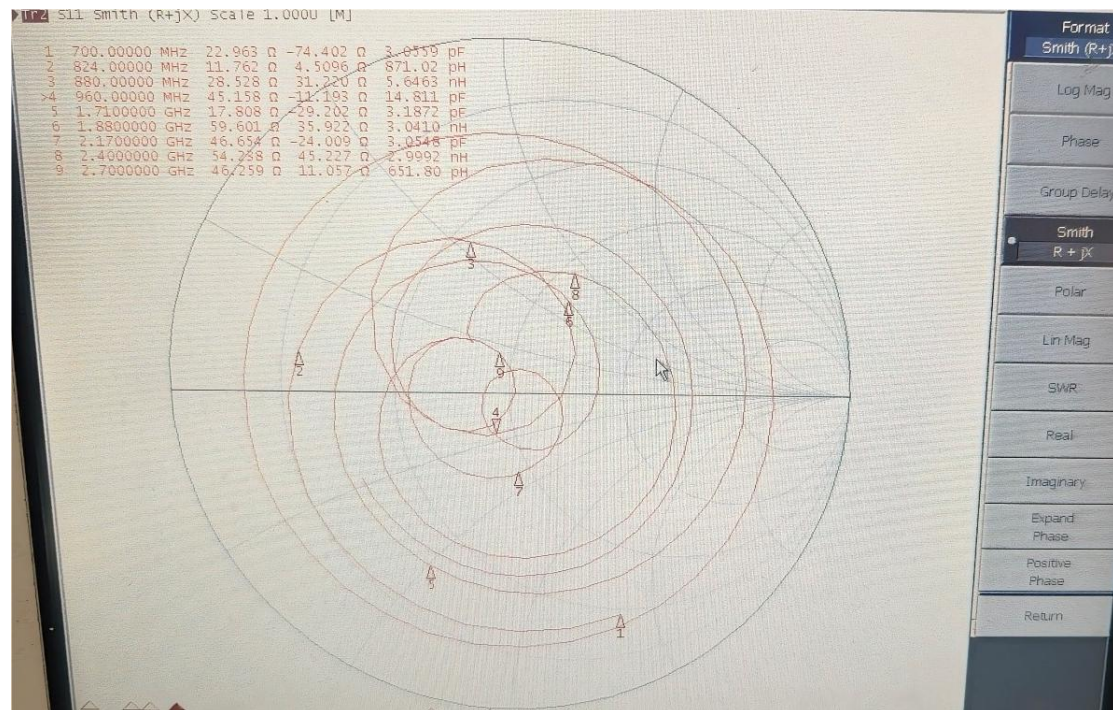
VSWR:



RL:



SMITH:



Max gain of div antenna:

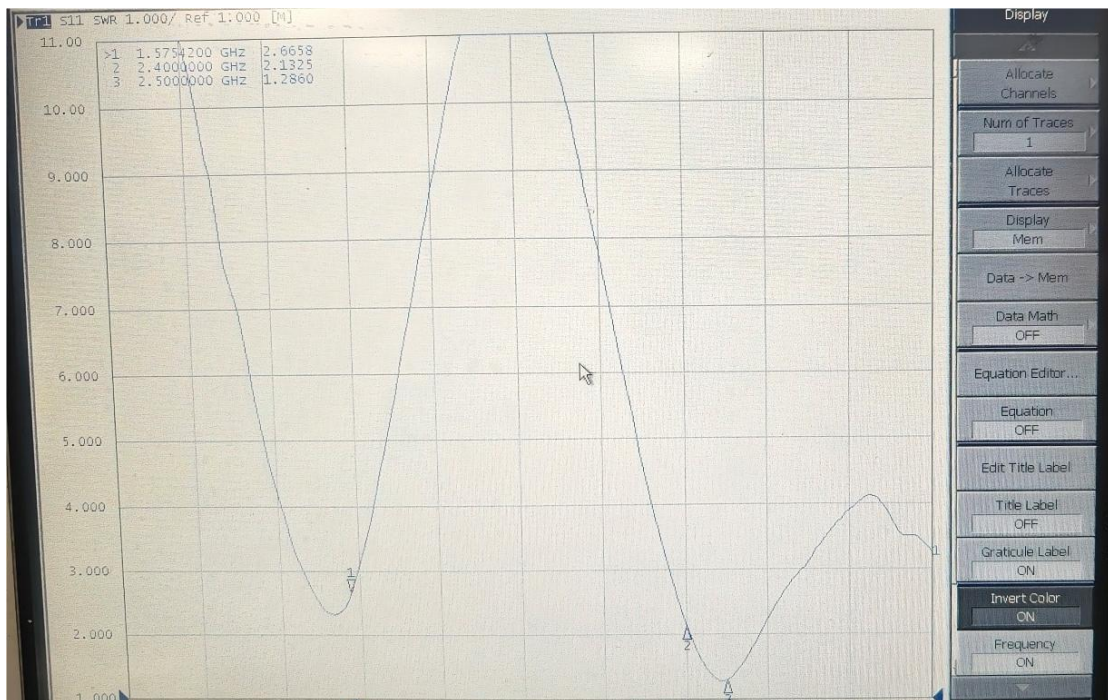
WCDMA 2/ LTE B2:-4dbi;

WCDMA 4/ LTE B4:-4dbi;

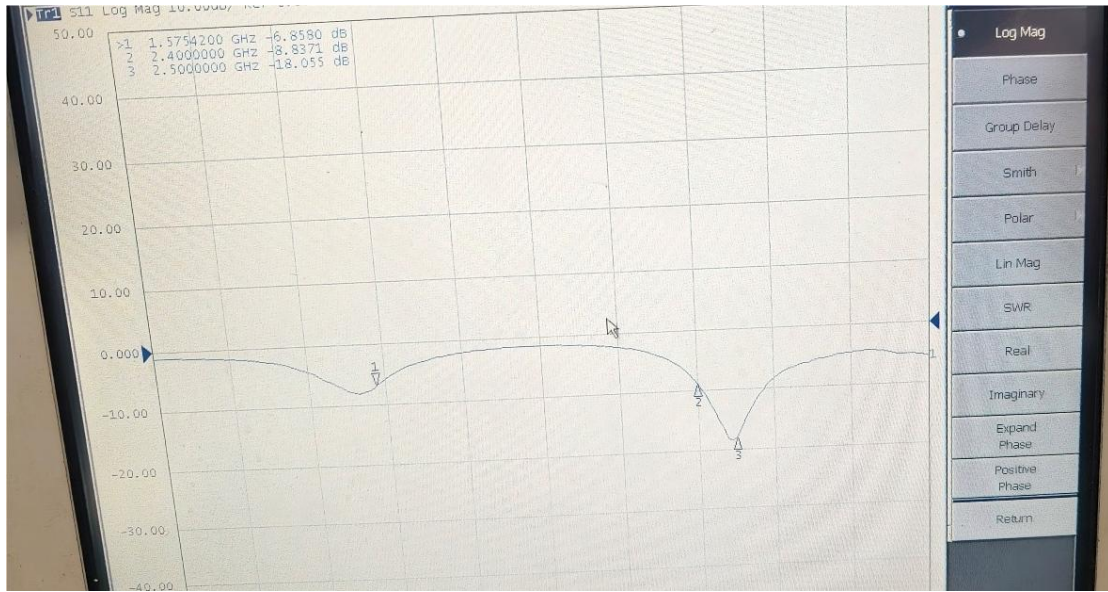
WCDMA B5/ LTE B5: -5dbi;  
WCDMA B8:-5dbi;  
LTE B12:-5dbi;  
LTE B17:-5dbi;  
LTE B28:-5dbi;  
LTE B66:-4dbi;  
WCDMA B1/ LTE B1:-4dbi;  
LTE B3:-4 dbi;  
LTE B7:-1dbi; LTE B38:-1 dbi ;

### 3.GPS/BT/WIFI Antenna

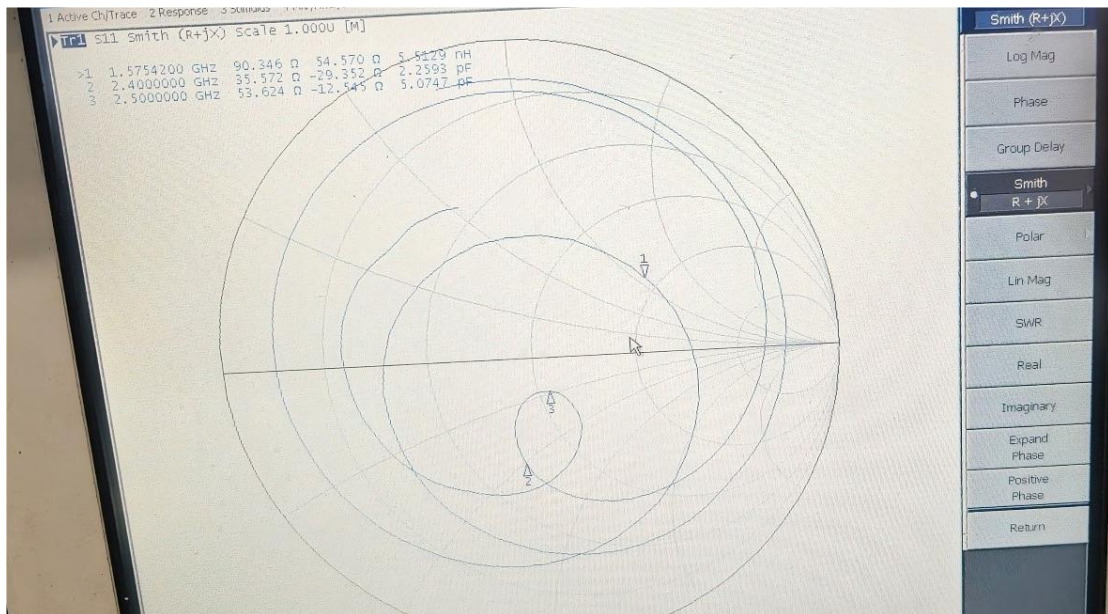
VSWR:



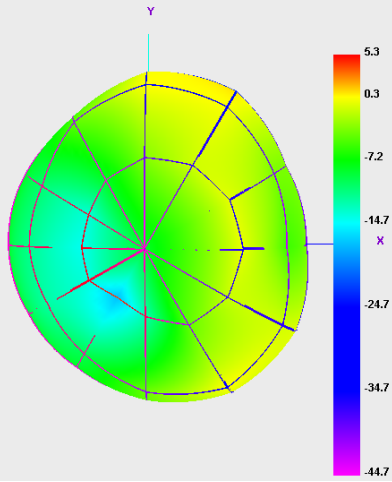
RL:



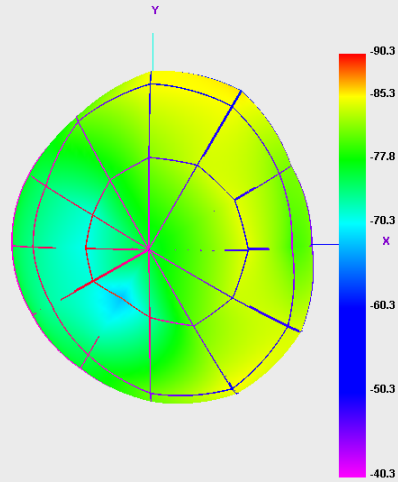
SMITH:



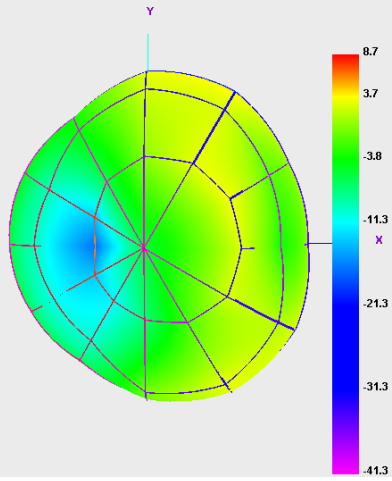
Bluetooth 0 TRP



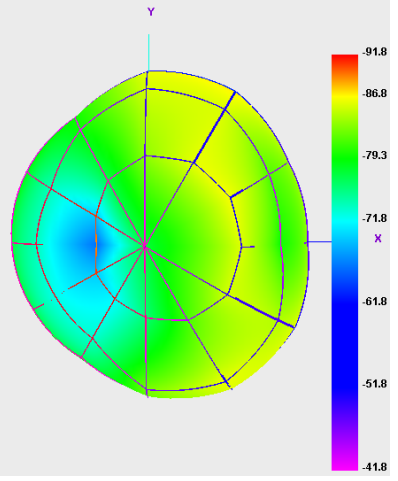
Bluetooth 0 TIS



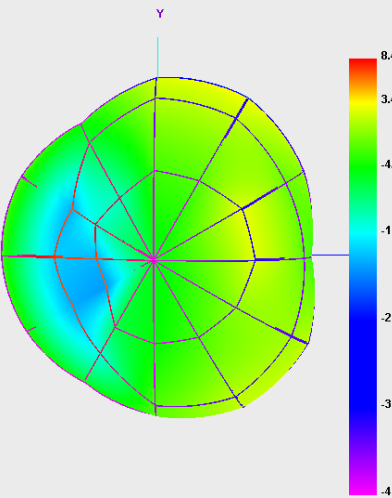
Bluetooth 39 TRP



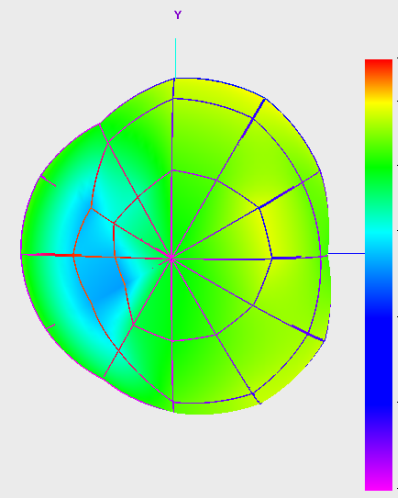
Bluetooth 39 TIS

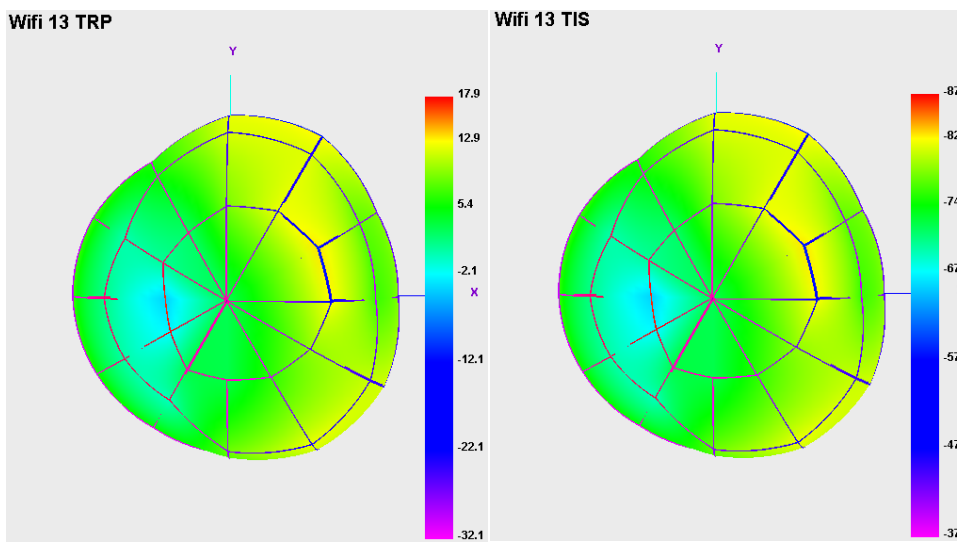
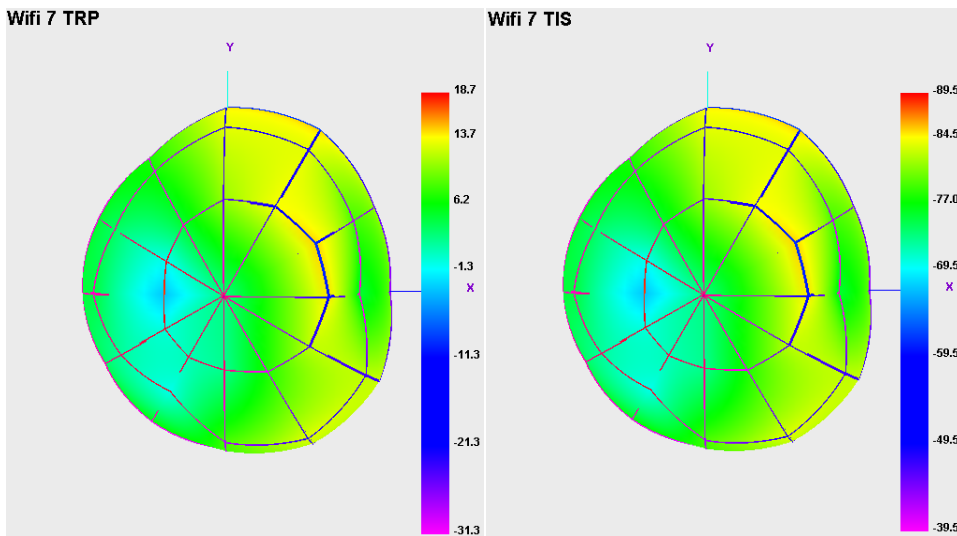
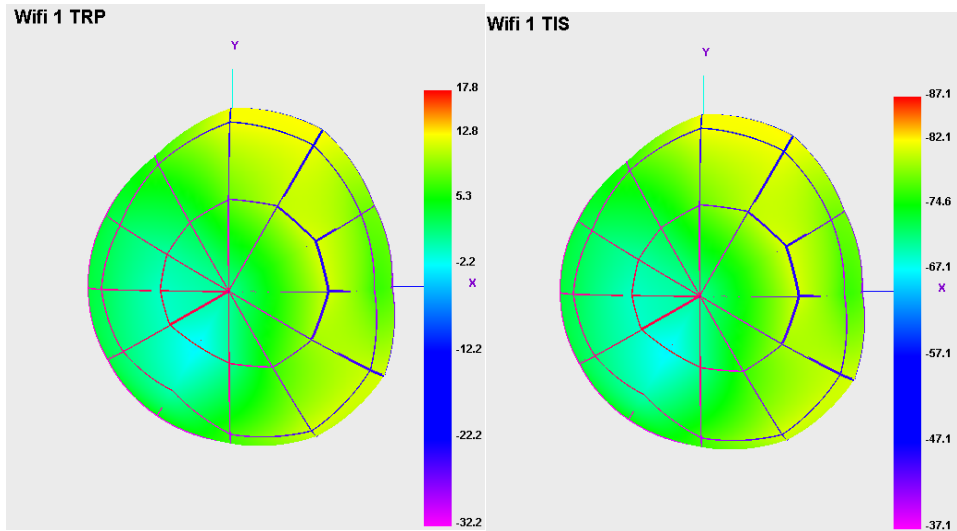


Bluetooth 78 TRP



Bluetooth 78 TIS





MAX gain about GPS/BT/WIFI antenna:

BT/2.4GWIFI: -2dBi;

GPS (1.57542Ghz) : -0.6dBi;



