

ANWEI communication Equipment Co.,Ltd

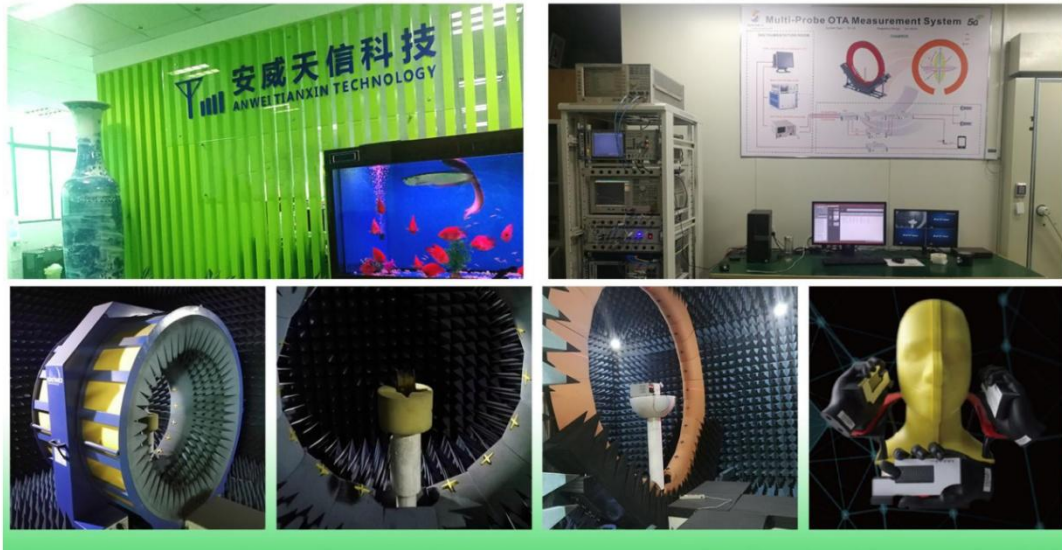
APPROVAL SHEET

Customer	Youmi	Specs	L65B
Part Number		Frequency Band	G4P+W1/2/4/5/8+FDD1/2/3/4/5/7/8/12/17/28 A/B
Color	Black	Edition	REV:A
Salesperson	Mr.Xie	Design	Lei Yao Bo
Structure	QIN YUN LIN	Confirm	
Date	2022/9/7	Signing Date	

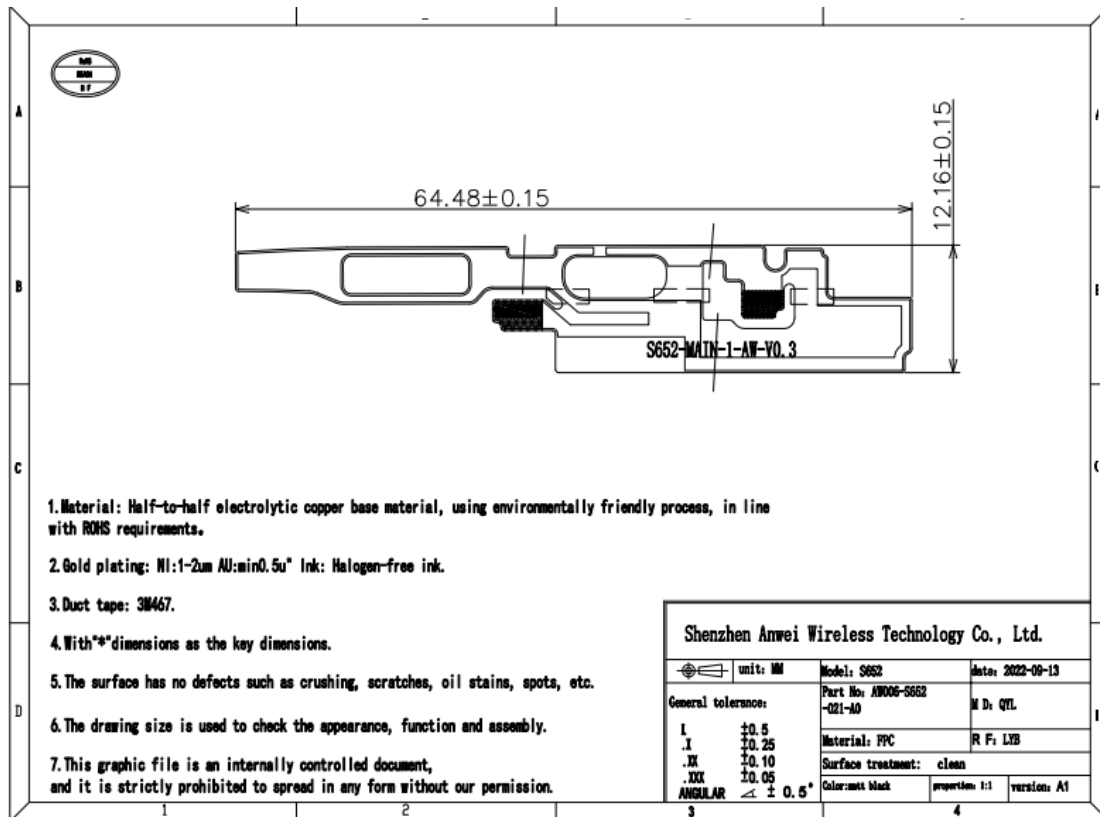
Customer confirmation:

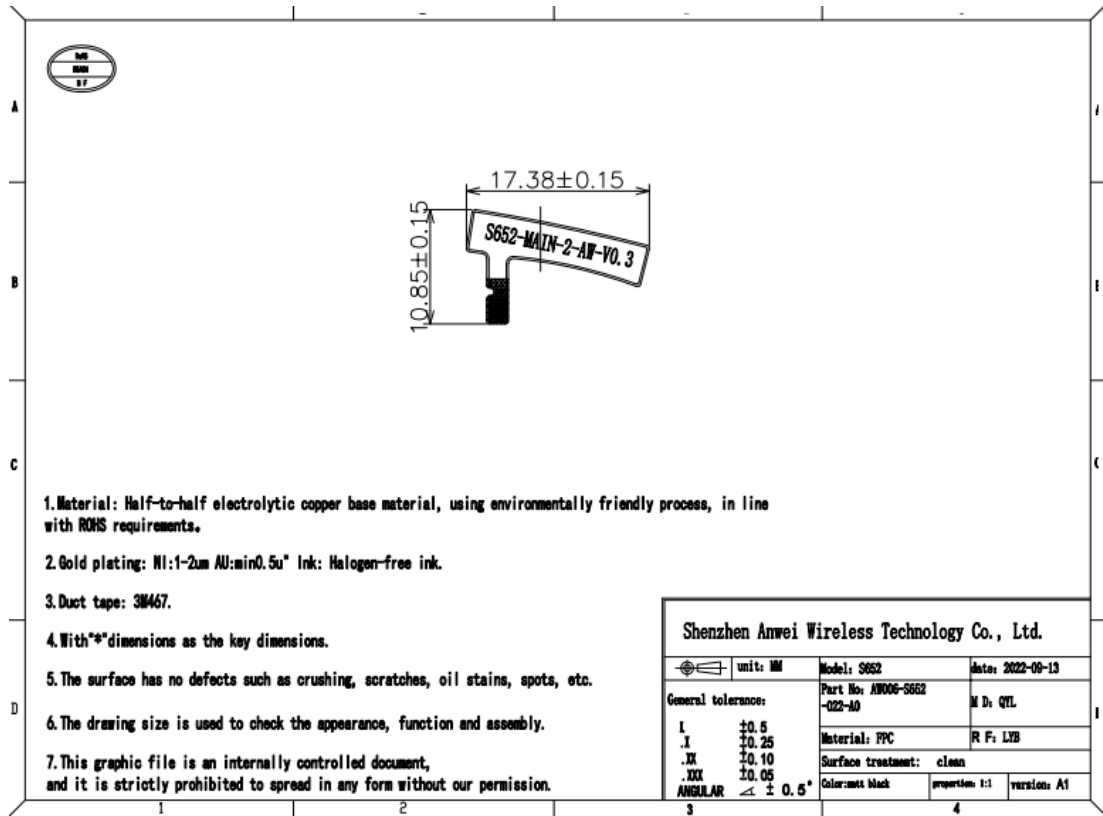
Join hands to create the future

Project development environment



(MIMOantenna 0)

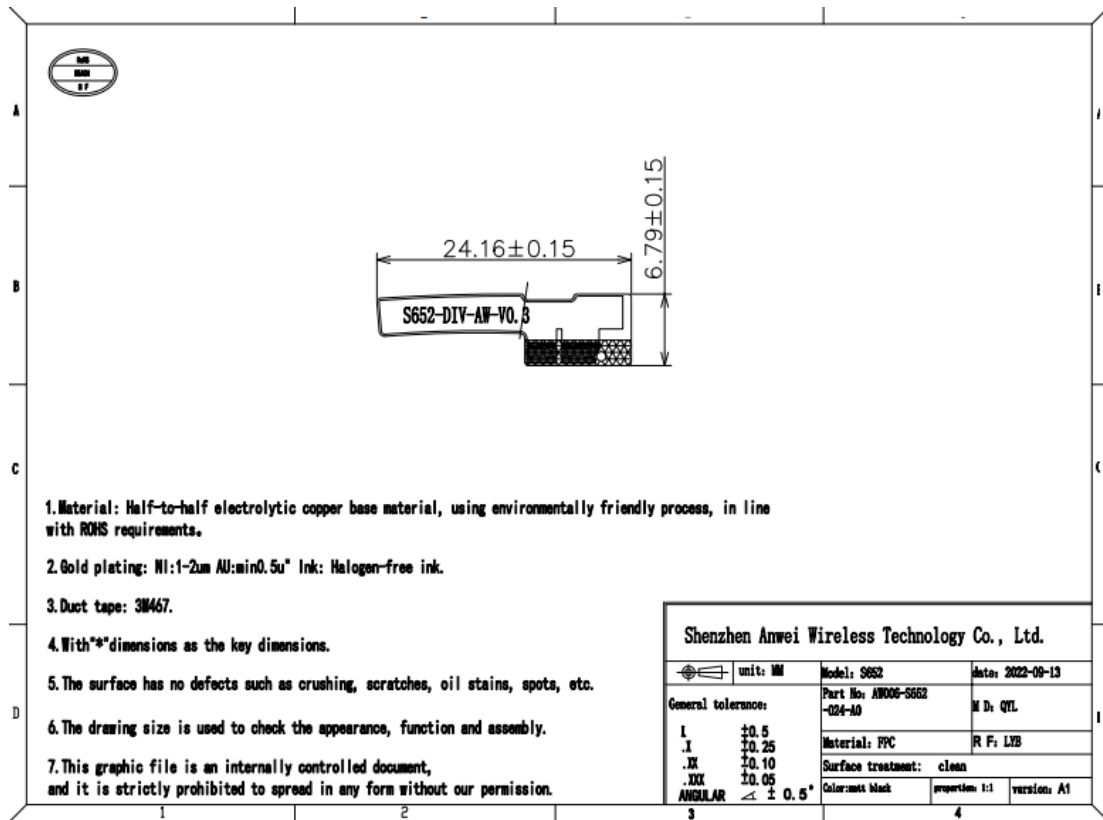




(Working frequency band): 700MHZ~2690MHZ GSM850/900 /1800/1900
WCDMA1/2/4/5/8
FDD1/2/3/4/5/7/8/12/17/28A/B

(MIMOantenna 1)

(Working frequency band): 1700MHZ~2700MHZ

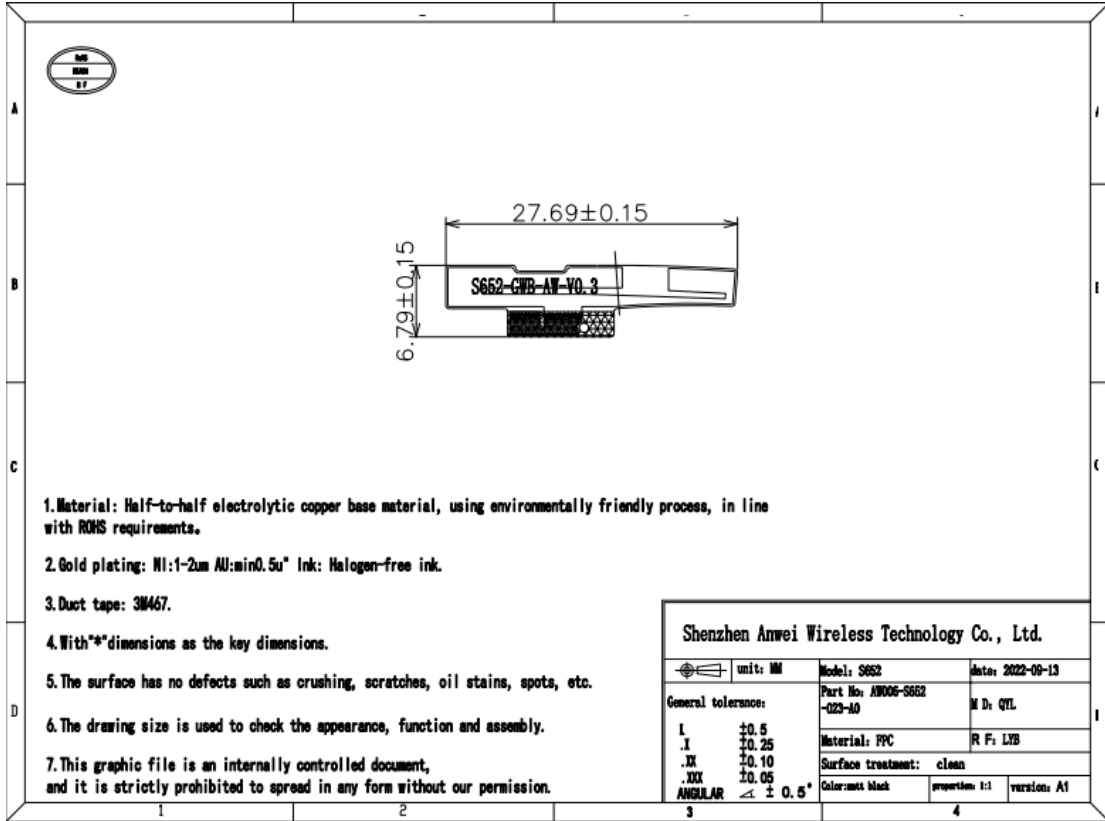


The customer brought their own matching, which was not changed

(Working frequency band of GPS antenna) : 1559MHZ~1616MHZ

(Working frequency band of 5GWIFI antenna) : 5150MHZ~5850MHZ

(2.4GWIFI antenna) (Working frequency band of 5GWIFI antenna) : 2400MHZ~2500MH



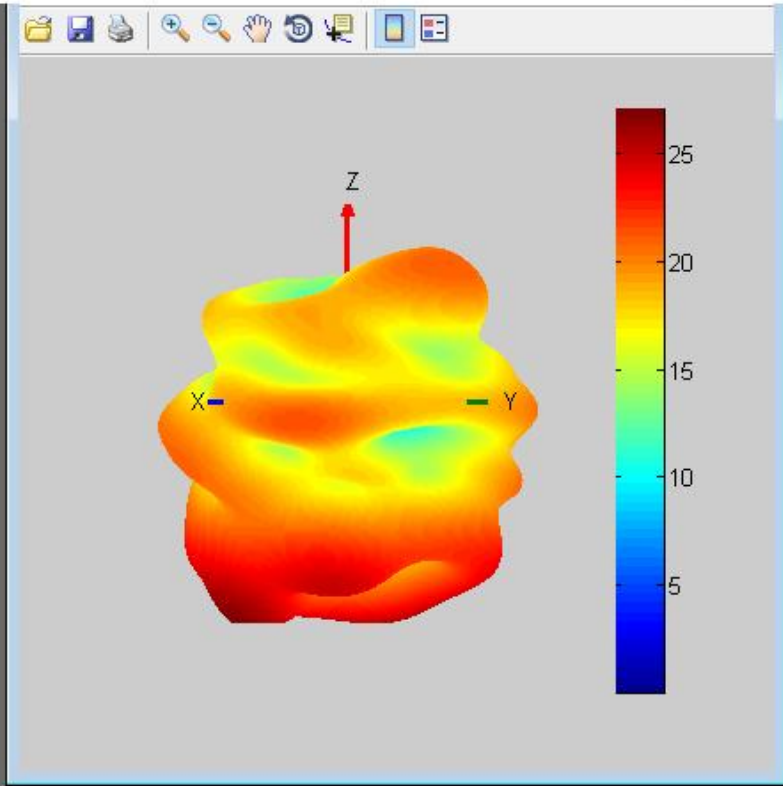
ANWEI ANT TRP&TIS parameter Summary of L65B

	Channel	TRP (dBm)	TIS (dBm)		Channel	TRP (dBm)	TIS (dBm)		Channel	TRP (dBm)	TIS (dBm)
FDD B1	18050	18.15	-92.4	FDD B17	23780	16.67	-91.8	W 1	9612	17.39	-104.2
	18300	17.32	-91.8		23790	16.8	-91.3		9750	16.67	-103.6
	18550	17.77	-91.5		23800	16.41	-90.6		9888	17.06	-103.28
FDD B2	18650	15.64	-92.2	FDD B28A	27260	16.85	-91.1	W 2	9262	16.75	-106.2
	18900	16.01	-91.8		27370	16.8	-90.5		9400	16.94	-105.7
	19150	16.86	-91.6		27469	16.67	-90.1		9538	16.86	-105.53
FDD B3	19250	18.57	-92.5	FDD B28B	27410	16.63	-90.2	W 4	1312	16.85	-103.2
	19575	18.07	-92.1		27510	16.67	-89.6		1413	17.27	-102.6
	19900	17.51	-91.5		27600	17.46	-89.53		1513	16.97	-102.32
FDD B4	20000	18.58	-91.7	GSM 850	128	26.62	-102.2	W 5	4132	16.37	-103.1
	20175	18.23	-91.9		190	26.79	-101.5		4183	17.43	-102.7
	20350	18.01	-91.4		251	27.69	-101.1		4233	17.23	-102.36
FDD B5	20450	16.65	-91.0	GSM 900	1	25.74	-102.8	W 8	2712	16.04	-101.6
	20525	17.84	-90.3		62	25.63	-102.3		2787	15.49	-101.2
	20600	17.82	-89.94		124	26.43	-101.83		2863	16.09	-100.59
FDD B7	20800	15.62	-91.3	DCS 1800	512	25.73	-104.4				
	21100	15.89	-91.6		698	25.28	-104.0				
	21400	15.48	-91.2		885	25.62	-103.71				
FDD B8	21500	16.03	-90.3	PCS 1900	512	24.05	-104.6				
	21625	16.19	-90.2		661	23.79	-104.2				
	21750	17.14	-89.7		810	24.07	-103.95				
FDD B12	23060	16.45	-91.6								
	23095	16.22	-90.8								
	23130	16.44	-90.49								

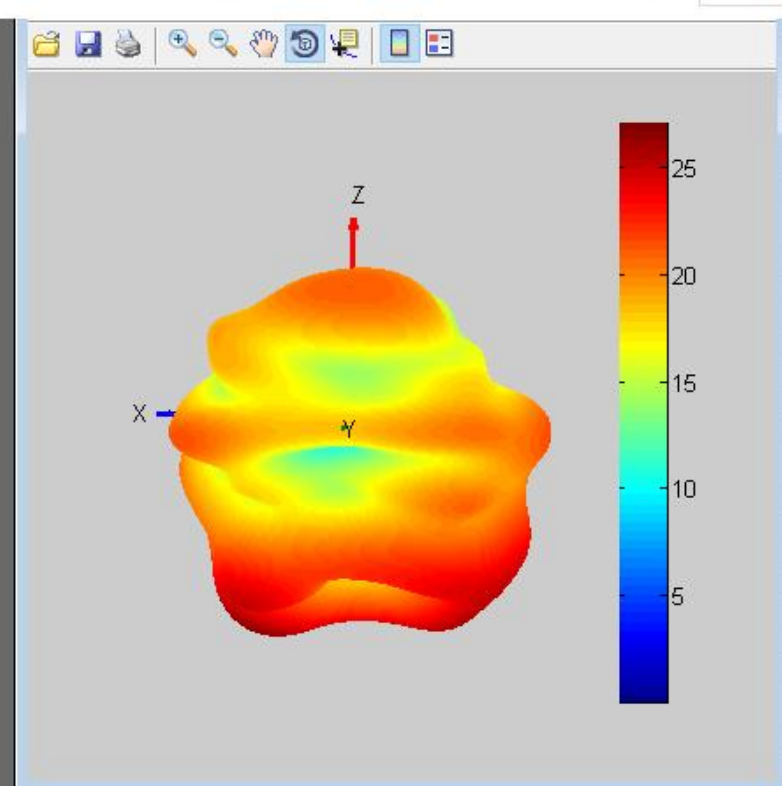
(GPS Test)

BT @ 2.4GWIFI

2400 ▾ Et ▾ Show3D Antenna Type Normal ▾ Selectgain gain - effi-C rotated 90

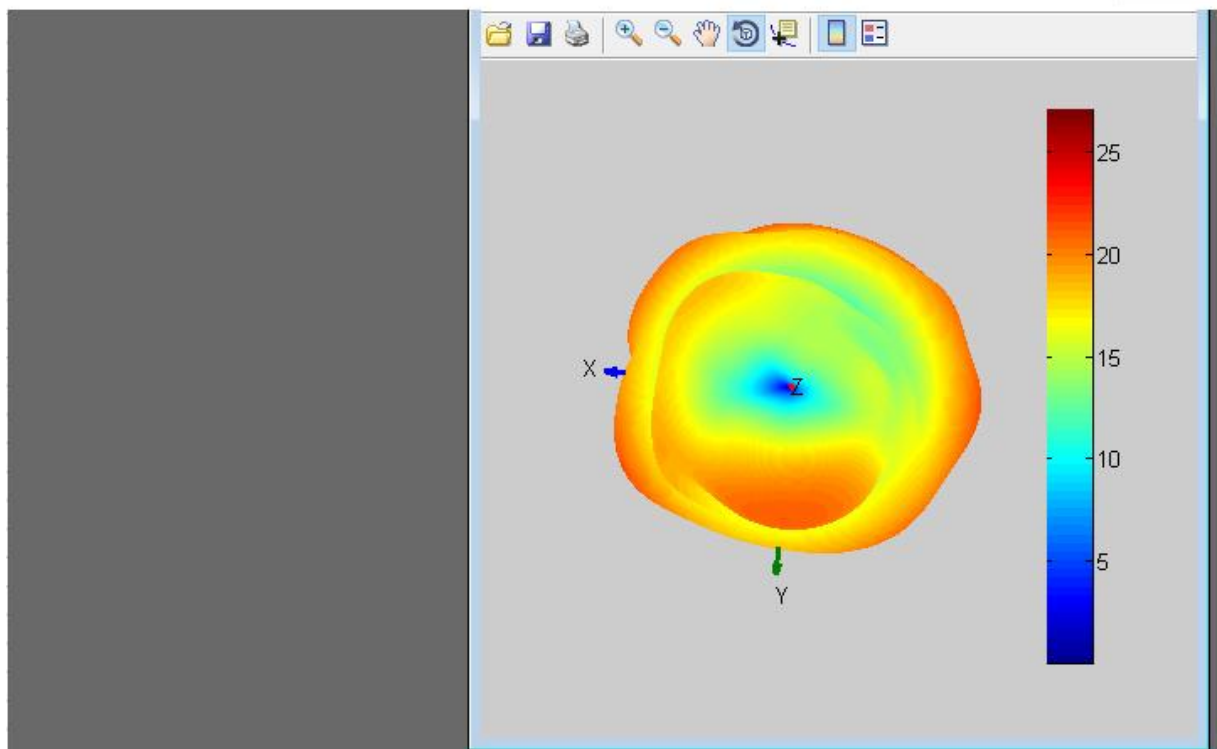


2400 ▾ Et ▾ Show3D Antenna Type Normal ▾ Selectgain gain - effi-C rotated 90

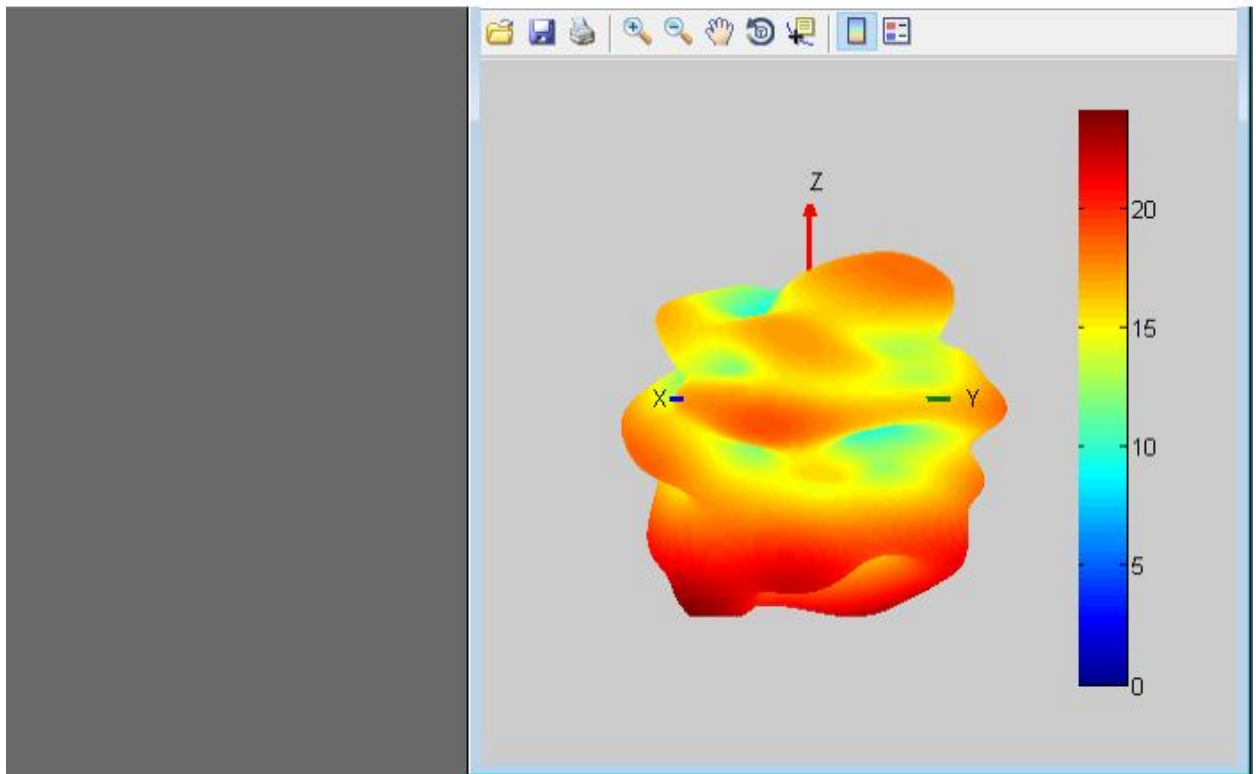


BT @ 2.4GWIFI

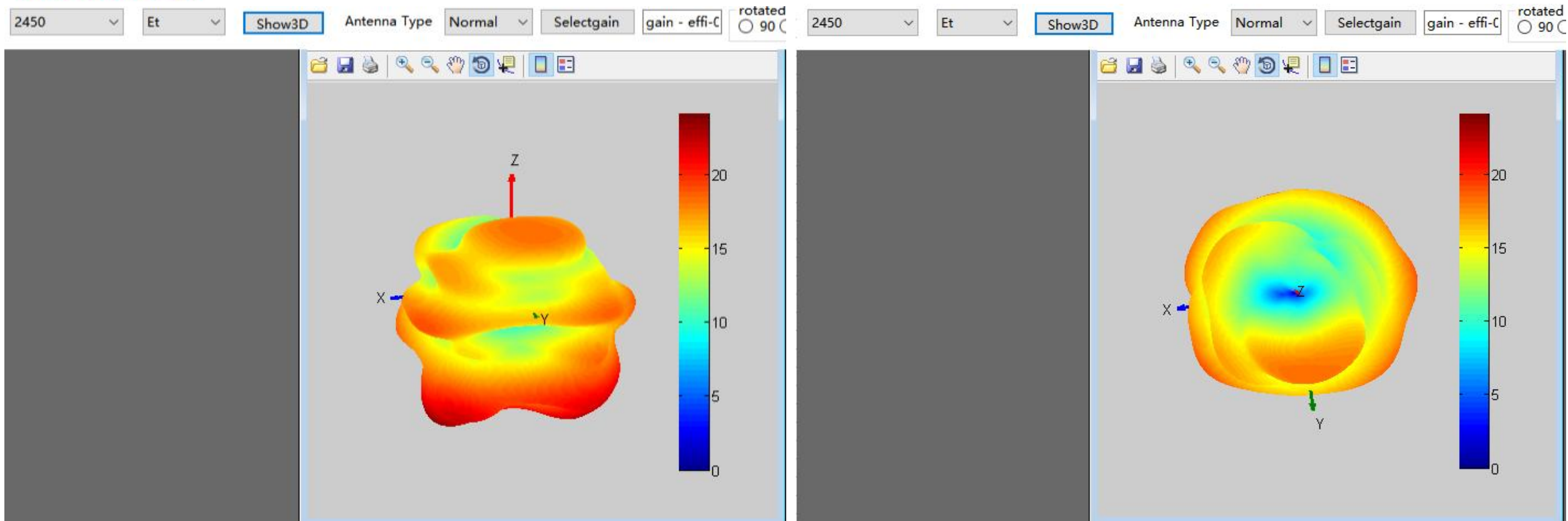
2400 ▾ Et ▾ Show3D Antenna Type Normal ▾ Selectgain gain - effi-C rotated 90 C



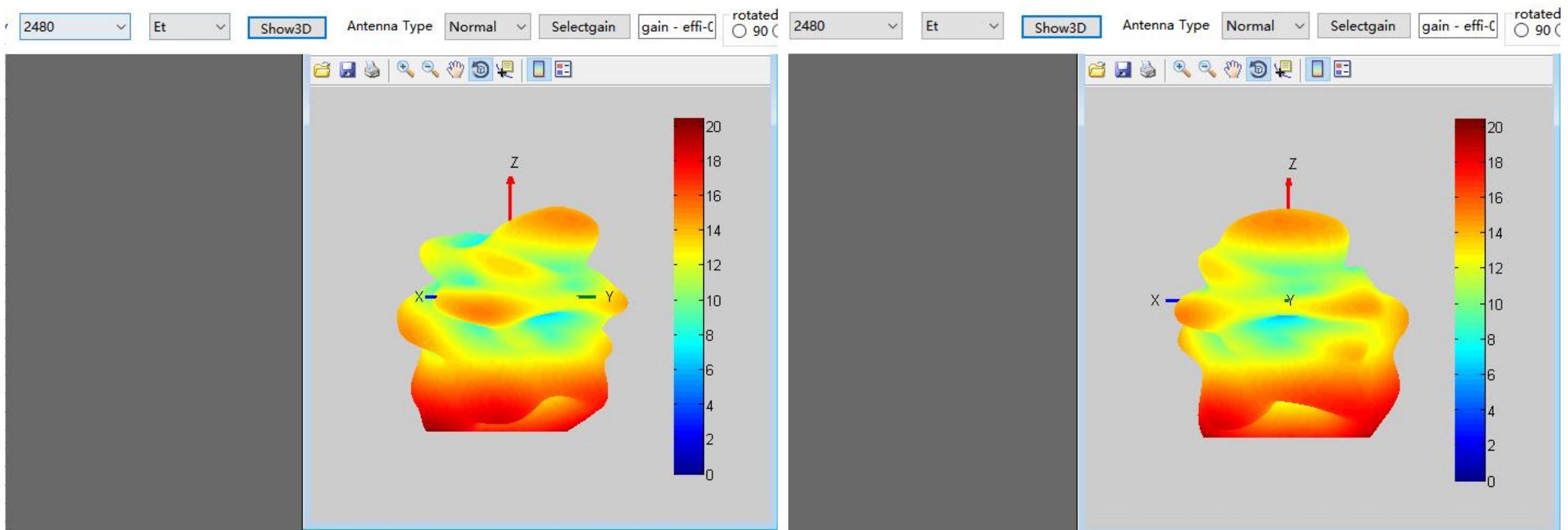
2450 ▾ Et ▾ Show3D Antenna Type Normal ▾ Selectgain gain - effi-C rotated 90 C



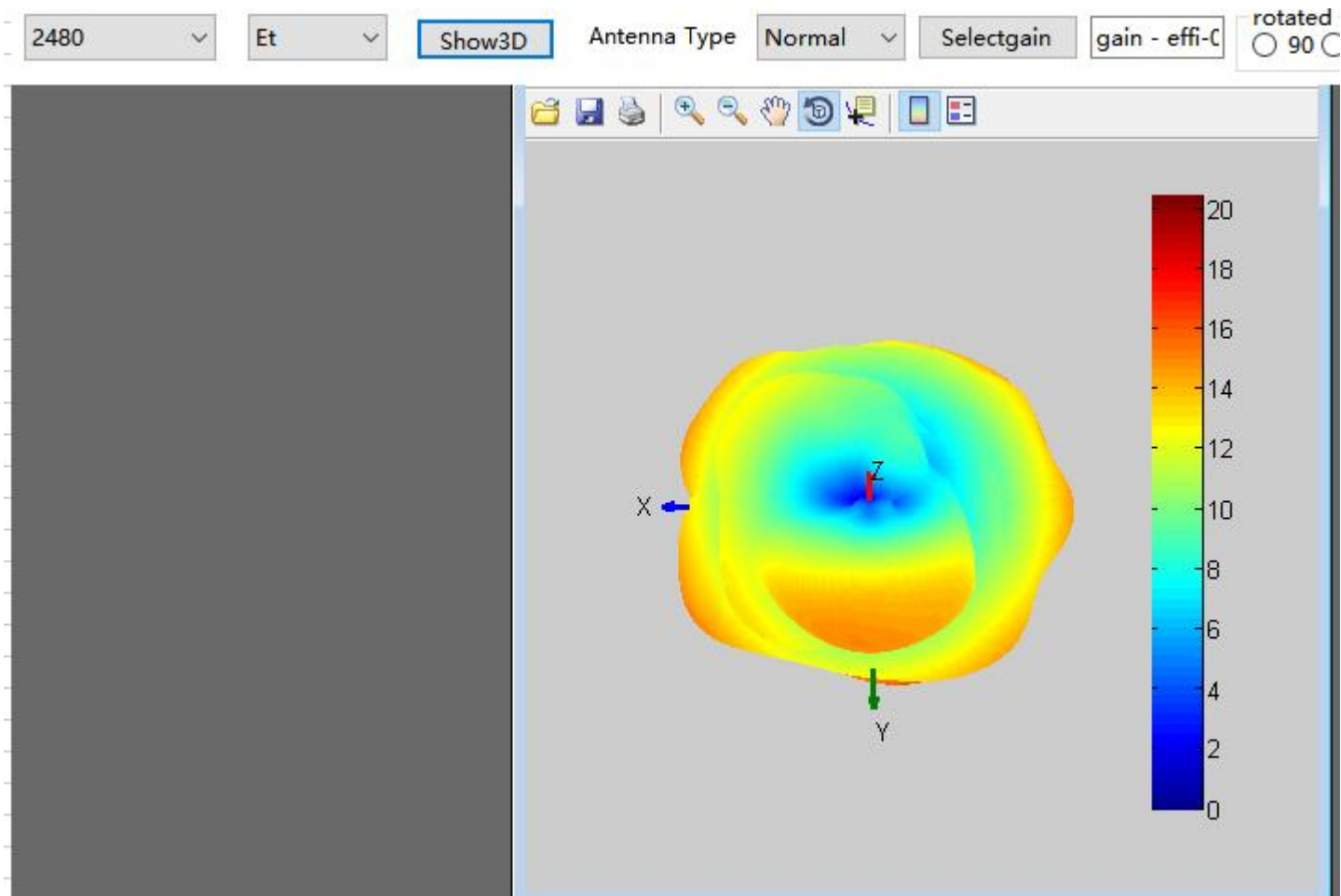
BT @ 2.4GWIFI



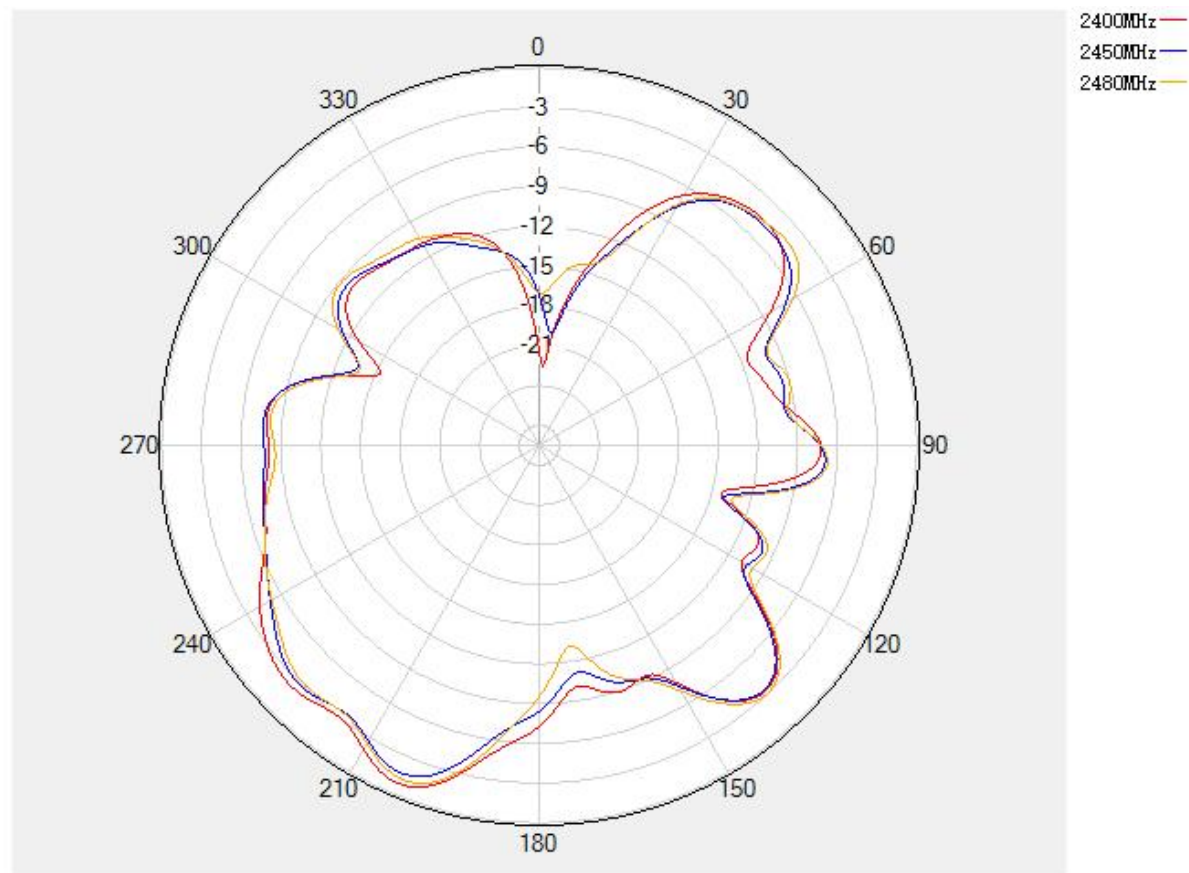
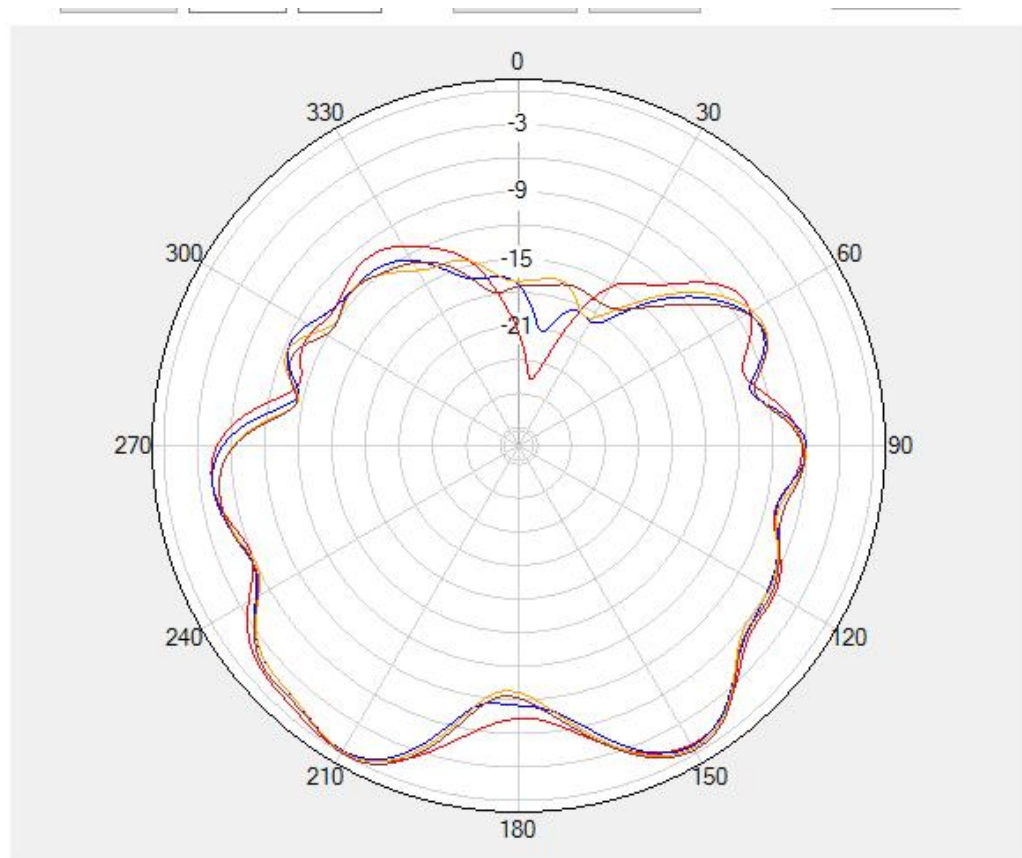
BT @ 2.4GWIFI

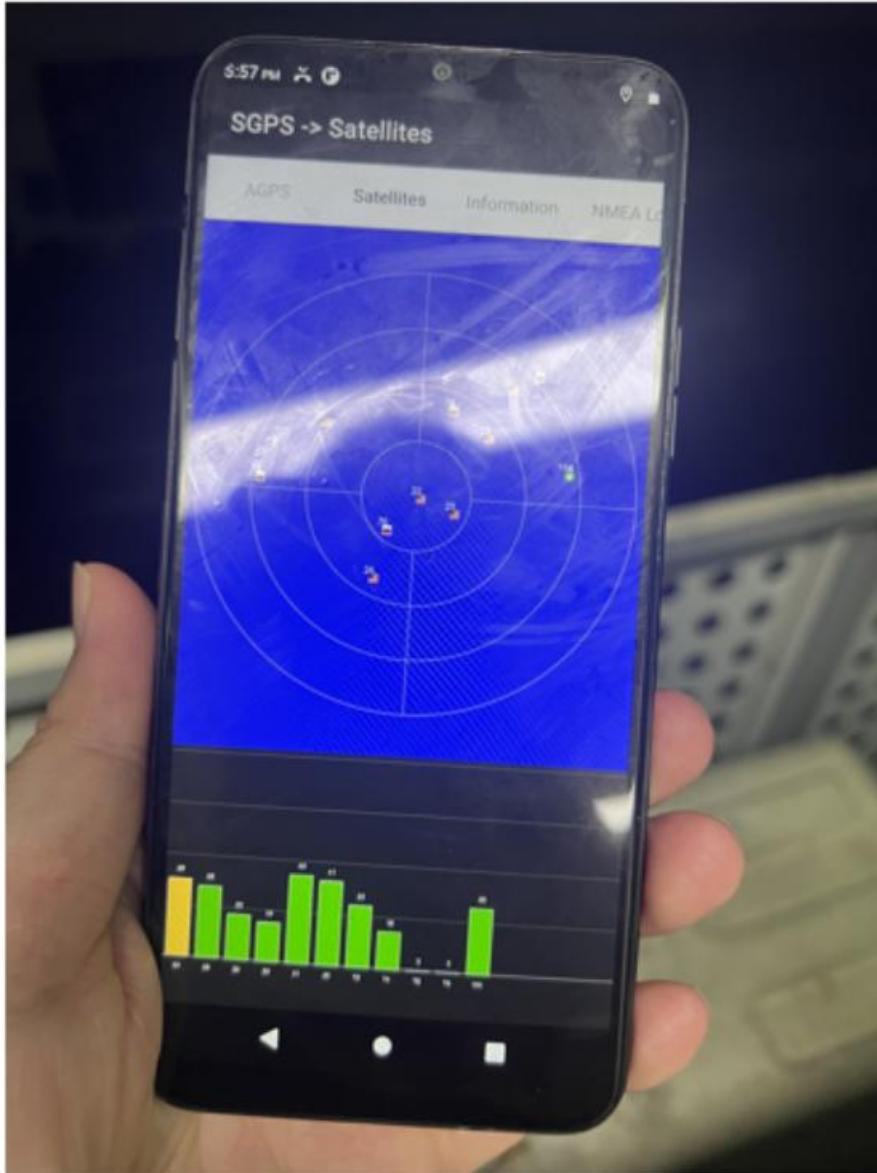


BT @ 2.4GWIFI



BT @ 2.4GWIFI





(Antenna gain)

Standard	Band	Frequency	Gain(dbi)
FDD_LTE	FDD_B1	1925	0.95
FDD_LTE	FDD_B2	1855	-0.34
FDD_LTE	FDD_B3	1715	0.64
FDD_LTE	FDD_B4	1715	-0.33
FDD_LTE	FDD_B5	829	-1.15
FDD_LTE	FDD_B7	2505	-0.34
FDD_LTE	FDD_B12	704	-0.65
FDD_LTE	FDD_B17	709	-0.67
FDD_LTE	FDD_B28	723	-1.85
FDD_LTE	FDD_B28	723	-1.85
WCDMA	WCDMA_B1	1922.4	0.95
WCDMA	WCDMA_B2	1852.4	-0.34
WCDMA	WCDMA_B4	1715	-0.33
WCDMA	WCDMA_B5	826.4	-0.51
WCDMA	WCDMA_B8	882.4	-0.83
GSM	GSM850	824.2	-0.51
GSM	GSM900	890.2	-0.83
GSM	PCS1900	1850.2	-0.34
GSM	DCS1800	1710.2	-0.63
2.4GWIFI		2412	-0.13
GPS		1575	-0.13
BT		2400	-0.13