

4.1

ACCESSORIES: QUICK GUIDE / USER MANUAL



QUICK GUIDE



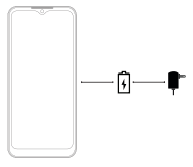
USER MANUAL

62 mm

Thank you for purchasing this innovative LOGIC device. The specifications in this document are subject to change without prior notice.

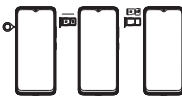
LOGIC and the LOGIC logo are registered trademarks of Swagtek, Inc. Other trademarks are the property of their respective owners.

Charge for 24 hours before using.

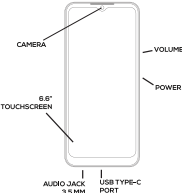


6

Install SIM card / memory card.



Get to know your Logic phone.

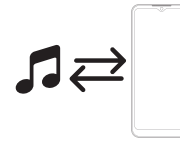


5

Connect your Logic phone to the computer using the USB cable.



Copy music files from your computer to your Logic phone.



4

FCC Statement

This device complies with Part 15 of the FCC Rules. Operation is subject to the following two conditions: (1) This device may not cause harmful interference. (2) This device must accept any interference received, including interference that may cause undesired operation. Changes or modifications not expressly approved by the party responsible for compliance could void the user's authority to operate the equipment. This equipment has been tested and found to comply with the limits for a Class B digital device, pursuant to Part 15 of the FCC Rules. These limits are designed to provide reasonable protection against harmful interference in a residential environment. The equipment generates and can receive radio frequency energy and, if not used and installed in accordance with the instructions, may cause harmful interference to radio communications. However, there is no guarantee that interference will not occur in a particular installation. If the equipment does cause harmful interference to radio or television reception, which can be determined by turning the equipment off and on, the user is encouraged to try to correct the interference by one or more of the following measures: • Reorient or relocate the receiving antenna. • Increase the separation between the equipment and receiver. • Connect the equipment into an outlet on a circuit different from that to which the receiver is connected. • Consult the dealer or an experienced radio/TV technician for help.

SAR Information Statement

This wireless phone is a radio transmitter and receiver. It is designed and manufactured not to exceed the emission limits for exposure to radiofrequency (RF) energy set by the Federal Communications Commission of the US Government. These limits are part of comprehensive guidelines and standards governing the RF energy for the general population. The guidelines are based on standards that were developed by independent scientific organizations through periodic and thorough evaluation of scientific studies. The standards are based on substantial safety margins designed to assure the safety of all persons, regardless of age and health. The exposure standard for wireless mobile phones, as well as a set of measurement known as the Specific Absorption Rate, or SAR. The SAR limit set by the FCC is 1.6 Watts/kg. Tests for SAR are conducted with the phone transmitting at its highest certified power level in its authorized frequency bands. Although the SAR is measured at the highest certified power level, the actual SAR level of the phone will vary depending on the actual use of the phone. This is because the phone is designed to operate at multiple power levels to use only the power required to reach the receiver. In general, the closer you are to a wireless station, the more power the phone must use to talk to the station. The SAR tests are performed in positions and locations (e.g., at the ear and away from the body) as required by the FCC for each model. The highest SAR value for this model phone when tested for use at the ear is 0.26W/kg and when worn on the body, as described in the user guide.

A 0.40W/kg (1.6W/kg) SAR measurement was taken during phone mode, depending upon available accessories and FCC requirements. The maximum SAR in handset mode is 0.40W/kg. There may be differences between the SAR level of various phones and/or various positions they are used. The government requirement for safe exposure to RF energy is 1.6W/kg. The FCC has granted an Equipment Authorization for this model phone with a recorded SAR level calculated as in compliance with the FCC. For more information on this model phone, visit the FCC website at <http://www.fcc.gov>. Additional information on Specific Absorption Rate (SAR) can be found on the FCC website at <http://www.fcc.gov>. In the United States and Canada, the SAR limit for mobile phones used by the public is 1.6 Watts/kg (averaged over one gram of tissue). The standard incorporates a substantial margin of safety to give additional protection for the public and to account for any variations in measurement.

Body-worn Operation
This device was tested for typical body-worn operations. To comply with RF exposure requirements, a minimum separation distance of 15mm must be maintained between the user's body and the handset, including the antenna. This may include the phone and longer accessories used by this device should not contain any metal components. Body-worn operations that do not meet these requirements may not comply with RF exposure requirements and should be avoided. Use only the handset or an approved antenna.



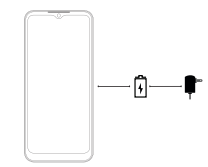
QUICK GUIDE | GUÍA RÁPIDA

1

Gracias por haber adquirido este innovador producto de LOGIC. Las especificaciones en este manual están sujetas a cambios sin previo aviso.

LOGIC y el logotipo de LOGIC son marcas registradas de Swagtek, Inc. El resto de las marcas comerciales son propiedad de sus respectivos dueños.

Cargue por 24 horas antes de usar.

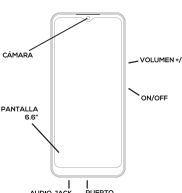


6

Instalar tarjeta SIM / tarjeta de memoria.



Conozca su teléfono Logic.



5

Conecte su teléfono Logic a una computadora utilizando el cable USB.



Transfiera sus archivos de música desde su computadora a su teléfono Logic.



4

FCC Statement

This device complies with Part 15 of the FCC Rules. Operation is subject to the following two conditions: (1) This device may not cause harmful interference. (2) This device must accept any interference received, including interference that may cause undesired operation. Changes or modifications not expressly approved by the party responsible for compliance could void the user's authority to operate the equipment. This equipment has been tested and found to comply with the limits for a Class B digital device, pursuant to Part 15 of the FCC Rules. These limits are designed to provide reasonable protection against harmful interference in a residential environment. The equipment generates and can receive radio frequency energy and, if not used and installed in accordance with the instructions, may cause harmful interference to radio communications. However, there is no guarantee that interference will not occur in a particular installation. If the equipment does cause harmful interference to radio or television reception, which can be determined by turning the equipment off and on, the user is encouraged to try to correct the interference by one or more of the following measures: • Reorient or relocate the receiving antenna. • Increase the separation between the equipment and receiver. • Connect the equipment into an outlet on a circuit different from that to which the receiver is connected. • Consult the dealer or an experienced radio/TV technician for help.

SAR Information Statement

This wireless phone is a radio transmitter and receiver. It is designed and manufactured not to exceed the emission limits for exposure to radiofrequency (RF) energy set by the Federal Communications Commission of the US Government. These limits are part of comprehensive guidelines and standards governing the RF energy for the general population. The guidelines are based on standards that were developed by independent scientific organizations through periodic and thorough evaluation of scientific studies. The standards are based on substantial safety margins designed to assure the safety of all persons, regardless of age and health. The exposure standard for wireless mobile phones, as well as a set of measurement known as the Specific Absorption Rate, or SAR. The SAR limit set by the FCC is 1.6 Watts/kg. Tests for SAR are conducted with the phone transmitting at its highest certified power level in its authorized frequency bands. Although the SAR is measured at the highest certified power level, the actual SAR level of the phone will vary depending on the actual use of the phone. This is because the phone is designed to operate at multiple power levels to use only the power required to reach the receiver. In general, the closer you are to a wireless station, the more power the phone must use to talk to the station. The SAR tests are performed in positions and locations (e.g., at the ear and away from the body) as required by the FCC for each model. The highest SAR value for this model phone when tested for use at the ear is 0.26W/kg and when worn on the body, as described in the user guide.

A 0.40W/kg (1.6W/kg) SAR measurement was taken during phone mode, depending upon available accessories and FCC requirements. The maximum SAR in handset mode is 0.40W/kg. There may be differences between the SAR level of various phones and/or various positions they are used. The government requirement for safe exposure to RF energy is 1.6W/kg. The FCC has granted an Equipment Authorization for this model phone with a recorded SAR level calculated as in compliance with the FCC. For more information on this model phone, visit the FCC website at <http://www.fcc.gov>. Additional information on Specific Absorption Rate (SAR) can be found on the FCC website at <http://www.fcc.gov>. In the United States and Canada, the SAR limit for mobile phones used by the public is 1.6 Watts/kg (averaged over one gram of tissue). The standard incorporates a substantial margin of safety to give additional protection for the public and to account for any variations in measurement.

Body-worn Operation
This device was tested for typical body-worn operations. To comply with RF exposure requirements, a minimum separation distance of 15mm must be maintained between the user's body and the handset, including the antenna. This may include the phone and longer accessories used by this device should not contain any metal components. Body-worn operations that do not meet these requirements may not comply with RF exposure requirements and should be avoided. Use only the handset or an approved antenna.

Body-worn Operation
This device was tested for typical body-worn operations. To comply with RF exposure requirements, a minimum separation distance of 15mm must be maintained between the user's body and the handset, including the antenna. This may include the phone and longer accessories used by this device should not contain any metal components. Body-worn operations that do not meet these requirements may not comply with RF exposure requirements and should be avoided. Use only the handset or an approved antenna.

LOGIC

Warranty Certifications Terms and Conditions

LOGIC warrants that their Products will be free from defects in material and workmanship. The warranty period is one (1) year for the products and three (3) months for the accessories. This warranty begins the date of purchase by the customer, who shall present an invoice or a purchase receipt when requesting warranty service otherwise the warranty period will begin from the date of manufacture of the product. LOGIC will repair a product without cost to the customer if it presents a manufacturing defect or defect in workmanship during the warranty period and if the defect occurred under normal conditions of use in accordance with the instructions and specifications stated in the user's manual.

Certificación de Garantía Términos y Condiciones
LOGIC garantiza que sus productos estarán libres de defectos de material y mano de obra. El período de garantía es de un (1) año para los productos y de tres (3) meses para los accesorios que forman parte del producto original. LOGIC reparará un producto, sin costo para el cliente si presenta un defecto de fabricación o un defecto de mano de obra durante el período de garantía y si el cliente presenta un producto en condiciones normales de uso de acuerdo con las instrucciones y especificaciones indicadas en el manual del usuario.

Para más detalles de la Garantía Limitada de LOGIC, y para obtener información del servicio de garantía, por favor visite la sección de soporte en nuestro sitio web logicmobility.com.
Made in China © 2016 Swagtek Inc. - USA

SHEET - FRONT SIDE

SHEET - BACK SIDE

