

# ANWEI commnuication Equipment Co.,Ltd

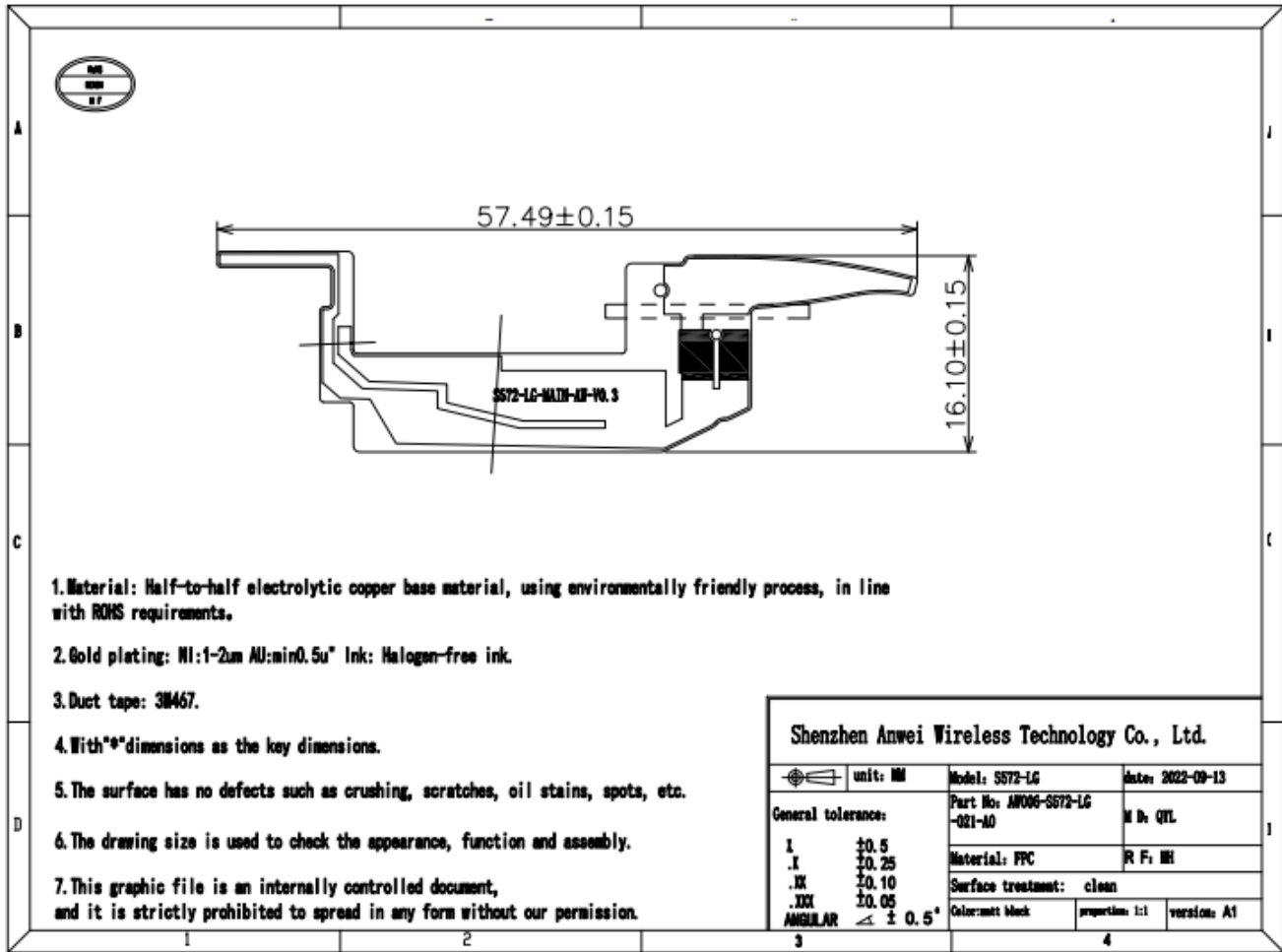
## APPROVAL SHEET

Customer		Specs	S57
Part Number		Frequency Band	G4P+W1/2/4/5/8 LTE-B1/2/3/4/5/7/8/12/17/28
Color	Greenn	Edition	REV:A
Salesperson	Mr.Xie	Design	WUXI
Structure	QIN YUN LIN	Confirm	
Date	2022/9/13	Signing Date	
客户确认 Customer confirmation:			
Join hands to create the future			

## Project development environment



(MIMOantenna 0)

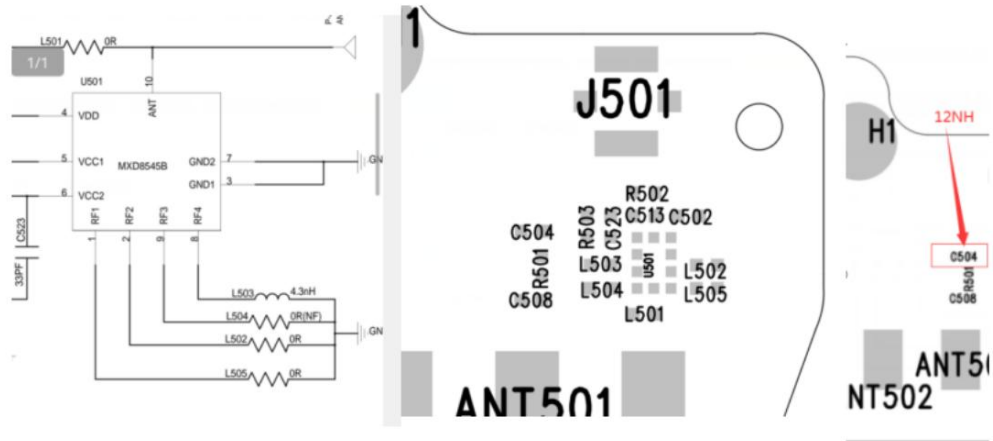


工作频段(Working frequency band): 700MHZ~960MHZ

G4P+W1/2/4/5/8

LTE-B1/2/3/4/5/7/8/12/17/28

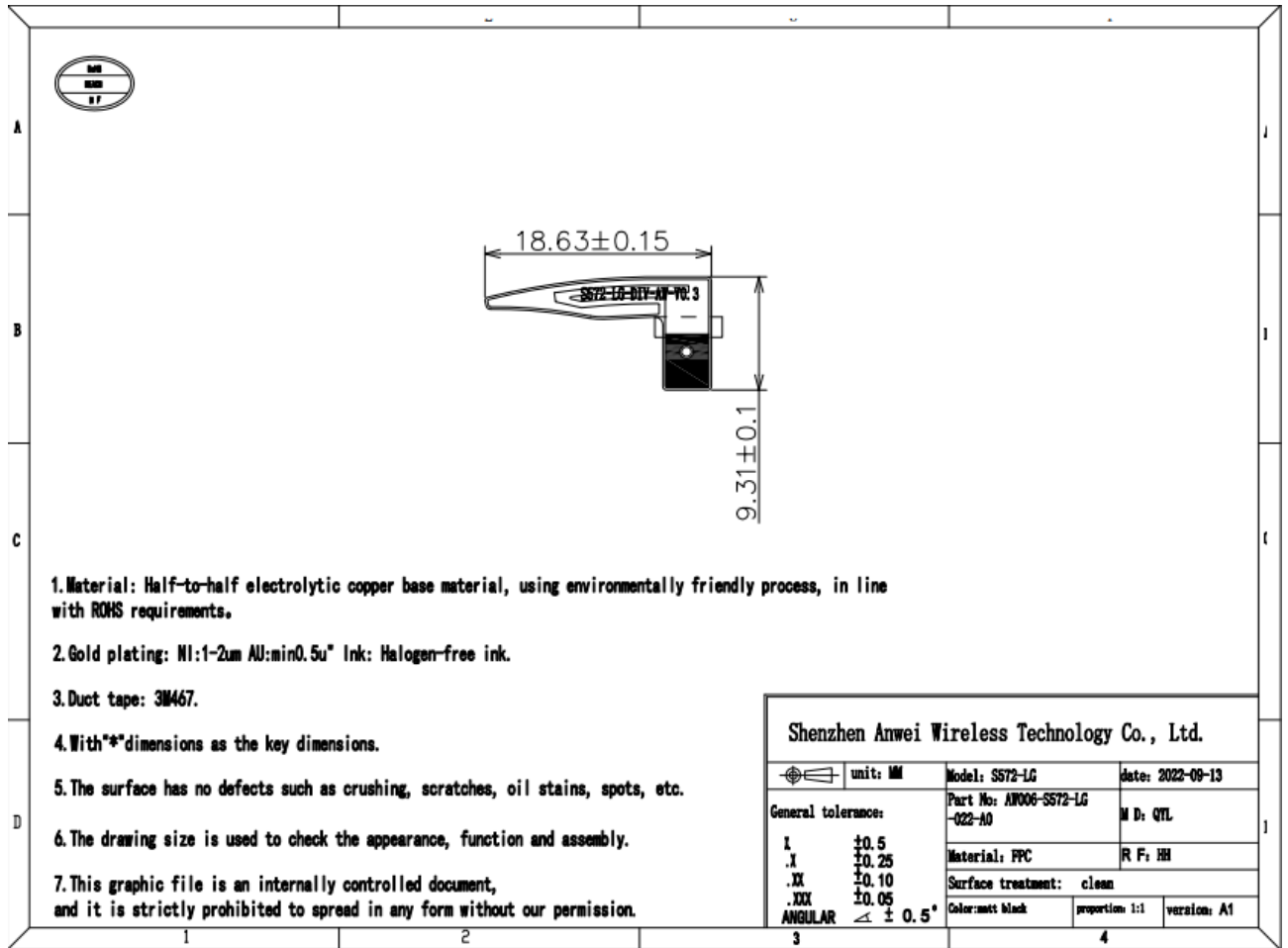
(Matcheing network):



RF1 L505 0Ω GSM900/1800/1900 W1/2/4/8 FDD1/2/3/4/7/8  
 RF2 L502 5.6NH GSM850 W850 FDD5  
 RF3 L504 18NH FDD12/17/28  
 RF4 L503 NC

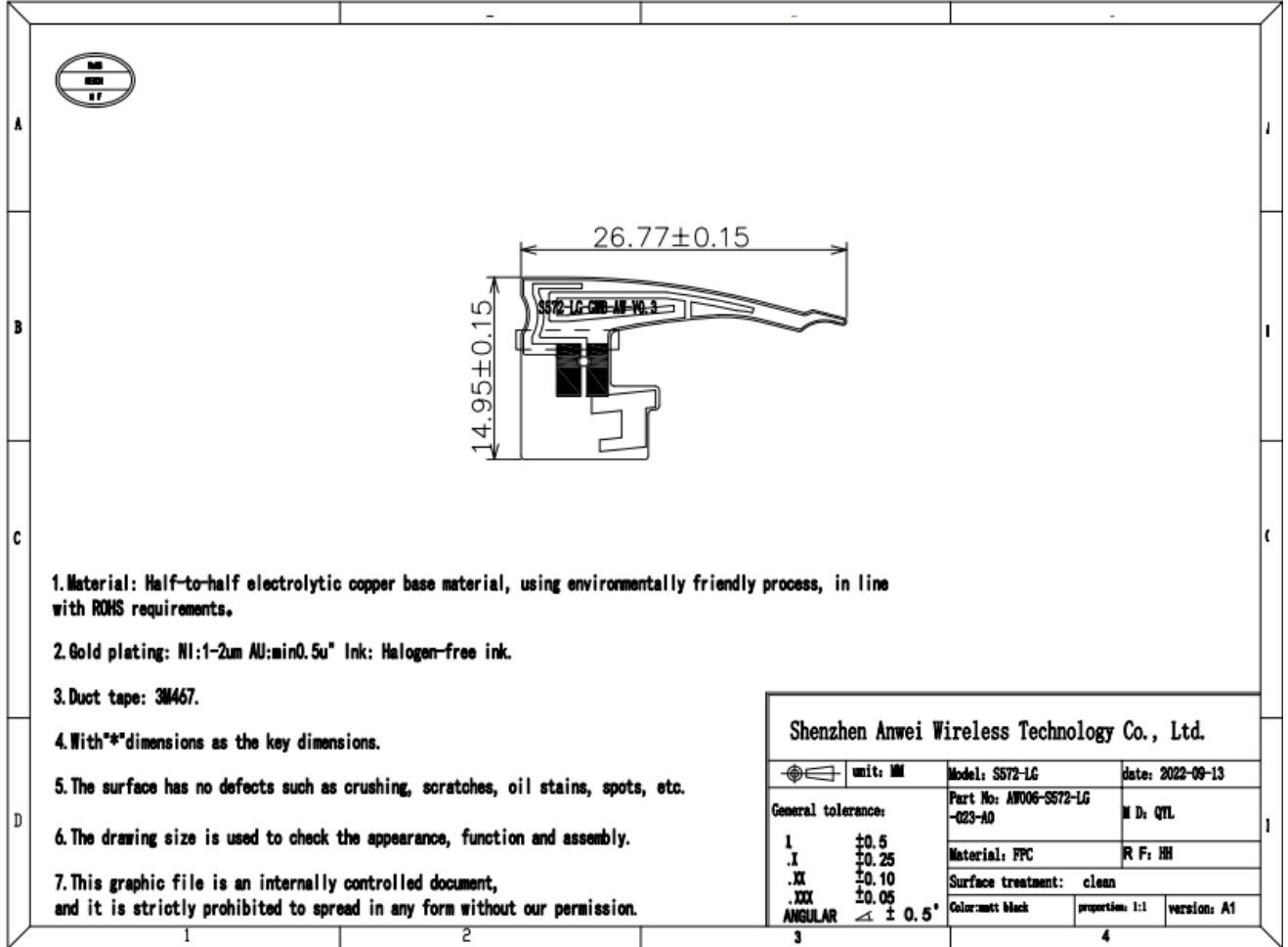
C504 12NH

(MIMOantenna 1)



(Working frequency band):1710MHZ~2700MHZ  
DCS1800/PCS1900+WCDMA-B1/2/4+LTE-B1/2/3/4/7

(GPS antenna) + (WIFI antenna)



(Working frequency band of 2.4G antenna) : 2400MHZ~2500MHZ

### ANWEI ANT TRP&TIS parameter Summary of POWER7

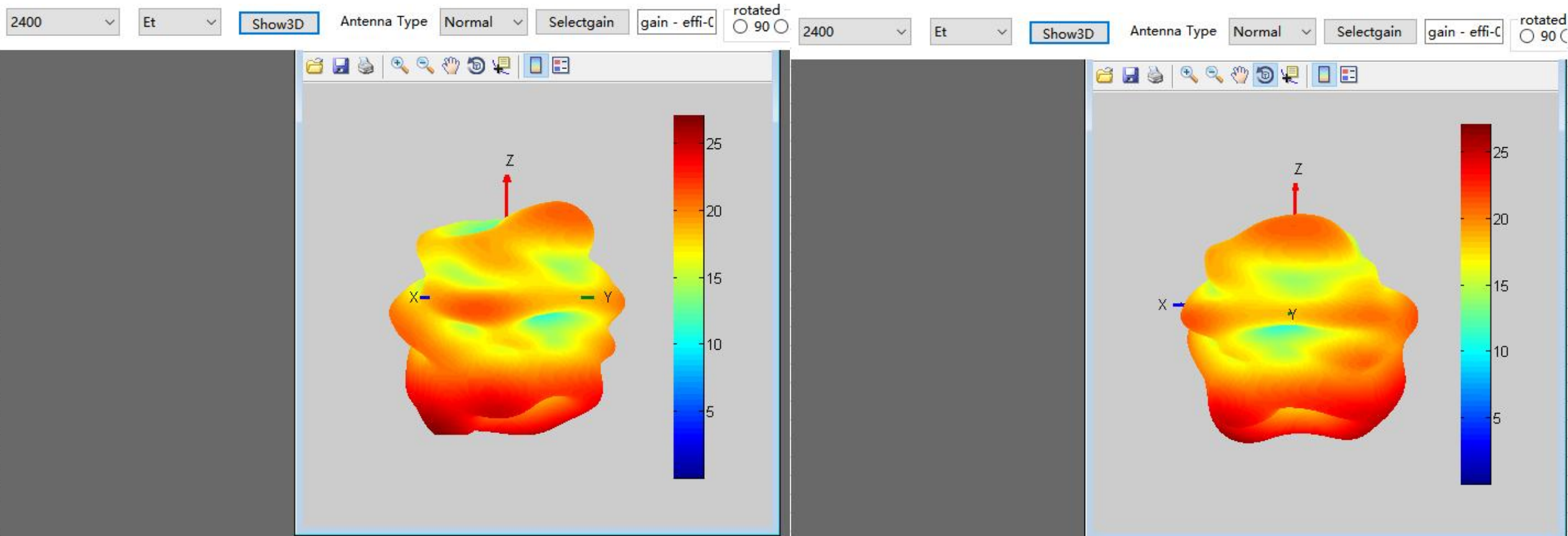
	Channel	TRP (dBm)	TIS (dBm)		Channel	TRP (dBm)	TIS (dBm)		Channel	TRP (dBm)	TIS (dBm)
GSM850	CH 128	25.51	-101.5	WCDMA1700	LOW	16.57	-103.0	FDD B4	LOW	17.24	-90.5
	CH 190	25.24	-102.0		medium	16.14	-102.8		medium	17.13	-90.0
	CH 251	26.01	-101.6		high	17.0	-102.3		high	17.27	-89.5
GSM900	CH 1	27.03	-101.2					FDD B5	LOW	17.24	-89.5
	CH 62	26.21	-101.4						medium	17.12	-89.7
	CH 124	26.15	-101.5						high	17.61	-89.2
DCS1800	CH 512	25.0	-103.2					FDD B7	LOW	17.1	-90.0
	CH 698	25.31	-102.6						medium	16.24	-90.2
	CH 885	25.2	-102.5						high	17.0	-89.2
PCS1900	CH 512	25.4	-103.0					FDD B8	LOW	17.07	-87.1
	CH 661	25.04	-102.7						medium	16.89	-87.3
	CH 810	25.14	-102.63						high	16.27	-87
WCDMA2100	LOW	17.24	-102.5					FDD B12	LOW	15.25	-90.5
	medium	16.07	-102.4						medium	16.01	-89.3
	high	15.21	-102.1						high	16.54	-90.3
WCDMA1900	LOW	16.52	-102.8	FDD B1	LOW	17.24	-90.2	FDD B17	LOW	16.34	-89.0
	medium	17.14	-102.5		medium	16.14	-89.6		medium	16.17	-89.6
	high	17.24	-102.		high	15.22	-89.5		high	16.24	-89.5
WCDMA900	LOW	17.0	-101.2					FDD B28A	LOW	16.17	-89.5
	medium	16.1	-100.8	FDD B2	LOW	16.54	-90.8		medium	16.20	-90.5
	high	16.01	-100.2		medium	17.34	-90.5		high	17.12	-90.3
			high		17.42	-90.2					
WCDMA850	LOW	17.24	-101.6	FDD B3	LOW	17.53	-90.3	FDD B28B	LOW	16.21	-90.6
	medium	17.0	-101.4		medium	17.41	-89.7		medium	17.37	-89.5
	high	17.15	-101.3		high	17.24	-90		high	17.24	-90.0

### (Antenna gain)

Standard	Band	Frequency	Gain(dbi)
FDD_LTE	FDD_B1	1925	1.13
FDD_LTE	FDD_B2	1855	1.25
FDD_LTE	FDD_B3	1715	1.20
FDD_LTE	FDD_B4	1715	1.25
FDD_LTE	FDD_B5	829	1.25
FDD_LTE	FDD_B7	2505	1.25
FDD_LTE	FDD_B8	885	1.05
FDD_LTE	FDD_B12	704	1.25
FDD_LTE	FDD_B17	709	1.25
FDD_LTE	FDD_B28	723	1.15
WCDMA	WCDMA_B1	1922.4	1.05
WCDMA	WCDMA_B2	1852.4	1.25
WCDMA	WCDMA_B5	826.4	1.25
WCDMA	WCDMA_B8	882.4	1.01
WCDMA	WCDMA_B4	1715	1.25
GSM	GSM850	824.2	1.25
GSM	GSM900	890.2	1.21
GSM	DCS1800	1710.2	1.23
GSM	PCS1900	1850.2	1.25
2.4G		2412	-0.9

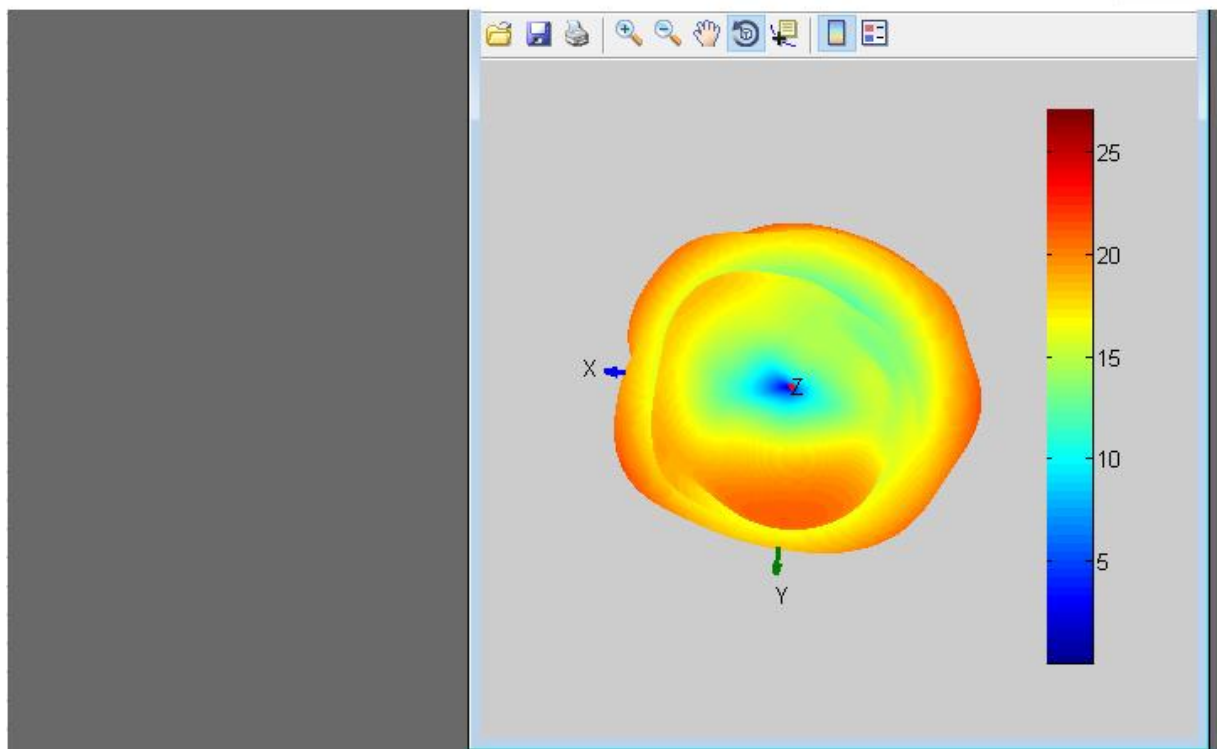


# BT @ 2.4GWIFI

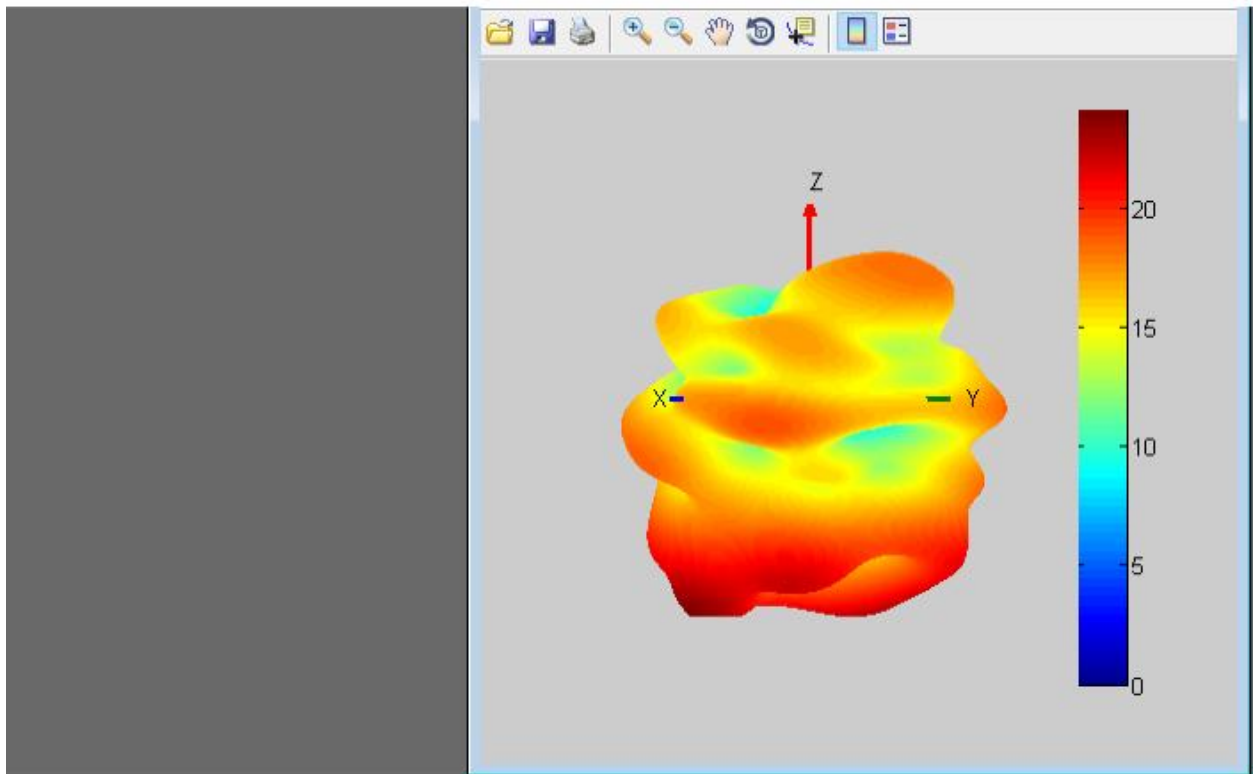


# BT @ 2.4GWIFI

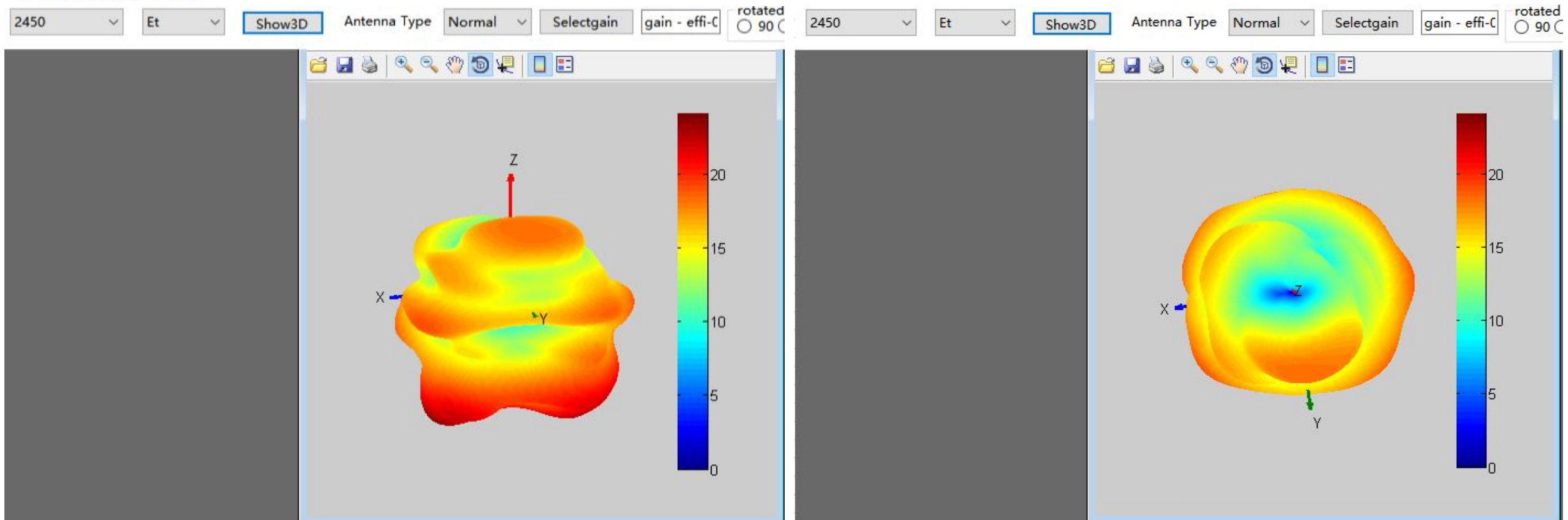
2400 ▾ Et ▾ Show3D Antenna Type Normal ▾ Selectgain gain - effi-C rotated  90 C



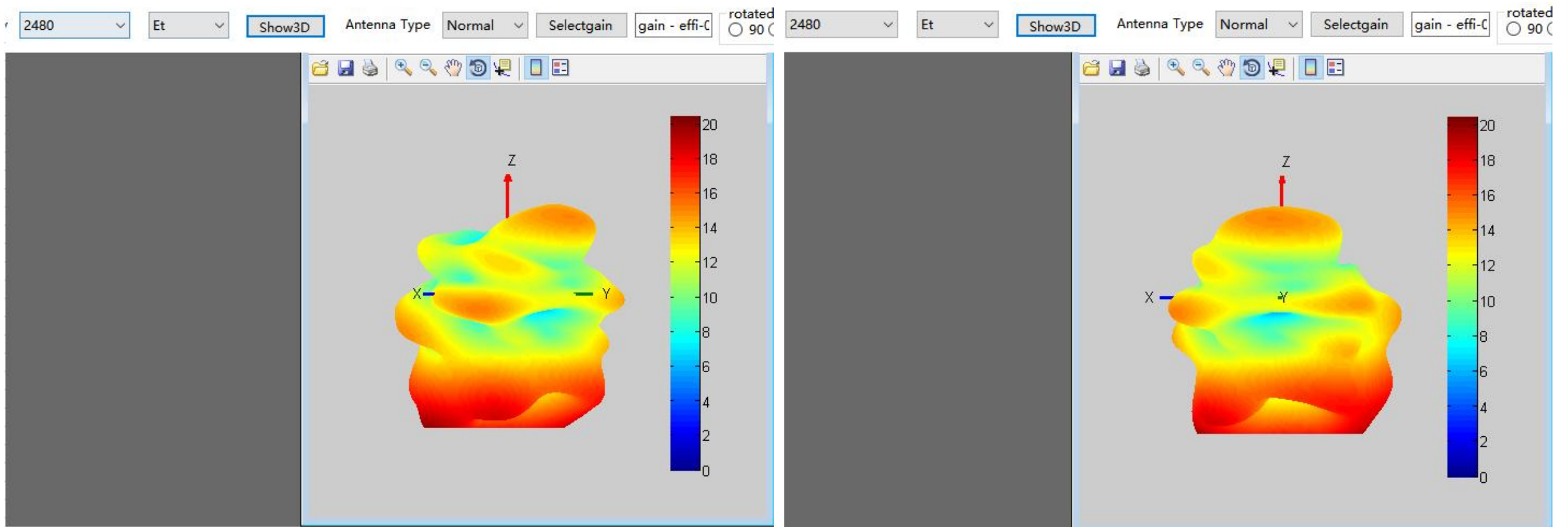
2450 ▾ Et ▾ Show3D Antenna Type Normal ▾ Selectgain gain - effi-C rotated  90 C



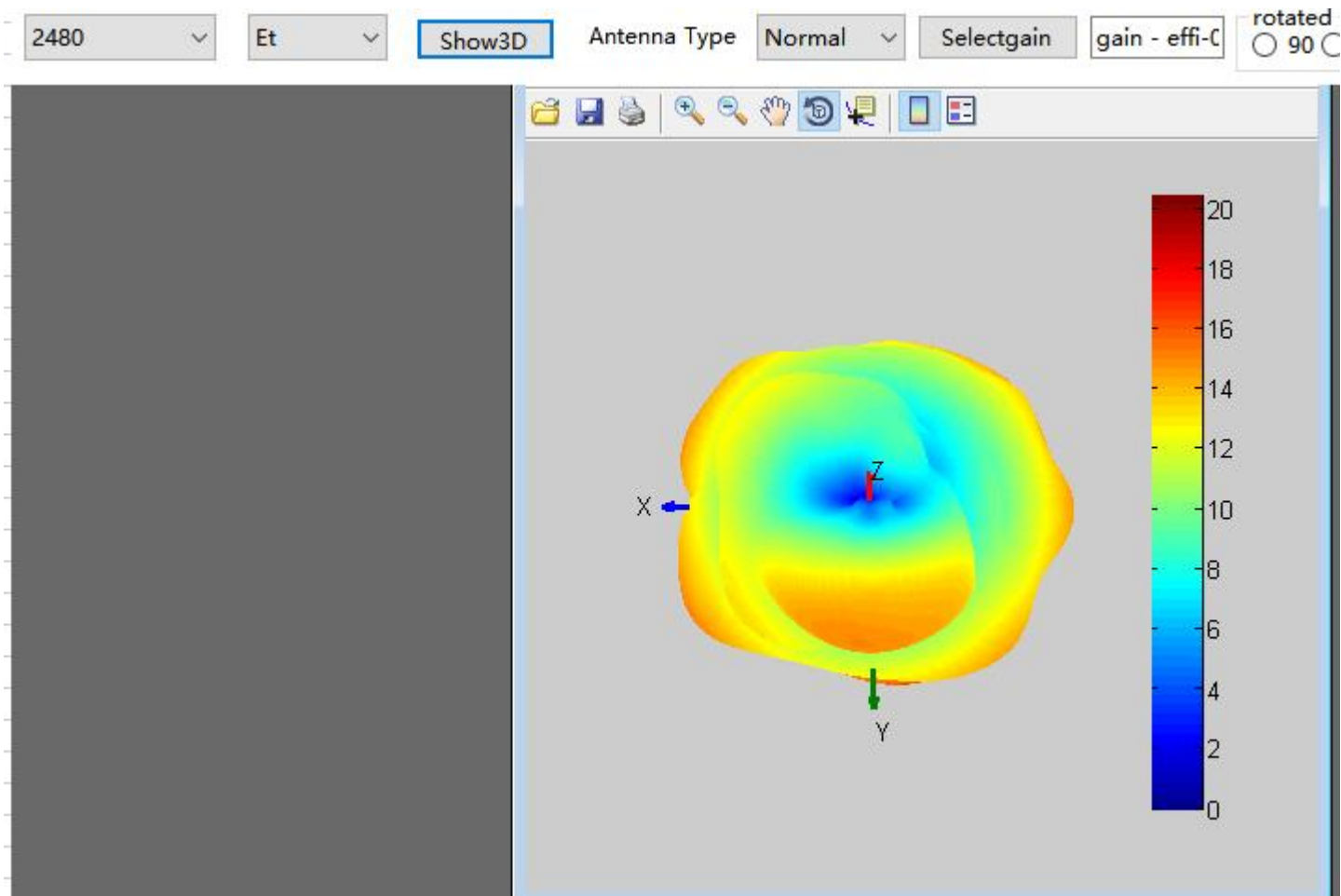
# BT @ 2.4GWIFI



# BT @ 2.4GWIFI



# BT @ 2.4GWIFI



# BT @ 2.4GWIFI

