

Antenna Test Report

SHENZHEN KURUIJIE

Customer: 联代
Project: H5508-32E1

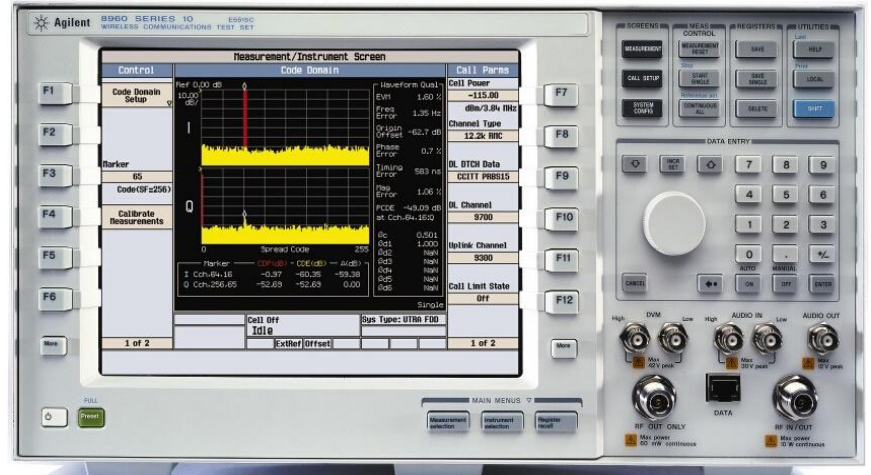
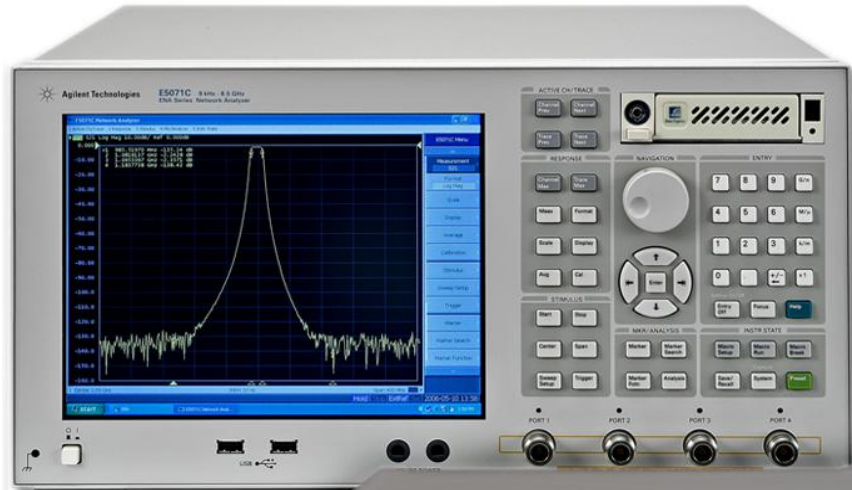
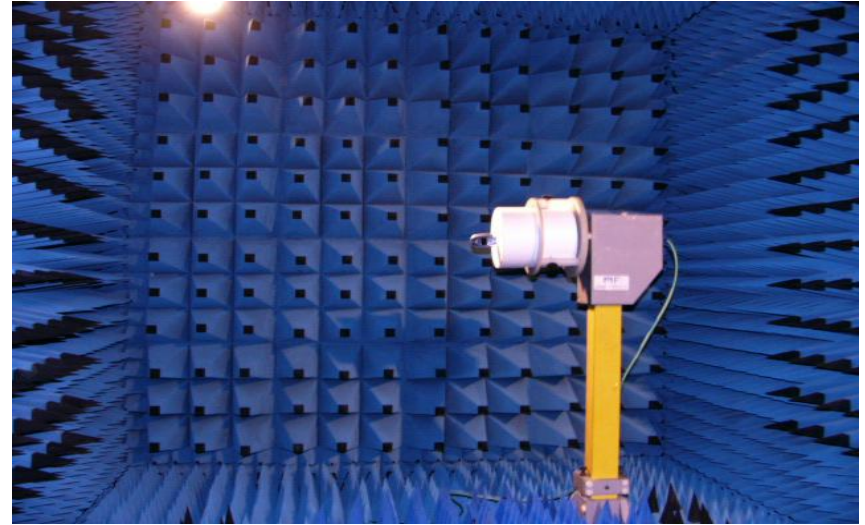
RF Engineer: 邹修依
Testing Date: 2024.1.15

Index:

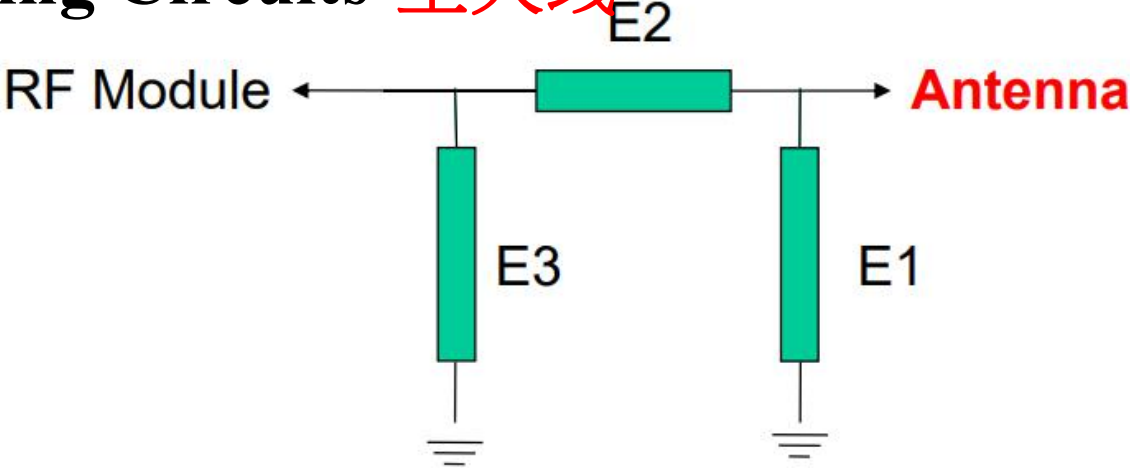
- 1. Testing Item & Equipments**
- 2. Matching Circuits**
- 3. Environmental Disposal**
- 4. Test Data**

1. The Equipment of Active Test

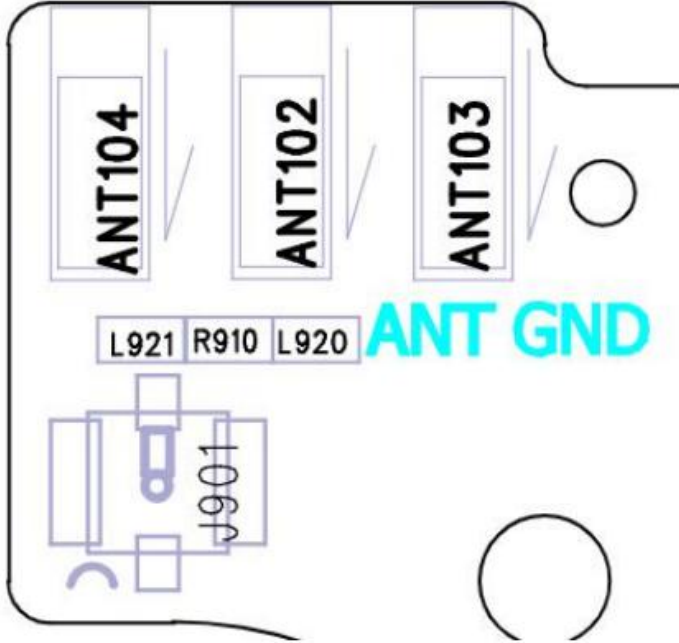
- 1: Anechoic Chamber 7x4x3 m (3D)
- 2: Rohde & Schwarz CMW500
- 3: AGILENT 8960 5515C
- 4: Network Analyzer-AGILENT ENA5071B



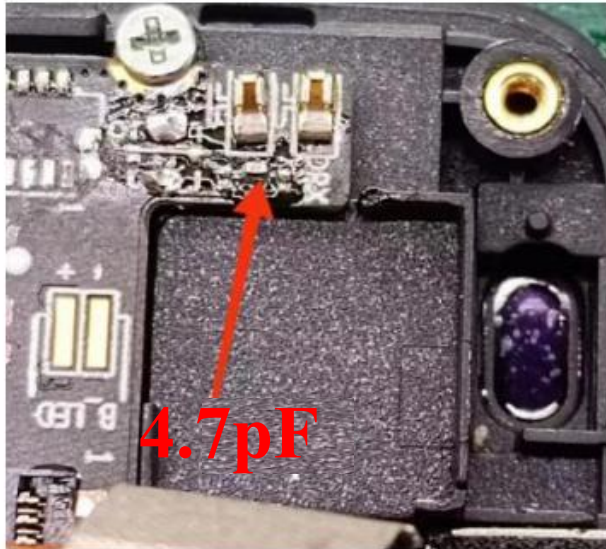
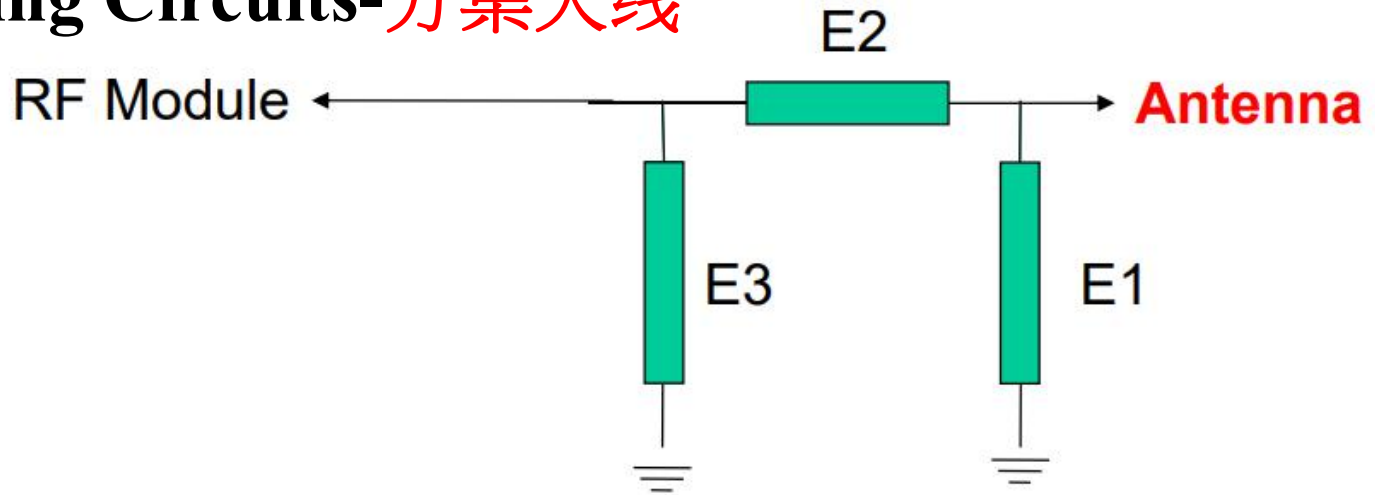
2. Matching Circuits-主天线



Element	Value
E1(0201)-L920	15NH
E2(0201)-R910	4.7PF
E3(0201)-L921	NC



2. Matching Circuits-分集天线



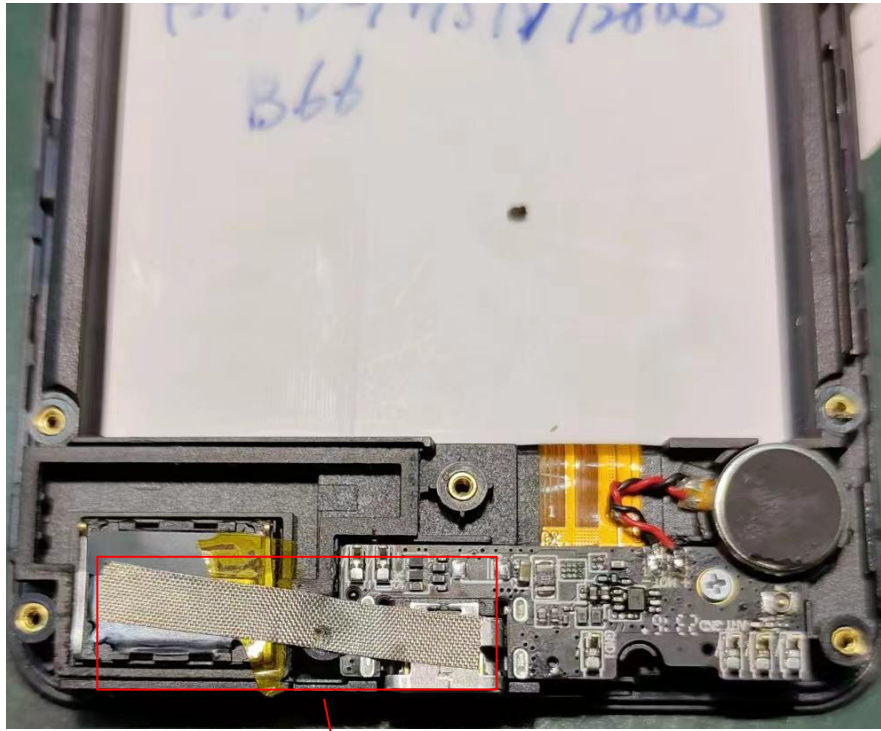
Element	Value
E1(0201)	NC
E2(0201)	4.7PF
E3(0201)	NC

3. 开关逻辑

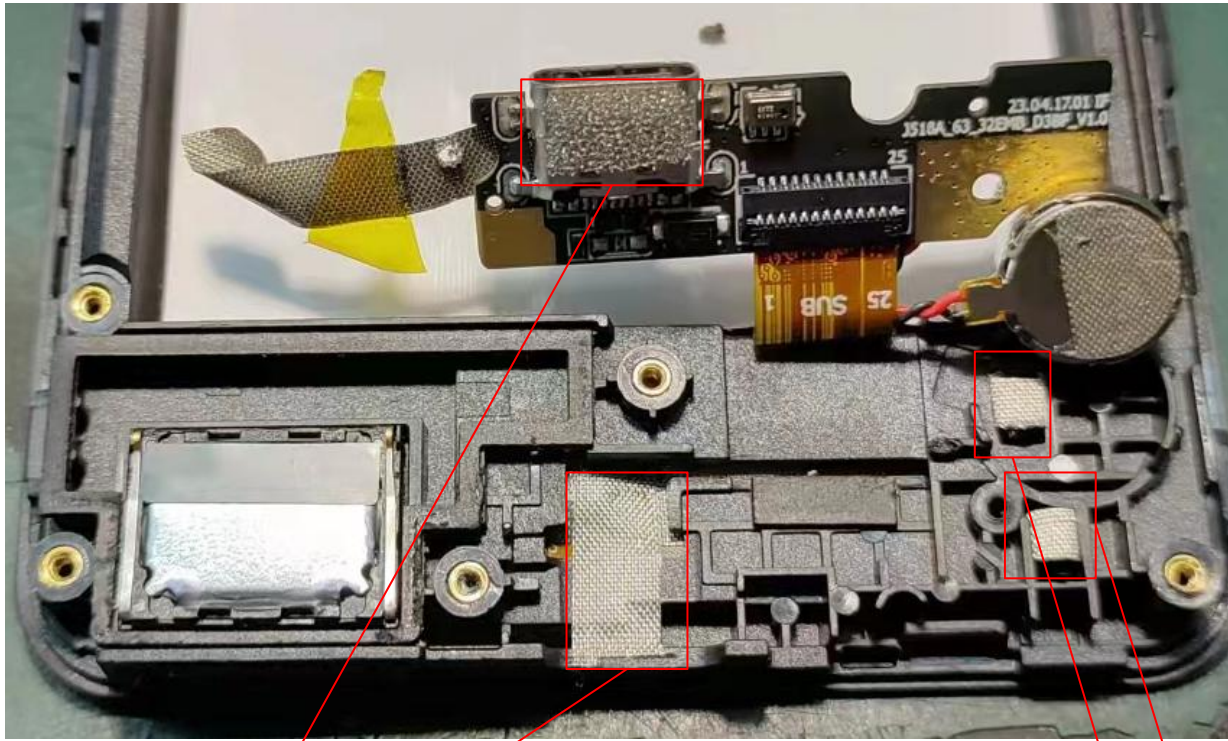
H5508-32E1

开关匹配逻辑	开关路径	匹配值	2G频率	3G频率	4G频率
	RF1	0欧	2G=850/1800/1900	3G=B2/B5	4G=B2/B4/B5/B66
	RF2	8.2nH			4G=B7/B28AB
	RF3	20pF	2G=900		
	RF4				

4. Environmental Disposal

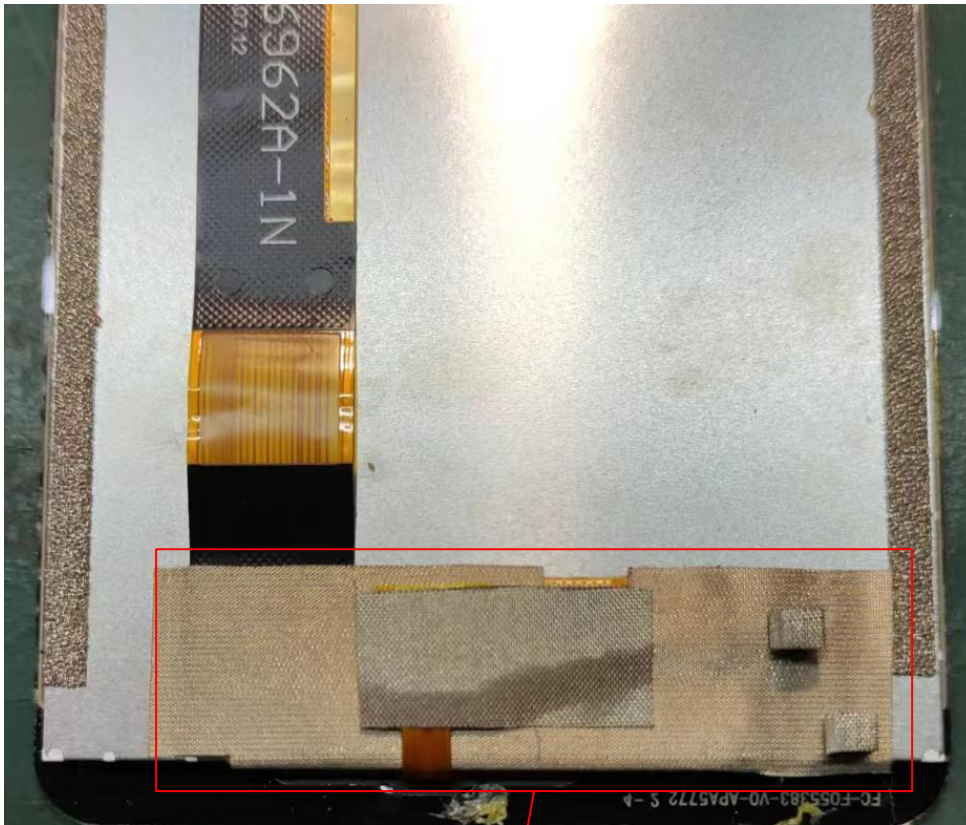


用导电布将喇叭和USB接通，
用高温胶将周围其他元器件盖住，避免短路

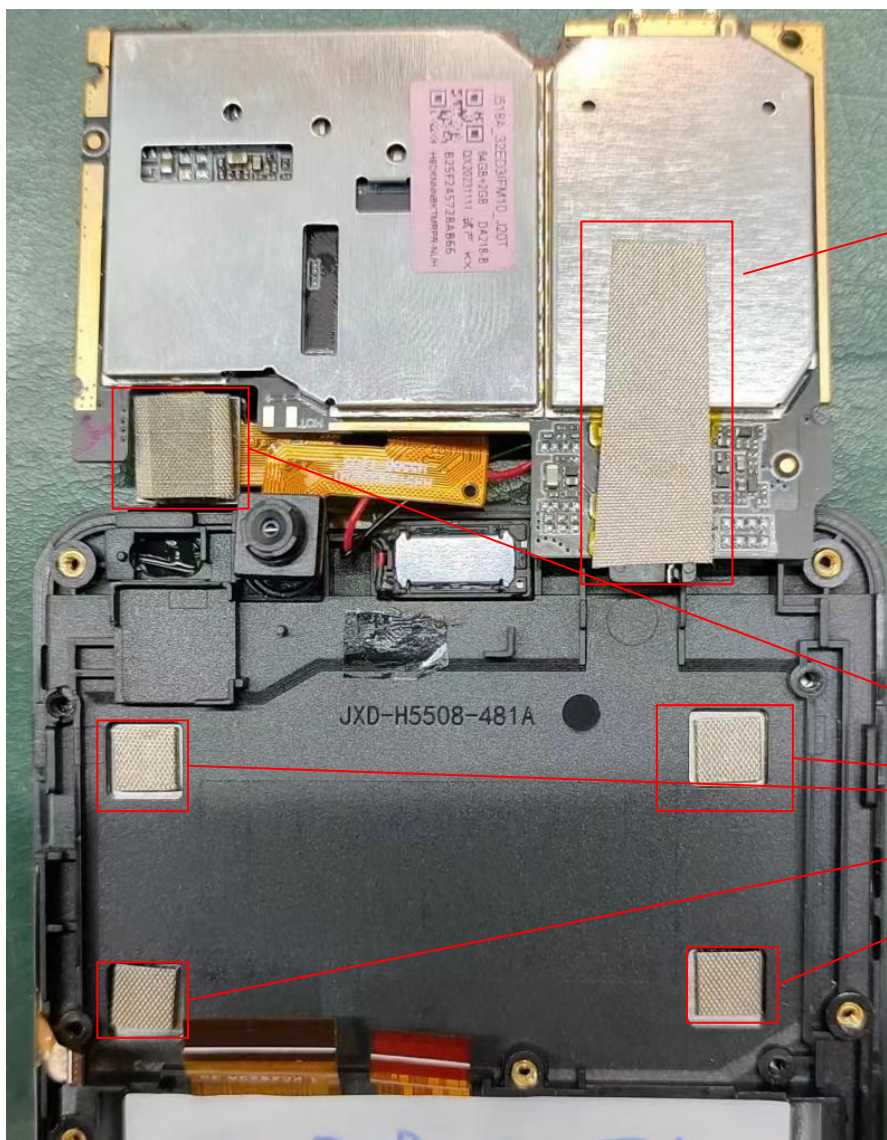


USB接口下方用导电海绵将与屏框接通

贴上导电泡棉将喇叭和小板接地



屏排线用导电布包裹，露出来的排线
在贴一层导电布



在屏蔽罩上贴一条导电布延伸出来盖在耳机孔上(注意用高温胶绝缘, 避免短路)

贴上导电泡棉将主板接地

5. Test Data

4G	LTE2		LTE4		LTE5		LTE7	
	18650	19150	20000	20350	20450	20600	20800	21400
TRP	17.18	17.5	17.94	16.53	17.17	16.76	16.38	16.56
TIS		-90.12		-91.08		-89.17		-90.02
4G	LTE28				LTE66			
	27260	27410	27460	27610	132022	132622		
TRP	16.42	16.29	16.34	16.51	18.13	18.76		
TIS		-90.13		-89.65		-92.85		
3G	WCDMA_II		WCDMA_V					
	9262	9538	4132	4233				
TRP	18.29	17.52	17.31	17.18				
TIS		-103.42		-102.35				
2G	GSM850		EGSM		DCS		PCS	
	128	251	1	124	512	885	512	810
TRP	25.25	26.74	23.41	24.09	24.5	24.12	24.49	24.32
TIS		-101.05		-100.2		-102.41		-101.72

GPS实测报告

位置

测试结果

华强创意产业园5C室外

冷启动90秒定位, 最大CN值43, 可使用星数5颗以上.

Wifi 2G

1

7

13

TRP

12.51

12.83

14.91

TIS

-80.34

-80.77

-80.91



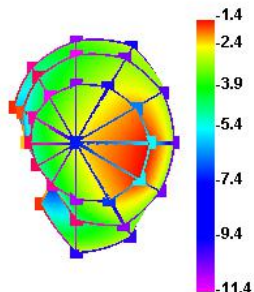
天线增益

主天线	频率段	增益值 (dBi)
LTE-B2	1850-1900MHZ	0.6
LTE-B4	1710-2155	0.5
LTE-B5	824-894MHZ	-1.0
LTE-B7	2500-2600MHZ	1.0
LTE-B28	703-803MHZ	-1.5
LTE-B66	1710-2170MHZ	0.5
WCDMA-B2	1852-1988	0.6
WCDMA-B5	826-891MHZ	-1.0
GSM850	824-894MHZ	-1.0
EGSM900	880-960MHZ	-1.0
DCS1800	1710-1880MHZ	0.5
PCS1900	1850-1990MHZ	0.6

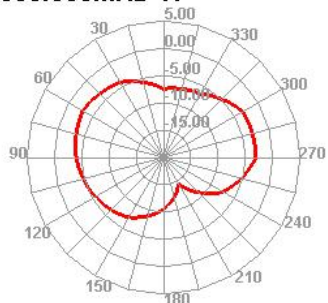
小天线	频率段	增益值 (dBi)
wifi/BT	2400-2500MHZ	1.3
GPS	1575.42MHZ	0.1

主天线 :

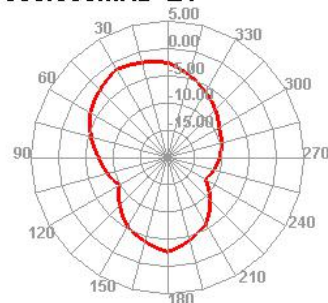
880.000MHz



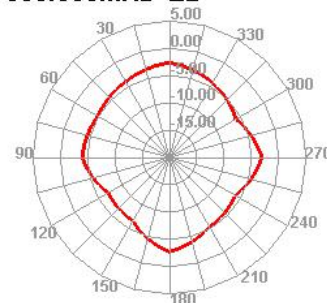
880.000MHz H



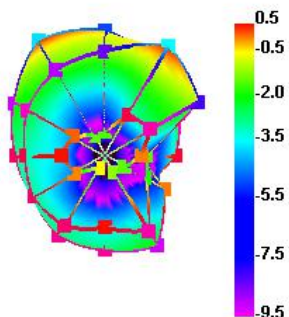
880.000MHz E1



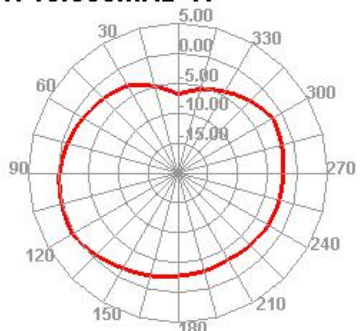
880.000MHz E2



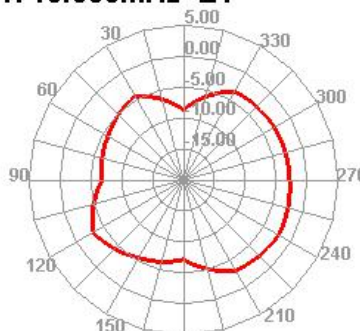
1710.000MHz



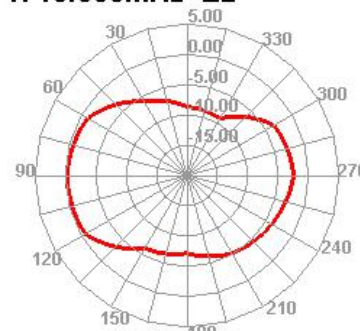
1710.000MHz H



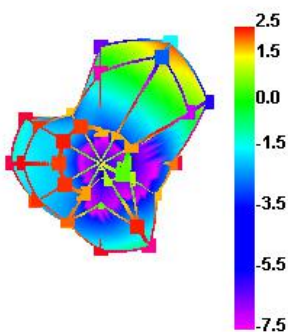
1710.000MHz E1



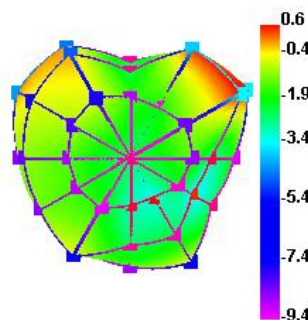
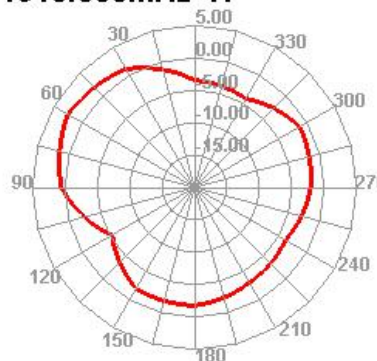
1710.000MHz E2



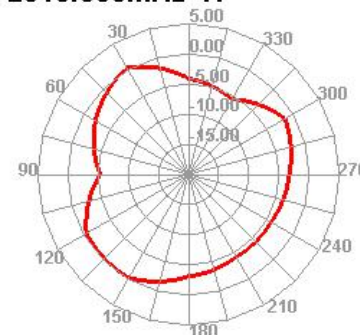
1910.000MHz



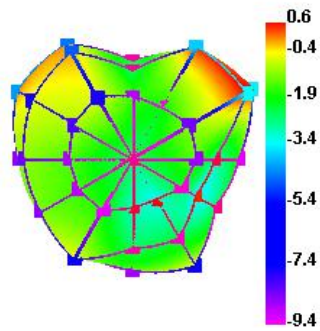
1910.000MHz H



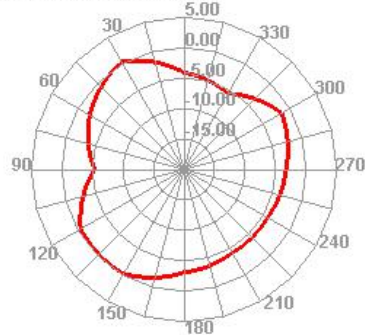
2010.000MHz H



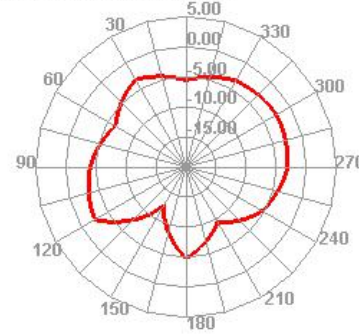
2010.000MHz



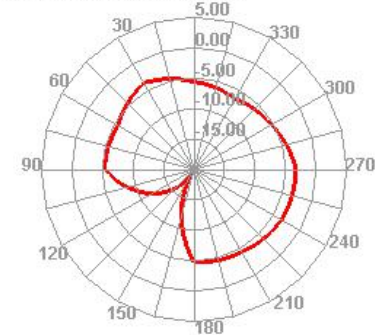
2010.000MHz H



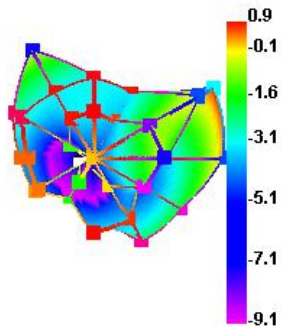
2010.000MHz E1



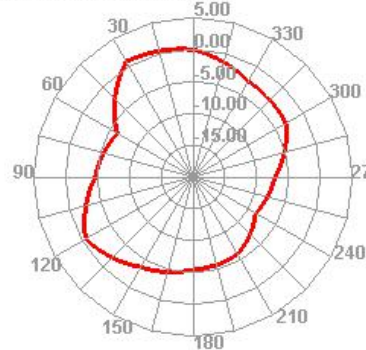
2010.000MHz E2



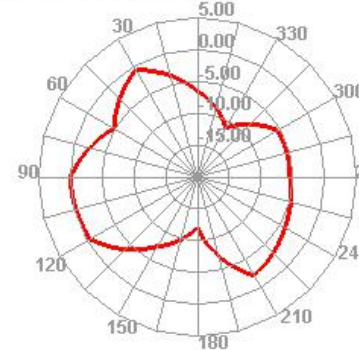
2310.000MHz



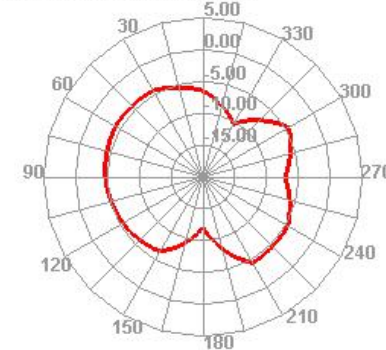
2310.000MHz H



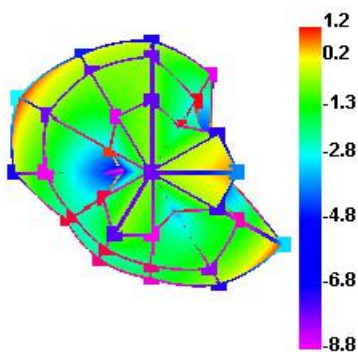
2310.000MHz E1



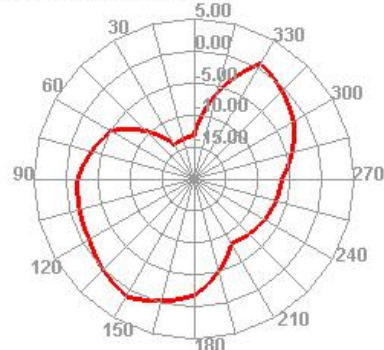
2310.000MHz E2



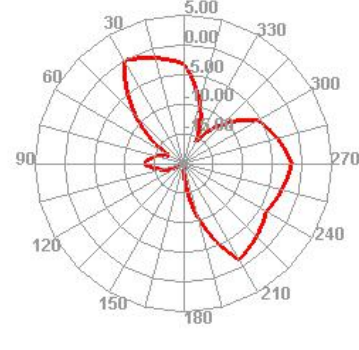
2600.000MHz



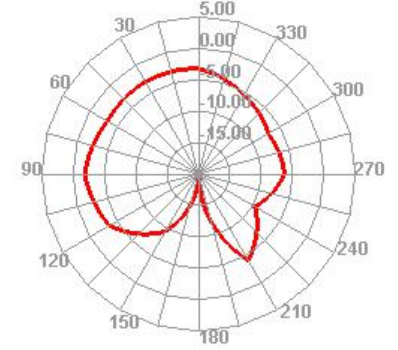
2600.000MHz H



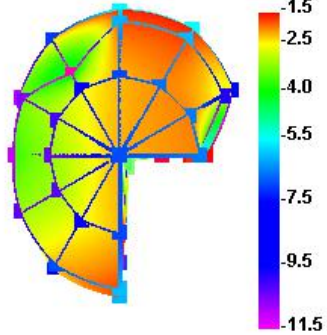
2600.000MHz E1



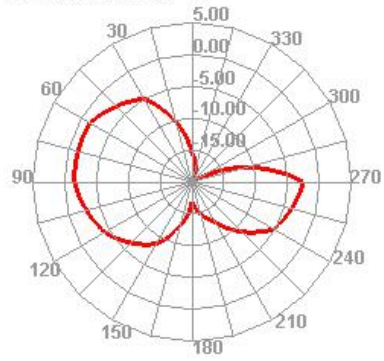
2600.000MHz E2



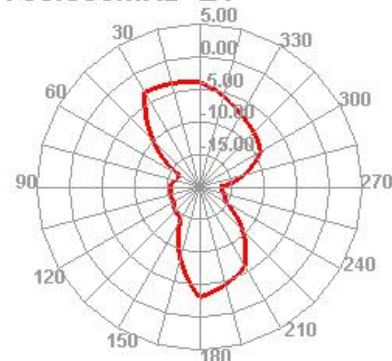
750.000MHz



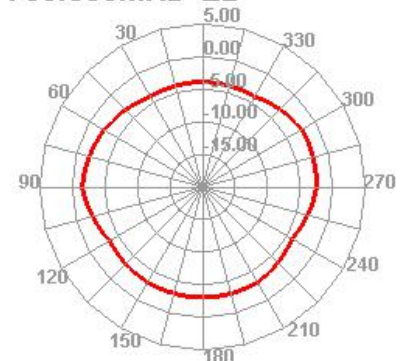
750.000MHz H



750.000MHz E1

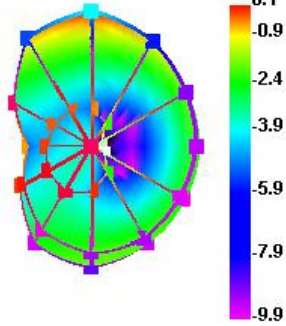


750.000MHz E2

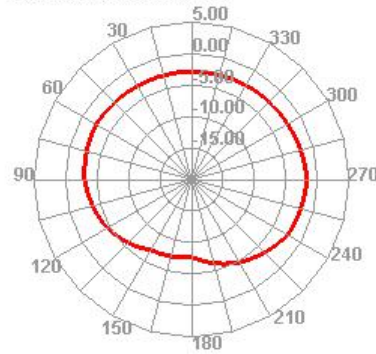


WIFI/BT/GPS :

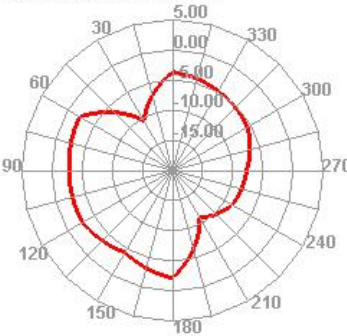
1565.000MHz



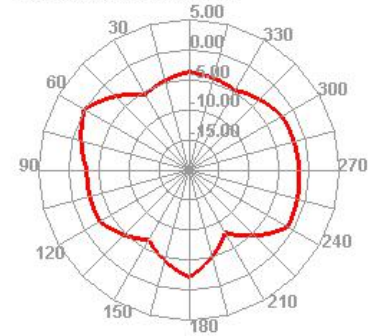
1565.000MHz H



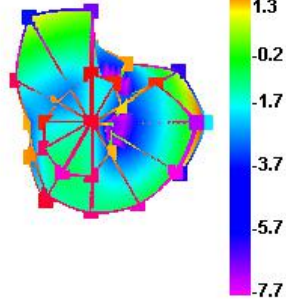
1565.000MHz E1



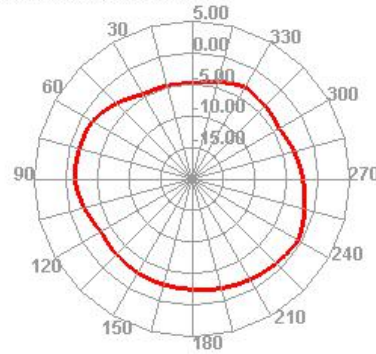
1565.000MHz E2



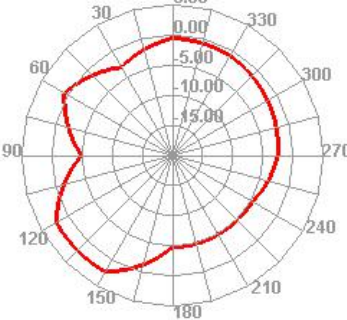
2400.000MHz



2400.000MHz H



2400.000MHz E1



2400.000MHz E2

