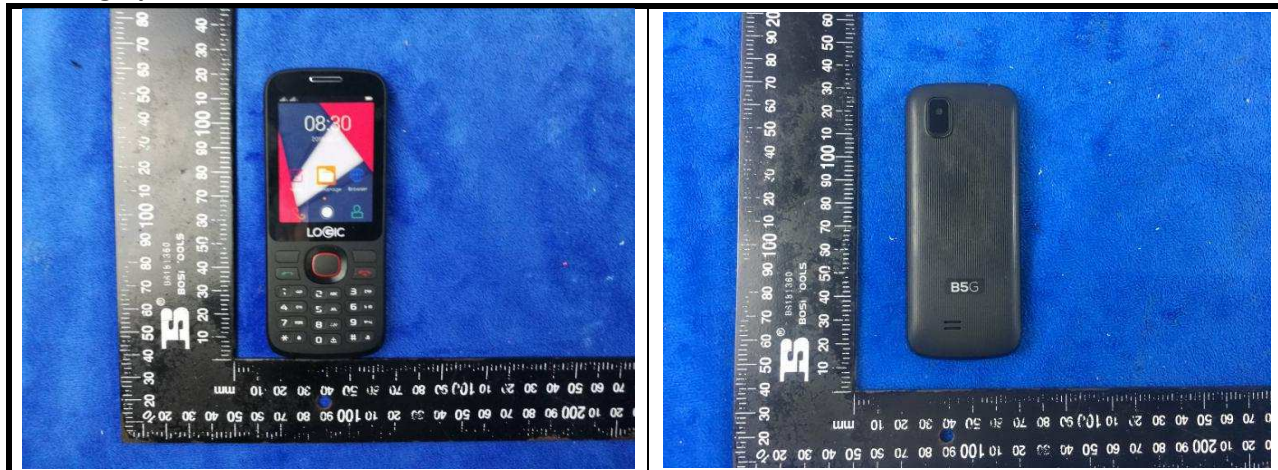
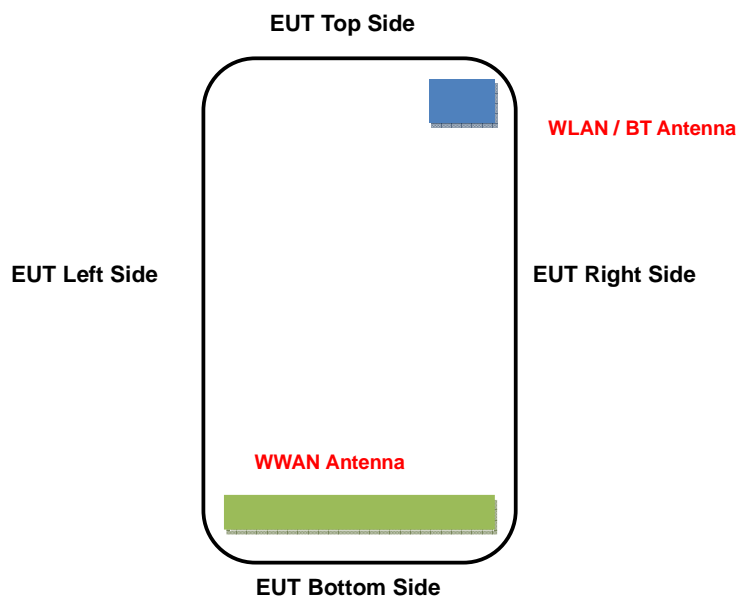


FCC SAR Test Report

<Photographs of EUT>



<Antenna Location>



<EUT Front View>

The separation distance for antenna to edge:

Antenna	overall diagonal	overall diagonal	To Left Side (mm)	To Right Side (mm)	To Top Side (mm)	To Bottom Side (mm)
WWAN	120	65	3	3	100	5
WLAN / BT			32	3	3	92

FCC SAR Test Report

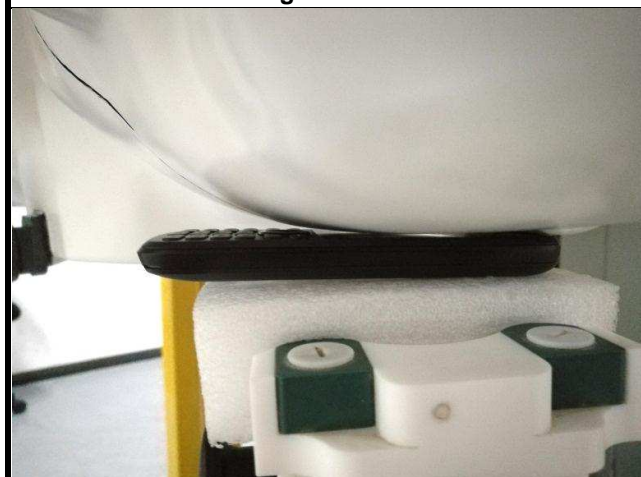
<Photographs of SAR Setup>



Right Cheek



Right Tilted



Left Cheek



Left Tilted



Front Face of EUT with 1.0 cm Gap



Rear Face of EUT with 1.0 cm Gap

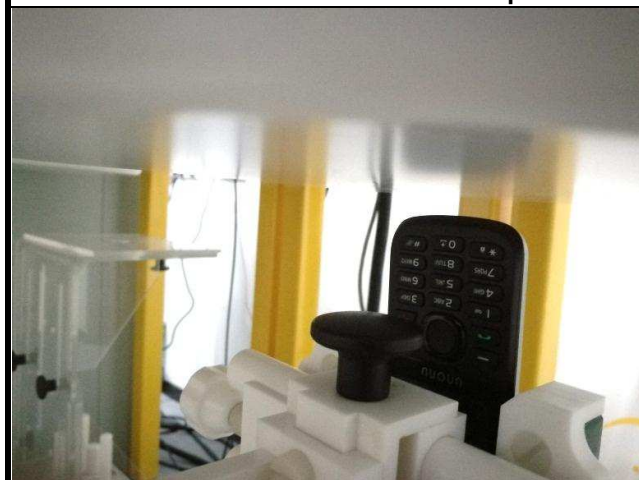
FCC SAR Test Report



Left Side of EUT with 1.0 cm Gap



Right Side of EUT with 1.0 cm Gap



Bottom Side of EUT with 1.0 cm Gap

