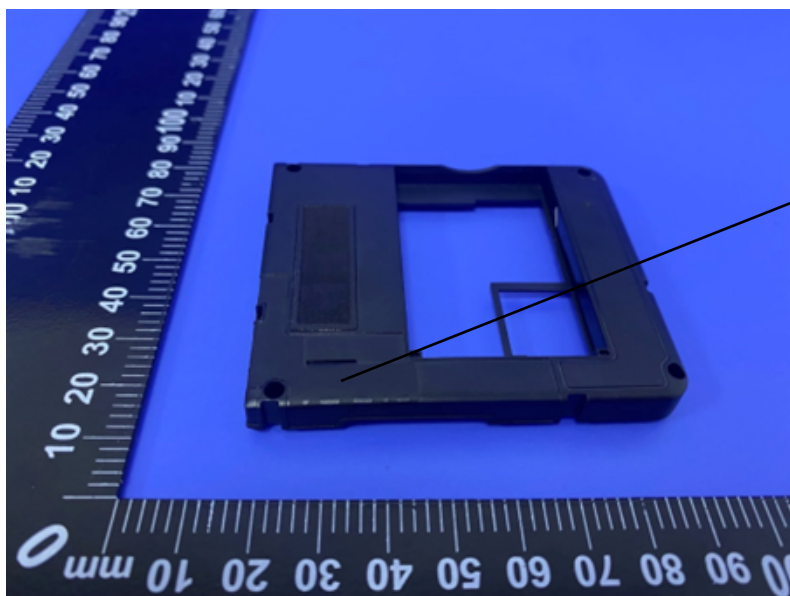


Shenzhen QIXIN TongDA Technology Co., LTD

The west side of the first floor, the third floor,
Building 1, Shayi North Yongfa Science Park,
Xinhe Road, Gonghe Community, Shajing Street,
Baoan District, Shenzhen

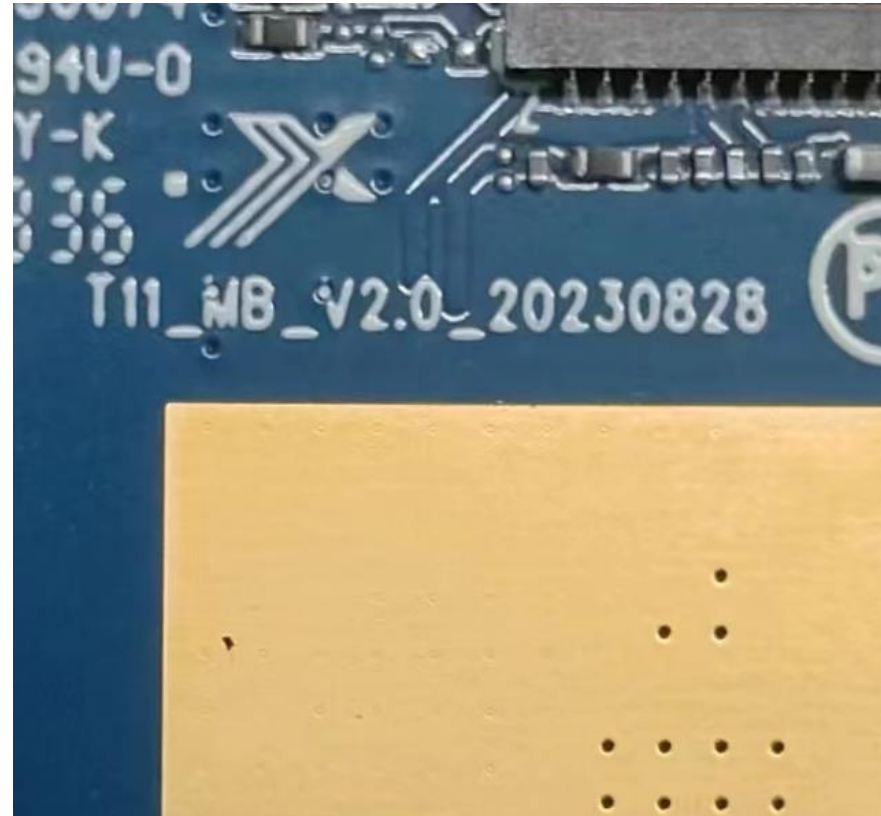
项目Project: F19-4G不带开关调试报告
No switch debugging report
频段Frequency: GSM
天线Antenna: 熊锡巍 Xiwei Xiong
日期Date: 2024年01月06日

	测试项目 test project	设备 devices
1. S参数 s parameter	1. 回损 (RL) 2. 驻波比 (VSWR)	网络分析仪 network analyzer: Agilent 5071B
2. 耦合功率测试 Coupled power test	1. 发射功率 (power) 2. 接收灵敏度 (level)	综测仪 integrated measuring instrument: CMW500/8960 暗室 DARK ROOM: 6*4*3微波暗室

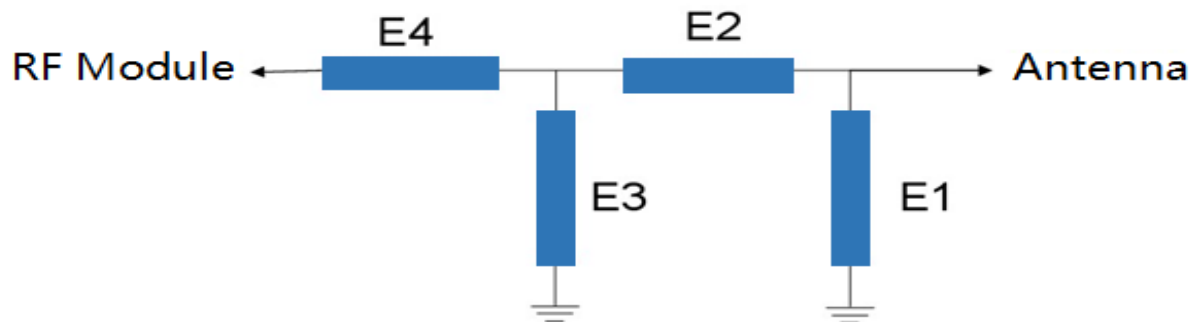


length: 24mm

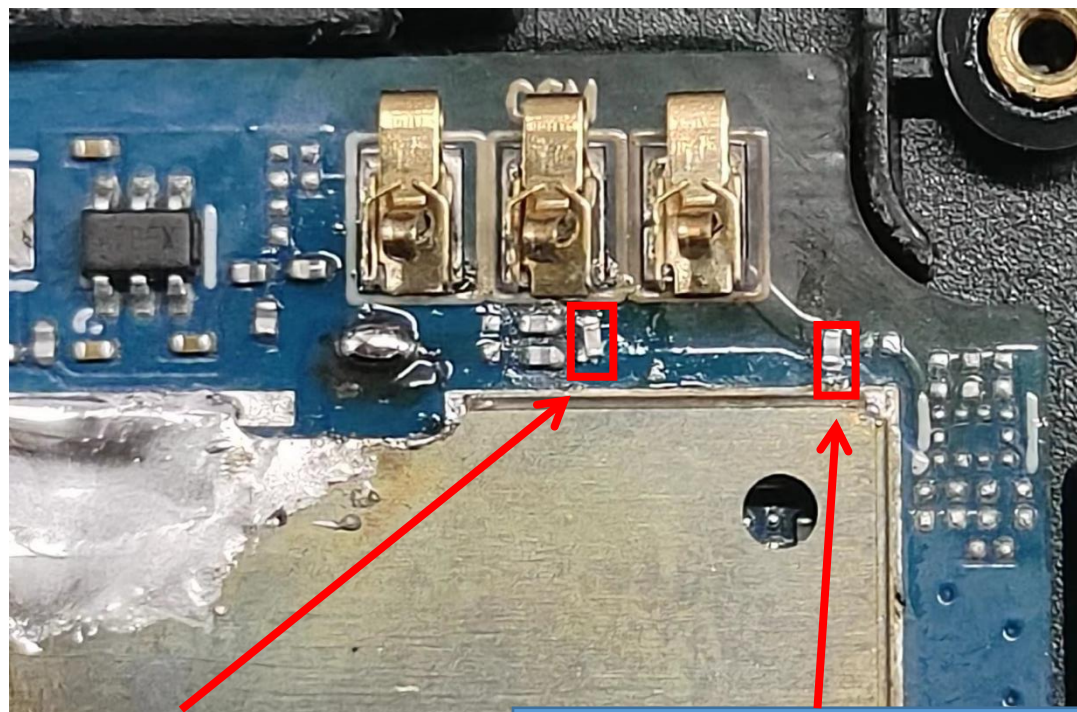
Wide: 32mm



主信号源匹配电路图 Main signal source matching circuit diagram



Element	Value
E1	0.5PF
E2	未更改no change
E3	未更改no change
E4	未更改no change



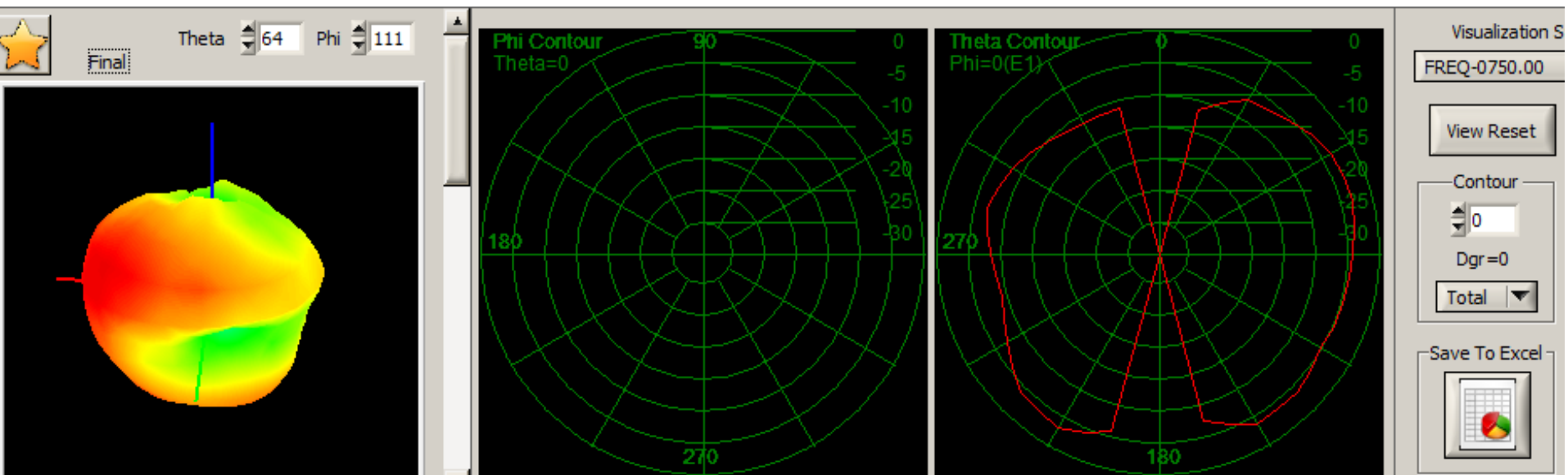
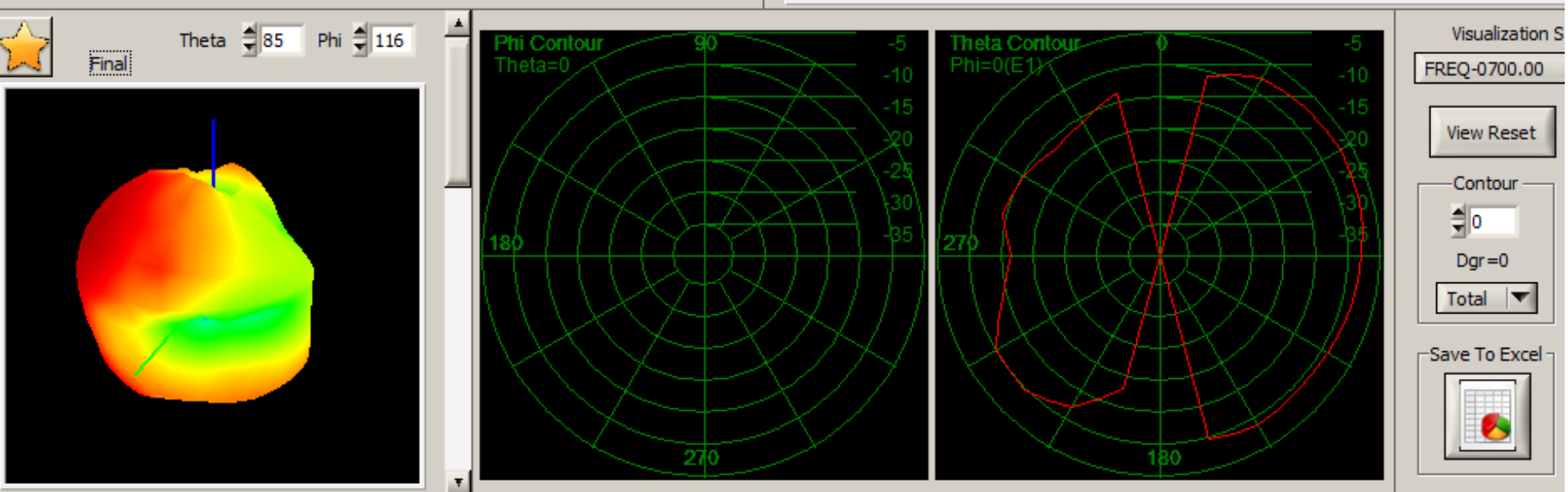
原主板并地电容0.5PF保持不变 The parallel ground capacitance of the original mainboard remains unchanged at 0.5PF

地脚并地2.0NH电感 Base parallel 2.0NH inductance

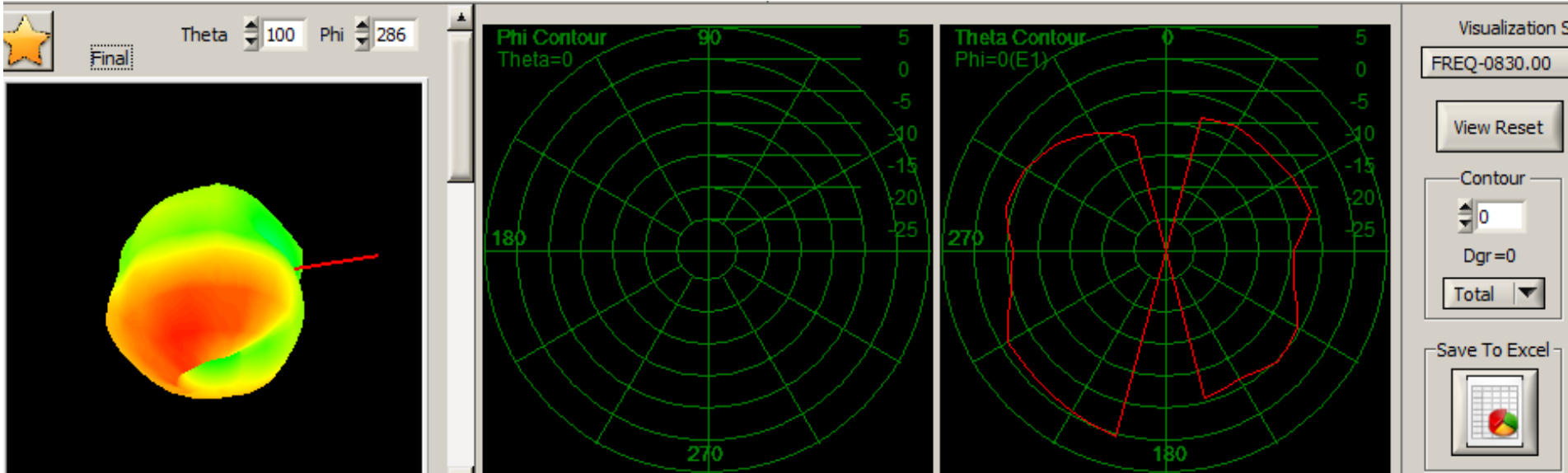
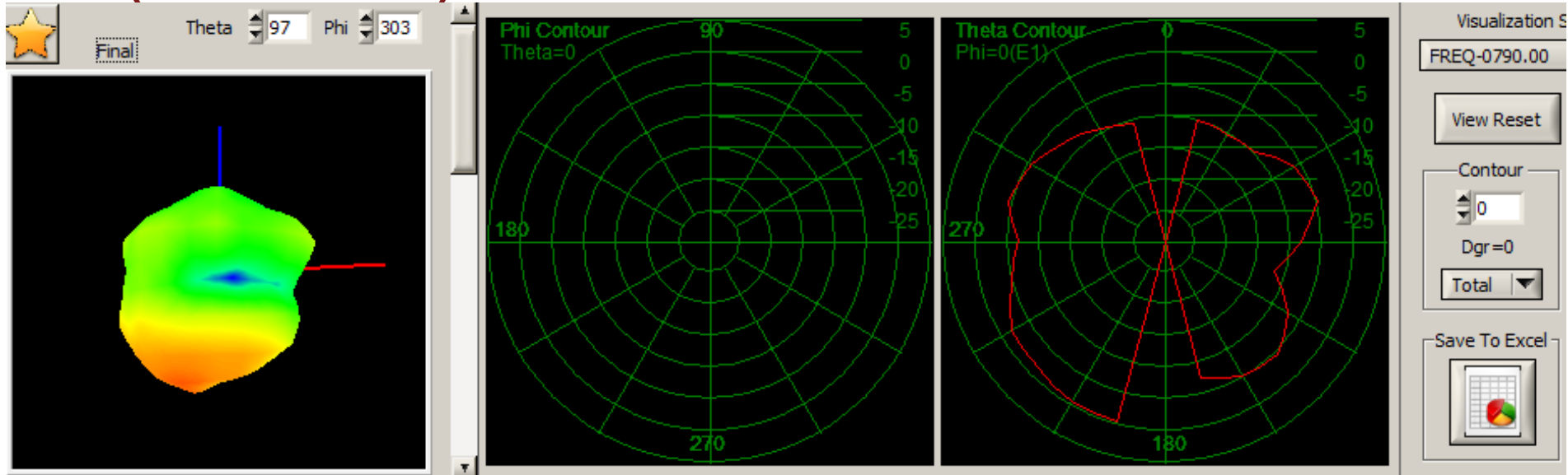
Band	Max Gain	Band	Max Gain
GSM900	-0.97	LTE-FDD-B4	1.64
DCS1800	1.89	LTE-FDD-B5	0.42
GSM850	0.42	LTE-FDD-B8	-0.97
PCS1900	1.17	LTE-FDD-B12	0.14
WCDMA 850	0.42	LTE-FDD-B13	0.29
WCDMA 1700	1.64	LTE-FDD-B17	0.17
WCDMA 1900	1.17	LTE-FDD-B66	1.22
LTE-FDD-B2	1.17	LTE-FDD-B28	0.17

Frequency	Gain (dB)
2400MHz	0.23
2425MHz	0.27
2450MHz	0.31
2475MHz	0.33
2500MHz	0.29

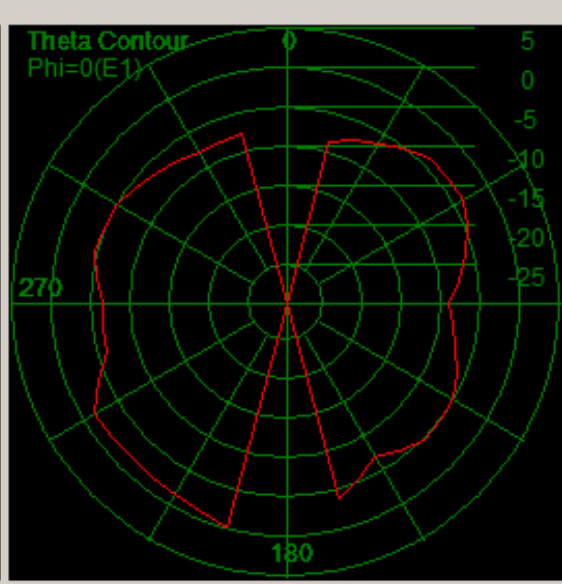
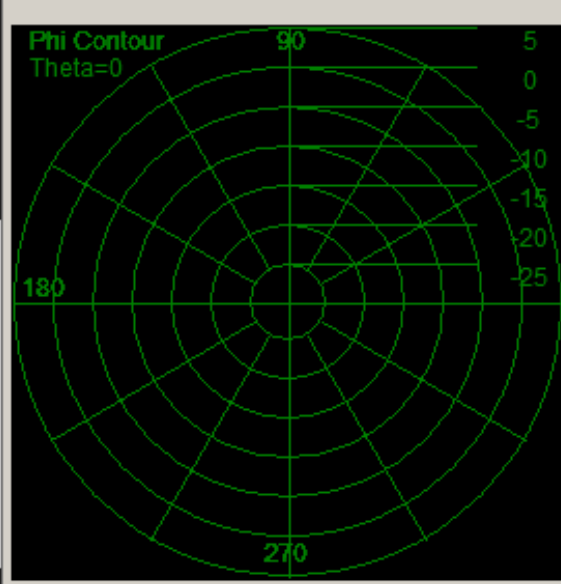
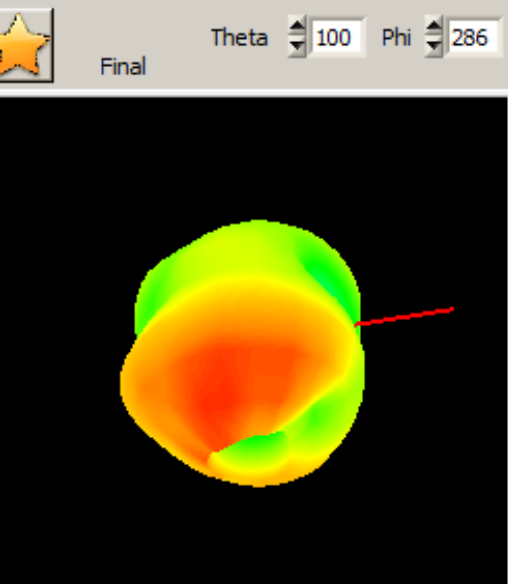
天线辐射测试数据 (方向图) Antenna radiation test data (direction chart)



天线辐射测试数据 (方向图) Antenna radiation test data (direction chart)



天线辐射测试数据 (方向图) Antenna radiation test data (direction chart)



Visualization

FREQ-0880.00

View Reset

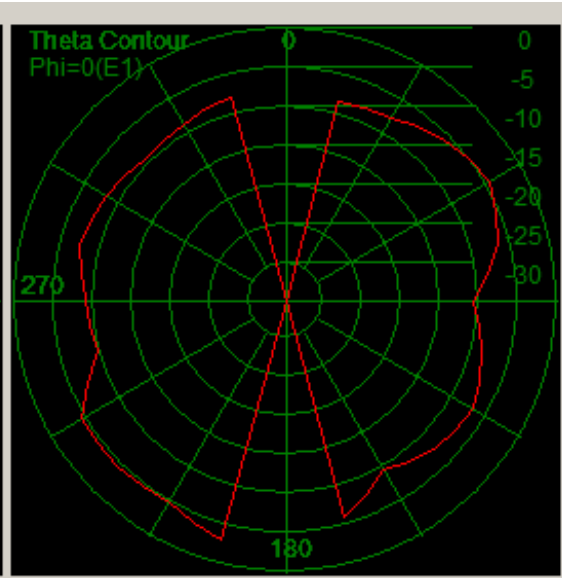
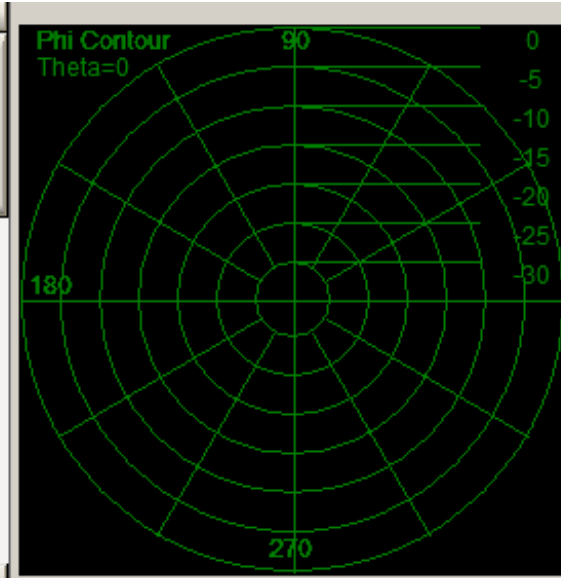
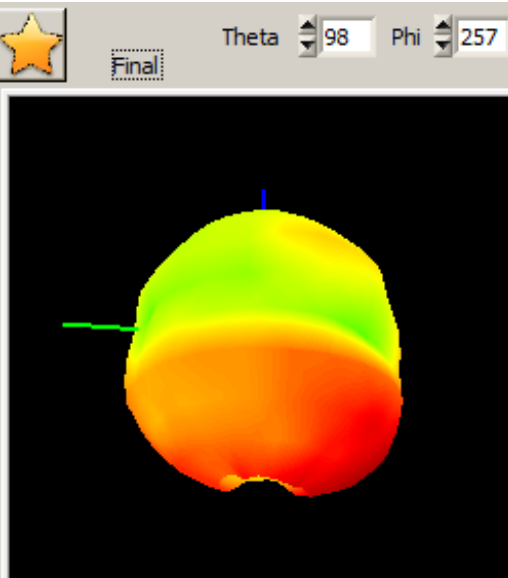
Contour

0

Dgr=0

Total

Save To Excel



Visualization

FREQ-0920.00

View Reset

Contour

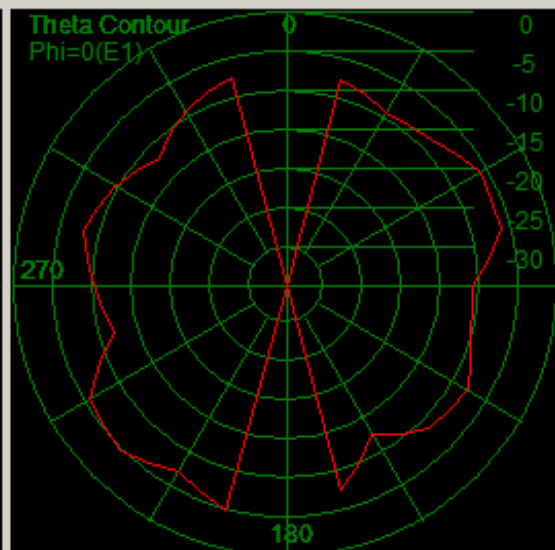
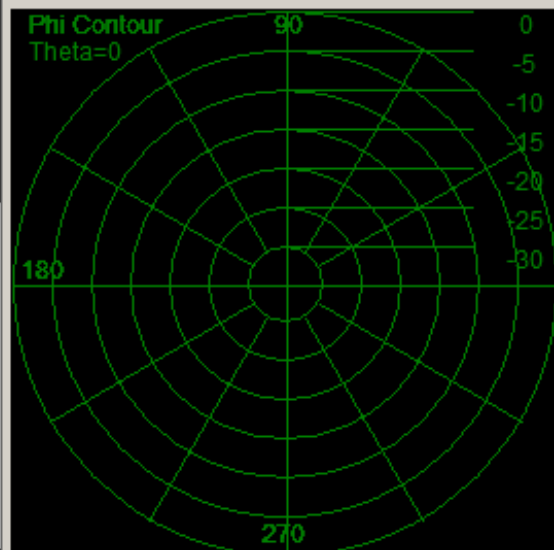
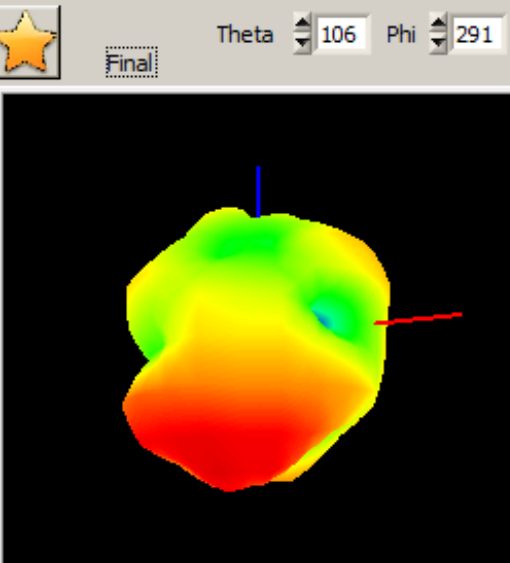
0

Dgr=0

Total

Save To Excel

天线辐射测试数据 (方向图) Antenna radiation test data (direction chart)



Visualization

FREQ-0960.00

View Reset

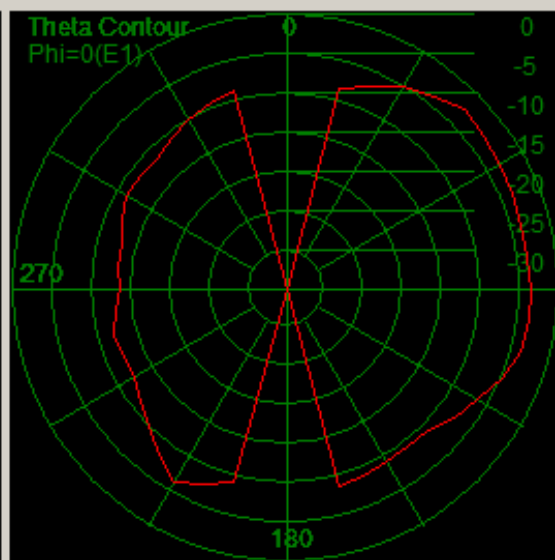
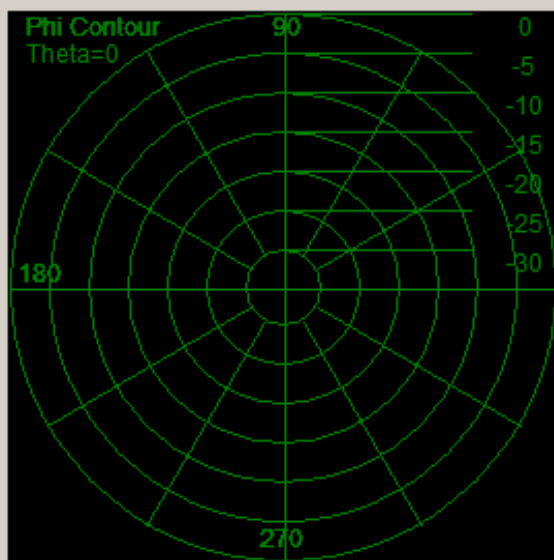
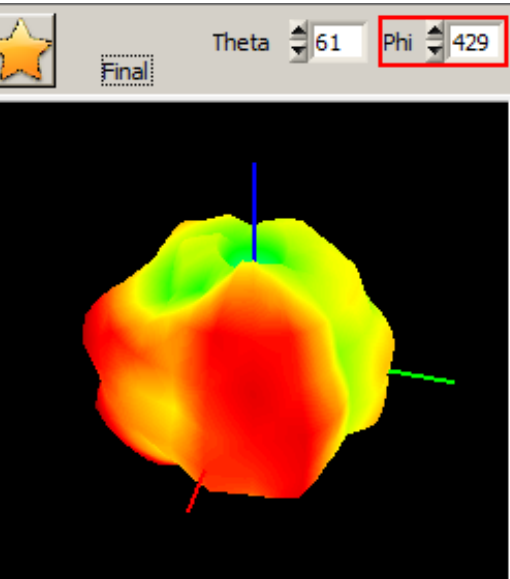
Contour

0

Dgr=0

Total

Save To Excel



Visualization

FREQ-1710.00

View Reset

Contour

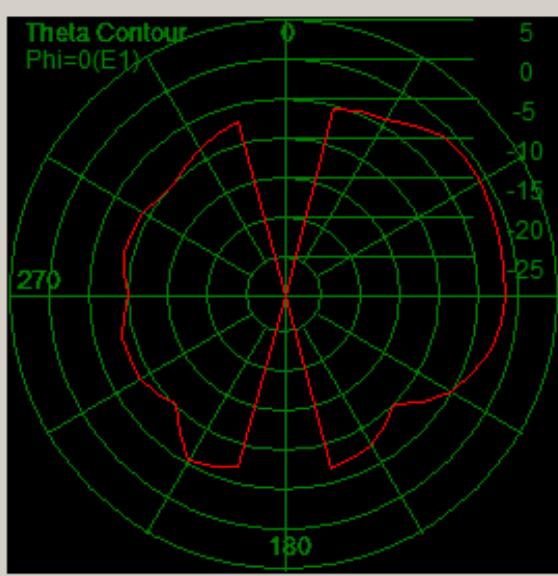
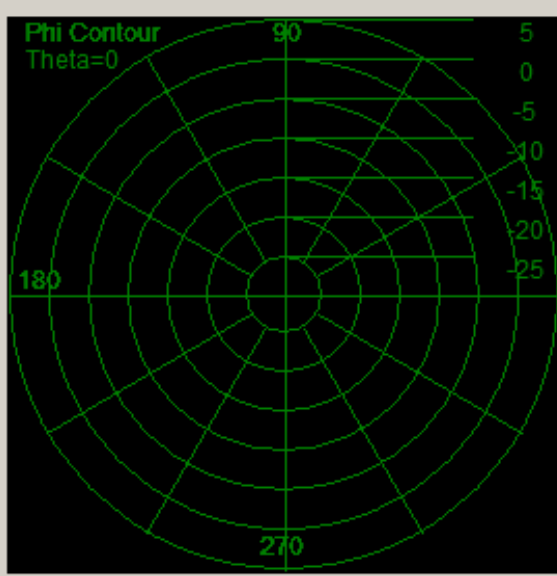
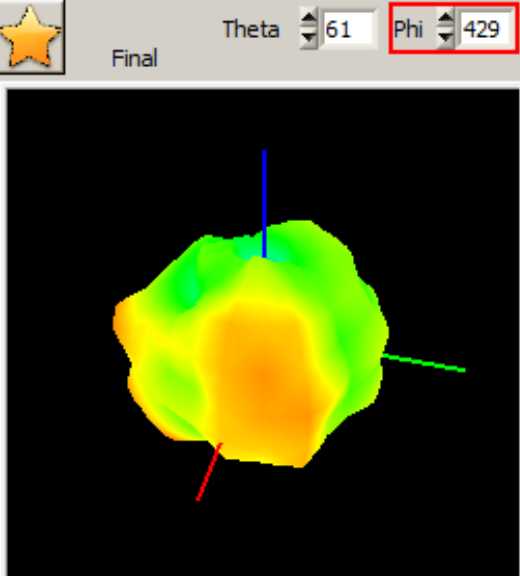
0

Dgr=0

Total

Save To Excel

天线辐射测试数据 (方向图) Antenna radiation test data (direction chart)



Visualization

FREQ-1760.00

View Reset

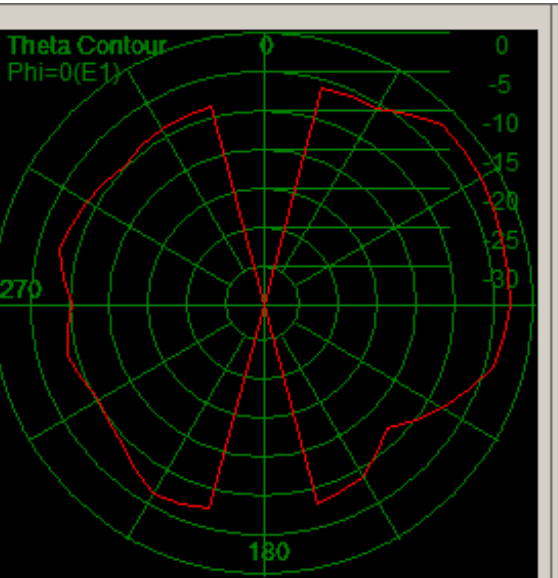
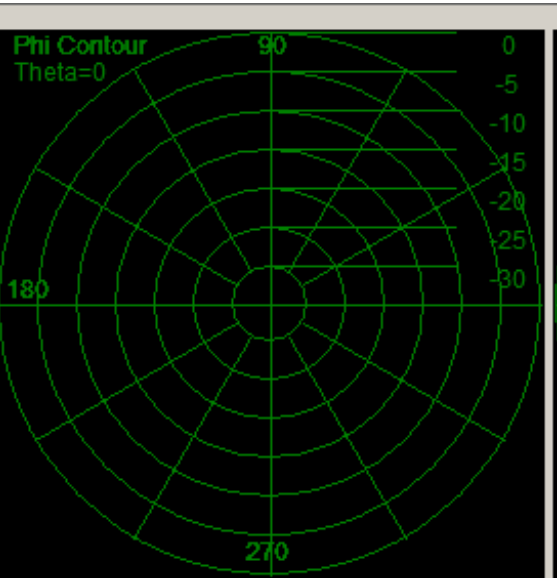
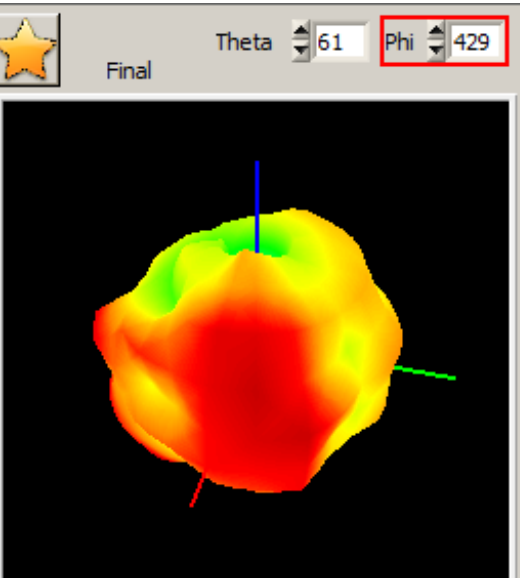
Contour

0

Dgr=0

Total

Save To Excel



Visualization 5

FREQ-1800.00

View Reset

Contour

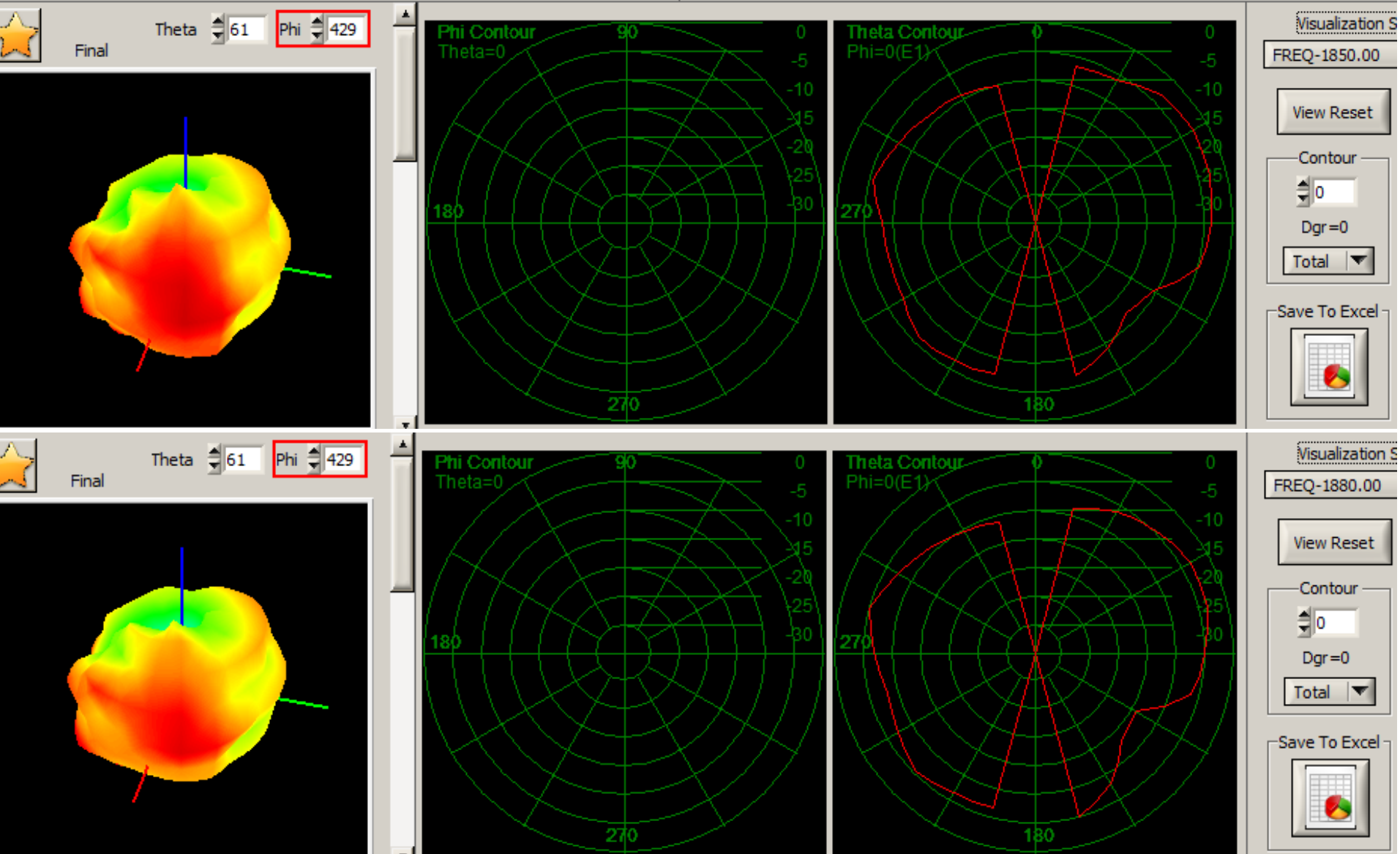
0

Dgr=0

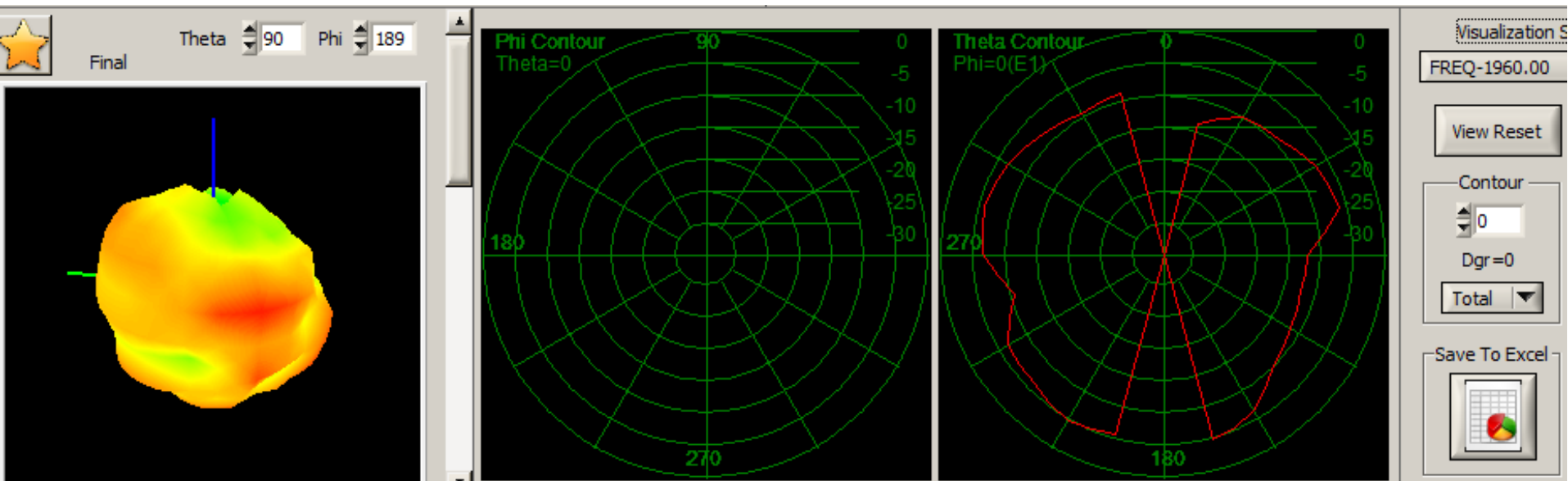
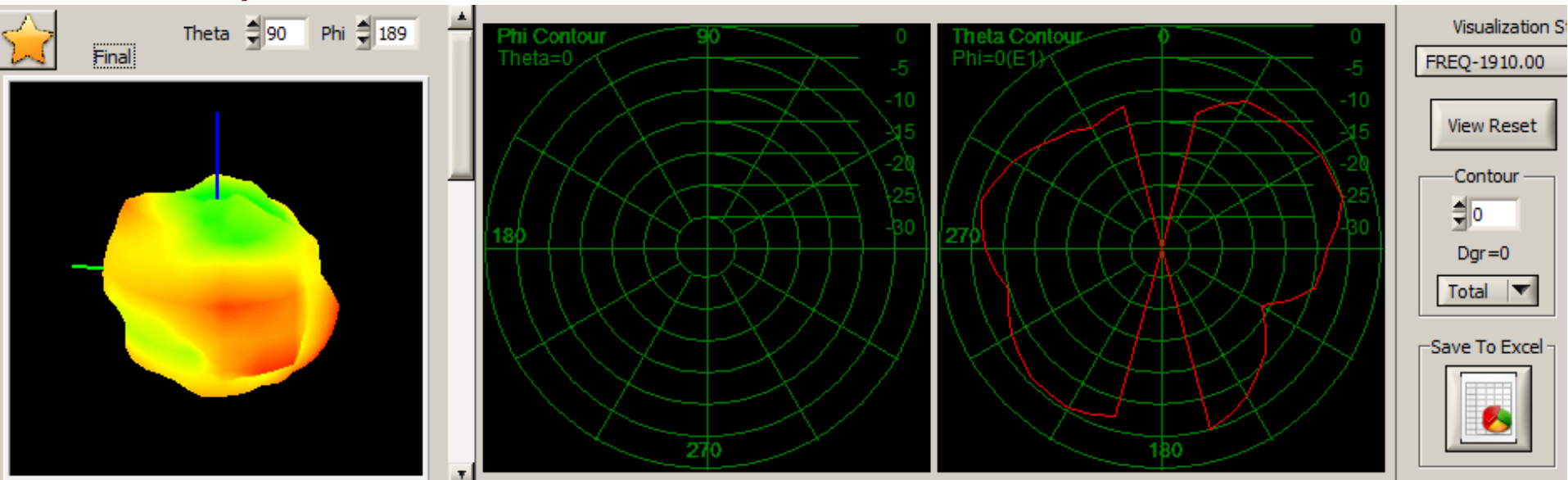
Total

Save To Excel

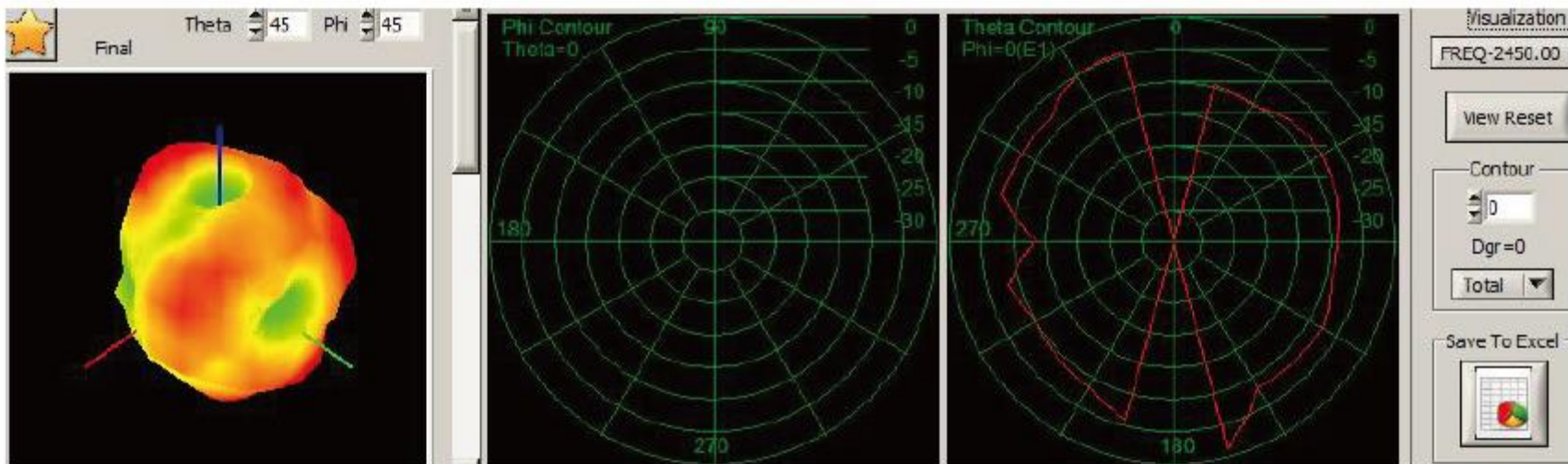
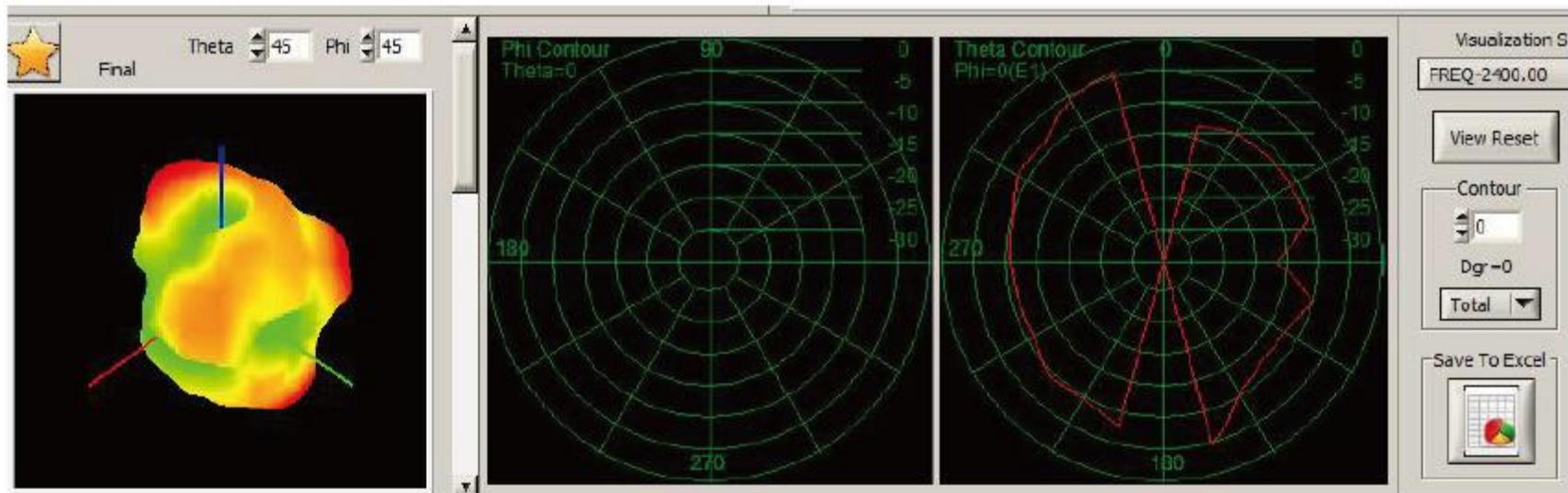
天线辐射测试数据 (方向图) Antenna radiation test data (direction chart)



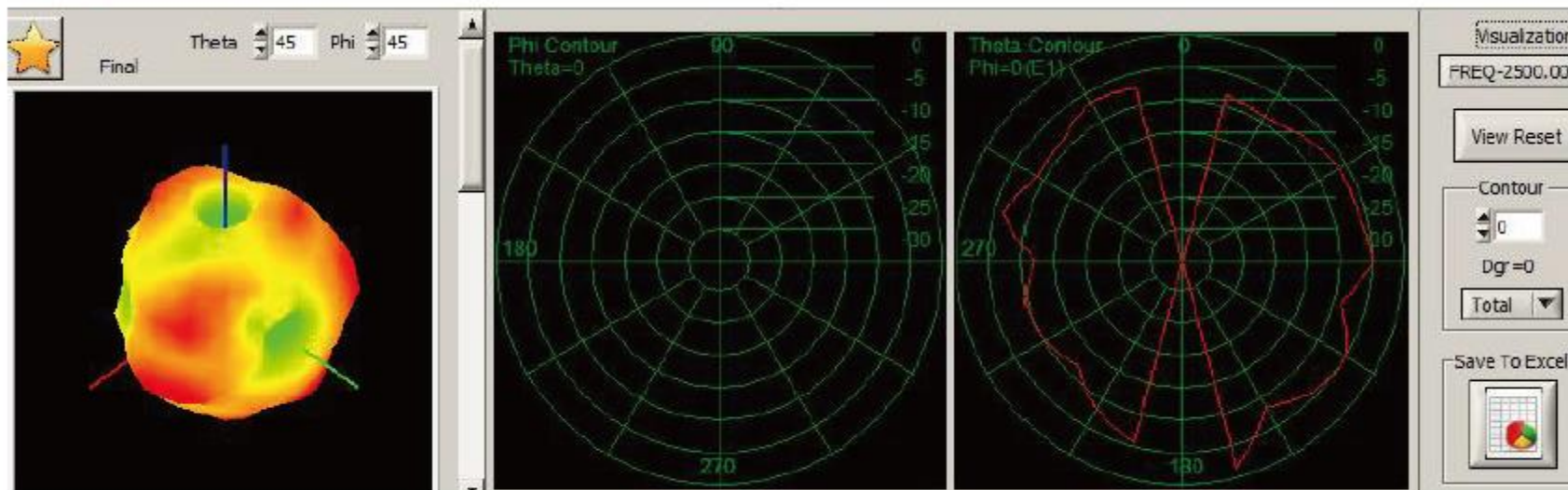
天线辐射测试数据 (方向图) Antenna radiation test data (direction chart)

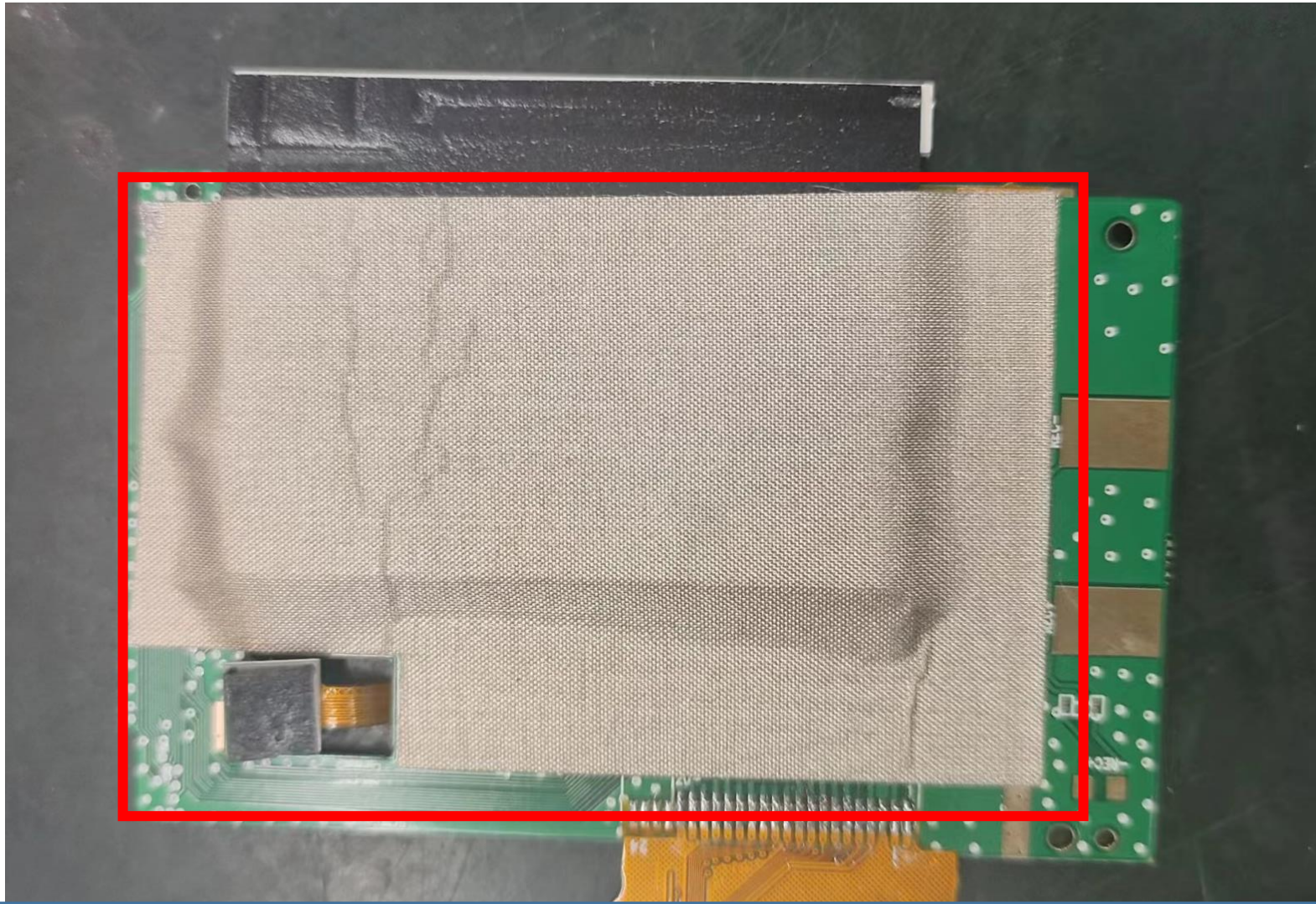


天线辐射测试数据 (BT方向图) Antenna radiation test data (BT direction chart)

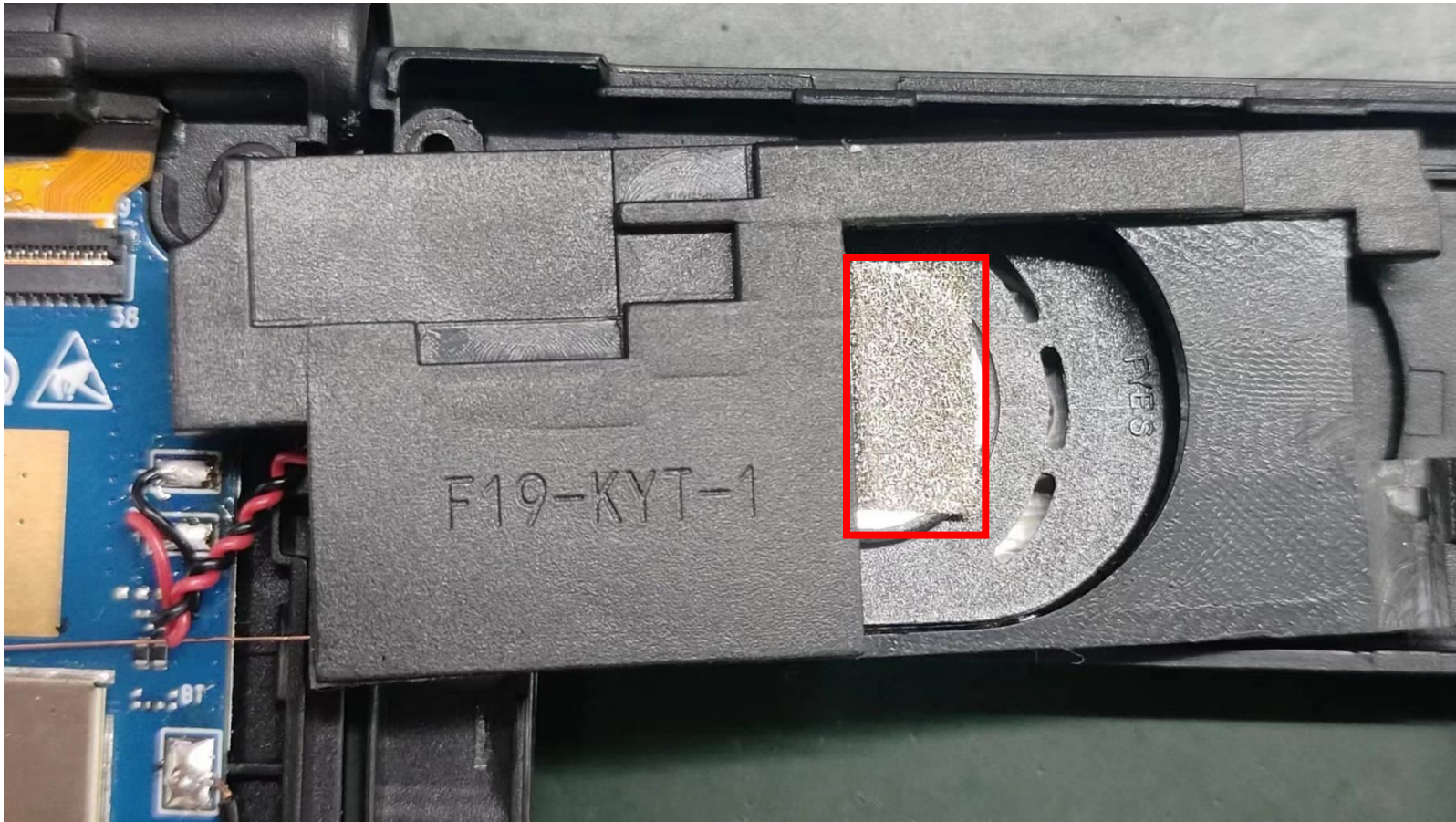


天线辐射测试数据 (BT方向图) Antenna radiation test data (BT direction chart)





上盖PCB的漏铜区域上贴一整块导电布覆盖显示屏An entire conductive cloth is affixed to the copper leakage area of the top PCB to cover the display



喇叭的磁钢用导电泡棉接地 The magnetic steel of the horn is grounded with conductive foam