



FCC EMC Test Report

Report No.: JYTSZ-R01-2400213
Applicant: SWAGTEK
Address of Applicant: 10205 NW 19th Street, STE 101, Miami, FL33172.USA
Equipment Under Test (EUT)
Product Name: 4G BAR PHONE
Model No.: UR5L, R5L
Trade Mark: UNONU, LOGIC
FCC ID: O55241724
Applicable Standards: FCC CFR Title 47 Part 15B
Date of Sample Receipt: 10 May, 2024
Date of Test: 11 May, to 17 Jun., 2024
Date of report Issued: 18 Jun., 2024
Test Result: PASS

Project by: _____

Date: _____

18 Jun., 2024

Reviewed by: _____

Date: _____

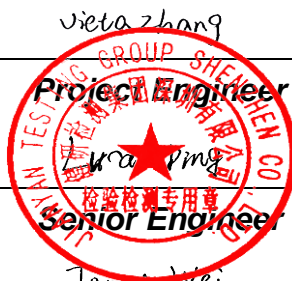
18 Jun., 2024

Approved by: _____

Date: _____

18 Jun., 2024

Manager



This equipment has been shown to be capable of compliance with the applicable technical standards as indicated in the measurement report and was tested in accordance with the measurement procedures specified in above the application standard version. Test results reported herein relate only to the item(s) tested.

This document cannot be reproduced except in full, without prior written approval of the Company. Any unauthorized alteration, forgery or falsification of the content or appearance of this document is unlawful and offenders may be prosecuted to the fullest extent of the law. Unless otherwise stated the results shown in this test report refer only to the sample(s) tested and such sample(s) are retained for 90 days only.

1 Version

Version No.	Date	Description
00	18 Jun., 2024	Original

2 Contents

Page

Cover Page	1
1 Version	2
2 Contents.....	3
3 General Information.....	4
3.1 Client Information	4
3.2 General Description of E.U.T.	4
3.3 Test Mode	4
3.4 Description of Test Auxiliary Equipment	5
3.5 Description of Cable Used.....	5
3.6 Measurement Uncertainty	5
3.7 Additions to, Deviations, or Exclusions from the Method.....	5
3.8 Laboratory Facility	5
3.9 Laboratory Location.....	6
3.10 Test Instruments List	6
4 Measurement Setup and Procedure	7
4.1 Test Setup	7
4.2 Test Procedure	9
5 Test Results.....	10
5.1 Summary	10
5.1.1 Clause and data summary	10
5.1.2 Test Limit.....	10
5.2 Conducted Emission	11
5.3 Radiated Emission	13

3 General Information

3.1 Client Information

Applicant:	SWAGTEK
Address:	10205 NW 19th Street, STE 101, Miami, FL33172.USA
Manufacturer/ Factory:	SWAGTEK
Address:	10205 NW 19th Street, STE 101, Miami, FL33172.USA

3.2 General Description of E.U.T.

Product Name:	4G BAR PHONE
Model No.:	UR5L, R5L
Power Supply:	Rechargeable Li-ion Battery DC3.7V, 3000mAh
AC Adapter:	Model: YD050-002 Input: AC100-240V, 50/60Hz, 0.3A Output: DC 5.0V, 500mA
Remark:	Model No.: R5L, UR5L were identical inside, the electrical circuit design, layout, components used and internal wiring, PCBA, camera, LCD. Battery cell, antenna, etc. are all the same. UR5L and R5L only the brand logo is different, (including GB box, and GB box labels, battery label, and handheld label logos are different).
Test Sample Condition:	The test samples were provided in good working order with no visible defects.

3.3 Test Mode

Operating Mode	Detail Description
PC mode	Keep the EUT in Downloading mode(Worst case)
Charging+Recording mode	Keep the EUT in Charging+Recording mode
Charging+Playing mode	Keep the EUT in Charging+Playing mode
FM mode	Keep the EUT in FM receiver mode
GPS mode	Keep the EUT in GPS receiver mode

The sample was placed 0.8m above the ground plane of 3m chamber. Measurements in both horizontal and vertical polarities were performed. During the test, each emission was maximized by: having the EUT continuously working, investigated all operating modes, rotated about all 3 axis (X, Y & Z) and considered typical configuration to obtain worst position, manipulating interconnecting cables, rotating the turntable, varying antenna height from 1m to 4m in both horizontal and vertical polarizations. The emissions worst-case are shown in Test Results of the following pages.

3.4 Description of Test Auxiliary Equipment

Manufacturer	Description	Model	S/N	FCC ID/DoC
Lenovo	Laptop	ThinkPad T14 Gen 1	SL10Z47277	DoC
HP	Printer	HP LaserJet P1007	VNFP409729	DoC

3.5 Description of Cable Used

Cable Type	Description	Length	From	To
Detached USB Cable	Shielding	1.0m	EUT	PC/Adapter
Detached headset cable	Unshielded	1.2m	EUT	Headset

3.6 Measurement Uncertainty

Parameter	Expanded Uncertainty (Confidence of 95%(U = 2Uc(y)))
Conducted Emission for LISN (9kHz ~ 150kHz)	3.57 dB
Conducted Emission for LISN (150kHz ~ 30MHz)	3.14 dB
Radiated Emission (30MHz ~ 200MHz) (3m SAC)	4.6 dB
Radiated Emission (200MHz ~ 1000MHz) (3m SAC)	5.8 dB
Radiated Emission (1GHz ~ 6GHz) (3m SAC)	4.5 dB
Radiated Emission (6GHz ~ 18GHz) (3m SAC)	4.7 dB

Note: All the measurement uncertainty value were shown with a coverage $k=2$ to indicate 95% level of confidence. The measurement data show herein meets or exceeds the CISPR measurement uncertainty values specified in CISPR 16-4-2 and can be compared directly to specified limit to determine compliance.

3.7 Additions to, Deviations, or Exclusions from the Method

No

3.8 Laboratory Facility

The test facility is recognized, certified, or accredited by the following organizations:

- **FCC - Designation No.: CN1211**

JianYan Testing Group Shenzhen Co., Ltd. has been accredited as a testing laboratory by FCC(Federal Communications Commission). The test firm Registration No. is 727551.

- **ISED – CAB identifier.: CN0021**

The 3m Semi-anechoic chamber and 10m Semi-anechoic chamber of JianYan Testing Group Shenzhen Co., Ltd. has been Registered by Certification and Engineering Bureau of Industry Canada for radio equipment testing with Registration No.: 10106A-1.

- **CNAS - Registration No.: CNAS L15527**

JianYan Testing Group Shenzhen Co., Ltd. is accredited to ISO/IEC 17025:2017 General Requirements for the Competence of Testing and Calibration laboratories for the competence of testing. The Registration No. is CNAS L15527.

- **A2LA - Registration No.: 4346.01**

This laboratory is accredited in accordance with the recognized International Standard ISO/IEC 17025:2017 General requirements for the competence of testing and calibration laboratories. The test scope can be found as below link: <https://portal.a2la.org/scopepdf/4346-01.pdf>

3.9 Laboratory Location

JianYan Testing Group Shenzhen Co., Ltd.
 Address: No.101, Building 8, Innovation Wisdom Port, No.155 Hongtian Road, Huangpu Community, Xinqiao Street, Bao'an District, Shenzhen, Guangdong, People's Republic of China.
 Tel: +86-755-23118282, Fax: +86-755-23116366
 Email: info-JYTee@lets.com, Website: <http://jyt.lets.com>

3.10 Test Instruments List

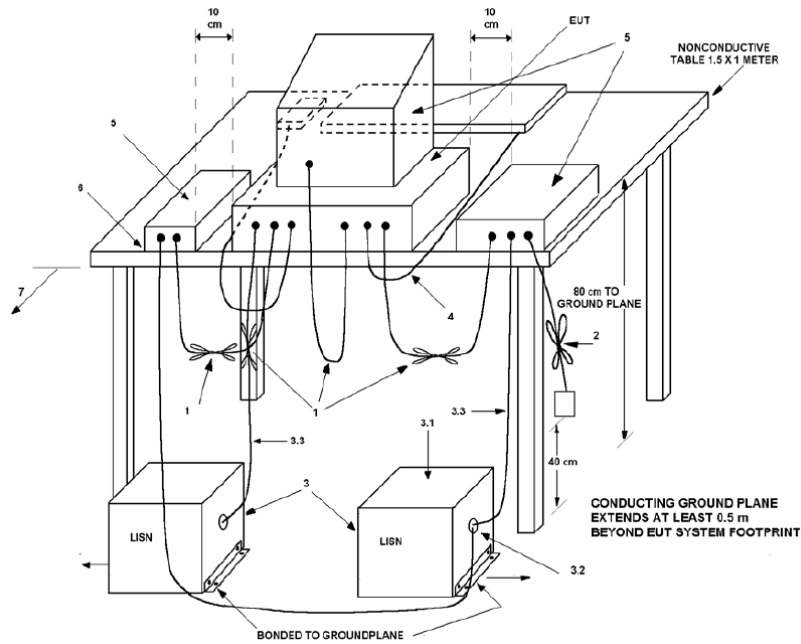
Radiated Emission(3m SAC):					
Test Equipment	Manufacturer	Model No.	Manage No.	Cal. Date (mm-dd-yy)	Cal. Due date (mm-dd-yy)
3m SAC	ETS	9m*6m*6m	WXJ001-1	04-14-2021	04-13-2026
BiConiLog Antenna	Schwarzbeck	VULB9163	WXJ002	01-09-2024	01-08-2025
Horn Antenna	Schwarzbeck	BBHA9120D	WXJ002-2	01-05-2024	01-04-2025
Pre-amplifier (30MHz ~ 1GHz)	Schwarzbeck	BBV9743B	WXJ001-2	12-27-2023	12-26-2024
Pre-amplifier (1GHz ~ 18GHz)	SKET	LNPA_0118G-50	WXJ001-3	12-27-2023	12-26-2024
EMI Test Receiver	Rohde & Schwarz	ESRP7	WXJ003-1	12-27-2023	12-26-2024
Spectrum Analyzer	Rohde & Schwarz	FSP 30	WXJ004	12-27-2023	12-26-2024
Coaxial Cable (30MHz ~ 1GHz)	JYTSZ	JYT3M-1G-NN-8M	WXG001-4	01-17-2024	01-16-2025
Coaxial Cable (1GHz ~ 18GHz)	JYTSZ	JYT3M-18G-NN-8M	WXG001-5	01-17-2024	01-16-2025
Band Reject Filter Group	Tonscend	JS0806-F	WXJ089	N/A	
Test Software	Tonscend	TS+	Version: 3.0.0.1		

Conducted Emission:					
Test Equipment	Manufacturer	Model No.	Manage No.	Cal. Date (mm-dd-yy)	Cal. Due date (mm-dd-yy)
EMI Test Receiver	Rohde & Schwarz	ESR3	WXJ003-2	07-05-2023	07-04-2024
LISN	Schwarzbeck	NSLK 8127	QCJ001-13	12-27-2023	12-26-2024
LISN	Rohde & Schwarz	ESH3-Z5	WXJ005-1	12-27-2023	12-26-2024
LISN Coaxial Cable (9kHz ~ 30MHz)	JYTSZ	JYTCE-1G-NN-2M	WXG003-1	01-17-2024	01-16-2025
RF Switch	TOP PRECISION	RSU0301	WXG003	N/A	
Test Software	AUDIX	E3	Version: 6.110919b		

4 Measurement Setup and Procedure

4.1 Test Setup

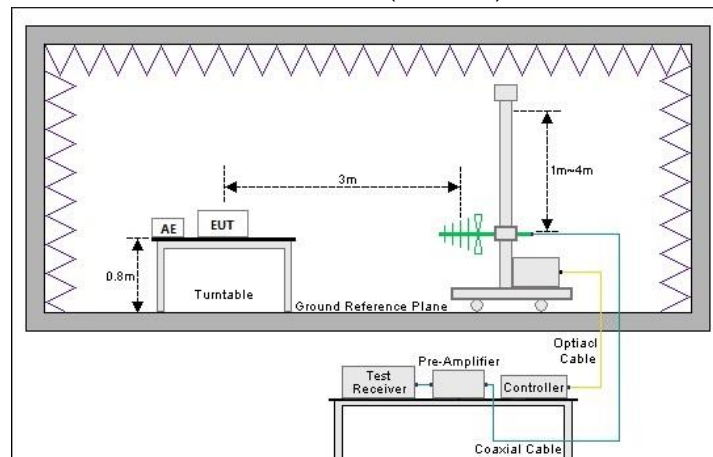
1) Conducted emission measurement:

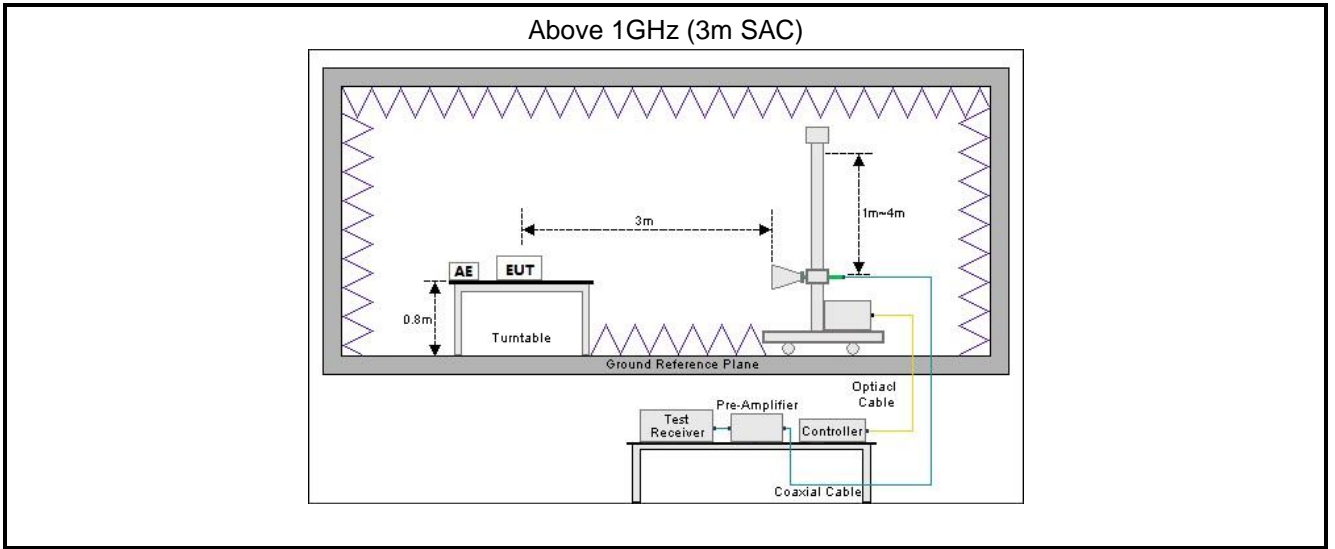


Note: The detailed descriptions please refer to Figure 8 of ANSI C63.4:2014.

2) Radiated emission measurement:

Below 1GHz (3m SAC)





4.2 Test Procedure

Test method	Test step
Conducted emission	<ol style="list-style-type: none"> 1. The E.U.T and simulators are connected to the main power through a line impedance stabilization network (L.I.S.N.). This provides a 50ohm/50uH coupling impedance for the measuring equipment. 2. The peripheral devices are also connected to the main power through a LISN that provides a 50ohm/50uH coupling impedance with 50ohm termination. (Please refer to the block diagram of the test setup and photographs). 3. Both sides of A.C. line are checked for maximum conducted interference. In order to find the maximum emission, the relative positions of equipment and all of the interface cables must be changed according to ANSI C63.4 on conducted measurement.
Radiated emission	<p>For below 1GHz:</p> <ol style="list-style-type: none"> 1. The EUT was placed on the tabletop of a rotating table 0.8 m the ground at a 3 m semi anechoic chamber. The measurement distance from the EUT to the receiving antenna is 3 m. 2. EUT works in each mode of operation that needs to be tested, and having the EUT continuously working, respectively on 3 axis (X, Y & Z) and considered typical configuration to obtain worst position. The highest signal levels relative to the limit shall be determined by rotating the EUT from 0° to 360° and with varying the measurement antenna height between 1 m and 4 m in vertical and horizontal polarizations. 3. Open the test software to control the test antenna and test turntable. Perform the test, save the test results, and export the test data. <p>For above 1GHz:</p> <ol style="list-style-type: none"> 1. The EUT was placed on the tabletop of a rotating table 0.8 m the ground at a 3 m fully anechoic room. The measurement distance from the EUT to the receiving antenna is 3 m. 2. EUT works in each mode of operation that needs to be tested, and having the EUT continuously working, respectively on 3 axis (X, Y & Z) and considered typical configuration to obtain worst position. The highest signal levels relative to the limit shall be determined by rotating the EUT from 0° to 360° and with varying the measurement antenna height between 1 m and 4 m in vertical and horizontal polarizations. 3. Open the test software to control the test antenna and test turntable. Perform the test, save the test results, and export the test data.

5 Test Results

5.1 Summary

5.1.1 Clause and data summary

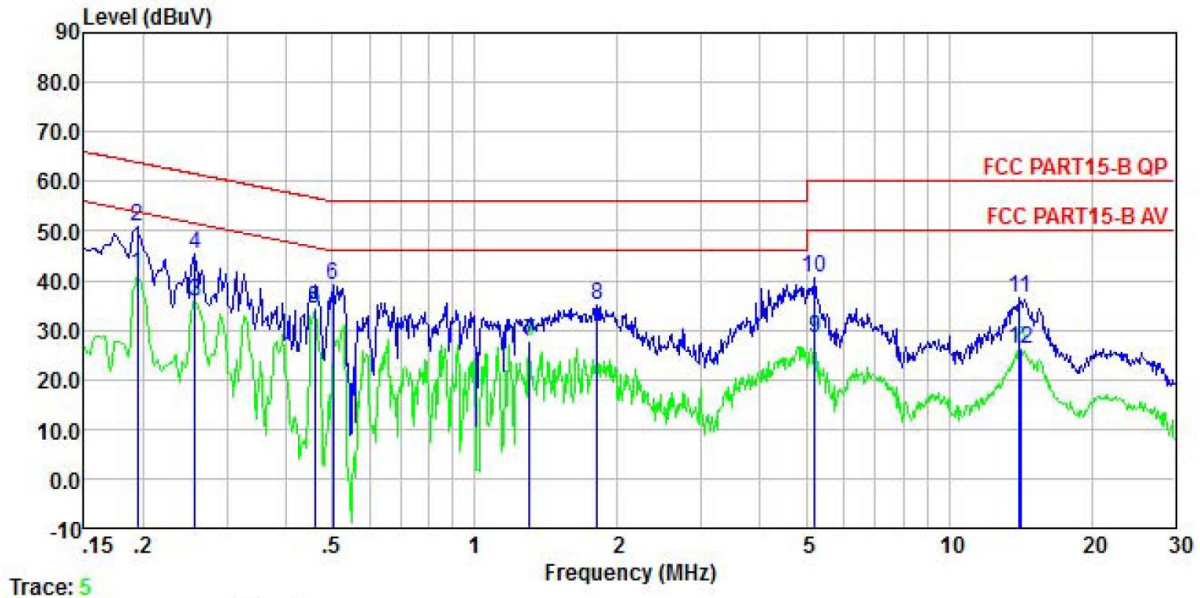
Test items	Standard clause	Test data	Result
Conducted Emission	Part 15.107	See Section 5.2	Pass
Radiated Emission	Part 15.109	See Section 5.3	Pass
Remark: 1. The EUT is a Class B digital device. 2. Pass: The EUT complies with the essential requirements in the standard. 3. N/A: Not Applicable.			
Test Method:	ANSI C63.4:2014		

5.1.2 Test Limit

Test items	Limit					
Conducted Emission	Frequency (MHz)	Class A Limit (dB μ V)		Class B Limit (dB μ V)		
		Quasi-Peak	Average	Quasi-Peak	Average	
	0.15 – 0.5	79	66	66 to 56 <small>Note 1</small>	56 to 46 <small>Note 1</small>	
	0.5 – 5	73	60	56	46	
	5 – 30	73	60	60	50	
Note 1: The limit level in dB μ V decreases linearly with the logarithm of frequency. Note 2: The more stringent limit applies at transition frequencies.						
Radiated Emission	Frequency (MHz)	Class A Limit (dB μ V/m)		Class B Limit (dB μ V/m)		
		Quasi-Peak @ 3m	Quasi-Peak @ 10m	Quasi-Peak @ 3m	Quasi-Peak @ 10m	
	30 – 88	49.0	39.0	40.0	30.0	
	88 – 216	53.5	43.5	43.5	33.5	
	216 – 960	56.0	46.0	46.0	36.0	
	960 – 1000	60.0	50.0	54.0	44.0	
	Note: The more stringent limit applies at transition frequencies.					
	Frequency	Class A Limit (dB μ V/m) @ 3m		Class B Limit (dB μ V/m) @ 3m		
		Average	Peake	Average	Peake	
	Above 1 GHz	60.0	80.0	54.0	74.0	
Note: The measurement bandwidth shall be 1 MHz or greater.						

5.2 Conducted Emission

Product name:	4G BAR PHONE	Product model:	UR5L
Test by:	Kiran Zeng	Test mode:	PC mode
Test frequency:	150 kHz ~ 30 MHz	Phase:	Line
Test voltage:	AC 120 V/60 Hz		



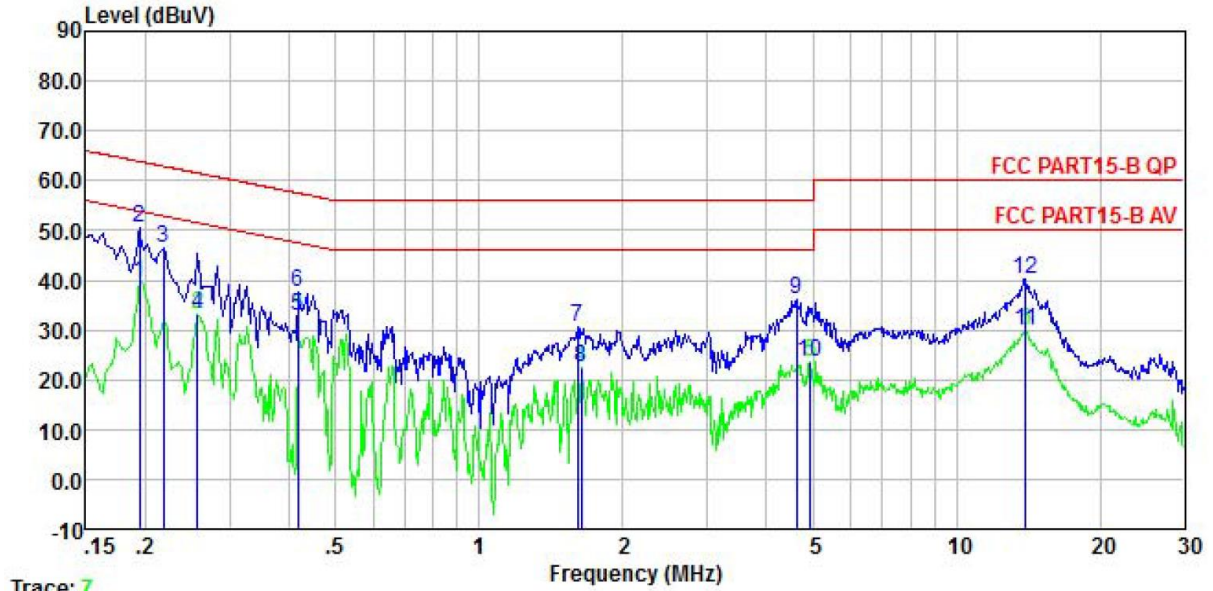
Trace: 5

	Read Freq	Read Level	LISN Factor	Aux Factor	Aux2 Factor	Cable Loss	Level	Limit Line	Over Limit	Remark
	MHz	dBuV	dB	dB	dB	dB	dBuV	dBuV	dB	
1	0.194	31.20	0.20	0.00	9.88	0.03	41.31	53.84	-12.53	Average
2	0.194	40.89	0.20	0.00	9.88	0.03	51.00	63.84	-12.84	QP
3	0.258	25.51	0.20	0.00	9.88	0.01	35.60	51.51	-15.91	Average
4	0.258	35.09	0.20	0.00	9.88	0.01	45.18	61.51	-16.33	QP
5	0.459	24.19	0.20	0.00	9.88	0.03	34.30	46.71	-12.41	Average
6	0.502	28.87	0.20	0.00	9.88	0.03	38.98	56.00	-17.02	QP
7	1.303	17.31	0.20	0.00	9.88	0.11	27.50	46.00	-18.50	Average
8	1.810	24.89	0.20	0.00	9.88	0.19	35.16	56.00	-20.84	QP
9	5.221	18.03	0.20	0.00	9.89	0.09	28.21	50.00	-21.79	Average
10	5.221	30.31	0.20	0.00	9.89	0.09	40.49	60.00	-19.51	QP
11	14.063	26.21	0.28	0.00	9.93	0.12	36.54	60.00	-23.46	QP
12	14.213	15.83	0.29	0.00	9.93	0.12	26.17	50.00	-23.83	Average

Remark:

1. Level = Read level + LISN Factor + Cable Loss.

Product name:	4G BAR PHONE	Product model:	UR5L
Test by:	Kiran Zeng	Test mode:	PC mode
Test frequency:	150 kHz ~ 30 MHz	Phase:	Neutral
Test voltage:	AC 120 V/60 Hz		



Trace: 7

	Read	LISN	Aux	Aux2	Cable	Limit	Over		
Freq	Level	Factor	Factor	Factor	Loss	Level	Line	Limit	Remark
MHz	dBuV	dB	dB	dB	dB	dBuV	dBuV	dB	
1	0.194	29.52	0.20	0.00	9.88	0.03	39.63	53.84	-14.21 Average
2	0.194	40.51	0.20	0.00	9.88	0.03	50.62	63.84	-13.22 QP
3	0.219	36.27	0.20	0.00	9.88	0.03	46.38	62.88	-16.50 QP
4	0.258	23.19	0.20	0.00	9.88	0.01	33.28	51.51	-18.23 Average
5	0.417	22.59	0.20	0.00	9.88	0.04	32.71	47.51	-14.80 Average
6	0.417	27.61	0.20	0.00	9.88	0.04	37.73	57.51	-19.78 QP
7	1.610	20.32	0.27	0.00	9.88	0.16	30.63	56.00	-25.37 QP
8	1.636	12.26	0.27	0.00	9.88	0.16	22.57	46.00	-23.43 Average
9	4.622	25.70	0.30	0.00	9.89	0.09	35.98	56.00	-20.02 QP
10	4.952	13.19	0.30	0.00	9.89	0.09	23.47	46.00	-22.53 Average
11	13.989	19.52	0.40	0.00	9.93	0.12	29.97	50.00	-20.03 Average
12	13.989	29.68	0.40	0.00	9.93	0.12	40.13	60.00	-19.87 QP

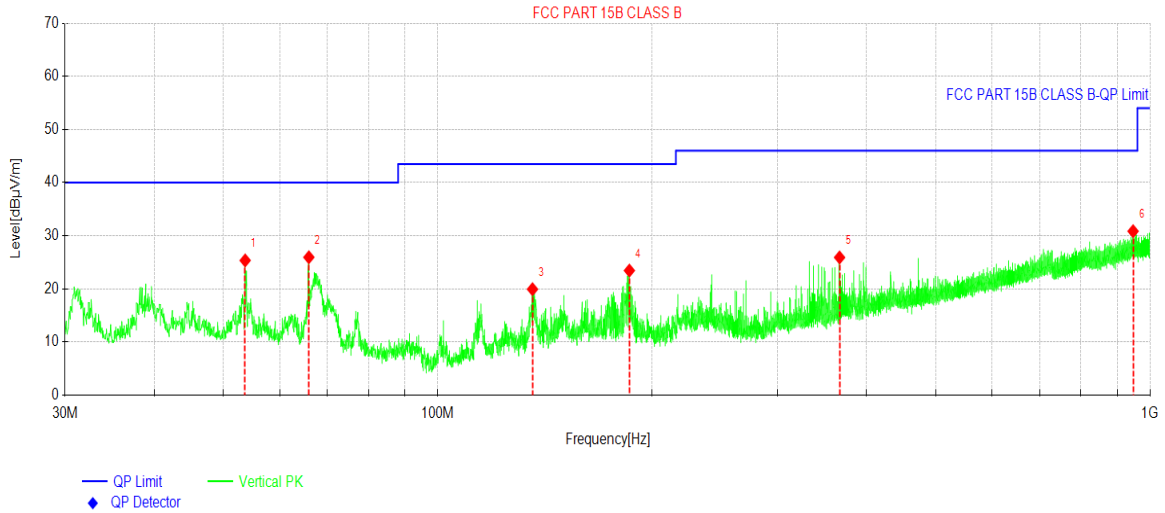
Remark:

1. Level = Read level + LISN Factor + Cable Loss.

5.3 Radiated Emission

Below 1GHz:

Product Name:	4G BAR PHONE	Product Model:	UR5L
Test By:	Robin Gu	Test mode:	PC mode
Test Frequency:	30 MHz ~ 1 GHz	Polarization:	Vertical
Test Voltage:	AC 120V/60Hz		

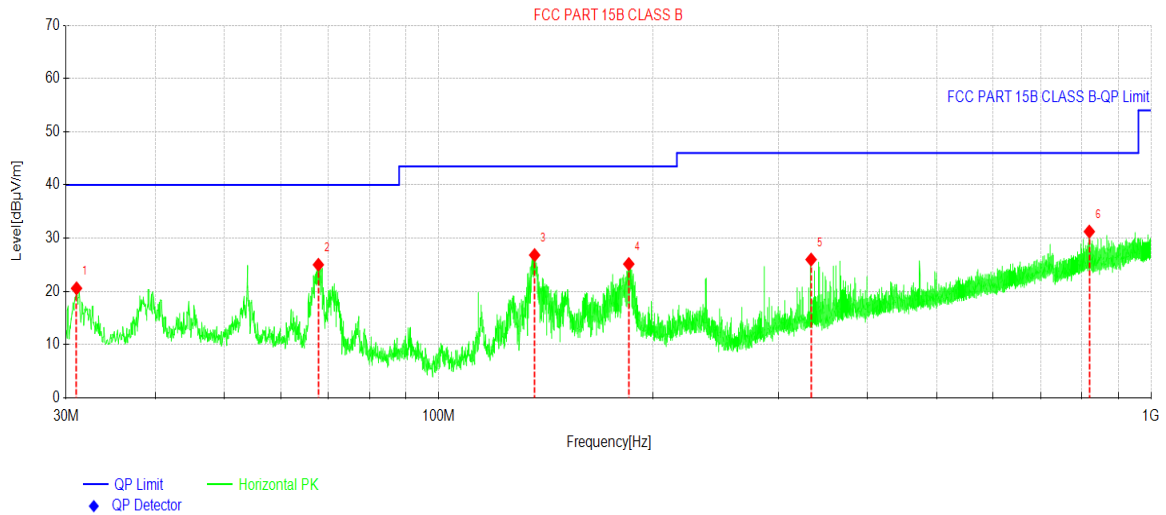


Suspected Data List								
NO.	Freq. [MHz]	Reading [dBµV/m]	Factor [dB]	Level [dBµV/m]	Limit [dBµV/m]	Margin [dB]	Trace	Polarity
1	53.6692	39.49	-14.14	25.35	40.00	14.65	PK	Vertical
2	65.9403	41.80	-15.86	25.94	40.00	14.06	PK	Vertical
3	135.8808	34.30	-14.37	19.93	43.50	23.57	PK	Vertical
4	185.8383	39.74	-16.30	23.44	43.50	20.06	PK	Vertical
5	366.6068	37.90	-11.99	25.91	46.00	20.09	PK	Vertical
6	946.8898	29.95	0.89	30.84	46.00	15.16	PK	Vertical

Remark:

1. Level = Reading + Factor(Antenna Factor + Cable Loss – Preamplifier Factor).

Product Name:	4G BAR PHONE	Product Model:	UR5L
Test By:	Robin Gu	Test mode:	PC mode
Test Frequency:	30 MHz ~ 1 GHz	Polarization:	Horizontal
Test Voltage:	AC 120V/60Hz		



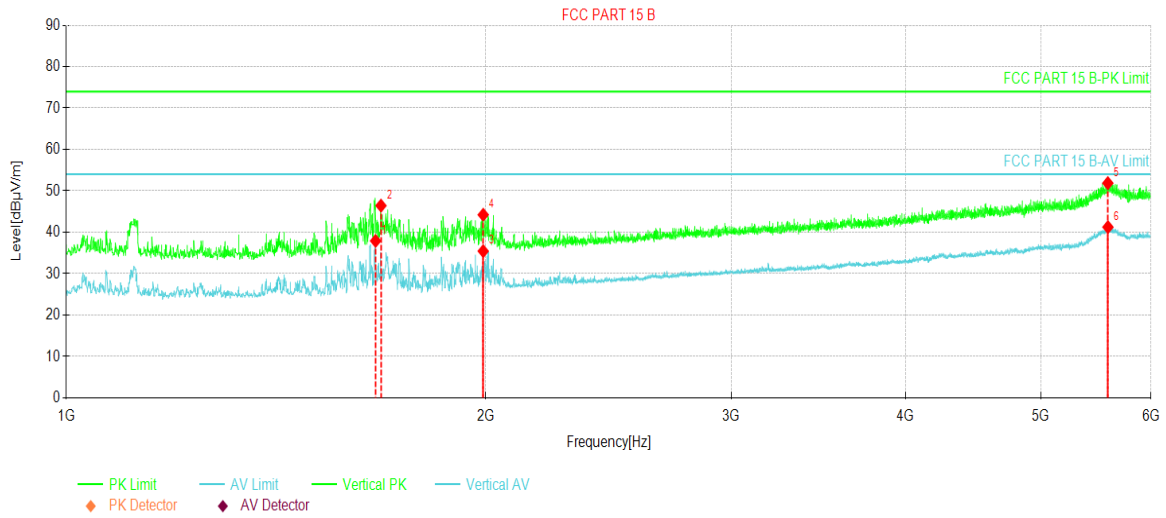
Suspected Data List								
NO.	Freq. [MHz]	Reading[dBµV/m]	Factor [dB]	Level [dBµV/m]	Limit [dBµV/m]	Margin [dB]	Trace	Polarity
1	31.0186	35.39	-14.81	20.58	40.00	19.42	PK	Horizontal
2	67.7834	41.31	-16.30	25.01	40.00	14.99	PK	Horizontal
3	136.3658	41.23	-14.41	26.82	43.50	16.68	PK	Horizontal
4	184.8682	41.42	-16.27	25.15	43.50	18.35	PK	Horizontal
5	333.2857	38.74	-12.76	25.98	46.00	20.02	PK	Horizontal
6	819.3285	32.14	-0.90	31.24	46.00	14.76	PK	Horizontal

Remark:

1. Level = Reading + Factor(Antenna Factor + Cable Loss – Pre-amplifier Factor).

Above 1GHz:

Product Name:	4G BAR PHONE	Product Model:	UR5L
Test By:	Robin Gu	Test mode:	PC mode
Test Frequency:	1000 MHz ~ 6000 MHz	Polarization:	Vertical
Test Voltage:	AC 120V/60Hz		

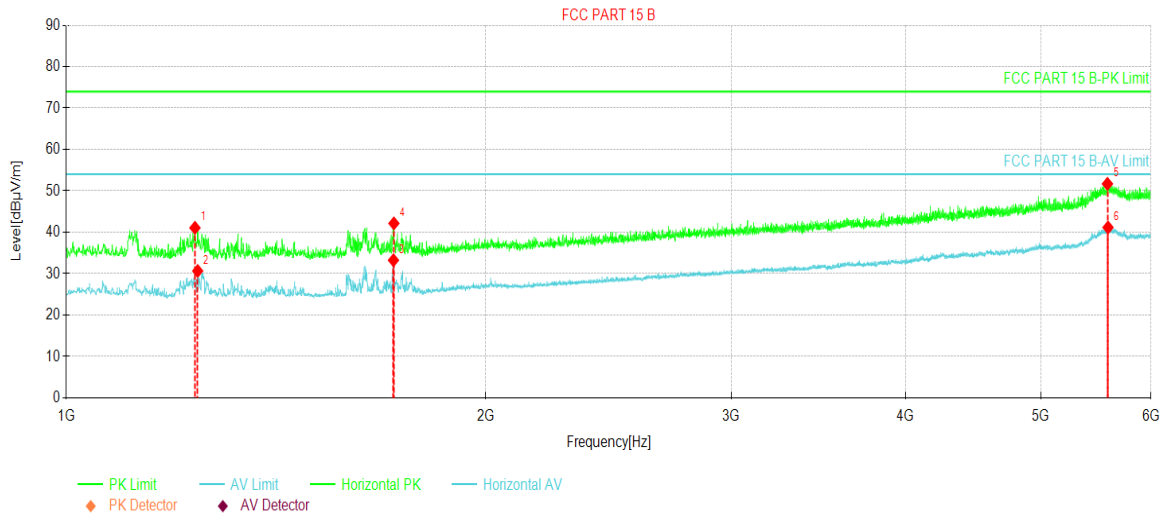


Suspected Data List								
NO.	Freq. [MHz]	Reading [dBµV/m]	Level [dBµV/m]	Factor [dB]	Limit [dBµV/m]	Margin [dB]	Trace	Polarity
1	1666.8750	60.52	37.92	-22.60	54.00	16.08	AV	Vertical
2	1681.8750	68.99	46.43	-22.56	74.00	27.57	PK	Vertical
3	1991.2500	56.24	35.44	-20.80	54.00	18.56	AV	Vertical
4	1991.2500	65.03	44.23	-20.80	74.00	29.77	PK	Vertical
5	5587.5000	56.44	51.87	-4.57	74.00	22.13	PK	Vertical
6	5588.1250	45.81	41.25	-4.56	54.00	12.75	AV	Vertical

Remark:

1. Level = Reading + Factor(Antenna Factor + Cable Loss – Preamplifier Factor).

Product Name:	4G BAR PHONE	Product Model:	UR5L
Test By:	Robin Gu	Test mode:	PC mode
Test Frequency:	1000 MHz ~ 6000 MHz	Polarization:	Horizontal
Test Voltage:	AC 120V/60Hz		



Suspected Data List								
NO.	Freq. [MHz]	Reading [dBµV/m]	Level [dBµV/m]	Factor [dB]	Limit [dBµV/m]	Margin [dB]	Trace	Polarity
1	1236.8750	64.23	41.07	-23.16	74.00	32.93	PK	Horizontal
2	1242.5000	53.80	30.66	-23.14	54.00	23.34	AV	Horizontal
3	1716.8750	55.71	33.25	-22.46	54.00	20.75	AV	Horizontal
4	1718.1250	64.60	42.15	-22.45	74.00	31.85	PK	Horizontal
5	5583.7500	56.32	51.69	-4.63	74.00	22.31	PK	Horizontal
6	5589.3750	45.70	41.16	-4.54	54.00	12.84	AV	Horizontal

Remark:

1. Level = Reading + Factor(Antenna Factor + Cable Loss – Preamplifier Factor).

-----End of report-----