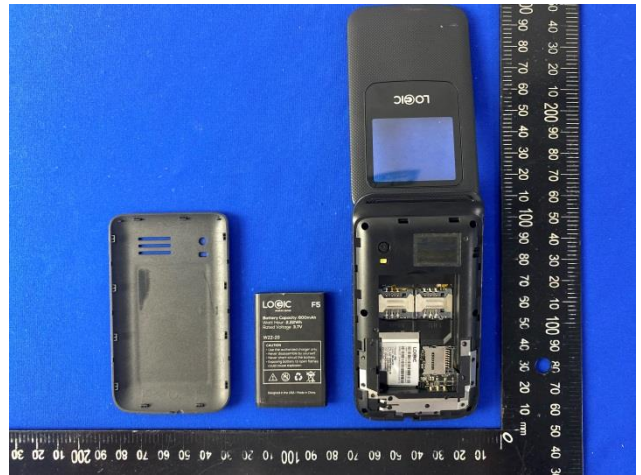
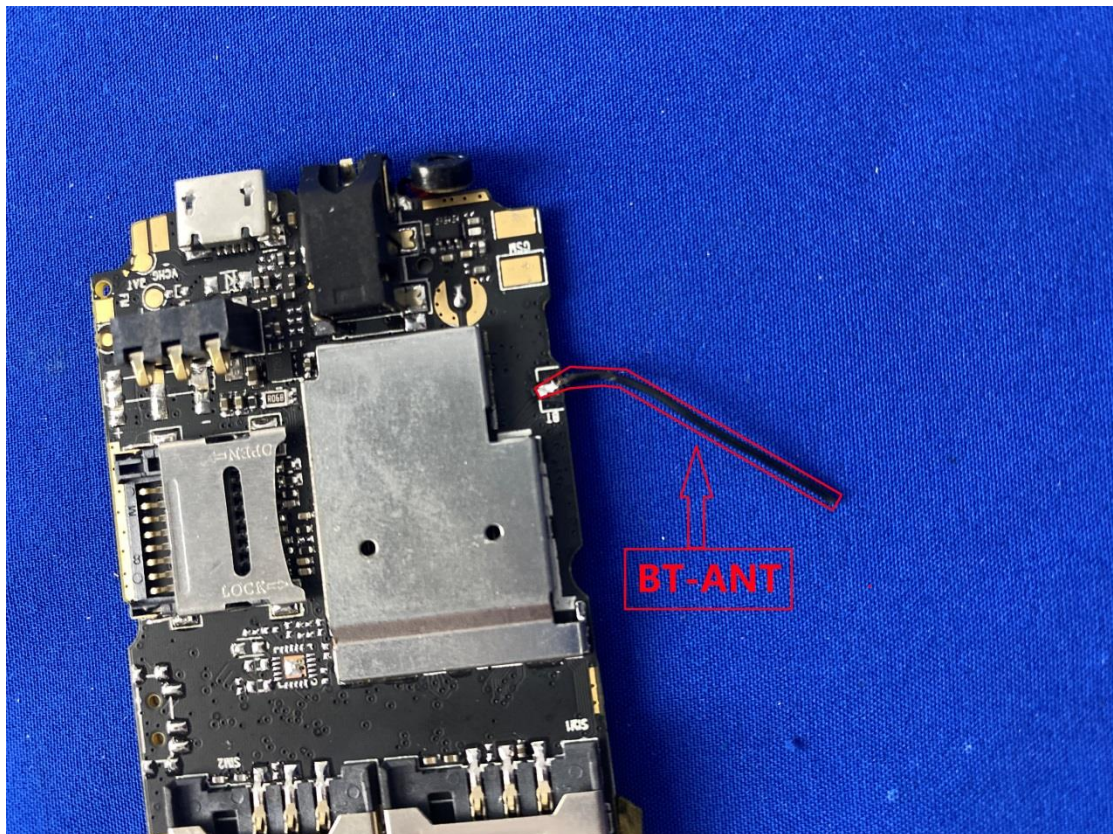
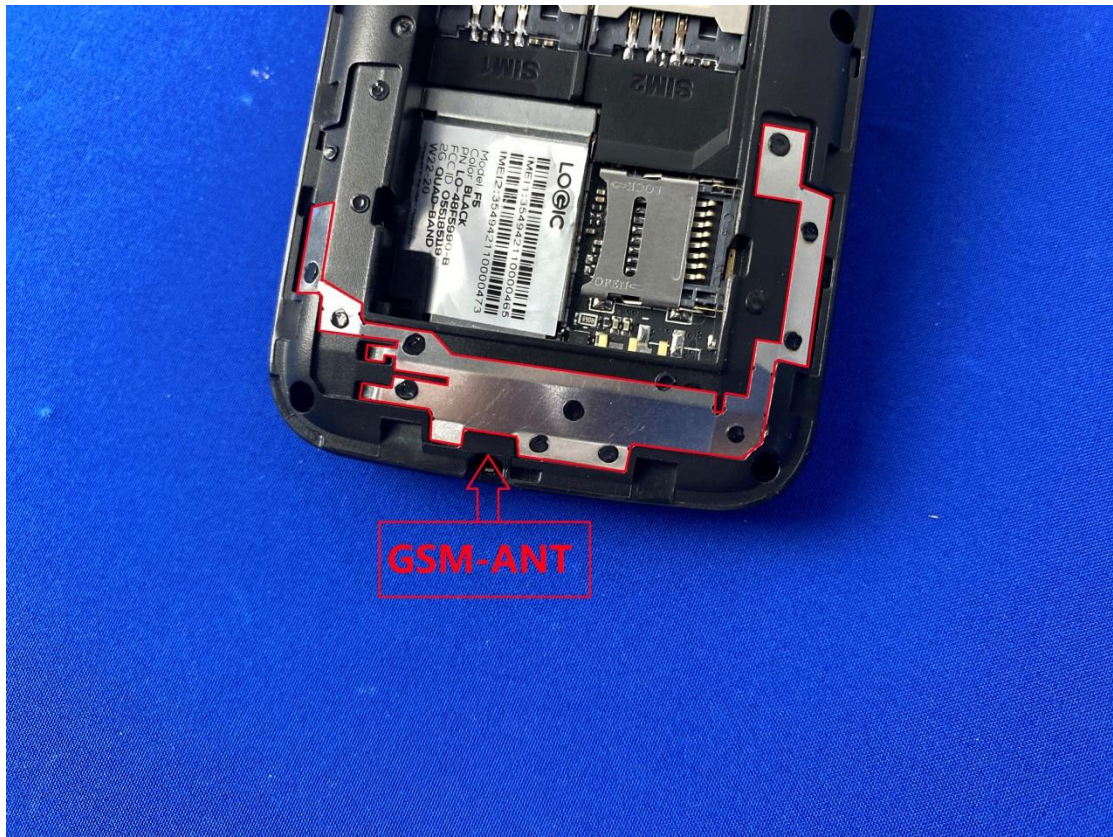


# EUT Photos (Model: F5)

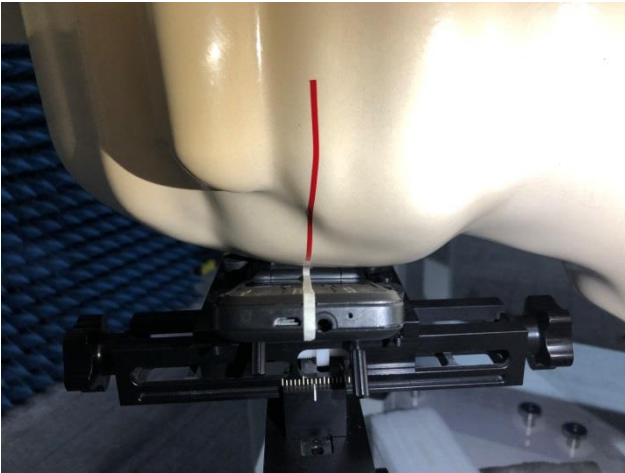


# EUT Antenna Locations

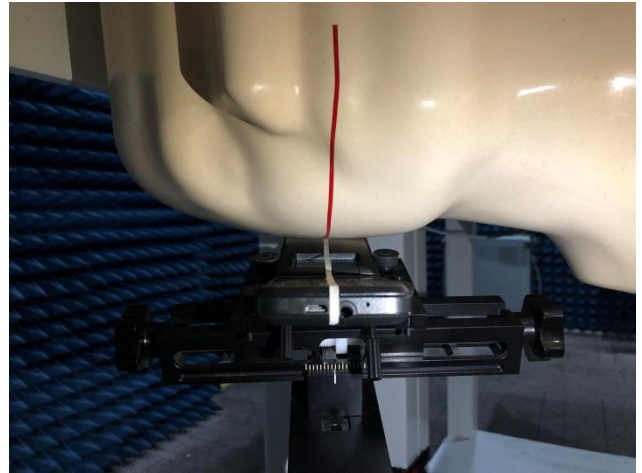


# SAR Test Setup Photos

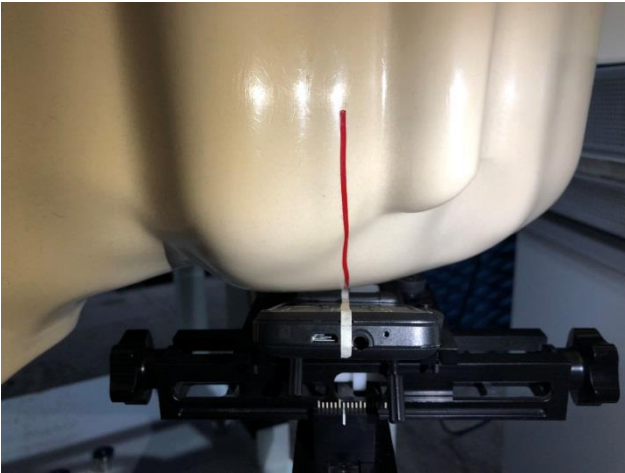
## Head



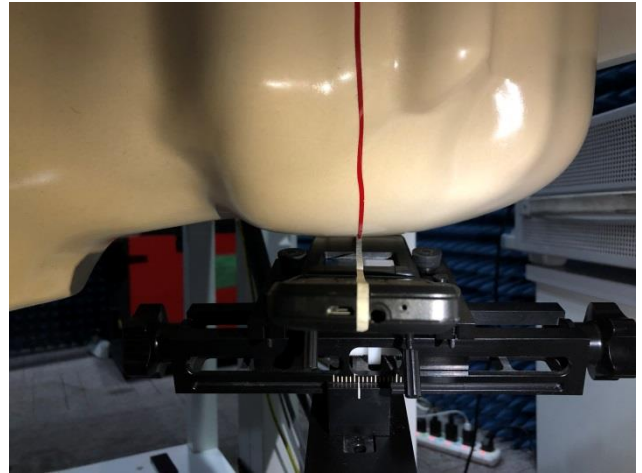
Right Cheek



Right Tilted

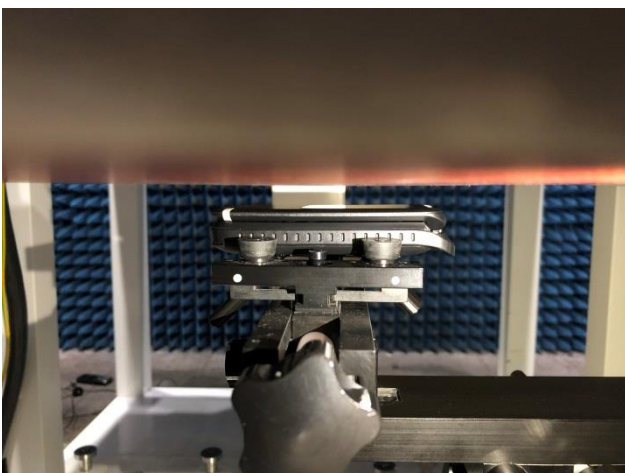


Left Cheek

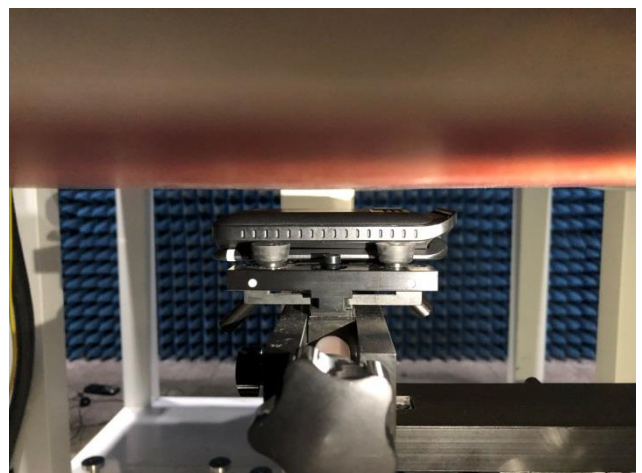


Left Tilted

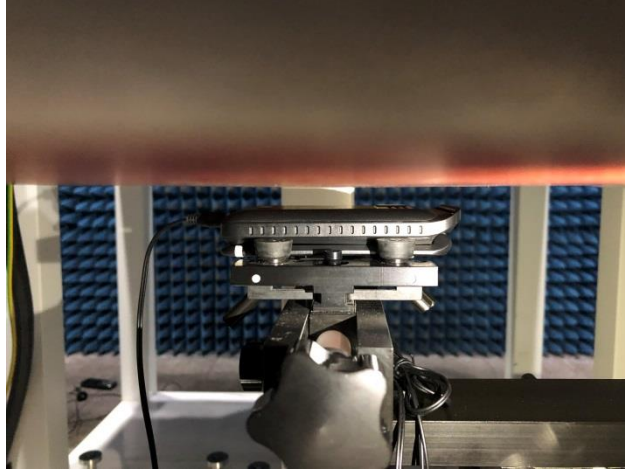
## Body



Front side (10mm)

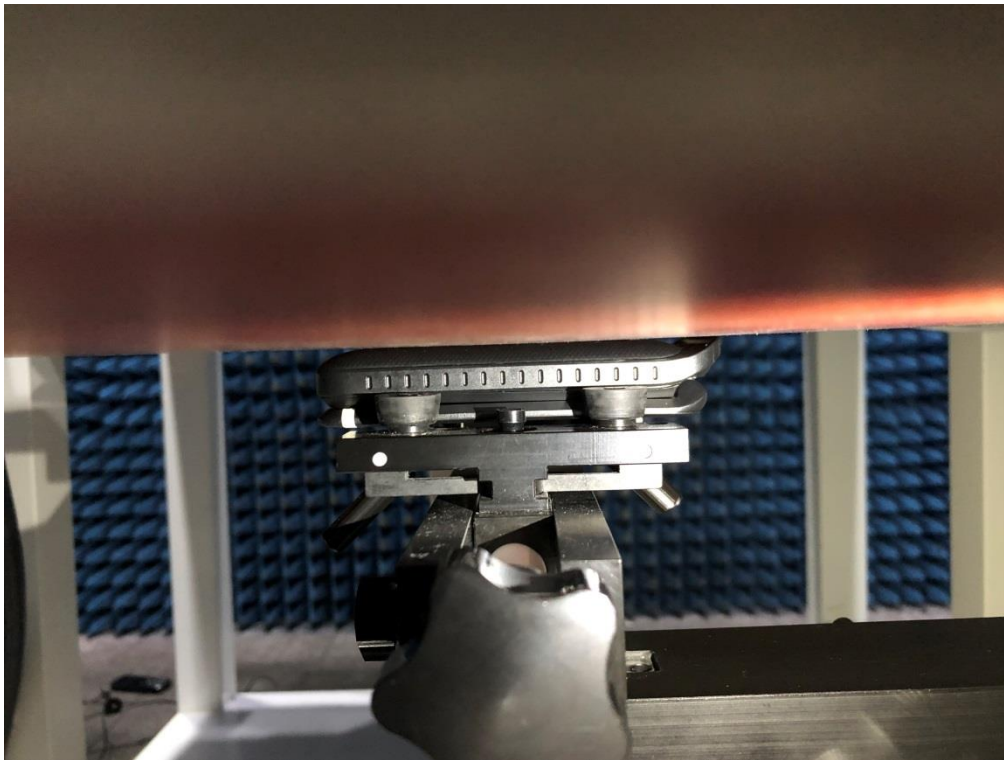


Back side(10mm)



Back with Headset side(10mm)

## EUT holder Perturbation Evaluation Test Setup Photos



DUT with device holder (DUT direct contact with the phantom)



DUT without device holder (DUT direct contact with the phantom)