

ANWEI commnuication Equipment Co.,Ltd

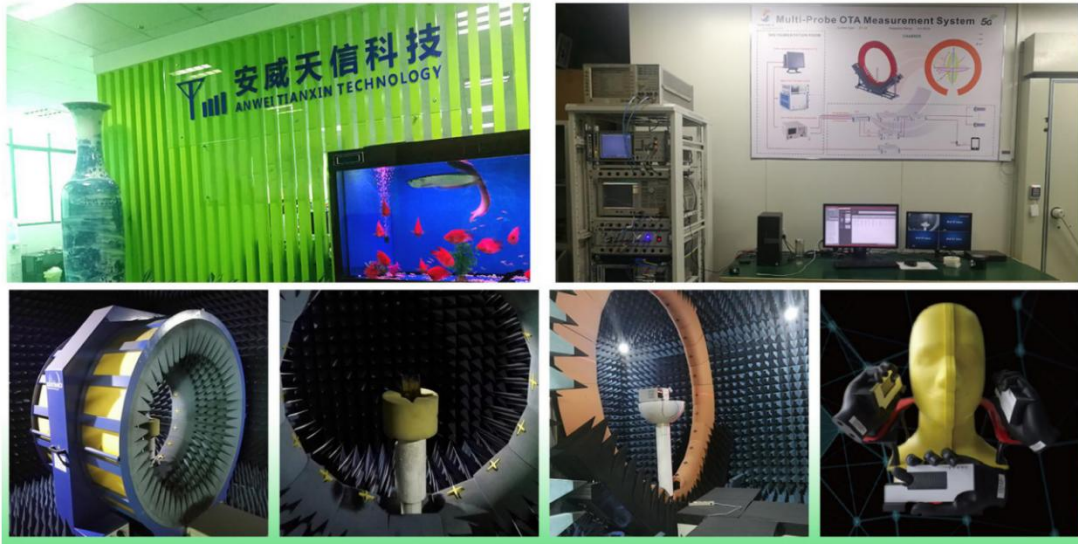
Specification

Customer	weitu	Specs	F11L
Part Number		Frequency Band	G4P+W2/5/8/+FDD/2/4/7/12/17/28A/B
Color	black	Edition	REV:A
Salesperson	Mr.Xie	Design	Tang di
Structure	Tan yun lin	Confirm	
Date	2022/9/22	Signing Date	

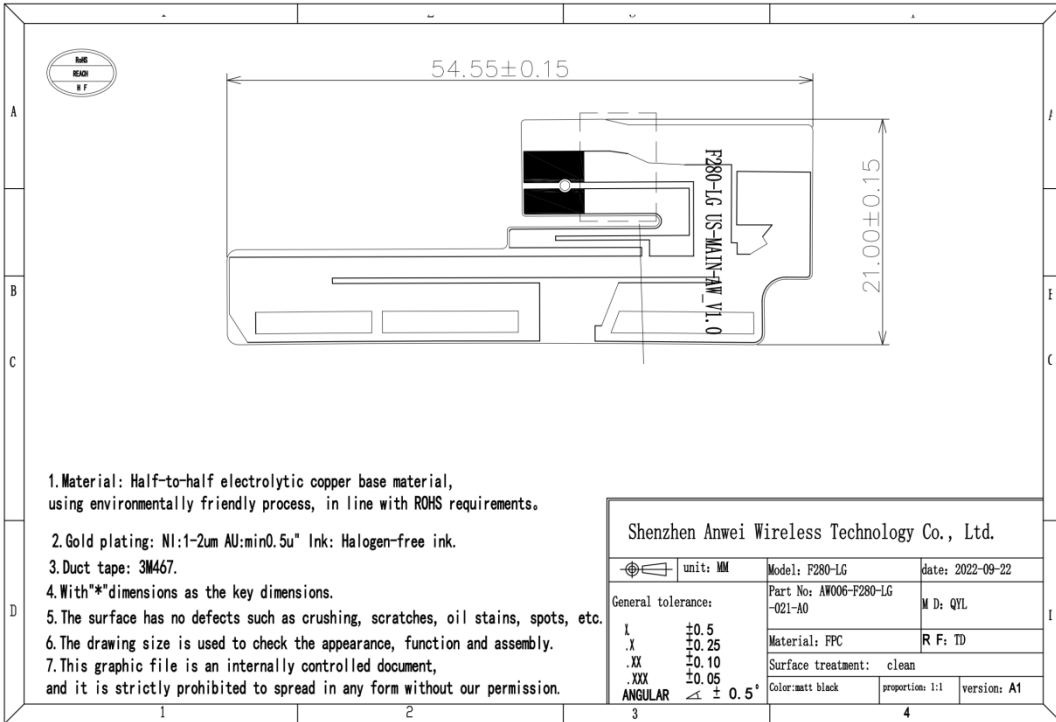
Customer confirmation:

Join hands to create the future

Project development environment



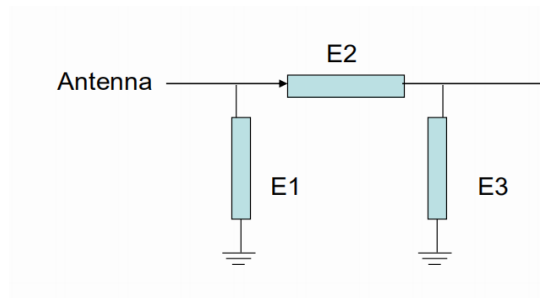
MIMO antenna 0:



(Working frequency band:

G4P+W2/5/8/+FDD/2/4/7/12/17/28A/B

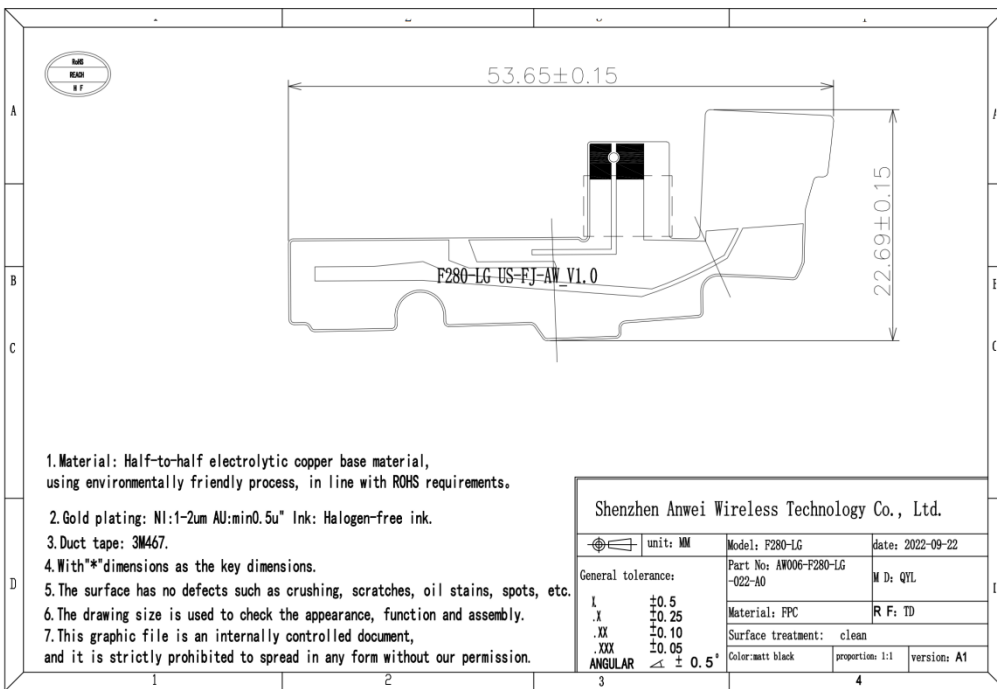
Matching network:



E1=27NH

E2=3.3pf

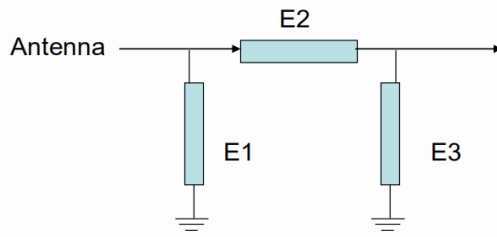
MIMO antenna 1



(Working frequency

band:G4P+W2/5/8/+FDD/2/4/7/12/17/28A/B

Matching network



E2=0Ω

ANWEI ANT TRP&TIS parameter Summary of F11L

OPEN	Channel	TRP (dBm)	TIS (dBm)
FDD B2	L	18.3	-92.35
	M	18.5	-92.47
	H	18.34	-92.12
FDD B4	L	18.5	-92.15
	M	18.3	-92.03
	H	18.36	-91.53
FDD B7	L	17.4	-92.67
	M	17.42	-92.43
	H	17.4	-92.51
FDD B12	L	16.36	-90.82
	M	16.47	-90.57
	H	16.4	-90.60
FDD B17	L	16.51	-90.61
	M	16.12	-90.22
	H	16.8	-90.35
FDD B28A	L	16.46	-90.73
	M	16.57	-90.46
	H	16.53	-90.57
FDD B28B	L	16.75	-90.33
	M	16.56	-90.26
	H	17.54	-90.40

	Channel	TRP (dBm)	TIS (dBm)
WCDMA B2	L	18.5	-102.37
	M	18.54	-102.12
	H	18.5	-102.23
WCDMA B8	L	18.53	-102.22
	M	17.3	-102.13
	H	16.52	-102.17
WCDMA B5	L	18.51	-103.53
	M	18.3	-103.46
	1	18.73	-103.33
GSM 850	L	26.57	-104.28
	M	27.5	-104.44
	H	28.3	-103.56
GSM 900	L	28.5	-102.61
	M	27.3	-102.32
	H	27.3	-102.57
DCS 1800	L	25.83	-102.36
	M	25.5	-102.24
	H	25.3	-102.33
PCS 1900	L	25.73	-102.60
	M	25.5	-102.48
	H	25.85	-102.55

Antenna gain:

	Channel	Unit (dbi)
2.4G	L	-1.4
	M	-1.7
	H	-1.45

