

ANWEI communication Equipment Co.,Ltd

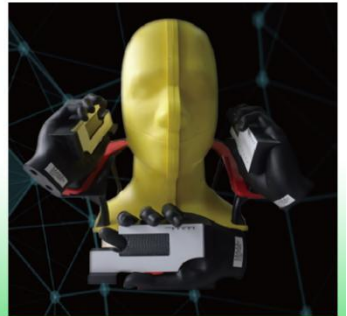
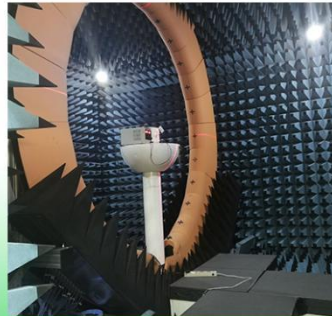
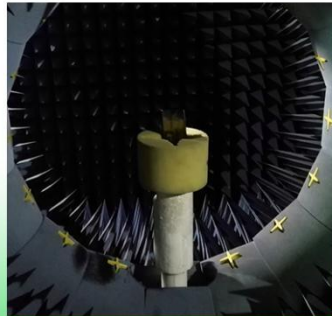
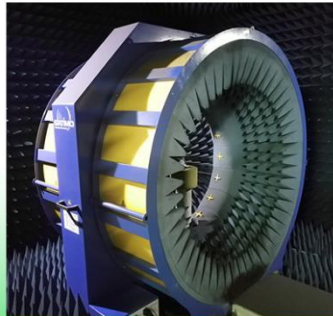
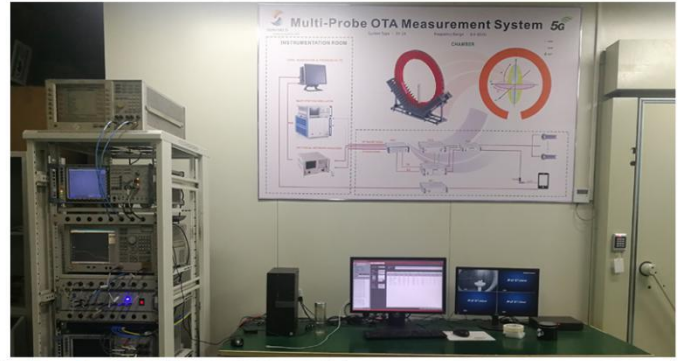
APPROVAL SHEET

Customer	weitu	Specs	F280
Part Number		Frequency Band	2G:GSM850/1900 & BT
Color	Black	Edition	REV:A0
Salesperson	Mr.Xie	Design	huanghe
Structure	QIN YUN LIN	Confirm	
Date	2023/5/18	Signing Date	

Customer confirmation:

ANT Manufacturers: ANWEI communication Equipment Co.,Ltd
Address:2nd Floor, East Block, Building 5, Yifenghua Innovation Industrial Park, Huaning Road, Dalang Street, Longhua District, Shenzhen City, Guangdong Province

Project development environment



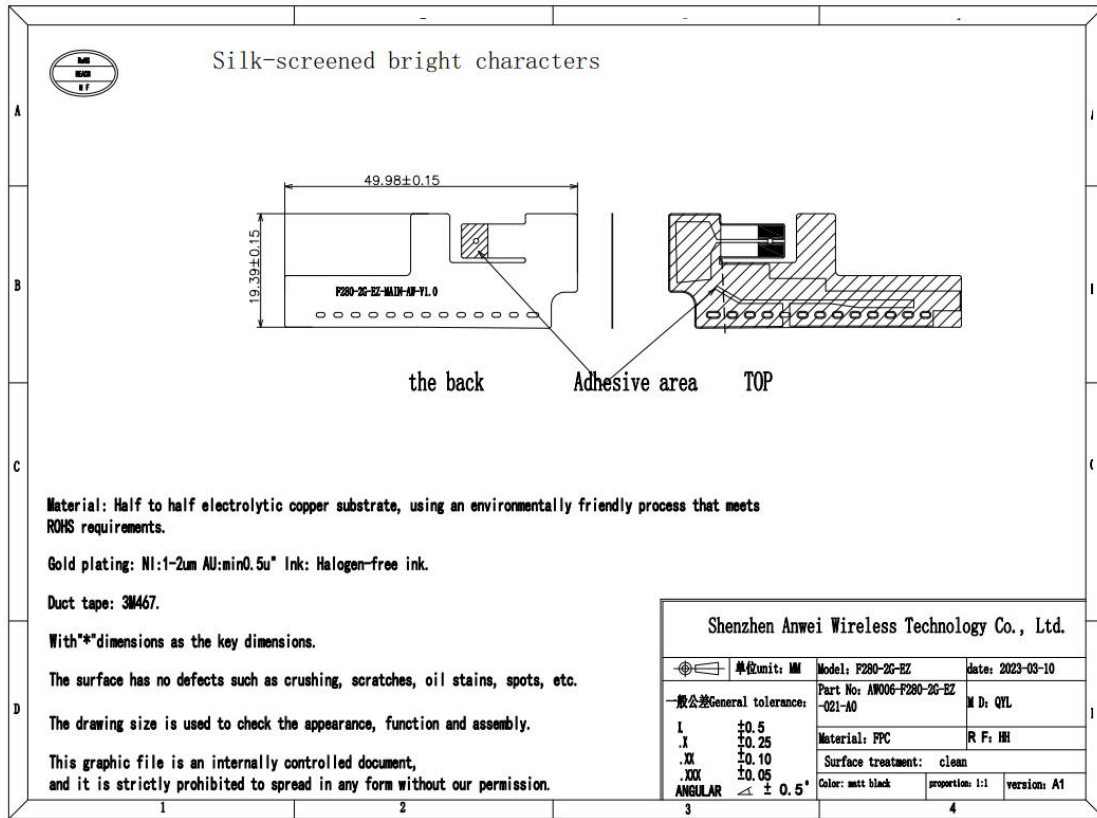
安威无线一直都是您值得信赖且优秀的合作伙伴，我们为您提供全方位一站式的的产品以及技术服务！

“质量第一，服务至上”是安威一直以来的发展宗旨

Mobile phone appearance and antenna sampe pcture

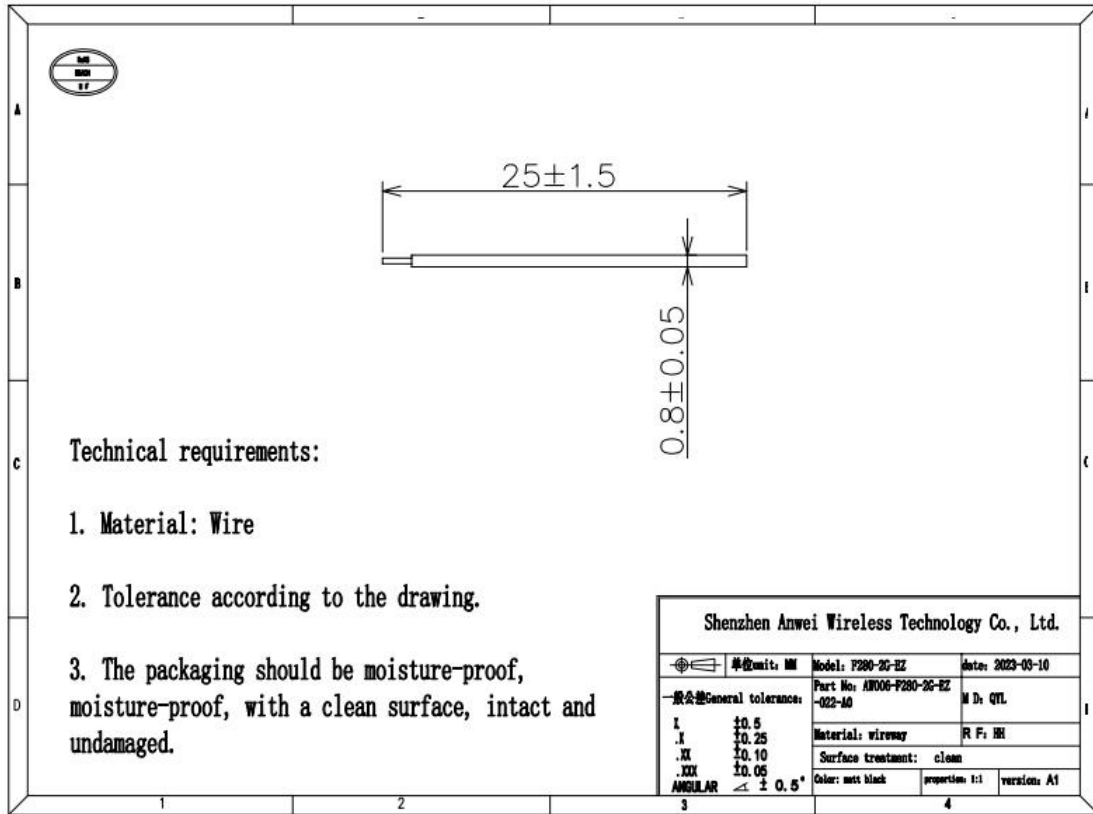


(Main antenna)



(Working frequency band): 820MHZ~894MHZ 1850~1990MHZ
2G:GSM850/1900

(2.4G/BT antenna)



(Working frequency band): 2400-2500MHZ

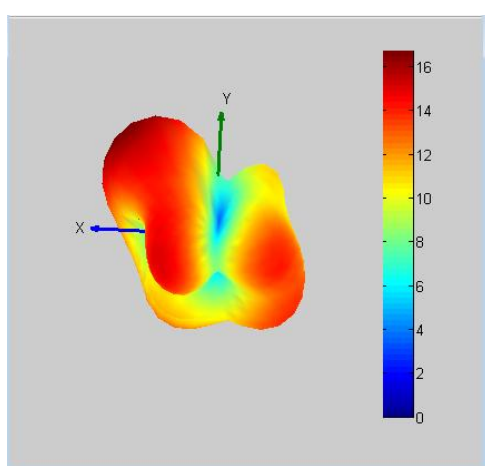
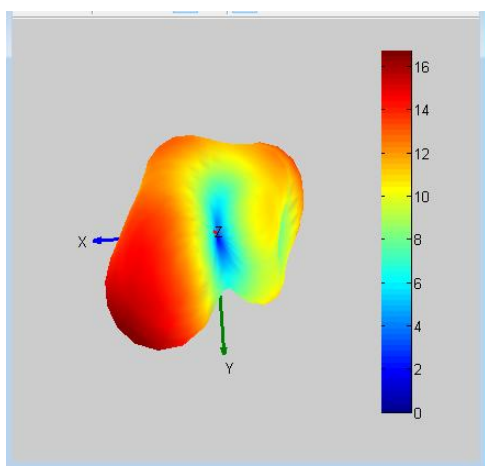
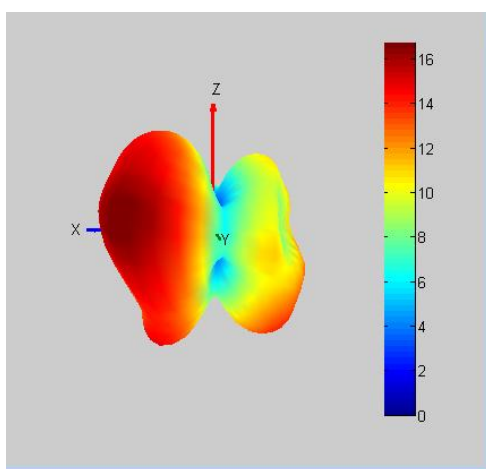
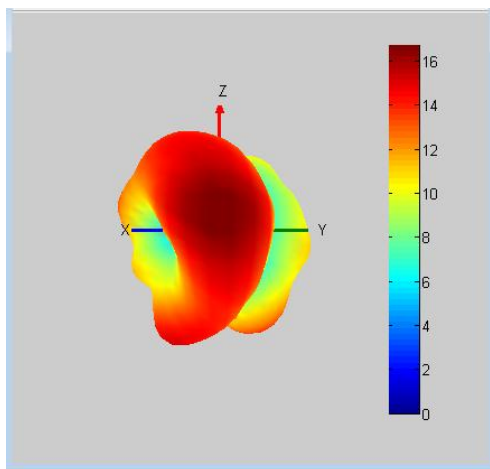
BT

Main antenna-Active test beport

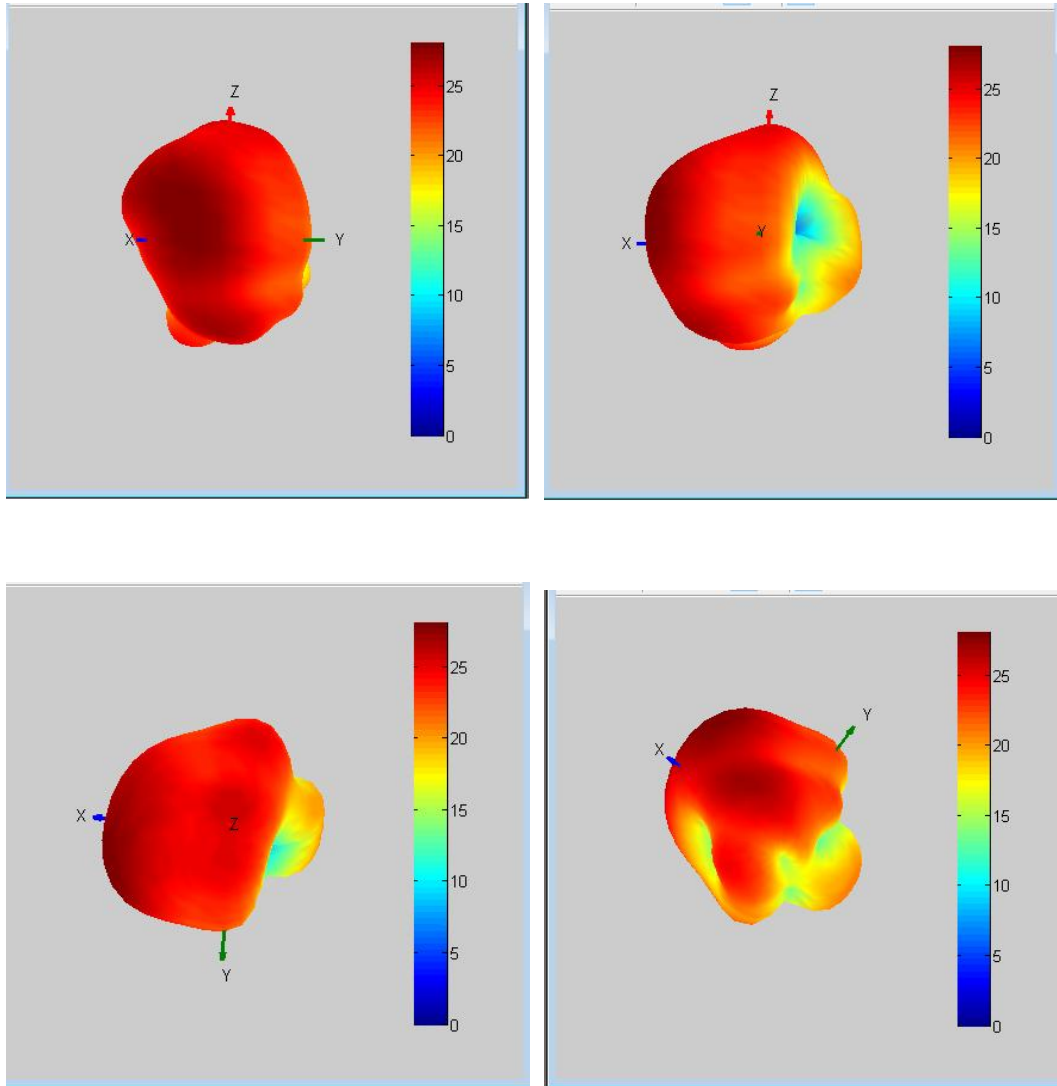
Gain&Efficiency 增益和效率			
frequency 频率 (MHz)	gain 增益 (dBi)	efficiency 效率(dBi)	efficiency 效率(%)
820	1.5	-3.76	42.03
830	1.07	-4.14	38.58
840	0.26	-4.87	32.61
850	0.6	-4.71	33.82
860	0.35	-5.21	30.10
870	0.62	-5.08	31.06
880	-0.17	-5.81	26.21
890	-0.41	-5.82	26.16
900	-1.69	-6.9	20.40

Gain&Efficiency 增益和效率			
frequency 频率 (MHz)	gain 增益 (dBi)	efficiency 效率(dBi)	efficiency 效率(%)
1850	1.43	-3.57	44.00
1860	1.82	-3.18	48.10
1870	1.33	-3.71	42.54
1880	1.62	-3.74	42.25
1890	1.45	-3.93	40.47
1900	0.59	-4.79	33.17
1910	0.46	-5.01	31.56
1920	-0.24	-5.62	27.39
1930	0.5	-4.83	32.92
1940	-0.13	-5.54	27.92
1950	0.24	-5.33	29.29
1960	-0.93	-6.58	21.98
1970	-0.1	-6.08	24.64
1980	-0.72	-7.06	19.68
1990	-0.36	-6.87	20.54

GSM 850

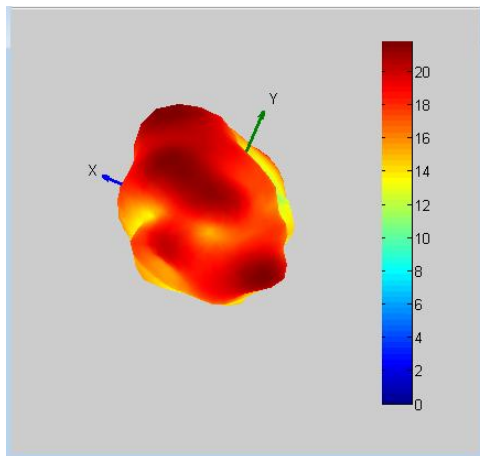
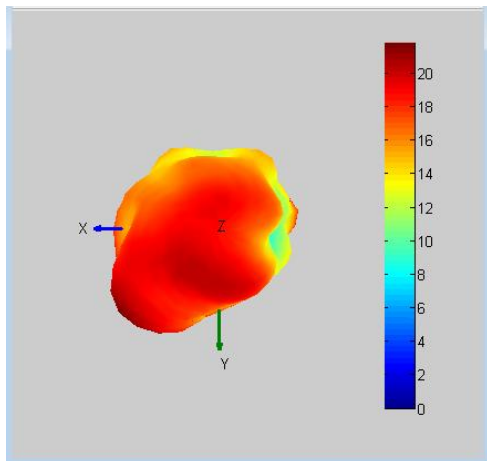
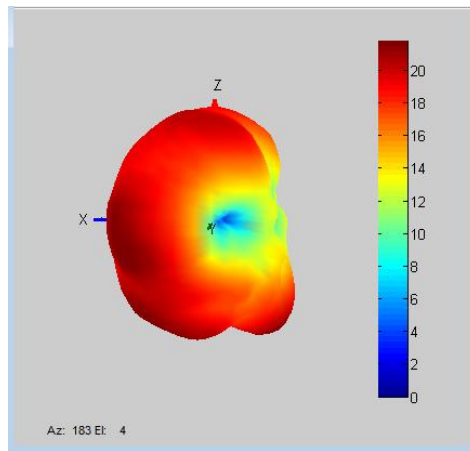
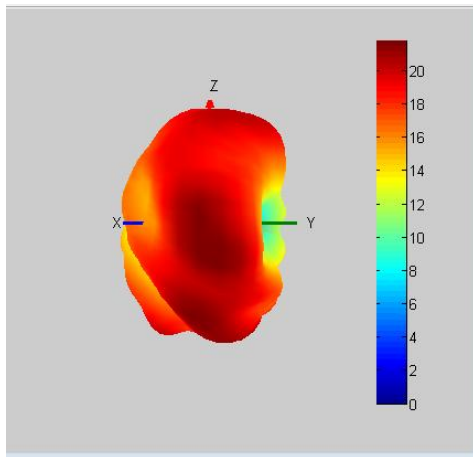


PCS 1900



BT antenna-Active test report

Gain&Efficiency 增益和效率			
frequency 频率 (MHz)	gain 增益 (dBi)	efficiency 效率(dBi)	efficiency 效率(%)
2400	-3.09	-8.04	15.69
2410	-3.14	-8.28	14.85
2420	-2.01	-7.02	19.86
2430	-3	-7.81	16.56
2440	-2.72	-7.75	16.77
2450	-3.14	-8.23	15.05
2460	-2.39	-7.49	17.82
2470	-2.79	-7.99	15.90
2480	-2.68	-8.07	15.58
2490	-1.97	-7.29	18.68
2500	-1.94	-7.05	19.73



The End