



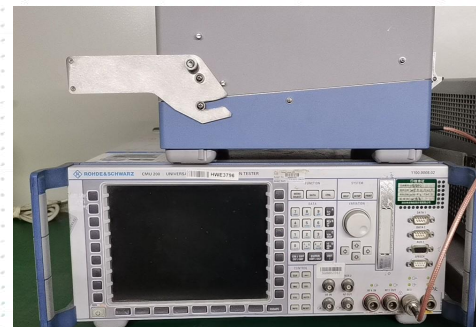
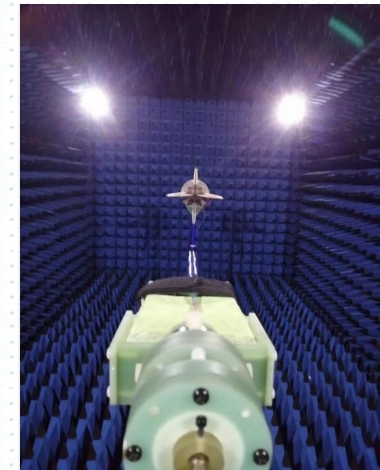
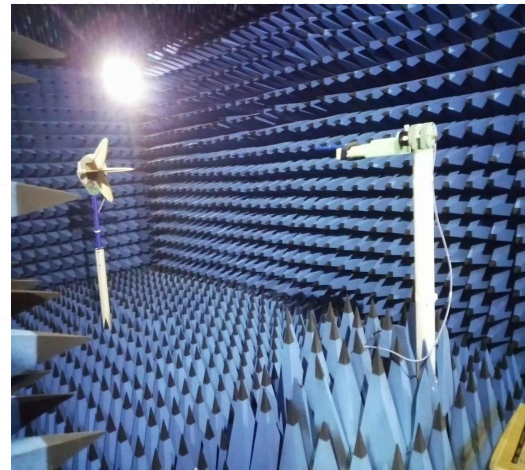
Antenna Design & Test Report

2023-5-17

Main Antenna	
2G	850/900/1800/1900
3G	
4G	
Slave Antenna	
BT	
WIFI	N/A
GPS	N/A

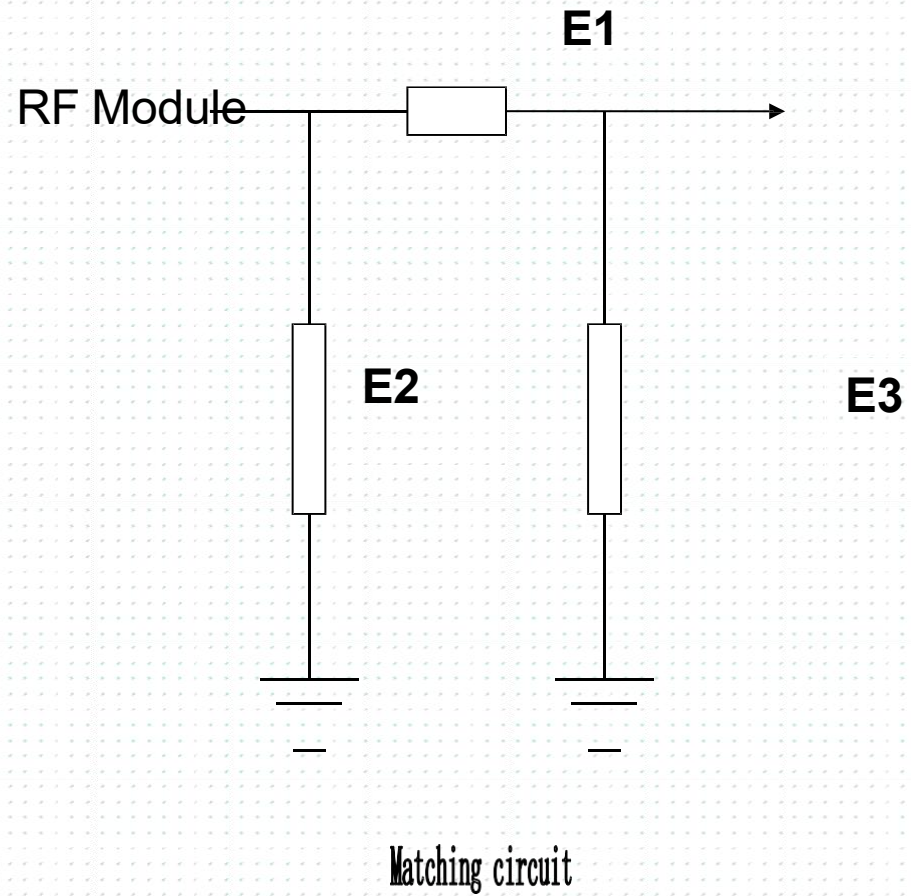
2023-5-17

Test Equipment	MT8820C Agilent 8960 CMU200 8753E
	ETS-743
Test Temperature	23°C



2023-5-17

Element	Value
E1(0402)	
E2(0402)	
E3(0402)	



Match circuit diagram (main signal source)

(1) PCBA: E301

(2) Antenna: ZJX-6700

	850			900			1800			1900		
	128	190	251	1	62	124	512	698	885	512	651	810
TRP	26.9	28.1	29.6	29.6	29.4	29.1	23.1	23.4	24.2	26.0	26.1	25.1
MAX	28.8	30.0	31.5	32.3	32.4	32.0	26.9	27.0	28.0	29.8	29.9	29.0
TIS	-105.8	-105.9	-106.8	-109.0	-107.1	-106.6	-105.5	-104.7	-104.8	-105.6	-104.6	-103.5
MAX	-107.8	-108.7	-109.8	-111.7	-110.1	-108.8	-109.1	-108.9	-109.1	-109.5	-108.6	-108.2

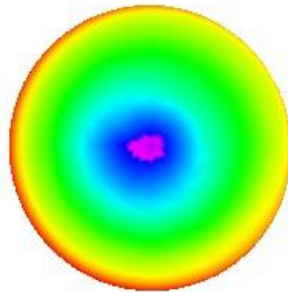
unit: dBm

Antenna passive gain efficiency test

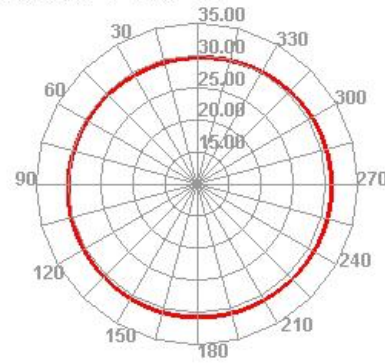
	Antennae	Model(s)/Type(s)	
	Name		
Antennae information:	N6700	Model/Part Number:	
		Modulation Mode :	GMSK
		Frequency Range:	GSM:880MHZ-1880MHZ; BT:2420MHZ-2480MHZ.
		Maximum Gain	GSM GSM850: 0.45dBi GSM900: 1.13dBi DCS1800: 0.64dBi PCS1900: 0.52dBi BT: 0.31dBi
		Antenna Type/ Pattern:	GSM:PIFA BT: Monopole

2023-5-17

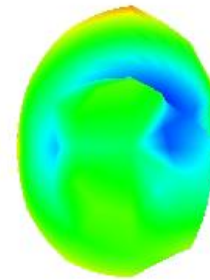
EGSM 1 TRP



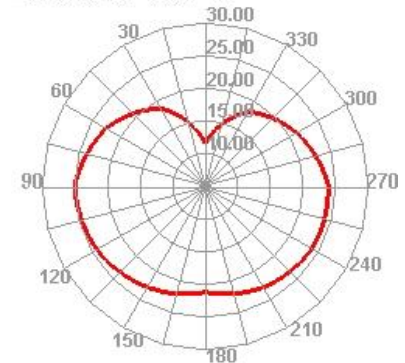
EGSM 1 TRP H



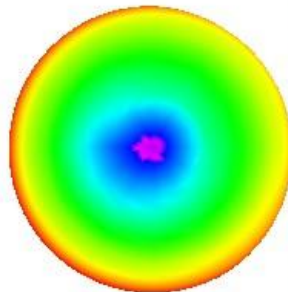
DCS 512 TRP



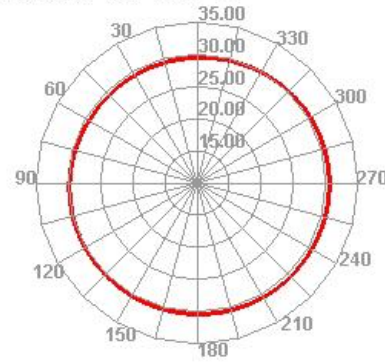
DCS 512 TRP H



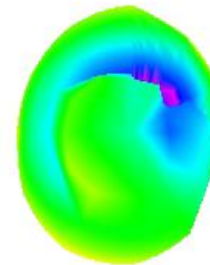
EGSM 62 TRP



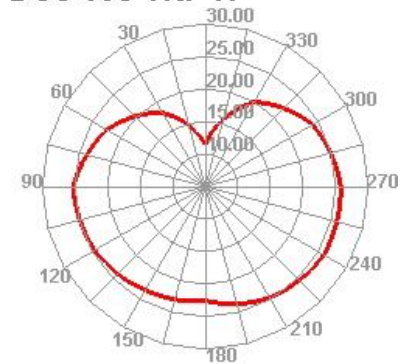
EGSM 62 TRP H



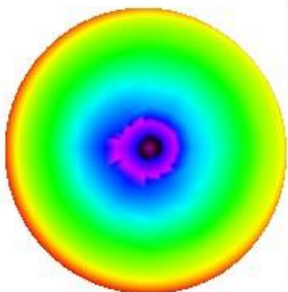
DCS 698 TRP



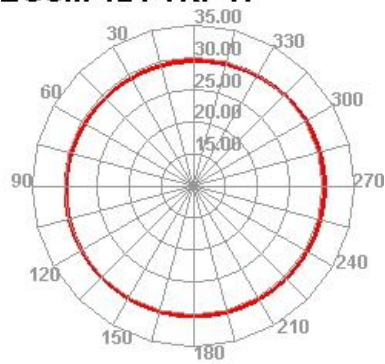
DCS 698 TRP H



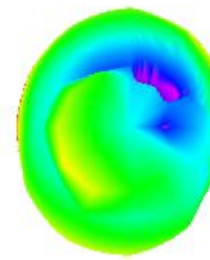
EGSM 124 TRP



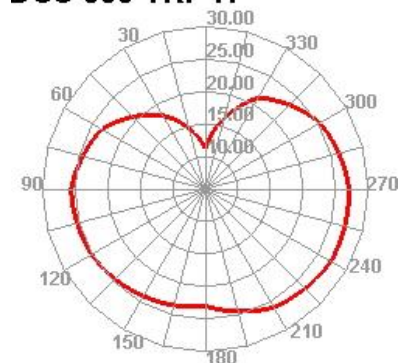
EGSM 124 TRP H



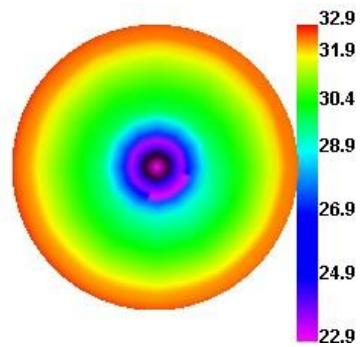
DCS 885 TRP



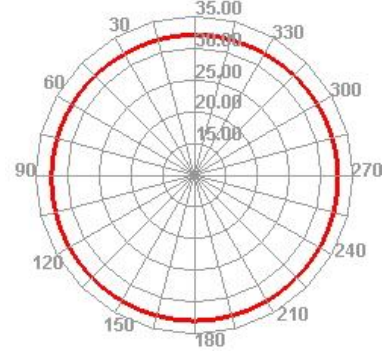
DCS 885 TRP H



GSM850 128 TRP



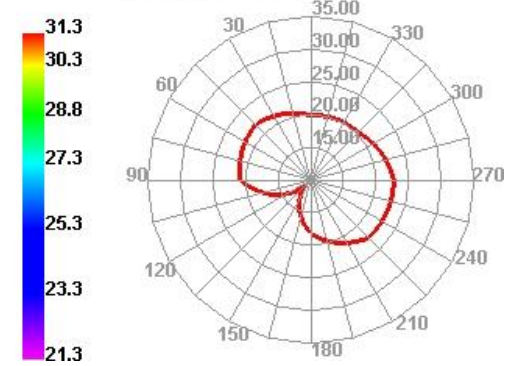
GSM850 128 TRP H



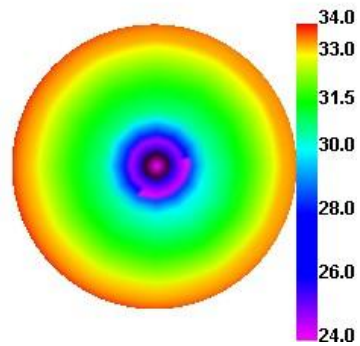
PCS 512 TRP



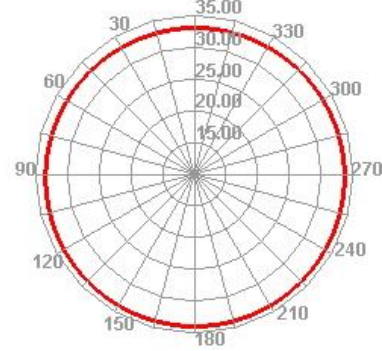
PCS 512 TRP H



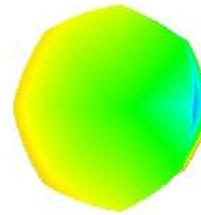
GSM850 190 TRP



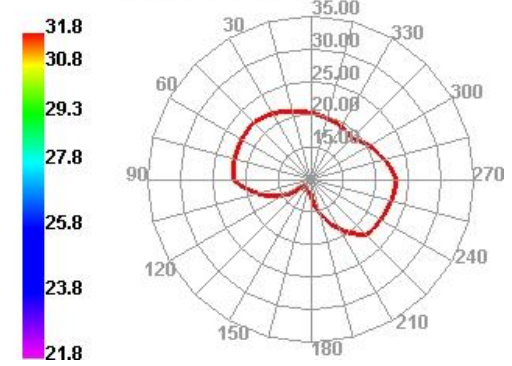
GSM850 190 TRP H



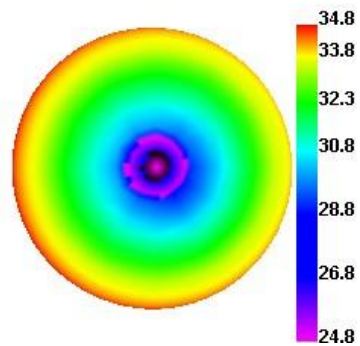
PCS 661 TRP



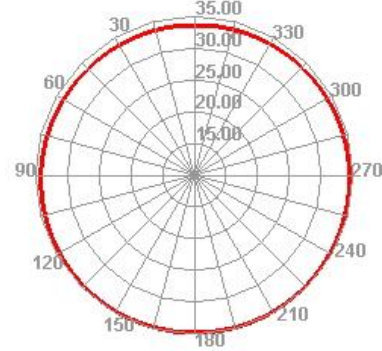
PCS 661 TRP H



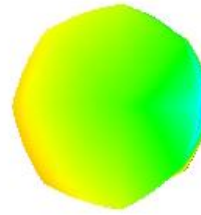
GSM850 251 TRP



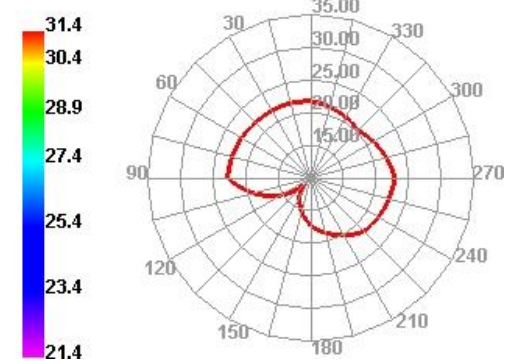
GSM850 251 TRP H



PCS 810 TRP

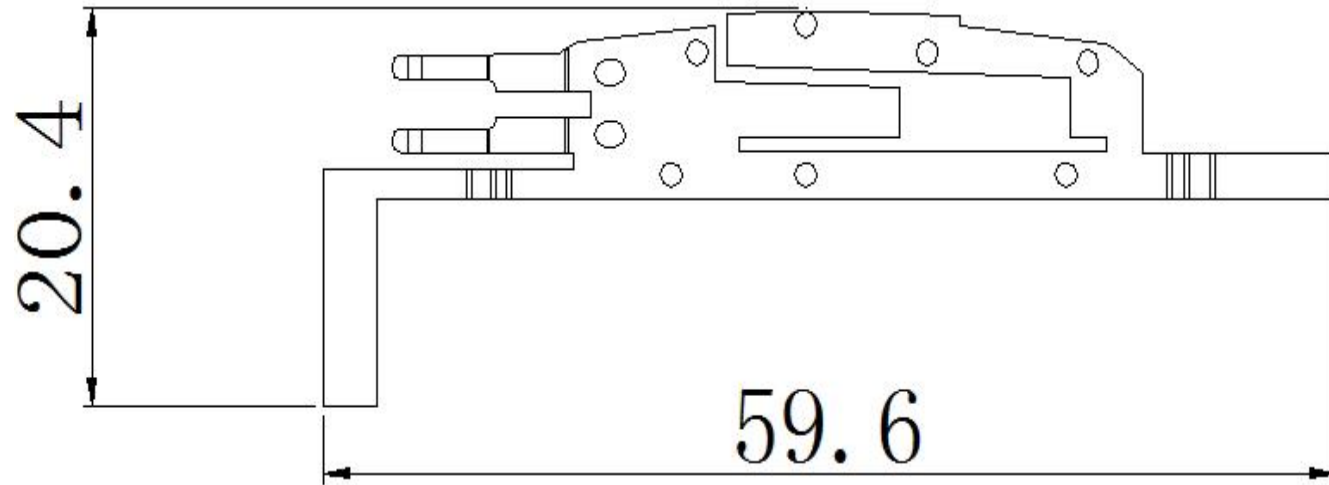


PCS 810 TRP H



Antenna appearance

GSM antenna



BT antenna

