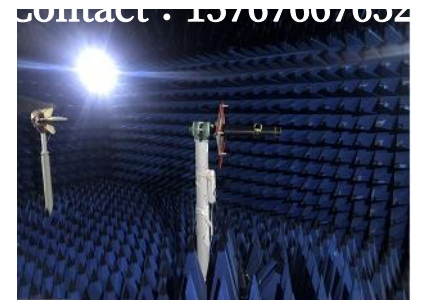


# Zhuoxint ZT1003T antenna commissioning report

RF Hello



1

Project commissioning profile

2

Report version outline

3

Antenna active parameters

4

Antenna Passive Parameters

5

Antenna environment treatment

6

Summary & Additional Notes



Project commissioning profile

<b>Machine Type</b>	Tablet			
<b>Plate Type</b>	Motherboard			
<b>Frequency band and antenna material</b>	<b>Main Antenna</b>	<b>Frequency band</b>		<b>Material Quality</b>
		2G	GSM850/900/1800/1900	
		3G	WCDMA B1/2/5/8	
	4G	LTE B2/4/5/7/12/17/28AB		
	<b>Other antennas</b>	GWB	1575.42MHz/2.450GHz	FPC
		DRX	1710MHz-2700MHz	FPC



深圳市昱晟通讯设备有限公司

Yusheng Communications-equipment Co.,LTD

Performance  
Requirements

Execution  
according to  
customer  
requirements

Main antenna  
active

Test	GSM 850			EGSM 900		
Channel	128	190	251	1	62	124
TRP(dBm)	26.56	26.74	26.51	25.13	24.64	24.54
TIS(dBm)			-102.43			-100.35

Test	DCS 1800			PCS 1900		
Channel	512	698	885	512	661	810
TRP(dBm)	24.88	25.14	25.27	25.46	25.32	24.75
TIS(dBm)			-102.21			-102.56

Main antenna  
active

Test	WCDMA_I			WCDMA_II		
Channel	10562	10700	10838	9662	9800	9938
TRP(dBm)	17.66	17.85	17.71	18.09	18.14	17.66
TIS(dBm)			-103.23			-103.18

Test	WCDMA_V			WCDMA_VIII		
Channel	4357	4408	4458	2937	3013	3088
TRP(dBm)	16.75	17.23	17.43	16.26	15.31	14.19
TIS(dBm)			-102.41			-100.66



Main antenna active

Test	FDD B2			FDD B4		
Channel	18650	18900	19150	20050	20175	20350
TRP(dBm)	18.35	18.89	18.78	18.78	18.45	18.66
TIS(dBm)			-93.26			-93.51
Test	FDD B5			FDD B7		
Channel	20450	20525	20600	20800	21100	21400
TRP(dBm)	18.23	18.41	18.36	17.32	18.51	18.25
TIS(dBm)			-91.32			-93.14
Test	FDD B12			FDD B17		
Channel	23035	23095	23155	23780	23790	23800
TRP(dBm)	16.78	16.64	16.44	16.52	16.69	16.72
TIS(dBm)			-91.38			-91.53



Main antenna  
active

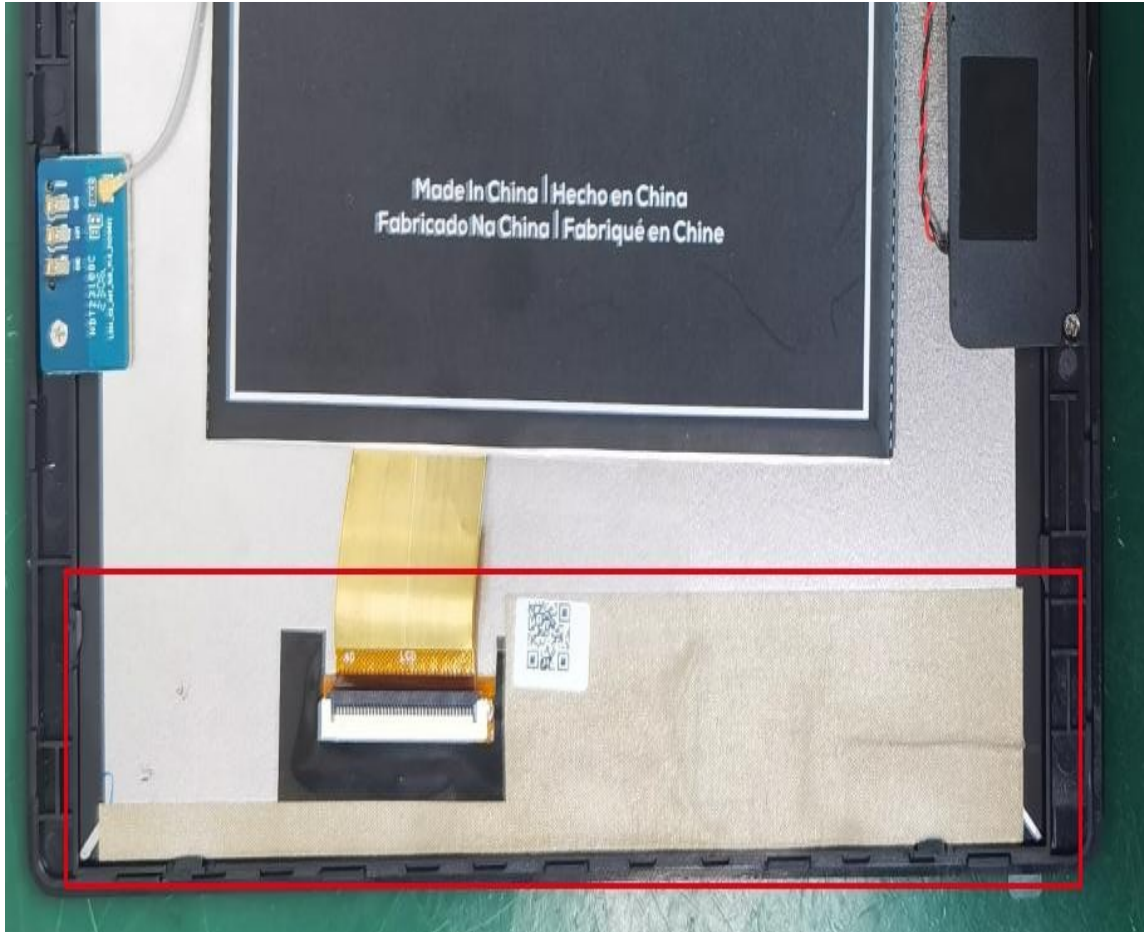
Test	FDD B28A			FDD B28B		
	Channel	27260	27360	27460	27410	27510
TRP(dBm)	16.41	16.63	16.88	16.49	16.74	17.22
TIS(dBm)			-91.63			-91.52



GPS test

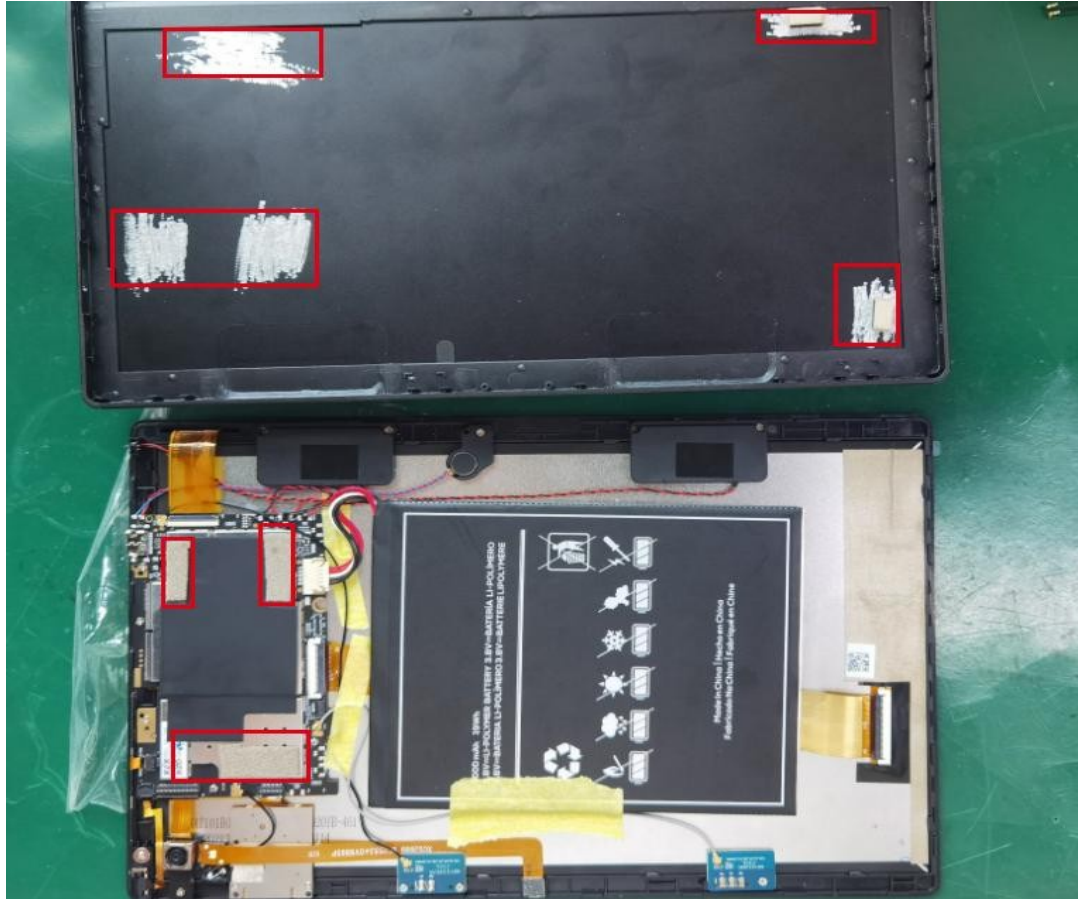


Antenna  
environment



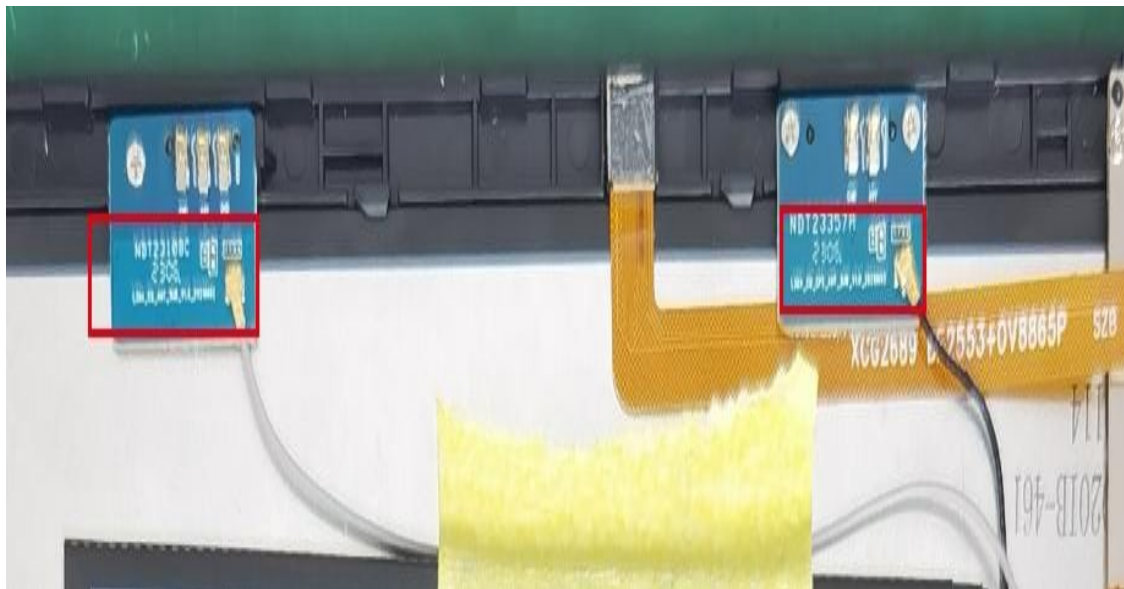
1、Conductive cloth shielding  
screen FPC

## Antenna environment



- 1、The back shell zinc alloy needs laser engraving grounding
- 2 the motherboard paste

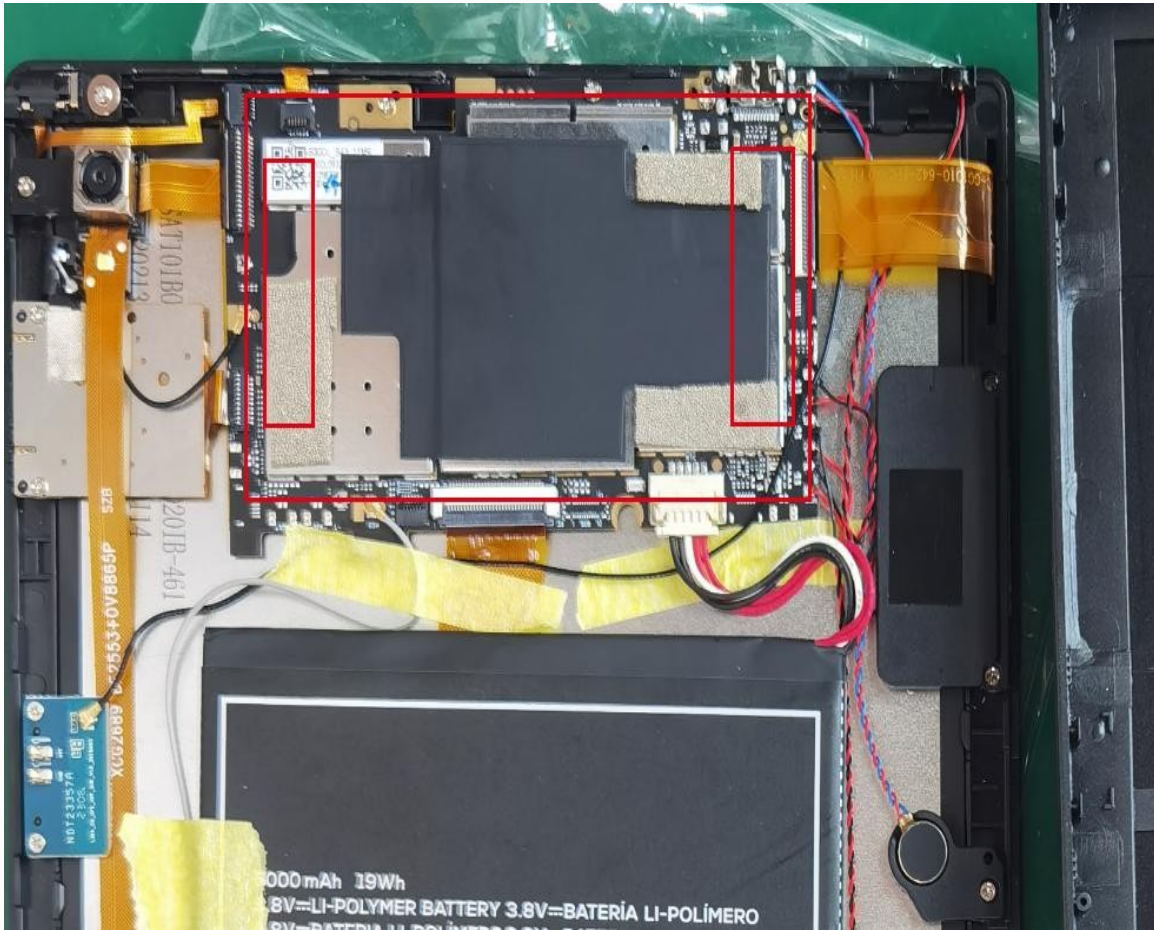
**Antenna  
environment**



**1, TRX and GWB small board  
leakage of copper at the paste  
sponge and screen grounding**



Antenna  
environment



1, the back of the motherboard  
paste sponge and screen

## Antenna

Band	Gain (MAX)		
GSM850	0.67	LTE B28	0.62
EGSM900	0.48	GPS	1.25
DCS1800	0.49	WiFi	1.13
PCS1900	0.55	BT	1.13
WCDMA B1	0.58	5Gwifi	1.36
WCDMA B2	0.55		
WCDMA B5	0.67		
WCDMA B8	0.48		
LTE B2	0.55		
LTE B4	0.52		
LTE B5	0.67		
LTE B7	0.61		



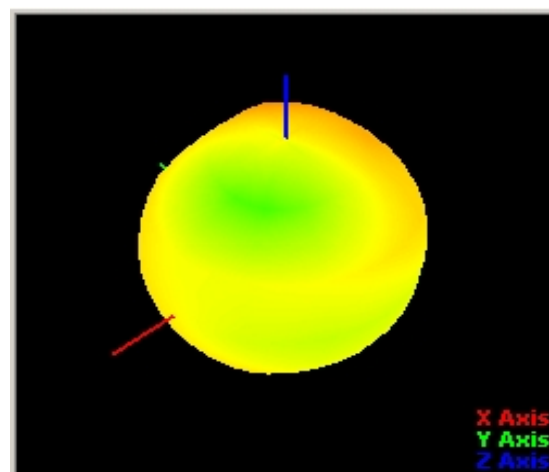
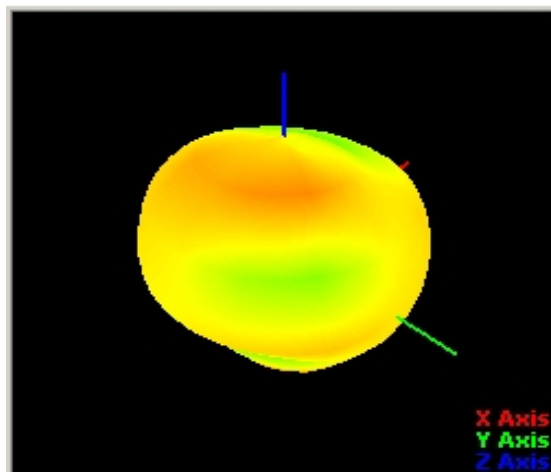
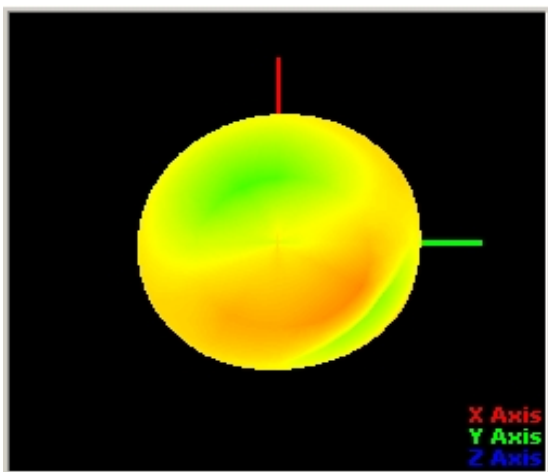
深圳市昱晟通讯设备有限公司

Yusheng Communications-equipment Co.,LTD

---

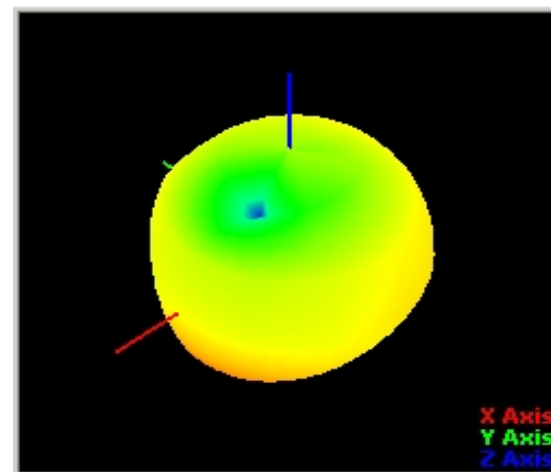
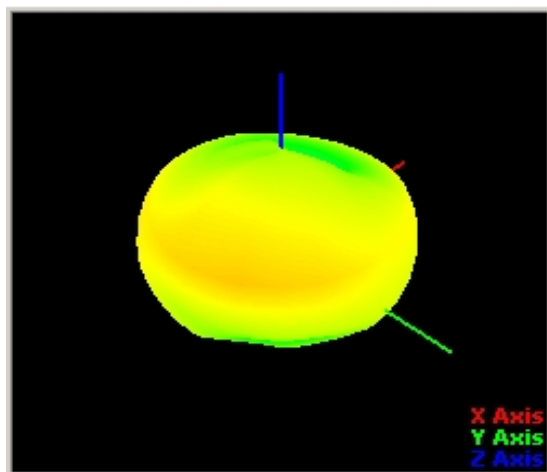
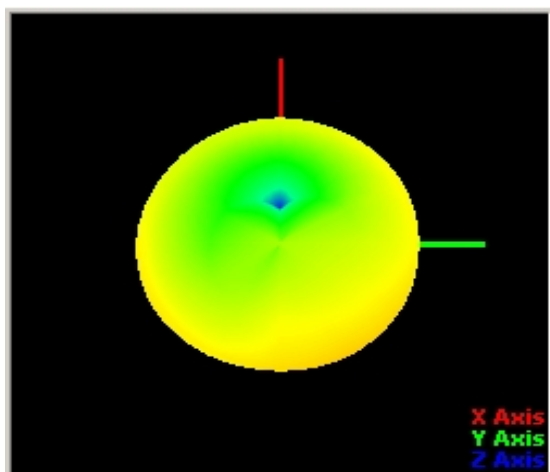
LTE B12	0.62
LTE B17	0.62

LTE Band12/17/28AB Passive

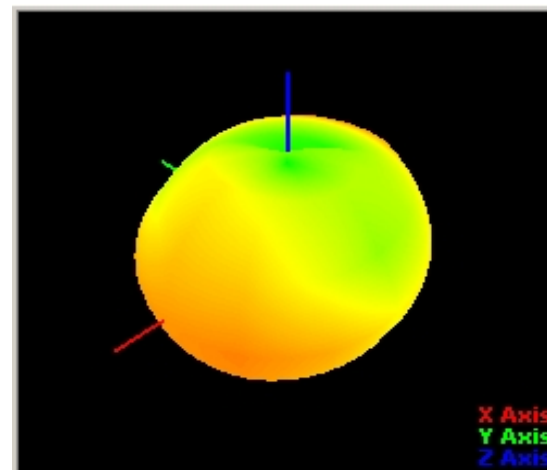
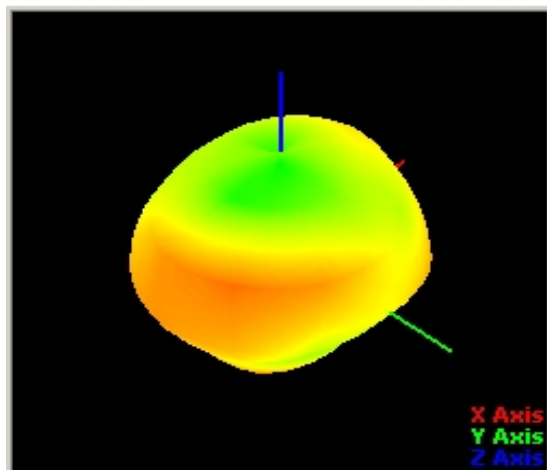
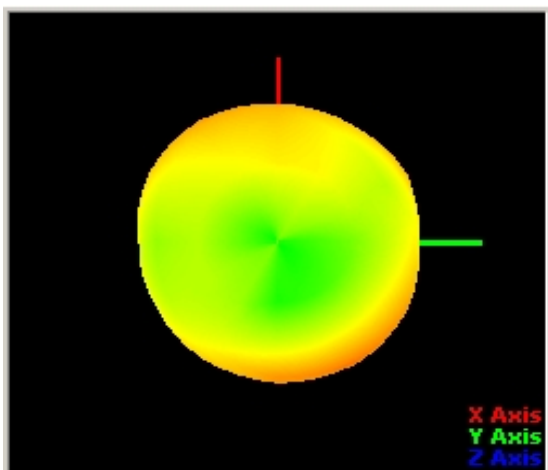




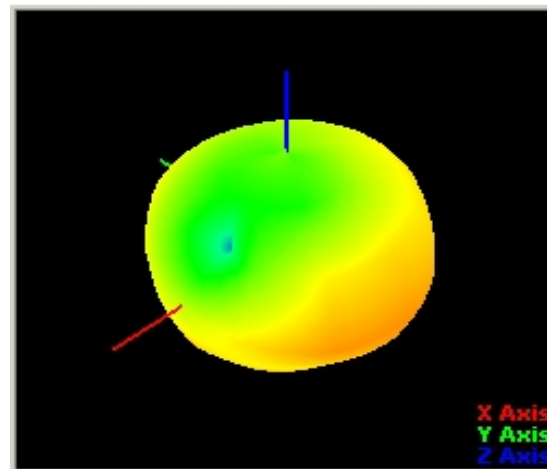
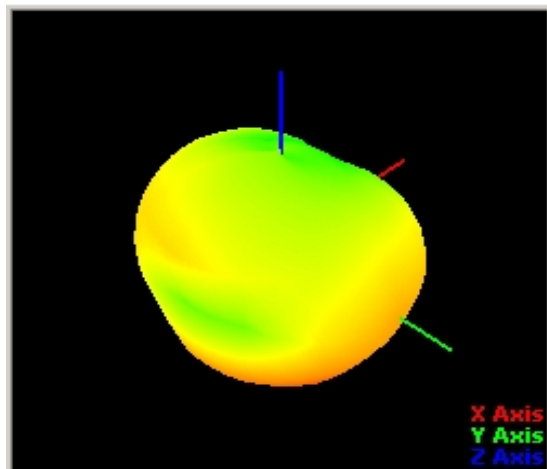
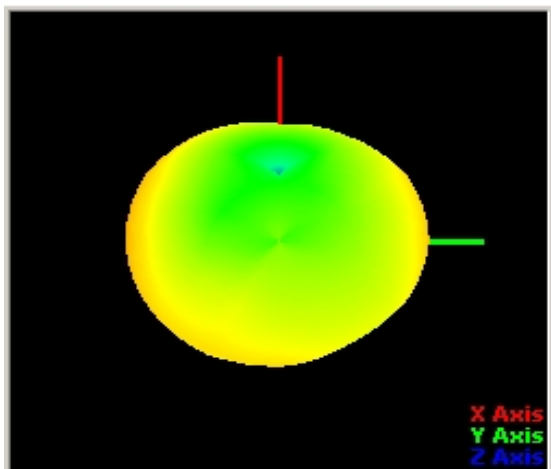
GSM900/WCDMA900 Passive Apple Chart



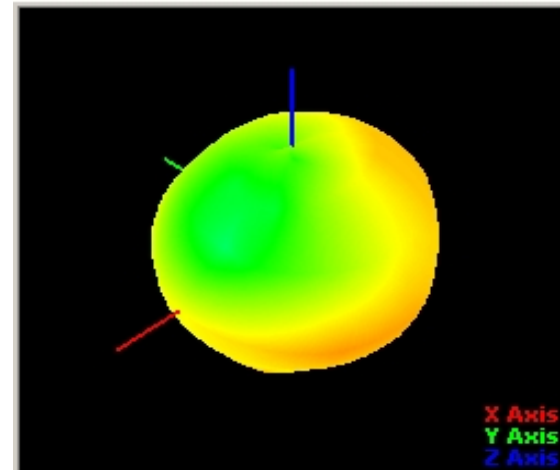
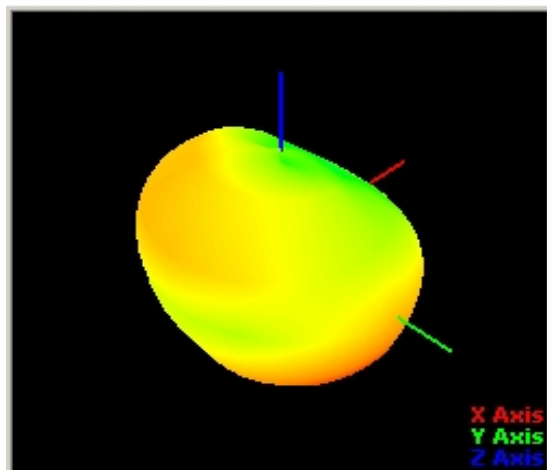
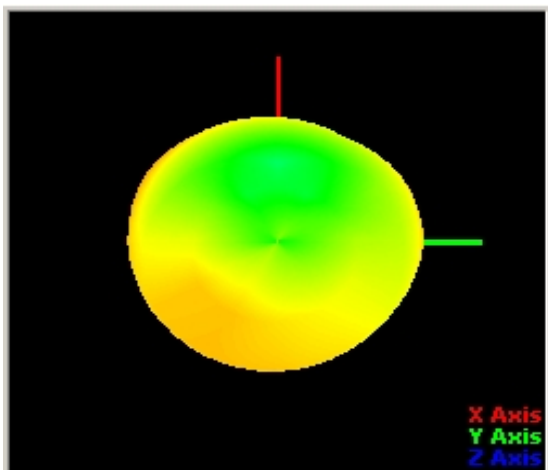
GSM850/WCDMA850/LTE Band5 Passive



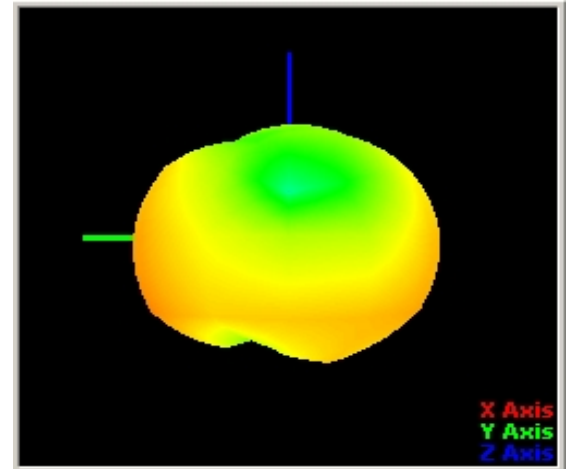
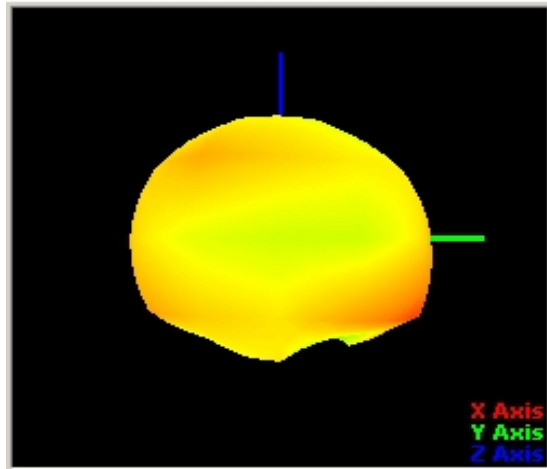
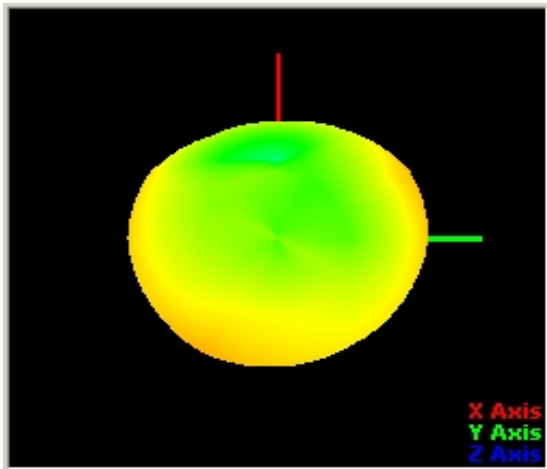
LTE Band4 Passive Apple



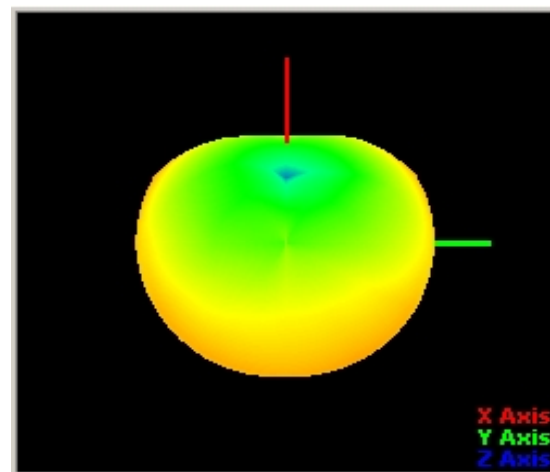
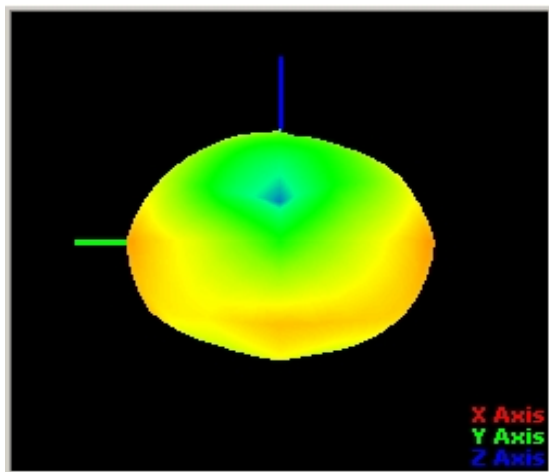
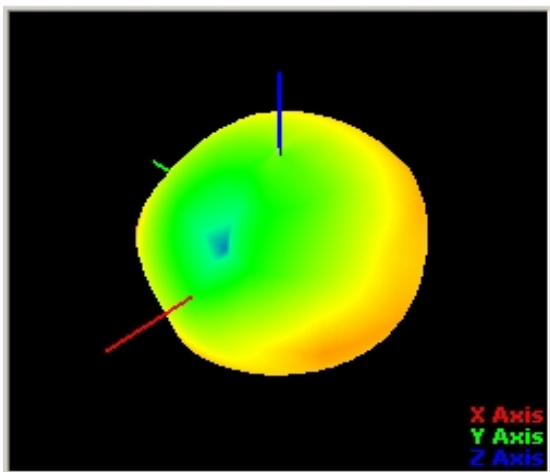
GSM 1800 Passive Apple



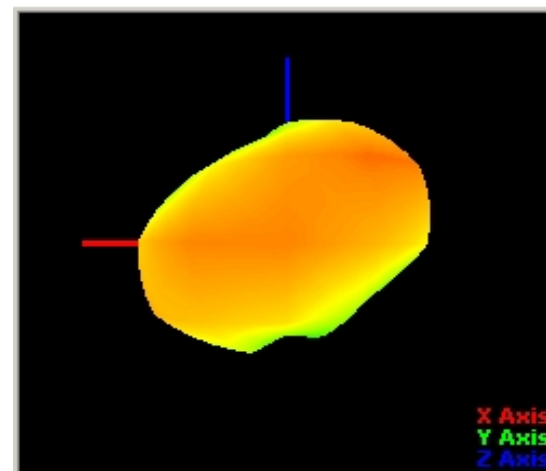
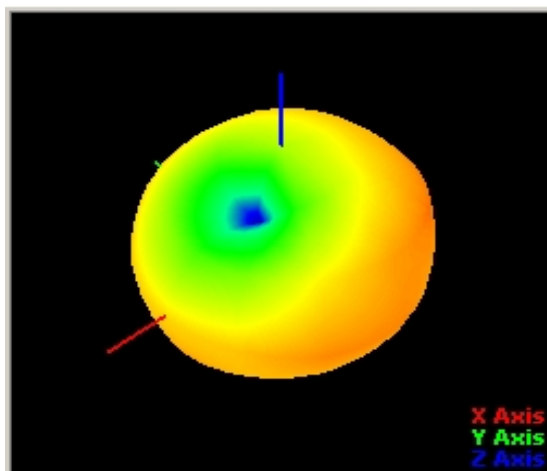
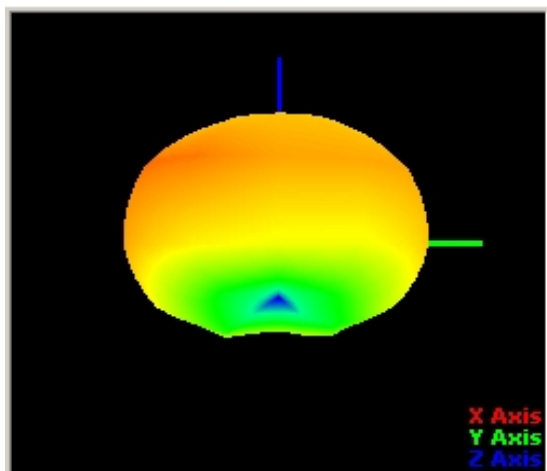
GSM1900/WCDMA1900/LTE Band2 Passive



WCDMA2100 Passive Apple

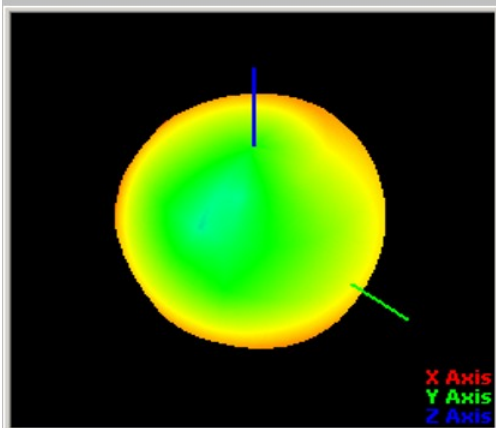


LTE Band7 Passive  
Apple Chart



## WiFi2.4G Passive Gain Chart

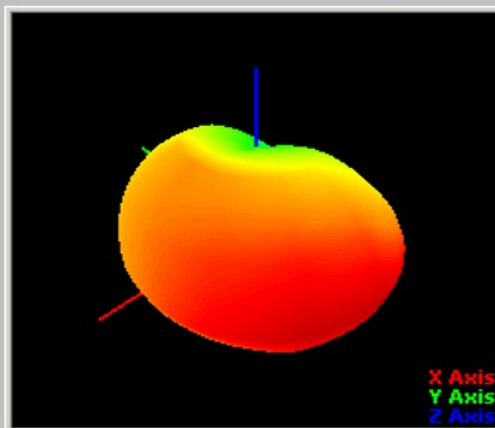
Passive -Freq2450.00MHZ



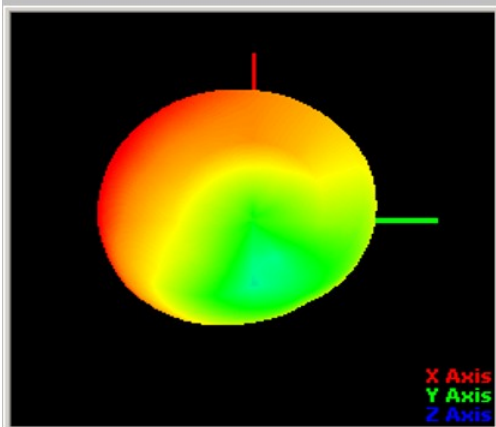
T45-P45



1.13  
-3.13  
-5.69  
-8.24  
-13.79  
-19.35  
-22.9  
-26.45  
-30.01  
-33.56  
-37.11  
-40.67  
-44.22  
-47.77  
-51.33  
-54.88  
-58.43  
-61.99



T45-P225

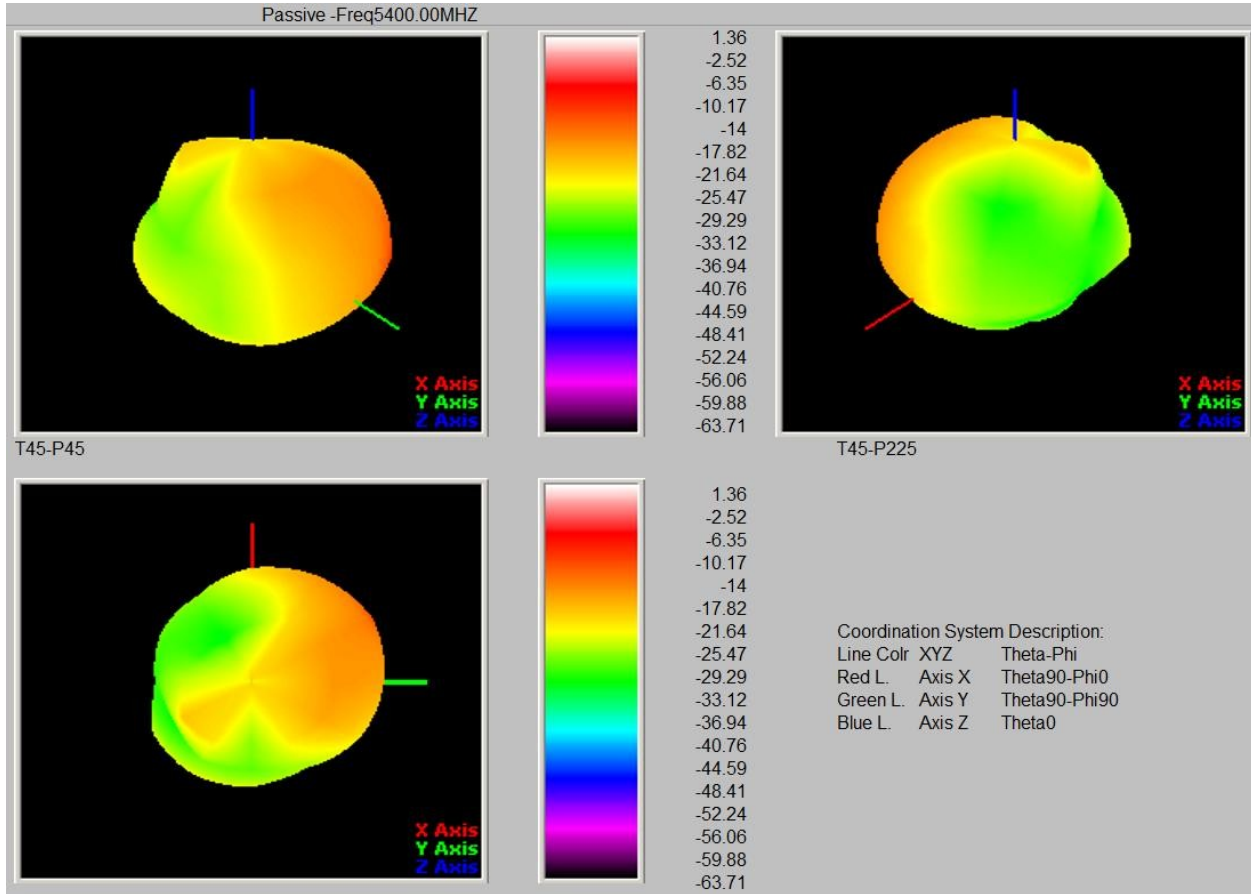


1.13  
-3.13  
-5.69  
-8.24  
-13.79  
-19.35  
-22.9  
-26.45  
-30.01  
-33.56  
-37.11  
-40.67  
-44.22  
-47.77  
-51.33  
-54.88  
-58.43  
-61.99

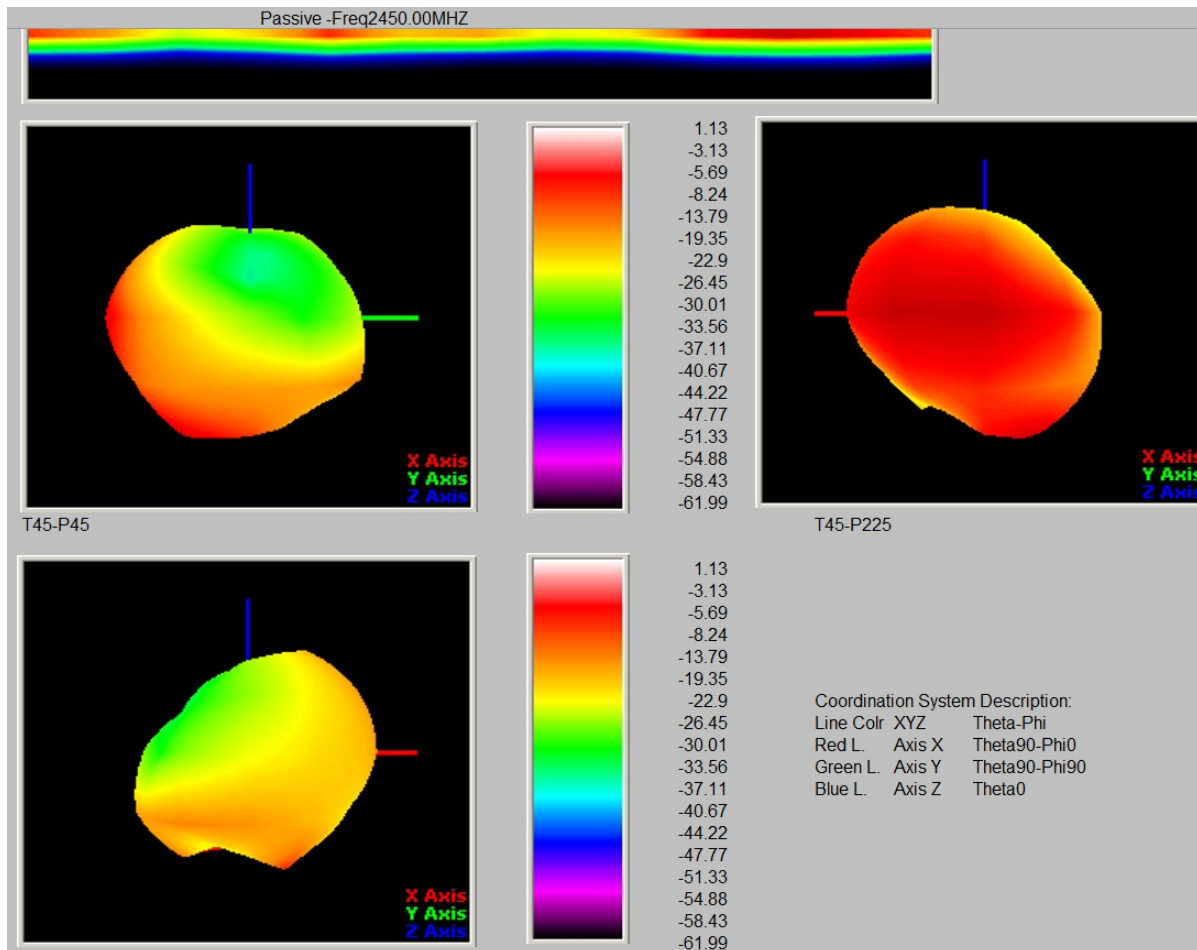
Coordination System Description:  
 Line Color XYZ Theta-Phi  
 Red L. Axis X Theta90-Phi0  
 Green L. Axis Y Theta90-Phi90  
 Blue L. Axis Z Theta0



**WiFi5G Passive Gain Chart**



## BT Passive Gain



# *Thank you!*



Shenzhen Address: **4th** Floor, Building **2**, Nantai

Yunchuanggu, Guangming New Area, Shenzhen Tel:

**0755-23984257**

Fax: **0755-86090455**