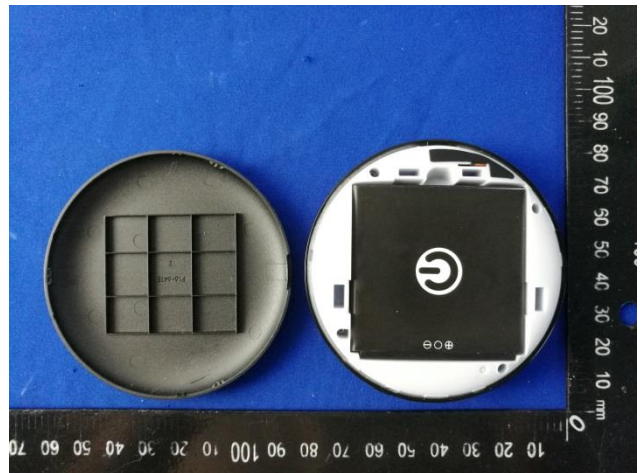
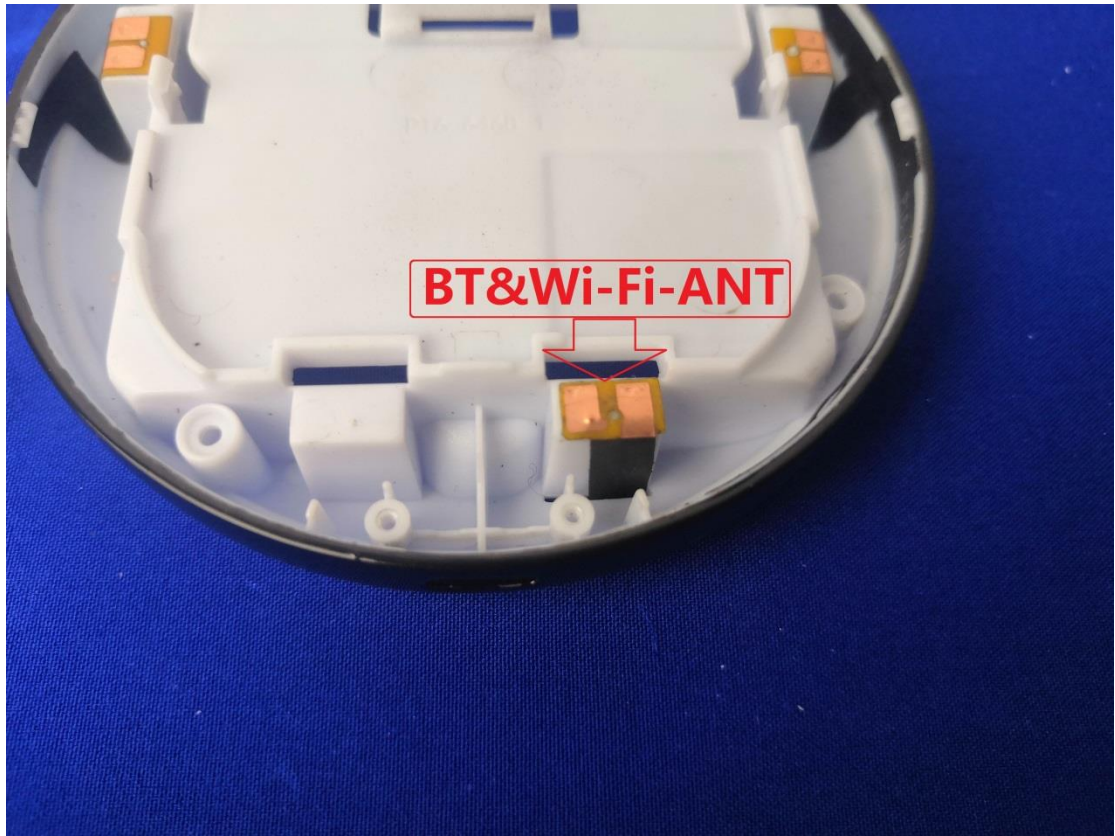


EUT Photos (Model: ML10)



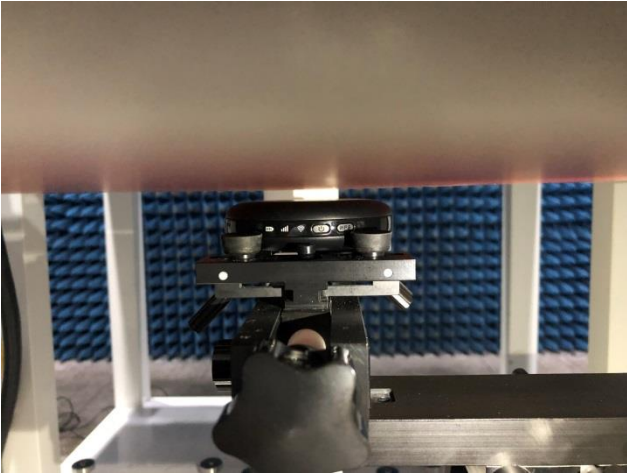
EUT Antenna Locations



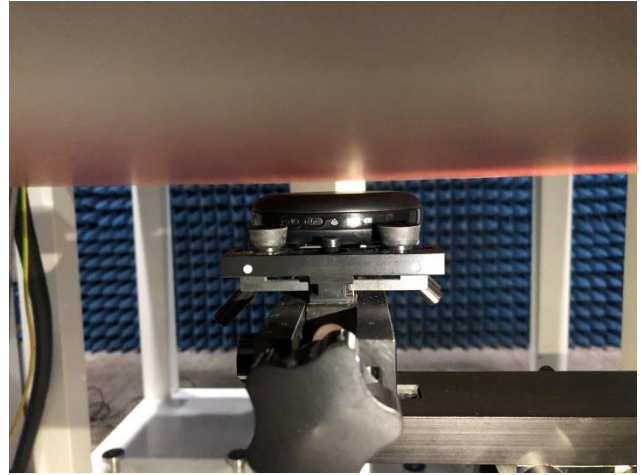


SAR Test Setup Photos

Body



Front side (5mm)



Back side(5mm)



Top side(5mm)

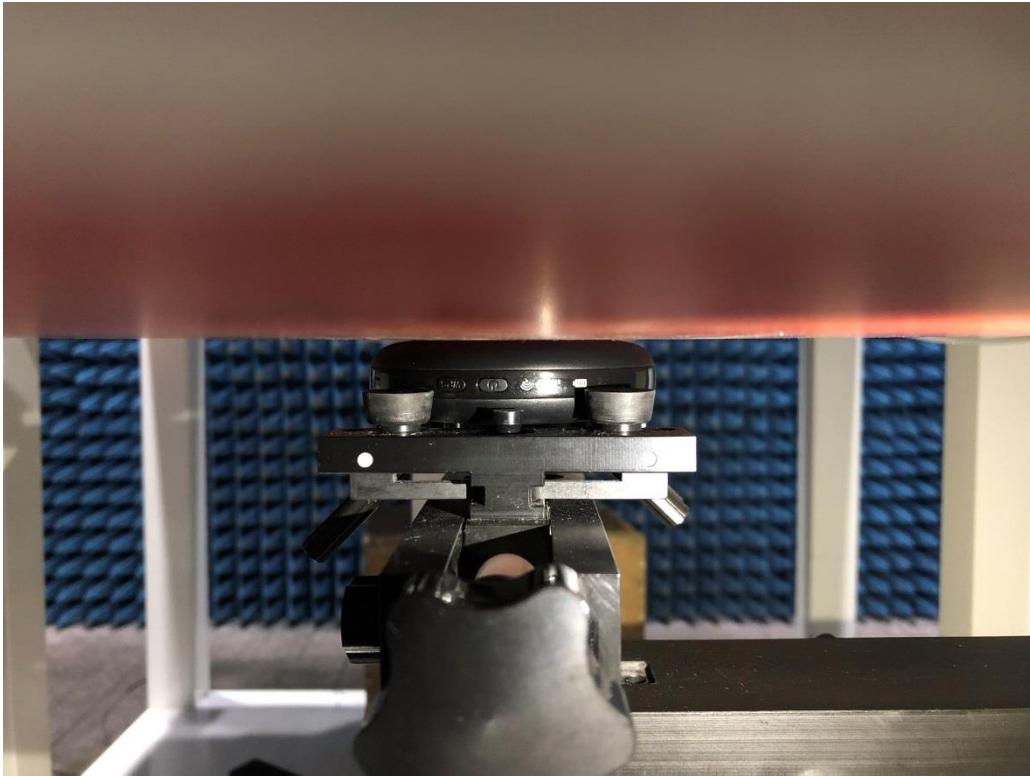


Bottom side(5mm)

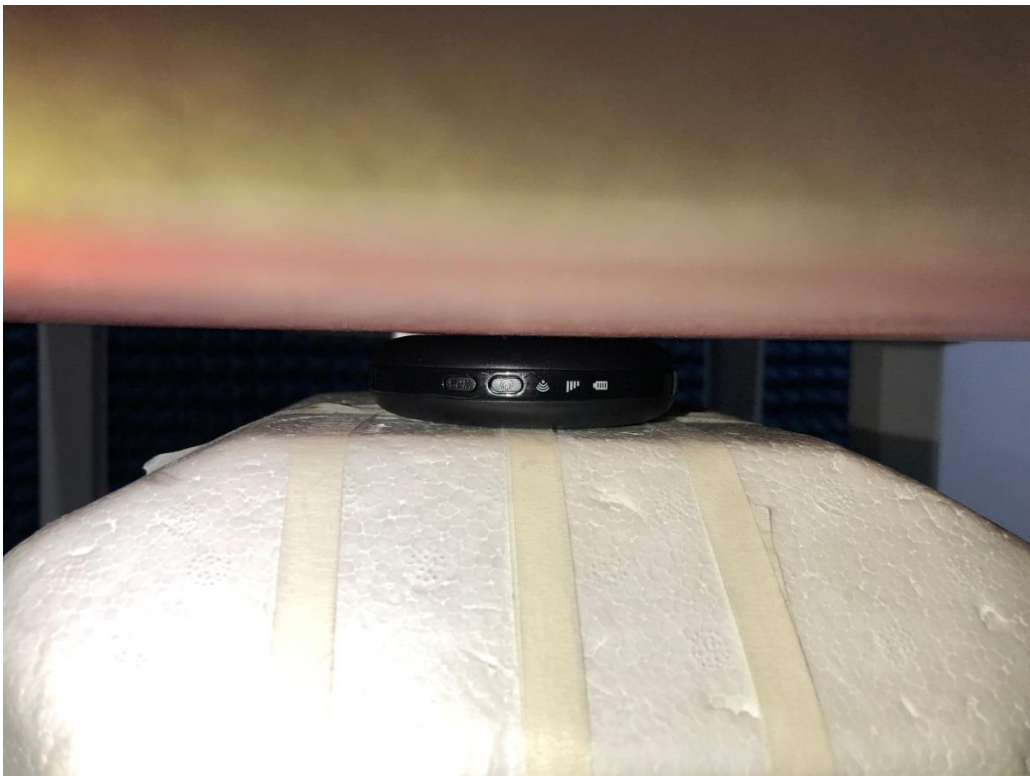


Right side(5mm)

EUT holder Perturbation Evaluation Test Setup Photos



DUT with device holder (DUT direct contact with the phantom)



DUT without device holder (DUT direct contact with the phantom)