

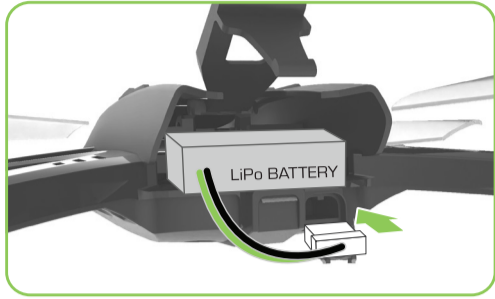
SKYVIPER NOVA FX

LIGHT DISPLAY DRONE

COLOR MORPH BLADES

12+

POWERING UP AND PAIRING REMOTE



Insert fully charged LiPo battery.



Place the drone on level surface.



Turn on controller.

The remote will beep and some drone LEDs will blink as the remote pairs with the drone. Once the beeping and blinking stop, the drone is ready to fly.

IMPORTANT: When first becoming familiar with the Nova FX light display drone, it is recommended that you practice flying during full daylight hours. Drone lighting can be minimized to conserve battery power and significantly extend daytime flight. See below for details.

WARNING: Use extreme caution and common sense when flying drone in low light conditions. Only fly drone in wide open spaces. Never fly drone when you cannot perceive its location in relation to surrounding objects. Flying a drone in complete darkness is not recommended. Also be aware of YOUR immediate surroundings when walking around in low lighting. Adult supervision required.

COLOR MORPHING ROTORS

Nova features full spectrum RGB illuminated propellers that light up the evening sky, extending your flight time from day into night. Each propeller has six individually controllable segments to create dazzling multicolor effects.

CHANGING LIGHT FX MODES

TAP the FX button to toggle through different light mode settings, including Adaptive modes where colors shift and flow dynamically in response to your maneuvers. The remote will make an audible beep that changes pitch to indicate different modes.



CHANGING COLORS WITHIN EACH MODE

To change colors within a currently selected mode, PRESS and HOLD the FX button. While continuing to hold the button, tap the Stunt/Colors button to toggle through the color options. RELEASE the FX button after selection.

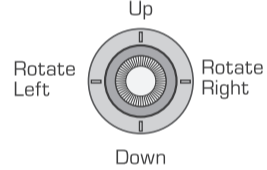


REDUCE LIGHTING for LONGER DAYTIME FLYING

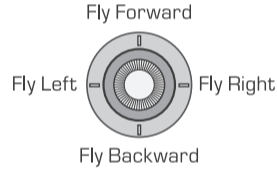
TAP the FX button to toggle through the light modes until you hear a negative beep tone, indicating basic flight lighting only. TAP the FX button again to change your lighting selection.

FLIGHT CONTROLS

THROTTLE STICK



DIRECTIONAL STICK



Stunt/Color

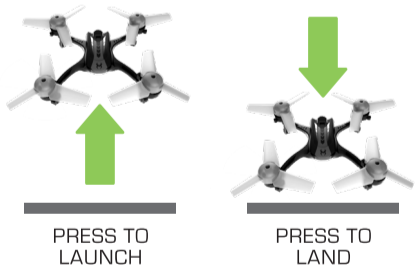
Power Button

Light FX Mode Button

EMERGENCY STOP

If for any reason you need to immediately stop the drone, PRESS and HOLD the Power button to initiate an emergency disarm, cutting power to the motors.

LAUNCH/LAND BUTTON



PRESS TO LAUNCH

PRESS TO LAND

DUAL FLIGHT MODES

After turning power on, you can toggle from Normal flying mode to Sport flying mode by quickly tapping the power button. Normal mode is better for casual flying and beginners. Sport mode increases drone responsiveness and may be preferred by experience pilots.

Quick TAP for **NORMAL** (1 beep) Quick TAP for **SPORT** (2 beeps)

ONE TOUCH STUNTS

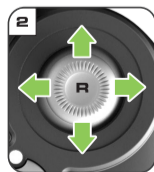
BARREL ROLL LEFT OR RIGHT

While flying forward (or reverse), tap the STUNT button.



FLIP IN 4 DIRECTIONS

While hovering, hold the STUNT button and tap the direction stick in the direction you want the drone to flip.



CAUTION!

The drone should be flying at least 10 feet in the air with a minimum clearance of 10 feet in all directions before attempting stunt functions.

TROUBLESHOOTING

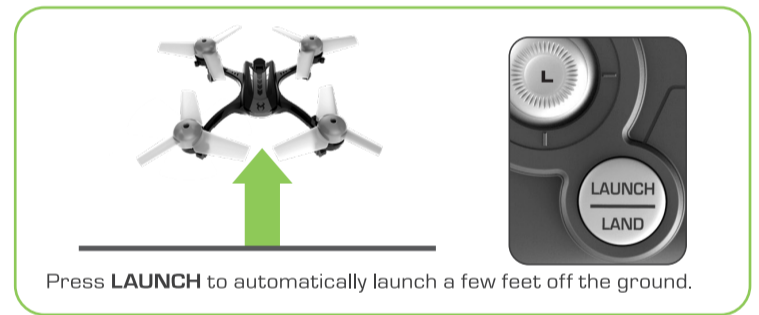
If drone does not function properly, please check and add new batteries in the controller.

If your drone won't launch, you may need to calibrate the sensors.

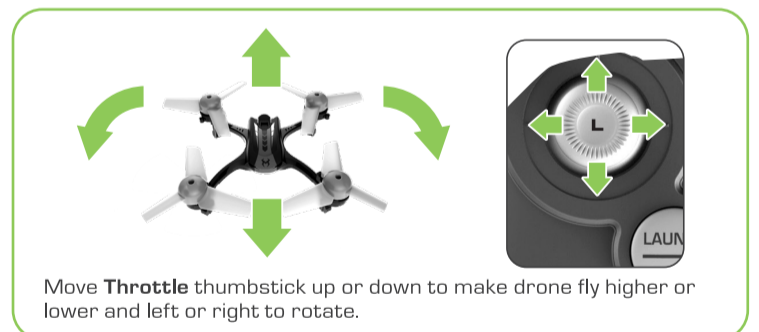
- Power on drone and place on a level surface. Power on controller.
- Controller will play four beeps when the sensors have been calibrated.

FLIGHT BASICS

To make flying easier, place the drone on the ground in front of you with the drone facing away from you (green blades forward). You should be facing the same way the drone is facing.



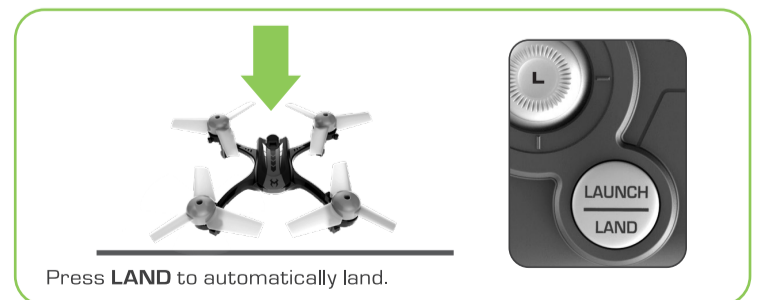
Press **LAUNCH** to automatically launch a few feet off the ground.



Move **Throttle** thumbstick up or down to make drone fly higher or lower and left or right to rotate.



Use **Directional** thumbstick to fly forward, backward, left or right.



Press **LAND** to automatically land.

You can also manually land the drone by holding throttle in the down position to descend. Continue holding down once the drone reaches the ground. When the drone recognizes it has landed, the controller will play two beeps and the propellers will stop spinning.

ADJUSTING TRIM TO CORRECT DRONE DRIFTING

Nova is pre-calibrated to maintain a stationary hover after launch, if no additional input is received from the controller. Should the drone drift in any direction, you can adjust trim to compensate.

For sideways drift, stand directly behind the drone as it hovers (battery compartment facing you), then press and HOLD the Launch/Land button until the controller beeps 3x to indicate trim mode. While continuing to hold the button down, TAP the Directional thumbstick in the opposite direction that the drone is drifting. Tap once for a small adjustment, tap additional times to incrementally increase the amount of correction. Once the drone stops drifting, RELEASE the Launch/Land button to save the adjustment.

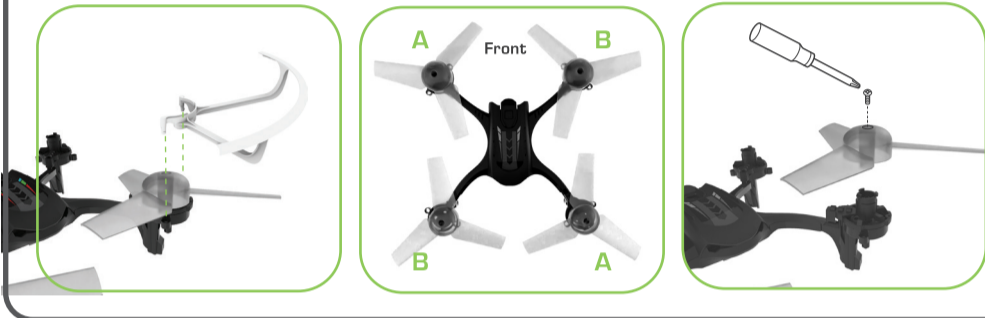
Note: Directional trim is only adjusted in 4 primary directions, so a diagonal correction is made by making adjustments to the 2 adjacent primary directions.

For spinning drift, press and HOLD the Launch/Land button until the controller beeps 3x. While continuing to hold the button down, TAP the throttle stick Left to compensate for a clockwise spin...or TAP right to compensate for a counterclockwise spin. RELEASE Launch/Land to save the adjustment.

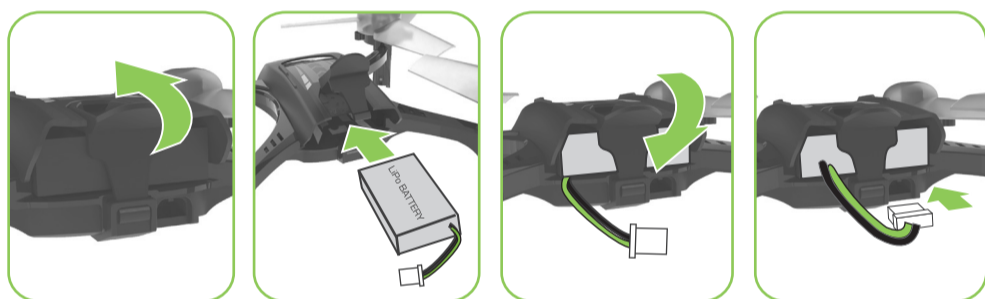
INSTALLING BLADE GUARDS AND REPLACING DAMAGED PROPELLERS

Blade guards are not required for flight, but are recommended for extending the life of the propellers, especially if you are a beginning pilot. Insert blade guards into motor mounts as shown.

Use the included screwdriver to remove propellers, then pull up to detach. Both propellers and motor mounts are marked with a letter. Propellers must be properly matched with the corresponding motor mount in order for the drone to fly properly.



CONNECTING BATTERY



Open the battery latch (Press back of latch and flip down)

Insert battery

Close the battery latch

Connect the battery

ADULT SUPERVISION REQUIRED

Before each use, an adult should check this product and the LiPo battery to ensure no damage or hazards exist. Drone has rotating blades that move at high speed, posing danger of damage and injury. Use of included blade guards strongly recommended. Pilots are responsible for any actions that result in damage or injury from the improper operation of drone. Adequate flying space is required. Avoid flying near interior fans and/or vents as they may make flying difficult to control. Keep a safe distance away from streets, public thoroughfares and power lines. Never attempt to retrieve drone from any location higher than your reach (such as rooftops or trees) or from any location that poses a safety hazard. Never fly drone at night. Keep drone in sight at all times during operation. Discontinue operation immediately if drone flies out of your field of view. Do not fly near spectators or animals. Keep spinning rotors away from fingers, hair, eyes and other body parts. Always launch from a flat surface. Never leave drone unattended while it is turned on. Read all enclosed information before operating.

THIS PRODUCT CONTAINS A LITHIUM-POLYMER BATTERY 3.7V 1200mAh:

LiPo batteries have a severe risk of fire and injury if they are improperly handled or misused. They may explode, overheat or ignite. Read all following precautions and instructions regarding the care and use of LiPo batteries.

The LiPo battery is only to be used with the drone and charger included with this product.

- Keep away from flammable materials.
- Do not expose to direct sunlight.
- Do not place in fire or leave in hot places.
- Do not drop or make subject to strong impact.
- Keep dry and away from water.
- Remove exhausted battery as soon as possible and discard properly.
- Remove battery from the compartment if toy is not used for a long period of time.
- The supply terminals are not to be short circuited.
- Never throw battery in a fire or attempt to open outer casing.
- Do not leave battery connected to drone when not in use.
- Do not stress, press or drop the battery.
- Never charge battery unattended. When charging battery you should always remain in constant observation to monitor the charging process and react to potential problems that may occur.
- Disconnect with the charging wire if the battery is fully charged.
- Never store or charge battery inside the car in extreme temperatures, since extreme temperature could ignite fire.
- Use caution to avoid puncture of the battery. Puncture of battery may cause a fire.

LiPo Battery Disposal: LiPo batteries must be recycled or disposed of properly. They should not be disposed of with other household waste. Check your local laws and regulations for correct recycling and/or battery disposal.

AAA BATTERY CAUTIONS

- Do not use rechargeable batteries.
- Non-rechargeable batteries are not to be recharged.
- Do not mix old and new batteries and Do not mix alkaline, standard (carbon-zinc) or rechargeable (ni-cad, ni-mh, etc.) batteries.
- Batteries are to be inserted using correct polarity (+ and -).
- Remove exhausted batteries as soon as possible and discard properly.
- Remove all batteries from compartment if toy is not used for a long period of time.
- The supply terminals are not to be short circuited.
- Batteries should be replaced by an adult.
- Never throw batteries in a fire or attempt to open the outer casing.

WARNING: Batteries are harmful if swallowed. Please keep away from children.

Battery Disposal: Dispose of batteries according to the local laws and regulations of your region. Some batteries may be recycled, and may be accepted for disposal at your local recycling center. If you are not able to identify the applicable rules in your area, please check the instructions of the battery manufacturer.

CONTENTS

- Nova Drone
- USB Charging Cable
- Rechargeable 3.7V 1200 mAh LiPo Battery
- 4 Replacement Propellers
- Screwdriver & Extra Screws
- Controller
- 4 Blade Guards

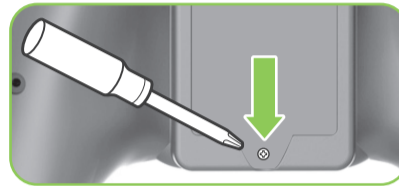
FLY MORE!

Why wait for your battery to recharge. Increase your flight time with an extra battery on standby! (Sold separately).

Sky Viper 1200mAh LiPo battery recommended, or comparable 3.7V LiPo battery with JST connector plug.



INSTALLING BATTERIES IN THE CONTROLLER

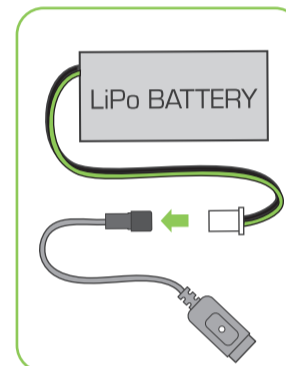


*Batteries not included.

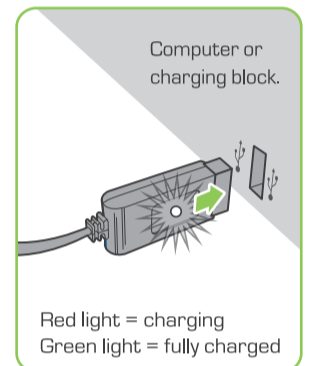
CHARGING THE LiPo BATTERY



Remove LiPo battery from compartment and unplug cable



Plug battery into USB charging cable



Red light = charging
Green light = fully charged

Insert charging cable into USB charging block or computer. Charge until light turns green then unplug.

CHARGING PRECAUTIONS:

- After use, allow battery to cool down to room temperature before charging again.
- Charge battery in an isolated area, away from excessive heat or moisture.
- If you suspect that the battery is damaged or swelling, discard the battery in accordance with your country's recycling laws.
- Do not modify, heat, or wet the battery in any way. Only recharge with provided charger.

FAILSAFE GUIDE

- When the drone turns upside down, the motors will stop spinning.
- When the drone goes out of range of the controller, it will automatically land itself in its current position. If the controller comes back in to range before the drone lands, press up on throttle to cancel landing.
- When the drone's battery is low, the LEDs on the drone will begin to blink rapidly, and a tone is played continuously on the controller. The drone will begin to land. Press up on throttle to cancel landing.
- When the drone's battery is depleted, the drone will automatically land itself in its current position. This automatic landing cannot be interrupted with the controller.
- When the propeller is jammed or blocked by an obstacle switch off the controller immediately to prevent possible or further damage.

This device complies with PART 15 of the FCC Rules. Operation is subject to the following two conditions. (1) This device may not cause harmful interference, and (2) this device must accept any interference received, including interference that may cause undesired operation.

CAUTION: Changes or modifications to this unit not expressly approved by the party responsible for compliance could void the user's authority to operate the equipment.

NOTE: This equipment has been tested and found to comply with the limits for a Class B digital device, pursuant to Part 15 of the FCC Rules. These limits are designed to provide reasonable protection against harmful interference in a residential installation. This equipment generates, uses and can radiate radio frequency energy and, if not installed and used in accordance with the instructions, may cause harmful interference to radio communications. However, there is no guarantee that interference will not occur in a particular installation. If this equipment does cause harmful interference to radio or television reception, which can be determined by turning the equipment off and on, the user is encouraged to try to correct the interference by one or more of the following measures: Reorient or relocate the receiving antenna - Increase the separation between the equipment and receiver - Connect the equipment into an outlet on a circuit different from that to which the receiver is connected - Consult the dealer or an experienced radio/TV technician for help.

WARNING: This toy produces flashes that may trigger epilepsy in sensitized individuals.

Remove all packaging attachments before giving the toy to a child. Not suitable for children under 3 years due to small parts that could be swallowed. Conforms to product safety standards ASTM F963. Keep instructions for future reference. Do not discard.

WE'RE HERE TO HELP
For questions about this product:
support@skyrockettoys.com

©2024 Skyrocket LLC, Los Angeles CA 90292 USA. All Rights Reserved. Skyrocket and their respective logos are trademarks and/or registered trademarks of Skyrocket Toys LLC. All other trademarks, logos and copyrights are the property of their respective owners, and there is no relationship express or implied with Skyrocket Toys LLC.

MADE IN CHINA. SKYROCKET

The software included in this product contains copyrighted software that is licensed under the GPLv3. A copy of that license is included in our website at the URL below. You may obtain the complete Corresponding Source code from us for a period of three years after our last shipment of this product and/or spare parts therefor, which will be no earlier than 05-01-2021, on our website at <http://www.skyviper.com/opensource>

MODEL NO: 18726

PATENT PENDING



WARNING:
CHOKING HAZARD - Small parts.
Not for children under 3 years.