



# User Manual

**Model : Sport**

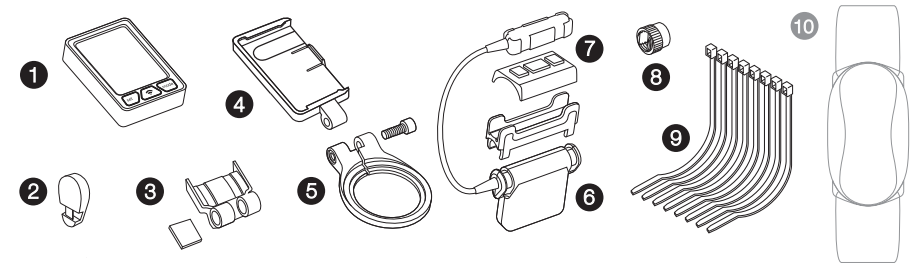




## Table of contents

Components of the Sport Double Wireless	3	Specifications and ranges	31
Installing Computer Mounts	4	Troubleshooting	32
Installing speed & cadence transmitter	5	Warranty information	33
Sport Double Wireless user interface	6		
Easy set-up and resetting	7		
Using your Sport Double Wireless (keyflow)	14		
Linking	16		
Re-entering pairing sequence	18		
Clearing data	20		
Re-setting the clock	22		
Re-setting the odometer and mi/km	24		
Re-setting wheel/tire size	26		
Manually setting wheel/tire size	27		
Replacing the battery	30		

## Components of the Sport Double Wireless



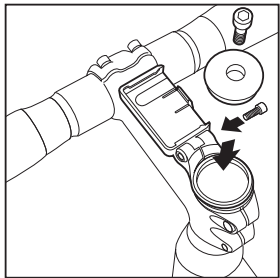
1. Speedzone cyclo-computer head unit
2. Cadence magnet
3. Handlebar bracket
4. Base mount
5. Steerer tube bracket
6. Speed transmitter
7. Cadence sensor
8. Spoke magnet
9. Zip ties
10. Digital heart rate strap (sold separately)



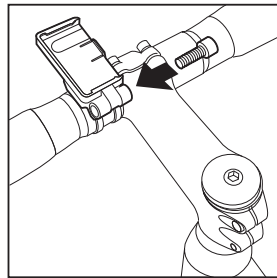
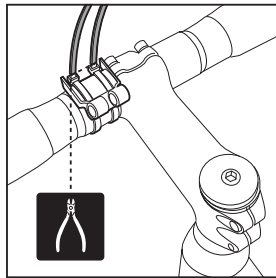
## Installing Computer Mounts

- Install the **steerer tube bracket** base assembly on the steerer tube. Re-install the steerer tube top cap.
- Place **handlebar bracket** on handlebar, attach the base mount to the handlebar bracket with the included bolt.
- Adjust base to desired angle with bolt adjustment.

**steerer tube bracket**



**handlebar bracket**

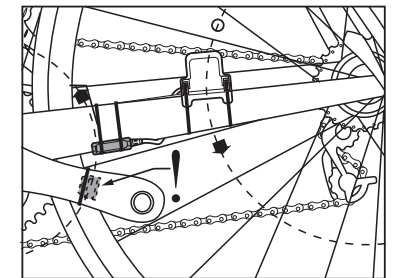
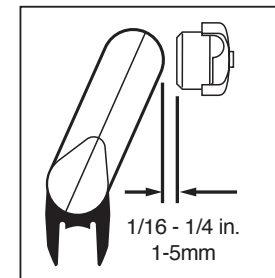
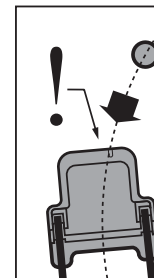


4

## Installing speed & cadence transmitter

Adjust spoke magnet so path of rotation passes along the groove area inside the sensor. **IMPORTANT:** Placing magnet outside the groove path may cause improper reading.

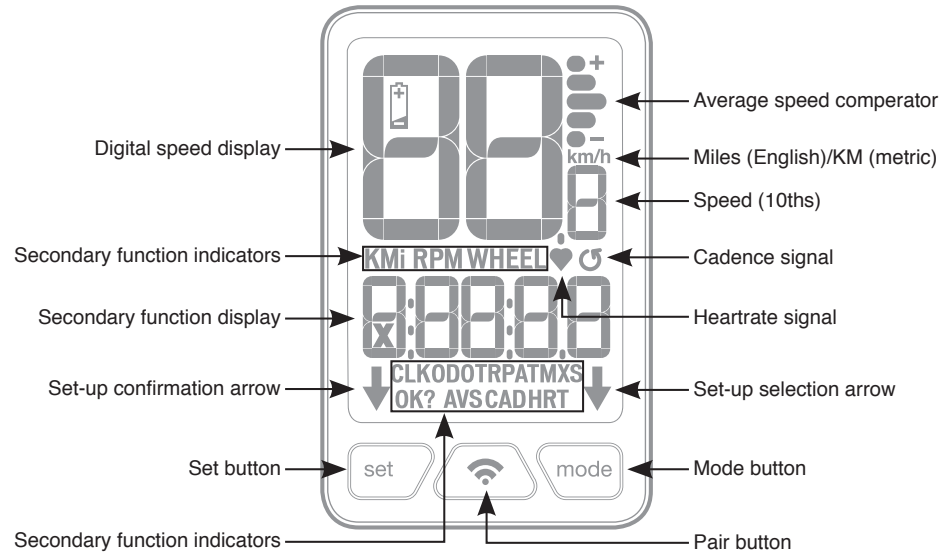
- Attach the cadence magnet with self adhesive pad to the crank arm, and position the sensor's raised line within the magnet's rotation path.



5



## Speedzone Sport Double Wireless interface



\*Illuminated when signal is paired

## Easy set-up and resetting

### Wake from shipping mode

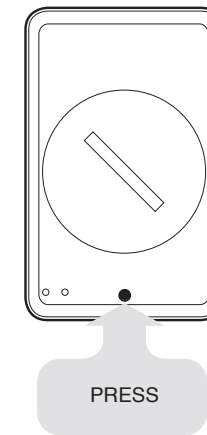


Hold **PAIR BUTTON** for 2 seconds to initiate easy setup; this is only required to wake unit from shipping mode (first purchased).



OR

### Reset and all clear



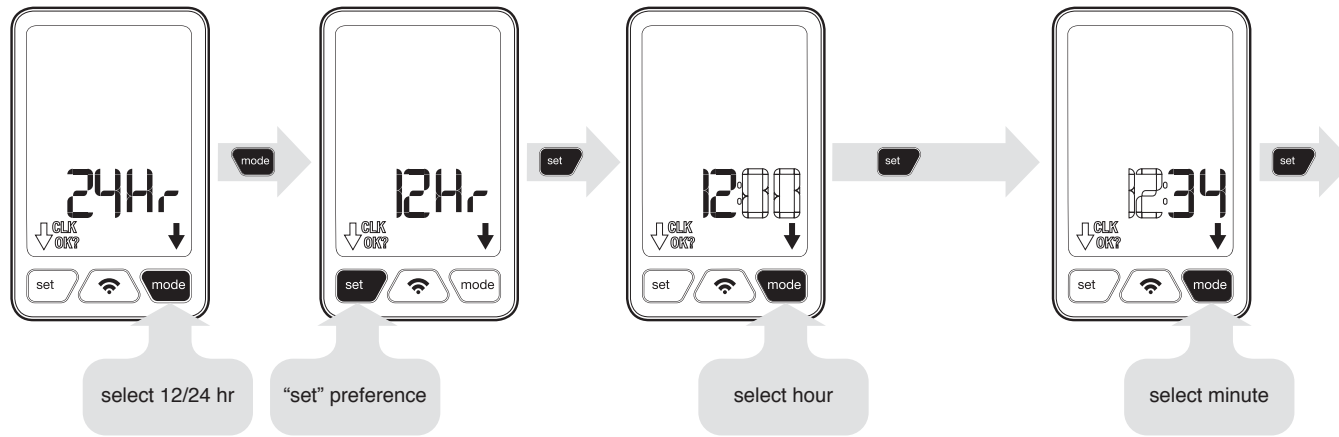
Press **RESET BUTTON** to enter easy set up.

PRESS



# Clock setting

From initial start-up:



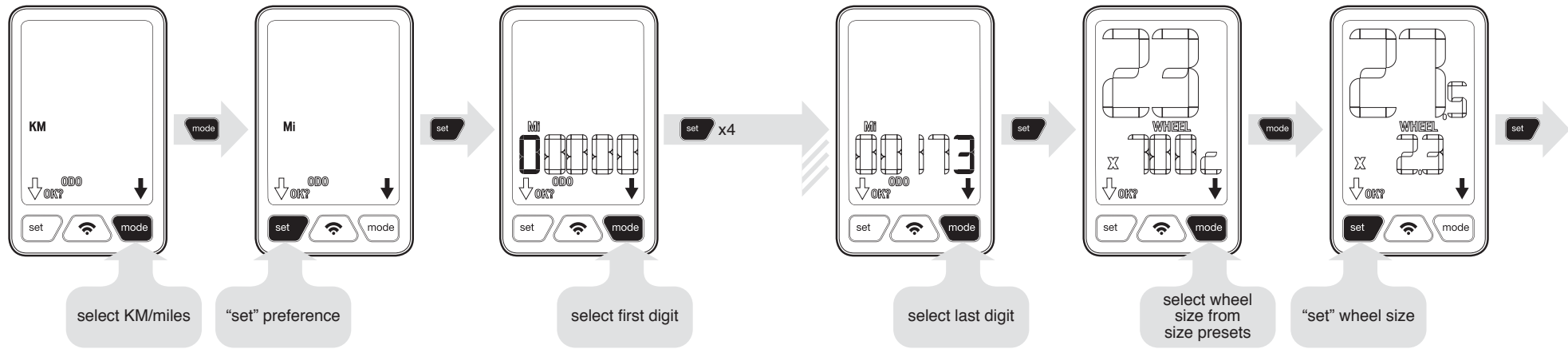
# ...continued



## Metric (km) or English (mi) & odometer

## Wheel and tire size selection

(To manually set wheel size see page 27)

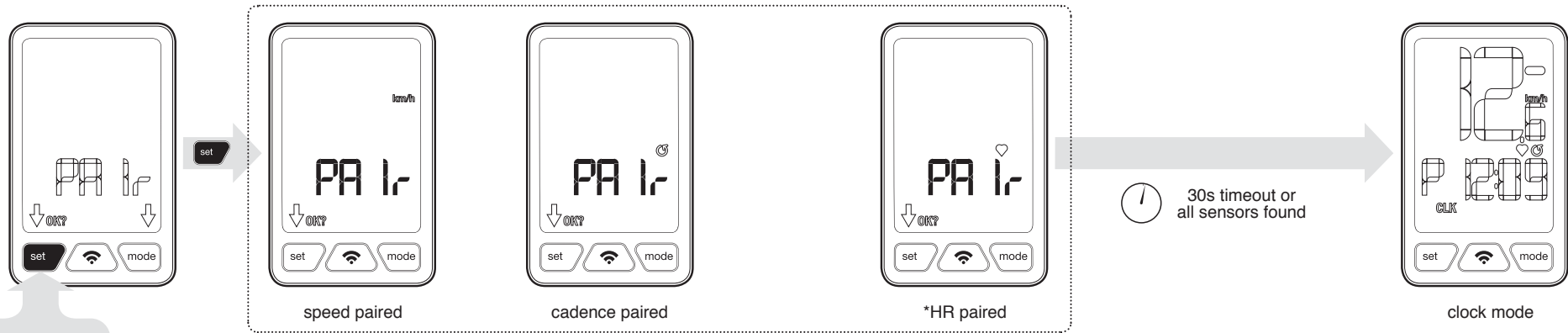




## Pairing digital ANT+™ wireless device

Head unit is searching for speed, cadence, and heart rate transmission signal from ANT+ digital transmitters. (To re-enter pairing sequence see page 18)

...continued




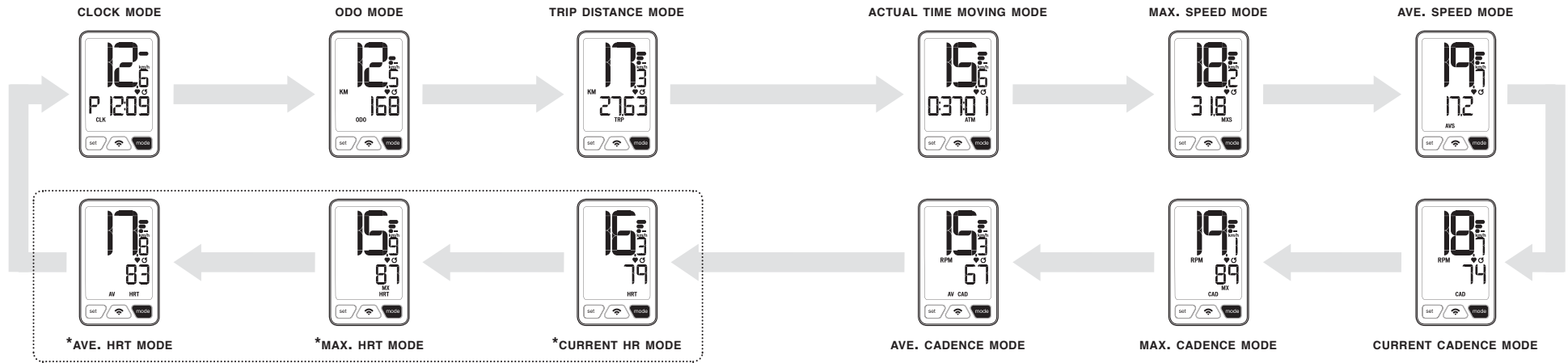
\*Heart rate monitor sold separately



# Using your Speedzone Sport Double Wireless (keyflow)

...continued

PRESS  to shuffle through modes

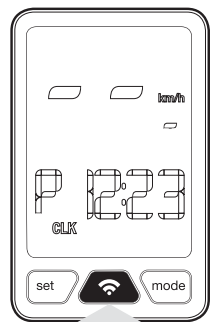






## Linking

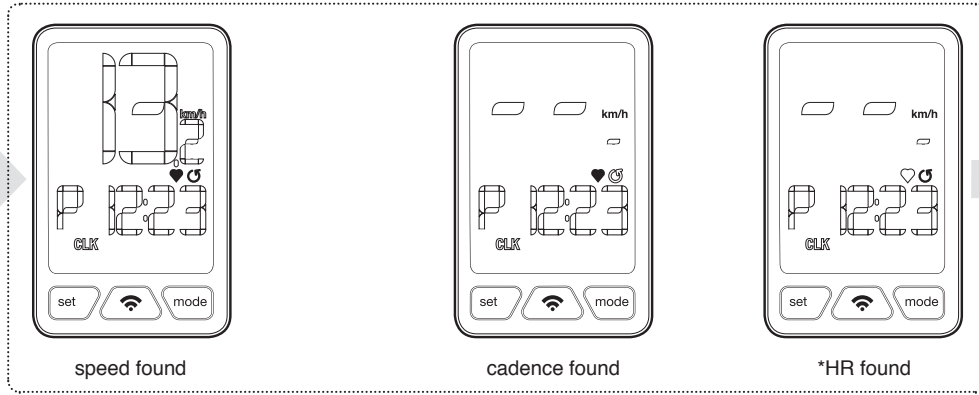
→ When waking from **SLEEP MODE** the computer will automatically search for previously paired sensors.



press PAIR



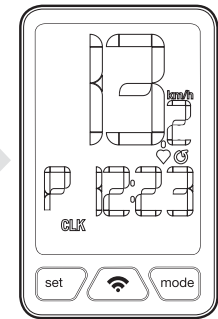
searching



speed found

cadence found

\*HR found



found sensors will stop flashing and remain solid

## ...continued

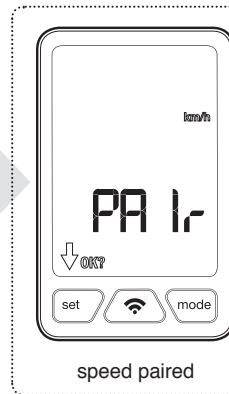
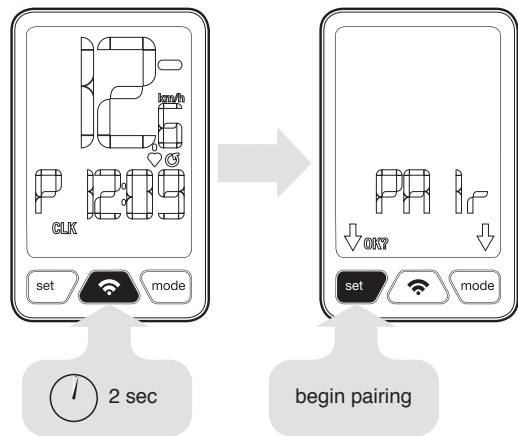
→ From **ANY MODE** press **PAIR BUTTON** to search for previously paired sensors.

\*Heart rate monitor sold separately



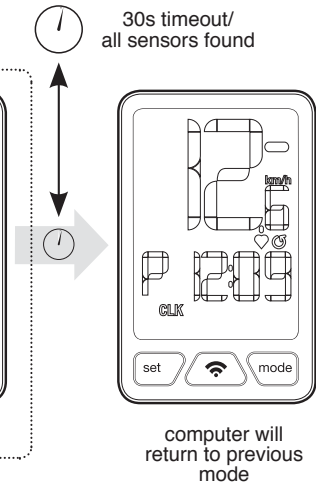
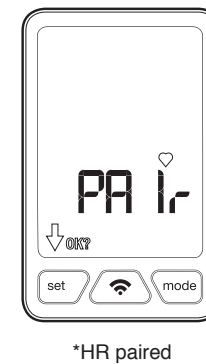
## Re-entering the pairing sequence

In **ANY MODE**, press and hold **PAIR BUTTON** for **2 SECONDS**. Every wireless device must be ANT+ compatible device to transmit data.



## ...continued

PRESS **set** to stop pairing OR 30s timeout/  
all sensors found



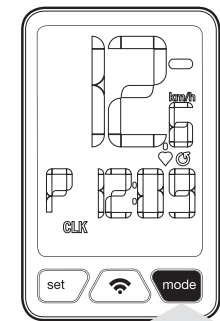


## Clearing Data

- In **MAX SPEED MODE** press and hold **MODE BUTTON** for **2 SECONDS** to clear maximum speed.
- In **MAX CADENCE MODE** press and hold **MODE BUTTON** for **2 SECONDS** to clear maximum cadence.
- In **MAX HEART RATE MODE** press and hold **MODE BUTTON** for **2 SECONDS** to clear maximum heart rate.
- In **ALL OTHER MODES** press and hold **MODE BUTTON** for **2 SECONDS** to clear all data except odometer.

## ...continued

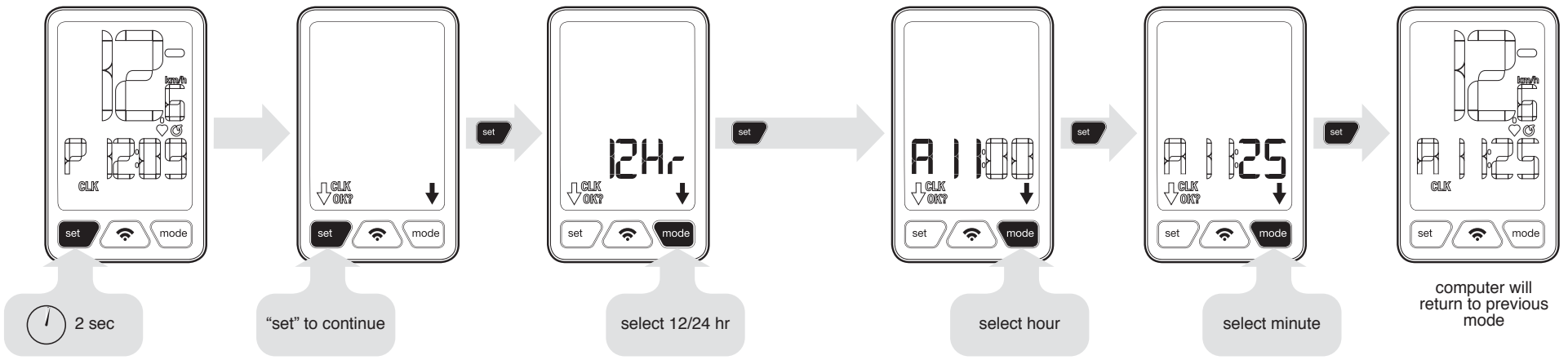
PRESS  FOR  2 seconds to clear data





## Re-setting the clock

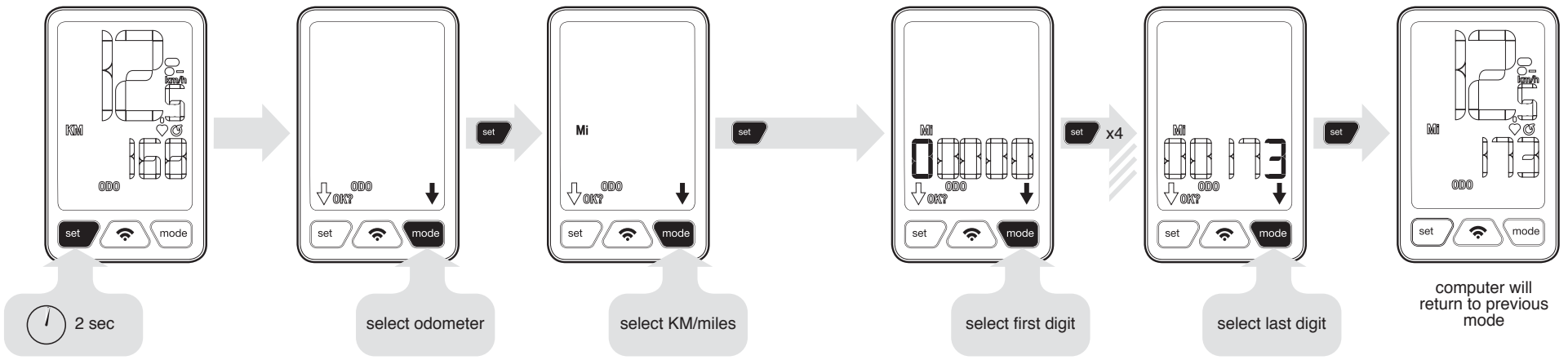
In **ANY MODE** press and hold **SET BUTTON** for **2 SECONDS** to enter setting mode. Press **SET BUTTON** to set clock.





## Re-setting the odometer and miles/kilometers

In **ANY MODE** press and hold **SET BUTTON** for **2 SECONDS** to enter setting mode. Press **MODE BUTTON**, then **SET BUTTON** to set odometer.



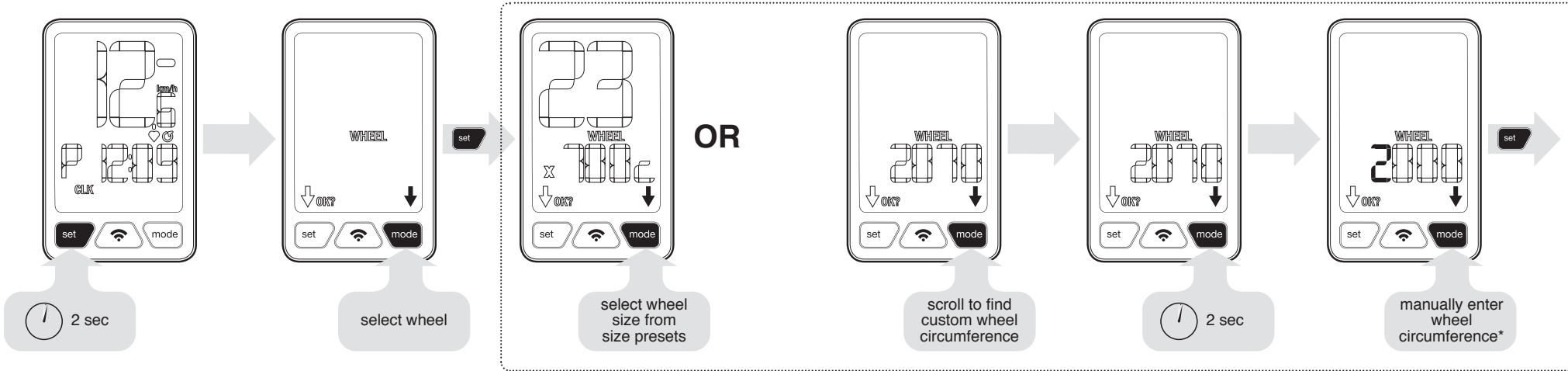


## Re-setting wheel/tire size

In **ANY MODE** press and hold **SET BUTTON** for **2 SECONDS** to enter setting mode. Press **MODE BUTTON TWICE**, then **SET BUTTON** to set wheel/tire size.

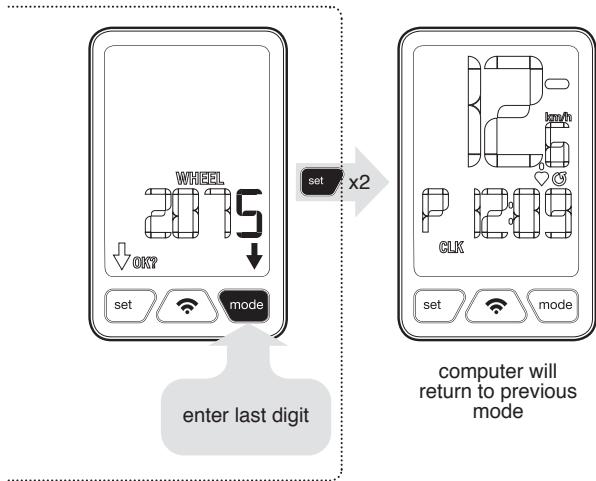
## Manually entering wheel circumference

Using **MODE BUTTON** find custom circumference. Hold **MODE BUTTON** for **2 SECONDS** to enter custom circumference.



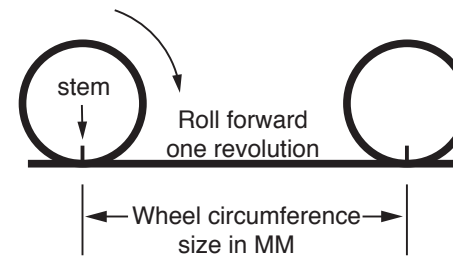


## continued... entering wheel circumference



## Calculating wheel circumference

- Mark your tire and the ground where they meet. Roll bike forward full revolution and mark the point on the floor.
- Measure the distance in millimeters and enter digits.



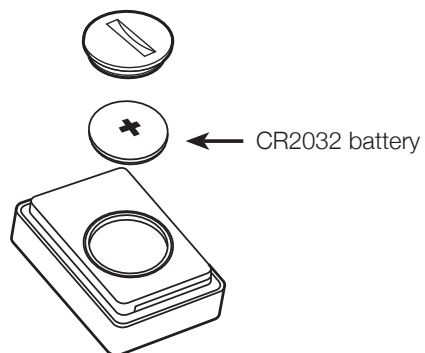
TIRE SIZE	SIZE/MM
26x1.25	1949
26x2.0	2066
26x2.2	2075
27.5x2.1	2135
27.5x2.3	2160
29x2.1	2224
29x2.3	2245
650x23c	1930
700x21c	2092
700x23c	2102
700x25c	2113
700x28c	2138
700x32c	2161
700x35c	2175
700x38c	2187
Custom	0-2999



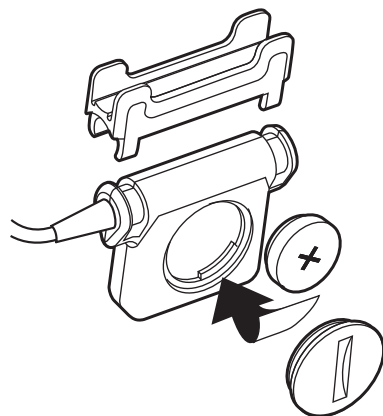
## Replacing the battery

Rotate battery cover quarter turn to remove battery.

### HEADUNIT



### SPEED/CADENCE SENSOR



## Specifications and ranges

### TIME OF DAY

- 24 hours with one minute resolution
- Function in either 12 or 24 hour formats

### HEART RATE

- 30 -240 beats per minute (bpm)

### ODOMETER

- 99999 miles or kilometers
- 1 mile or 1 kilometer resolution

### BATTERY LIFE

- 200 - 300 hours
- Speed/Cadence sensor 400 hours
- Heart rate sensor 400 hours
- Ride duration & frequency may affect total life

### WHEEL SIZE

- 15 pre-programmed wheel sizes
- Wheel circumference measured in millimeters

### SPEED

- 0-99.9 MPH KPH
- 0.1 MPH or KPH resolution

### CADENCE

- 30 - 240 RPM with 1 RPM resolution





## Troubleshooting

- Display is blank or shows partial digits: Change the battery or reset the computer (page 30).
- Speed/Distance is not recording: Attempt to link sensor (page 16). If linking does not work, attempt to pair sensor (page 18). If linking and pairing do not work, check speed sensor/magnet alignment (page 5). If none of the aforementioned work, change battery on speed sensor and computer (page 30).
- Computer moves on handlebar: tighten hinge bolt or tie straps. Check rubber spacer between handlebar and mount.

### Important:

- Pay attention to traffic and road condition at all times and always obey traffic laws. Your first obligation is to be attentive and ride safely.
- Never let the operation of the computer distract from riding safely and avoid resetting, troubleshooting or programming the computer while riding.
- Keep the computer and all of its components tightly attached and check them regularly. If any of the components come loose, it could become tangled in the spokes or mechanism of the bicycle and cause an accident.
- Speedzone computer is intended for use on bicycle only and should not be used on motorized vehicles.
- See your authorized Specialized dealer if you have trouble installing or operating the computer.

## Warranty information

Specialized Bicycle Components Inc. ("Specialized") warrants to the original purchaser that this product is free of defects in material and workmanship under normal use for period of two (2) years from the date of original purchase from an authorized Specialized retailer. If this product is found to be defective in material or workmanship within two (2) years from the date of original purchase, Specialized will in its sole discretion repair or replace this product without charge, provided the original purchaser returns the product securely packaged, postage prepaid to:

Specialized Bicycle Components Inc.  
1475 S 5070 W, Suite A  
Salt Lake City, UT, 84104, USA  
Attn: Warranty

The original purchaser must also include a letter indicating the specific reasons for returning this product and proof of purchase.

This warranty does not apply to and is void as to physical damage resulting from neglect, abuse, alterations, modifications or use contrary to that intended by the manufacturer. Specialized disclaims all implied warranties including those of merchantability and fitness for particular purpose. Specialized can not be held liable for consequential damages.

Full Service and troubleshooting guide and manuals can be found at [www.specialized.com](http://www.specialized.com)





FCC ID: O4GSPORTDWL

MADE IN CHINA

This device complies with part 15 of the FCC Rules.

Operation is subject to the following two conditions: (1) This device may not cause harmful interference, and (2) This device must accept any interference received, including interference that may cause undesired operation.

**NOTES:**

The grantee is not responsible for any changes or modifications not expressly approved by the party responsible for compliance. Such modifications could void the user's authority to operate the equipment.



**CAUTION:**

RISK OF EXPLOSION IF BATTERY IS REPLACED BY AN INCORRECT TYPE.

**CAUTION:**

DISPOSE OF USED BATTERIES ACCORDING TO THE INSTRUCTIONS.

