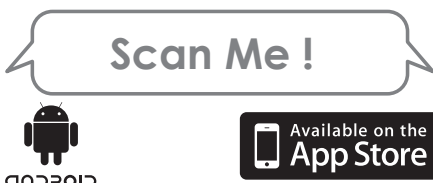


iRetroPhone™ Bluetooth

Instruction Manual



Download the Konnext™ iRetroPhone™ App from iTunes Store & Android Market:

iTunes Store - <http://itunes.apple.com/us/app/iretrophone/id463261513?mt=8>

Android Market - <https://market.android.com/details?id=com.softembed.iretrophone>

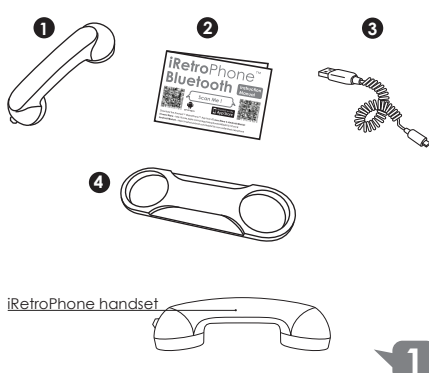
WELCOME

Thank you for buying the iRetroPhone Bluetooth Handset, you will love this new experience of wireless, comfortable and radiation safe talk.

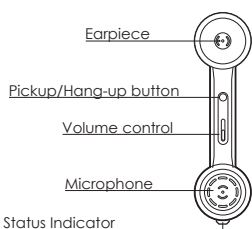
For the most up-to-date information, be sure to check our Web site at www.konnext.com

HAT YOU GET IN THIS PACKAGE

1. One iRetroPhone Bluetooth Handset
2. One instruction manual
3. USB charging cable
4. Silicone Pad



LOCATION OF CONTROLS



How to use the iRetroPhone Bluetooth Handset:

PLEASE READ THESE INSTRUCTIONS CAREFULLY before using your new handset.

IMPORTANT SAFETY INSTRUCTIONS READ BEFORE OPERATING EQUIPMENT

This product was designed and manufactured to meet strict quality and safety standards. There are, however, some installation and operation precautions which you should be particularly aware of:

1. Read these instructions.
2. Keep these instructions.
3. Heed all warnings.
4. Follow all instructions.
5. Do not use this apparatus near water.
6. Clean only with dry cloth.
7. Do not install near any heat sources such as radiators, heat registers, stoves, or other apparatus (including amplifiers) that produce heat.
8. Only use attachments/accessories specified by the manufacturer.

CONNECTING YOUR iRetroPhone Bluetooth TO YOUR MOBILE PHONE

PAIRING

STEP1

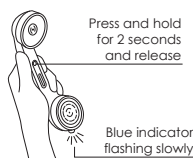
Turn on the Bluetooth feature of the device which you wish to pair with (for information enabling the Bluetooth feature on your device, please read the instructions provided by the manufacturer of the device.)



STEP2

Setting the Bluetooth iRetroPhone Handset in pairing mode:

- Press and hold down the Pick up/Hang up button for 2 seconds as shown. A blue indicator light shall start to flash, continue to hold down the button then release the button until a red and blue indicator light starts flashing.
- Release the button Pick up/Hang up. Follow the pairing instructions for your cell phone or other Bluetooth device. If your device prompts for passkey, please enter "0000" (four zeros).



TURNING OFF

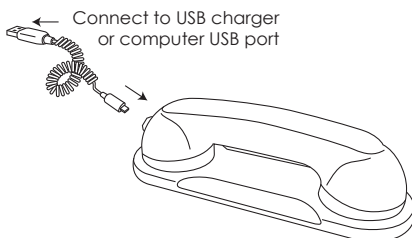
Press and hold down the button for 5 seconds until the light turns off.

TURNING ON

Press and hold down the Pickup/Hang up button for 2 seconds until the light turns on.

CHARGING

To Charge the iRetroPhone Bluetooth Handset, please connect the handset with the micro USB charging cable as shown. The status indicator shall light in red indicating the handset is charging, the indicator light shall turn off when the handset is fully charged..



BE CAREFUL not to force the adaptor into your mobile phone, you could damage it. We can not be held responsible for any damage you will do to your mobile phone while trying to plug your iRetroPhone Bluetooth Handset. Depending on your brand and model of mobile phone, a message or logo may now appear to your screen indicating that the iRetroPhone Bluetooth Handset have been detected.

MAKING A CALL

Once your iRetroPhone Bluetooth Handset is connected to your mobile phone, you can make a call as you normally do it.

ANSWERING AN INCOMING CALL

Most mobile phone will support the iRetroPhone answer button function. Just press the central button on the handle of the handset and it will work as your mobile phone answer button. If your mobile phone doesn't support the answer button function, you can then answer the call by pressing the regular answer button on your mobile phone.

DISCONNECTING A CALL

Once you have terminated your conversation, simply press the answer button of the iRetroPhone Bluetooth Handset again and you will be disconnected. If your mobile phone doesn't support the answer button function, you can then disconnect the call by pressing the regular disconnect button on your mobile phone.

LAST NUMBER DIALLED

Depending on your mobile phone brand and model, you may be able to redial the last number called by simply pressing the iRetroPhone Bluetooth Handset answer button TWICE while phone in standby.

VOICE ACTIVATED DIALING

The iRetroPhone Bluetooth Handset also supports "voice activated dialing" with certain brand and model of mobile phones. Before you can use this function, you need to set up voice tags on your mobile phone (please check your mobile's phone instruction manual for more details). To make a voice activated call, hold down the answer button of the iRetroPhone Bluetooth Handset until you hear a "bip". You must then pronounce the name of the contact you wish to call.

TROUBLE SHOOTING

If you are having problems using your iRetroPhone Bluetooth Handset, please go to www.konnext.com for further help and information, or consult your local retailer.

LIMITED WARRANTY

If the product appears to be damaged or does not function properly, please follow the advice in this booklet. If you can not find any solution in this booklet, please go to www.konnext.com for instructions about how to obtain warranty service.

FCC WARNING

This device complies with Part 15 of the FCC Rules. Operation is subject to the following two conditions:

- (1) This device may not cause harmful interference, and
- (2) this device must accept any interference received, including interference that may cause undesired operation.

NOTE 1: This equipment has been tested and found to comply with the limits for a Class B digital device, pursuant to part 15 of the FCC Rules. These limits are designed to provide reasonable protection against harmful interference in a residential installation. This equipment generates, uses and can radiate radio frequency energy and, if not installed and used in accordance with the instructions, may cause harmful interference to radio communications. However, there is no guarantee that interference will not occur in a particular installation. If this equipment does cause harmful interference to radio or television reception, which can be determined by turning the equipment off and on, the user is encouraged to try to correct the interference by one or more of the following measures:

- Reorient or relocate the receiving antenna.
- Increase the separation between the equipment and receiver.
- Connect the equipment into an outlet on a circuit different from that to which the receiver is connected.
- Consult the dealer or an experienced radio/TV technician for help.

NOTE 2: Any changes or modifications to this unit not expressly approved by the party responsible for compliance could void the user's authority to operate the equipment.