

Circuit Description

It's a remote control with a RF function for a Medical treatment device. The remote control's working voltage is 3V, its working current is less than 15mA when in operation. Frequency Range is 2.404~2.477GHz. and a clock frequency of 16MHz as base clock signal.

This remote control has 2 keys, these keys were used to make the hospital bed up / down.

And the remote control's electronic parameters are as follows:

1. Modulation: GFSK
2. Frequency Range: 2.404~2.477GHz
3. Transmitted Power: 0 dBm
4. Working Current: <15mA
5. Ambient Temperature: -40—85°C
6. Battery: 2 AAA battery, 3V
7. PCB Material & Size: FR4 1.0mm 55*38.3mm

Antenna Specification:

Type of Antenna: PCB Antenna

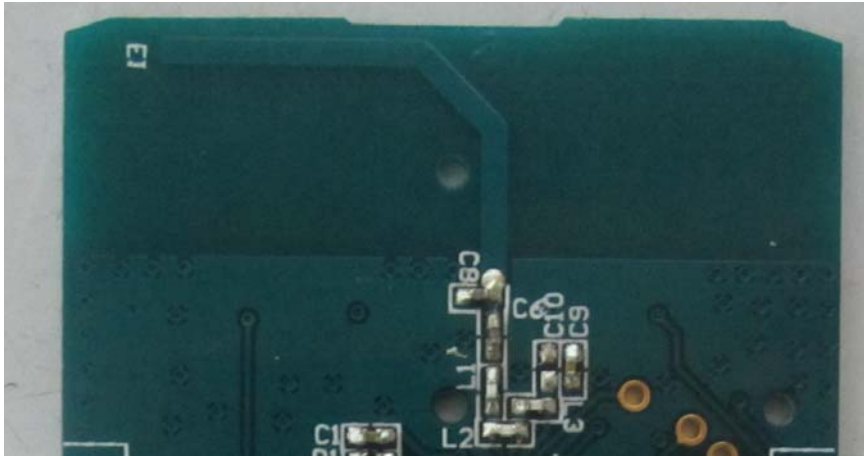
Frequency Range: 2400-2483.5MHz

Maximum Gain: -0.20 dBi

Impedance: 50 ohm

Size: 17mm x 11mm

Antenna View



Antenna Location

