

1 Annex C – documentation

1.1 List of Pictures

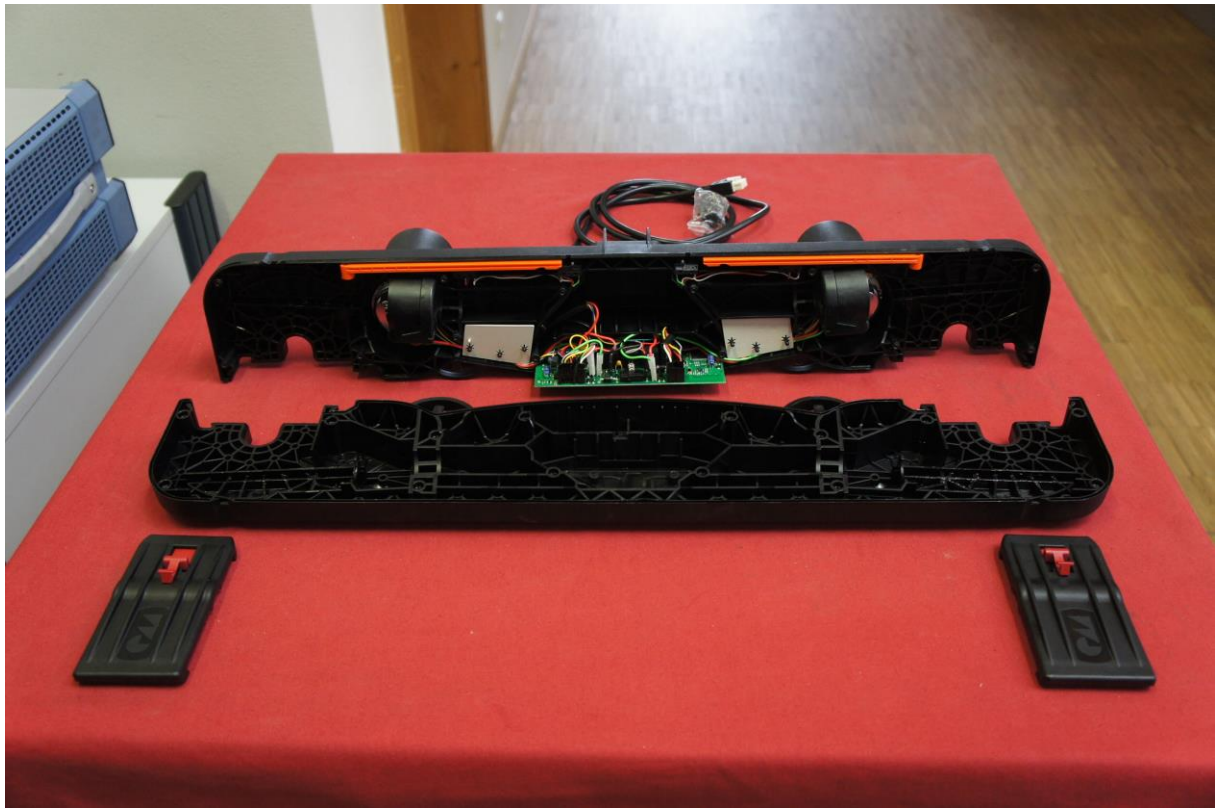
Picture 1: EUT - open housing.....2
Picture 2: EUT - location main PCB.....2
Picture 3: EUT - main PCB, bottom side3
Picture 4: EUT - main PCB, top side, location RF part3
Picture 5: EUT - main PCB, top side, RF part.....4



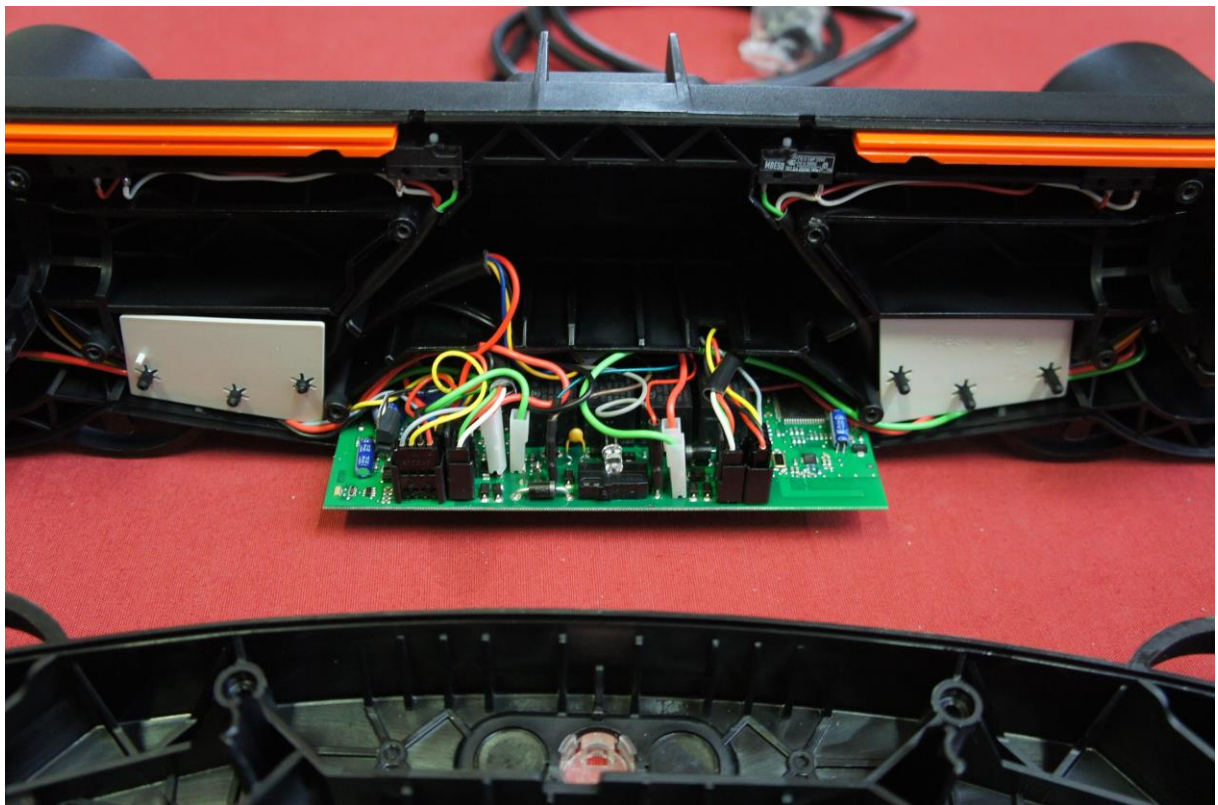
EMV **TESTHAUS** GmbH
Gustav-Hertz-Straße 35
94315 Straubing
Germany

DewertOkin GmbH
twin drive
OKIMAT 8+2 FURNIBUS

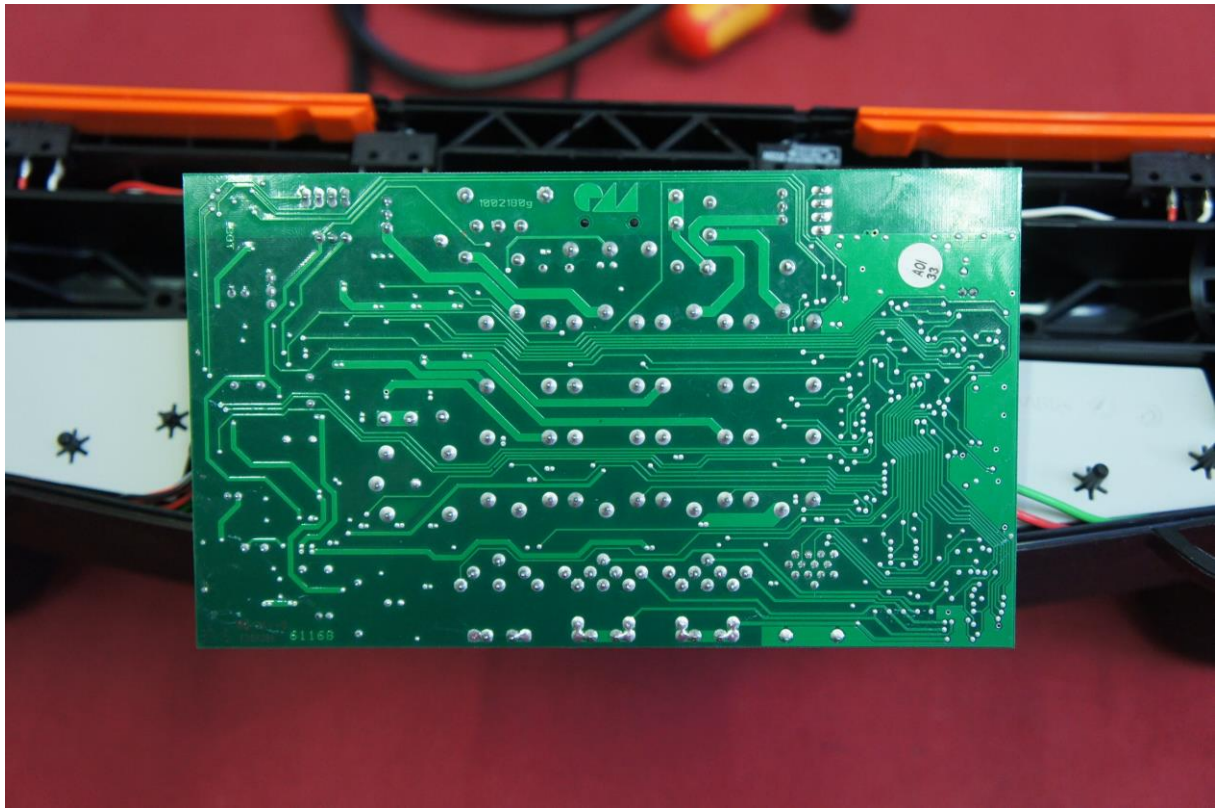
160583-AU01+W01
Annex C



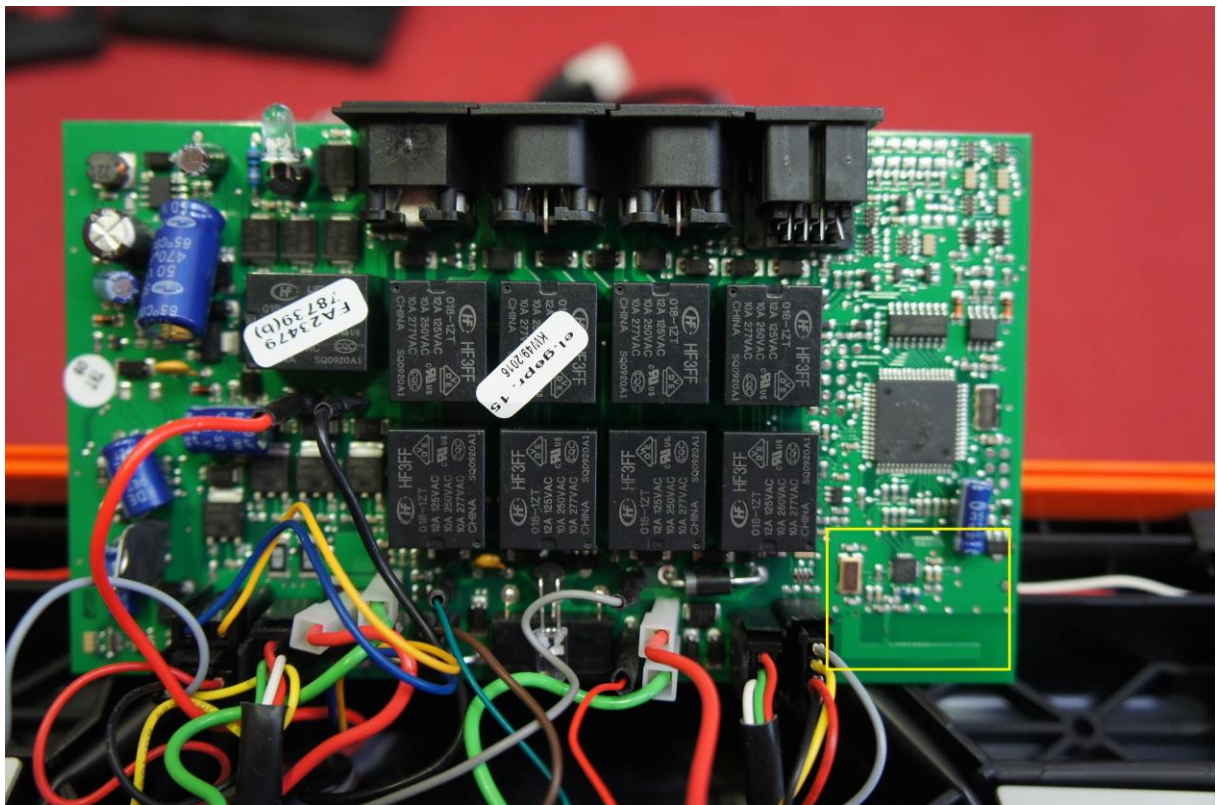
Picture 1: EUT - open housing



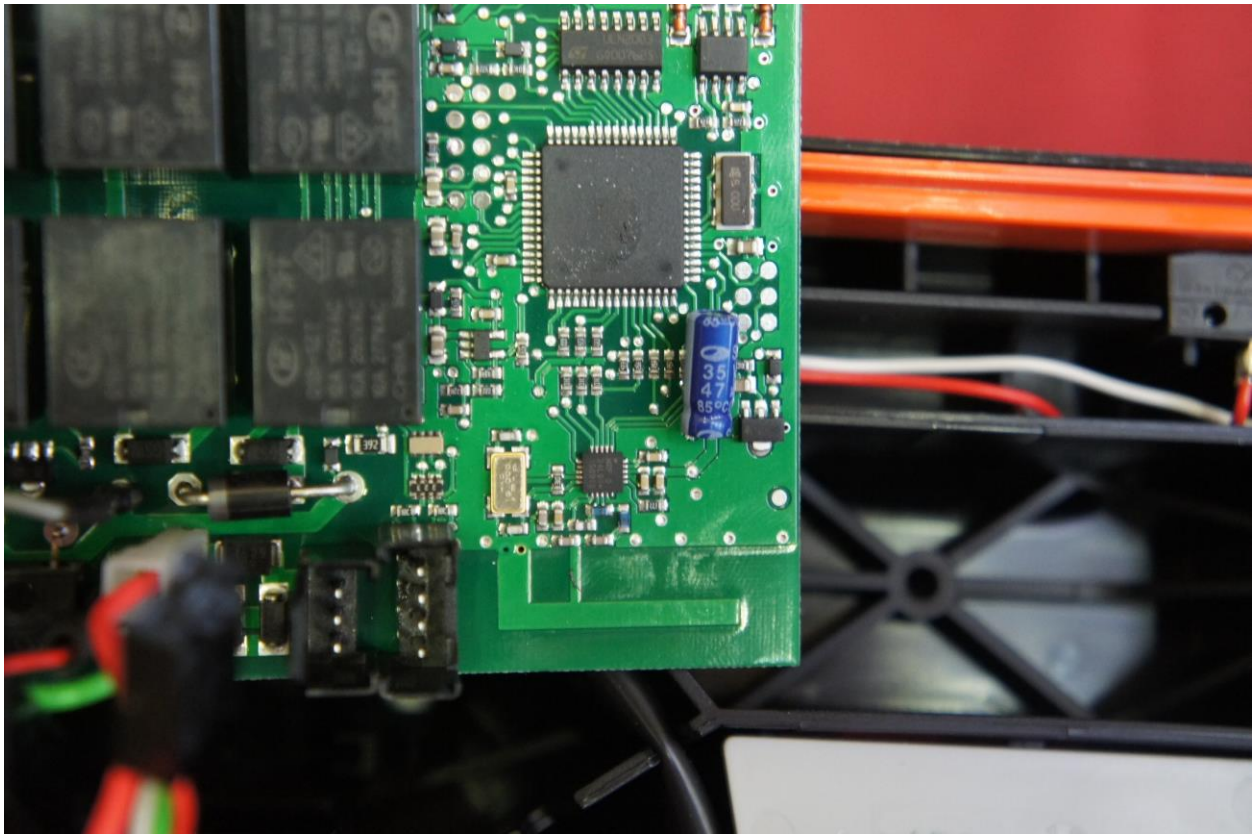
Picture 2: EUT - location main PCB



Picture 3: EUT - main PCB, bottom side



Picture 4: EUT - main PCB, top side, location RF part



Picture 5: EUT - main PCB, top side, RF part