

1 Annex C – documentation

1.1 List of Pictures

Picture 1: EUT - open housing.....2

Picture 2: EUT - PCB top side2

Picture 3: EUT - PCB top side, zoom to RF part.....3

Picture 4: EUT - PCB bottom side3

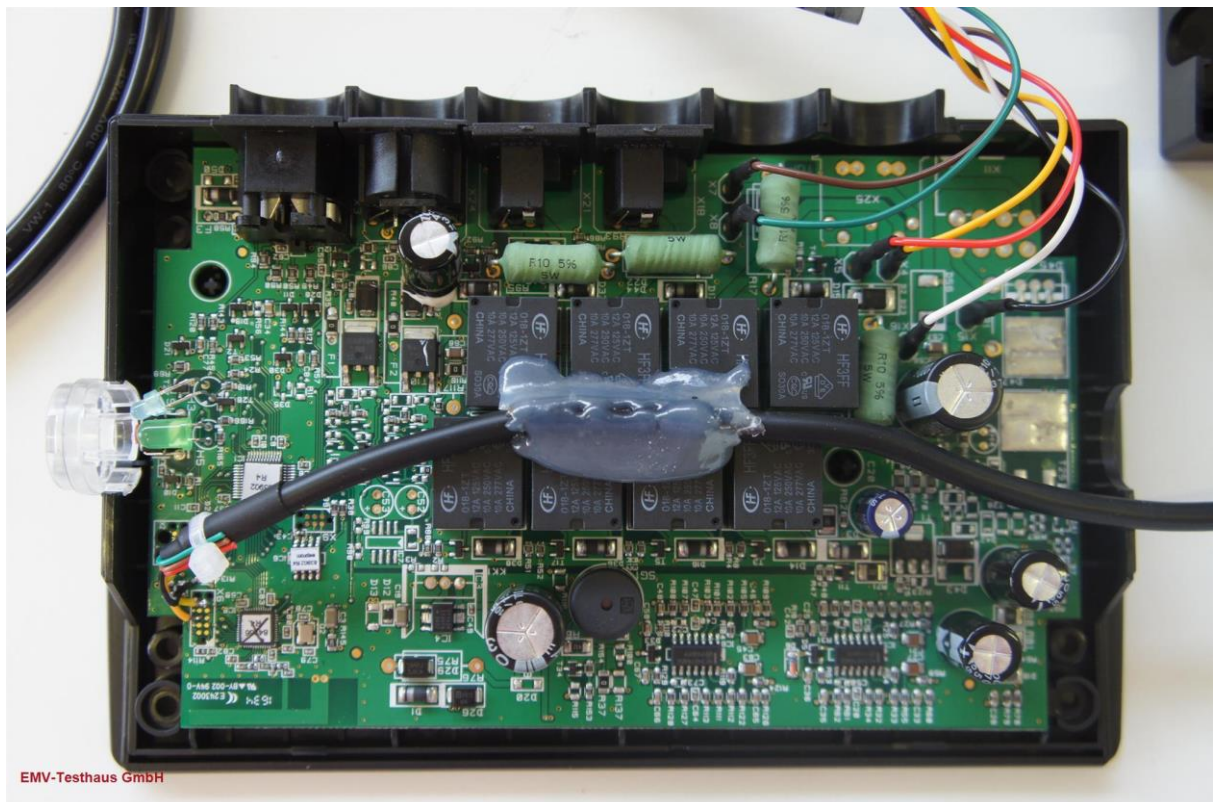


EMV **TESTHAUS** GmbH
Gustav-Hertz-Straße 35
94315 Straubing
Germany

DewertOkin GmbH
control unit
CU170



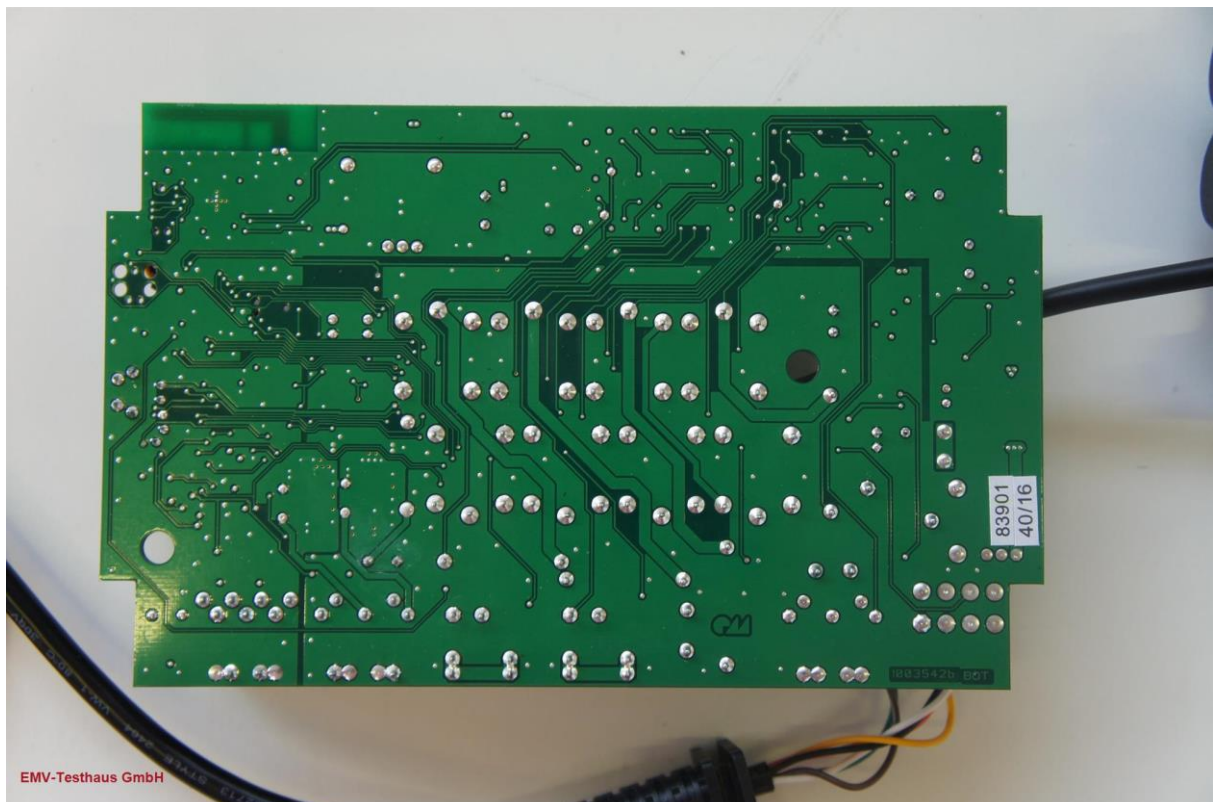
Picture 1: EUT - open housing



Picture 2: EUT - PCB top side



Picture 3: EUT - PCB top side, zoom to RF part



Picture 4: EUT - PCB bottom side