

LIST OF EXHIBITS

	DESCRIPTION	EXHIBITS	REFERENCE
I.	Identification label Information & General Information	1 1A	2.1033 (c) 11 & 2.925
	1. Production Plans		2.1031
	2. Application References		2.1061
	3. Data submittal Procedure		
	4. Similar Certified Transmitter		
II.	Certification Data	2	
III.	External Photographs	3	2.1033 (c) 12
IV.	Block Diagrams (Circuit Diagrams)	4	2.1033 (c) 10
V.	Schematic Diagrams	5	2.1033 (c) 10
VI.	Test Report	6	
	1. Data Index	6	
	2. RF Output Data	6A	2.1046
	3. Modulation Characteristics		2.1047
	A. Audio Response & Low Pass Filter Response	N/A	data only
	B. Modulation Limiting	N/A	data only
	4. Occupied Bandwidth	6E	2.1049
	5. Conducted Spurious Emissions	6F	2.1051
	6. Radiated Spurious Emissions	6G	2.1053
	7. Frequency Stability (Temperature & Supply Voltage)	6H	21055
VII.	Test Set-up Procedures	7	2.1041
VIII.	Instruction Manual	8	2.1033 (c) 3
IX.	Internal Photographs	9	2.1033 (c) 12
X.	Part List and Tune Up Procedures	10	2.1033 (c) 9
XI.	RF Exposure Information	11	2.1093
XII.	Operational Description	12	2.1033 (c) 1, 2, 4, 5, 6, 7, 2.1033 (c) 8, 13
	1. Technical Characteristics 1 - 5		
	2. Application		
XIII.	Cover Letter	13	

EXHIBIT 1. IDENTIFICATION LABEL ----- 47 CFR. 2.1033(C) 11

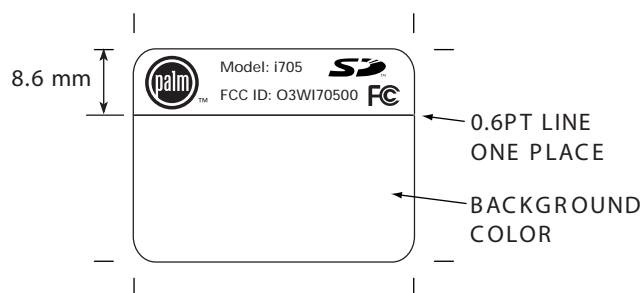
LOCATION

Back side of the transceiver unit chassis.

Enlarged view of FCC Identifier Label on the following page.

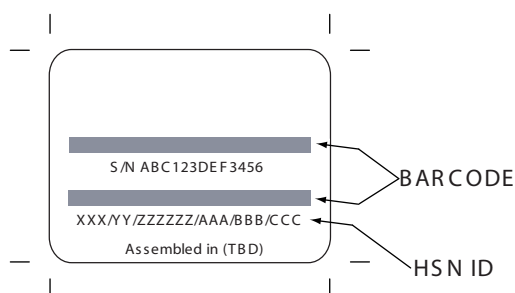
NOTES: UNLESS OTHERWISE SPECIFIED

1. TEXT/GRAPHICS COLOR: BLACK
2. LABEL BACKGROUND COLOR: SAND MICA
3. REFER TO PALM, INC. 580-2496 FOR LABEL CONSTRUCTION DETAIL
4. THE THERMAL TRANSFER PRINTED ARTWORK, WHICH IS DEPICTED BELOW, IS APPROXIMATE, EXACT LAYOUT TBD BY PALM, INC. MFR.
5. DO NOT SCALE LOGOS OR SYMBOLS



Press Printed Artwork (100%)

REFERENCE DIMENSIONS:
W:37.2 MM X H:28.2 MM
RADIUS = 2.5R

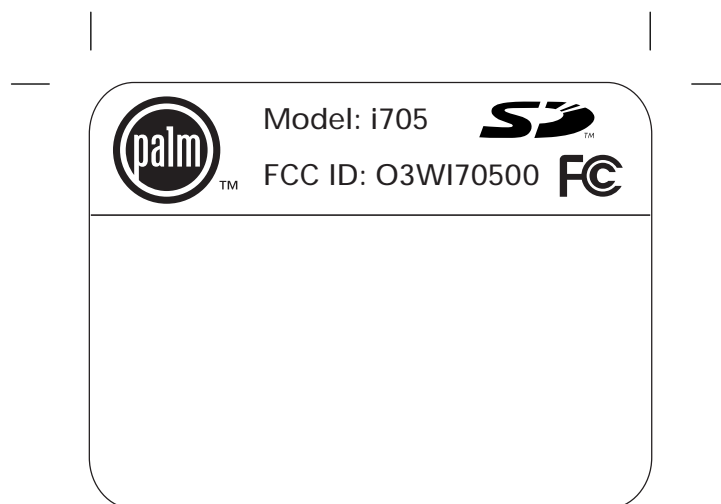


Thermal Transfer
Printed Artwork (100%)

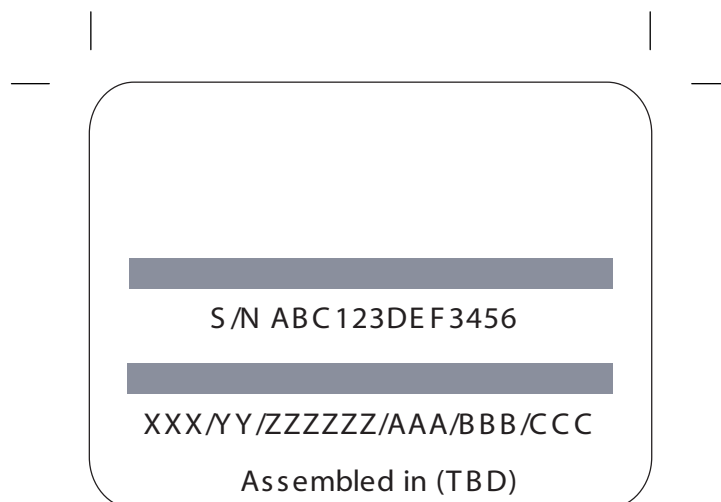
This drawing and the data disclosed herein and herewith are to be considered proprietary, and is not to be reproduced, used or disclosed in whole or in part without the permission of Palm, Inc.

Revisions:

00	PRELIMINARY RELEASE	
01	MSN NUMBER CHANGED TO 9 DIGITS.	
02	ADDED S/N TO SERIAL NUMBER	10.16.00
03	ADDED NOTES	11.03.00
04	REMOVE CANADA 119. ADDED HSN.	04.10.01
05	REMOVED HSN. ADDED PAGE TWO	04.24.01
06	CONSOLIDATED PAGES 1 AND 2	05.06.01
07	ADDED FFC ID & MODEL NUMBER	05.24.01
08	ADDED NOTES	06.03.01



Press Printed Artwork (200%)



Thermal Transfer
Printed Artwork (200%)

PALM, INC 5400 BAYFRONT, SANTA CLARA, CA 95052

A/W, LABEL, AGENCY, SKY

Sheet: 1 of 2

DOC #: 400-2496

Rev. 10

Date: June 03, 2001

By: S. Shiozaki & J.A. Kuck

Exhibit 1A. General Information --- 47 CFR 2.1031 and 2.1061.

1A.1. Production Plans -- Pursuant 47 CFR 2.1031

Quantity production is planned.

1A.2. Application References -- Pursuant 47 CFR 2.1061

Reference is made to the following Palm "Application References"

1. Land Mobile Products under Part 90 and their application

1A.3. Data Submittal Procedure

Data located in Exhibit 6 is supplied in accordance with Part 2, Sub-part J and Part 90, Sub-parts I and J of the Commissions' rules and will be submitted electronically.

1A.4. Similar, currently Type Accepted Transmitter

The Palm VII FCC ID: O3W3C80500, would be the closest similar transmitter in function although significantly different designs.