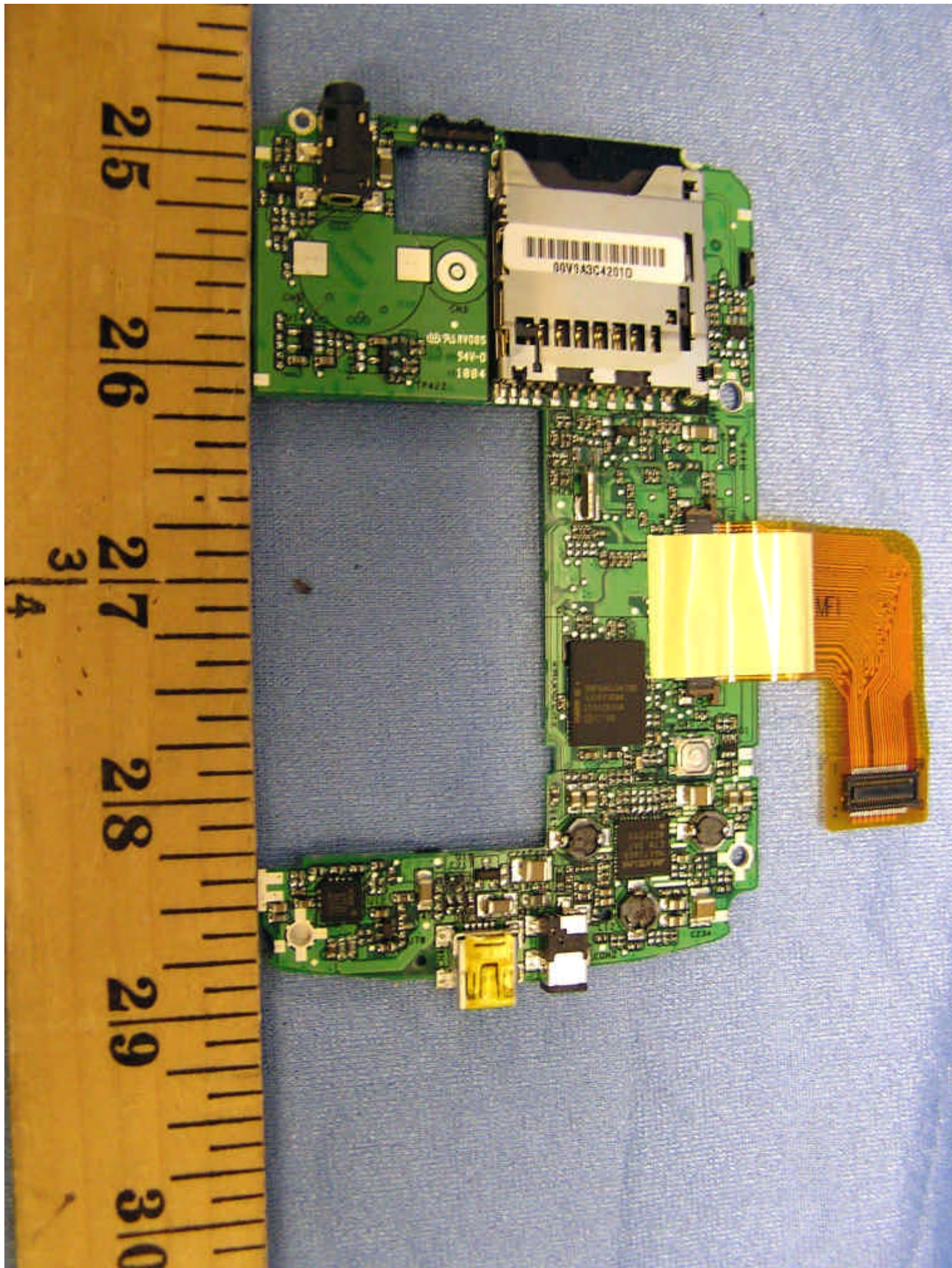
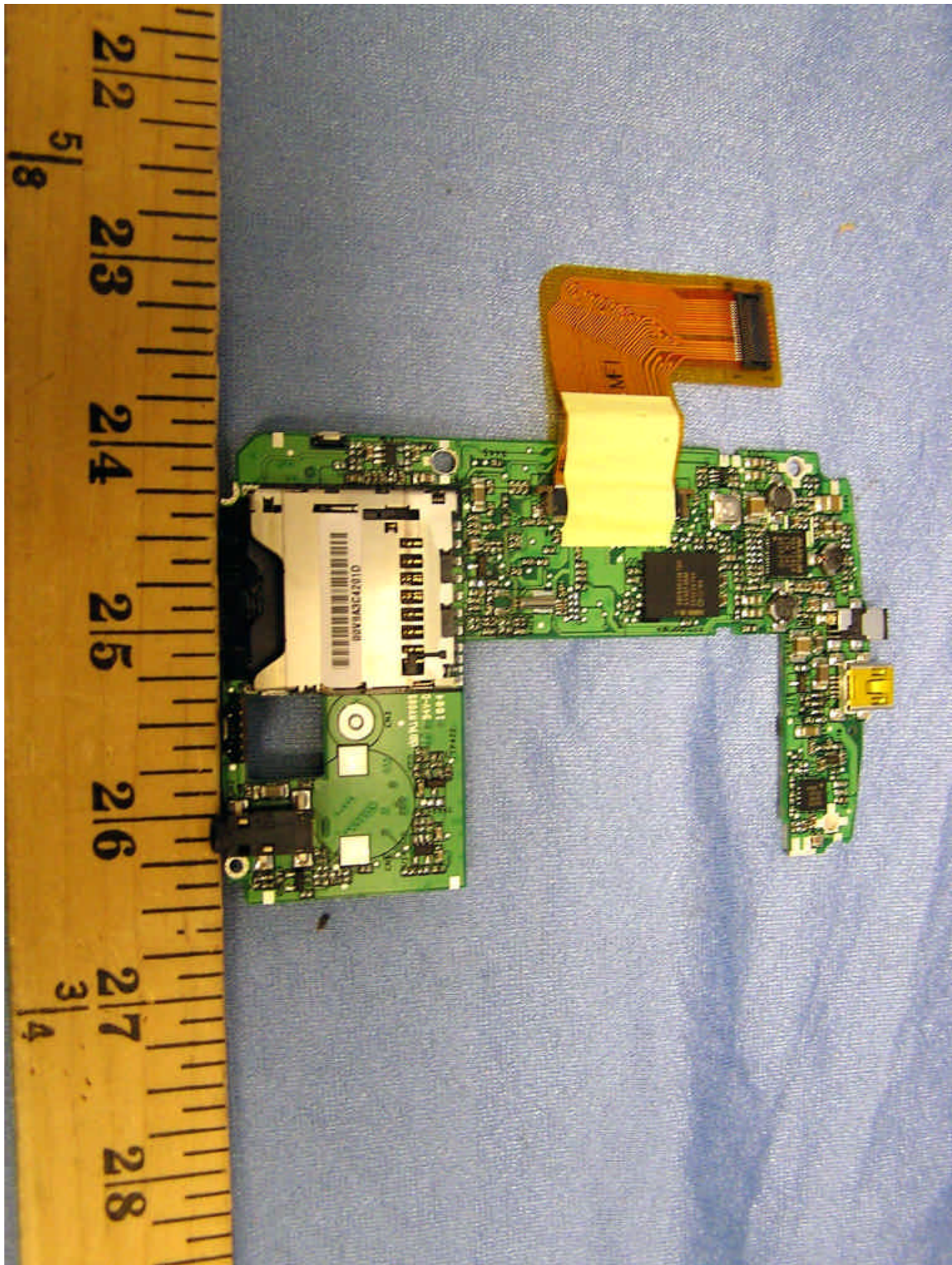
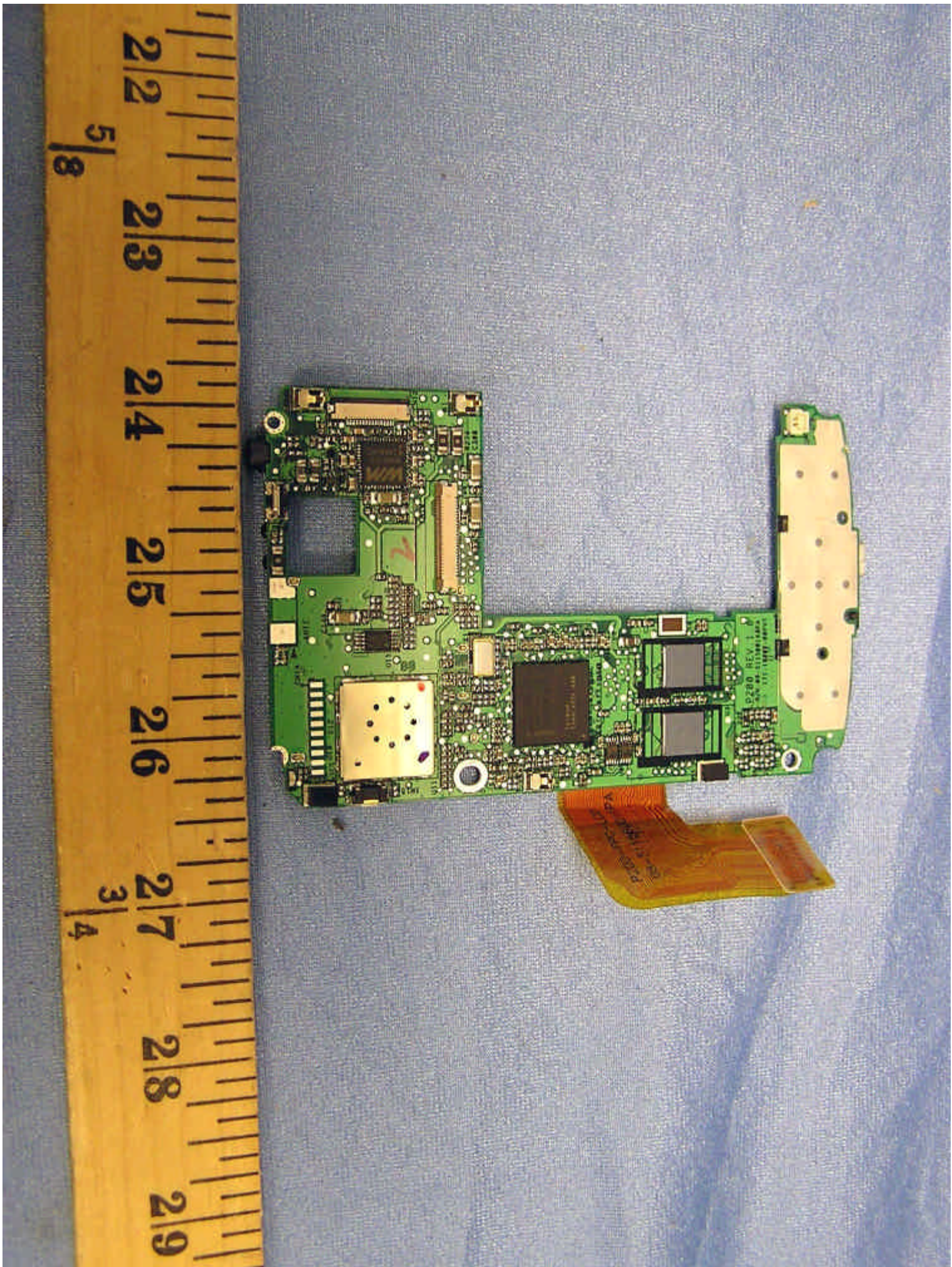


2/6 2/7 2/8 2/9 3/0 3/1  
3/4



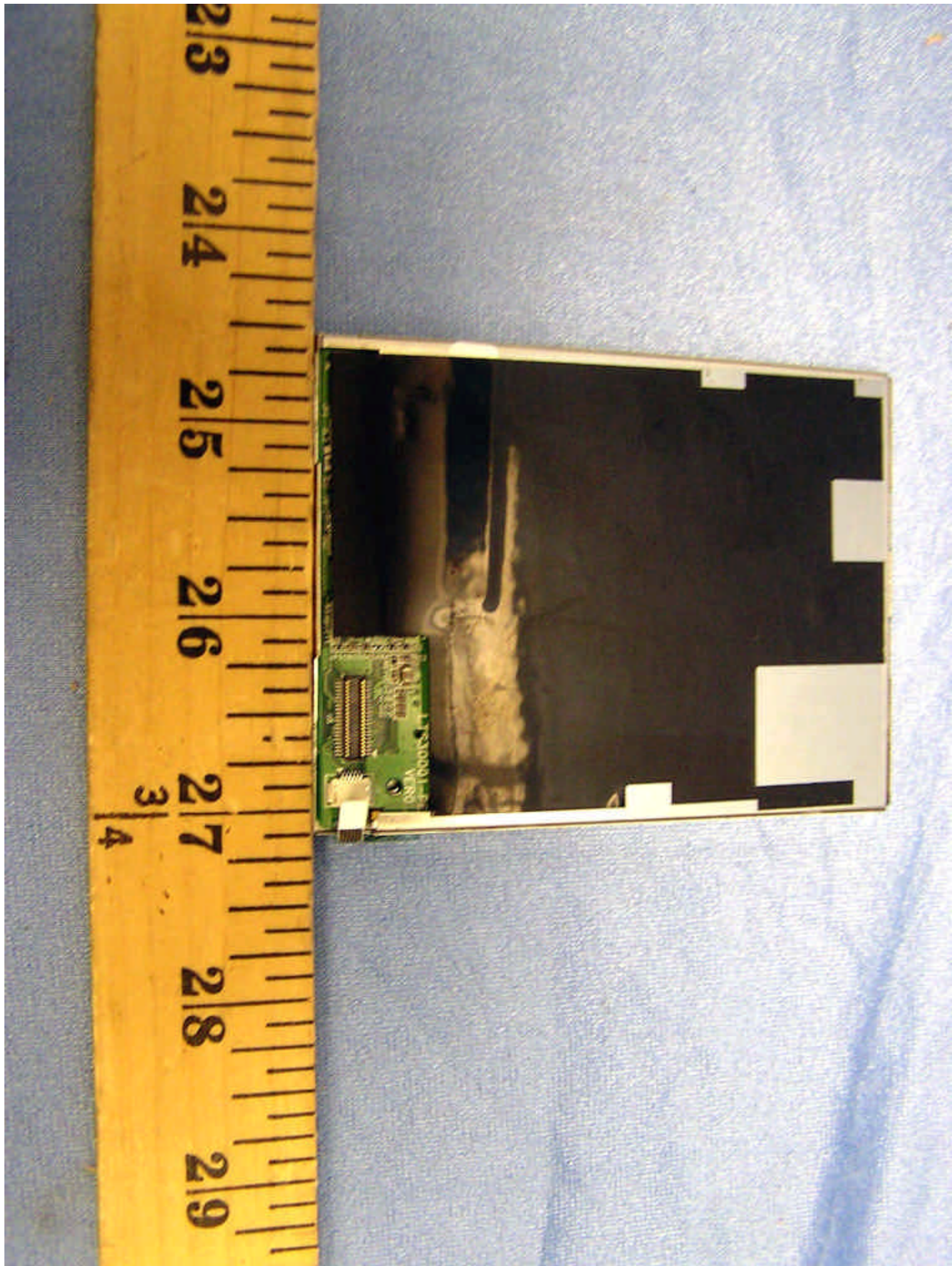














Please respect the environment! Before throwing any batteries away, consult your distributor who may be able to take them back for specific recycling.



Li-Ion

Rechargeable Battery 3.7V Li-Ion  
Manufactured by SAMSUNG SDI CO., LTD.

Cell Made in Korea

920mAh

Pack Assembled in China **GA1X22022**

**CAUTION:** RISK OF FIRE, EXPLOSION AND BURNS. DO NOT DISASSEMBLE, PUNCTURE, CRUSH, HEAT ABOVE 80°C (160°F), OR INCINERATE. CHARGE ONLY WITH THE SPECIFIED CHARGERS WHICH WERE PACKAGED WITH THE PRODUCT.

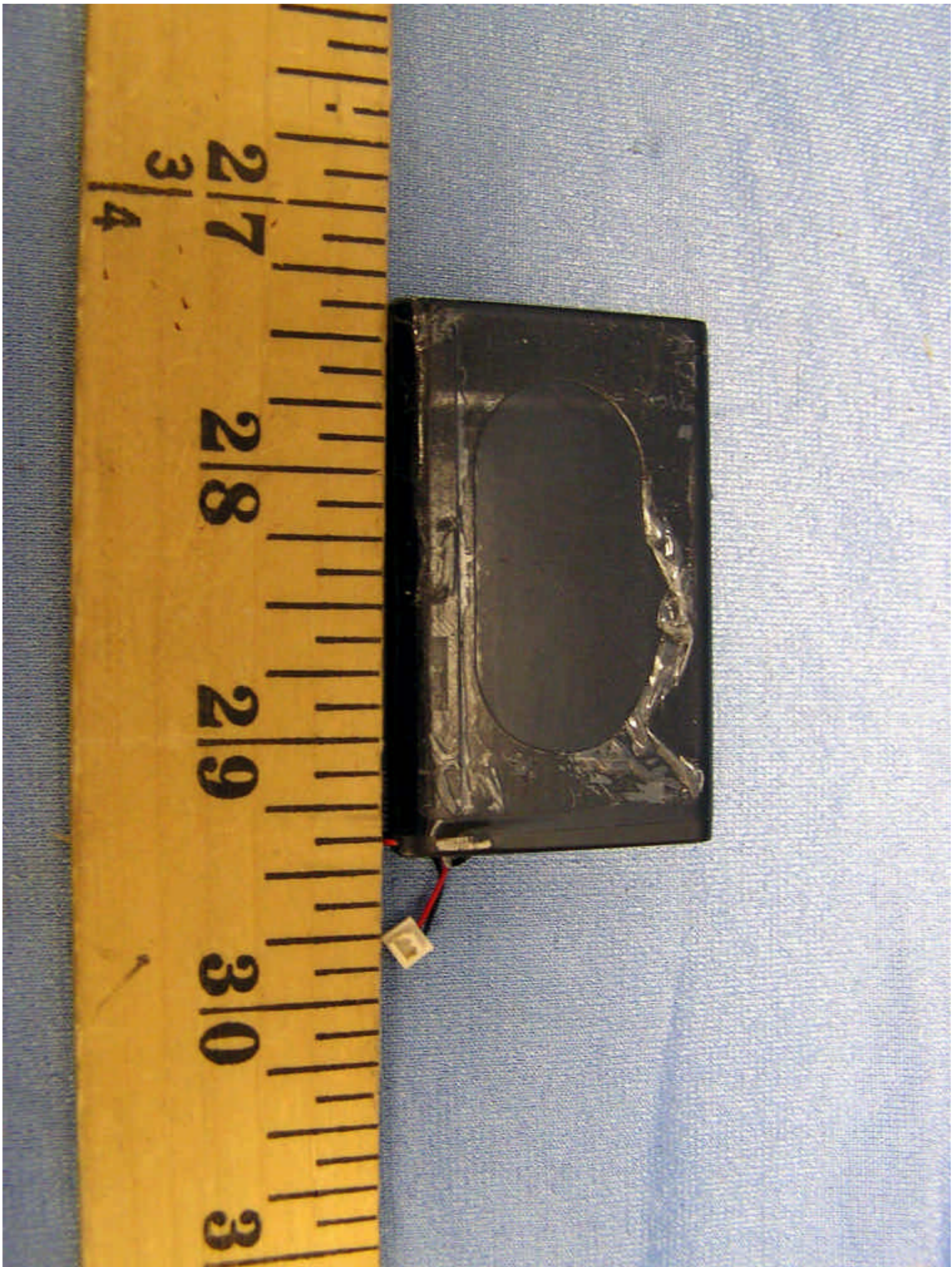
2/6

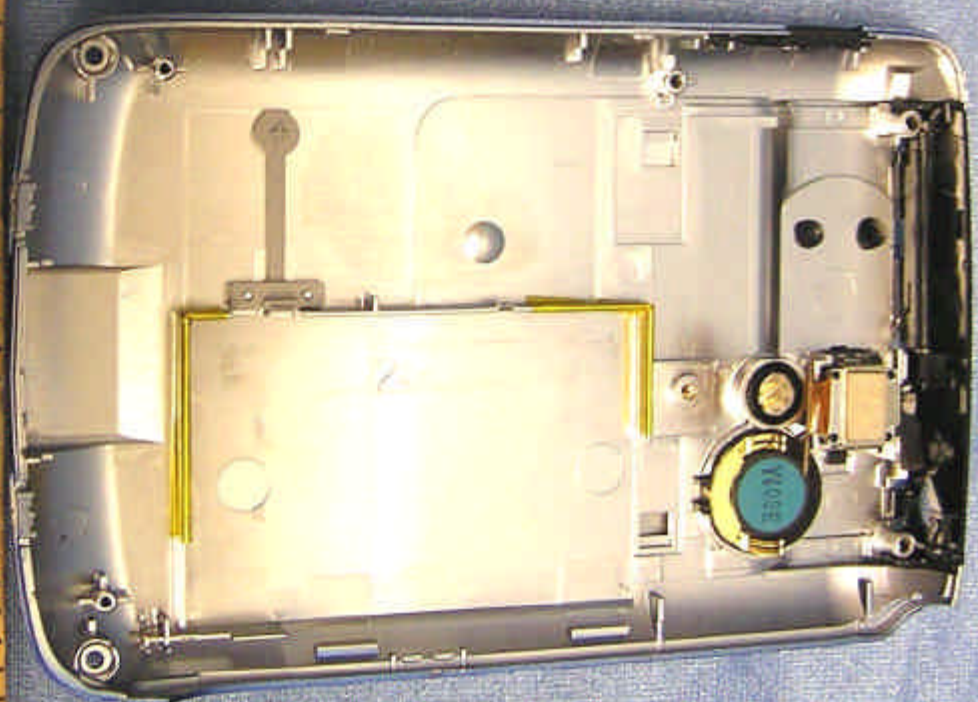
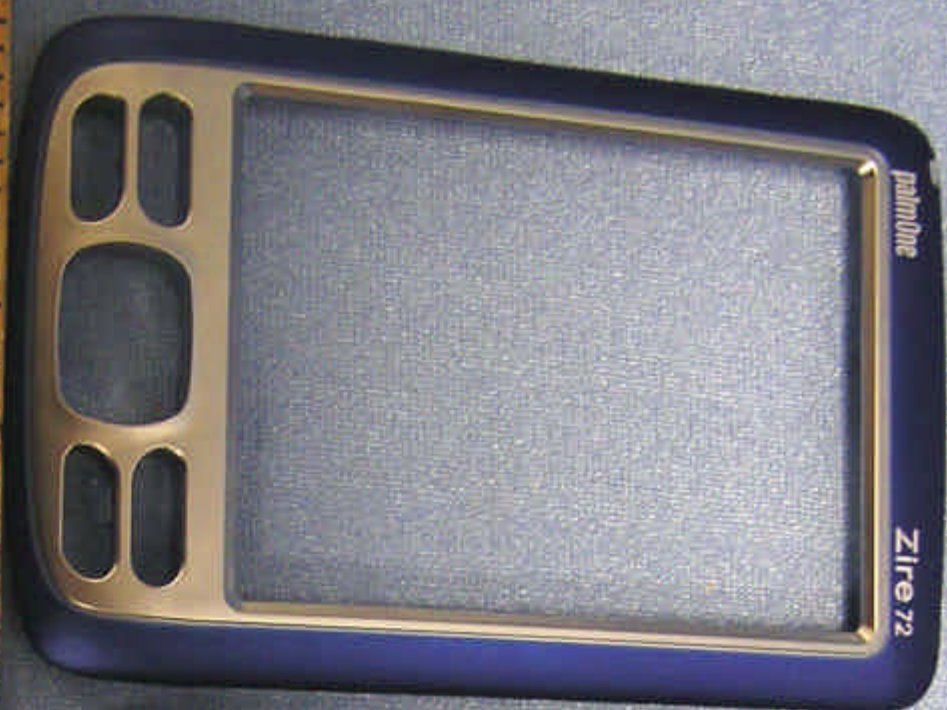
2/7

2/8

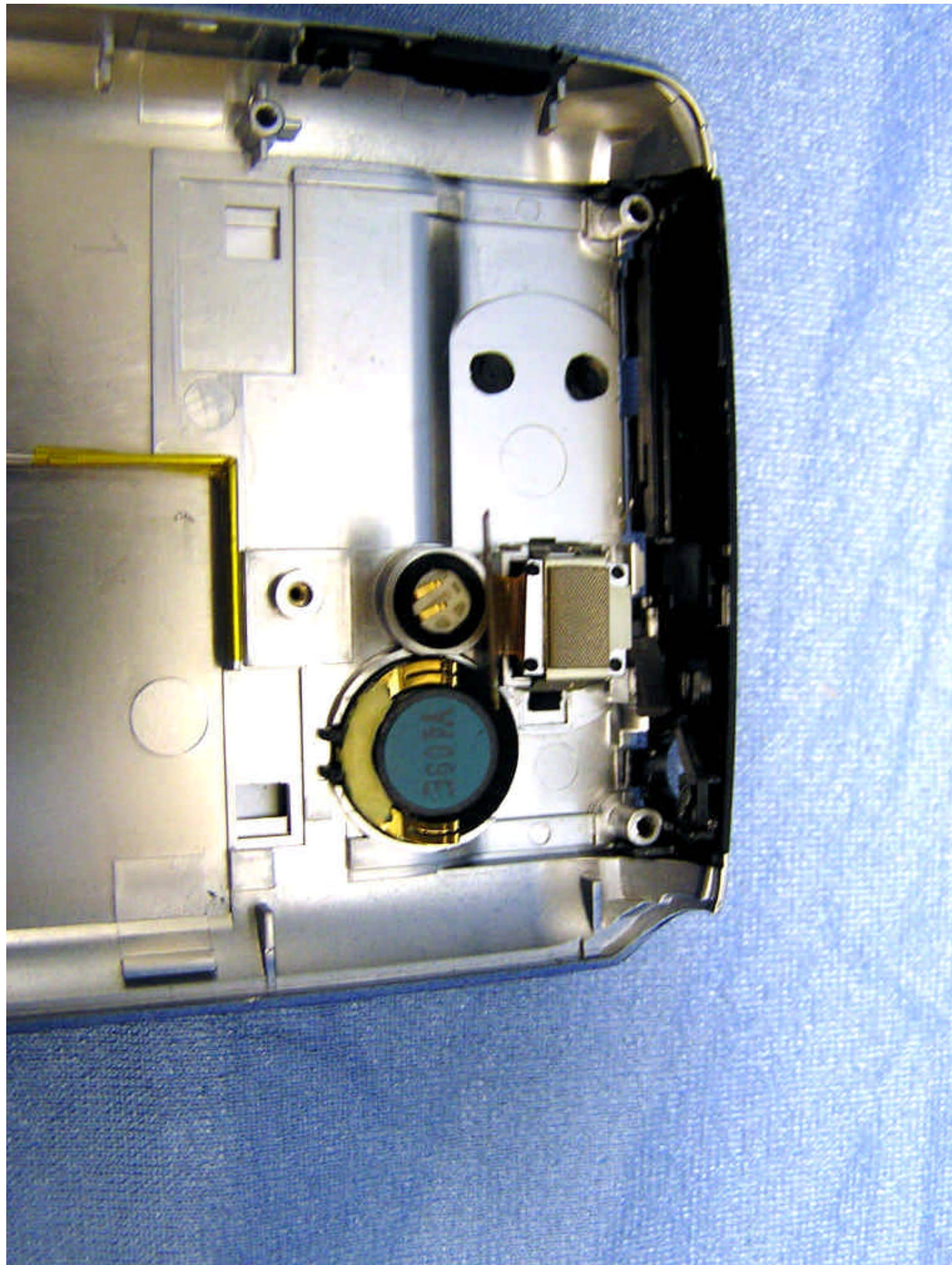
2/9

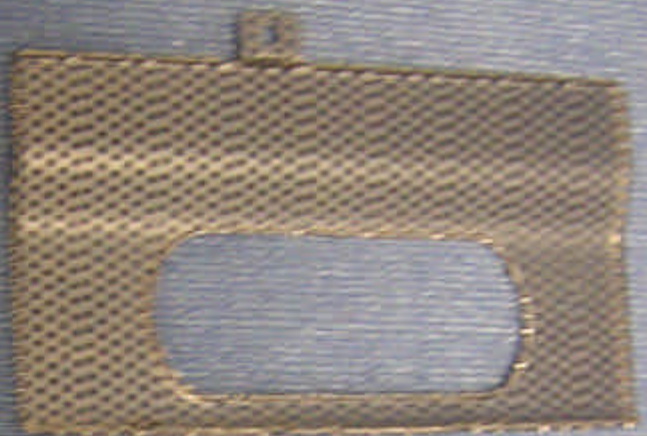
3/4













2 2/3

2 2/4

2 2/5

2 2/6

2 2/7

3 3/4

