

Figure 1
General Appearance (Cover Removed)



Figure 2
Bulb (Front View)

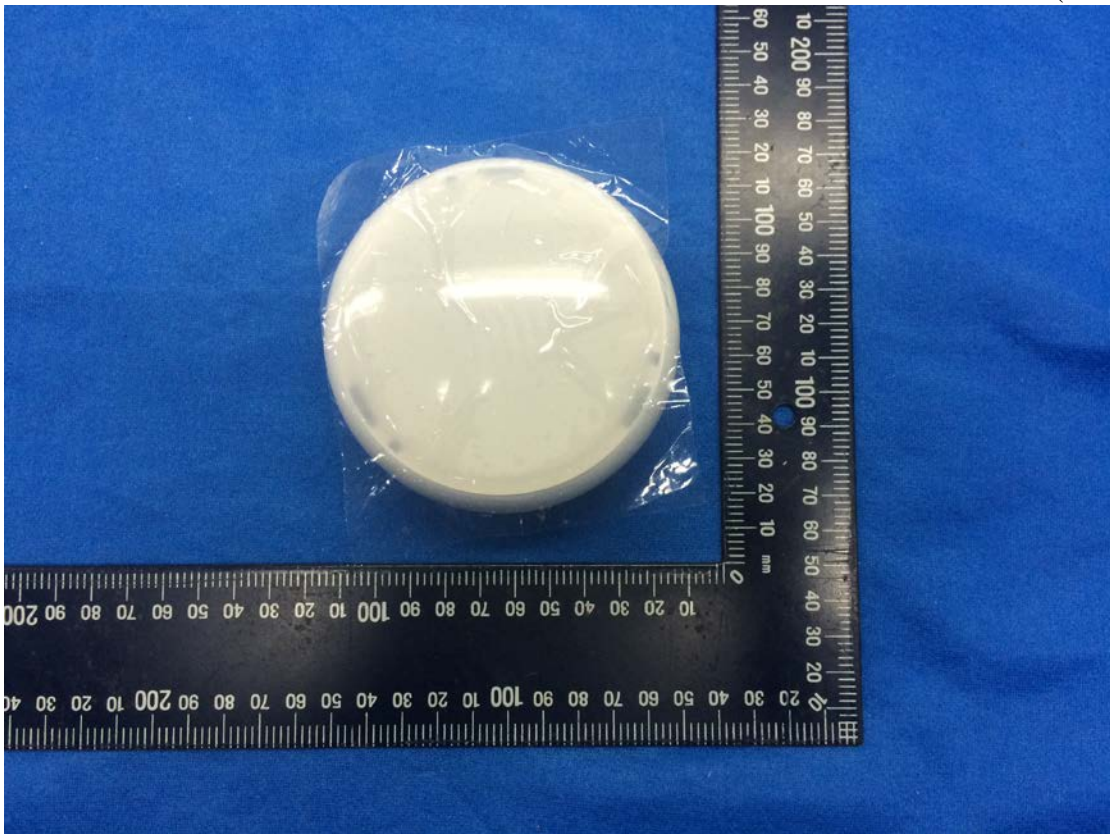


Figure 3
Bulb (Back View)

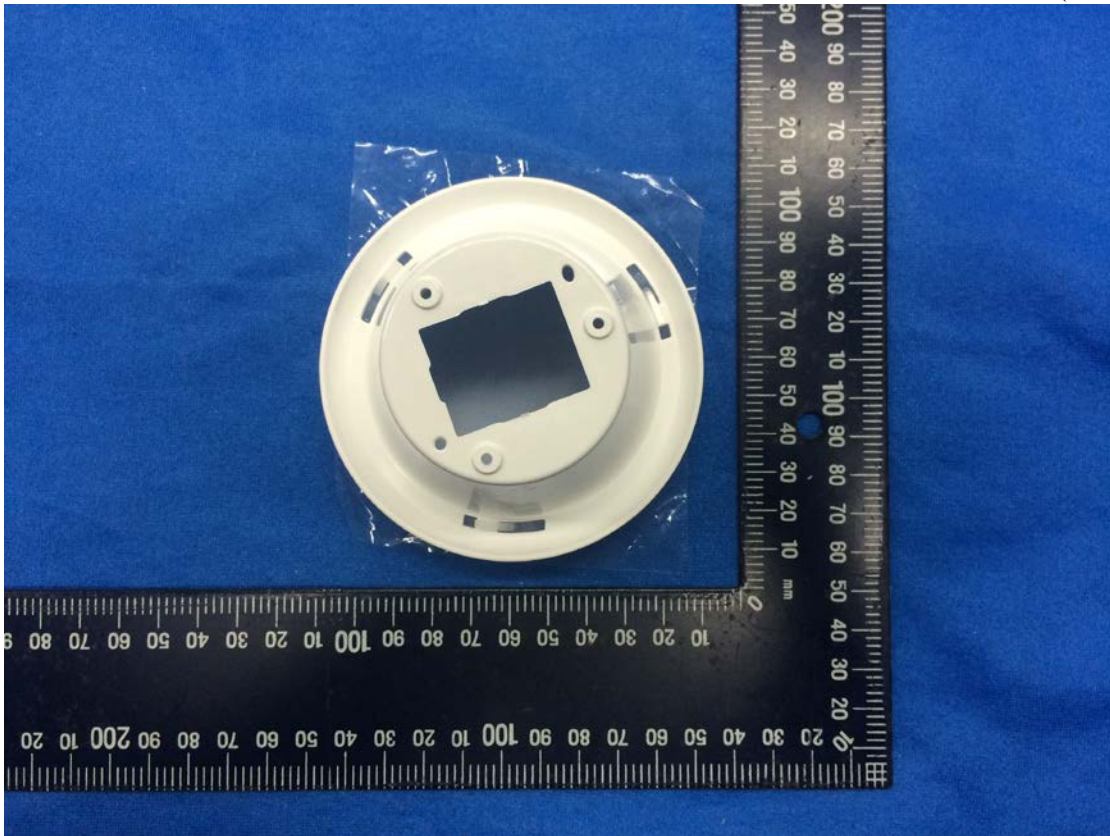


Figure 4
Housing



Figure 5
Screw base (Back View)

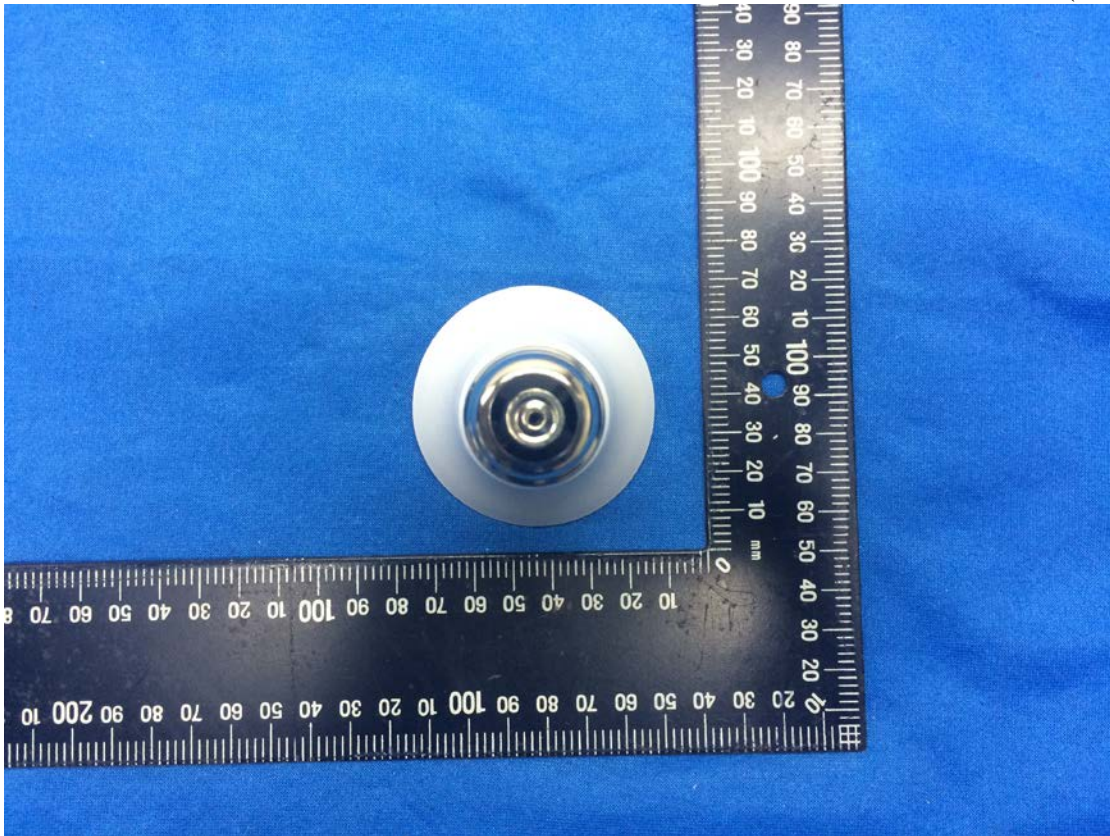


Figure 6
Platform (Front View)

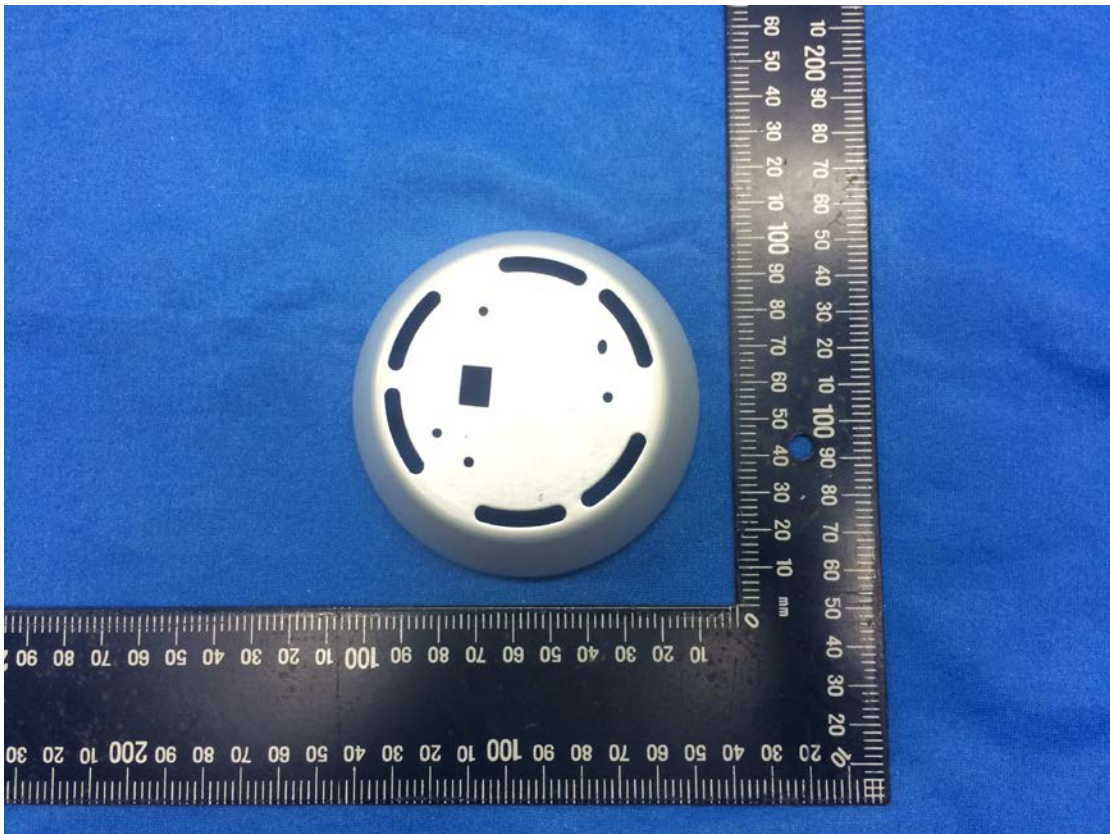


Figure 7
Platform (Back View)

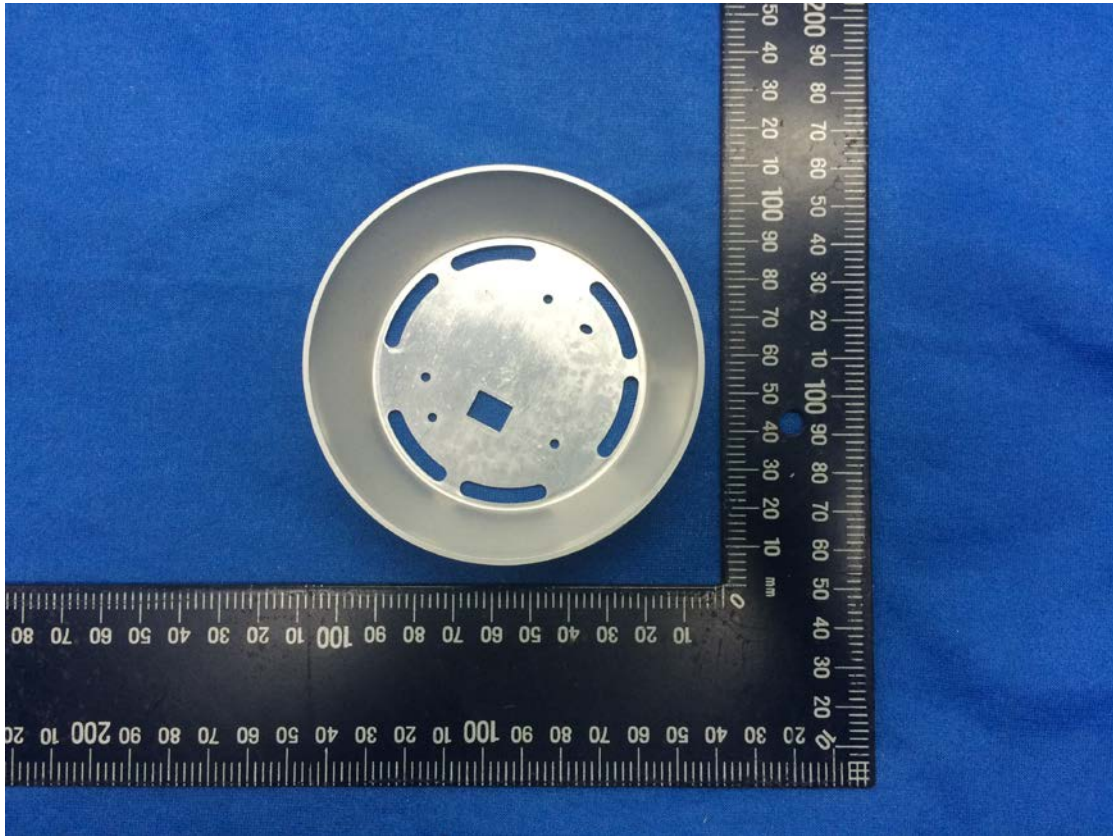


Figure 8
LED Light Board (Component Side)

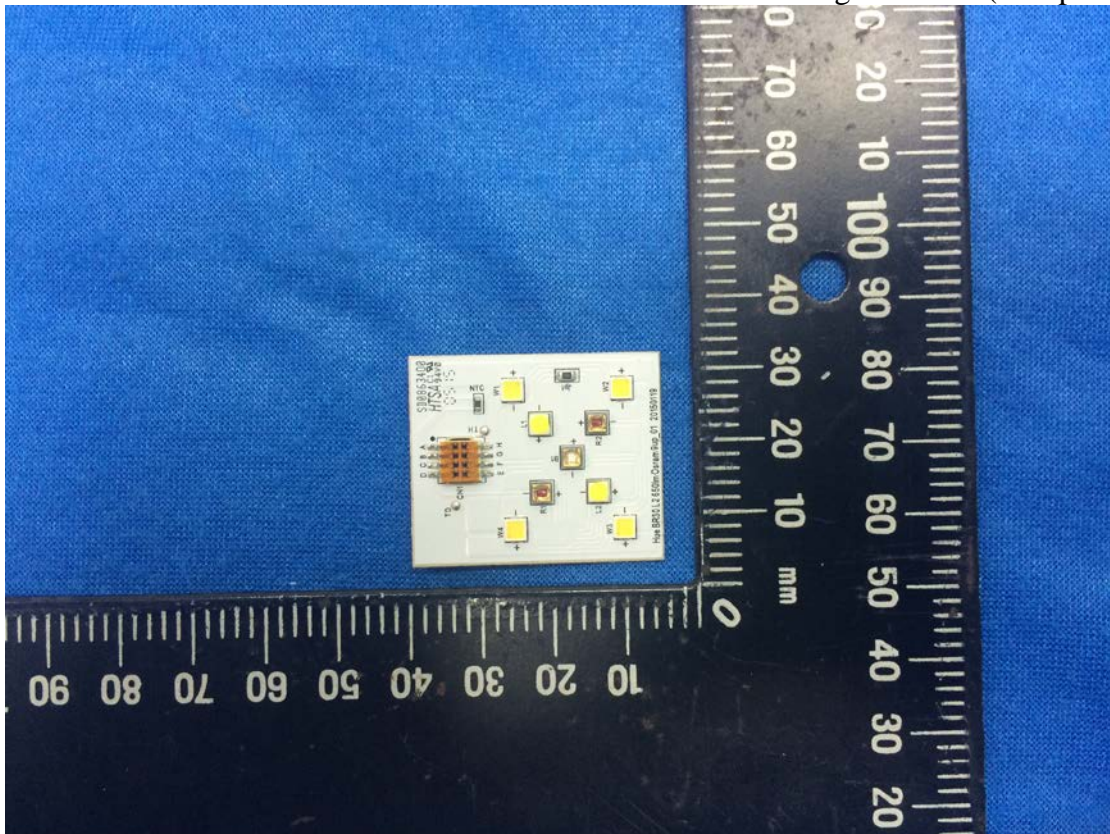


Figure 9
LED Light Board (Solder Side)

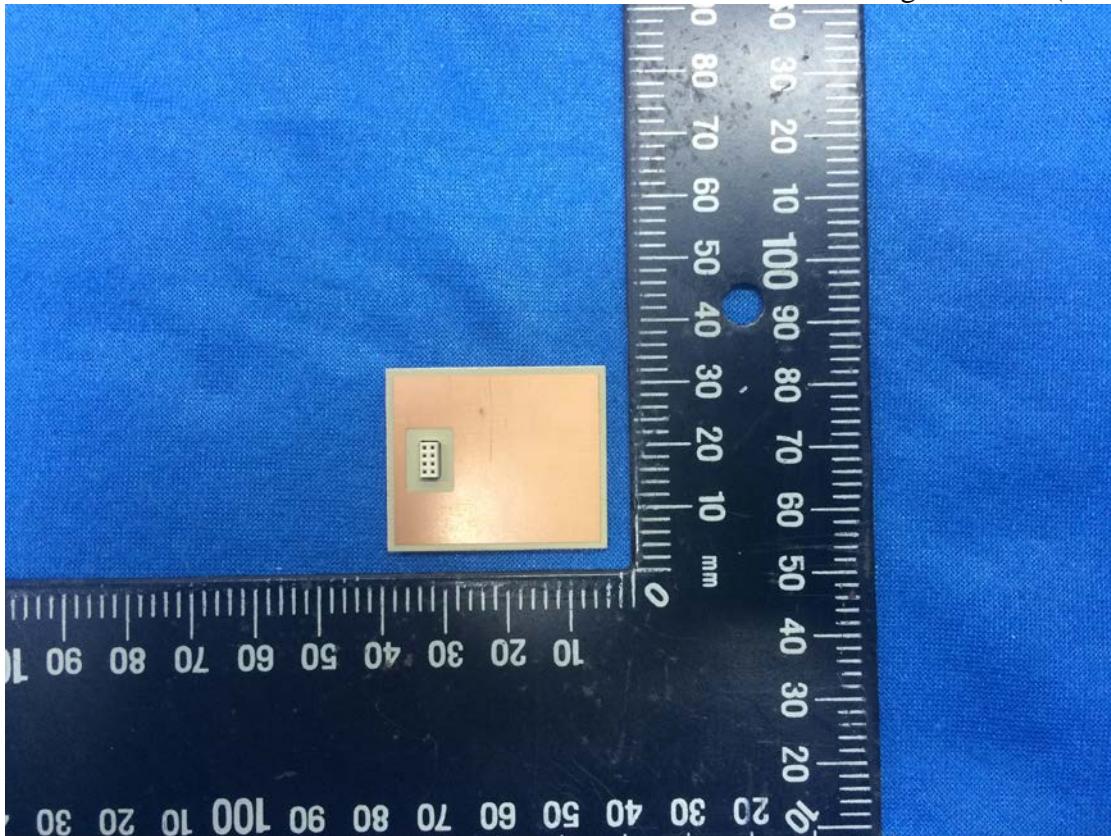


Figure 10
Power Board (Component Side)

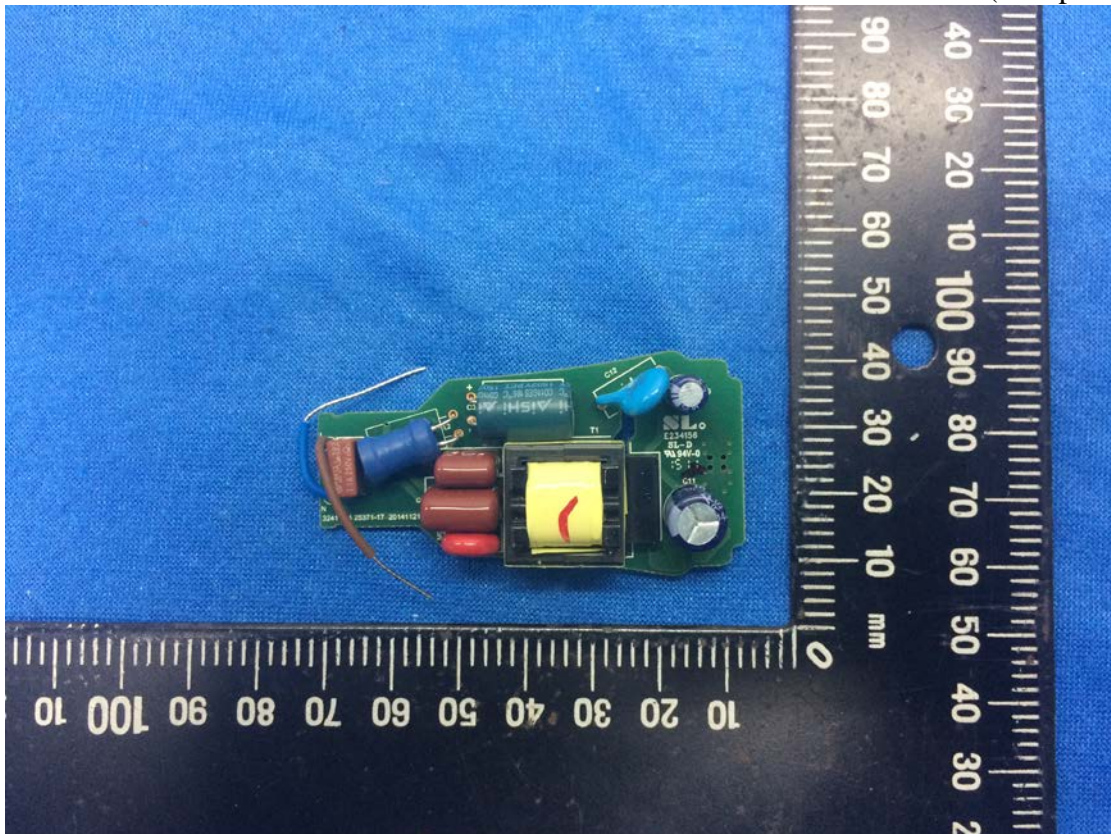


Figure 11
Power Board (Solder Side)

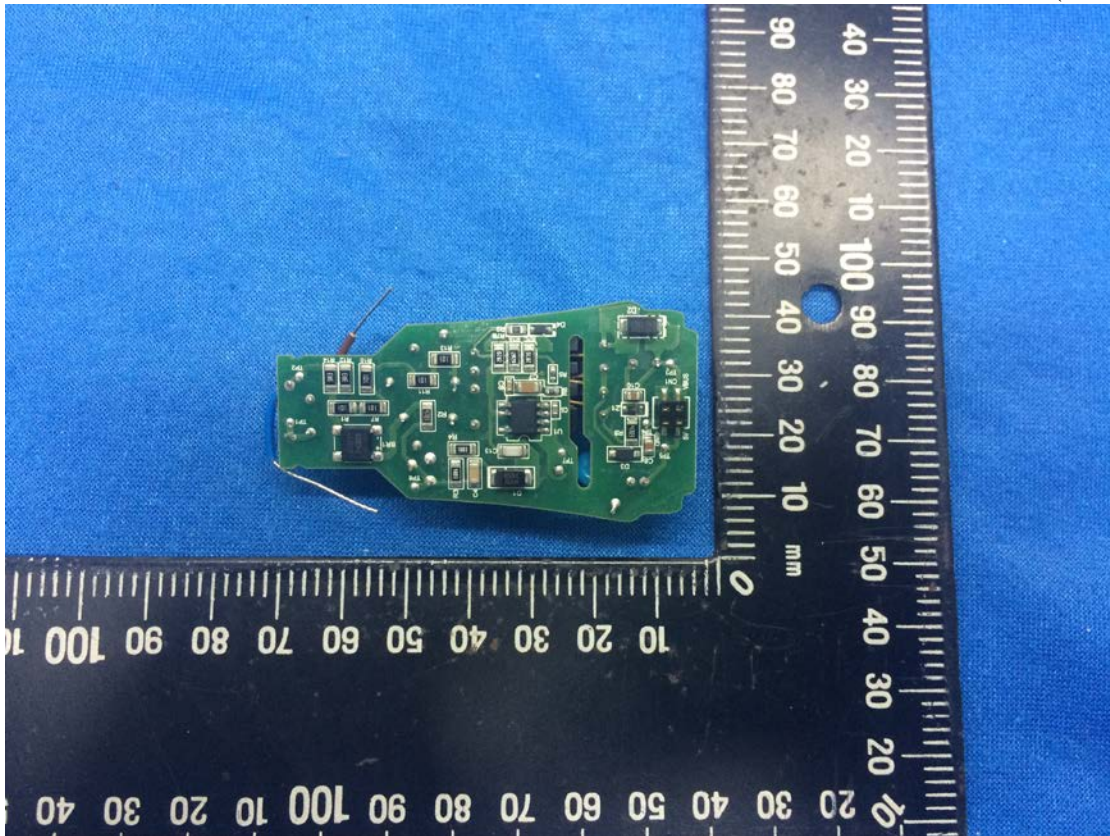


Figure 12
PCB Board (Component Side)

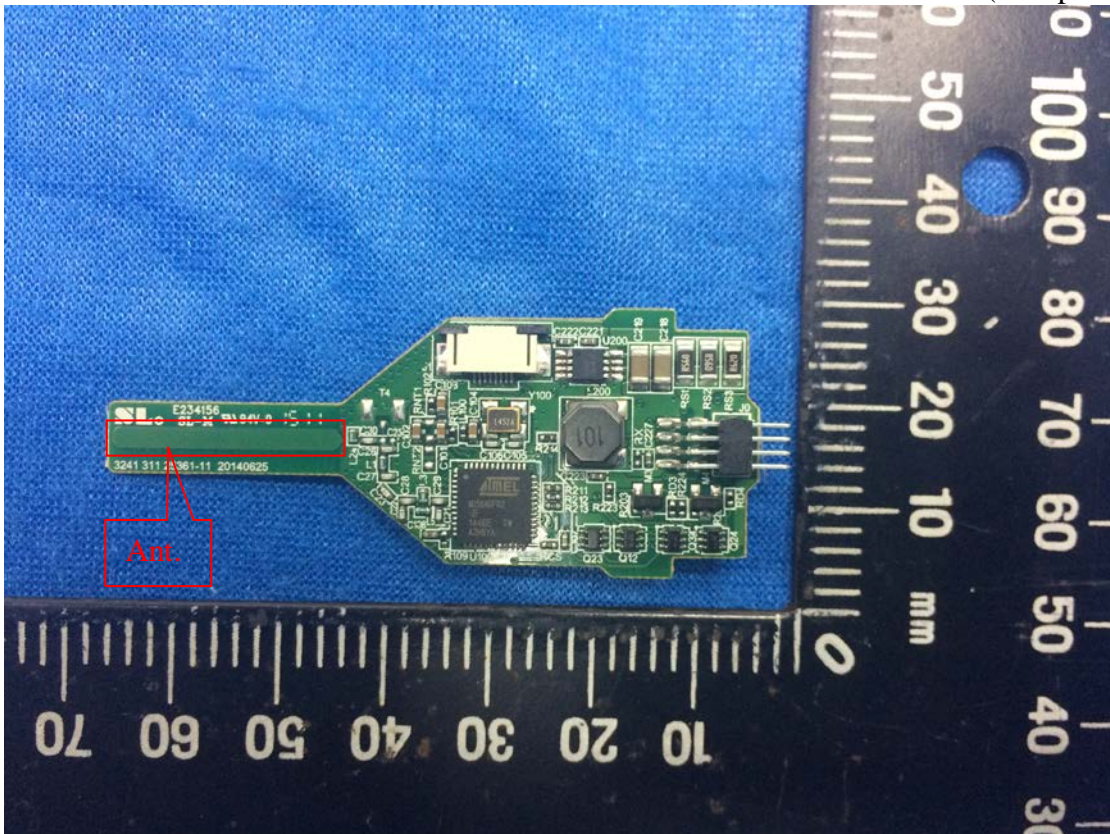


Figure 13
PCB Board (Solder Side)

