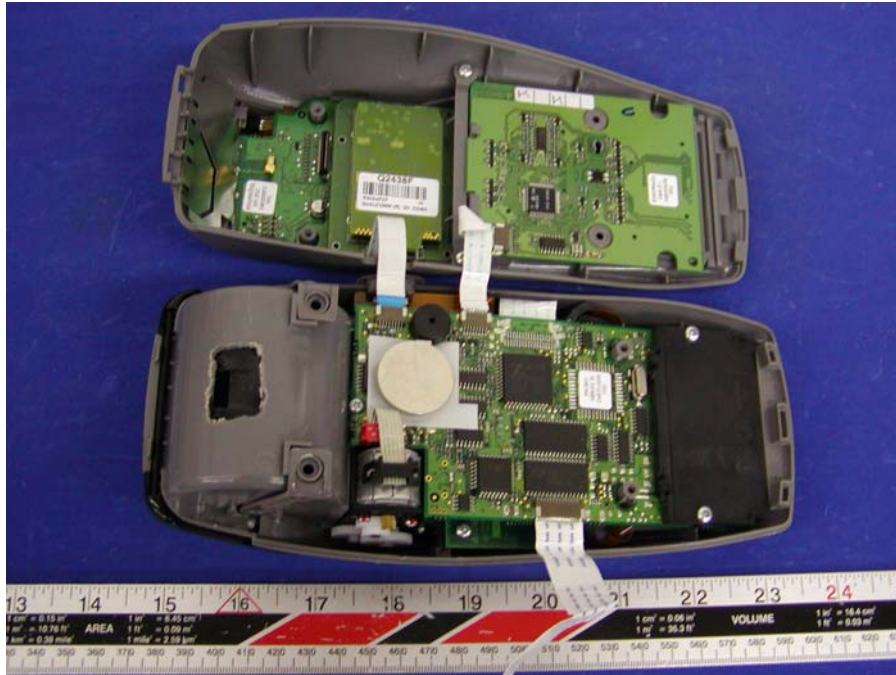
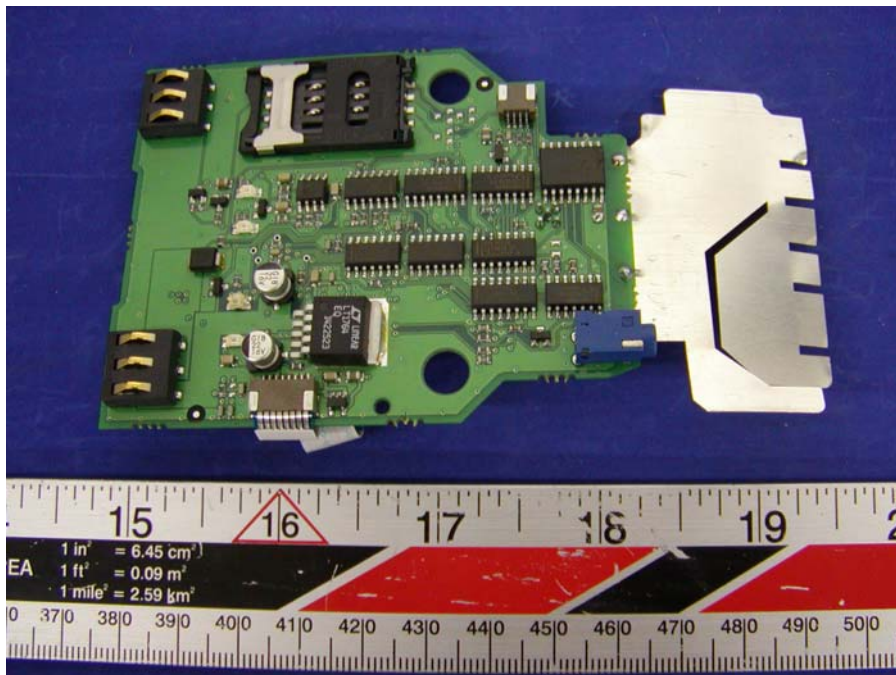


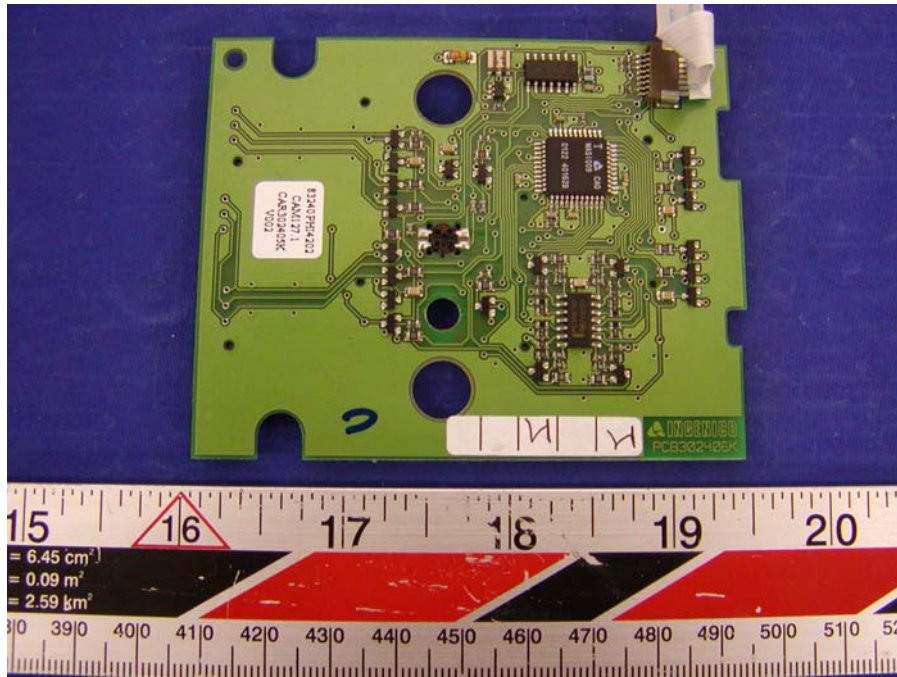
Chassis – Cover off View



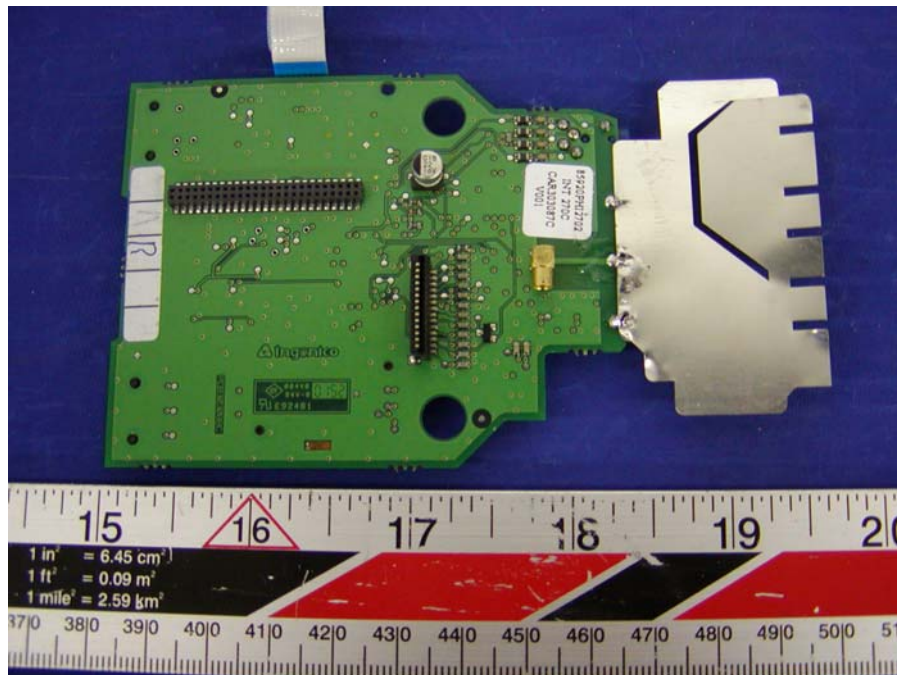
EUT – Component View 1



EUT – Component View 2



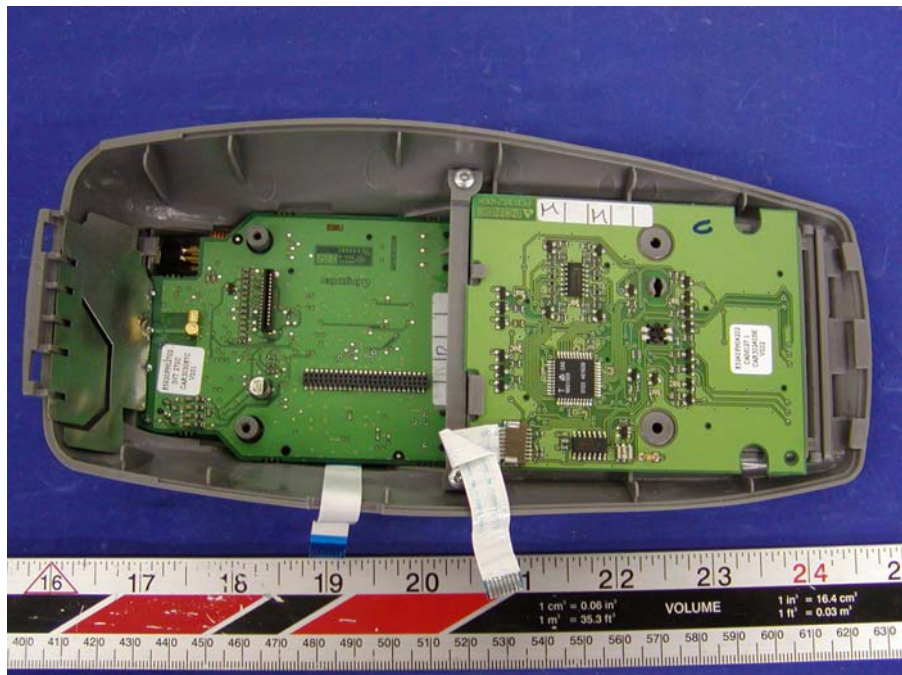
EUT – Solder View



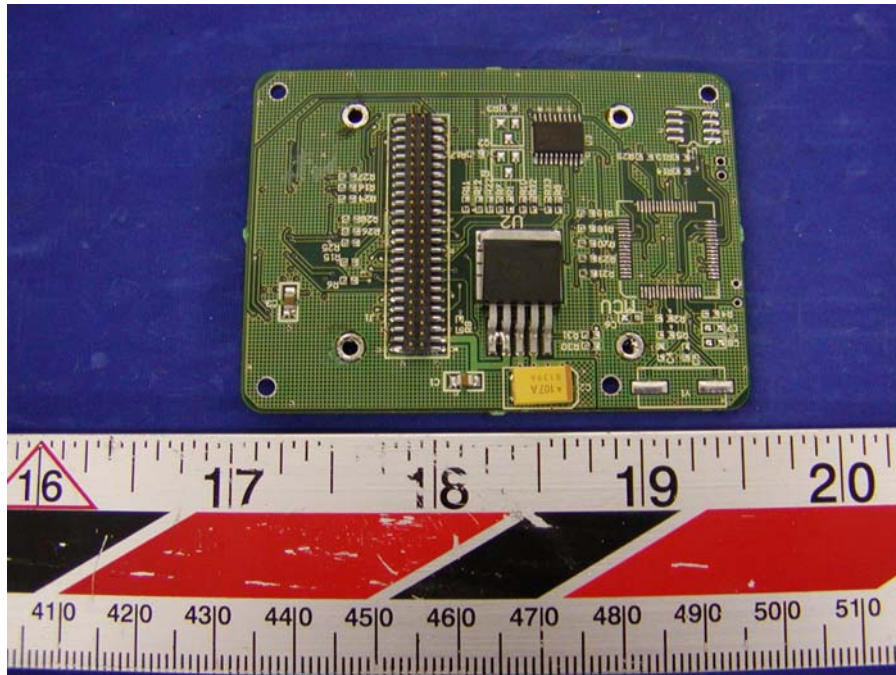
EUT – Solder View with Transceiver



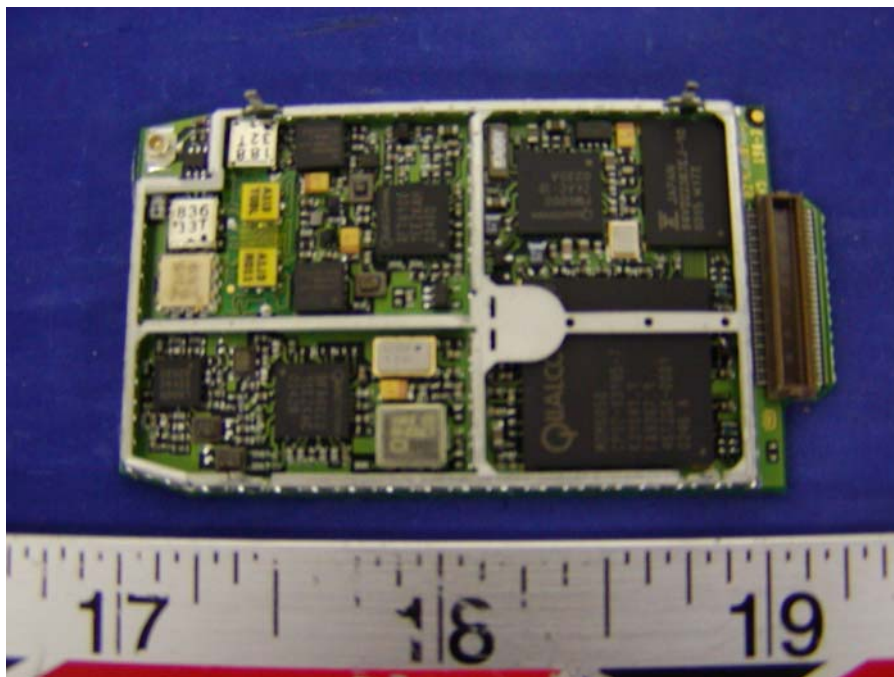
EUT – Solder View without Transceiver



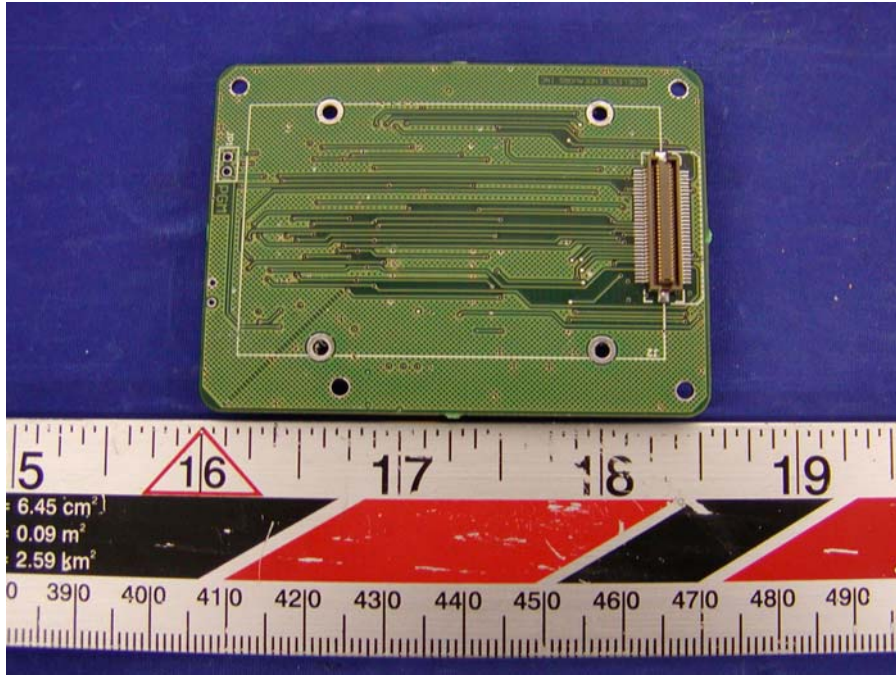
Transceiver – Layer 1 Component View



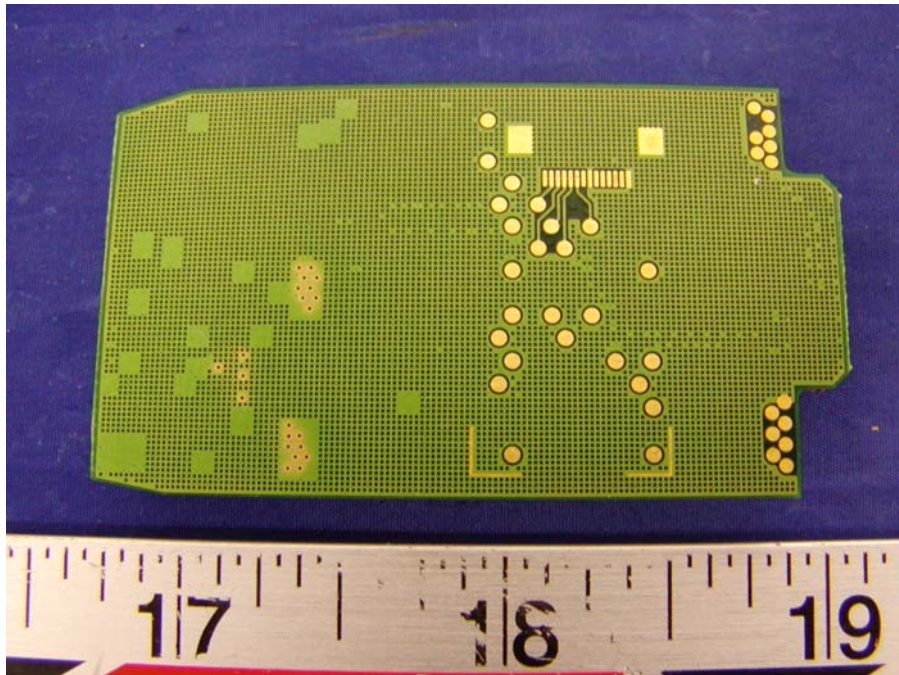
Transceiver – Layer 2 Component View



Transceiver – Layer 1 Solder View



Transceiver – Layer 2 Solder View



Transceiver – Solder View

