










Annex D. Calibration Certificates

Device	Type/Model	Serial Number	Manufacturer	Calibration Certificate
SAR E-Field Probe	SSE2	27/13 EP184	SATIMO	
SAR E-Field Probe	SSE2	17/14 EP224	SATIMO	
IEEE REF Dipole 750 MHz	SID750	14/13 DIP 0G750- 229	SATIMO	
IEEE REF Dipole 835 MHz	SID835	47/12 DIP 0G835- 210	SATIMO	
IEEE REF Dipole 1800 MHz	SID1800	47/12 DIP 1G800- 212	SATIMO	
IEEE REF Dipole 1900 MHz	SID2450	47/12 DIP 1G900- 213	SATIMO	
Dosimetric E-field Probe	EX3DV4	3978	SPEAG	
2450MHz System Validation Dipole	D2450V2	937	SPEAG	
5GHz System Validation Dipole	D5GHzv2	1164	SPEAG	

Annex E. LTE CA setup description

As per *FCC OET KDB 941225 D05A – Rel. 10 LTE SAR Test Guidance and KDB Inquiries*, when carrier aggregation is limited to downlink only; i.e., there is no uplink carrier aggregation, uplink maximum output power (single carrier) is measured for the supported combinations of downlink carrier aggregation according to the frequency bands and channel bandwidths allowed for the uplink and downlink configuration combinations.

Uplink maximum output power is measured with downlink carrier aggregation active, using the channel with highest measured maximum output power when downlink carrier aggregation is inactive, to confirm that when downlink carrier aggregation is active uplink maximum output power remains within the specified tune-up tolerance limits and not more than $\frac{1}{4}$ dB higher than the maximum output power measured when downlink carrier aggregation inactive.

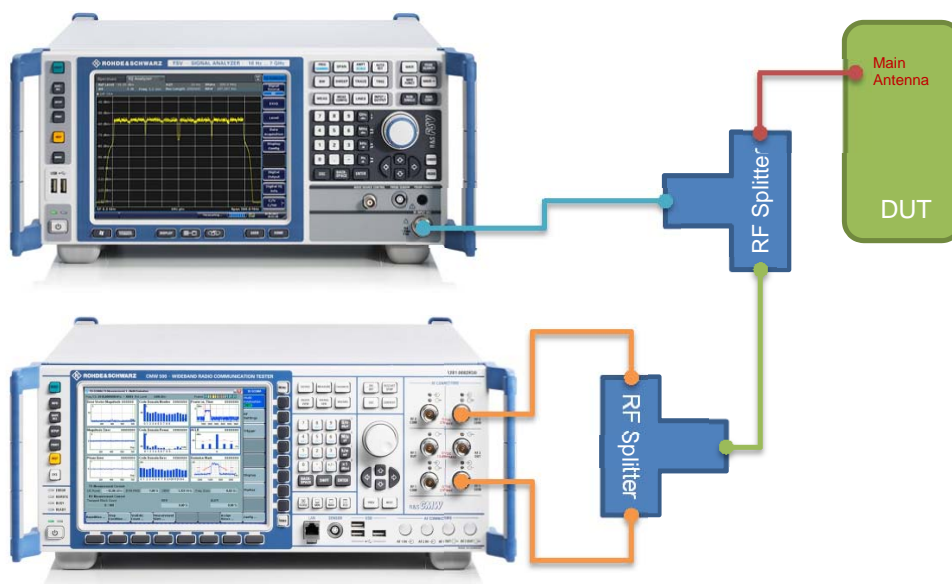
If the DUT meets this $\frac{1}{4}$ dB limit, no SAR evaluation is required for Carrier Aggregation modes.

This Annex describes the setup used and provides spectrum screenshot samples for each CA band combination.

E.1 LTE CA Conducted Power Measurement Setup

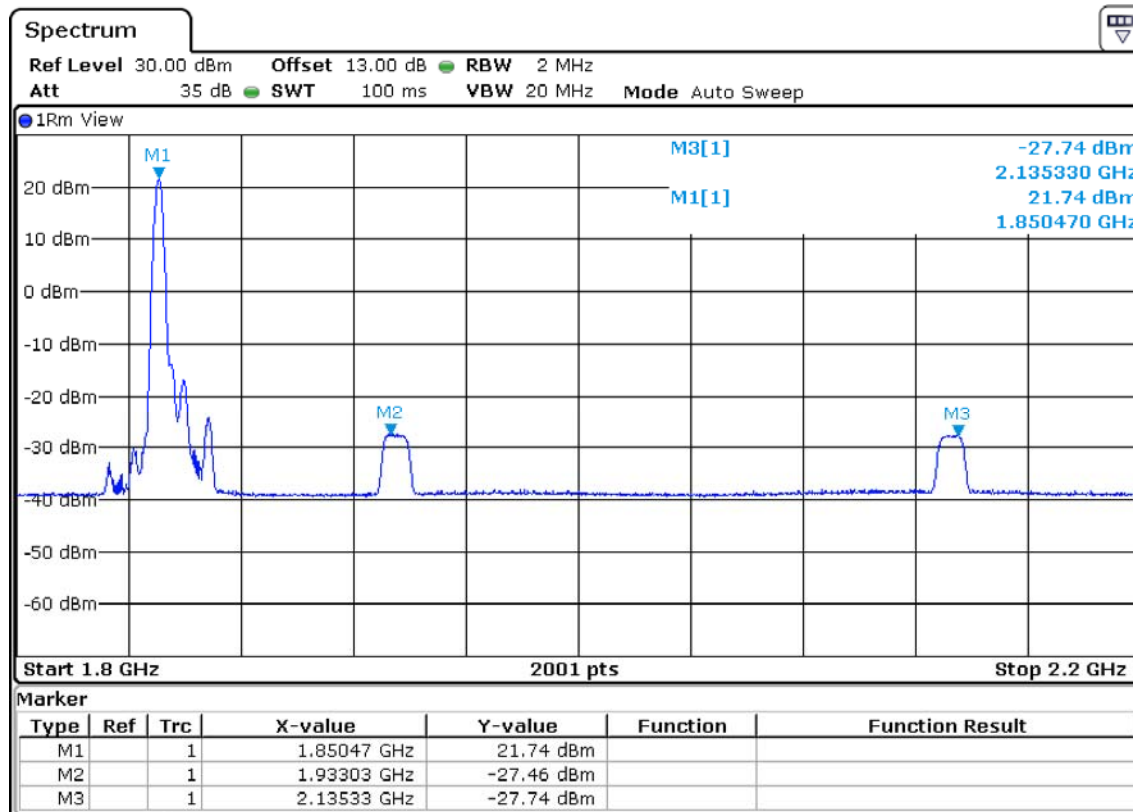


E.2 LTE CA Spectrum Measurement Setup



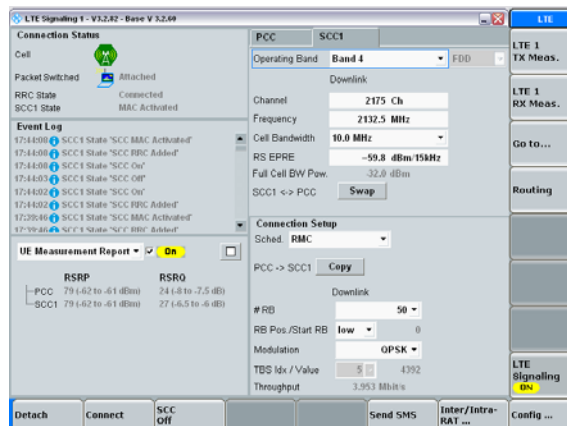
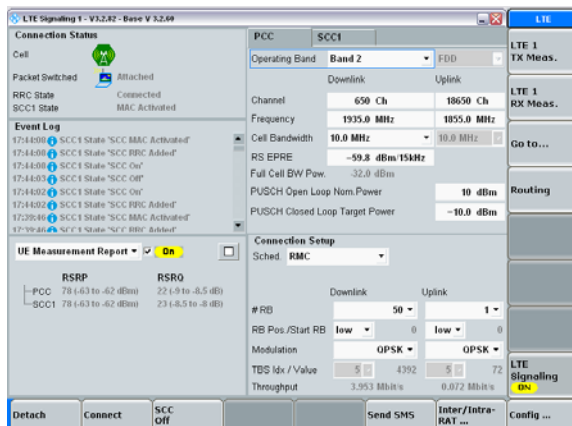
E.3 Sample Spectrums and CMW500 Configuration

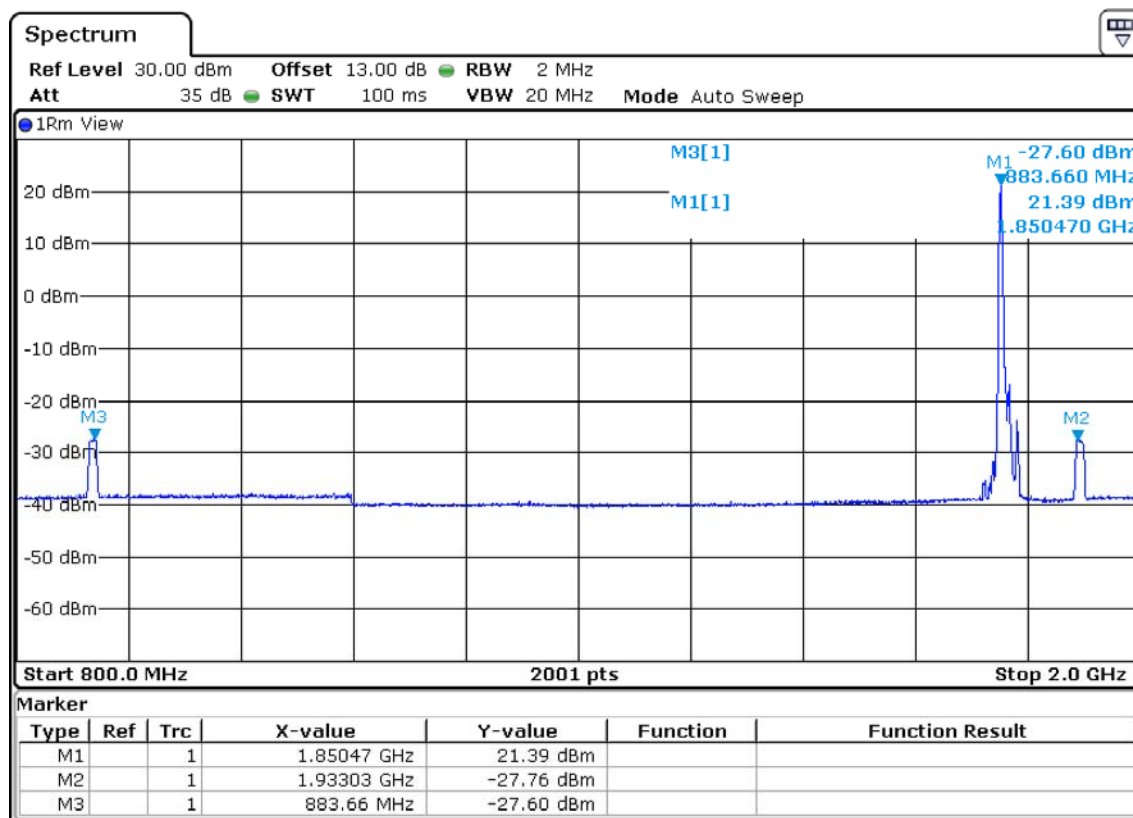
E.3.1 CA_2A_4A



Primary Component Carrier Configuration

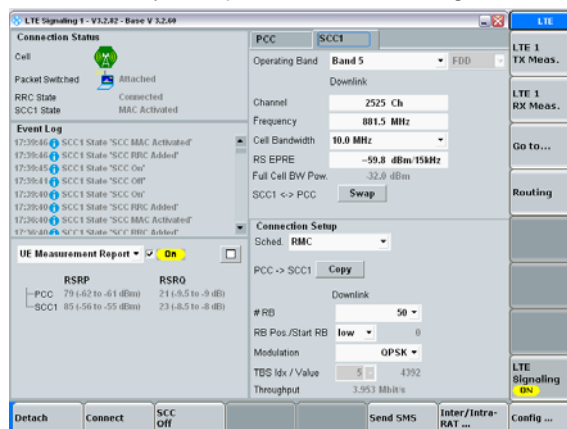
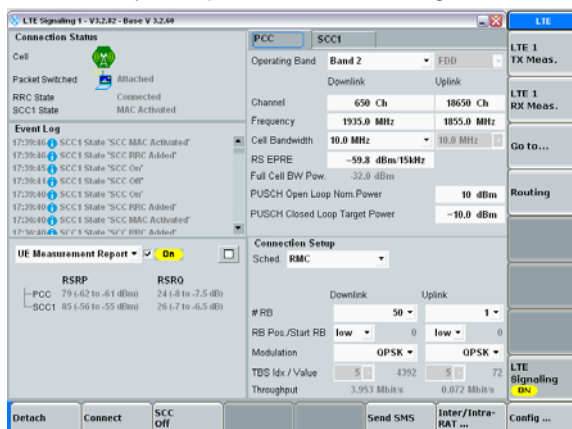
Secondary Component Carrier Configuration

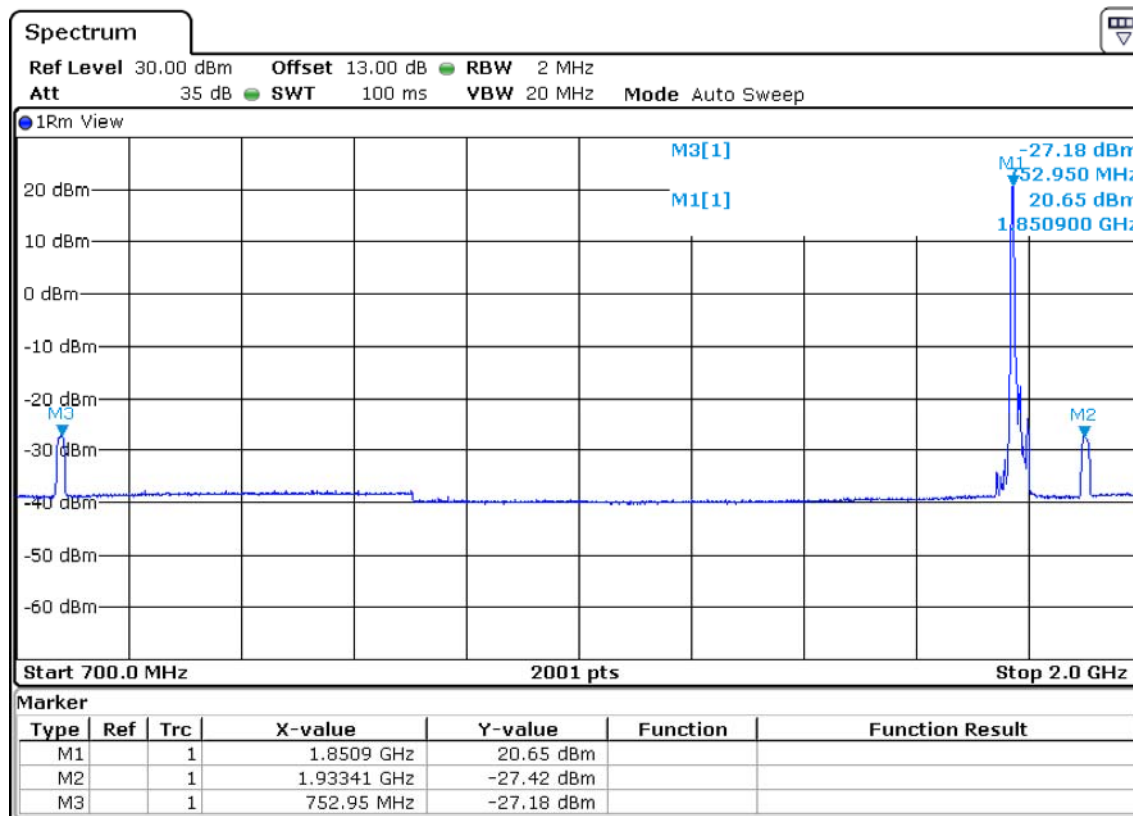


E.3.2 CA_2A_5A


Primary Component Carrier Configuration

Secondary Component Carrier Configuration



E.3.3 CA_2A_13A


Primary Component Carrier Configuration

Secondary Component Carrier Configuration

Primary Component Carrier Configuration

Operating Band: Band 2 (FDD)

Channel: 650 Ch (Downlink), 18650 Ch (Uplink)

Frequency: 1935.0 MHz (Downlink), 1855.0 MHz (Uplink)

Cell Bandwidth: 10.0 MHz (Downlink), 10.0 MHz (Uplink)

RS EPRE: -59.8 dBm/15kHz

Full Cell BW Pow.: -32.0 dBm

PUSCH Open Loop Nom Power: 10 dBm

PUSCH Closed Loop Target Power: -10.0 dBm

Connection Setup: Sched. RMC

#RB: 50 (Downlink), 1 (Uplink)

RB Pos./Start RB: low (Downlink), low (Uplink)

Modulation: QPSK (Downlink), QPSK (Uplink)

TBS Idx / Value: 5 / 4392 (Downlink), 5 / 72 (Uplink)

Throughput: 3.953 Mbit/s (Downlink), 0.072 Mbit/s (Uplink)

UE Measurement Report: On

RSRP: PCC 79 (-62 to -61 dBm), SCC1 85 (-56 to -55 dBm)

RSRQ: PCC 23 (-8.5 to -8 dB), SCC1 24 (-8 to -7.5 dB)

Secondary Component Carrier Configuration

Operating Band: Band 13 (FDD)

Channel: 5230 Ch (Downlink), 7510 Ch (Uplink)

Frequency: 751.0 MHz (Downlink), 751.0 MHz (Uplink)

Cell Bandwidth: 10.0 MHz (Downlink), 10.0 MHz (Uplink)

RS EPRE: -59.8 dBm/15kHz

Full Cell BW Pow.: -32.0 dBm

Connection Setup: Sched. RMC

#RB: 50 (Downlink), 1 (Uplink)

RB Pos./Start RB: low (Downlink), low (Uplink)

Modulation: QPSK (Downlink), QPSK (Uplink)

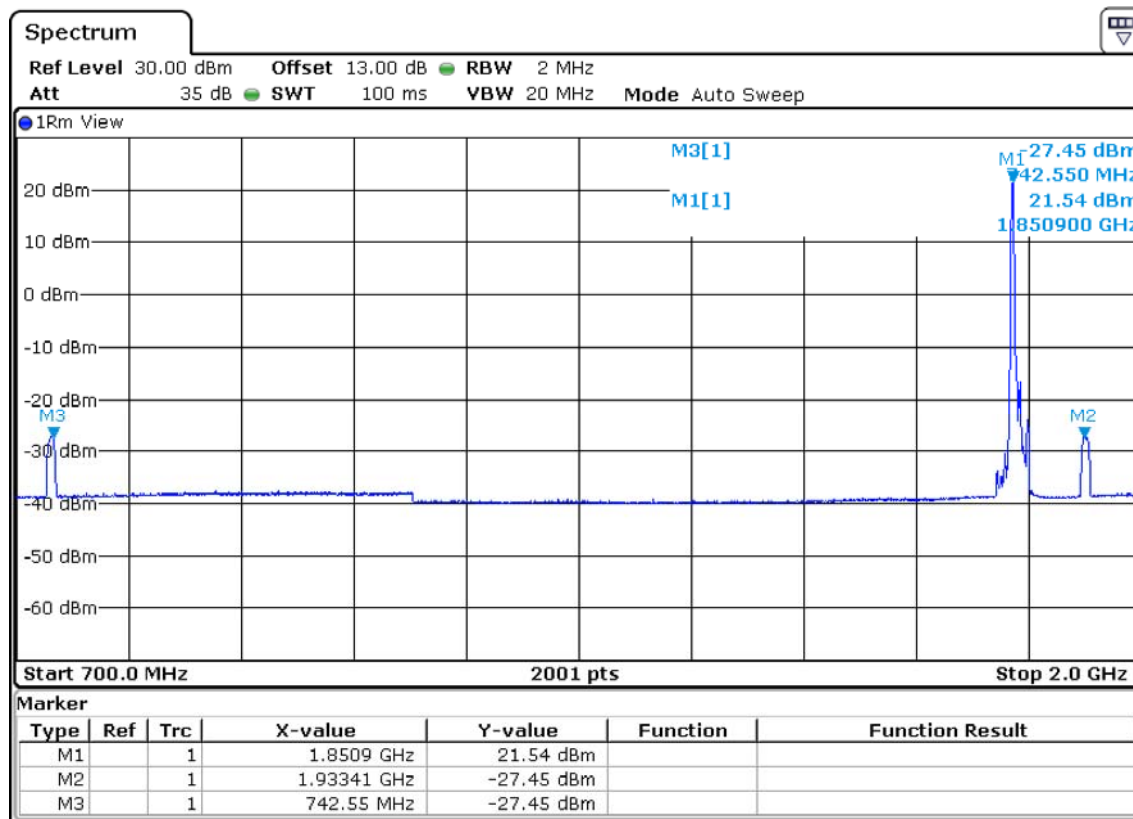
TBS Idx / Value: 5 / 4392 (Downlink), 5 / 72 (Uplink)

Throughput: 3.953 Mbit/s (Downlink), 0.072 Mbit/s (Uplink)

UE Measurement Report: On

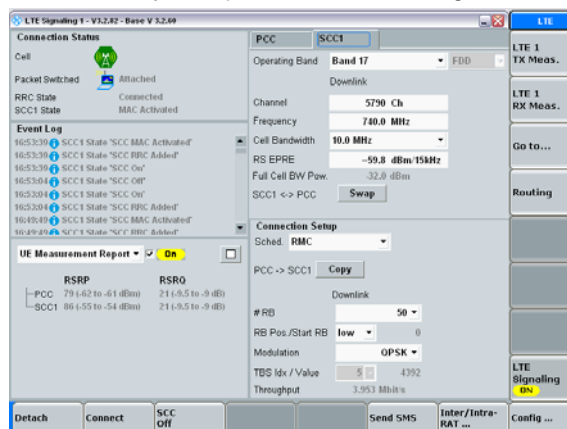
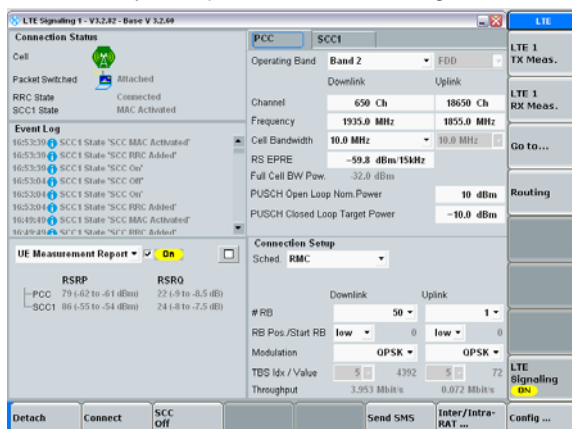
RSRP: PCC 79 (-62 to -61 dBm), SCC1 86 (-55 to -54 dBm)

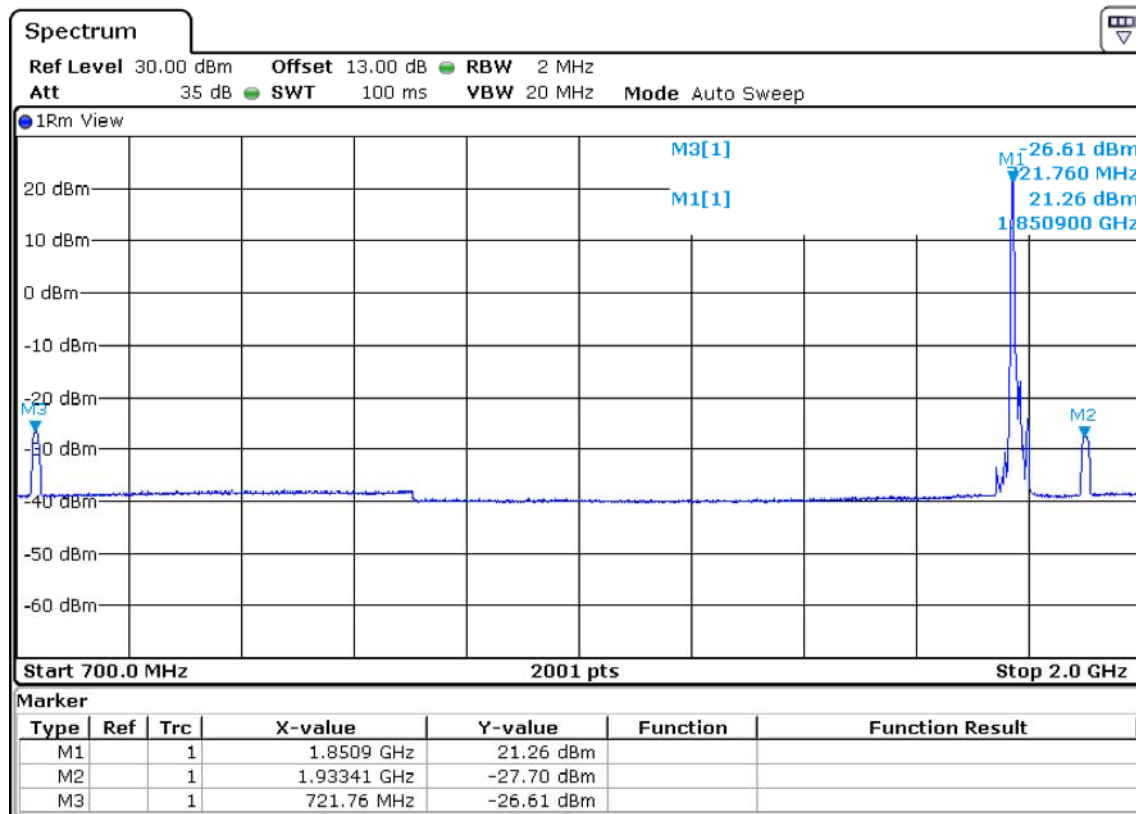
RSRQ: PCC 21 (-8.5 to -9 dB), SCC1 22 (-9 to -8.5 dB)

E.3.4 CA_2A_17A


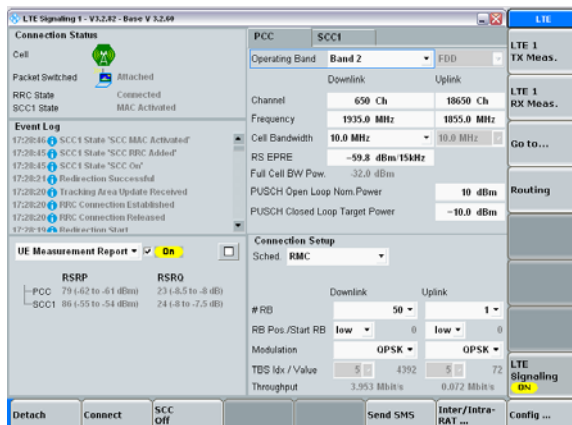
Primary Component Carrier Configuration

Secondary Component Carrier Configuration

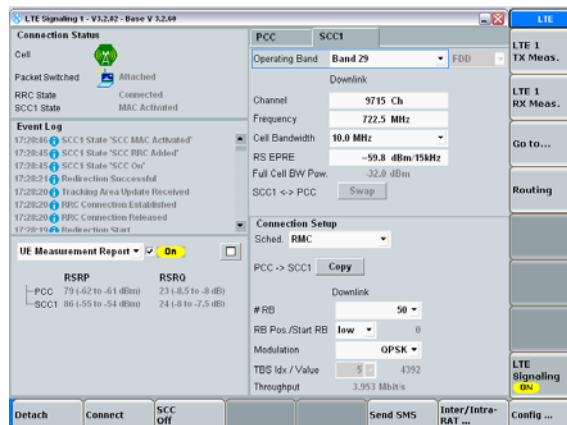


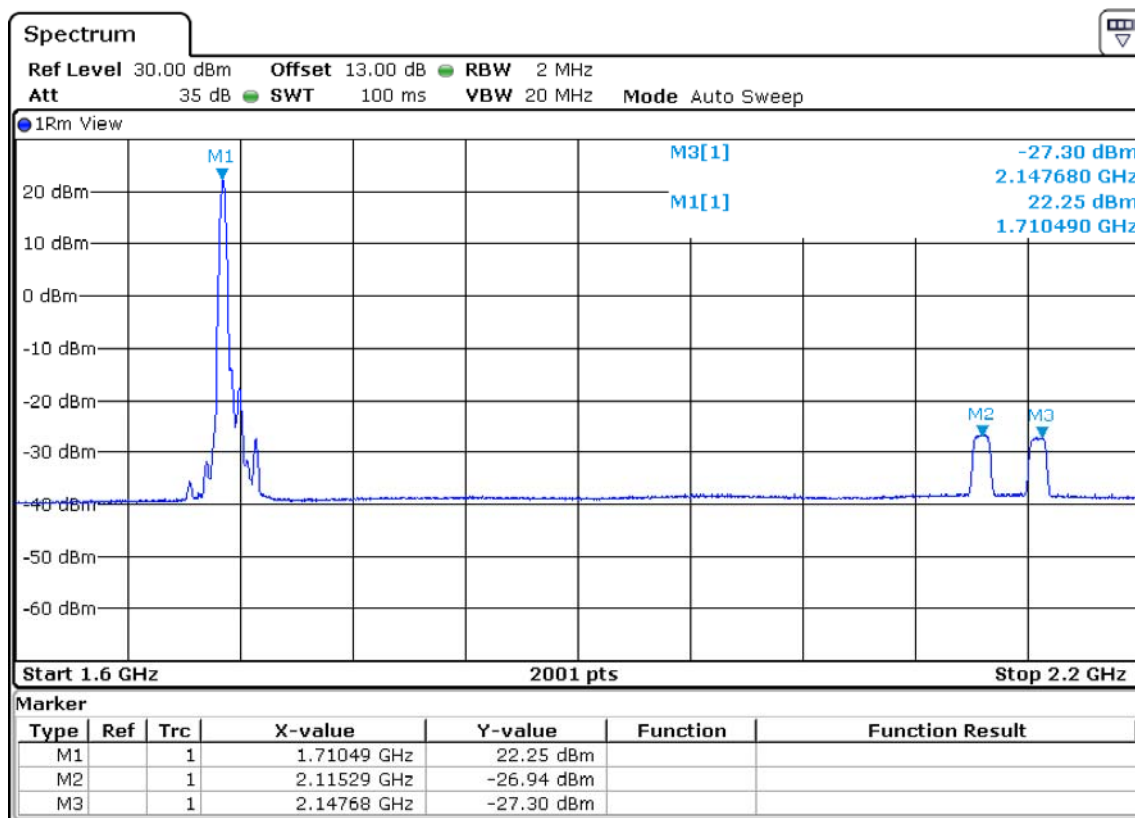
E.3.5 CA_2A_29A


Primary Component Carrier Configuration



Secondary Component Carrier Configuration



E.3.6 CA_4A_4A


Primary Component Carrier Configuration

Secondary Component Carrier Configuration

Primary Component Carrier Configuration

Operating Band: Band 4
 Channel: 2000 Ch (Downlink), 2000 Ch (Uplink)
 Frequency: 2115.0 MHz (Downlink), 1715.0 MHz (Uplink)
 Cell Bandwidth: 10.0 MHz (Downlink), 10.0 MHz (Uplink)
 RS EPRE: -59.8 dBm/15kHz
 Full Cell BW Pow.: -32.0 dBm
 PUSCH Open Loop Nom Power: 10 dBm
 PUSCH Closed Loop Target Power: -10.0 dBm

UE Measurement Report: On

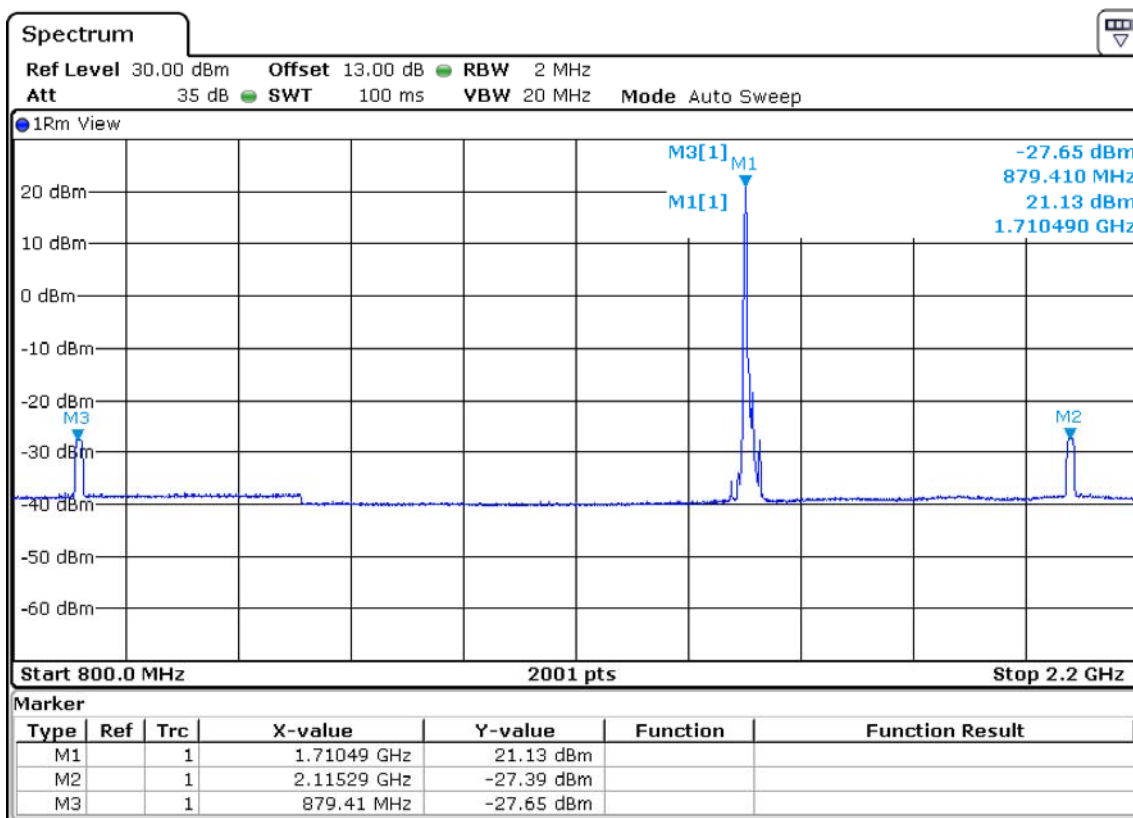
RSRP: PCC 83 (-58 to -57 dBm), SCC1 37 (-104 to -103 dBm)
 RSRQ: PCC 20 (-10 to -9.5 dB), SCC1 0 (-19.5 dB)

Secondary Component Carrier Configuration

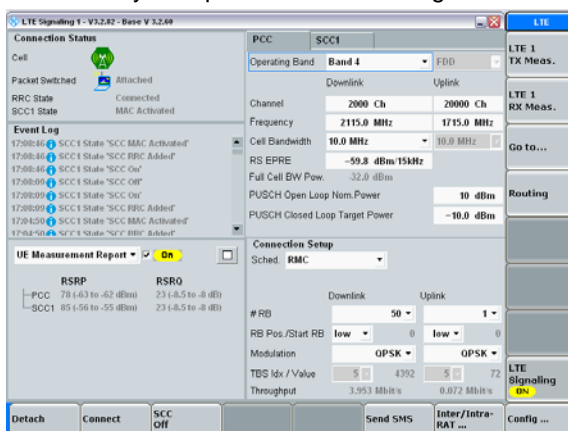
Operating Band: Band 4
 Channel: 2300 Ch (Downlink)
 Frequency: 2145.0 MHz
 Cell Bandwidth: 10.0 MHz
 RS EPRE: -59.8 dBm/15kHz
 Full Cell BW Pow.: -32.0 dBm
 SCC1 <-> PCC: Swap

UE Measurement Report: On

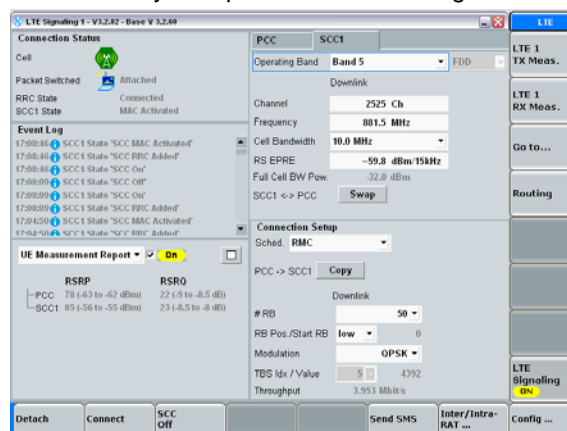
RSRP: SCC1 83 (-58 to -57 dBm), PCC 37 (-104 to -103 dBm)
 RSRQ: SCC1 19 (-10.5 to -10 dB), PCC 0 (-19.5 dB)

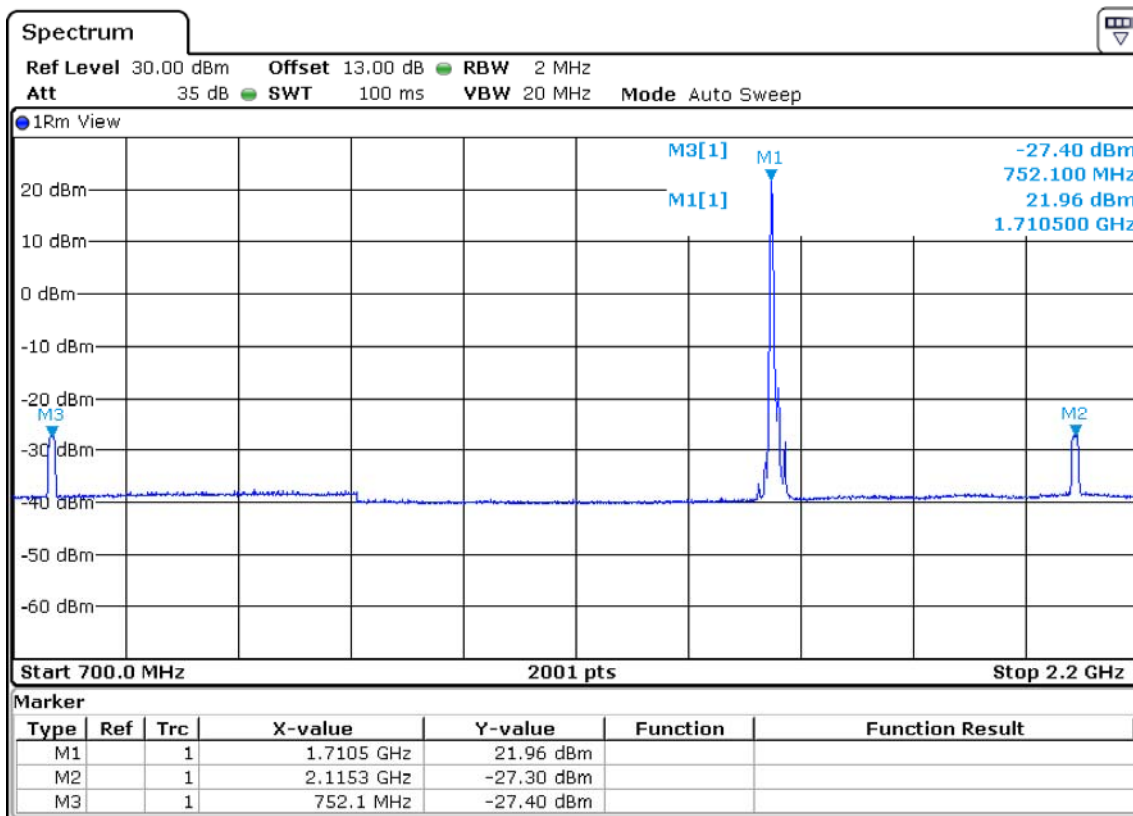
E.3.7 CA_4A_5A


Primary Component Carrier Configuration



Secondary Component Carrier Configuration



E.3.8 CA_4A_13A


Primary Component Carrier Configuration

Secondary Component Carrier Configuration

Primary Component Carrier Configuration

Operating Band: Band 4

Channel: 2000 Ch (Downlink), 20000 Ch (Uplink)

Frequency: 2115.0 MHz (Downlink), 1715.0 MHz (Uplink)

Cell Bandwidth: 10.0 MHz (Downlink), 10.0 MHz (Uplink)

RS EPRE: -59.8 dBm/15kHz

Full Cell BW Pow.: -32.0 dBm

PUSCH Open Loop Nom Power: 10 dBm

PUSCH Closed Loop Target Power: -10.0 dBm

Modulation: QPSK

Throughput: 3.953 Mbit/s (Downlink), 0.072 Mbit/s (Uplink)

Secondary Component Carrier Configuration

Operating Band: Band 13

Channel: 5230 Ch

Frequency: 751.0 MHz

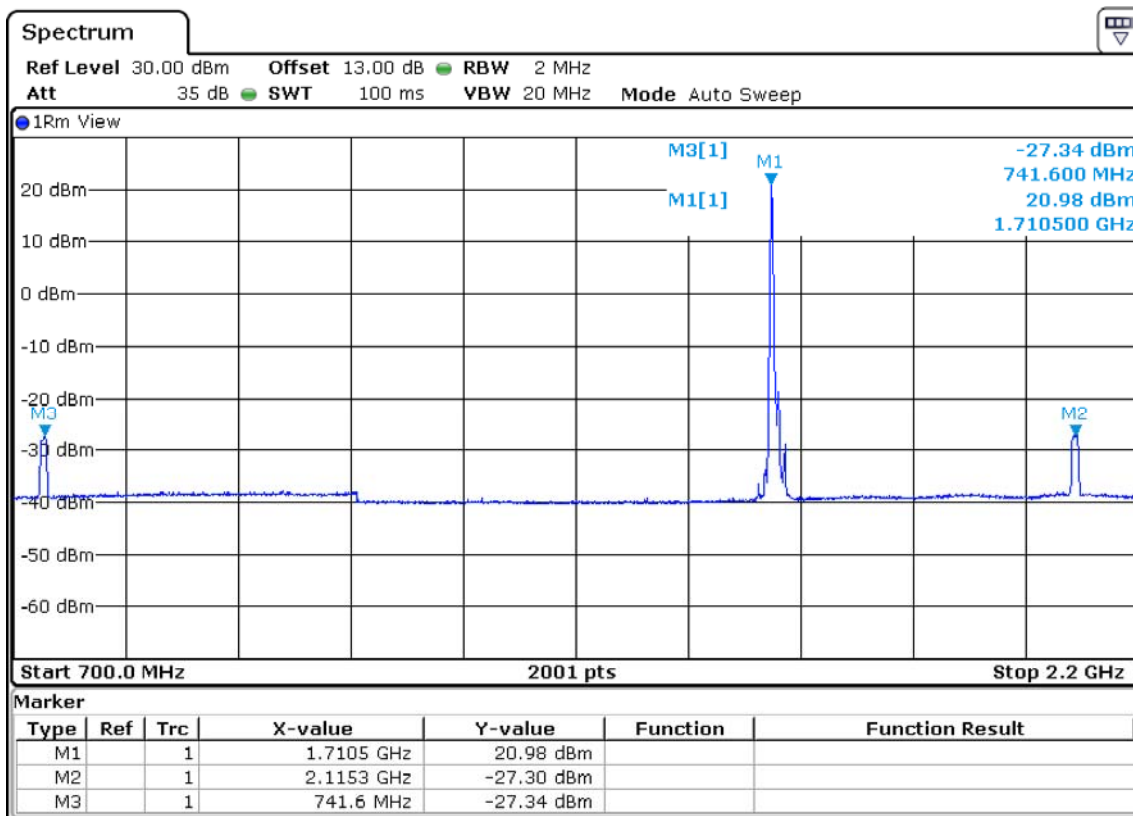
Cell Bandwidth: 10.0 MHz

RS EPRE: -59.8 dBm/15kHz

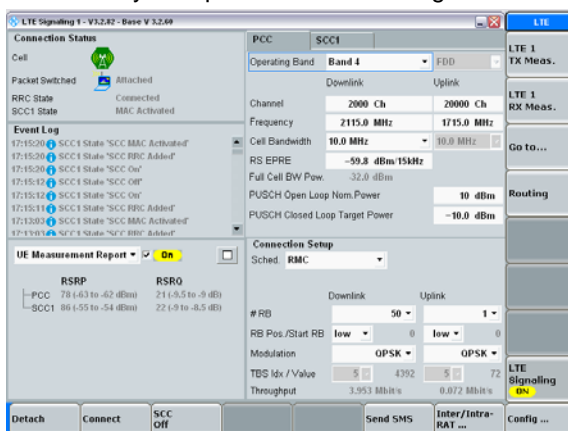
Full Cell BW Pow.: -32.0 dBm

Modulation: QPSK

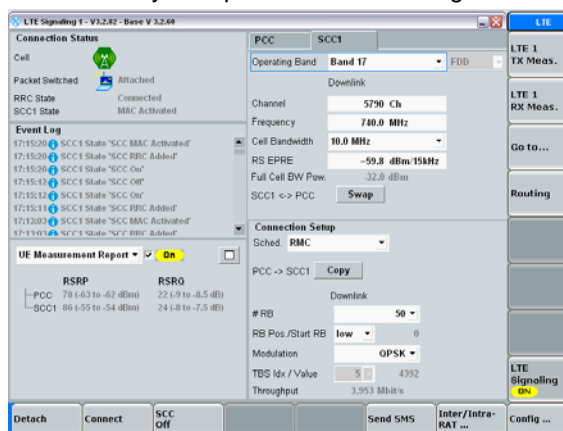
Throughput: 3.953 Mbit/s

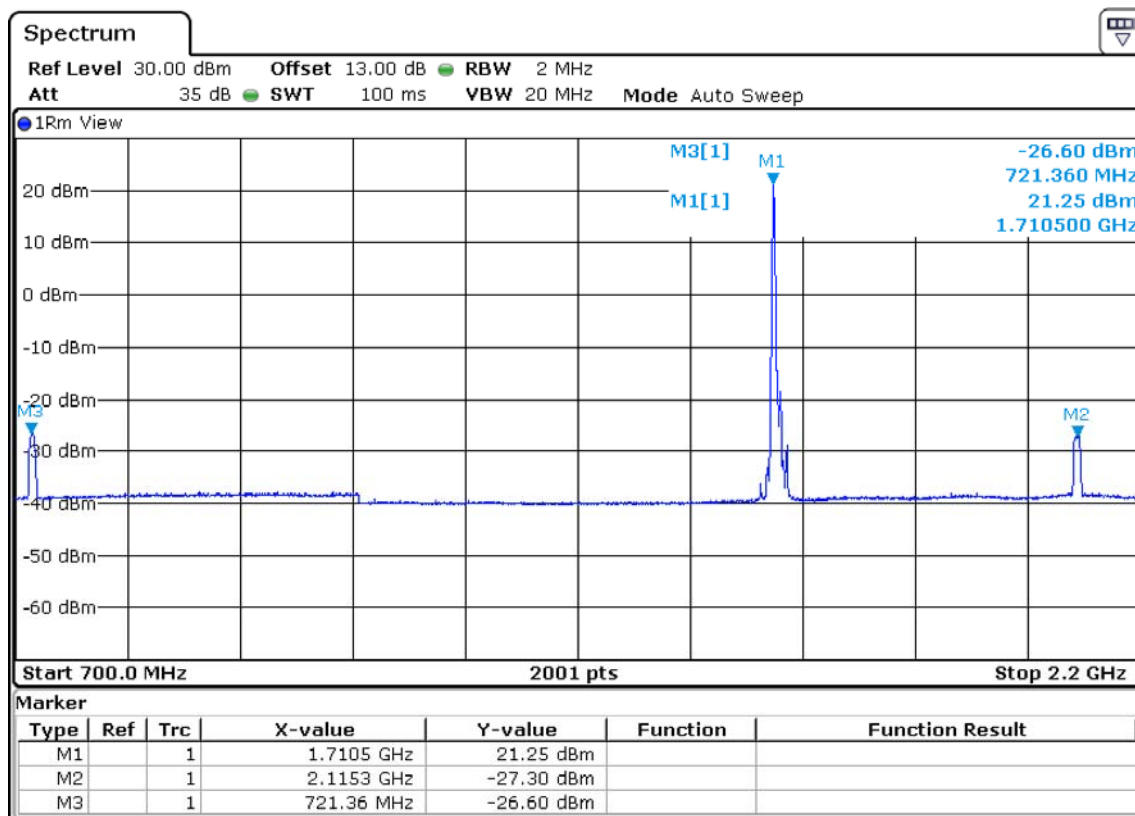
E.3.9 CA_4A_17A


Primary Component Carrier Configuration



Secondary Component Carrier Configuration



E.3.10 CA_4A_29A


Primary Component Carrier Configuration

Secondary Component Carrier Configuration

