

EXHIBIT Y – Output Power vs. DC Input

FCC ID O2Z-BT2

3.175Vdc Input

15: 52: 03 MAR 07, 2001

hp

MKR 2.402063 GHz

REF 2.818 mW

#AT 30 dB

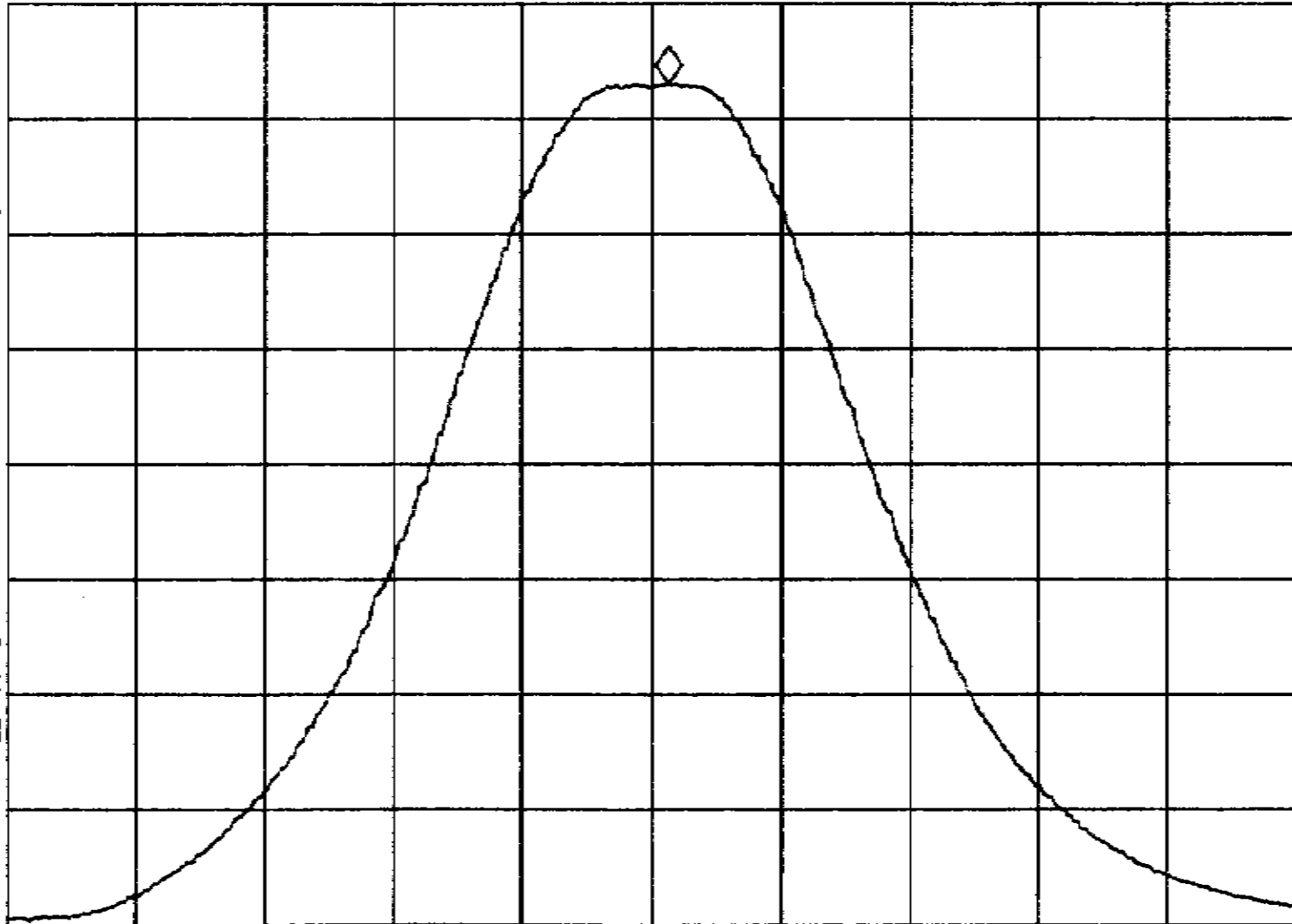
2.3496 mW

No user
Menu

PEAK
LIN

OFFST
2.5
dB

VA SB
SC FC
CORR



CENTER 2.402000 GHz

SPAN 5.000 MHz

#RES BW 1.0 MHz

#VBW 1 MHz

SWP 20.0 msec

3.3Vdc Input

15: 43: 54 MAR 07, 2001

hp

MKR 2.402088 GHz

REF 2.818 mW

#AT 30 dB

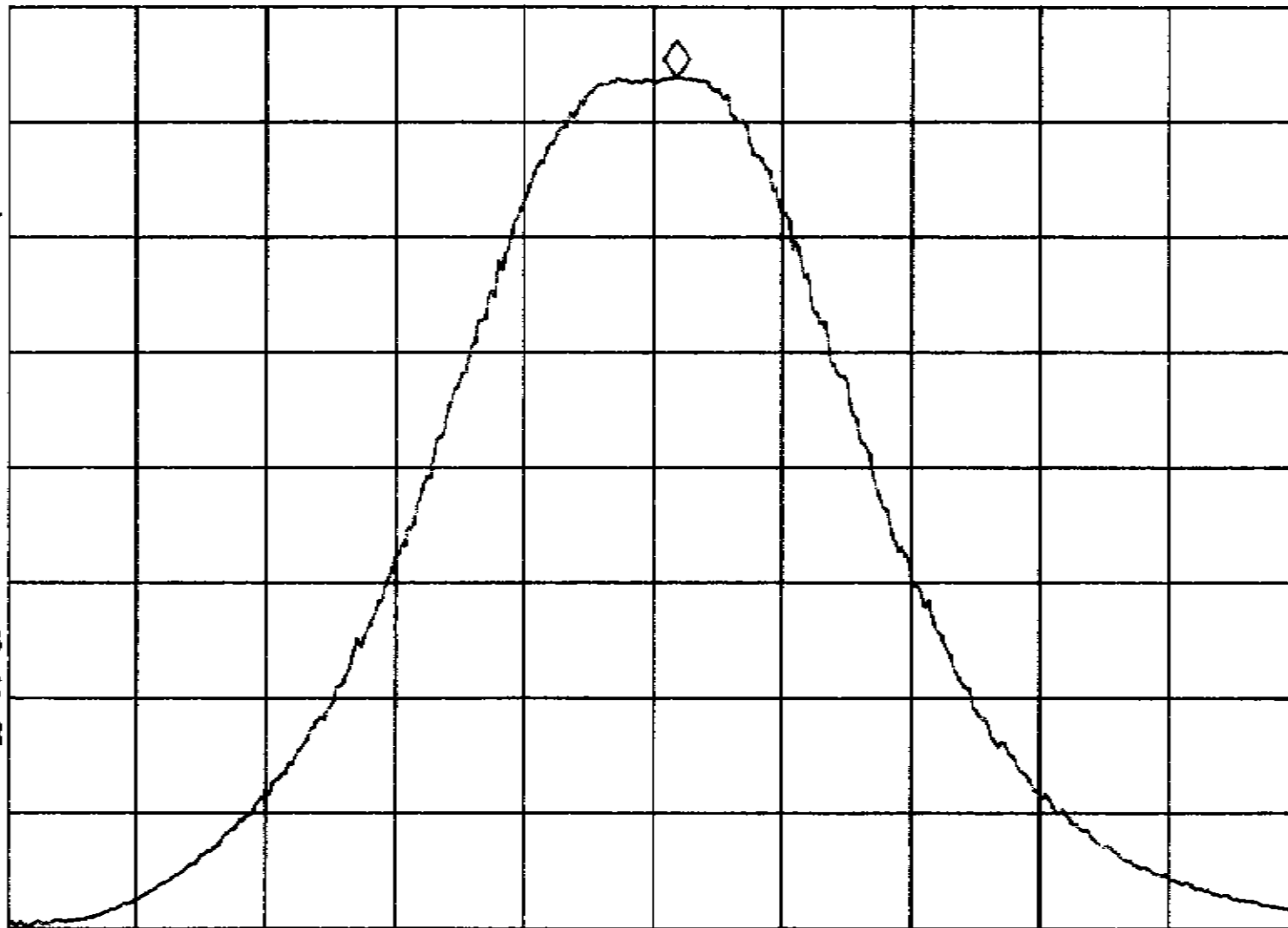
2.4044 mW

No user
Menu

PEAK
LIN

OFFST
2.5
dB

VA SB
SC FC
CORR



CENTER 2.402000 GHz

SPAN 5.000 MHz

#RES BW 1.0 MHz

#VBW 1 MHz

SWP 20.0 msec

3.6Vdc Input

15: 49: 18 MAR 07, 2001

hp

MKR 2.402063 GHz

REF 2.818 mW

#AT 30 dB

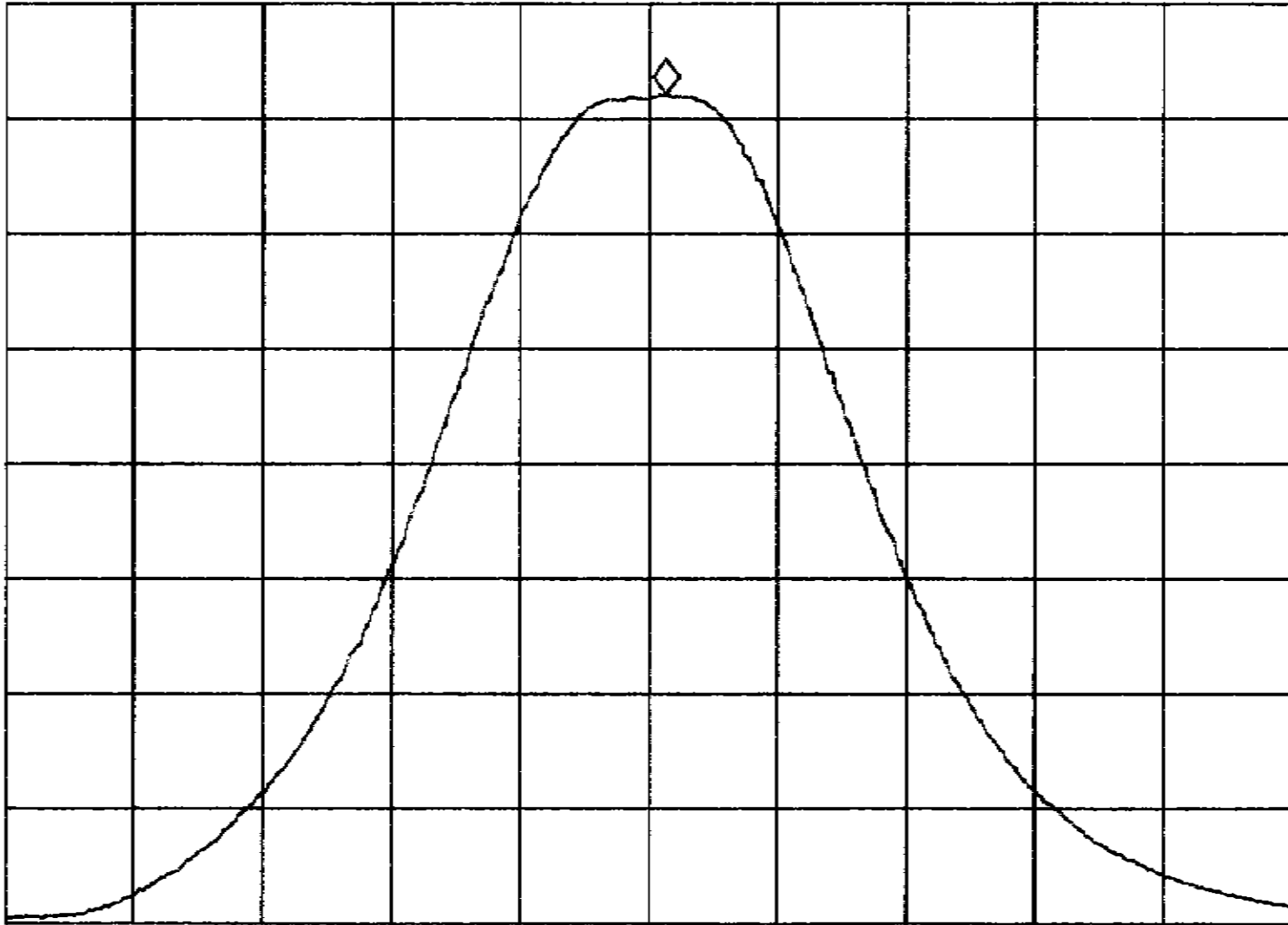
2.2856 mW

No user
Menu

PEAK
LIN

OFFST
2.5
dB

VA SB
SC FC
CORR



CENTER 2.402000 GHz

SPAN 5.000 MHz

#RES BW 1.0 MHz

#VBW 1 MHz

SWP 20.0 msec