

EXHIBIT T – Conducted Spurious Emissions

FCC ID O2Z-BT2

11:01:47 JAN 12, 2001

Spurious RF Conducted Emissions, Low

MKR 1.805 GHz

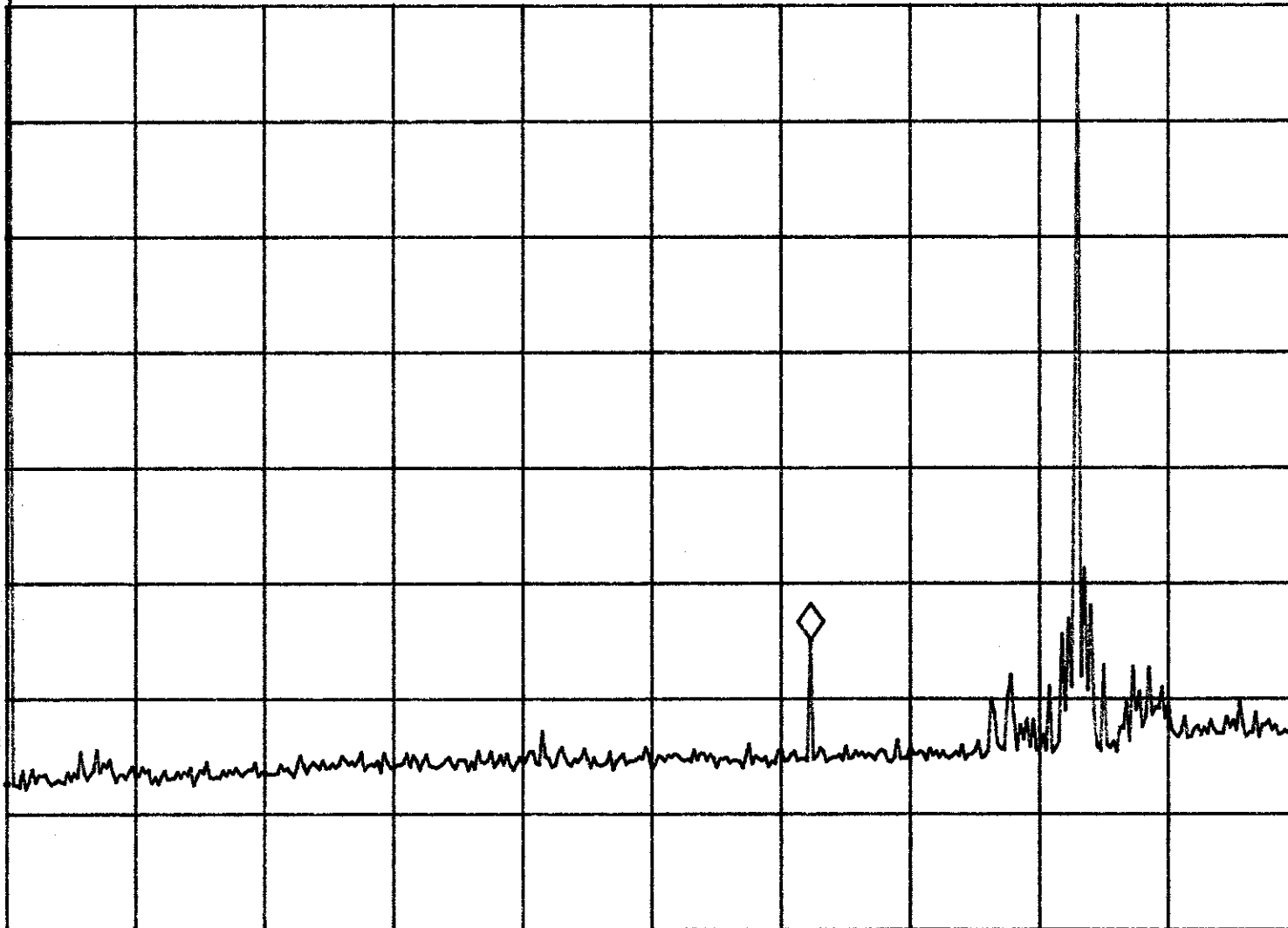
REF 107.0 dB μ V #AT 20 dB

52.04 dB μ V

No user
Menu

PEAK
LOG
10
dB/

VA SB
SC FC
CORR



START 0 Hz

#RES BW 100 kHz

#VBW 100 kHz

STOP 2.900 GHz

SWP 870 msec

11:13:04 JAN 12, 2001

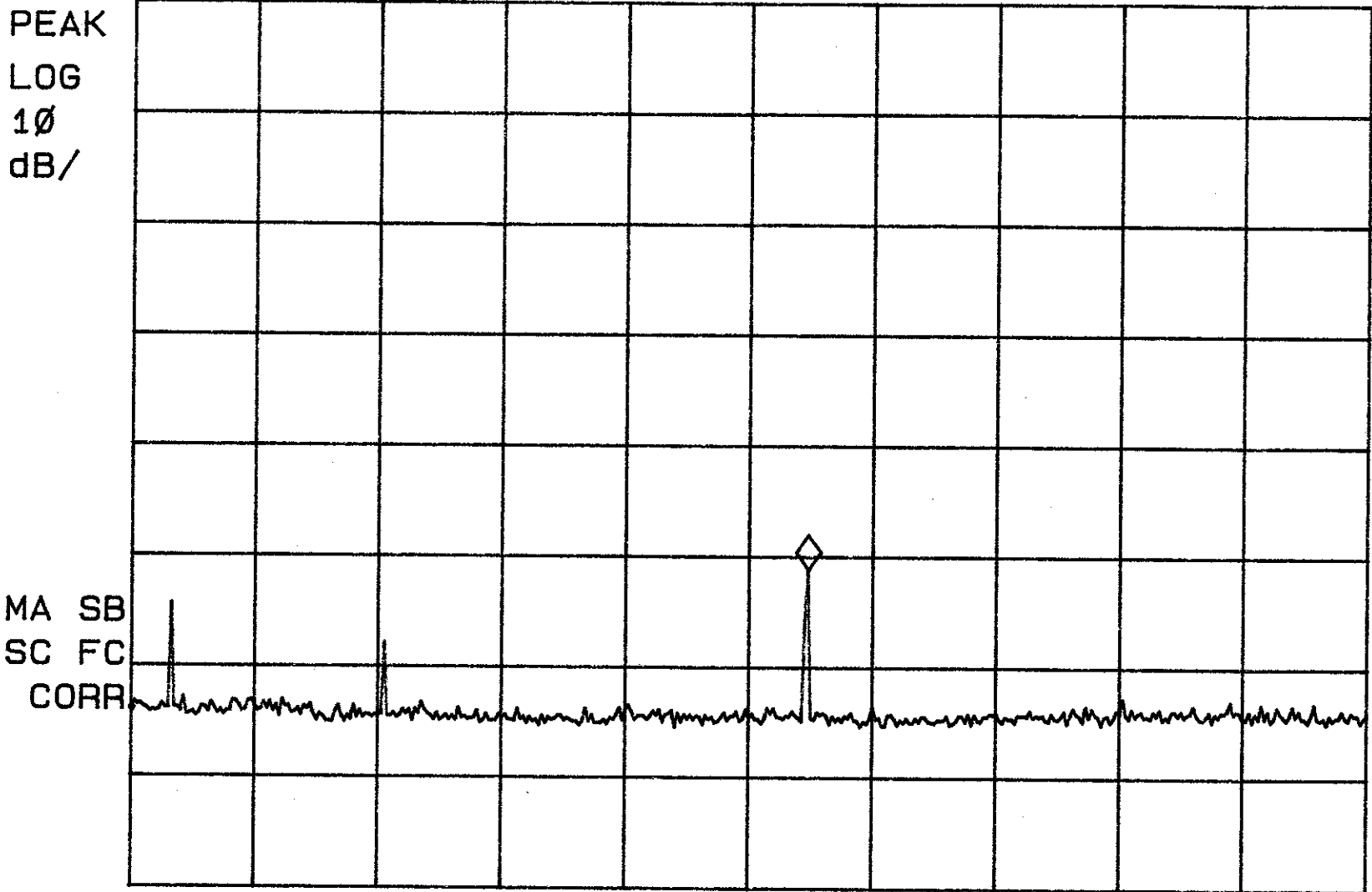
Spurious RF Conducted Emissions, Low

MKR 4.816 GHz

REF 107.0 dB μ V #AT 20 dB

55.80 dB μ V

No user
Menu



START 2.899 GHz

STOP 6.400 GHz

#RES BW 100 KHz

#VBW 100 KHz

SWP 1.05 sec

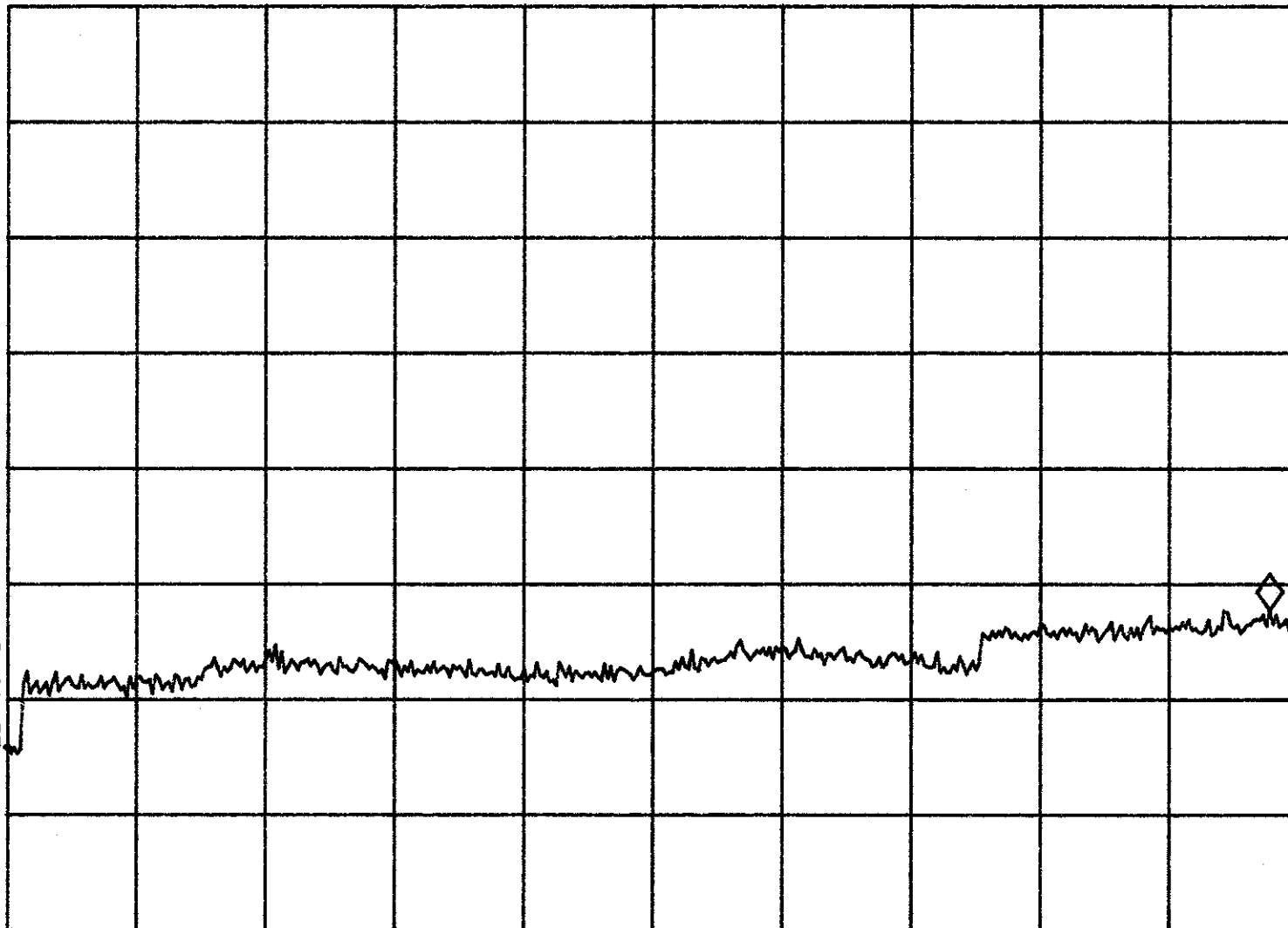
11: 15: 39 JAN 12, 2001

~~17~~ Spurious RF Conducted Emissions, Low MKR 14.806 GHz
REF 107.0 dB μ V #AT 20 dB 54.71 dB μ V

No user
Menu

PEAK
LOG
10
dB/

MA SB
SC FC
CORR



START 6.399 GHz

#RES BW 100 kHz

#VBW 100 kHz

STOP 15.000 GHz

SWP 2.58 sec

11:19:46 JAN 12, 2001

Spurious RF Conducted Emissions, Low

MKR 24.97 GHz

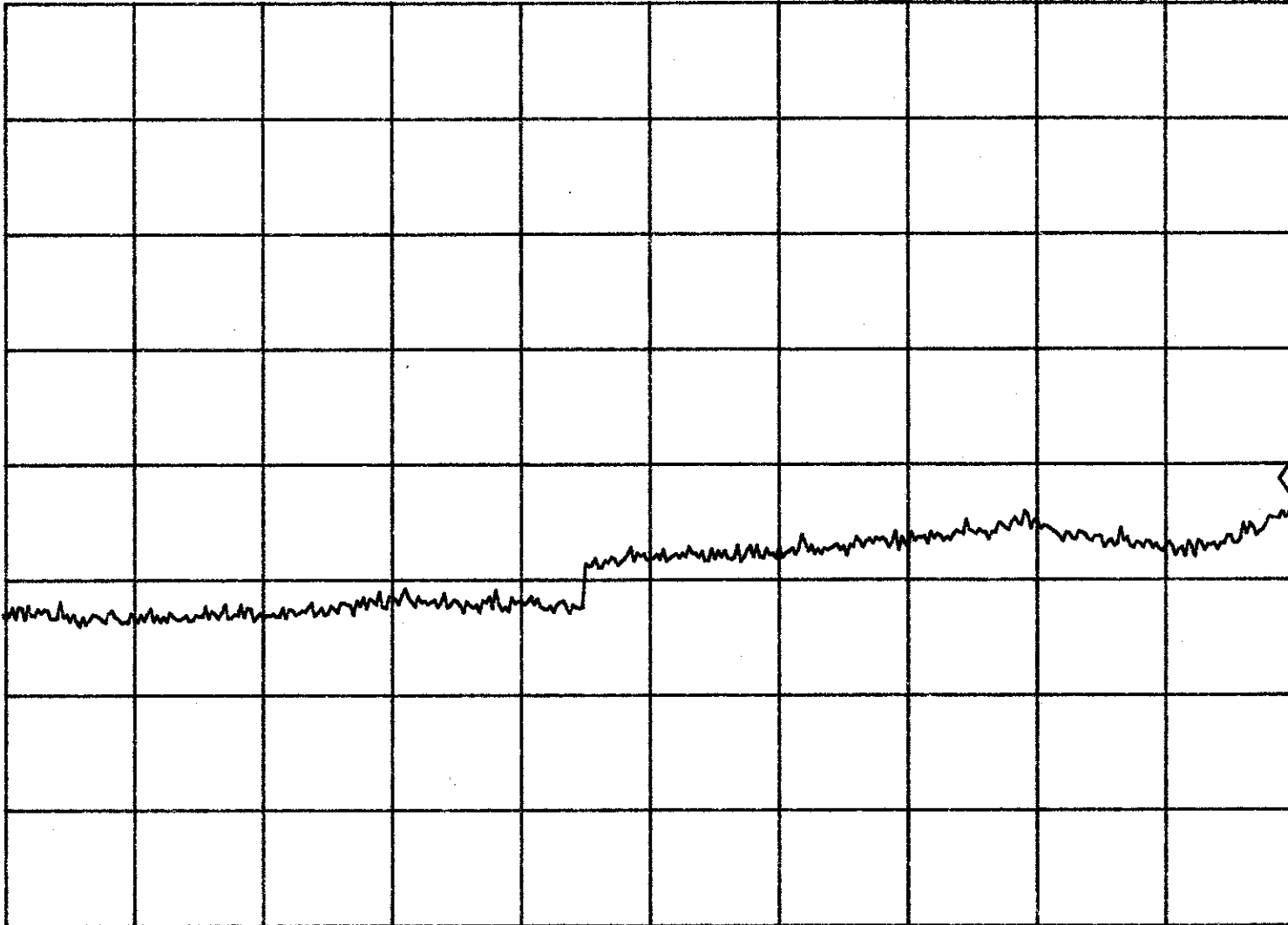
REF 107.0 dB μ V #AT 20 dB

64.11 dB μ V

No user
Menu

PEAK
LOG
10
dB/

VA SB
SC FC
CORR



START 15.00 GHz

STOP 25.00 GHz

#RES BW 100 kHz

#VBW 100 kHz

SWP 3.00 sec

11:33:21 JAN 12, 2001

Spurious RF Conducted Emissions, Mid

MKR 1.834 GHz

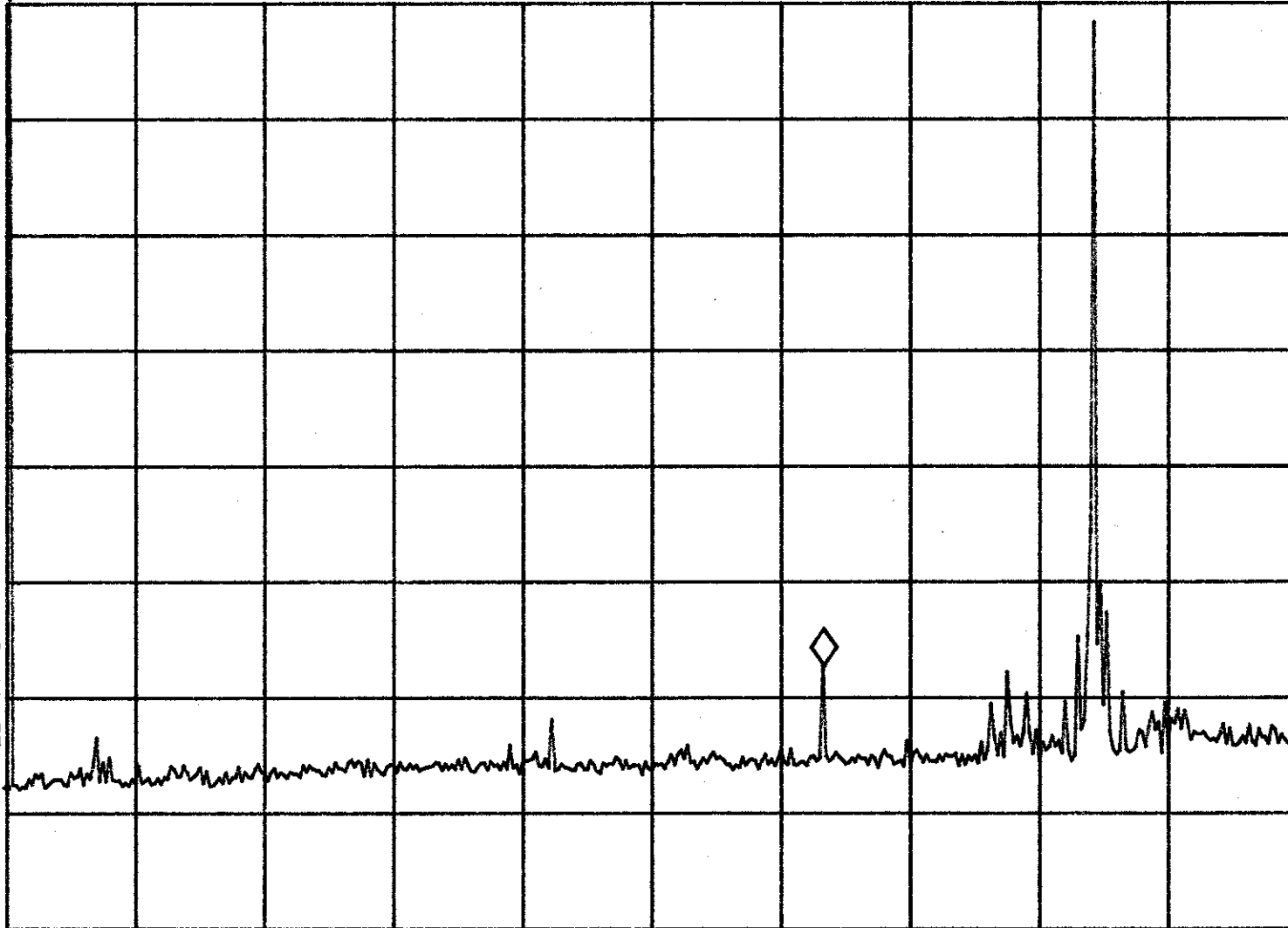
REF 107.0 dB μ V #AT 20 dB

49.73 dB μ V

No user
Menu

PEAK
LOG
10
dB/

VA SB
SC FC
CORR



START 0 Hz

STOP 2.900 GHz

#RES BW 100 kHz

#VBW 100 kHz

SWP 870 msec

11:35:35 JAN 12, 2001

Spurious RF Conducted Emissions, Mid

MKR 4.886 GHz

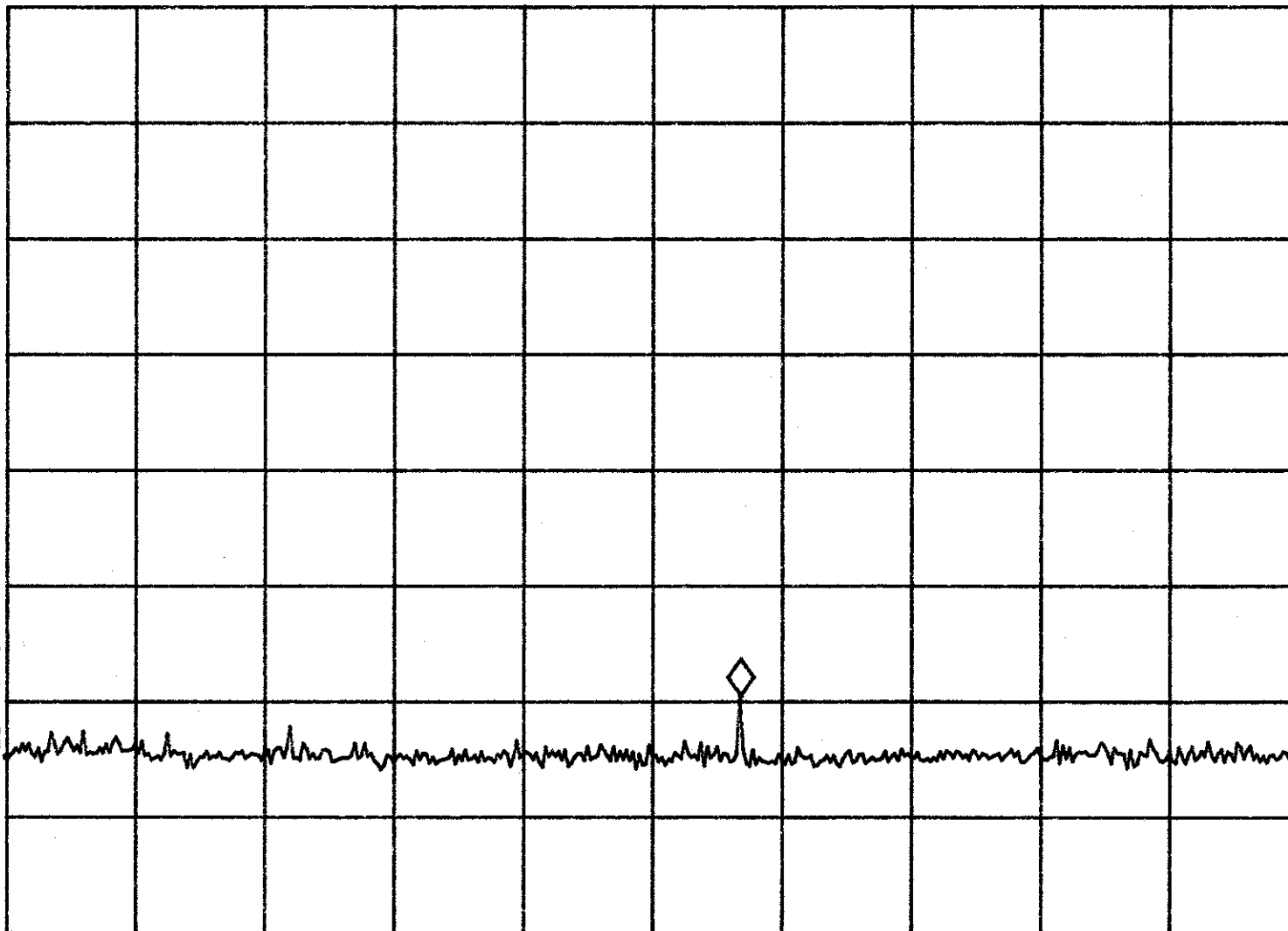
REF 107.0 dBμV #AT 20 dB

47.50 dBμV

No user
Menu

PEAK
LOG
10
dB/

VA SB
SC FC
CORR



START 2.899 GHz

STOP 6.400 GHz

#RES BW 100 kHz

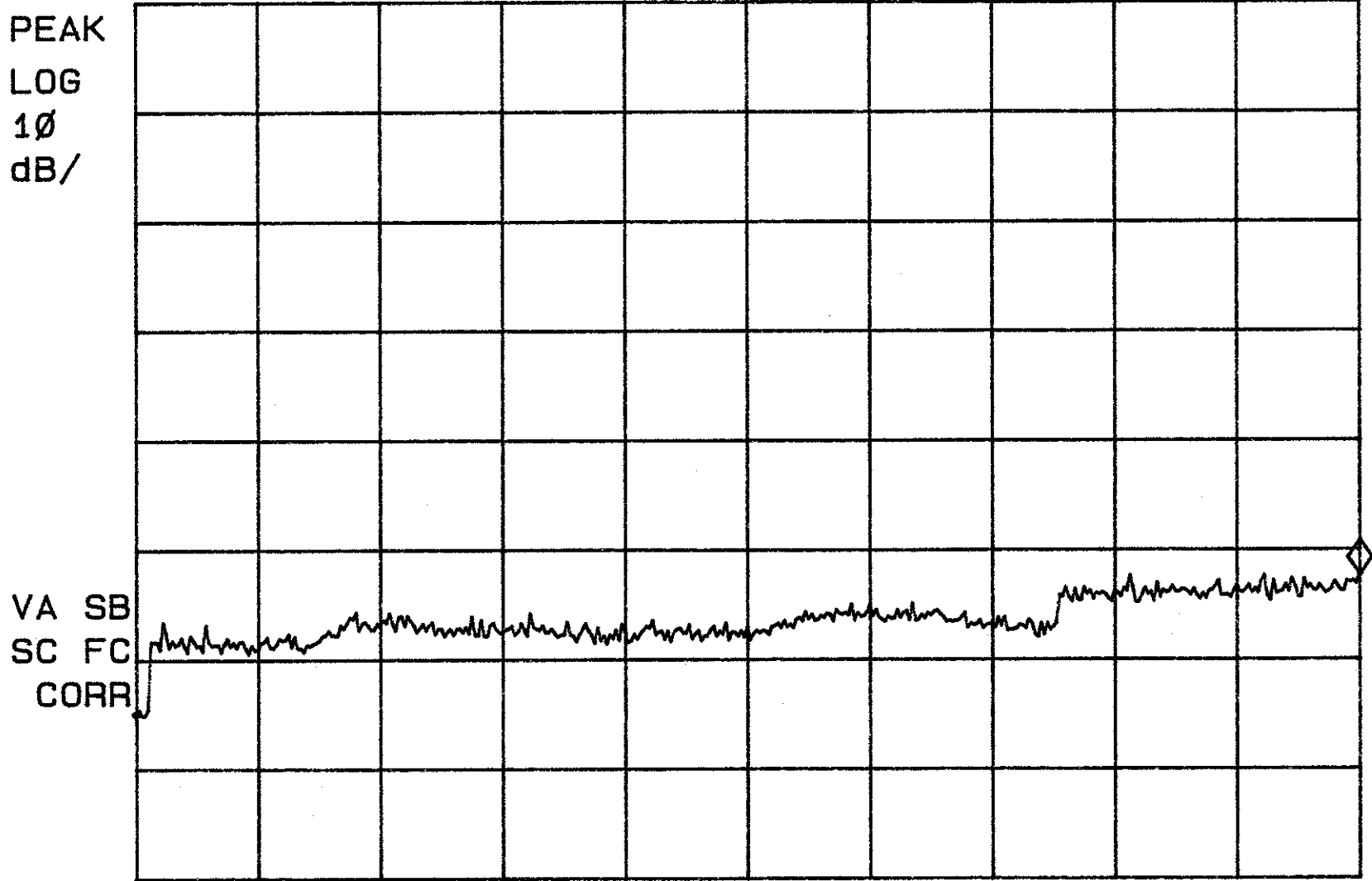
#VBW 100 kHz

SWP 1.05 sec

11:38:21 JAN 12, 2001

Spurious RF Conducted Emissions, Mid MKR 15.000 GHz
REF 107.0 dBμV #AT 20 dB 54.65 dBμV

No user
Menu



START 6.399 GHz STOP 15.000 GHz
#RES BW 100 KHz #VBW 100 KHz SWP 2.58 sec

11:43:13 JAN 12, 2001

Spurious RF Conducted Emissions, Mid

MKR 24.97 GHz

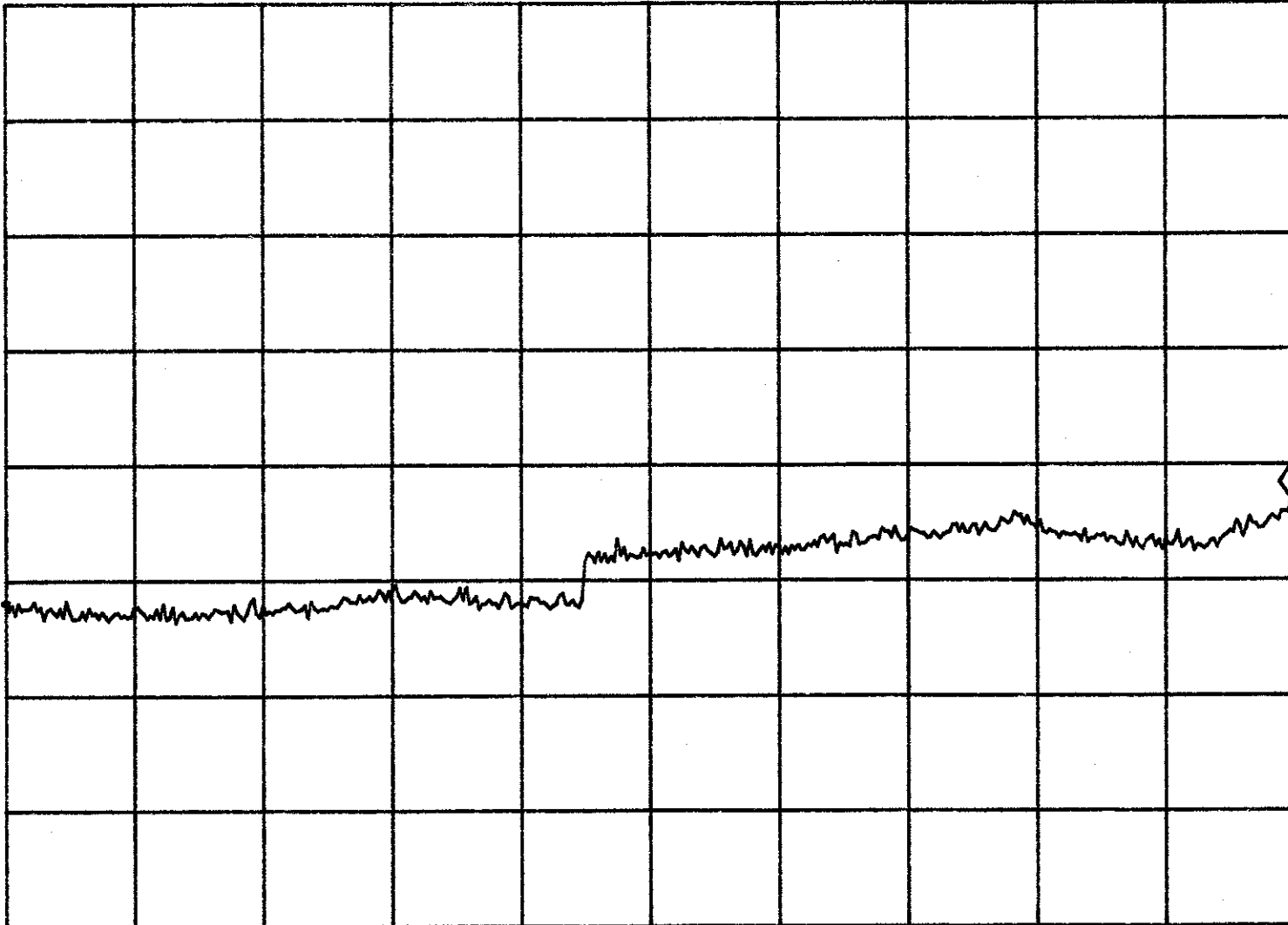
REF 107.0 dBμV #AT 20 dB

63.85 dBμV

No user
Menu

PEAK
LOG
10
dB/

VA SB
SC FC
CORR



START 15.00 GHz

STOP 25.00 GHz

#RES BW 100 kHz

#VBW 100 kHz

SWP 3.00 sec

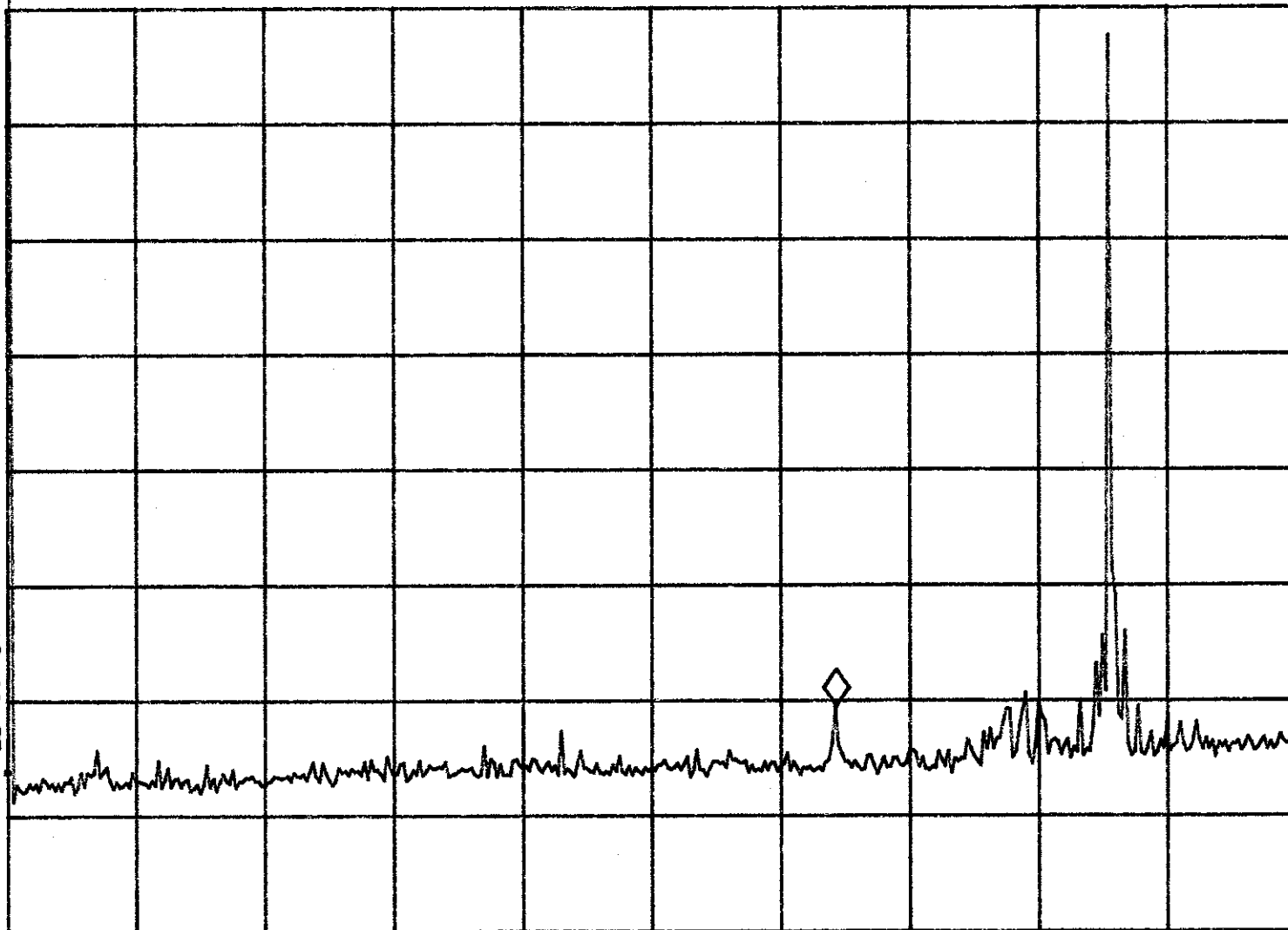
11:46:50 JAN 12, 2001

~~10~~ Spurious RF Conducted Emissions, High MKR 1.863 GHz
REF 107.0 dB μ V #AT 20 dB 46.50 dB μ V

No user
Menu

PEAK
LOG
10
dB/

VA SB
SC FC
CORR



START 0 Hz

#RES BW 100 KHz

#VBW 100 KHz

STOP 2.900 GHz

SWP 870 msec

11:53:56 JAN 12, 2001

Spurious RF Conducted Emissions, High

MKR 4.965 GHz

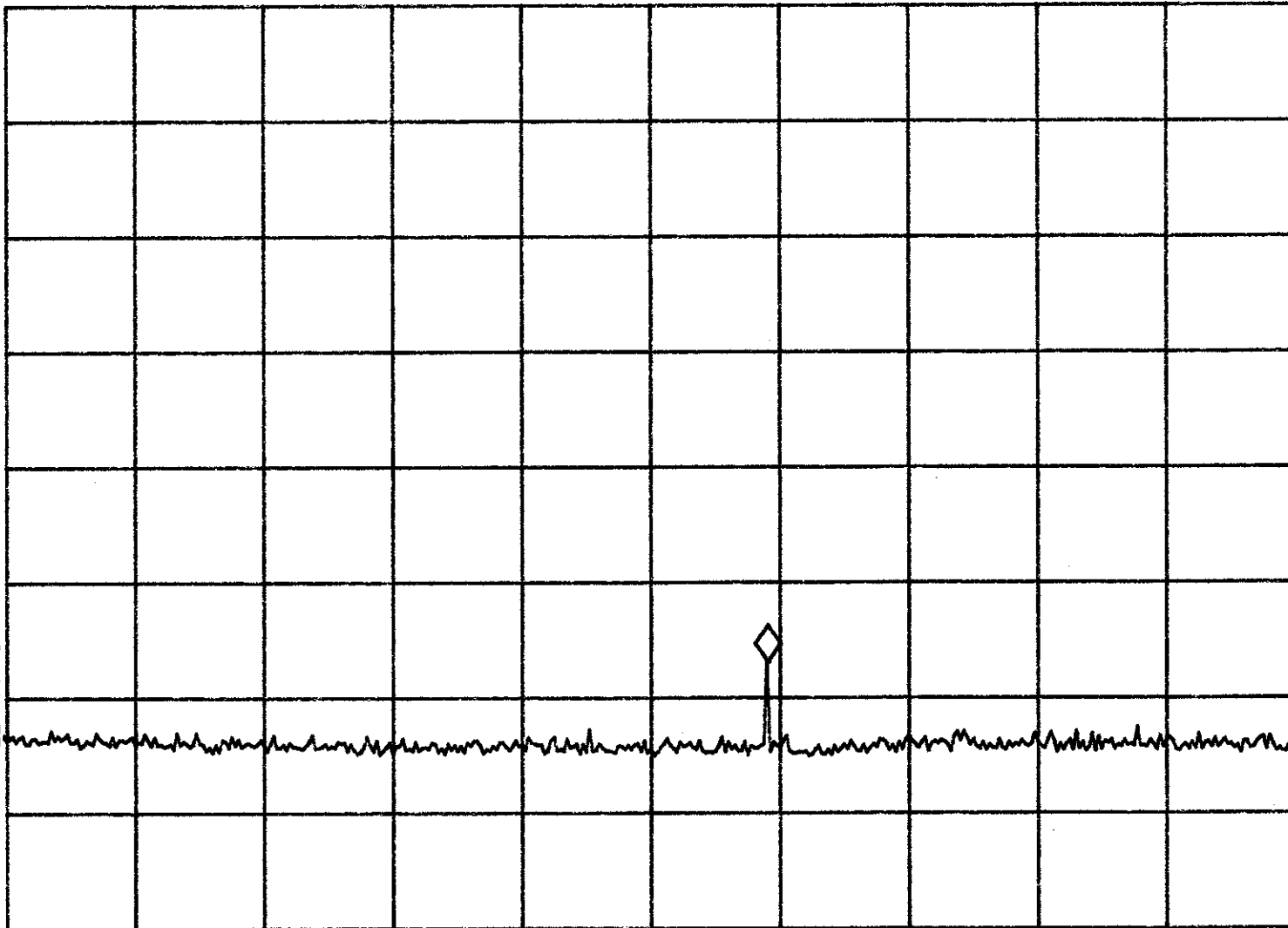
REF 107.0 dB μ V #AT 20 dB

50.07 dB μ V

No user
Menu

PEAK
LOG
10
dB/

VA SB
SC FC
CORR



START 2.899 GHz

STOP 6.400 GHz

#RES BW 100 kHz

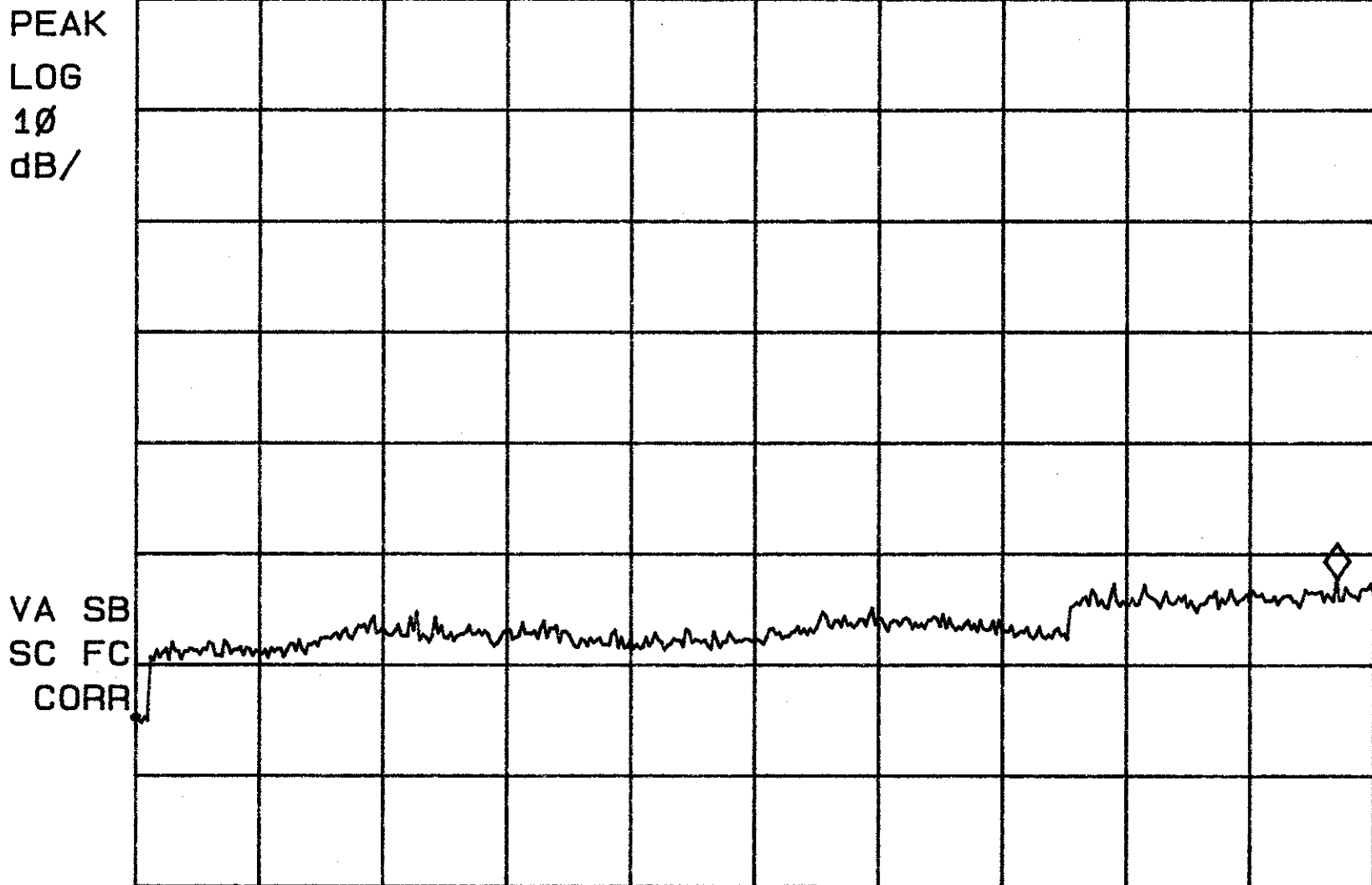
#VBW 100 kHz

SWP 1.05 sec

11:56:17 JAN 12, 2001

Spurious RF Conducted Emissions, High MKR 14.742 GHz
REF 107.0 dBμV #AT 20 dB 54.75 dBμV

No user
Menu

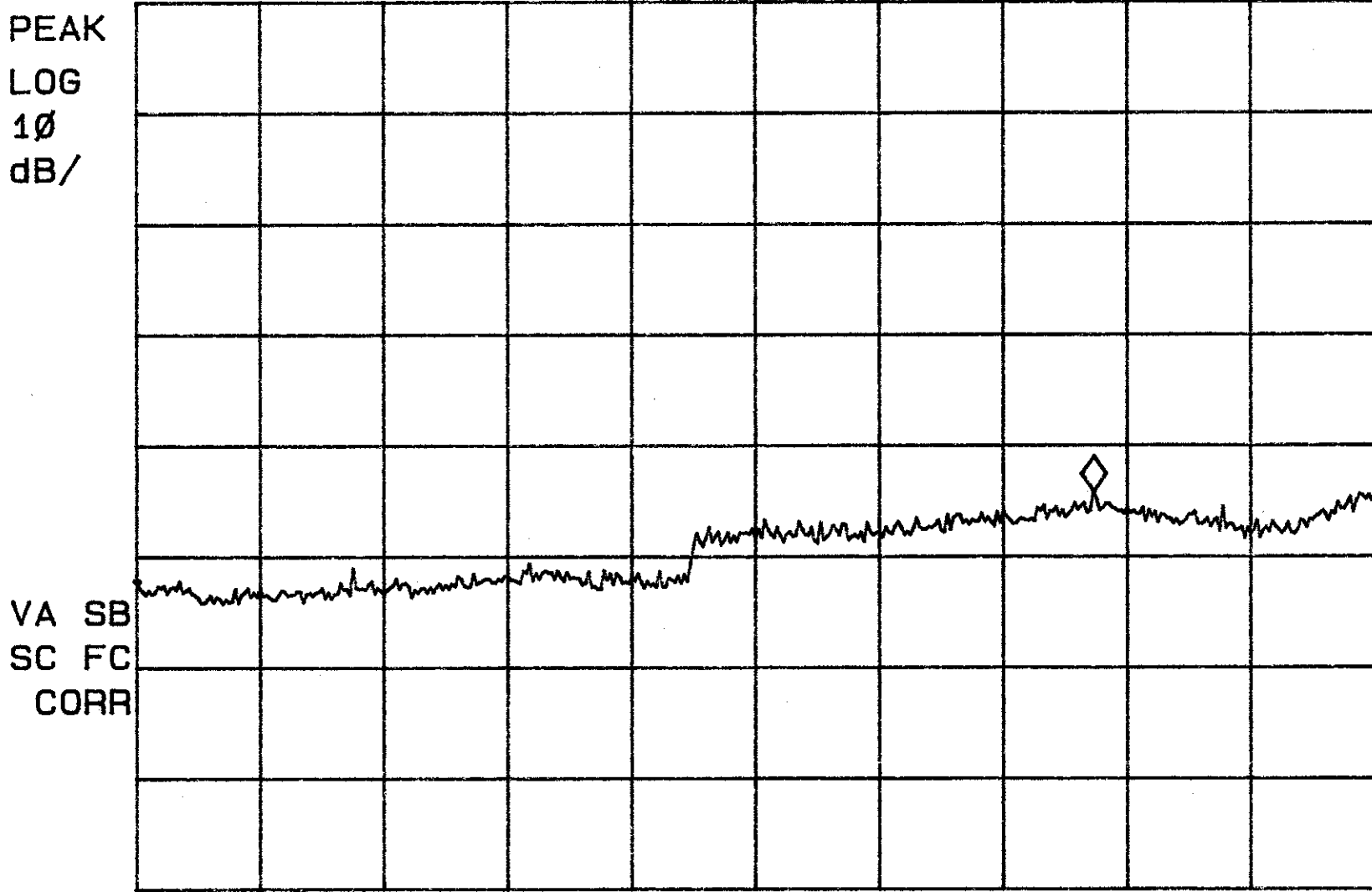


START 6.399 GHz STOP 15.000 GHz
#RES BW 100 kHz #VBW 100 kHz SWP 2.58 sec

11:58:56 JAN 12, 2001

Spurious RF Conducted Emissions, High MKR 22.72 GHz
REF 107.0 dBμV #AT 20 dB 62.81 dBμV

No user
Menu



START 15.00 GHz STOP 25.00 GHz
#RES BW 100 kHz #VBW 100 kHz SWP 3.00 sec