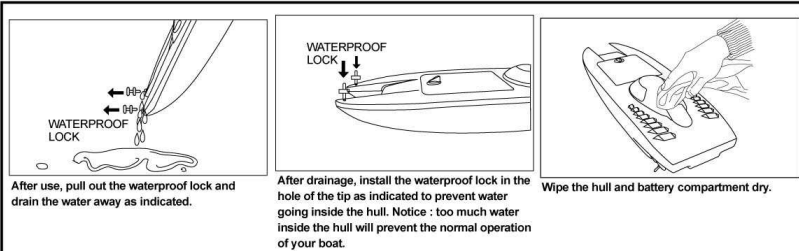


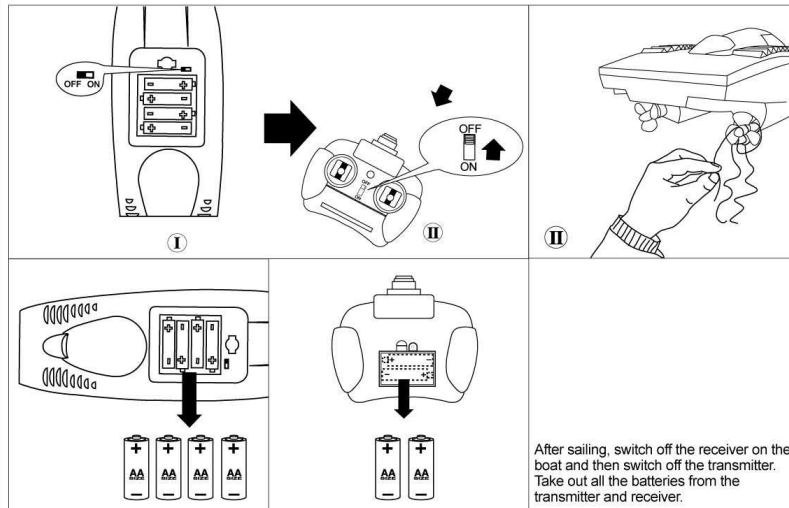
# R/C SPEED BOAT INSTRUCTION MANUAL

ITEM NO.9310



### IMPORTANT NOTES:

Turn off the switch of the boat before trying to clean things attached to the propeller.



### IMPORTANT NOTES:

- BEFORE USING THIS PRODUCT, YOU MUST INSERT THE CORRECT BATTERIES IN THE CORRECT POLARITY AND THEN CLOSE THE BATTERY COMPARTMENT COVER.
- AFTER USING THIS PRODUCT, PLEASE WIPE THE BATTERY COMPARTMENT COVER DRY BEFORE OPEN IT TO AVOID WATER COMES INTO THE BATTERY COMPARTMENT.
- WHEN YOU ARE NOT USING THIS PRODUCT, PLEASE REMOVE ALL BATTERIES FROM THE BATTERY COMPARTMENT AND USE A CLEAN DRY CLOTH TO WIPE THE BATTERY COMPARTMENT AND CONDUCTOR DRY.
- THE TOY IS TO BE OPERATED IN WATER WHEN FULLY ASSEMBLED IN ACCORDANCE WITH THE INSTRUCTION.

### FCC Note:

The manufacturer is not responsible for any radio or TV interference caused by unauthorized modifications to this equipment. Such modifications could void the user's authority to operate the equipment. IF YOU FIND ANY FUNCTIONAL PROBLEMS IN OPERATING THIS TOY, PLEASE READ CAREFULLY THE INSTRUCTION, SHEETS AND/OR E-MAIL US AT THE FOLLOWING ADDRESS: [info@golden-bright.com](mailto:info@golden-bright.com)

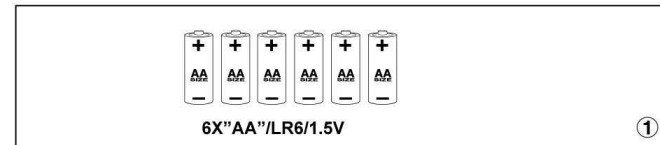


In order to get the best performance of your speed boat, please read carefully this instruction before use.

### PREPARATION BEFORE USE:

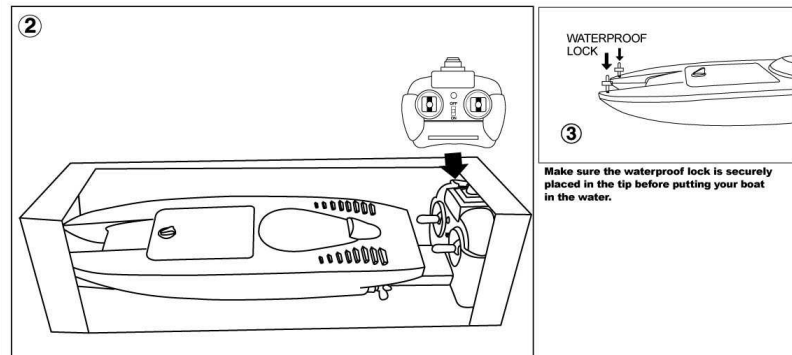
A) Make sure you have the following necessities(Fig.1):

- 6 pcs of "AA"size Alkaline Batteries,
- Cross-head screwdriver – 1 pc



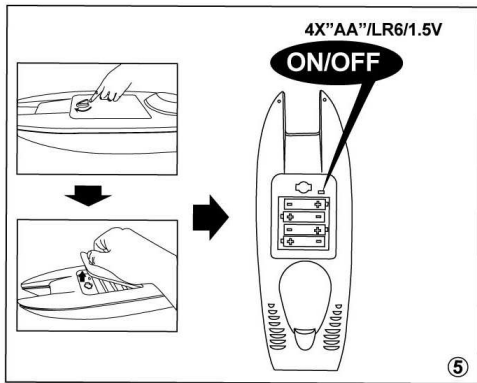
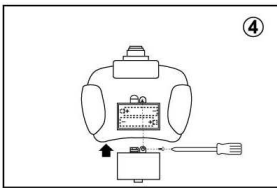
B) Follow step by step from figure 2 to figure 7.

**IMPORTANT NOTE:** Do not mix new and used batteries in your battery compartment.



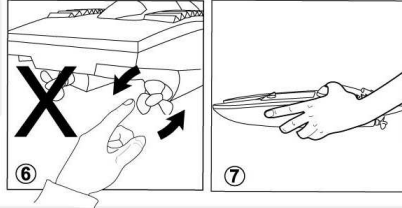
NOTE: This equipment has been tested and found to comply with the limits for a Class B digital device, pursuant to Part 15 of the FCC Rules. These limits are designed to provide reasonable protection against harmful interference in a residential installation. This equipment generates, uses and can radiate radio frequency energy and, if not installed and used in accordance with the instructions, may cause harmful interference to radio communications. However, there is no guarantee that interference will not occur in a particular installation. If this equipment does cause harmful interference to radio or television reception, which can be determined by turning the equipment off and on, the user is encouraged to try to correct the interference by one or more of the following measures:

- Reorient or relocate the receiving antenna.
  - Increase the separation between the equipment and receiver.
  - Connect the equipment into an outlet on a circuit different from that to which the receiver is connected.
  - Consult the dealer or an experienced radio/TV technician for help.
- Changes or modifications not expressly approved by the party responsible for compliance could void the user's authority to operate the equipment.



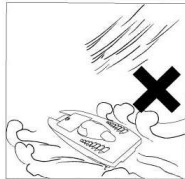
**CAUTIONS FOR SAFETY**

Never use your finger to touch the propeller to avoid hurting your fingers (fig 6) correct way to hold the boat (fig 7)

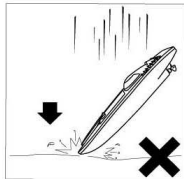


**CAUTIONS FOR SAFETY**

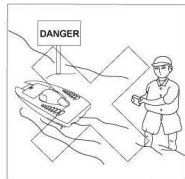
Do not sail the boat beyond 120feet from yourself.  
Do not operate this boat in sea water for best performance.



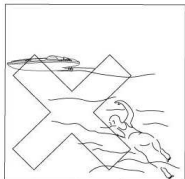
Do not operate your boat under windy and stormy weather.



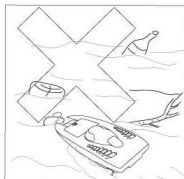
Do not drop your boat onto the ground.



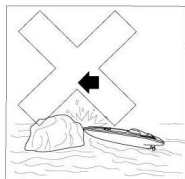
Do not operate your boat in prohibited area.



Never swim to retrieve your boat.



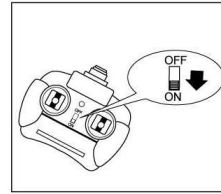
Do not sail your boat in dirty water.



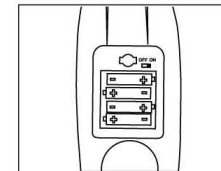
Do not try to crash your boat to any object in the water.

**BE READY FOR SAILING**

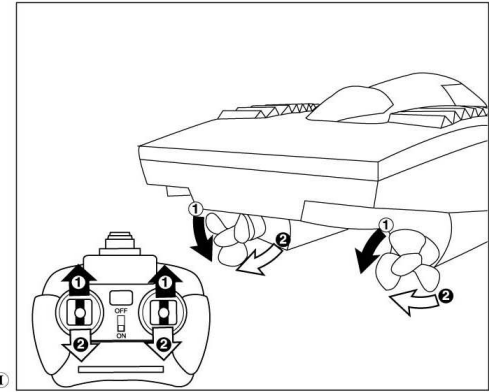
In order to avoid radio interferences to your product, before sailing, ask anyone in your vicinity to see if they are running the same frequency as yours.



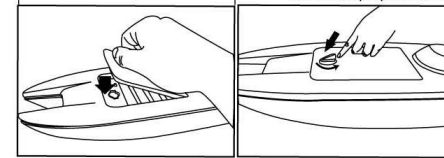
switch on the transmitter.



Switch on speed boat



VII Switch on the transmitter.  
VIII Check propeller direction matches with the transmitter's input.



**CONTROL INSTRUCTION FOR A VOYAGE**

