

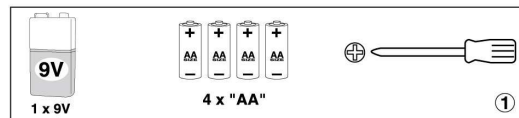
R/C SAILING BOAT INSTRUCTION MANUAL

ITEM NO. 9305

In order to get the best performance of your sailing boat, please read carefully this instruction before use.

PREPARATION BEFORE USE:

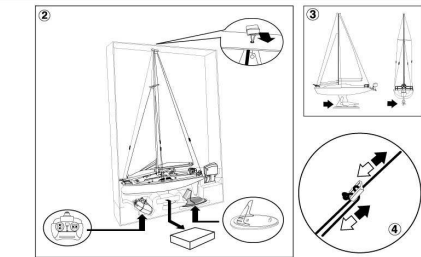
- A) Make sure you have the following necessities (Fig.1):
 - 1) One 9V battery
 - 2) 4 pcs of "AA"size Alkaline Batteries,
 - 3) Cross-head screwdriver - 1 pc



B) Follow step by step from figure 2 to figure 7.

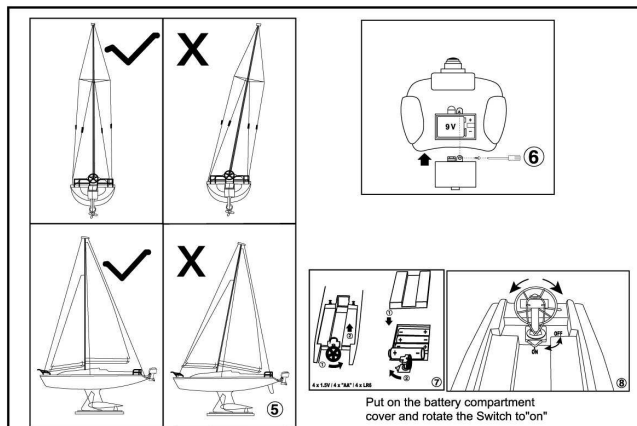
IMPORTANT NOTE: Do not mix new and used batteries in your battery compartment.

DO NOT MIX ALKALINE, STANDARD (CARBON-ZINC) OR RECHARGEABLE (NICKEL-CADMIUM) BATTERIES



NOTE:
This equipment has been tested and found to comply with the limits for a Class B digital device, pursuant to Part 15 of the FCC Rules. These limits are designed to provide reasonable protection against harmful interference in a residential installation. This equipment generates, uses and can radiate radio frequency energy and, if not installed and used in accordance with the instructions, may cause harmful interference to radio communications. However, there is no guarantee that interference will not occur in a particular installation. If this equipment does cause harmful interference to radio or television reception, which can be determined by turning the equipment off and on, the user is encouraged to try to correct the interference by one or more of the following measures:
-Reorient or relocate the receiving antenna.
-Increase the separation between the equipment and receiver.
-Connect the equipment into an outlet on a circuit different from that to which the receiver is connected.
-Consult the dealer or an experienced radio/TV technician for help.

1

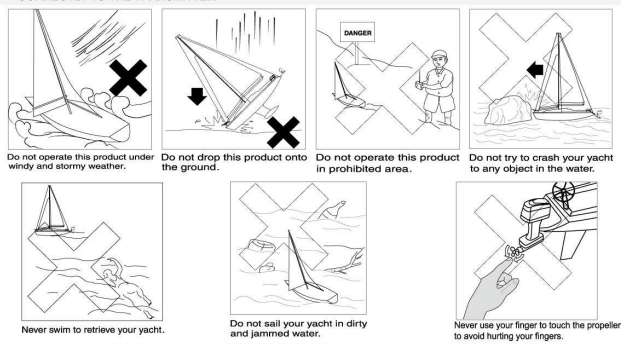


CAUTIONS FOR SAFETY

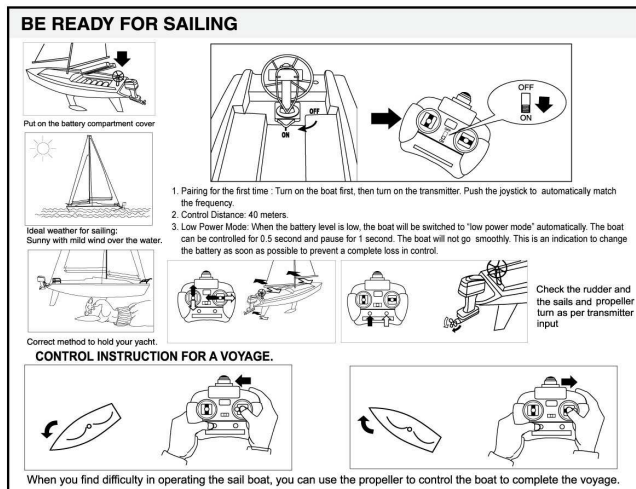
Do not sail the yacht beyond 120 feet /40 meters from yourself.

Do not operate this yacht in sea water for best performance.

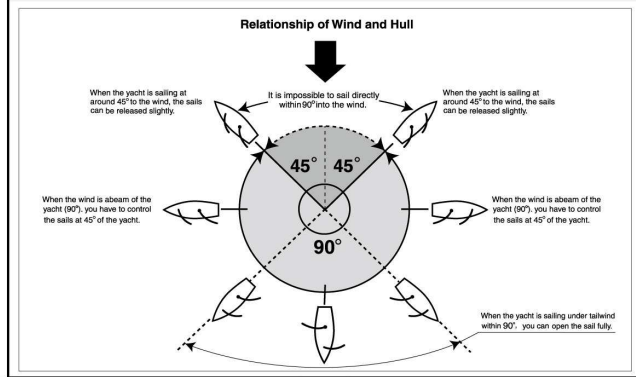
ATTENTION!
WHEN THE TRANSMITTER (CONTROLLER) IS TOO CLOSE (WITHIN 3 FEET/1 METER) TO THE RECEIVER (BOAT), IT IS NORMAL THAT THE RECEIVER DOES NOT RESPOND CORRECTLY TO THE TRANSMITTER



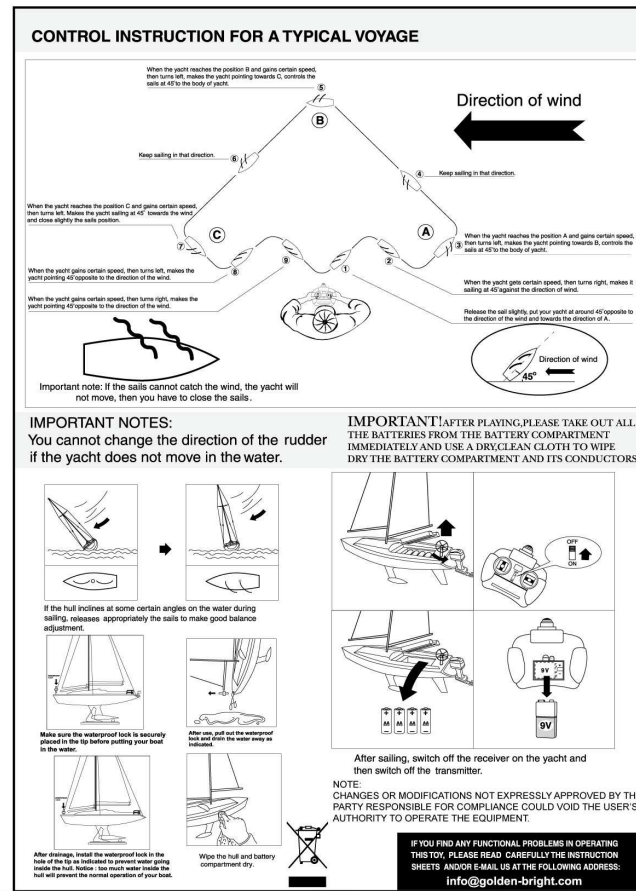
2



POSITION OF THE SAILS UNDER 360° WIND



3



4

IF YOU FIND ANY FUNCTIONAL PROBLEMS IN OPERATING THIS TOY, PLEASE READ CAREFULLY THE INSTRUCTION SHEETS AND/OR E-MAIL US AT THE FOLLOWING ADDRESS: info@golden-bright.com