

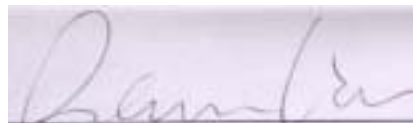
February 23, 2004

Dear Sir,

We declare that all of the following EMI suppression parts added on EUT, FCC ID: O2PMILLENNIUM-P4, will be put on mass production product.

- (A) Add conductive cushions to the frame of the case shown as photo 3 and 8.
- (B) Mount one suppression core on RS 232 data cable shown as photo 8.
- (C) Shield and ground USB data cables and audio cables; mount suppression cores to these cables shown as photo 8.
- (D) Mount one suppression core on PS2 data cable shown as photo 8.

Sincerely ,

A rectangular area containing a handwritten signature in dark ink, which appears to read "Sam Lin".

SAM LIN / PRESIDENT

PHOTO. 3. EUT INSIDE VIEW



PHOTO. 4. EUT INSIDE VIEW



PHOTO. 5. EUT INSIDE VIEW



PHOTO. 6. EUT INSIDE VIEW



PHOTO. 7. EUT INSIDE VIEW



PHOTO. 8. EUT INSIDE VIEW



PHOTO. 9. EUT COMPONENT SIDE VIEW (MAIN BOARD)

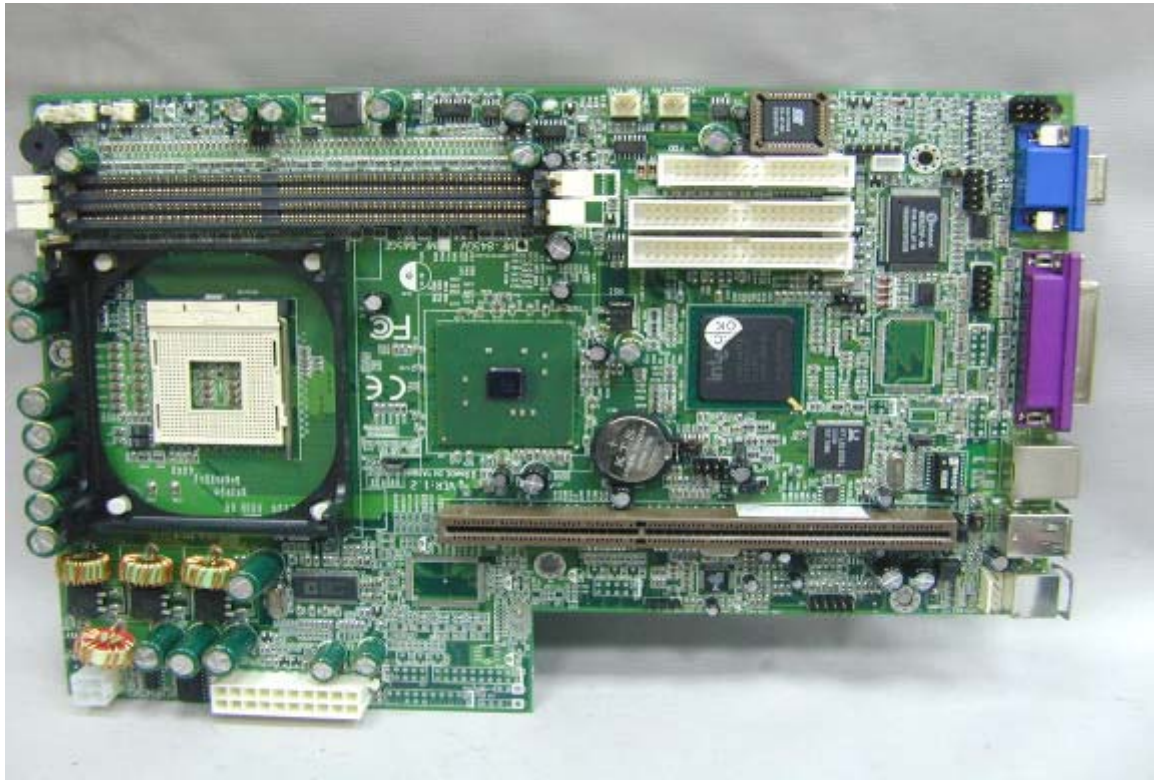


PHOTO. 10. EUT SOLDERING SIDE VIEW (MAIN BOARD)

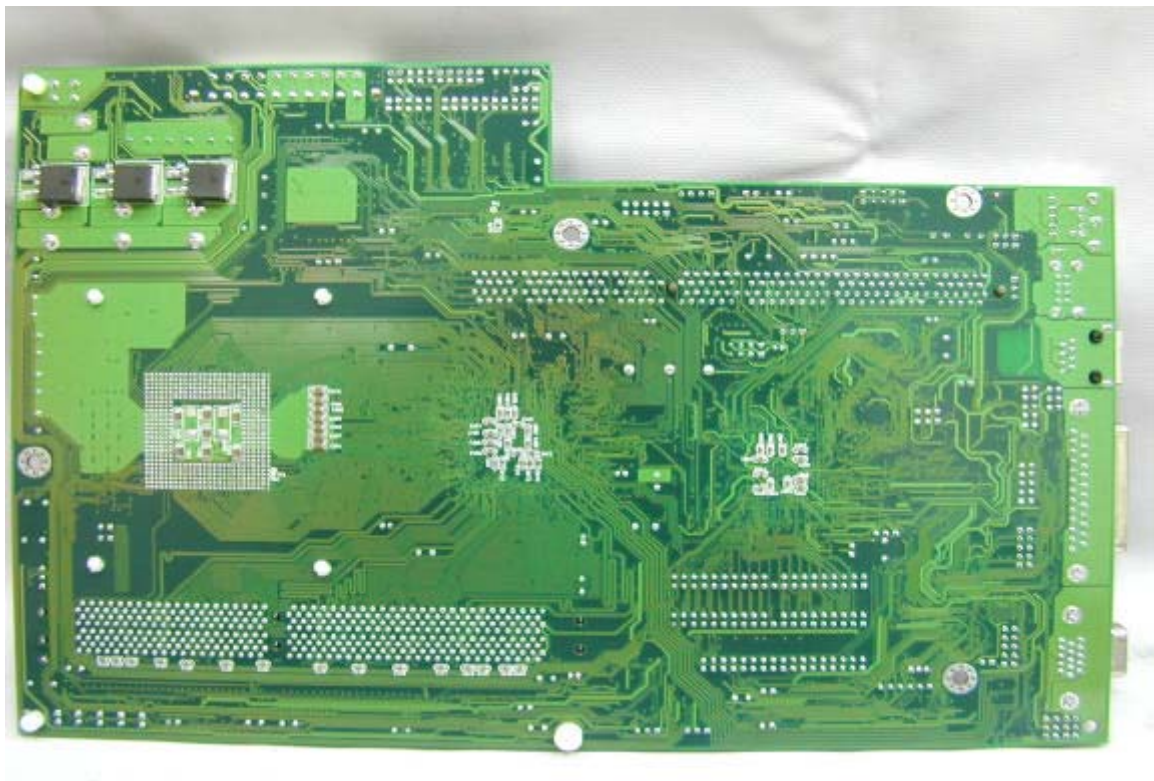


PHOTO. 11. EUT I/O PORT VIEW (MAIN BOARD)

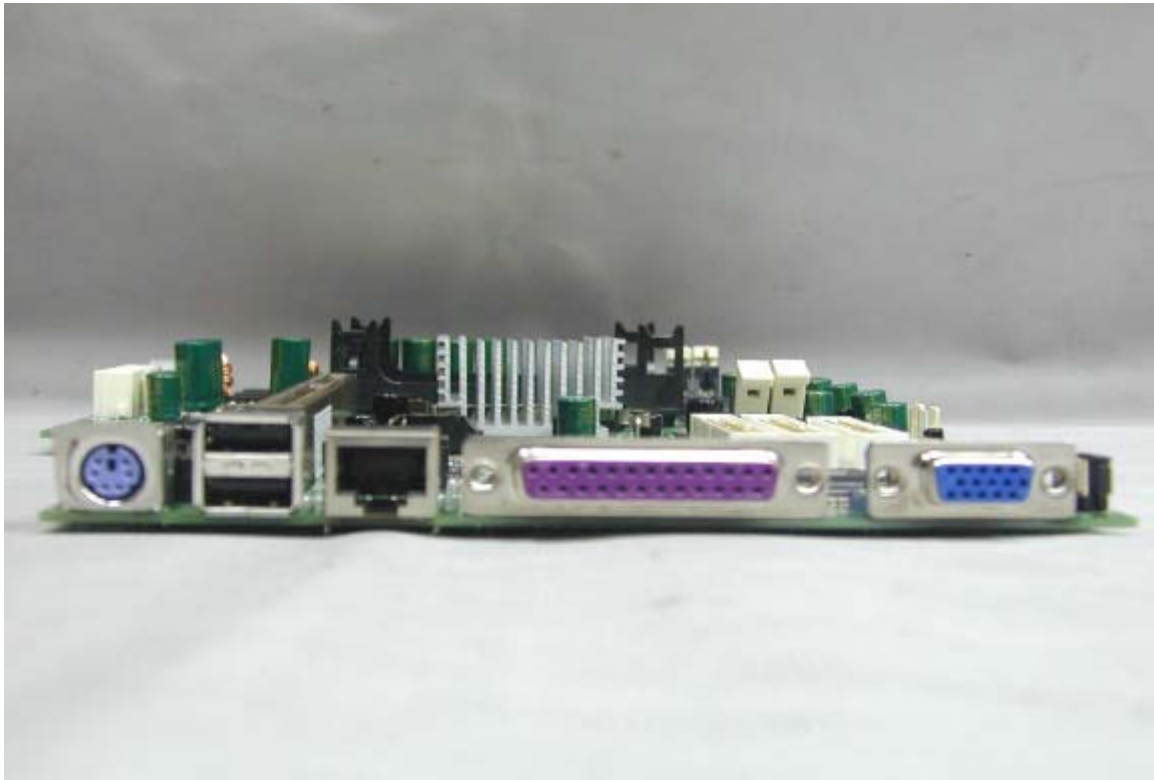


PHOTO. 12. EUT COMPONENT SIDE VIEW (MODEM CARD)



PHOTO. 13. EUT SOLDERING SIDE VIEW (MODEM CARD)



PHOTO. 14. EUT I/O PORT VIEW (MODEM CARD)

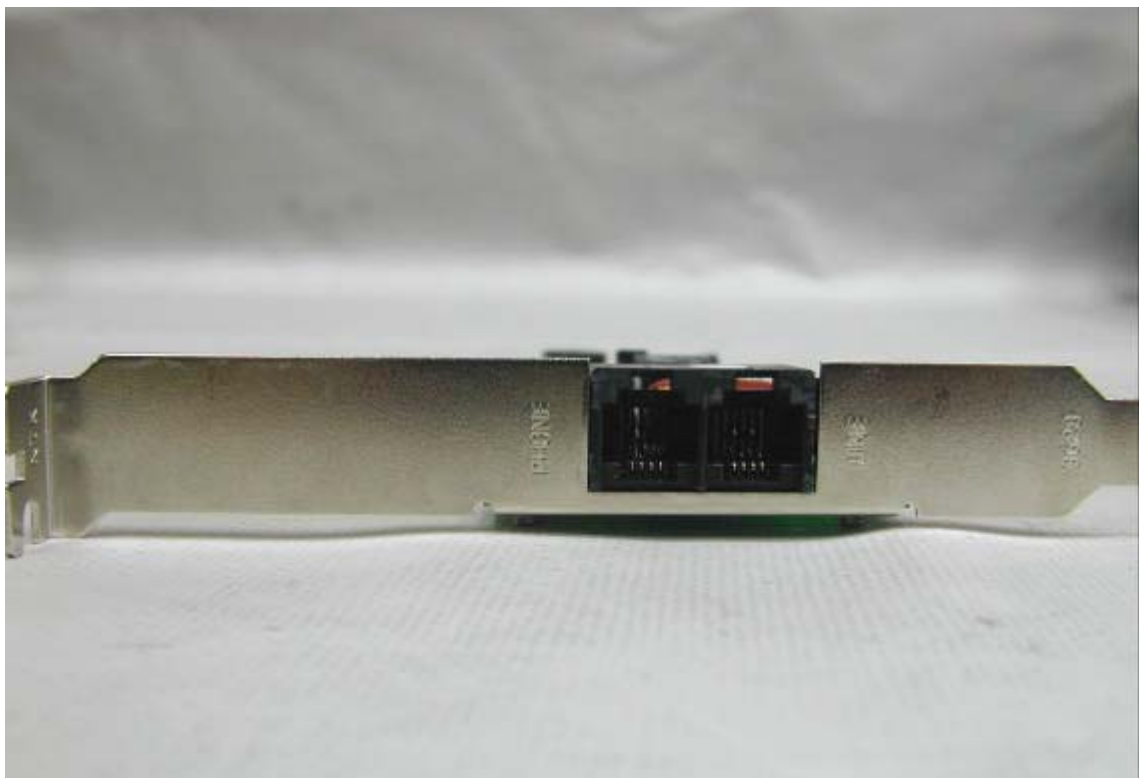


PHOTO. 15. EUT COMPONENT SIDE VIEW (TELEPHONE CARD)



PHOTO. 16. EUT SOLDERING SIDE VIEW (TELEPHONE CARD)

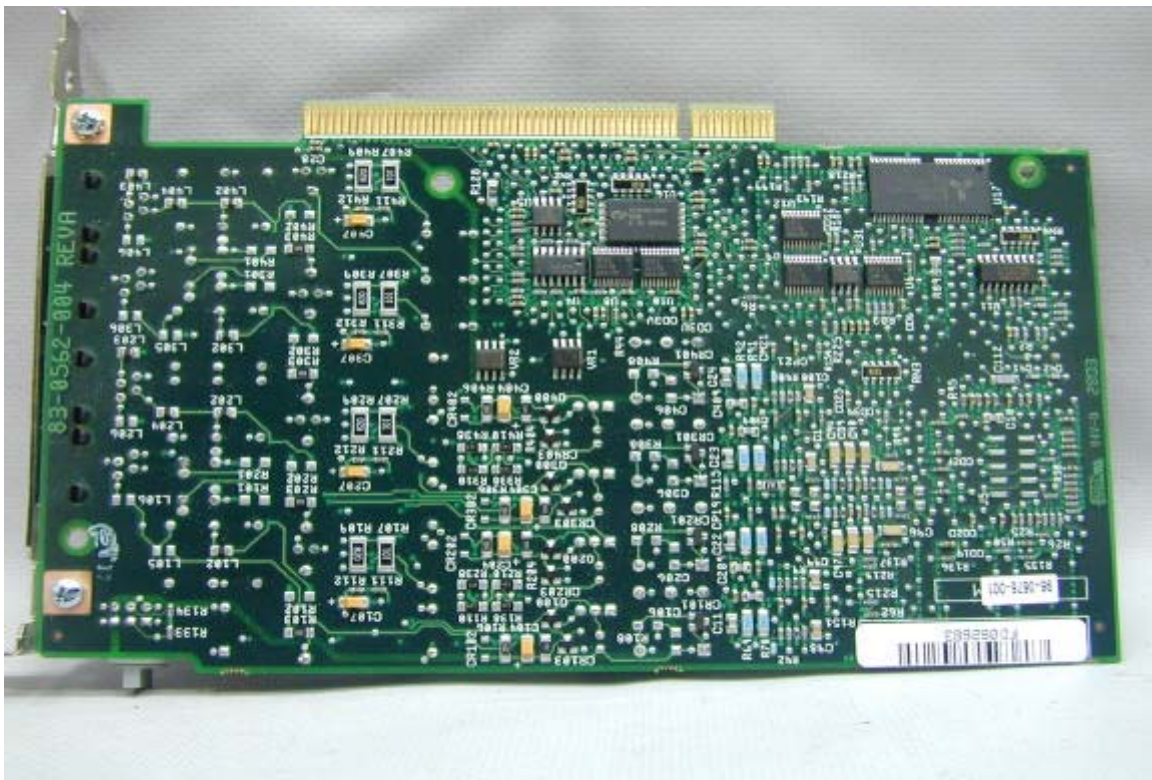


PHOTO. 17. EUT I/O PORT VIEW (TELEPHONE CARD)



PHOTO. 18. EUT COMPONENT SIDE VIEW (PCI CARD)



PHOTO. 19. EUT SOLDERING SIDE VIEW (PCI CARD)

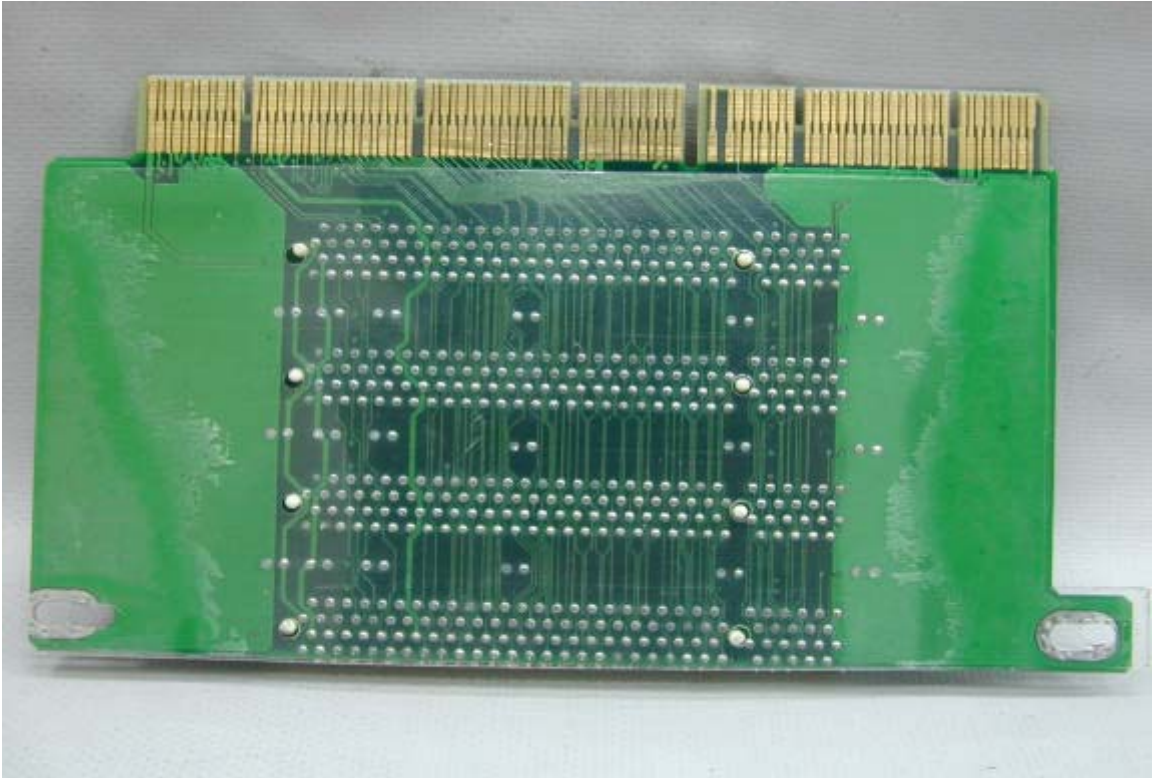


PHOTO. 20. EUT COMPONENT SIDE VIEW (CPU)



PHOTO. 21. EUT SOLDERING SIDE VIEW (CPU)

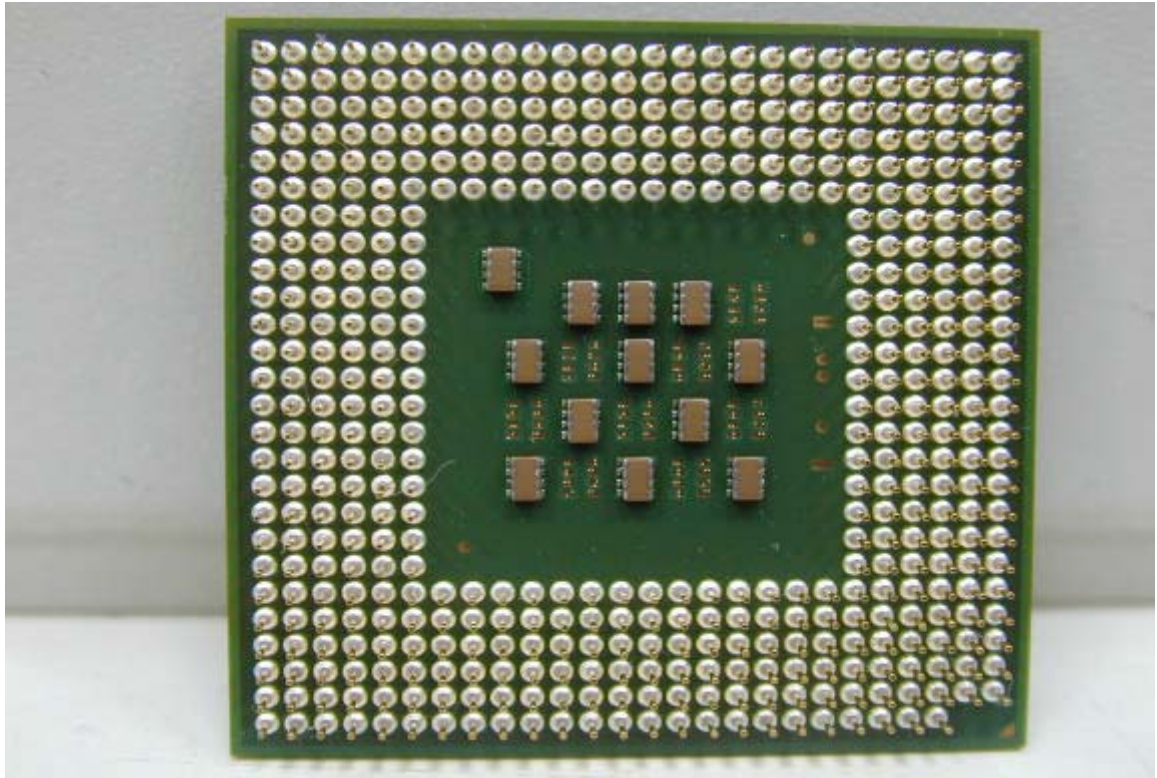


PHOTO. 22. EUT FRONT VIEW (FLOPPY)



PHOTO. 23. EUT REAR VIEW (FLOPPY)



PHOTO. 24. EUT FRONT VIEW (HARD DISK)



PHOTO. 25. EUT REAR VIEW (HARD DISK)



PHOTO. 26. EUT COMPONENT SIDE VIEW (RAM)



PHOTO. 27. EUT COMPONENT SIDE VIEW (RAM)



PHOTO. 28. POWER SUPPLY FRONT VIEW



PHOTO. 29. POWER SUPPLY REAR VIEW



PHOTO. 30. POWER SUPPLY LABEL VIEW

CWT CHANNEL WELL TECHNOLOGY CO.,LTD.
MODEL: CWT-235ATX (235W MAX)

| | | | | | | | | | |
|-----------------------------|---------------------|------------------|-----------|-----------|------------|----------------------|------------|-------------|-----------|
| Vac~ INPUT | VOLTAGE 115/230V | CURRENT 7A/4A | | | | FREQUENCY 60/50Hz | | | |
| Vdc --- MAX DC OUTPUT | +3.3 14A | +5 22A | +12 8A | -12 1A | -5 0.5A | +5SB 1.5A | BLK COM | GRN P-ON | GRY PG |
| PEAK OUTPUT | TOTAL 125W | 8A | 1A | 0.5A | 1.5A | RETURN | REMOTE | POK | |

WARNING:
 HAZARDOUS VOLTAGES CONTAINED WITHIN THIS POWER SUPPLY,
 NOT USER SERVICEABLE. RETURN TO SERVICE CENTER FOR REPAIR.

WARNUNG:
 NETZTEIL UNTER GEFAHRLICHER SPANNUNG. NICHT VOM BENUTZER
 ZU REPARIEREN. ZUR REPARATUR AN KUNDENDIENST ZURUCKSENDEN.

D43018
C0562-2

PHOTO. 31. POWER SUPPLY INSIDE VIEW



PHOTO. 32. POWER SUPPLY SOLDERING SIDE VIEW

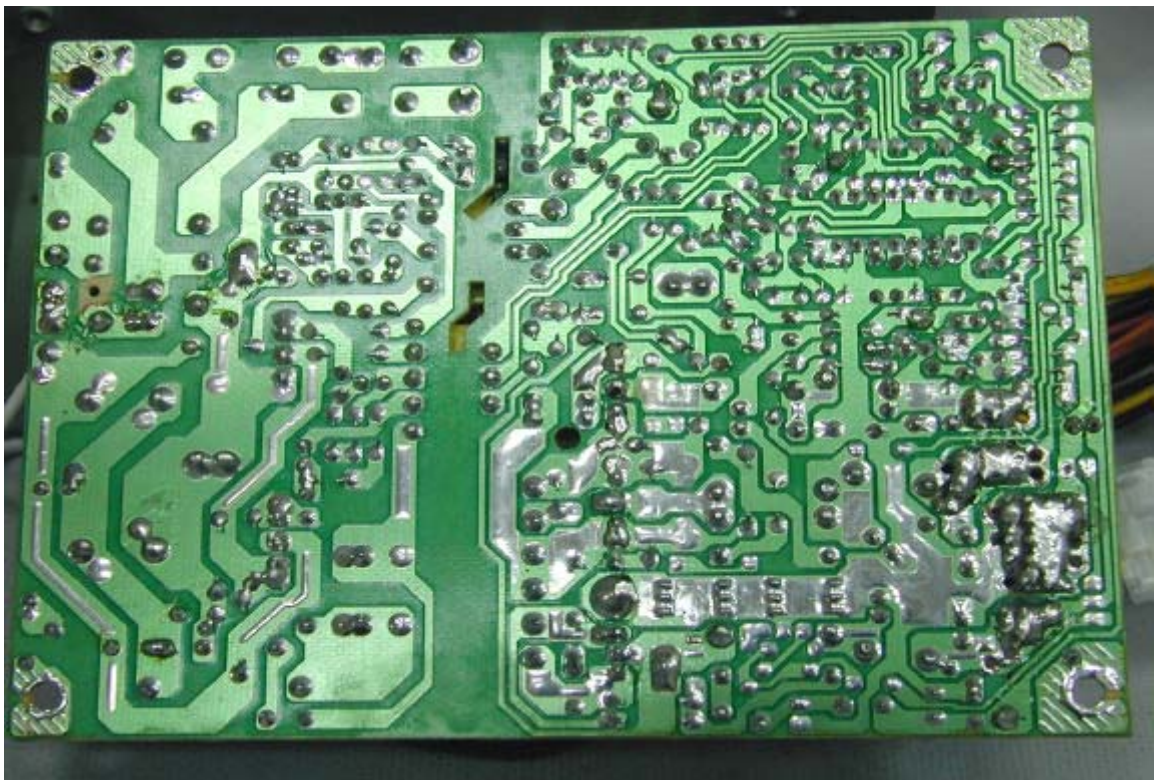


PHOTO. 33. POWER SUPPLY COMPONENT SIDE VIEW

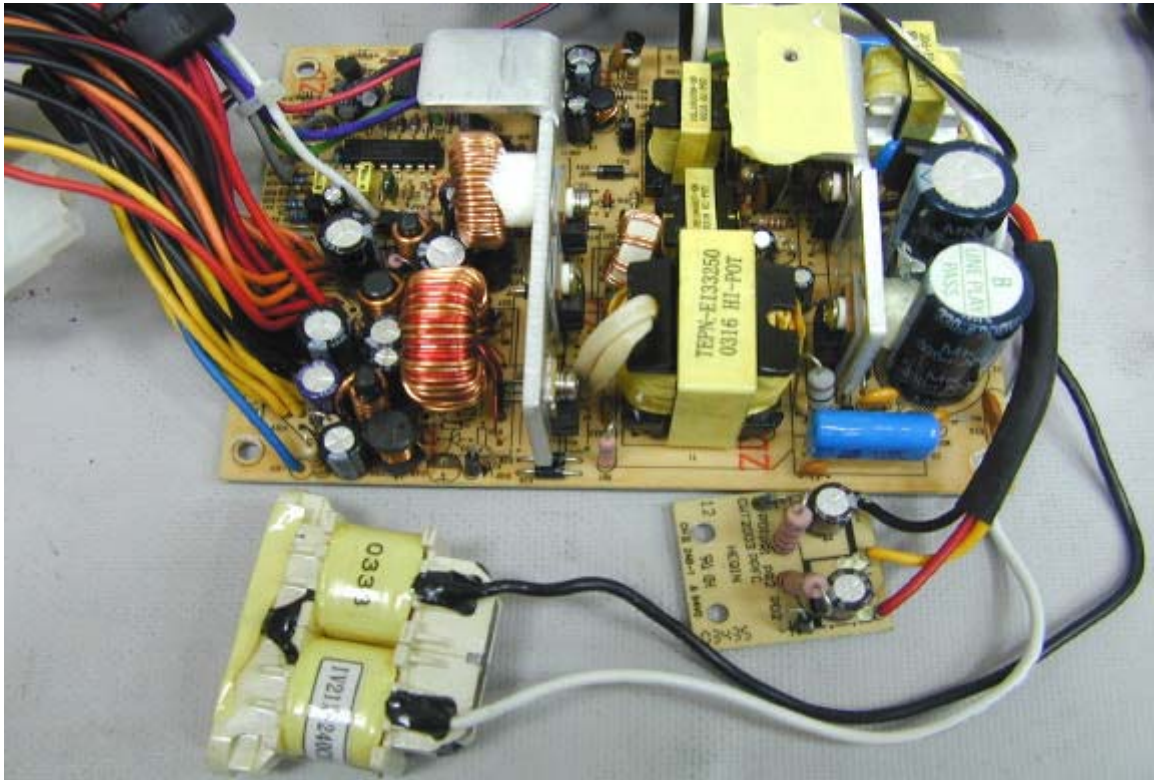


PHOTO. 34. POWER SUPPLY COMPONENT SIDE VIEW

