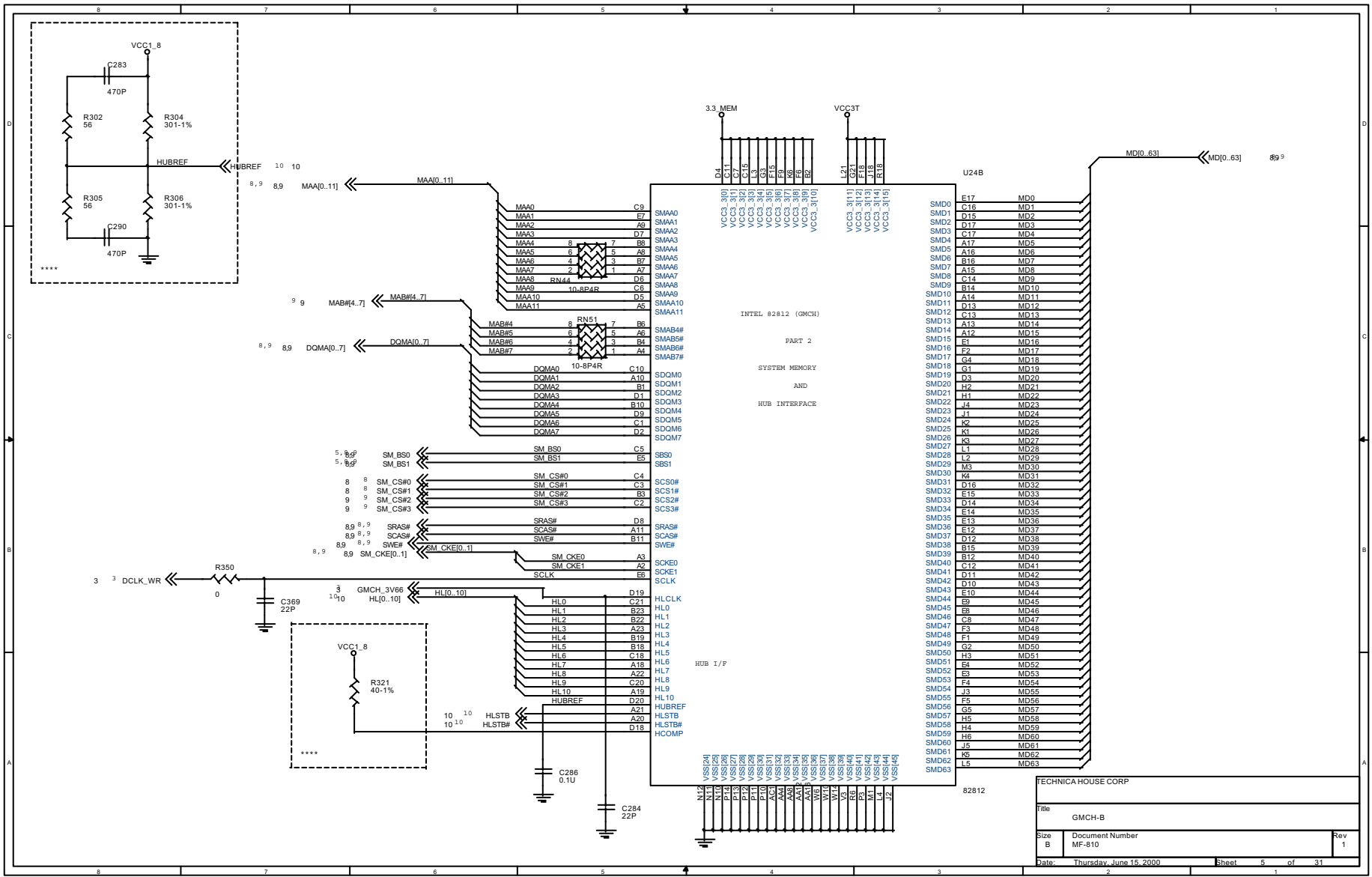
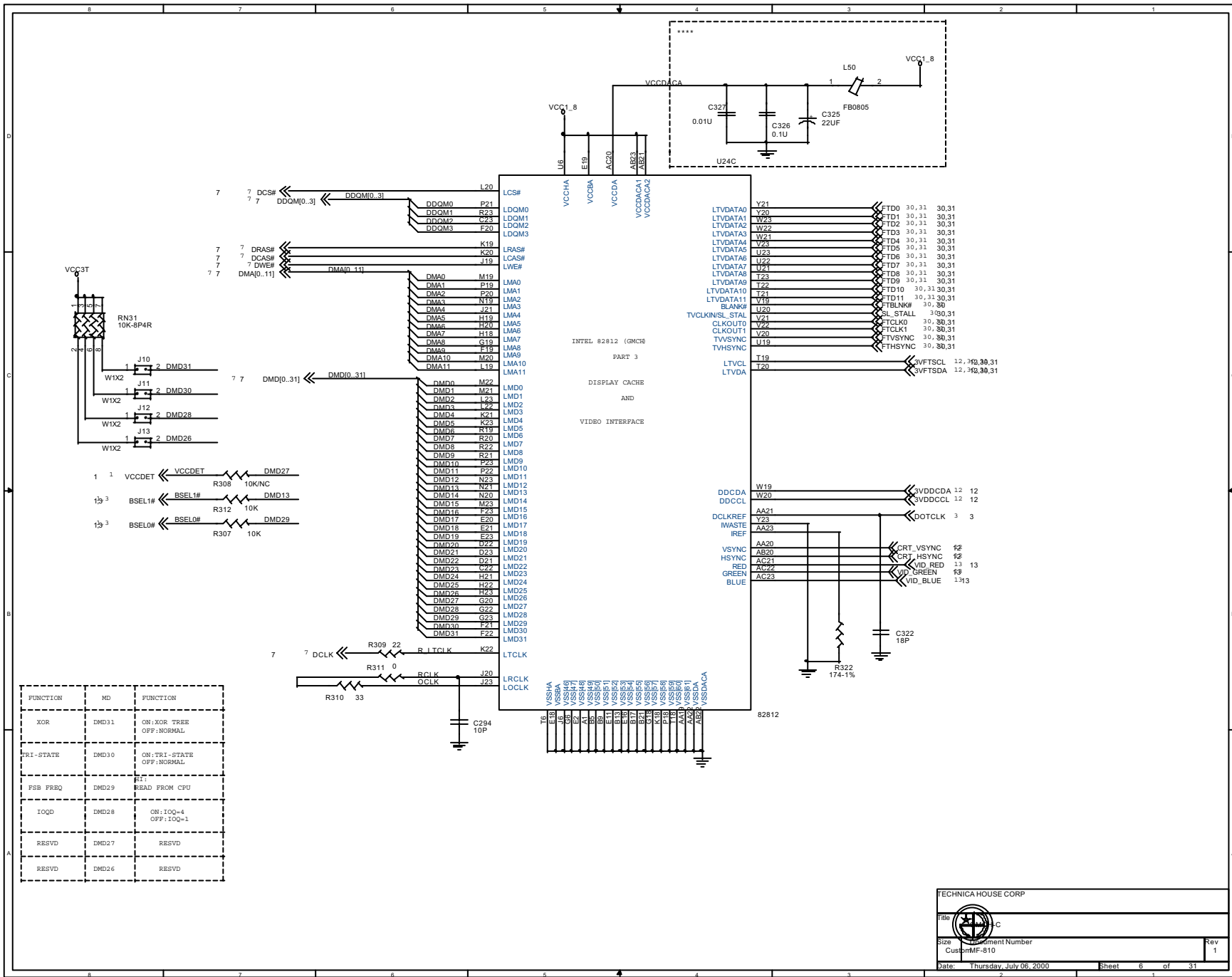


TECHNICA HOUSE CORP		
File GMCH-A		
Size B	Document Number MF-810	Rev 1
Date: Thursday, May 25, 2000	Sheet 4 of 31	




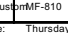




FUNCTION	MD	FUNCTION
XOR	DMD31	ON: XOR TREE OFF: NORMAL
TRI-STATE	DMD30	ON: TRI-STATE OFF: NORMAL
FSB FRBQ	DMD29	READ FROM CPU
IOQD	DMD28	ON: IOQ=4 OFF: IOQ=1
RESVD	DMD27	RESVD
RESVD	DMD26	RESVD

TECHNICA HOUSE CORP

Title:  C

Size:  C

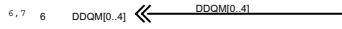
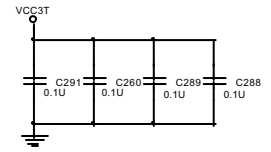
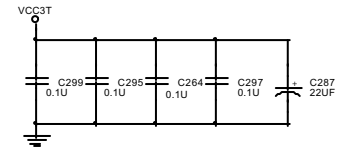
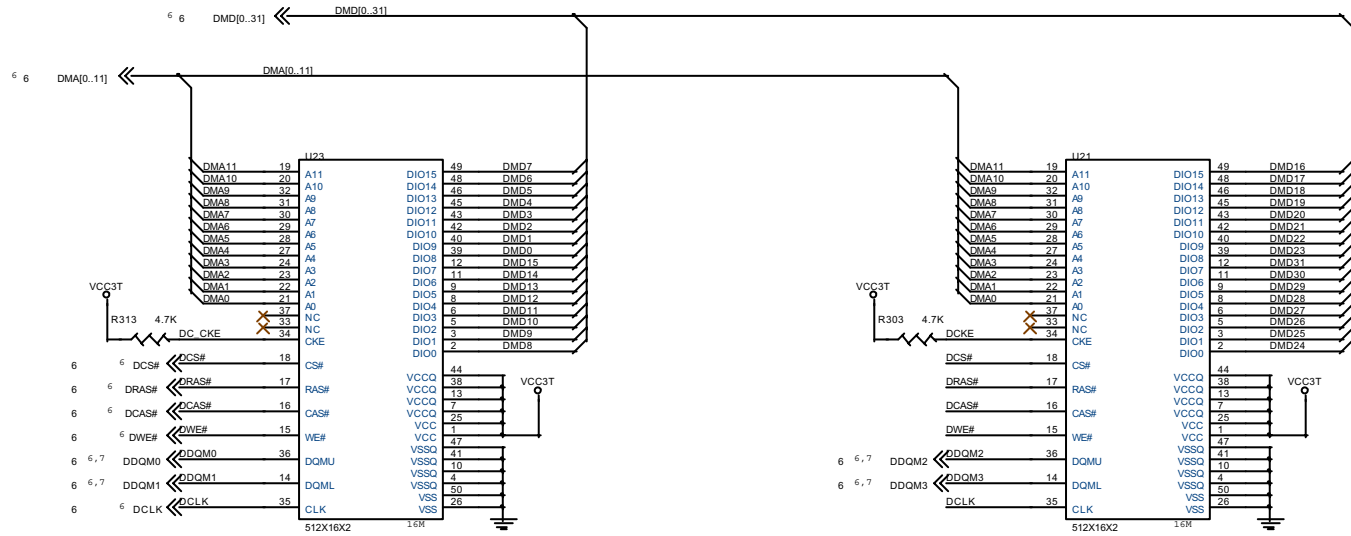
Customer: MF-810

Date: Thursday, July 06, 2000

Sheet: 6 of 31

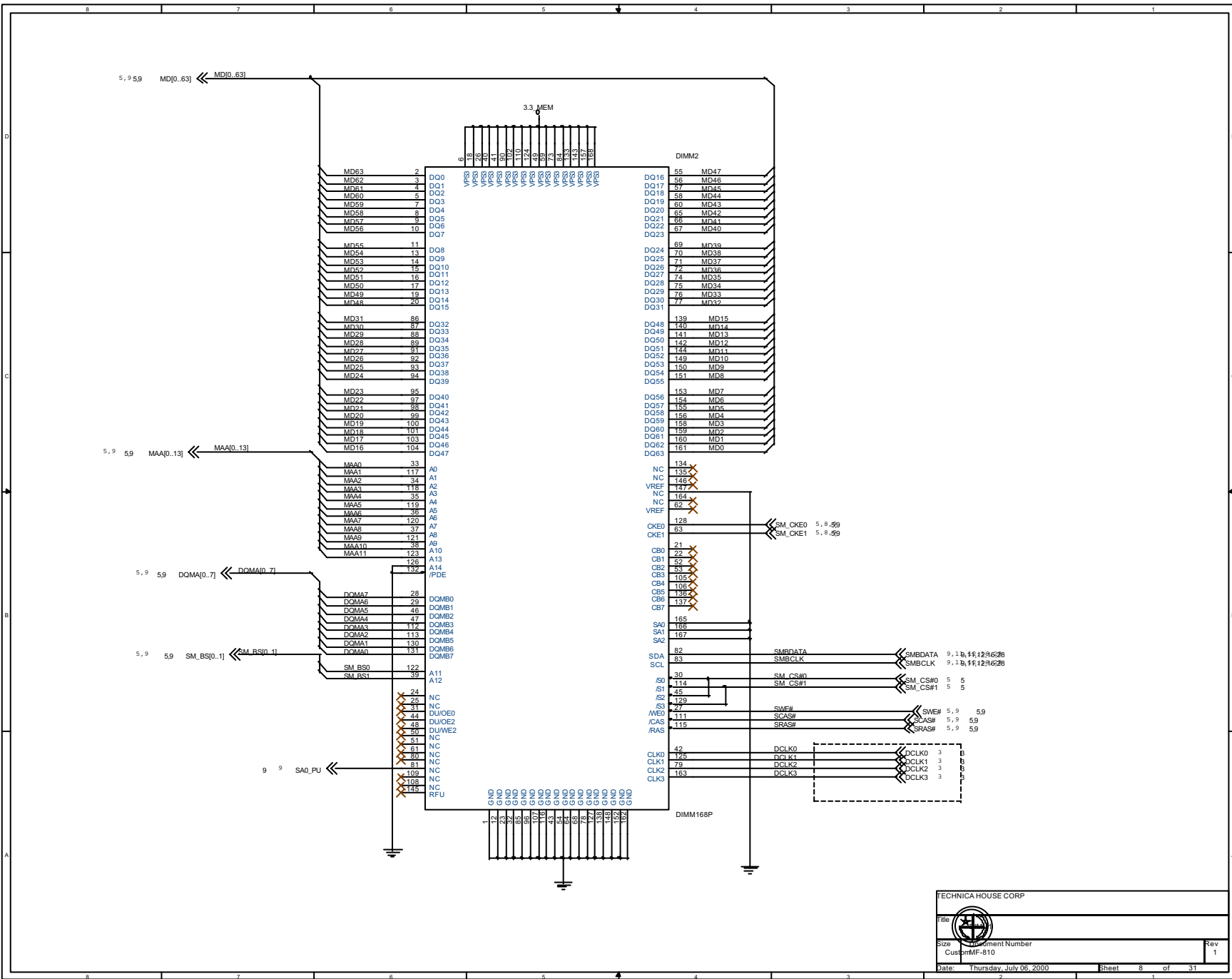
Rev: 1

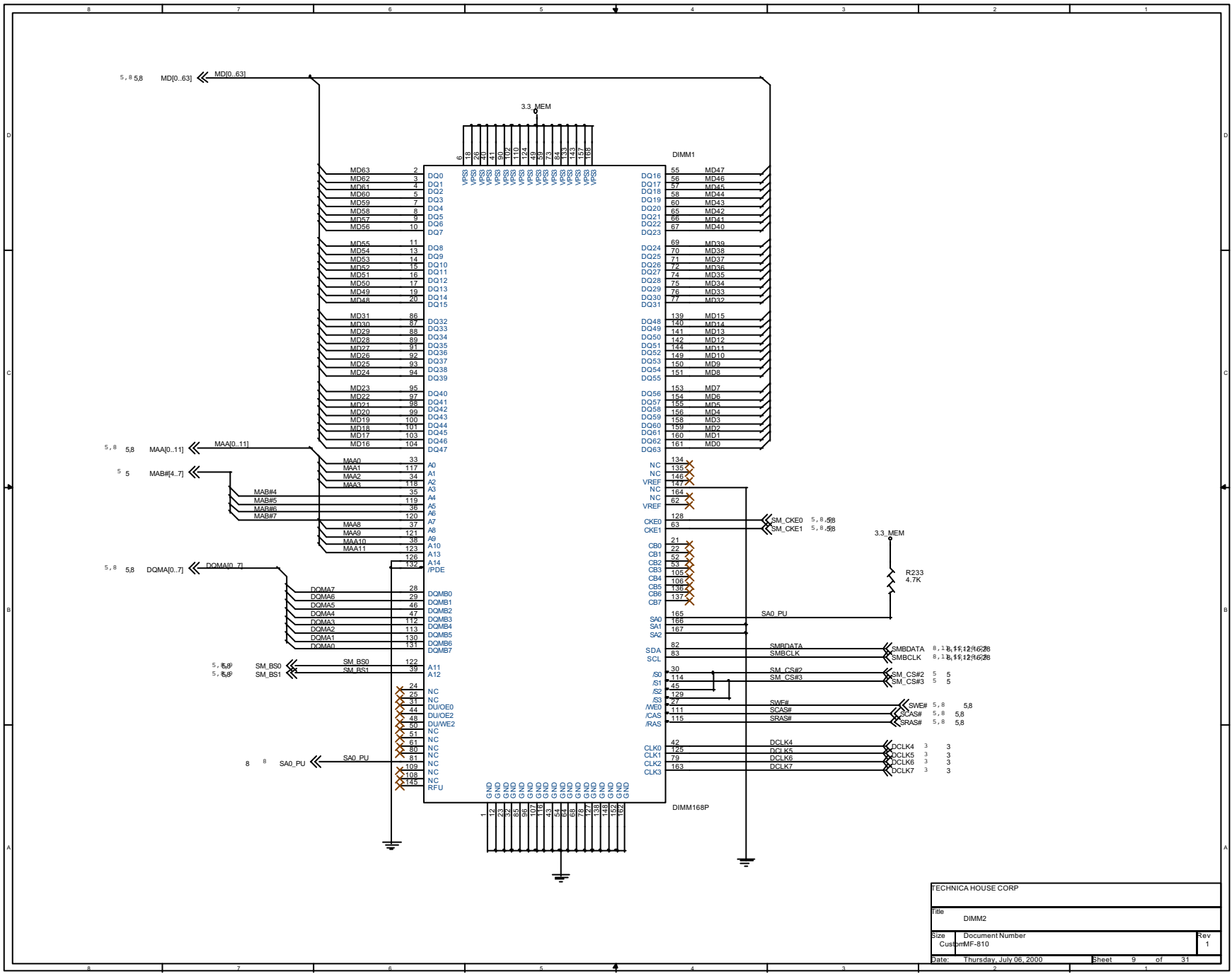
4MBytes SDRAM 16Mbit 512KX16X2



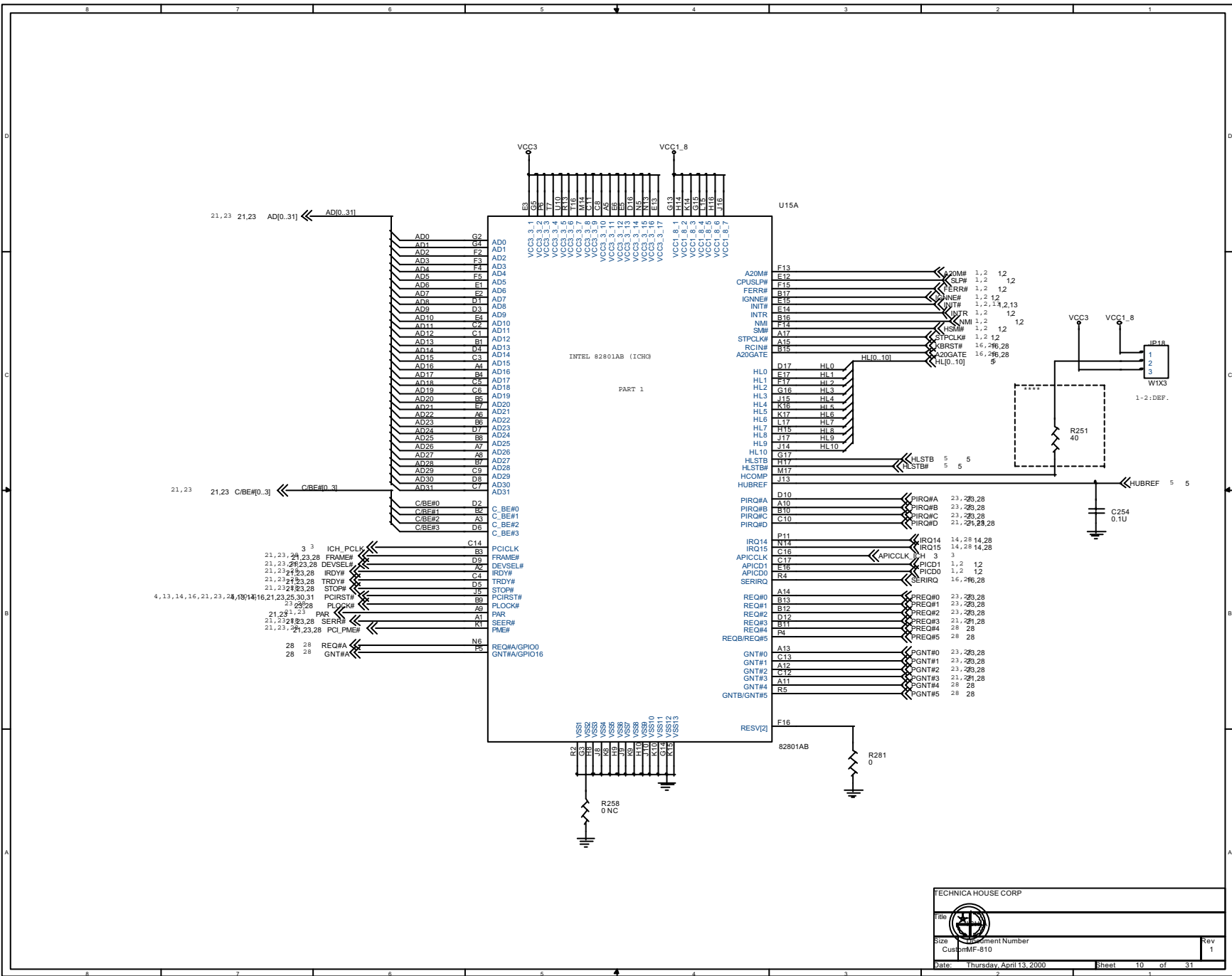
TECHNICA HOUSE CORP		
File: VGA MEMORY		
Size: B	Document Number: MF-810	Rev: 1
Date: Thursday, May 25, 2000		
Sheet: 7		of 31

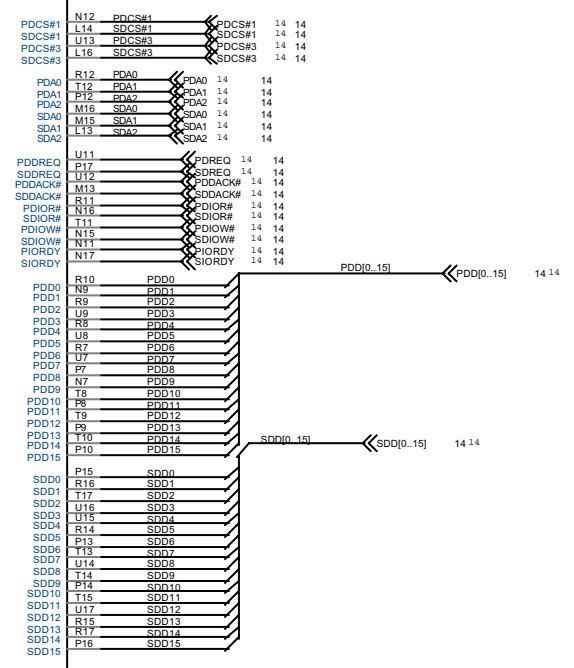
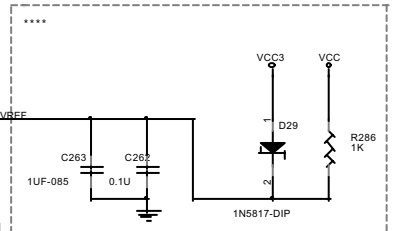
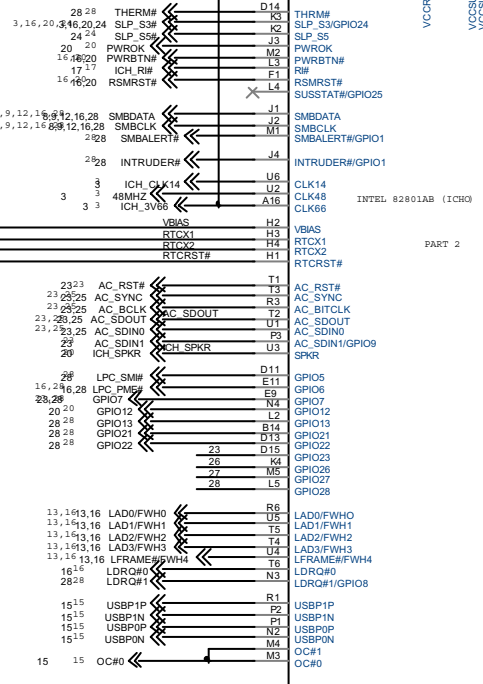
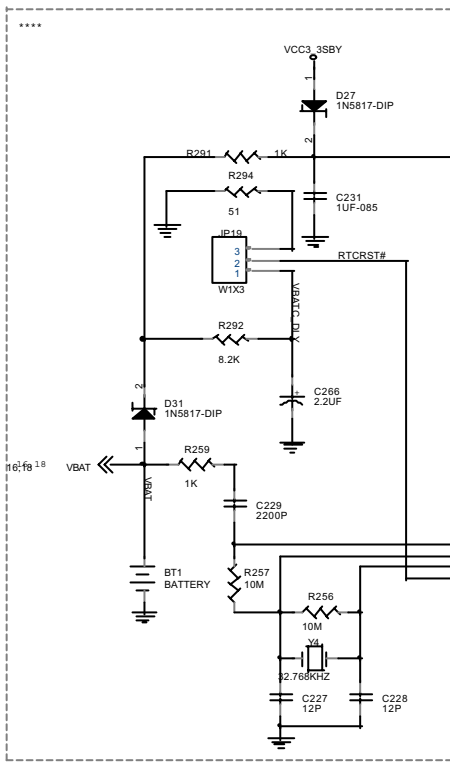






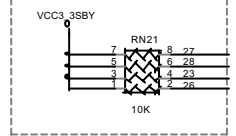
TECHNICA HOUSE CORP		
Title	DIMM2	
Size	Document Number	Rev
Customer	MF-810	1
Date:	Thursday, July 06, 2000	Sheet 9 of 31

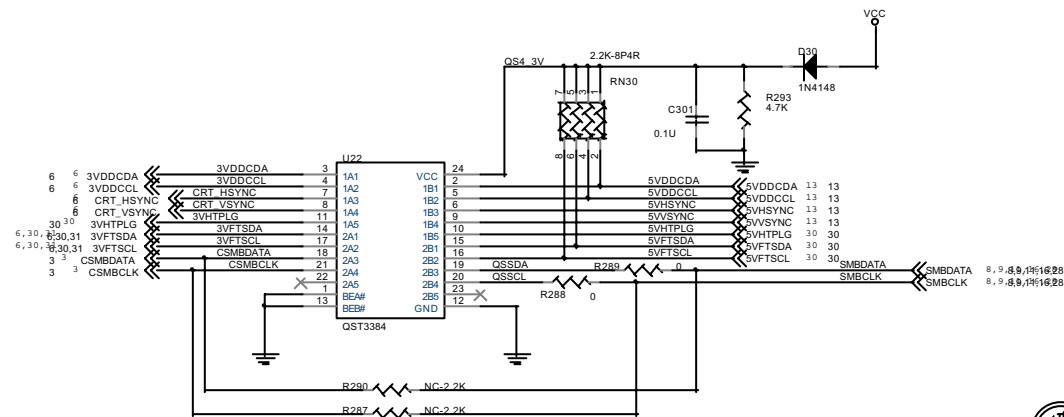




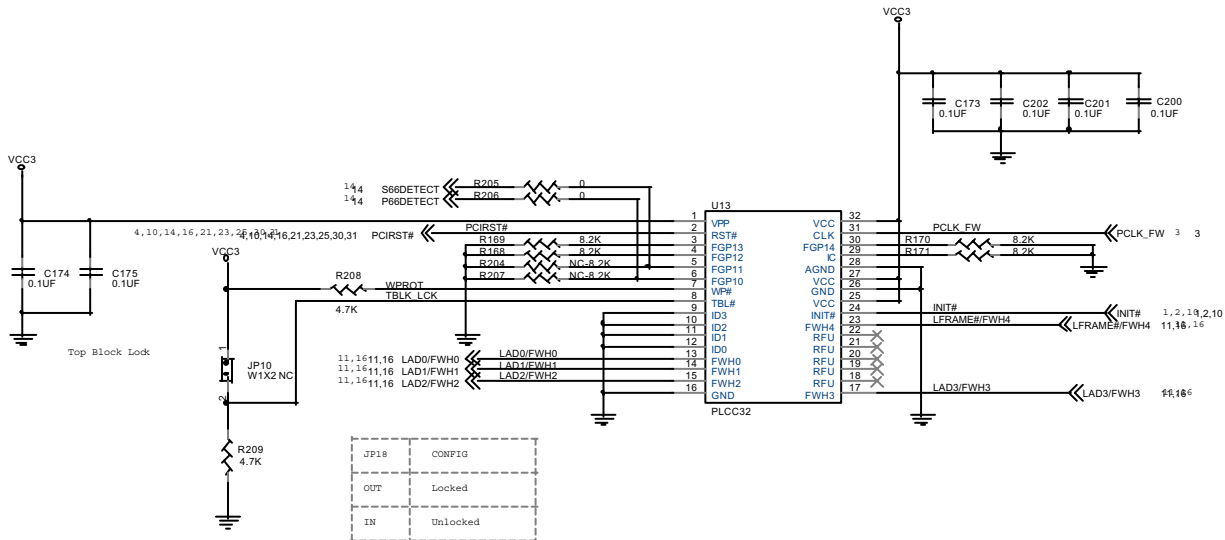
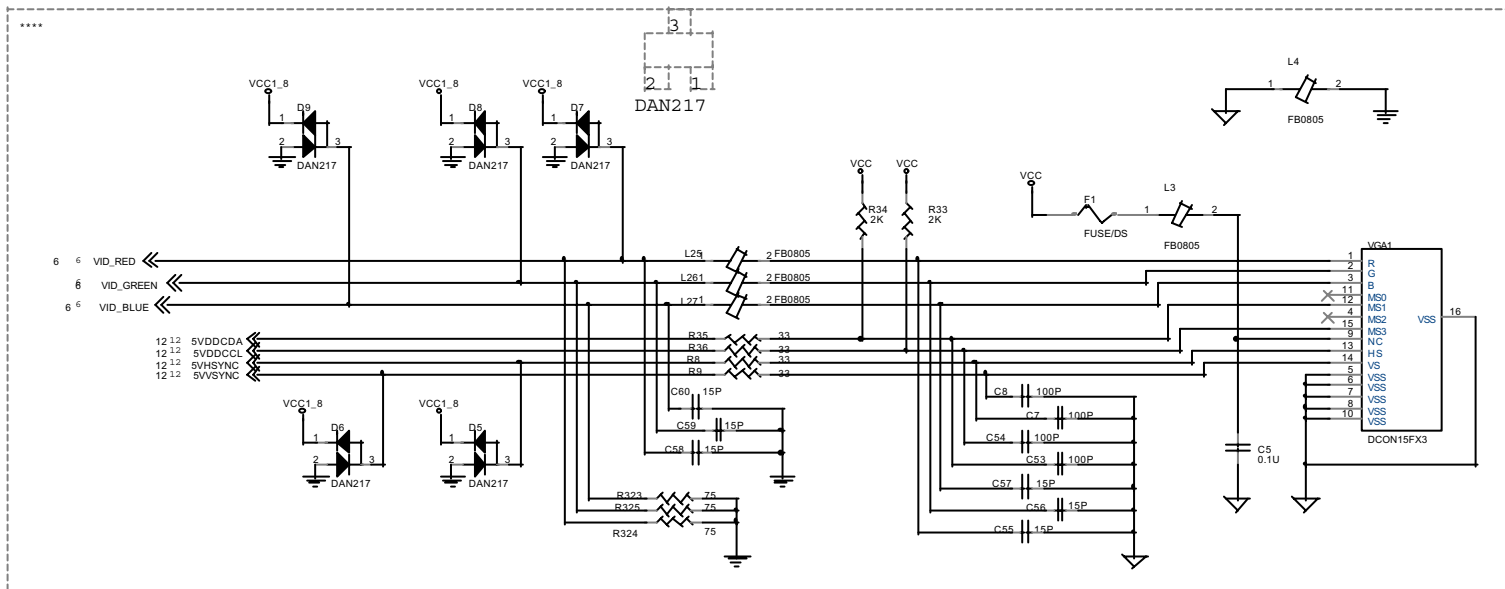
ON:FORCE CPU FREQ STRAP TO SAFE MODE(1111)

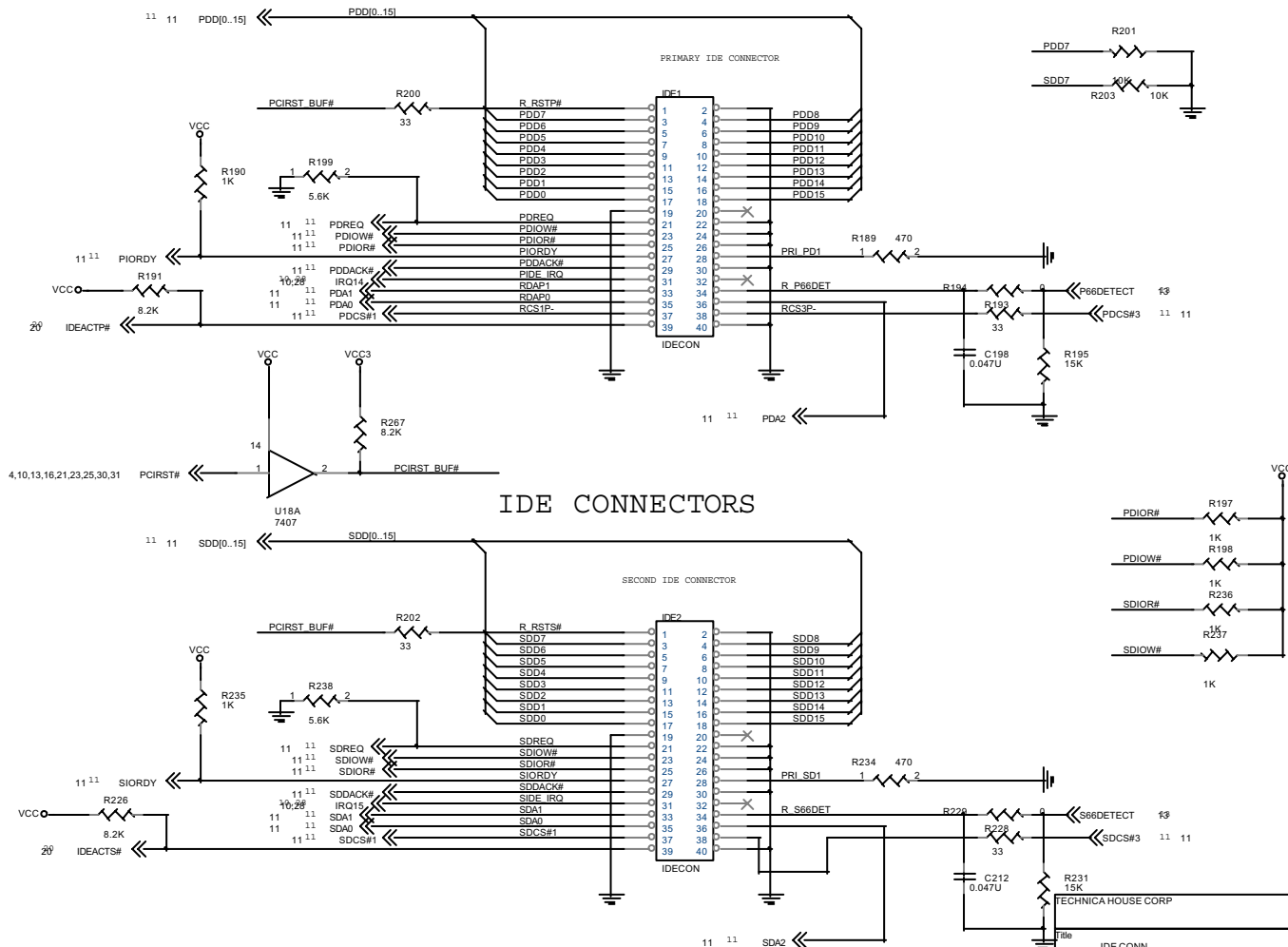
SPKR:
ON:NO REBOOT ON 2ND WATCHDOG TIMELP
OFF: REBOOT ON 2ND WATCHDOG TIMELP





TECHNICA HOUSE CORP		
File		
TV OUT CH7007		
Size	Document Number	Rev
B	MF-810	1
Date:	Thursday, July 06, 2000	Sheet 12 of 31

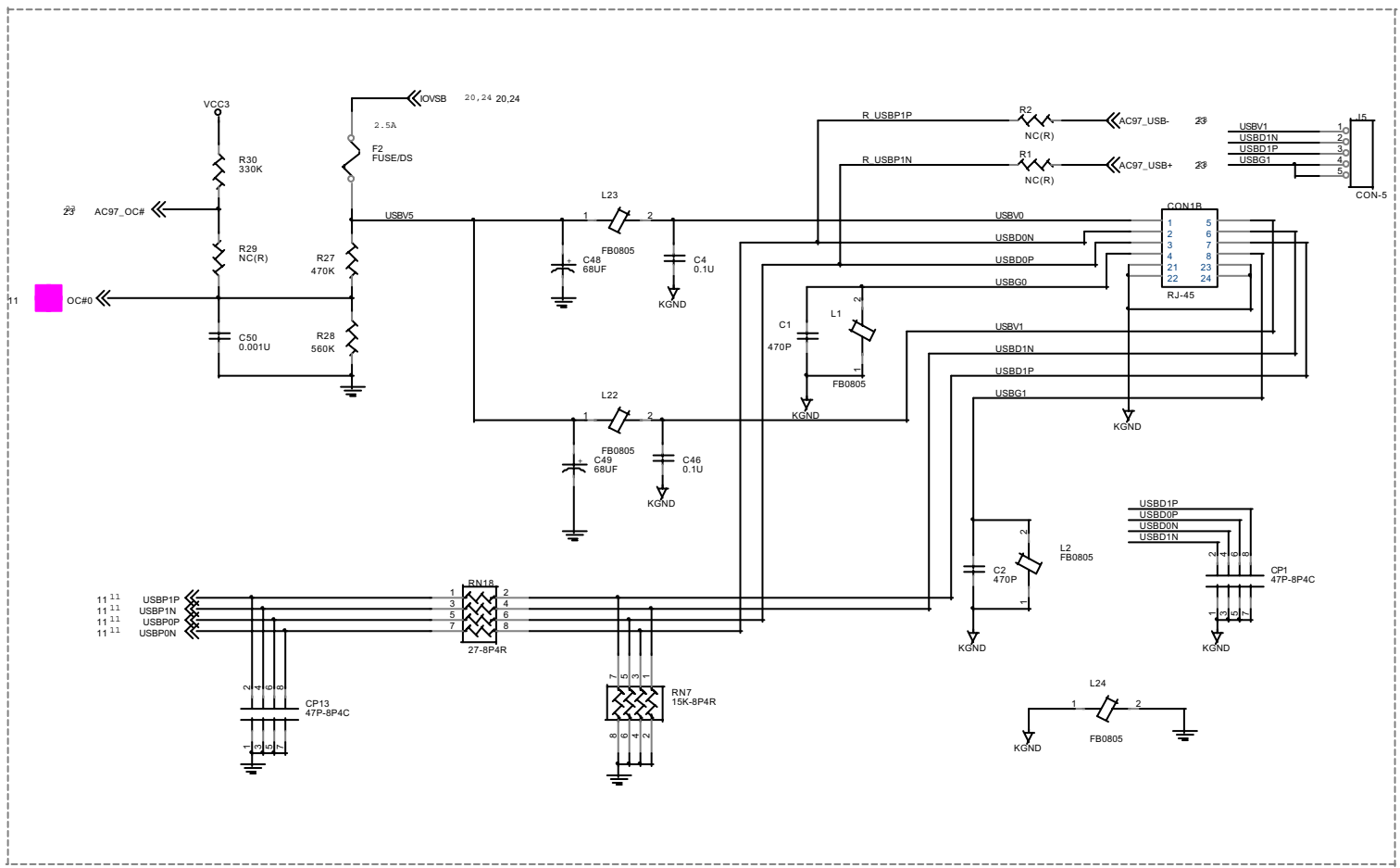




IDE CONNECTORS

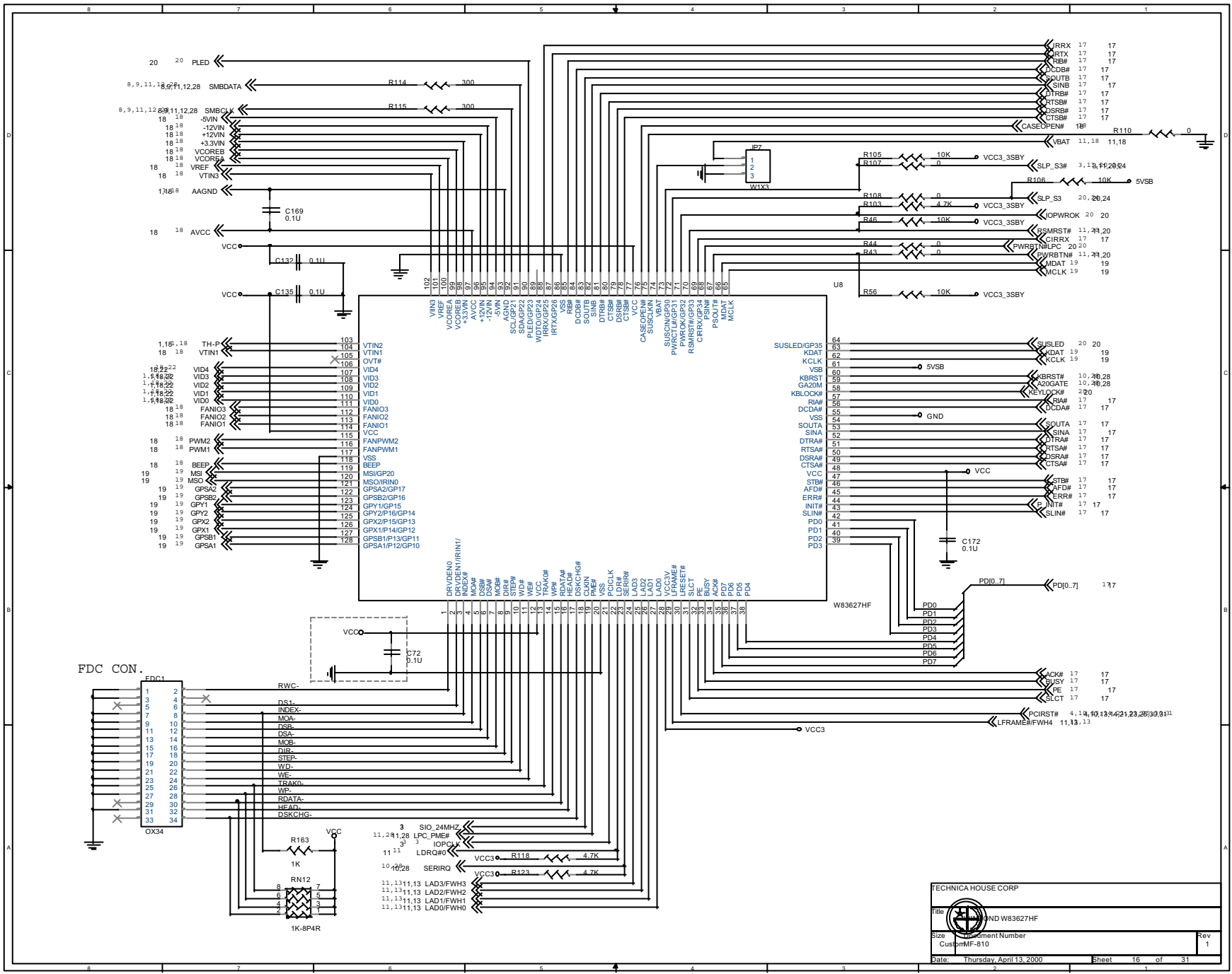
File: IDE CONN		
Size: B	Document Number: MF-810	Rev: 1
Date: Tuesday, September 19, 2000		
Sheet: 14 of 31		






TECHNICA HOUSE CORP		
File: USB CONN		
Size: B	Document Number: MF-810	Rev: 1
Date: Thursday, June 15, 2000		Sheet: 15 of 31





TECHNICA HOUSE CORP

File:  W83627HF

Size: Segment Number:

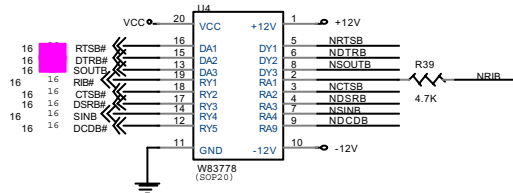
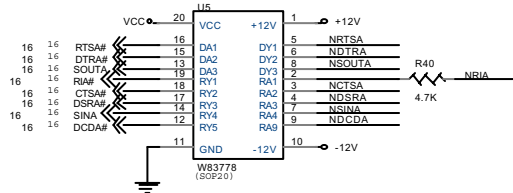
Customer: MF-810

Date: Thursday, April 13, 2000

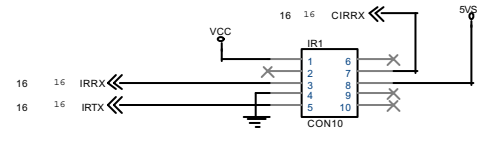
Sheet 16 of 31

Rev 1

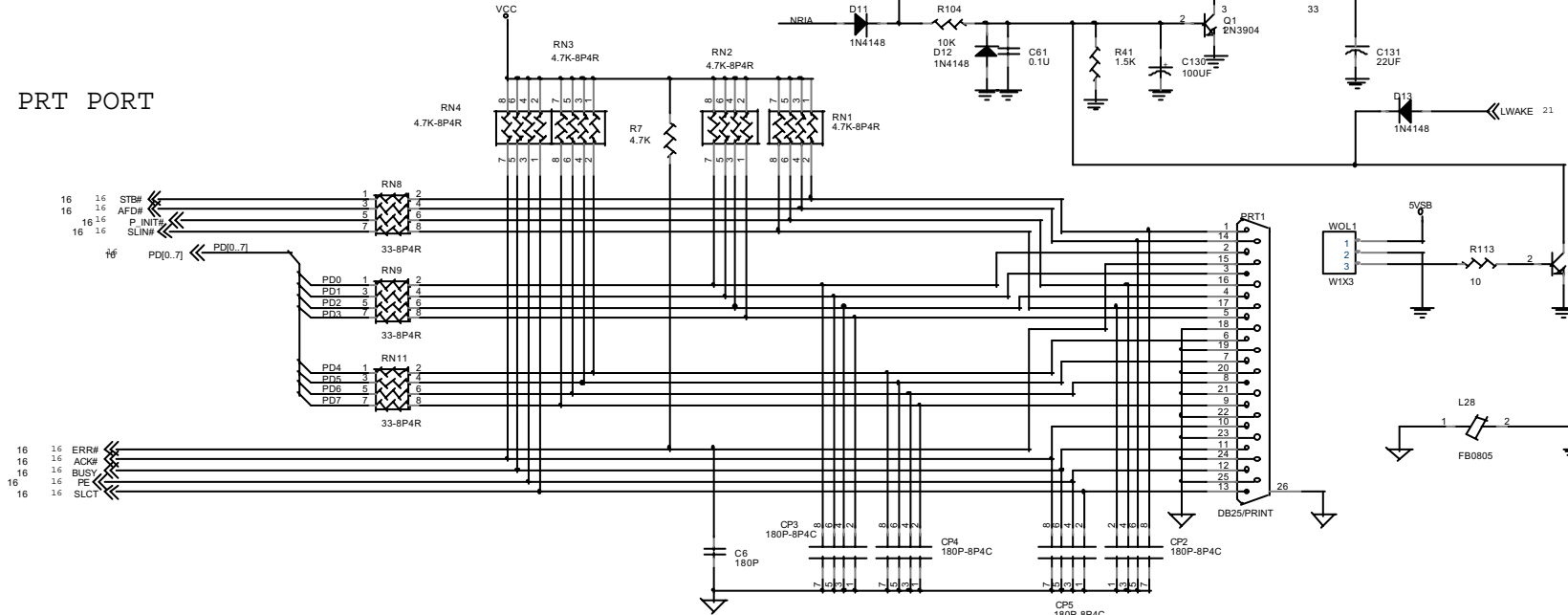
COM PORT



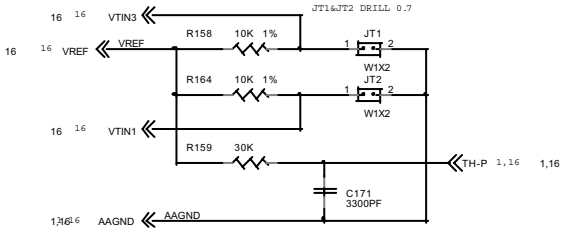
IR CONNECTOR



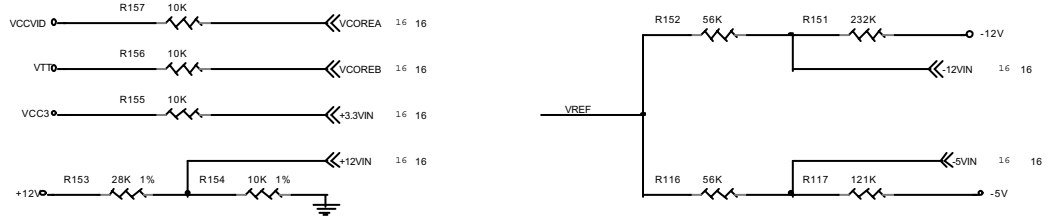
PRT PORT



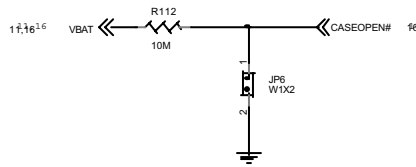
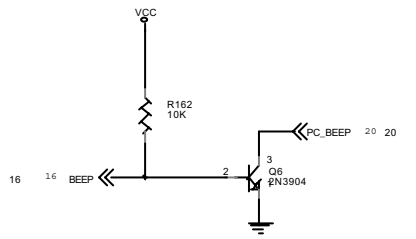
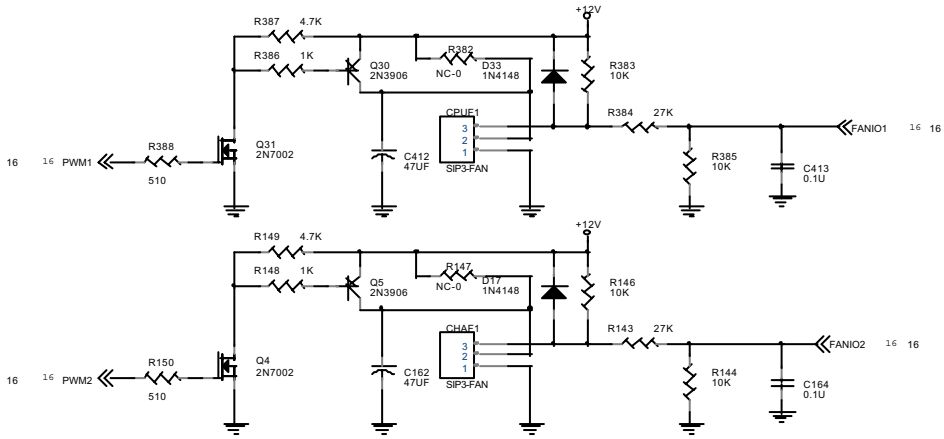
Temperature Sensing



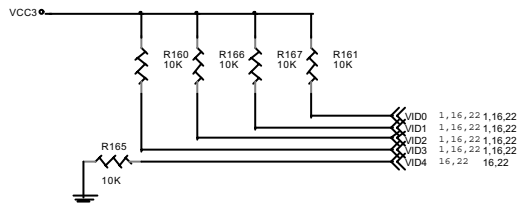
Voltage sensing



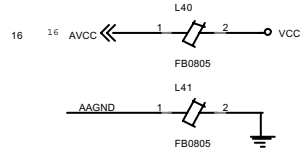
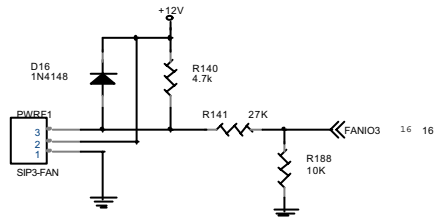
PWM Circuit for FAN speed control



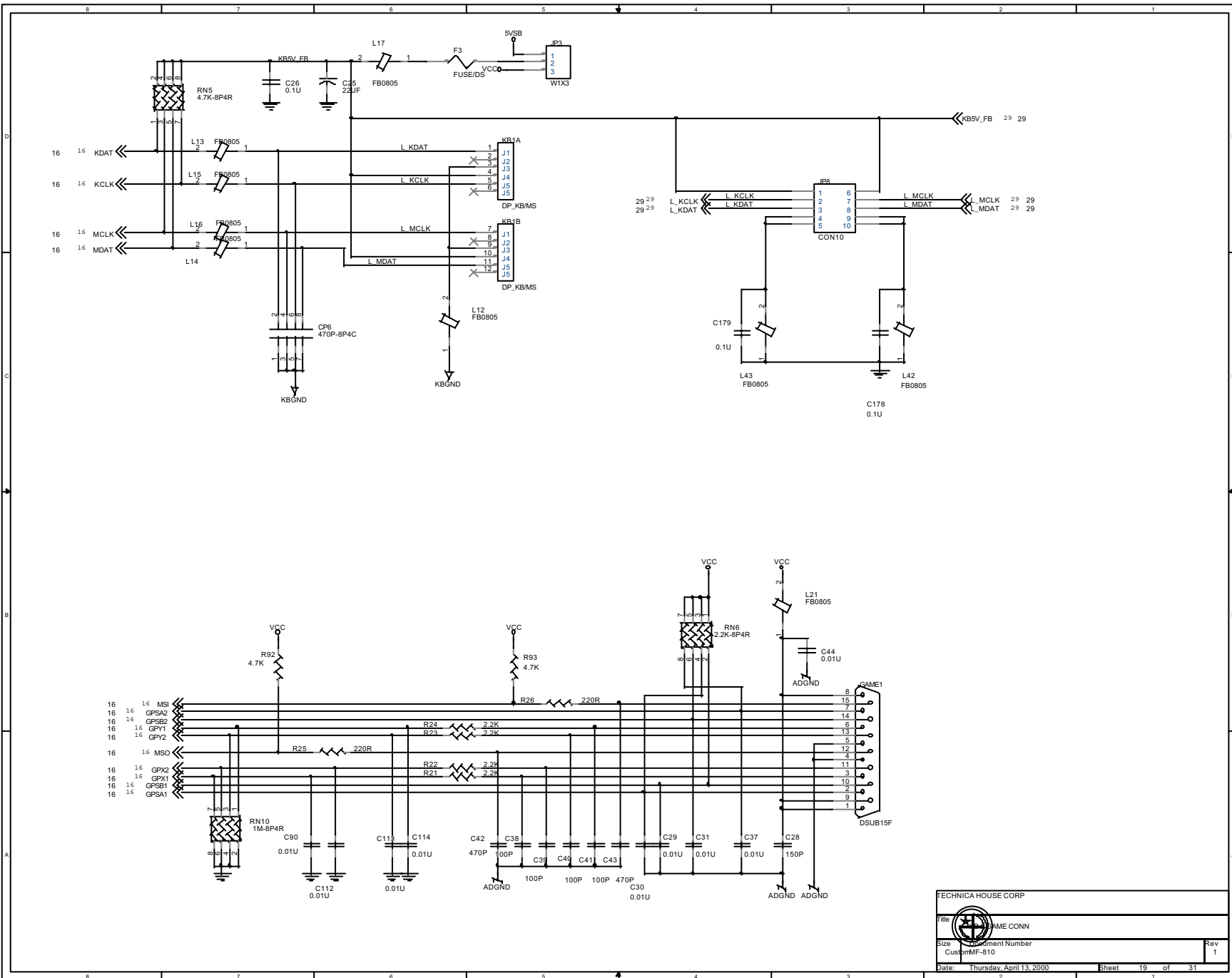
CPU Voltage ID output



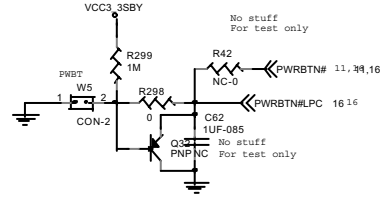
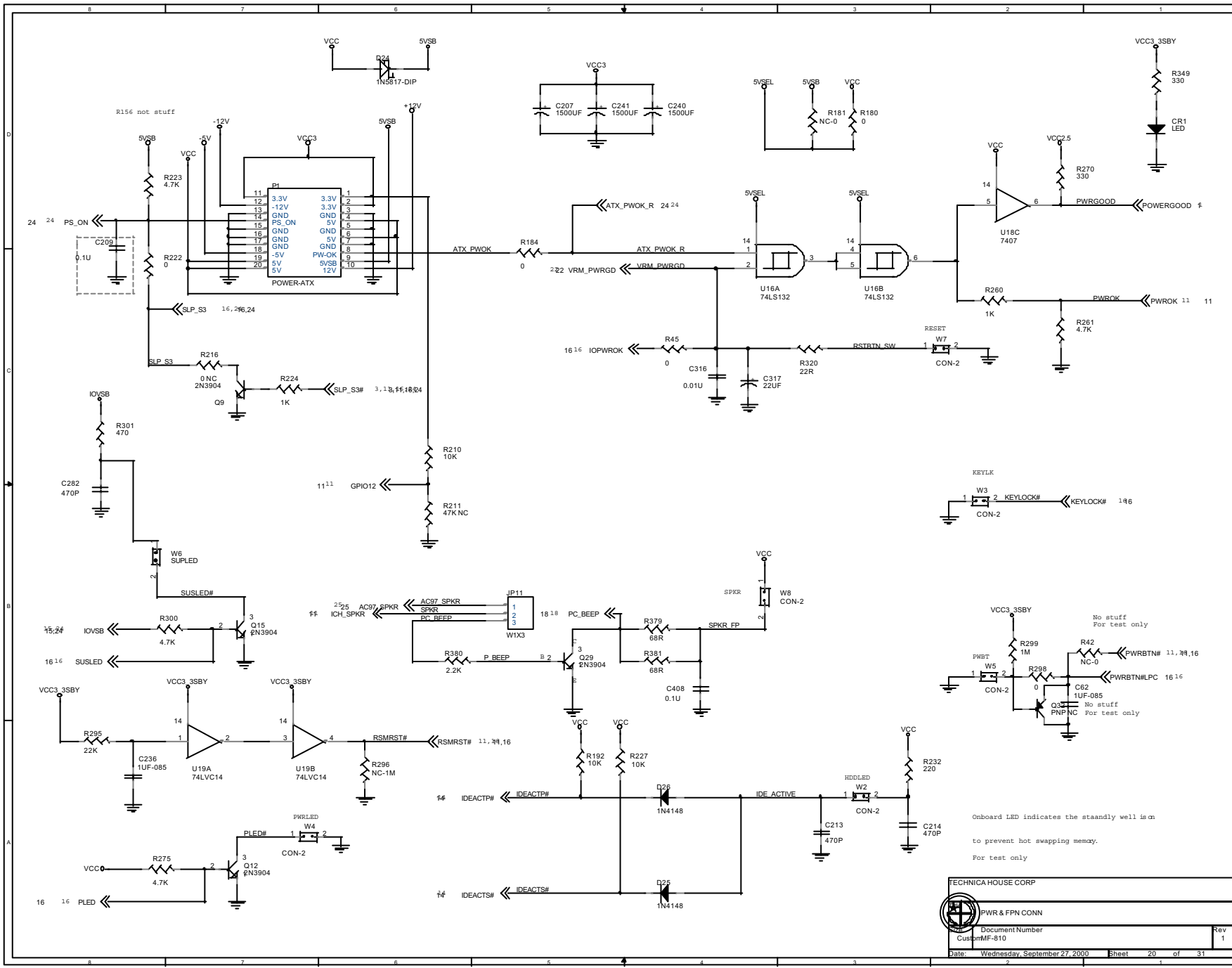
Fan Speed Input Circuit



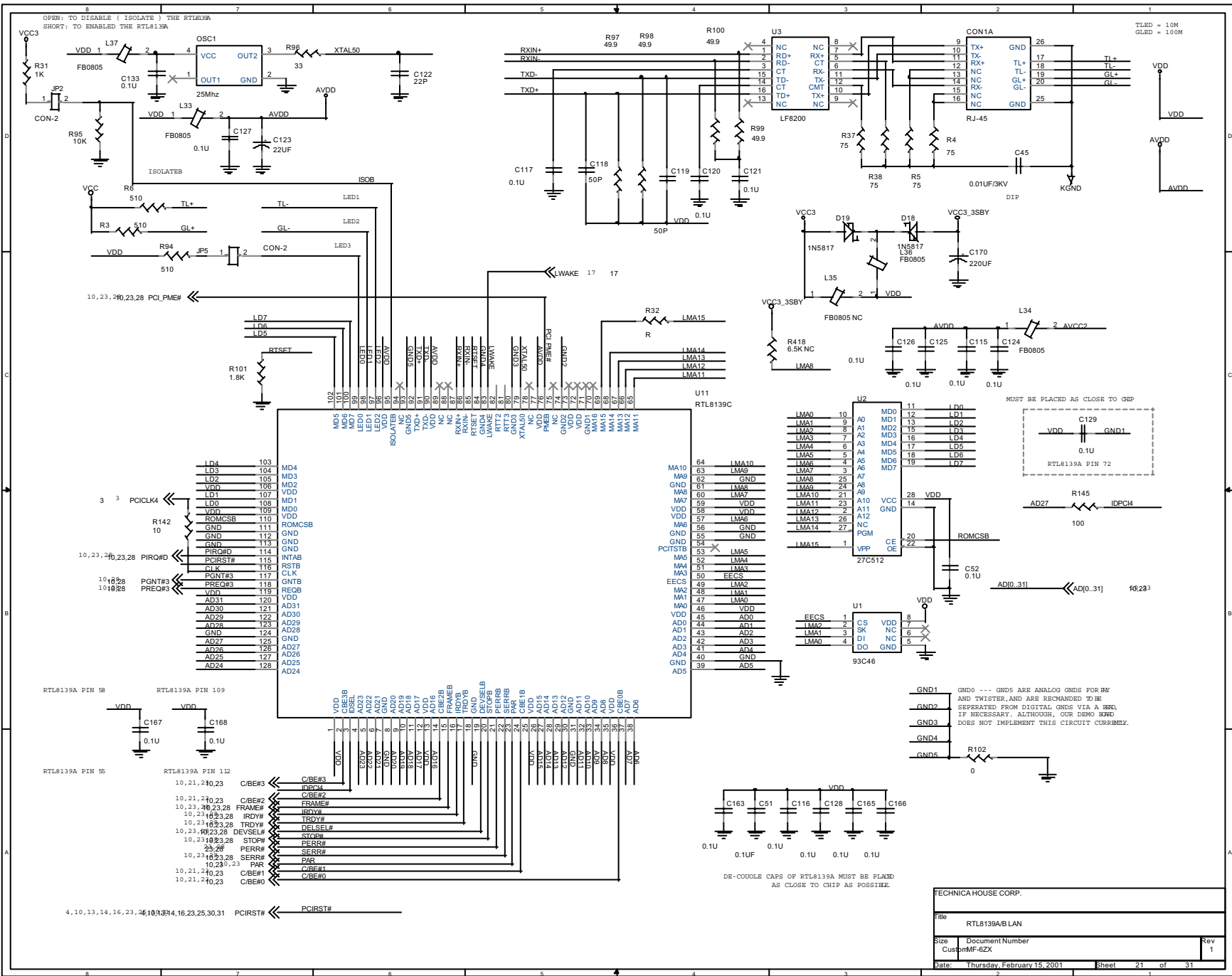
TECHNICA HOUSE CORP		
Title	MONITOR CIRCUIT	
Size	Document Number	Rev
Customer	MF-810	1
Date:	Thursday, April 13, 2000	Sheet 18 of 31

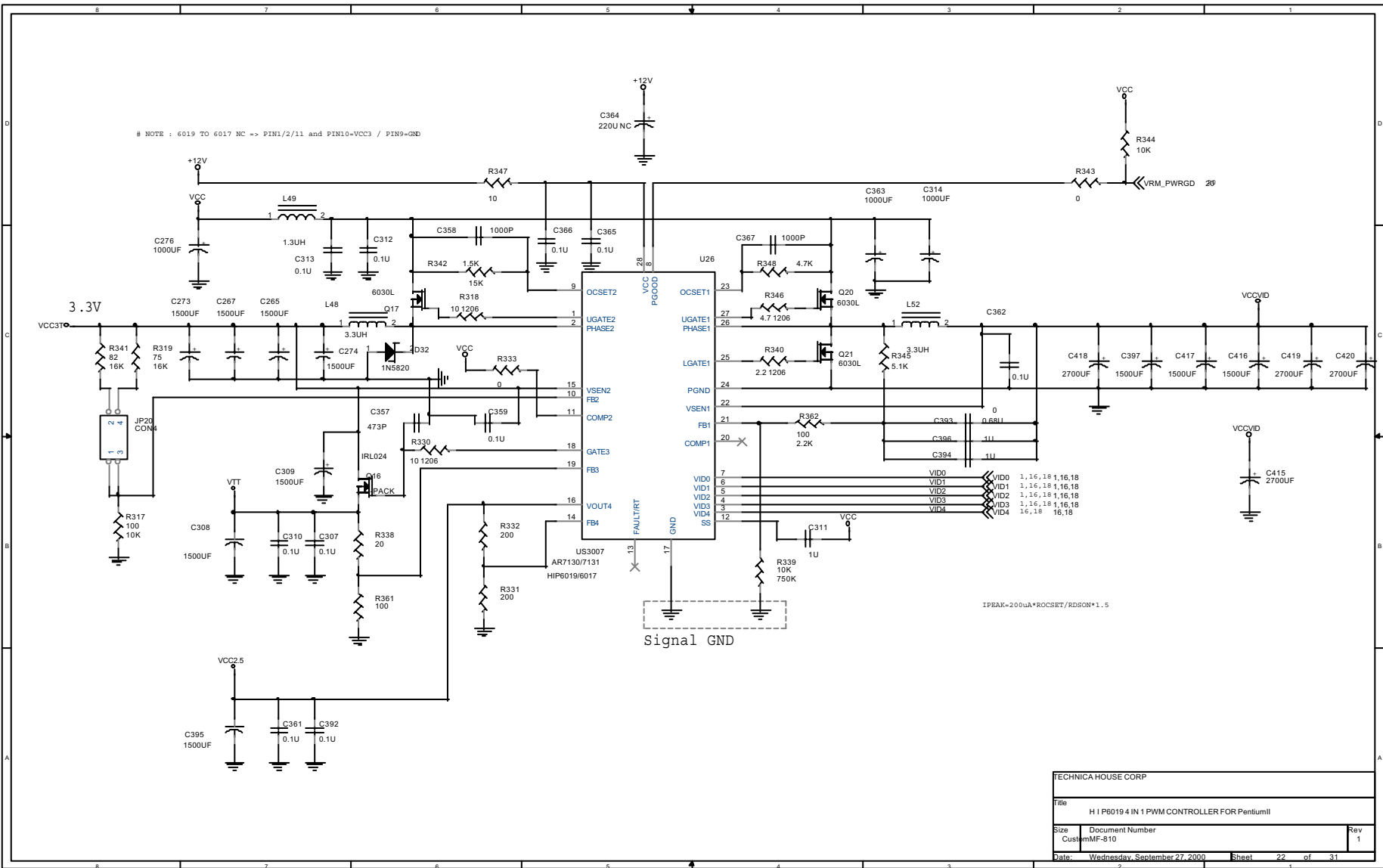


TECHNICA HOUSE CORP	
Title: FRAME CONN	
Size: Custom MF-810	Rev: 1
Date: Thursday, April 13, 2000	Sheet: 19 of 31



Onboard LED indicates the standby well is on
to prevent hot swapping memory.
For test only



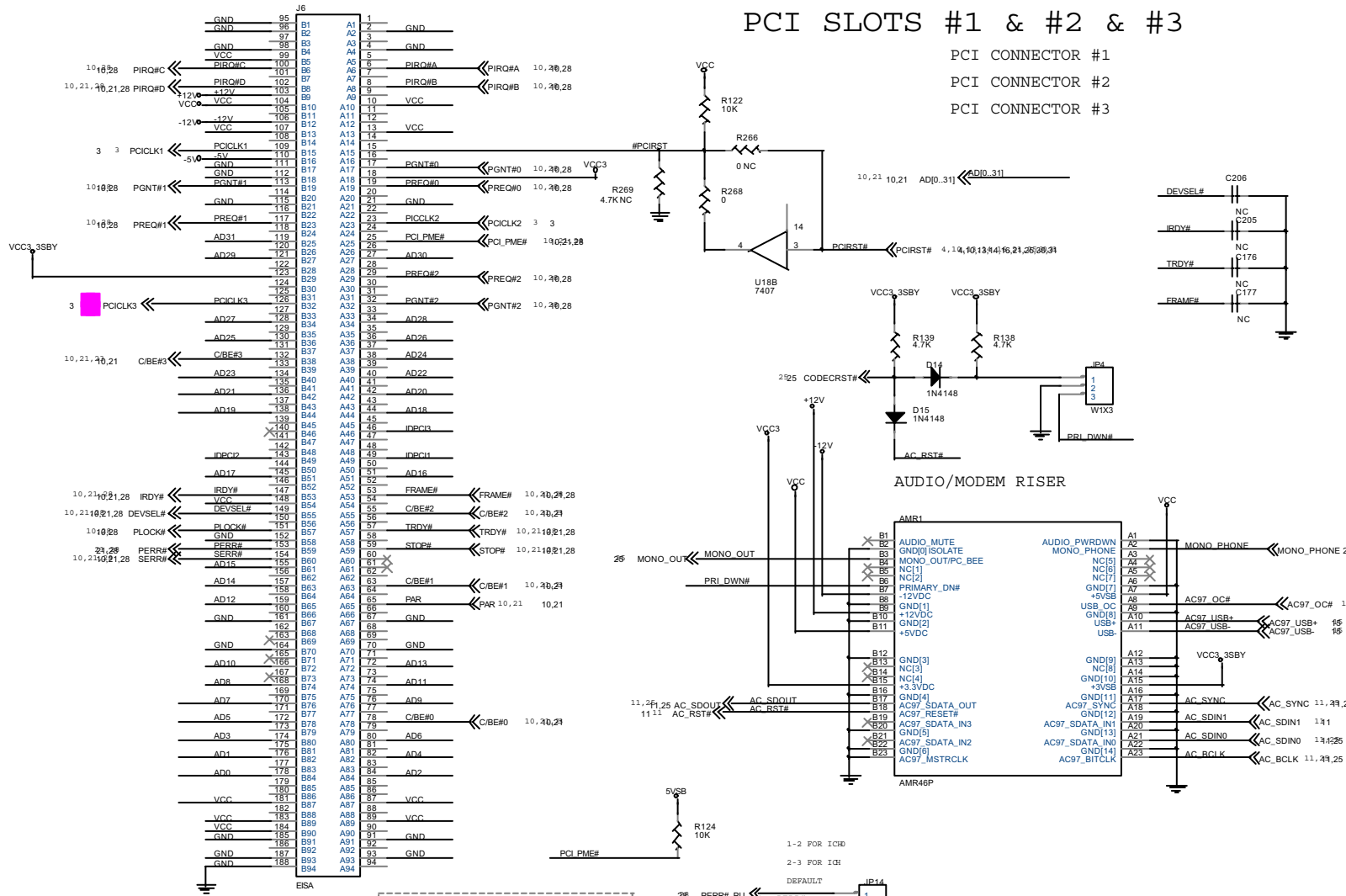


TECHNICA HOUSE CORP		
File H I P8019 4 IN 1 PWM CONTROLLER FOR PentiumIII		
Size	Document Number	Rev
Custom	MF-810	1
Date:	Wednesday, September 27, 2000	Sheet 22 of 31

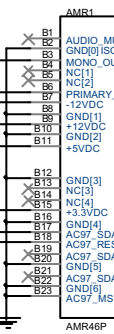


PCI SLOTS #1 & #2 & #3

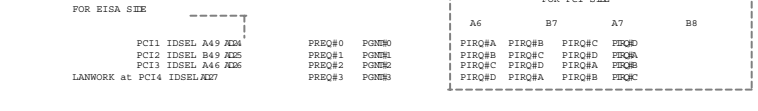
PCI CONNECTOR #1
 PCI CONNECTOR #2
 PCI CONNECTOR #3



AUDIO/MODEM RISER



Pin	Signal	Pin	Signal	Pin	Signal	Pin	Signal
95	GND	81	A1	1	GND		
96	GND	82	A2	2	GND		
97	GND	83	A3	3	GND		
98	VCC	84	A4	4	GND		
99	VCC	85	A5	5	PIRQ#A	10, 20, 28	
100	PIRQ#C	86	A6	6	PIRQ#A	10, 20, 28	
101	PIRQ#B	87	A7	7	PIRQ#B	10, 20, 28	
102	PIRQ#D	88	A8	8	PIRQ#B	10, 20, 28	
103	+12V	89	A9	9	VCC		
104	VCC	90	A10	10	VCC		
105	VCC	91	A11	11	VCC		
106	-12V	92	A12	12	VCC		
107	VCC	93	A13	13	VCC		
108	VCC	94	A14	14	VCC		
109	PCICLK1	95	A15	15	VCC		
110	GND	96	A16	16	PGNT#0	10, 20, 28	
111	GND	97	A17	17	PGNT#0	10, 20, 28	
112	GND	98	A18	18	PREQ#0	10, 20, 28	
113	PGNT#1	99	A19	19	PREQ#0	10, 20, 28	
114	GND	100	A20	20	GND		
115	GND	101	A21	21	GND		
116	PREQ#1	102	A22	22	PCICLK2	3, 3	
117	AD31	103	A23	23	PCICLK2	3, 3	
118	AD29	104	A24	24	PCL_PME#	1, 0, 21, 28	
119	AD28	105	A25	25	PCL_PME#	1, 0, 21, 28	
120	AD27	106	A26	26	AD30		
121	AD26	107	A27	27	AD30		
122	AD25	108	A28	28	PREQ#2	10, 20, 28	
123	AD24	109	A29	29	PREQ#2	10, 20, 28	
124	AD23	110	A30	30	PGNT#2	10, 20, 28	
125	AD22	111	A31	31	PGNT#2	10, 20, 28	
126	AD21	112	A32	32	PGNT#2	10, 20, 28	
127	AD20	113	A33	33	AD28		
128	AD19	114	A34	34	AD28		
129	AD18	115	A35	35	AD28		
130	AD17	116	A36	36	AD28		
131	AD16	117	A37	37	AD28		
132	AD15	118	A38	38	AD28		
133	AD14	119	A39	39	AD28		
134	AD13	120	A40	40	AD28		
135	AD12	121	A41	41	AD28		
136	AD11	122	A42	42	AD28		
137	AD10	123	A43	43	AD28		
138	AD9	124	A44	44	AD28		
139	AD8	125	A45	45	AD28		
140	AD7	126	A46	46	IDPC#3		
141	AD6	127	A47	47	IDPC#3		
142	AD5	128	A48	48	IDPC#1		
143	AD4	129	A49	49	IDPC#1		
144	AD3	130	A50	50	AD16		
145	AD2	131	A51	51	AD16		
146	AD1	132	A52	52	FRAME#	10, 20, 28, 28	
147	AD0	133	A53	53	FRAME#	10, 20, 28, 28	
148	VCC	134	A54	54	C/BE#2	10, 20, 28	
149	VCC	135	A55	55	C/BE#2	10, 20, 28	
150	VCC	136	A56	56	C/BE#2	10, 20, 28	
151	VCC	137	A57	57	TRDY#	10, 21, 10, 21, 28	
152	GND	138	A58	58	TRDY#	10, 21, 10, 21, 28	
153	GND	139	A59	59	STOP#	10, 21, 10, 21, 28	
154	GND	140	A60	60	STOP#	10, 21, 10, 21, 28	
155	GND	141	A61	61	STOP#	10, 21, 10, 21, 28	
156	GND	142	A62	62	STOP#	10, 21, 10, 21, 28	
157	GND	143	A63	63	C/BE#1	10, 20, 28	
158	GND	144	A64	64	C/BE#1	10, 20, 28	
159	GND	145	A65	65	C/BE#1	10, 20, 28	
160	GND	146	A66	66	PAR	10, 21	
161	GND	147	A67	67	PAR	10, 21	
162	GND	148	A68	68	PAR	10, 21	
163	GND	149	A69	69	GND		
164	GND	150	A70	70	GND		
165	GND	151	A71	71	GND		
166	GND	152	A72	72	GND		
167	GND	153	A73	73	GND		
168	GND	154	A74	74	AD11		
169	GND	155	A75	75	AD9		
170	GND	156	A76	76	AD9		
171	GND	157	A77	77	AD9		
172	GND	158	A78	78	C/BE#0	10, 20, 28	
173	GND	159	A79	79	C/BE#0	10, 20, 28	
174	GND	160	A80	80	AD6		
175	GND	161	A81	81	AD6		
176	GND	162	A82	82	AD6		
177	GND	163	A83	83	AD6		
178	GND	164	A84	84	AD6		
179	GND	165	A85	85	AD6		
180	GND	166	A86	86	VCC		
181	GND	167	A87	87	VCC		
182	GND	168	A88	88	VCC		
183	GND	169	A89	89	VCC		
184	GND	170	A90	90	VCC		
185	GND	171	A91	91	GND		
186	GND	172	A92	92	GND		
187	GND	173	A93	93	GND		
188	GND	174	A94	94	GND		

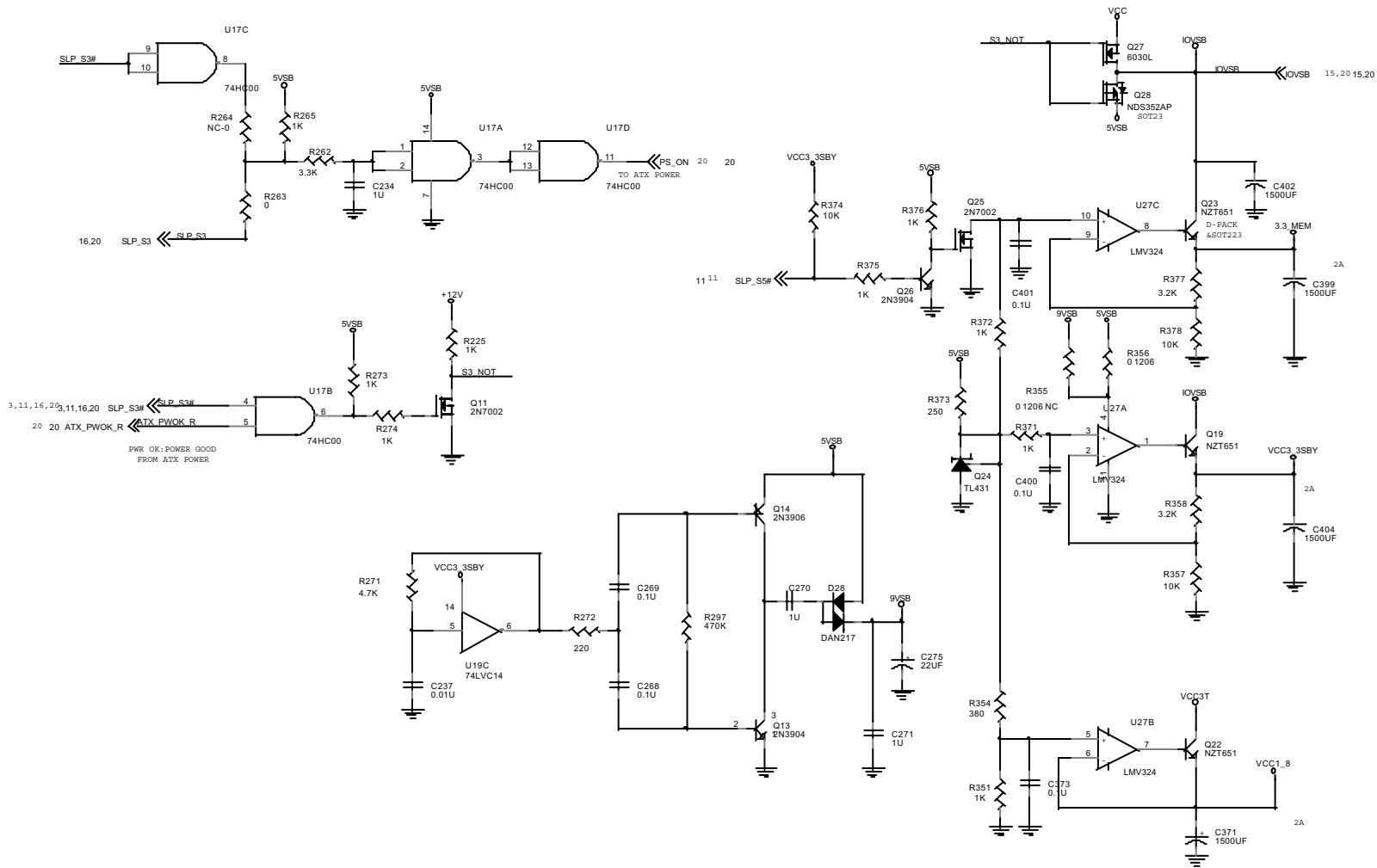


THIS DRAWING CONTAINS INFORMATION WHICH HAS NOT BEEN VERIFIED FOR MANUFACTURING AN END USER PRODUCT. INTEL IS NOT RESPONSIBLE FOR THE MISUSE OF THIS INFORMATION.

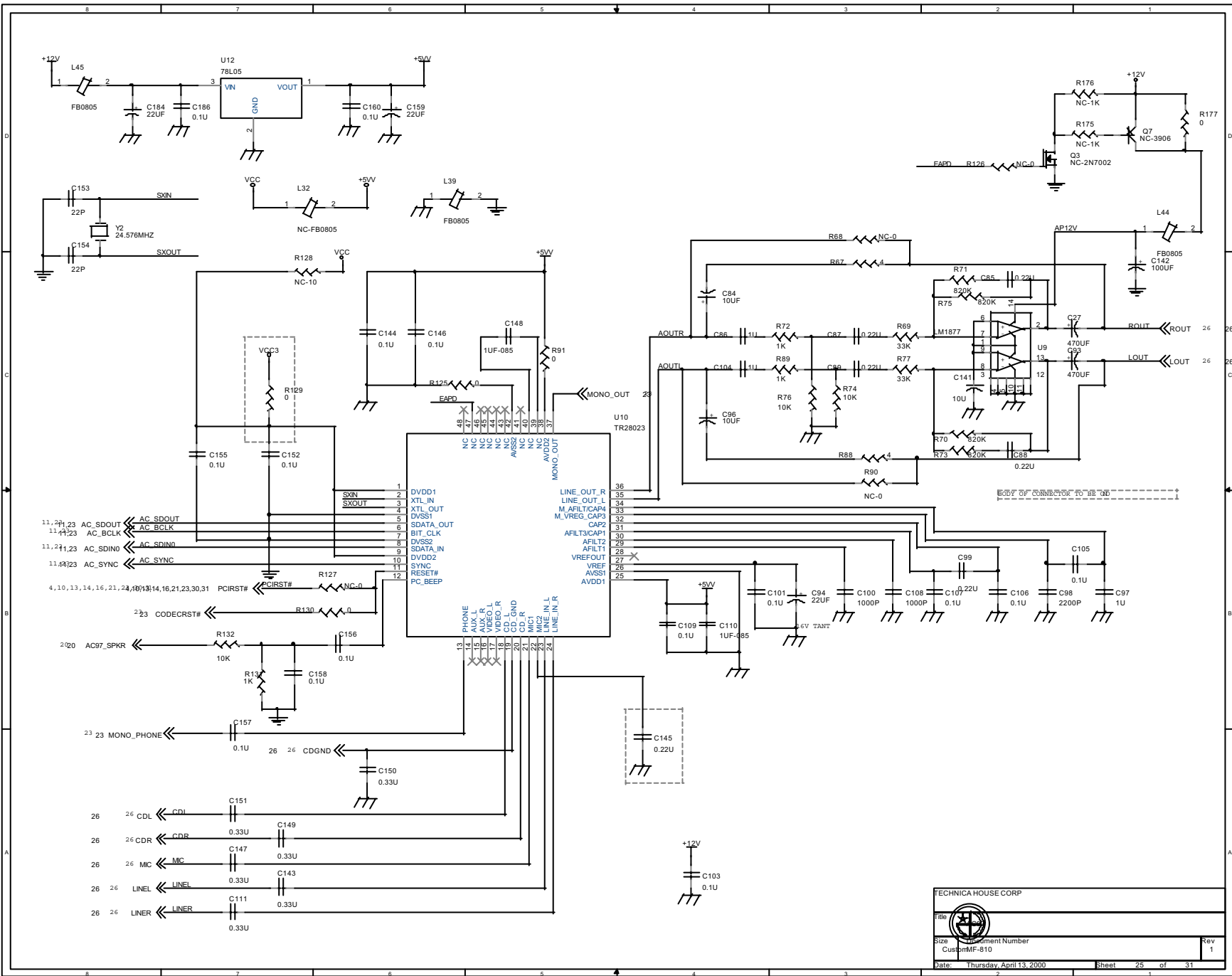
INTEL SECRET
 CONFIDENTIAL INFORMATION

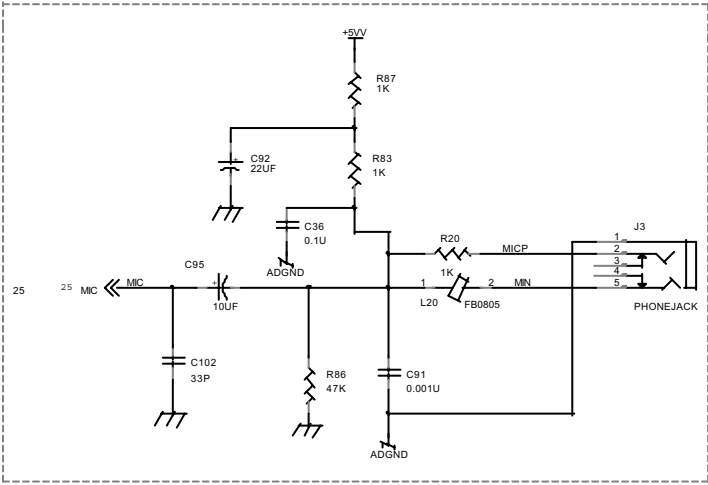
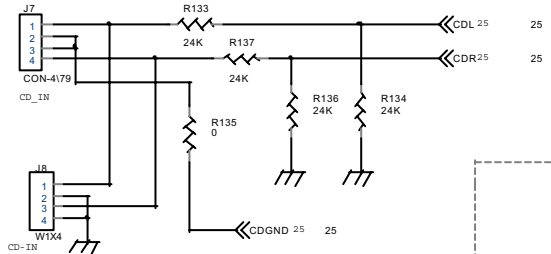
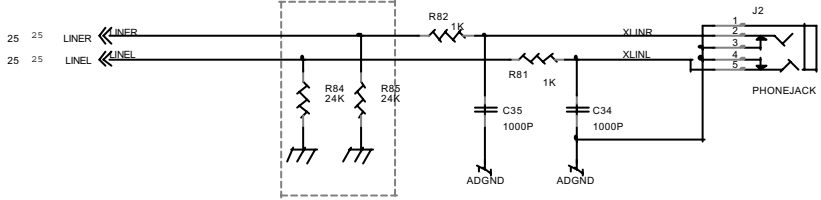
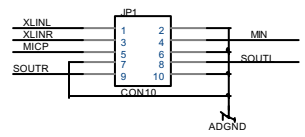
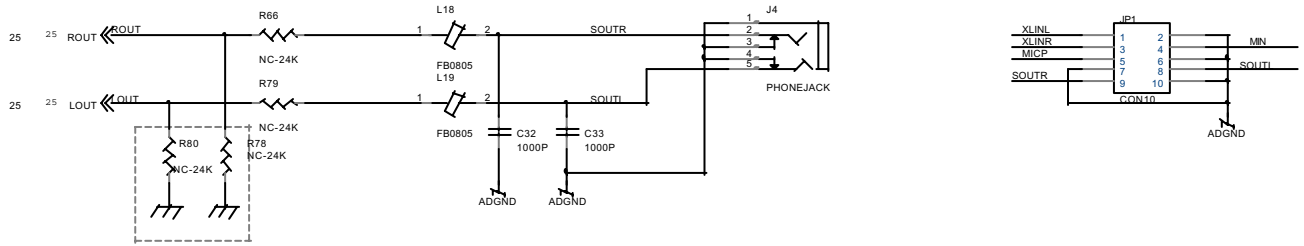
INFORMATION

Title	PCI 1 & 2	Rev	A
Size	Document Number		
	Custord-610BS		
Date	Thursday, April 13, 2000	Sheet	23 of 31

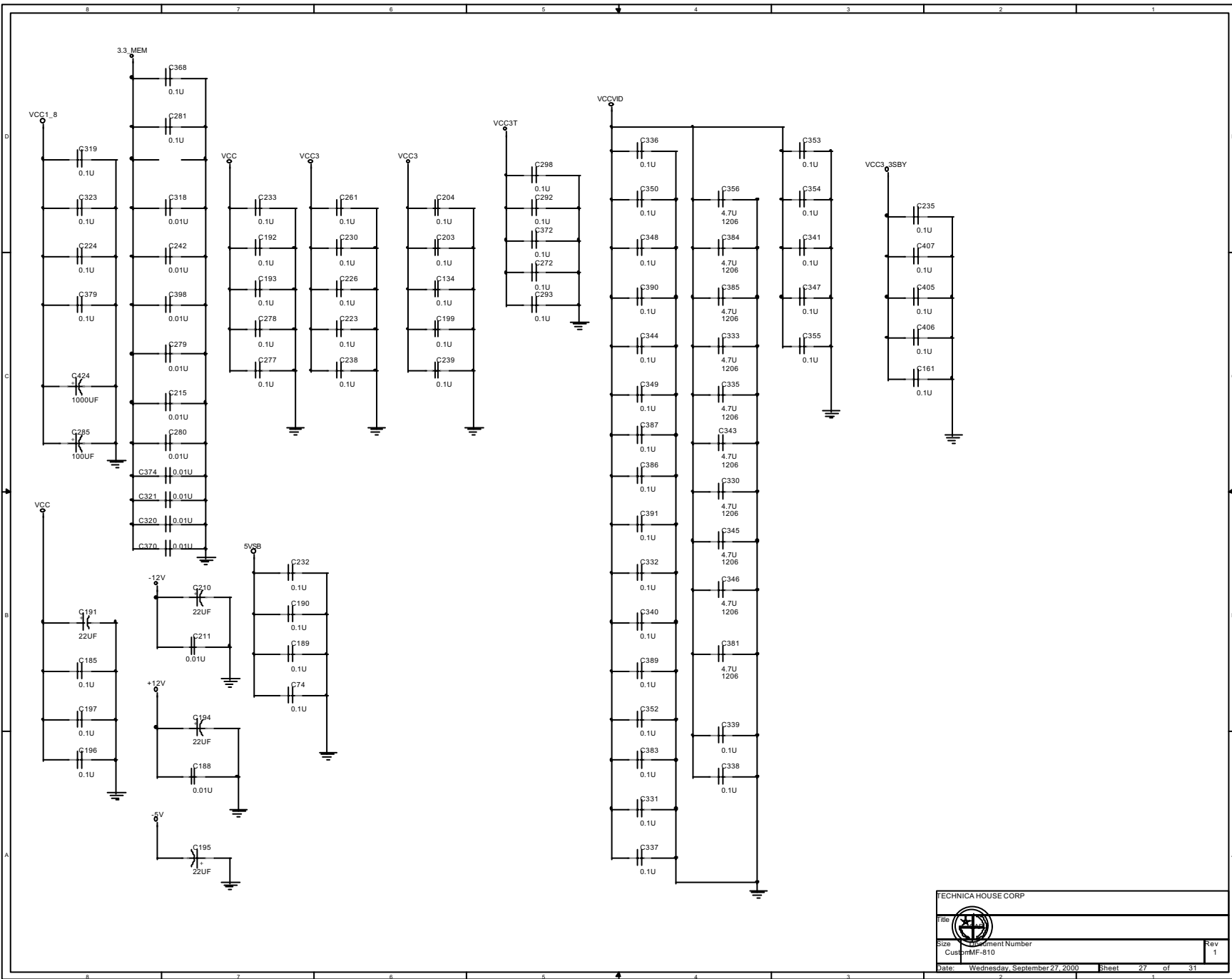


TECHNICA HOUSE CORP		
Title		
Size		
Customer Number		
Date: Thursday, April 13, 2000		
Sheet 24 of 31		Rev 1

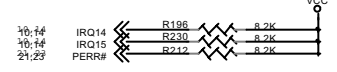
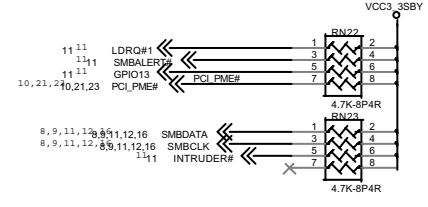
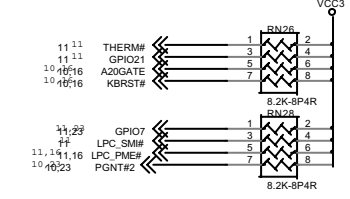
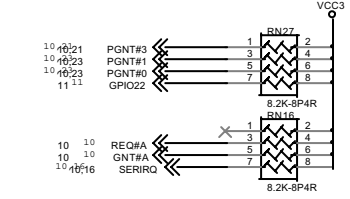
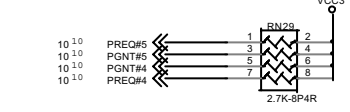
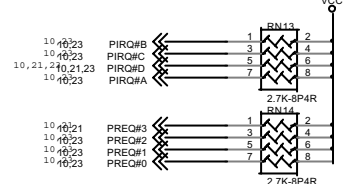
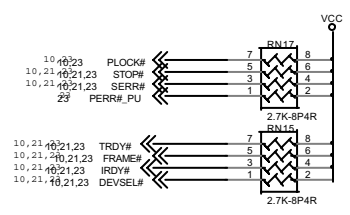




TECHNICA HOUSE CORP	
Title	CONN
Size	Document Number
Customer	MF-810
Date: Thursday, April 13, 2000	Sheet 26 of 31
	Rev A

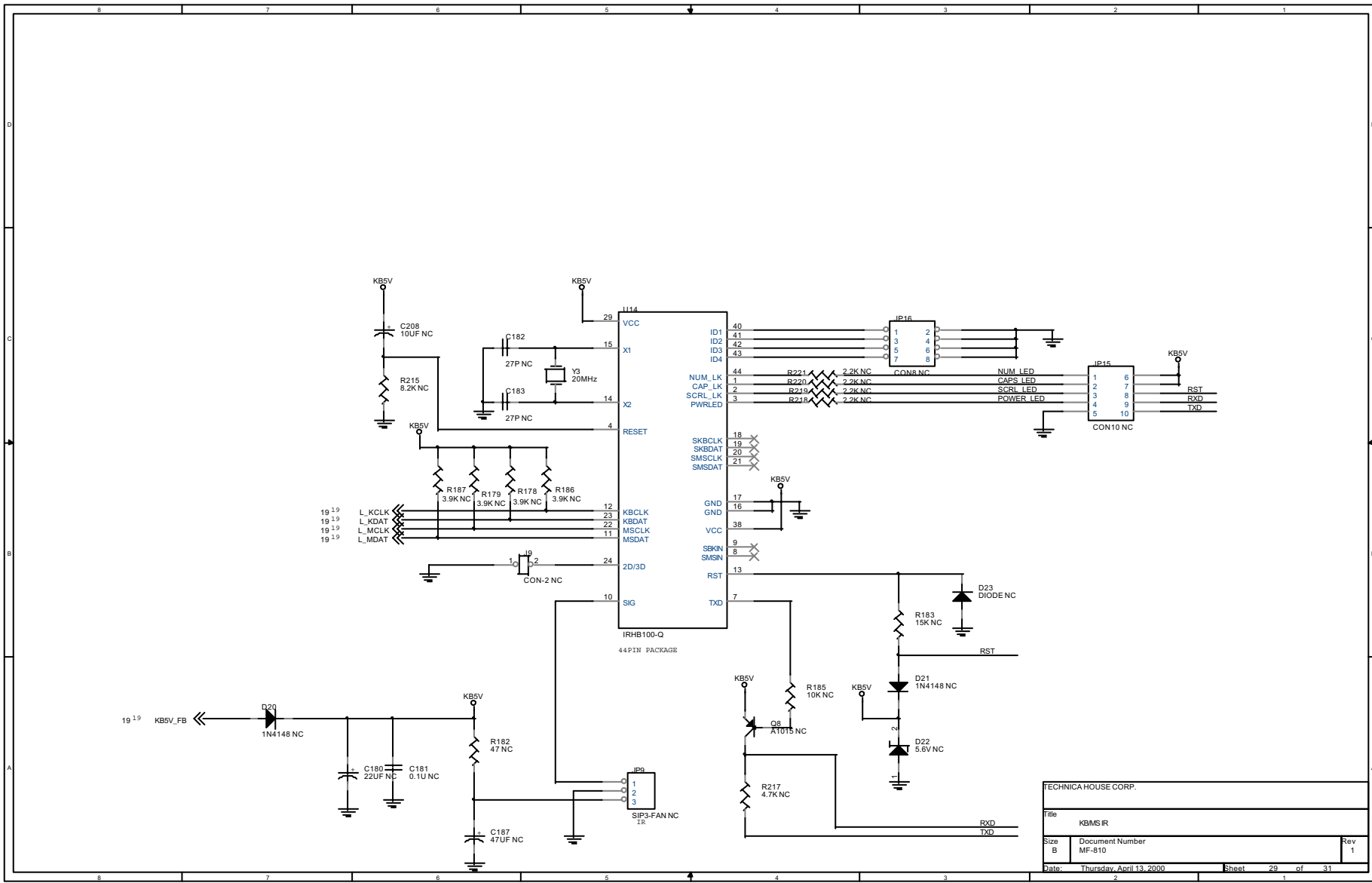


TECHNICA HOUSE CORP		
Title		
Size		Rev
Customer Number		1
Date: Wednesday, September 27, 2000		Sheet 27 of 31



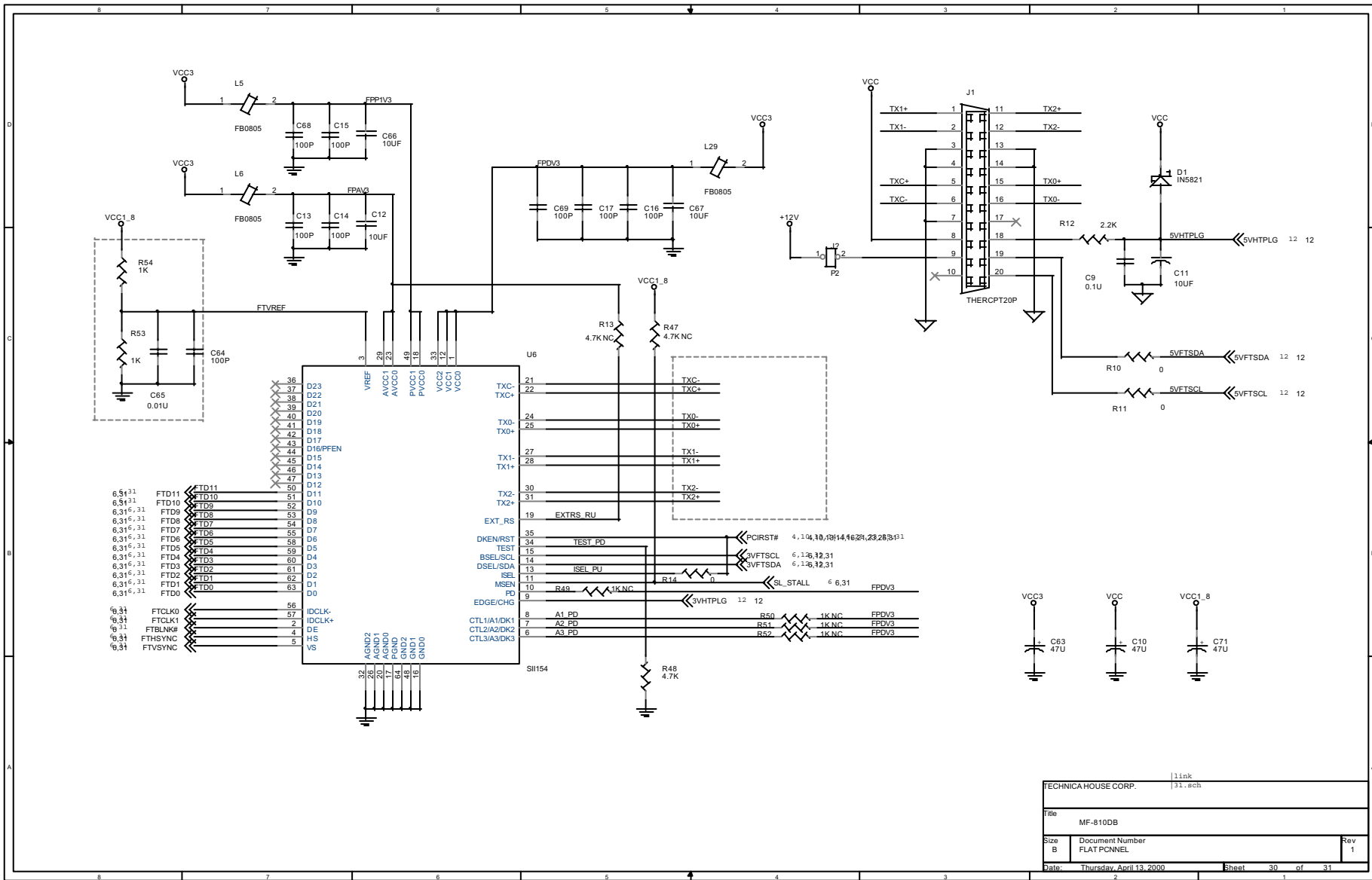
TECHNICA HOUSE CORP		
File PULL UP RESISTOR		
Size B	Document Number MF-810	Rev A
Date: Thursday, April 13, 2000	Sheet 28	of 31



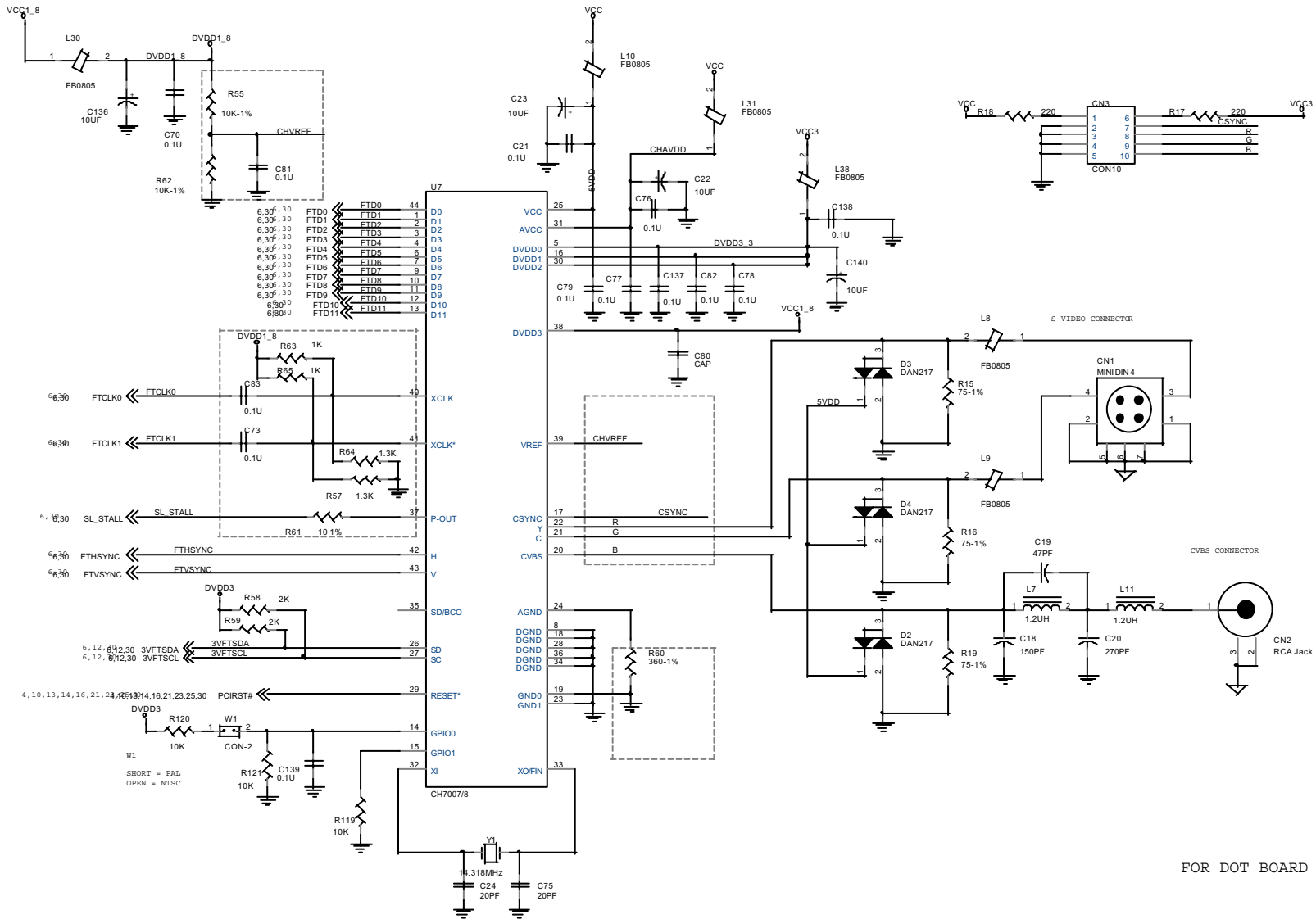


TECHNICA HOUSE CORP.		
File: KBMIS IR		
Size: B	Document Number: MF-810	Rev: 1
Date: Thursday, April 13, 2000		Sheet: 29 of 31






TECHNICA HOUSE CORP.		link
File		31.sch
MF-810DB		
Size	Document Number	Rev
B	FLAT PCNNEL	1
Date:	Thursday, April 13, 2000	Sheet 30 of 31



FOR DOT BOARD

TECHNICA HOUSE CORP.	
	
Title: 007 Video Encoder	
Size: _____	Document Number: _____
Customer: SMF-810DB	Rev: 1.0
Date: Thursday, June 15, 2000	Sheet: 31 of 31