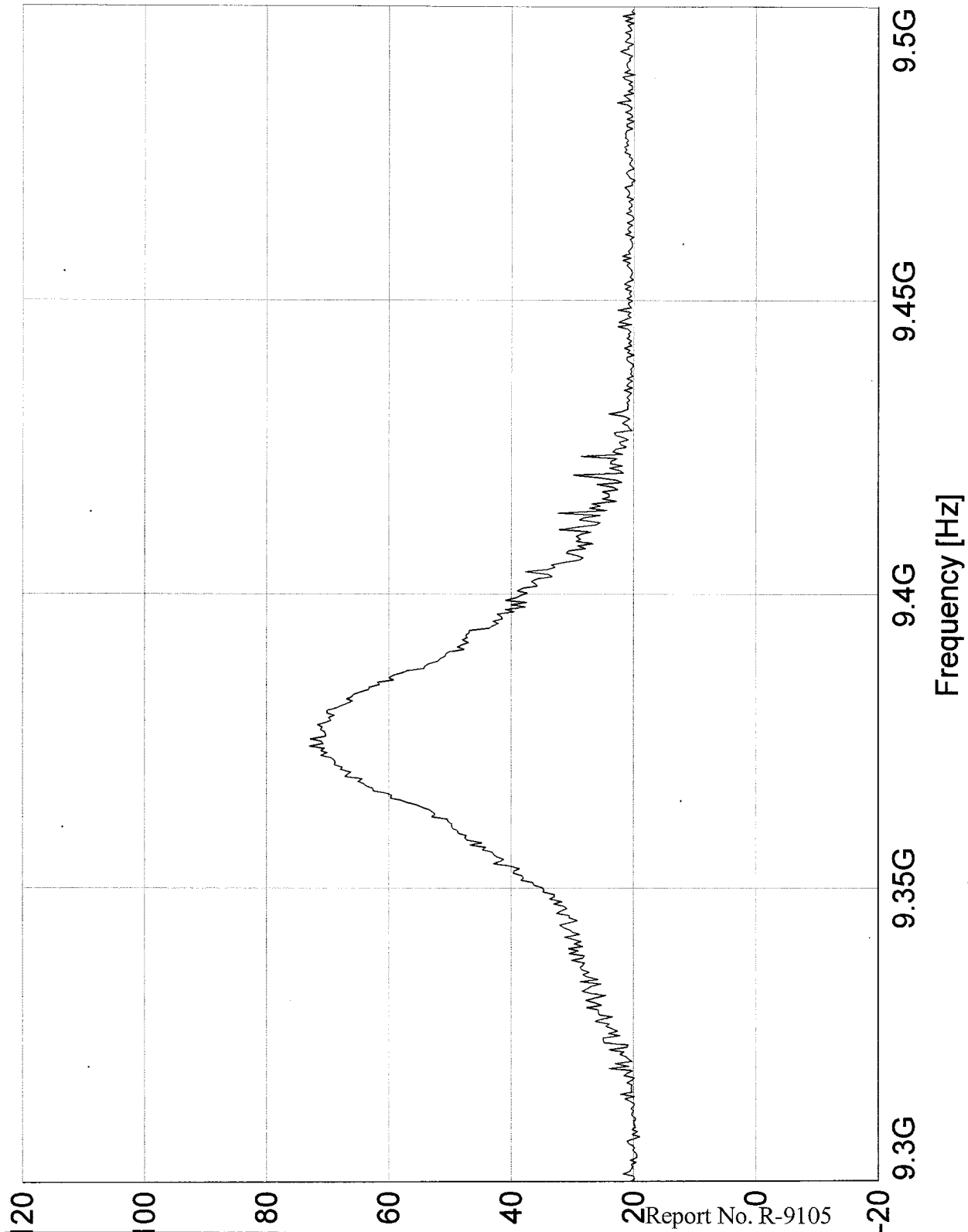
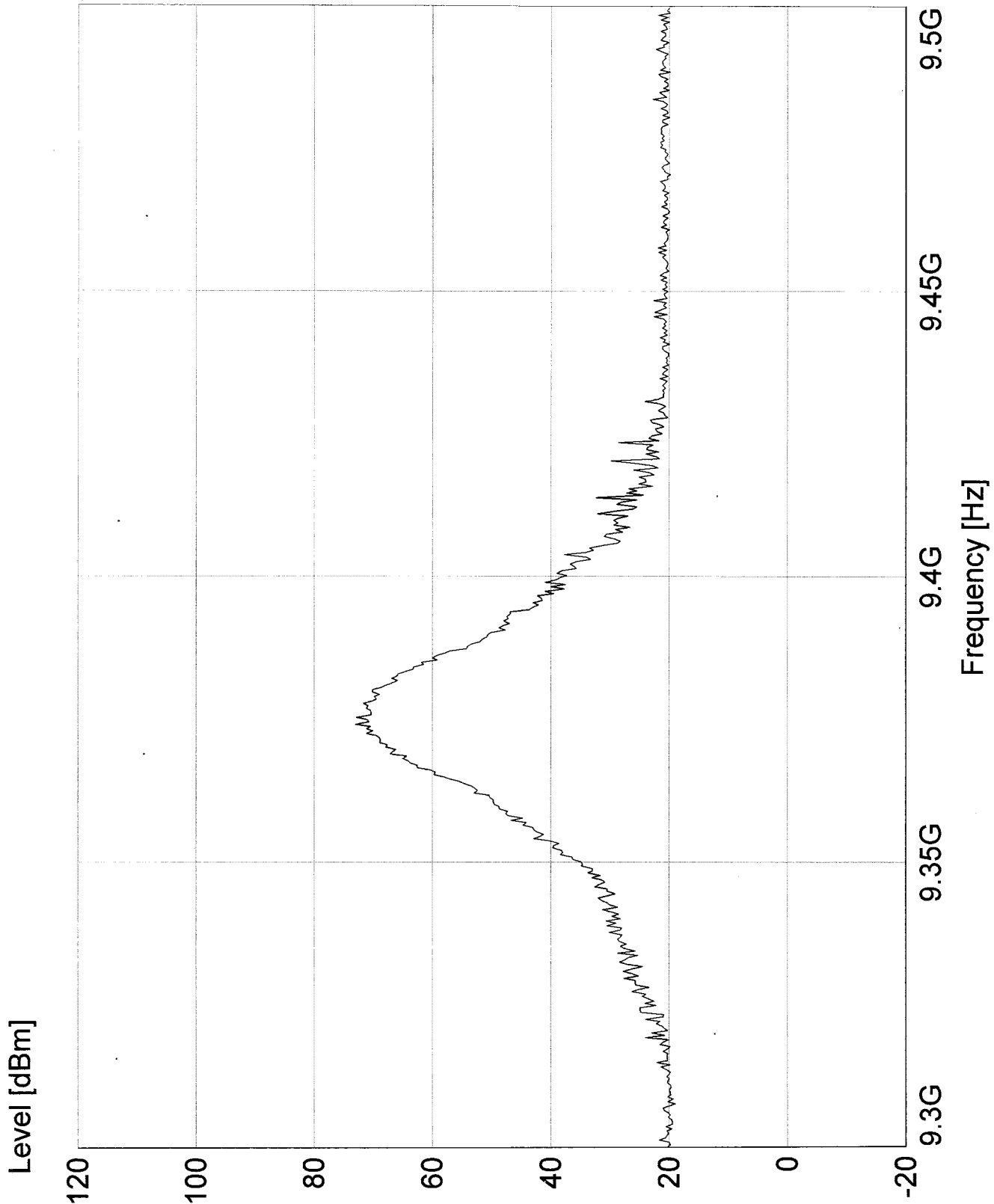


Level [dBm]



Customer:	Telephonics	Model:	RT-1601, FCC ID:02IMCB-RT-1601
Test:	Airborne Radar Transmitter	No.:	Temperature= -20C
Sample:		Notes:	Mode= Weather (WX)
Test:	FCC Part 87, Power Output		RBM/UBW= 10 MHz
Method:		Tech:	TS/RPW

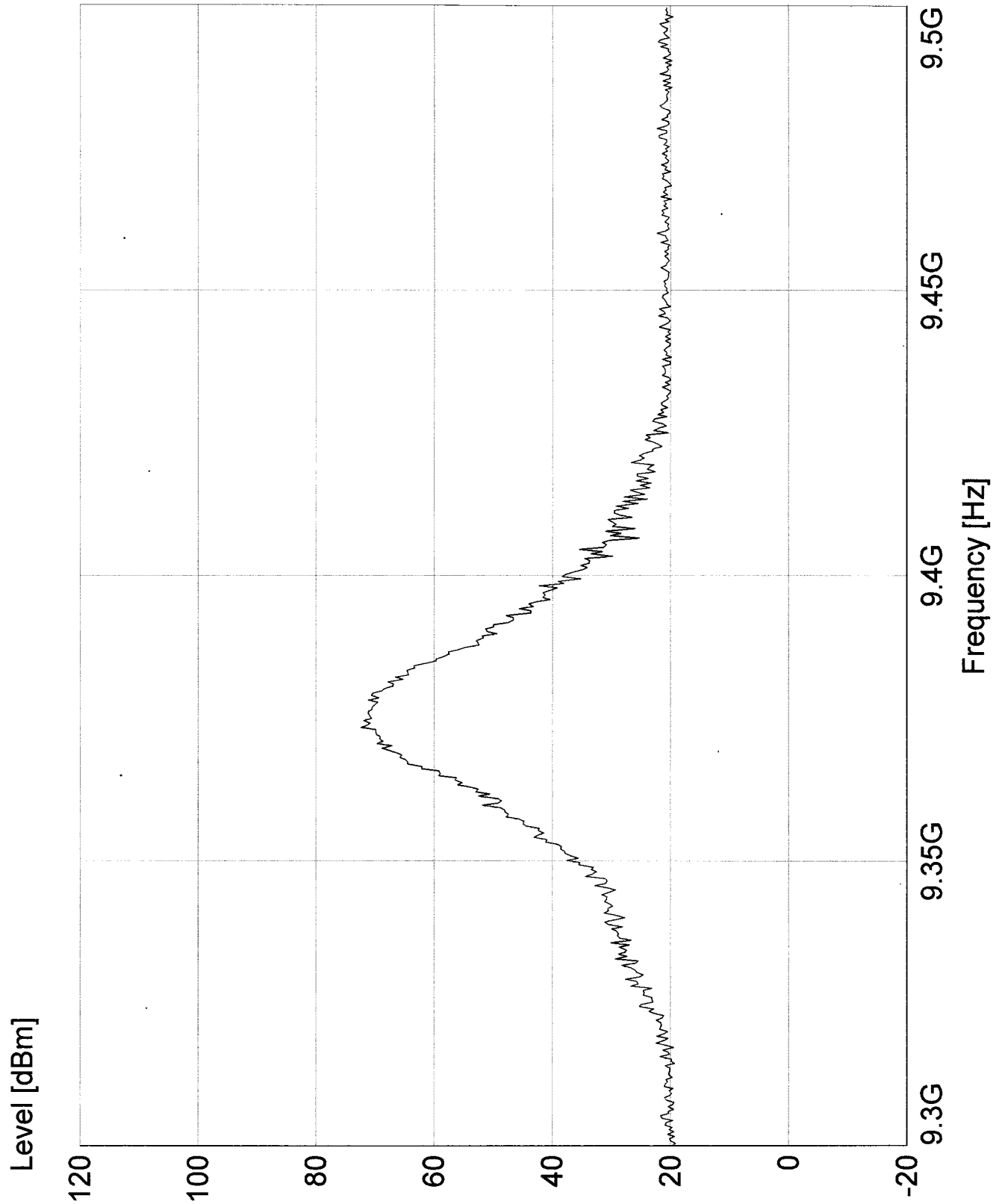
Report No. R-9105
Sheet 1 of 8



Report No. R-9105

Customer:	Telephonics	Model:	RT-1601, FCC ID:02IMCB-RT-1601
Test:	Airborne Radar Transmitter	No.:	Temperature= -10C
Sample:		Notes:	Mode= Weather(WX)
Test:	FCC Part 87, Power Output		RBW/UBW= 10 MHz
Method:		Tech.:	TS/RPW

Sheet 2 of 8

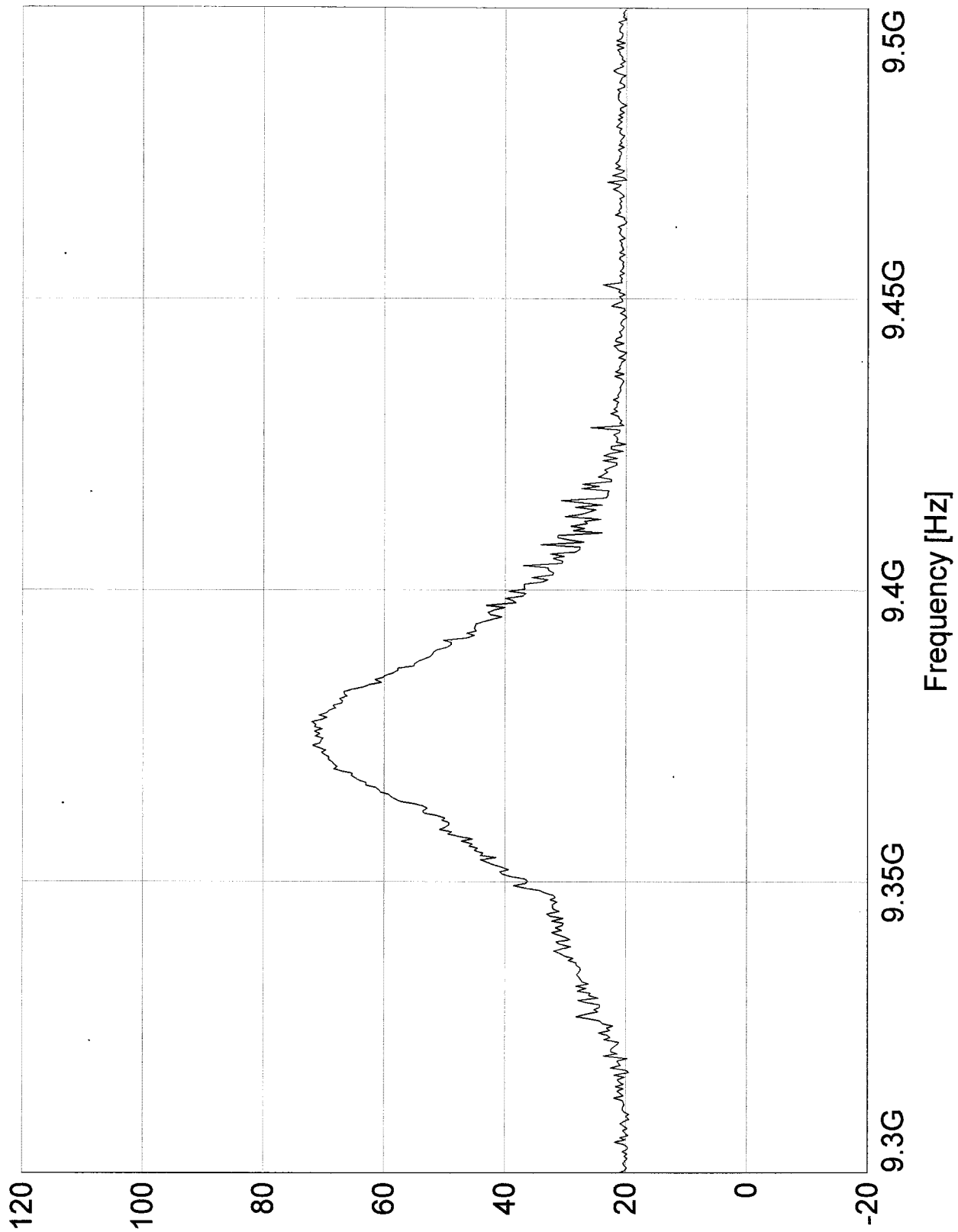


Report No. R-9105

Customer:	Telephonics	Model:	RT-1601, FCC ID:02IMCB-RT-1601
Test:	Airborne Radar Transmitter	No.:	Temperature= 0C
Sample:		Notes:	Mode= Weather (WX)
Test:	FCC Part 87, Power Output		RBW/VEW= 10 MHz
Method:		Tech.:	TS/RPM

Sheet 3 of 8

Level [dBm]

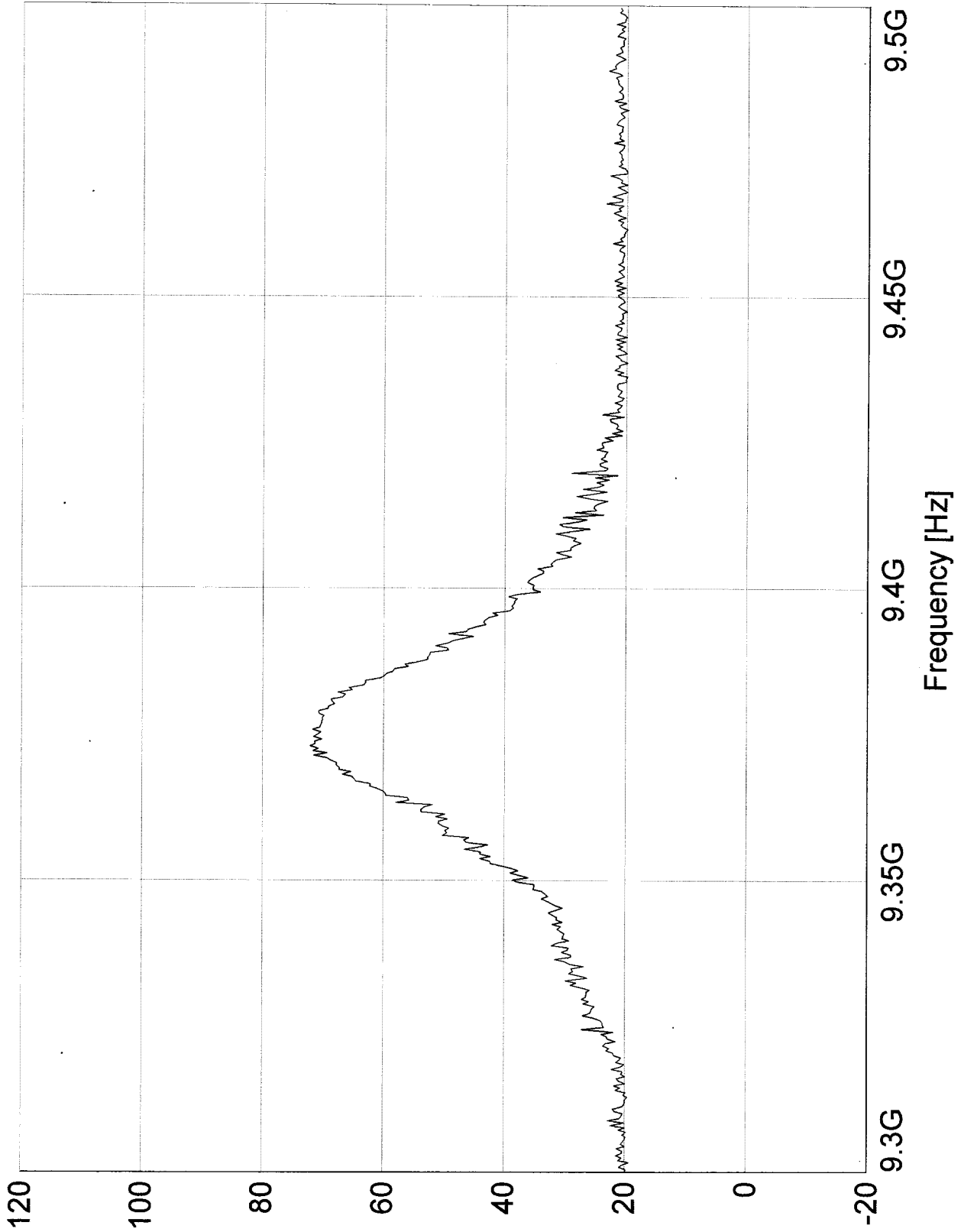


Report No. R-9105

Customer:	Telephonics	Model:	RT-1601, FCC ID: O2IMCB-RT-1601
Test:	Airborne Radar Transmitter	No.:	Temperature= +10C
Sample:		Notes:	Mode= Weather(WX)
Test:	FCC Part 87, Power Output	REW/UEW=	10 MHz
Method:		Tech:	
		TS/RPW	

Sheet 4 of 8

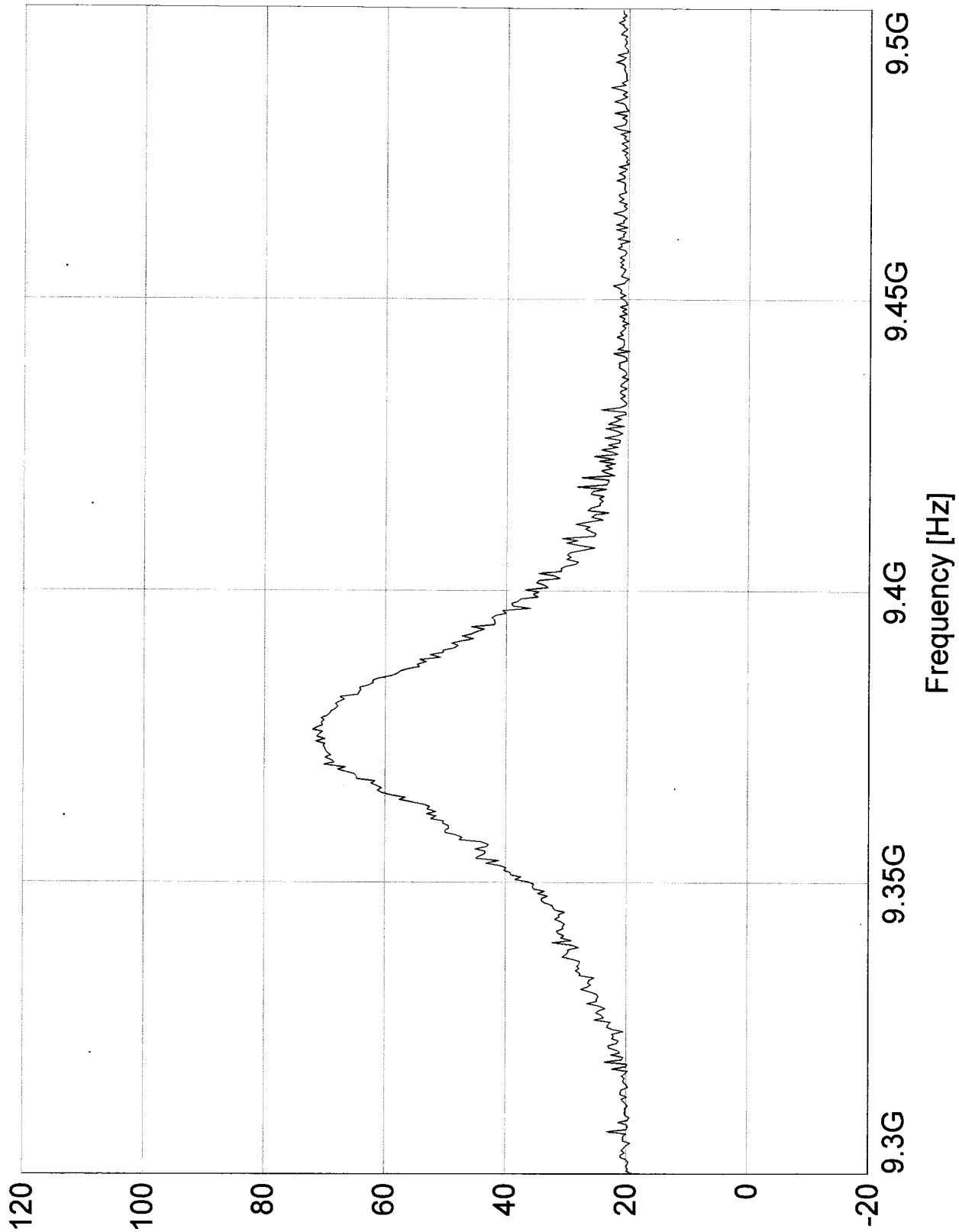
Level [dBm]



Report No. R-9105

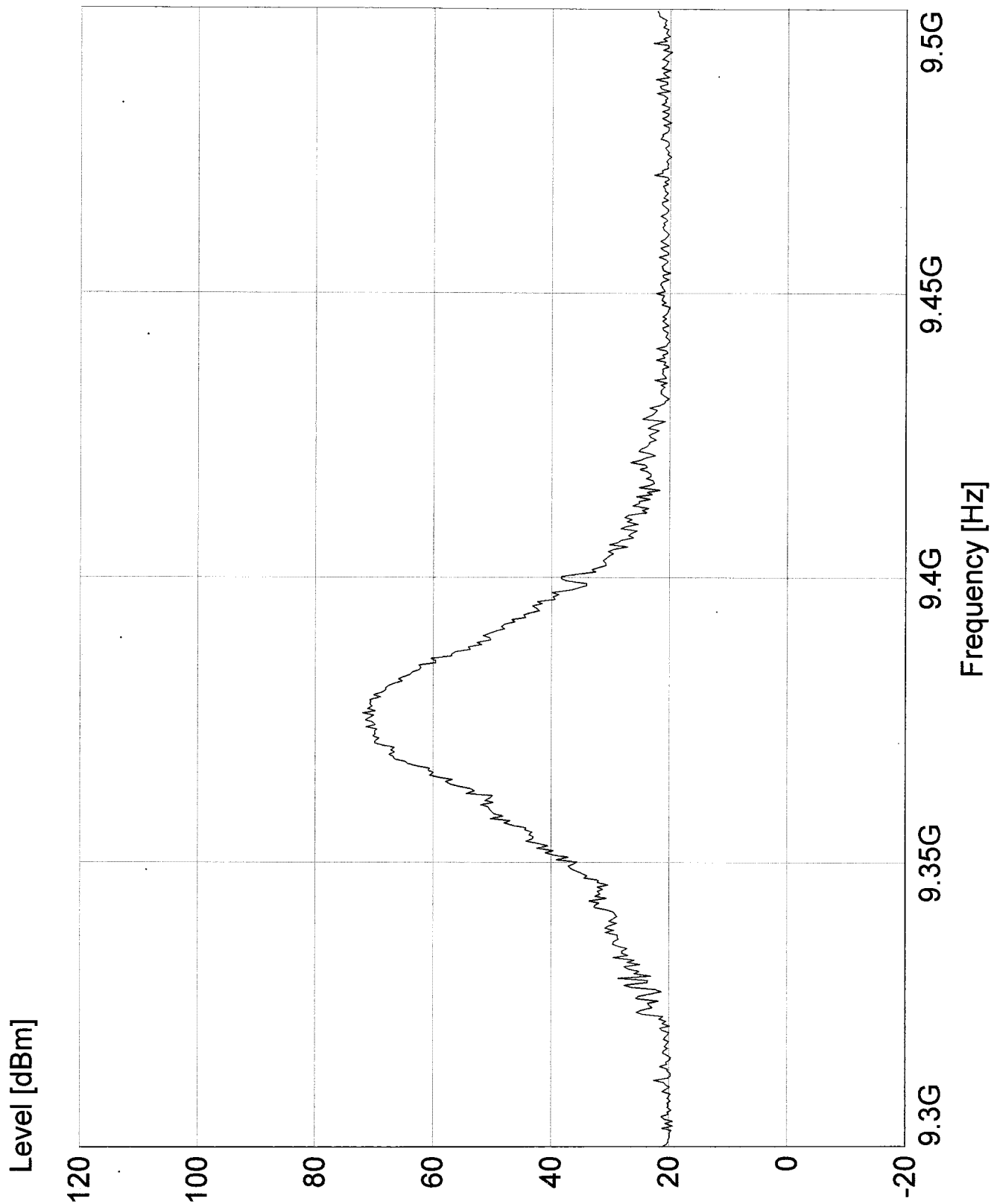
Customer:	Telephonics	Model:	RT-1601, FCC ID:02IMCB-RT-1601
Test:	Airborne Radar Transmitter	No.:	Temperature= +20C
Sample:		Notes:	Mode= Weather(WX)
Test:	FCC Part 87, Power Output		RBW/UBW= 10 MHz
Method:		Tech.:	TS/RPM
		Sheet 5 of 8	

Level [dBm]



Report No. R-9105

Customer:	Telephonics	Model:	RT-1601, FCC ID:02IMCB-RT-1601
Test:	Airborne Radar Transmitter	No.:	Temperature= +20C
Sample:		Notes:	Mode= Weather(WX)
Test:	FCC Part 87, Power Output	REBW/UEBW=	10 MHz
Method:		Tech.:	TS/RPM
		Sheet	6 of 8

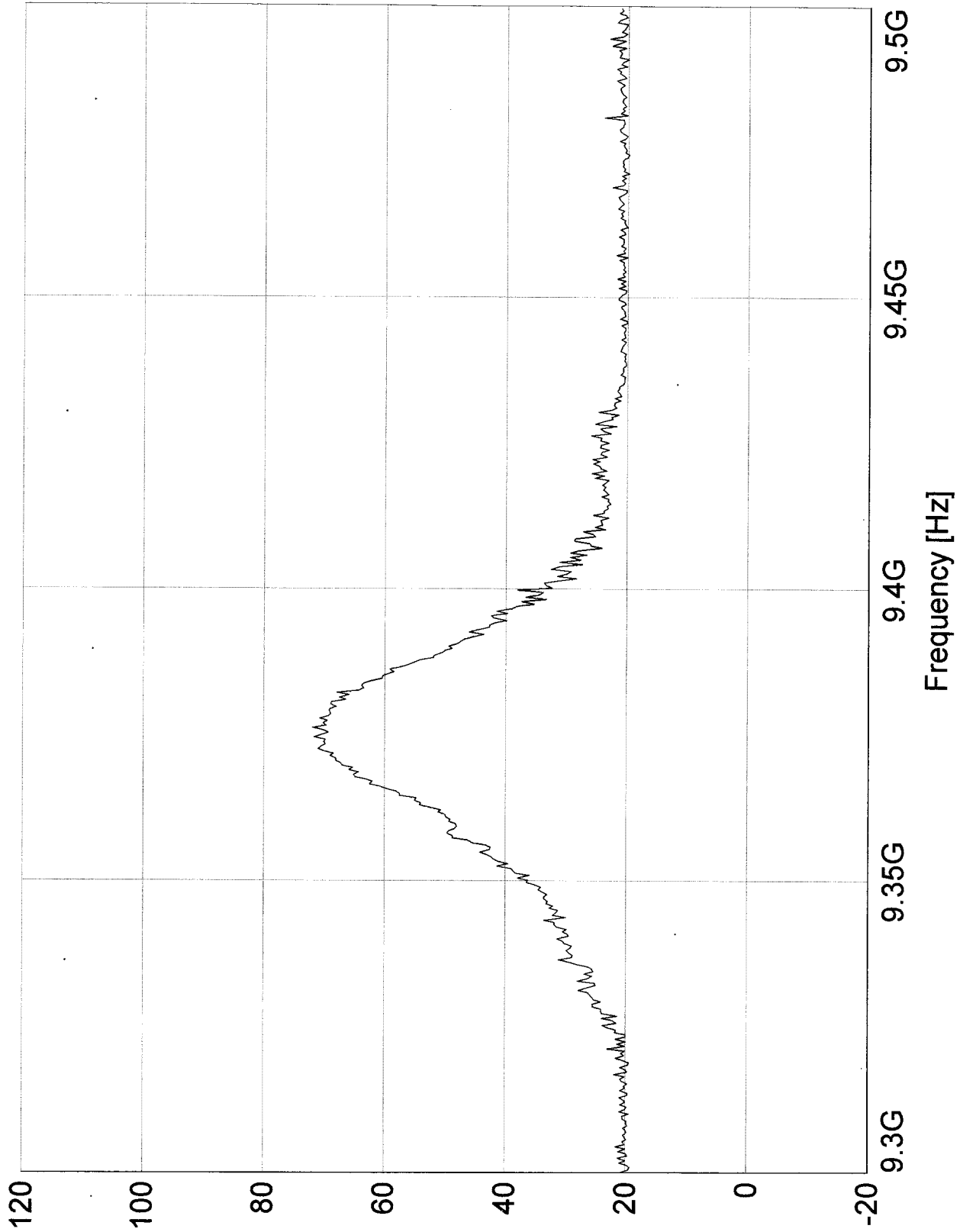


Report No. R-9105

Customer:	Telephonics	Model:	RT-1601, FCC ID:02IMCB-RT-1601
Test:	Airborne Radar Transmitter	No.:	Temperature= +40C
Sample:		Notes:	Mode= Weather(WX)
Test:	FCC Part 87, Power Output	Tech.:	RBW/UBW= 10 MHz
Method:			TS/RPM

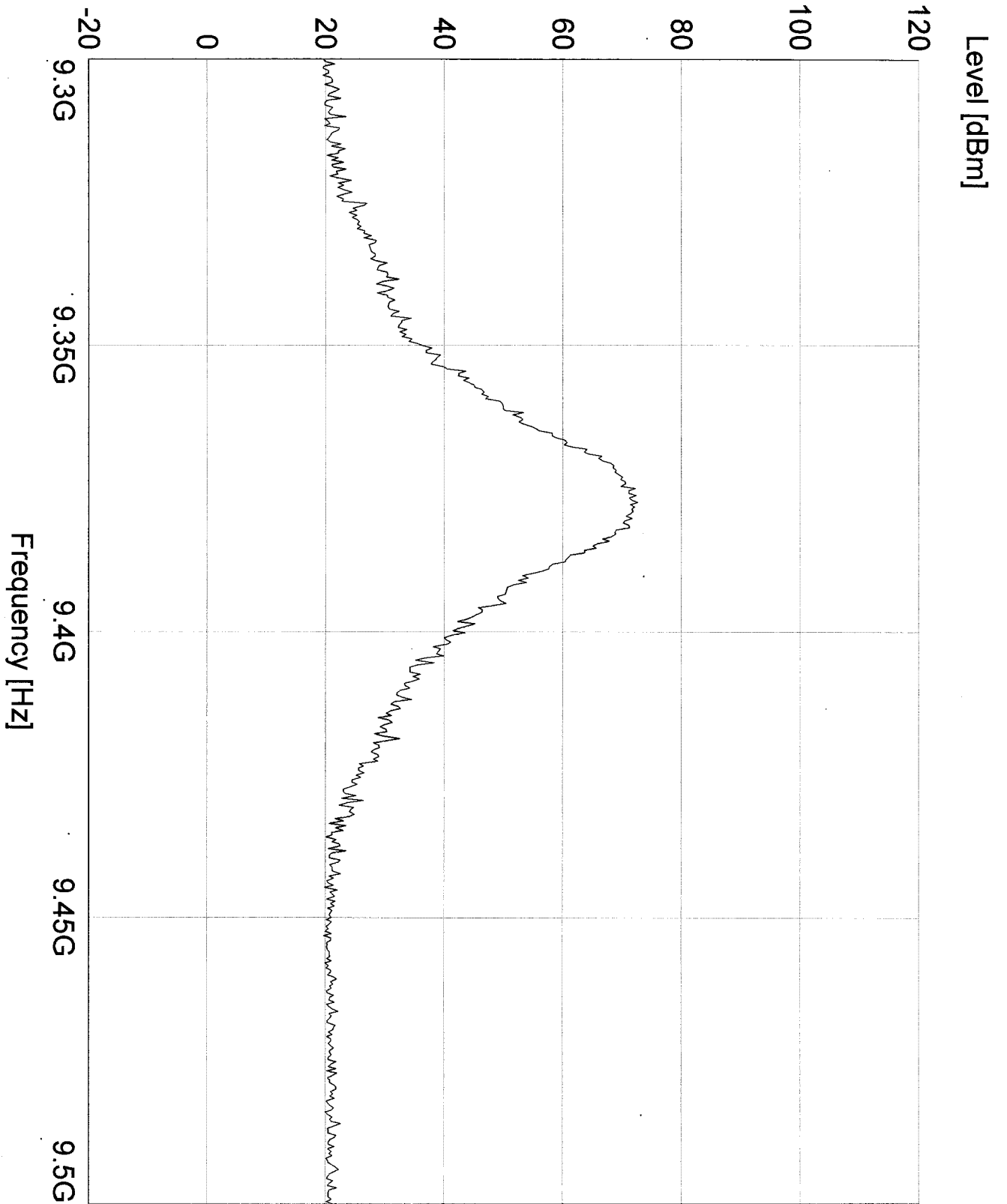
Sheet 7 of 8

Level [dBm]



Report No. R-9105

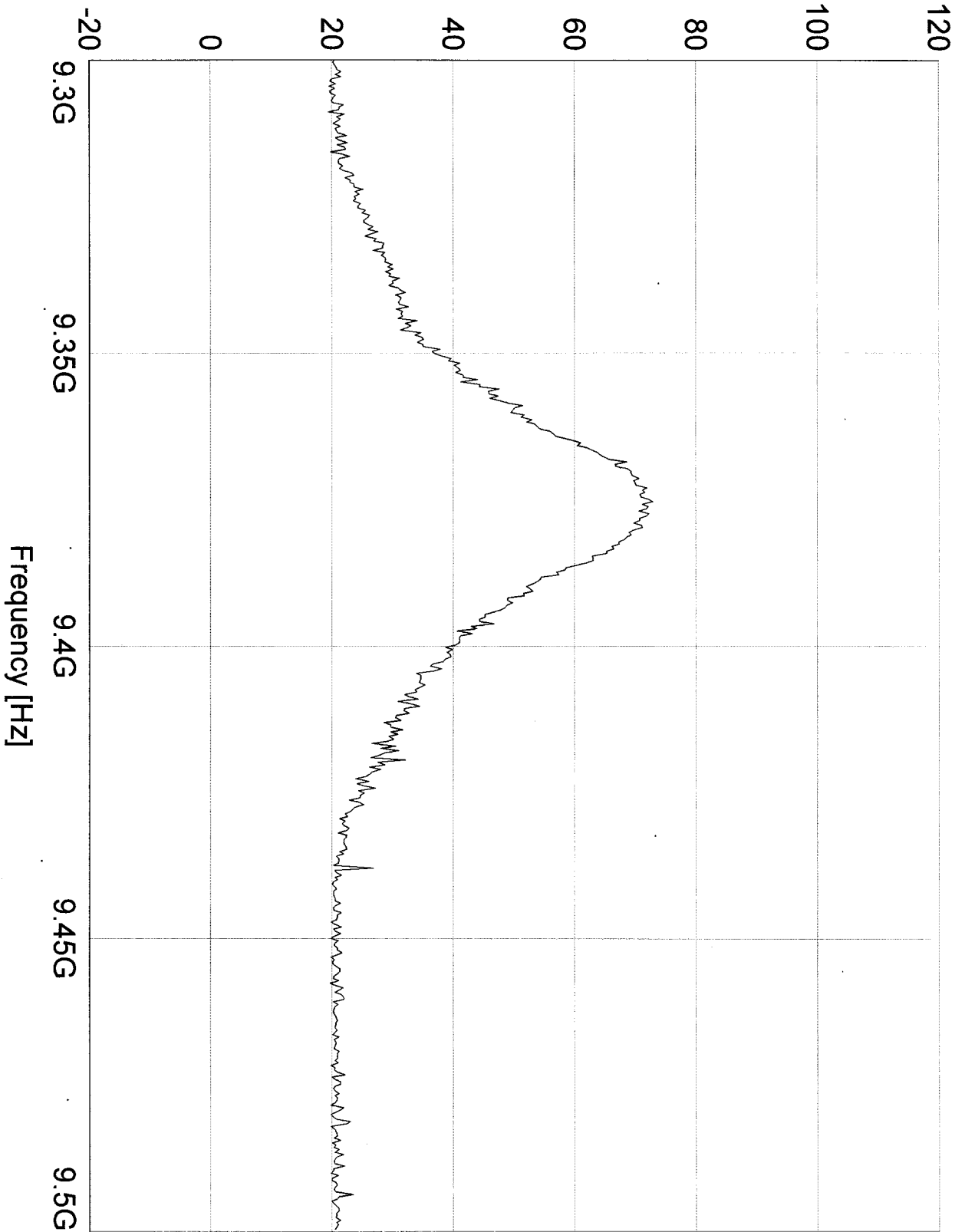
Customer: Telephonics	Model: RT-1601, FCC ID:02IMCB-RT-1601
Test: Airborne Radar Transmitter	Notes: Temperature= +50C
Sample: FCC Part 8T, Power Output	Notes: Mode= Weather(WX)
Test Method:	Notes: RBW/VBW= 10 MHz
	Tech.: TS/RPM
	Sheet 6 of 8



Report No. R-9105

Customer:	Telephonics	Model:	RT-1601, FCC ID:02IMCB-RT-1601
Test:	Airborne Radar Transmitter	No.:	Temperature= -20C
Sample:		Notes:	Mode= SEARCH
Test:	FCC Part 87, Power Output		RBW/UBW= 10 MHz
Method:		Tech:	TS/RPW

Level [dBm]

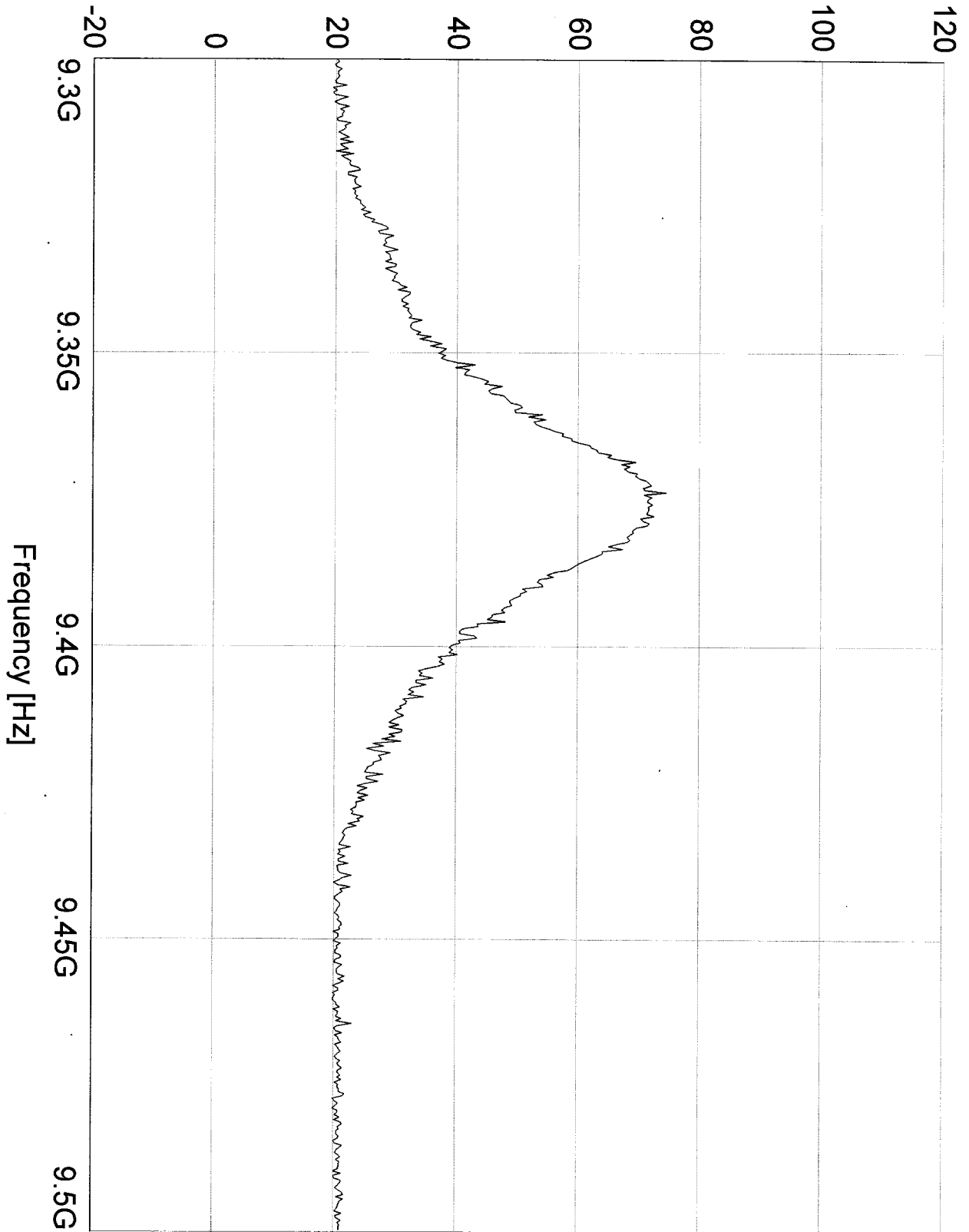


Report No. R-9105

Customer:	Telephonics	Model:	RT-1601, FCC ID:02IMCB-RT-1601
Test:	Airborne Radar Transmitter	No.:	Temperature= -10C
Sample:		Notes:	Mode= SEARCH
Test:	FCC Part 87, Power Output	Tech.:	RBM/UBW= 10 MHz
Method:			TS/RPW

Sheet 2 of 8

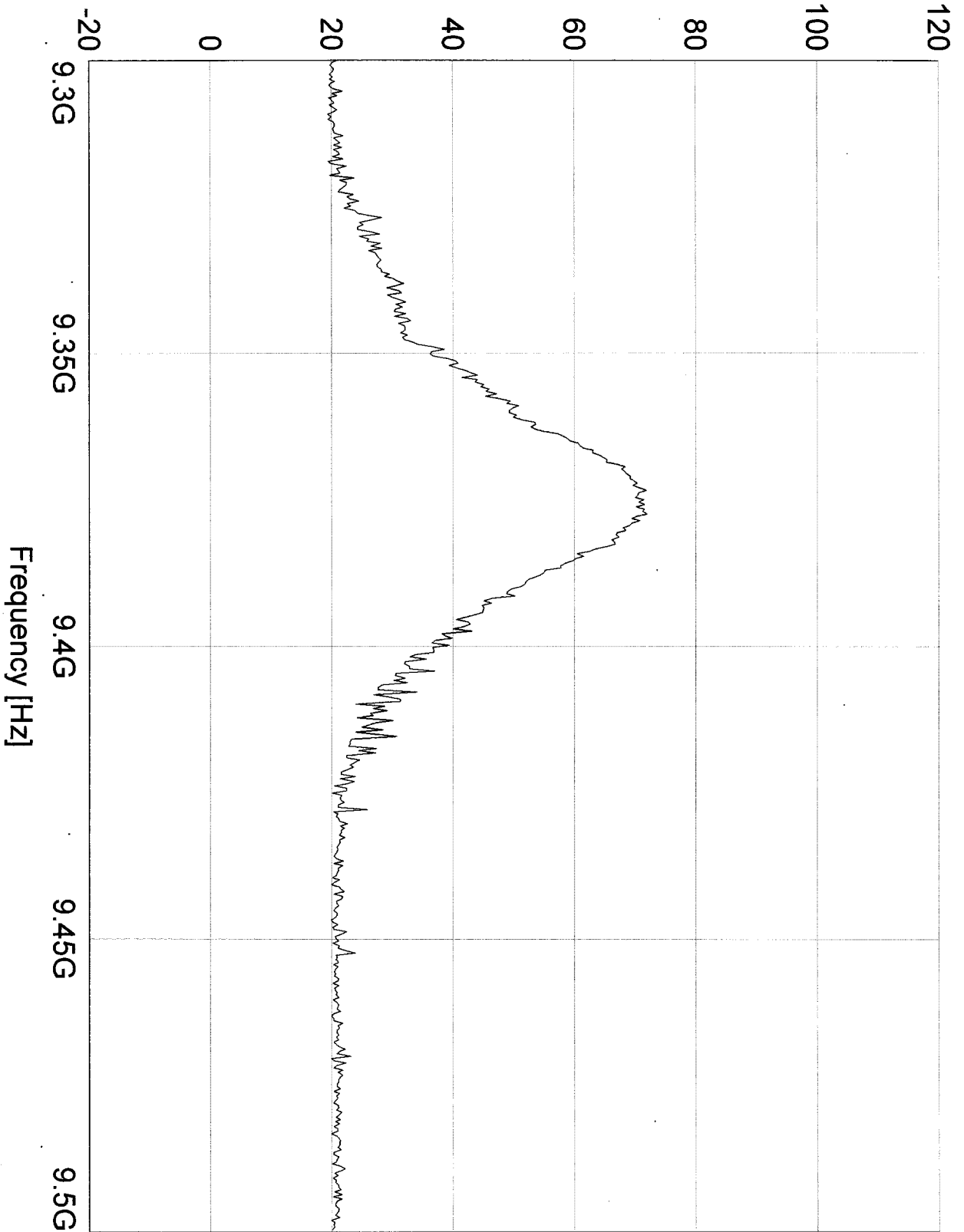
Level [dBm]



Report No. R-9105

Customer:	Telephonics	Model:	RT-1601, FCC ID:021MCB-RT-1601
Test:	Airborne Radar Transmitter	No.:	Temperature= 0C
Sample:		Notes:	Mode= SEARCH
Test:	FCC Part 87, Power Output		RBW/VBW= 10 MHz
Method:		Tech.:	TS/RPW

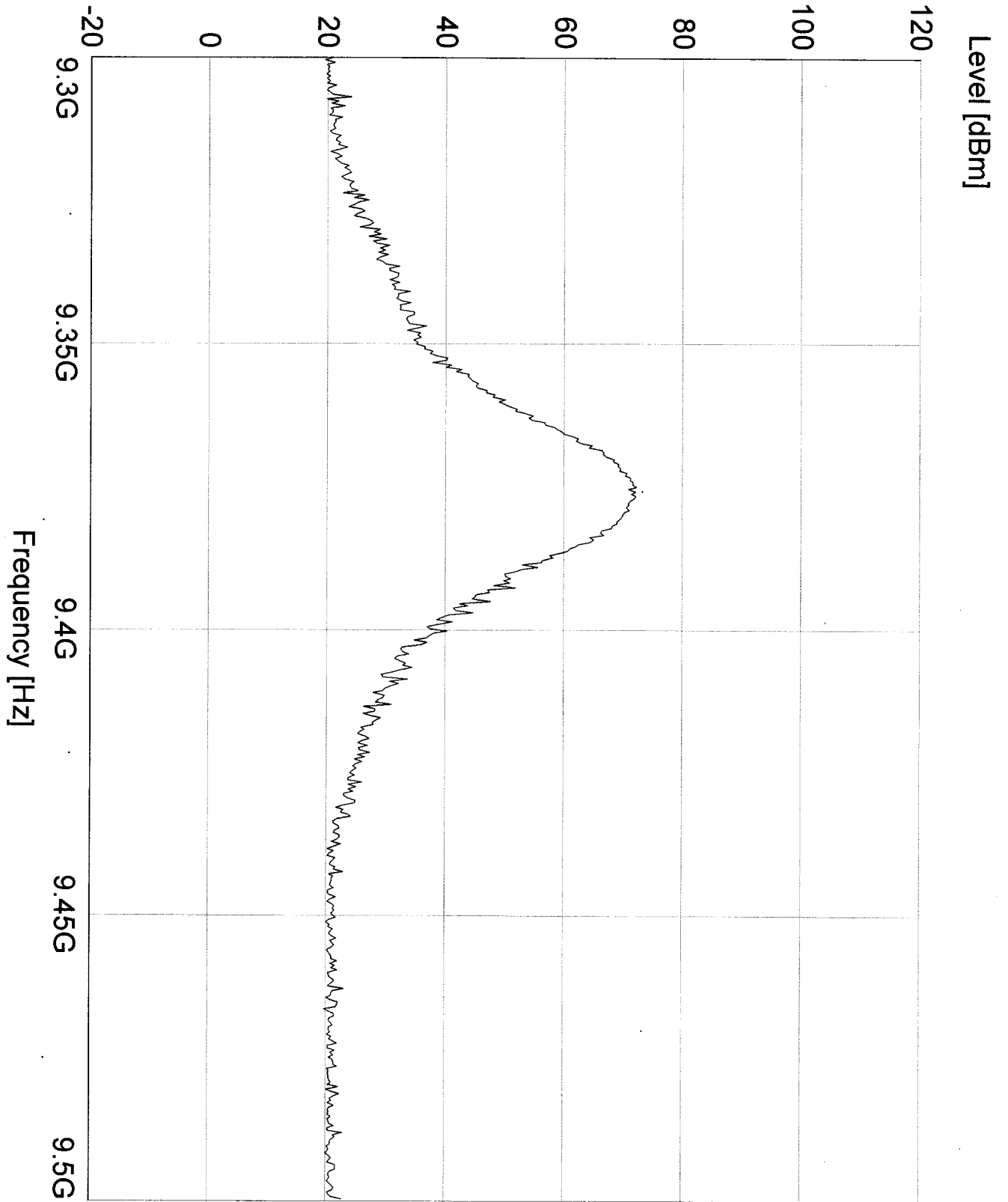
Level [dBm]



Report No. R-9105

Customer:	Telephonics	Model:	RT-1601, FCC ID:02IMCB-RT-1601
Test:	Airborne Radar Transmitter	No.:	Temperature= +10C
Sample:		Notes:	Mode= SEARCH
Test:	FCC Part 87, Power Output		RBW/UBW= 10 MHz
Method:		Tech.:	TS/RPW

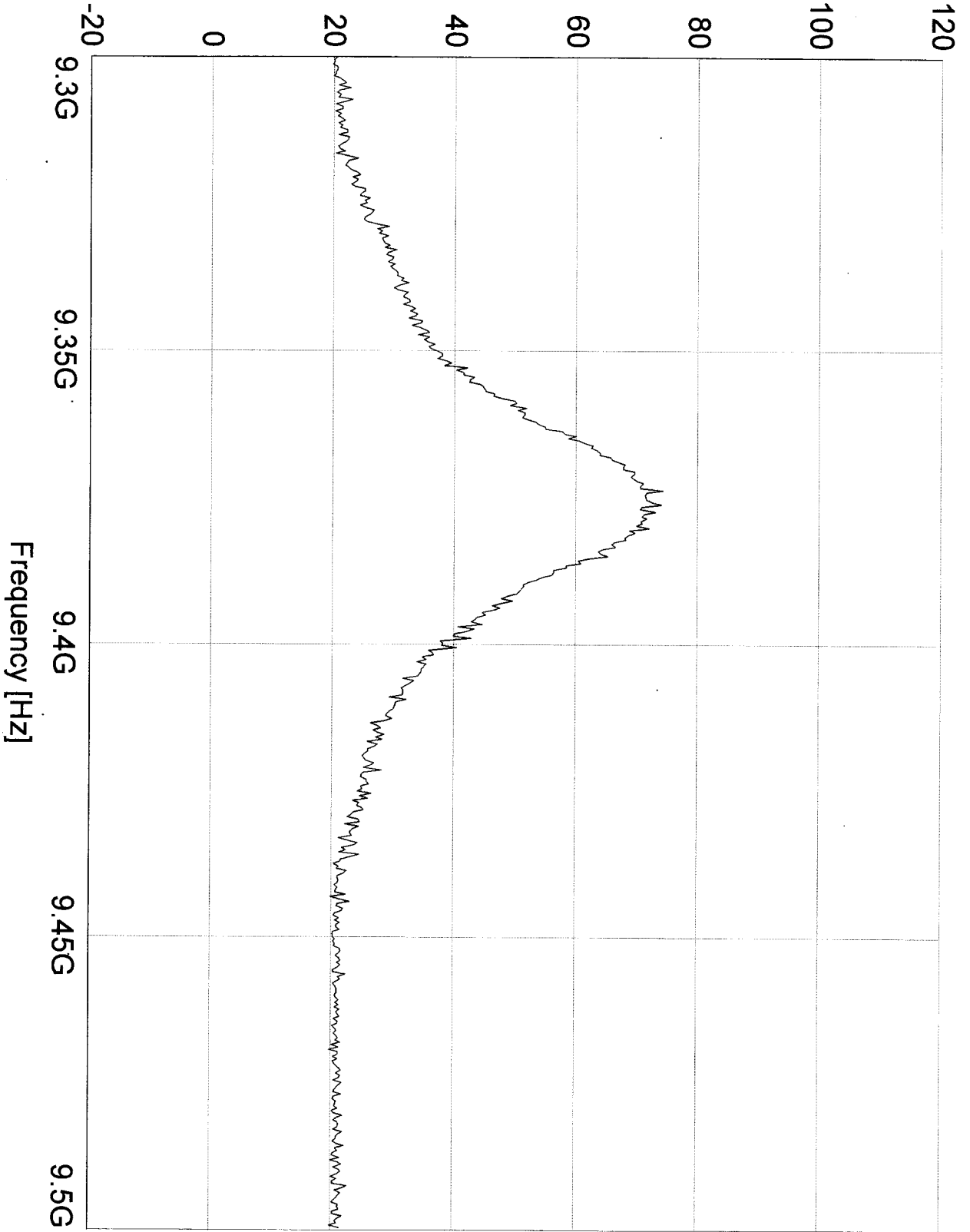
Sheet 4 of 8



Report No. R-9105

Customer:	Telephonics	Model:	RT-1601, FCC ID:02IMCB-RT-1601
Test:	Airborne Radar Transmitter	No.:	Temperature= +30C
Sample:		Notes:	Mode= SEARCH
Test Method:	FCC Part 87, Power Output	TS/RPM	RBW/VBW= 10 MHz
			Sheet 5 of 8

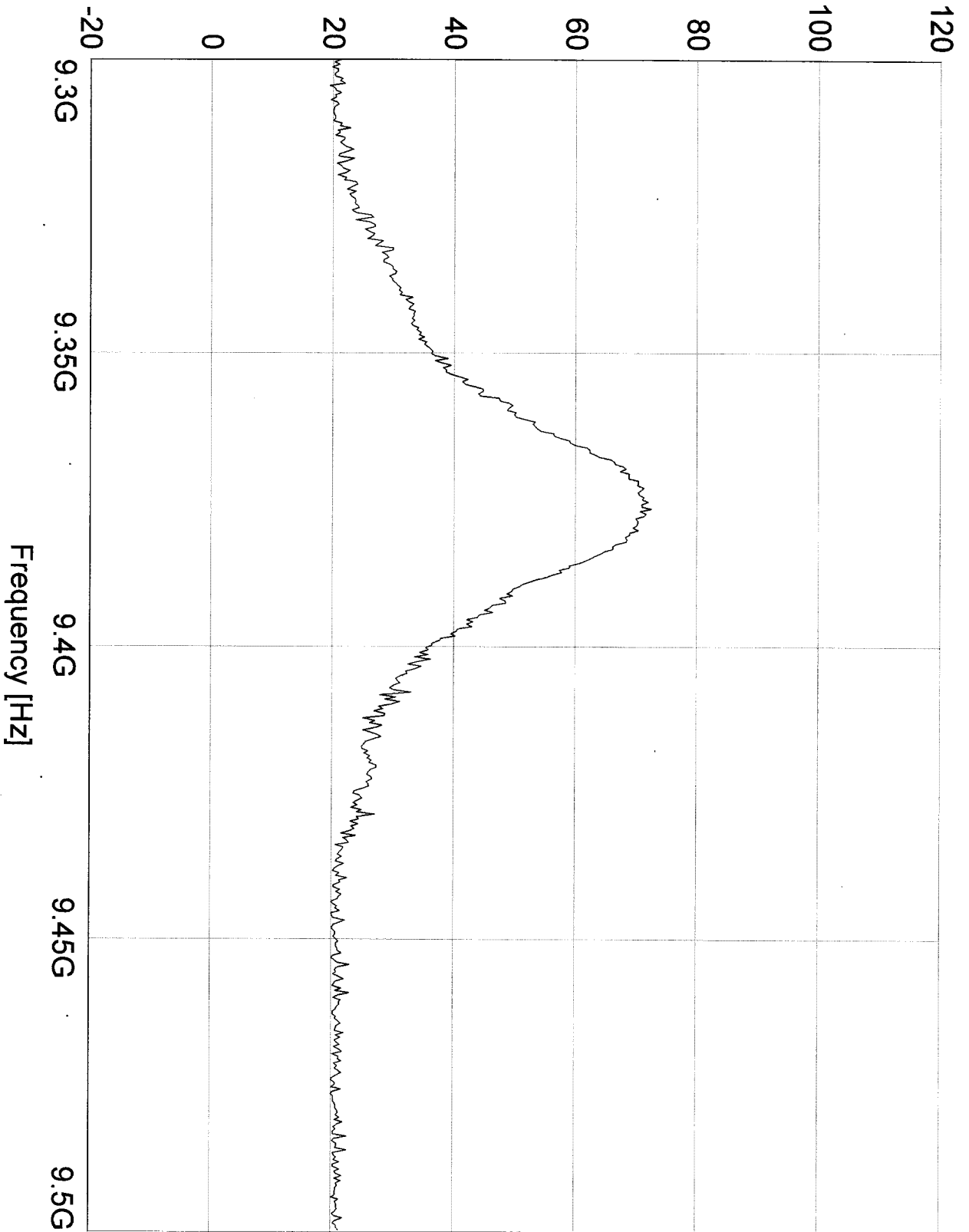
Level [dBm]



Report No. R-9105

Customer: Telephonics	Model: RT-1601, FCC ID:02IMCB-RT-1601
Test: Airborne Radar Transmitter	Temp: Temperature= +20C
Sample: FCC Part 87, Power Output	Mode= SEARCH
Test:	RES/UBW= 10 MHz
Method:	Tech: TS/RPW
	Sheet 6 of 8

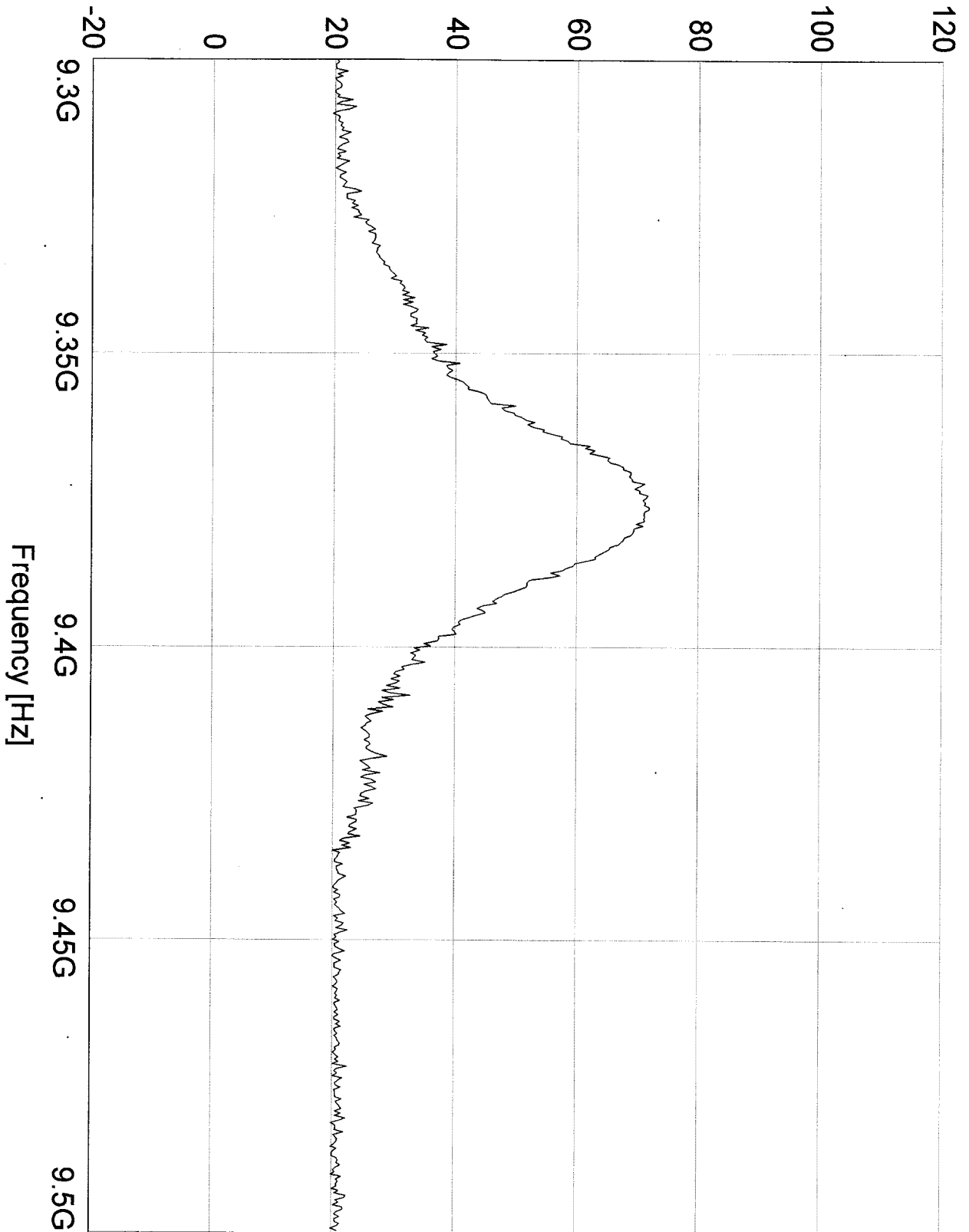
Level [dBm]



Report No. R-9105

Customer.:	Telephonics	Model	RT-1601, FCC ID:02IMCB-RT-1601
Test	Airborne Radar Transmitter	No.	Temperature= +40C
Sample:		Notes:	Mode= SEARCH
Test	FCC Part 87, Power Output		RBW/UBW= 10 MHz
Method:		Tech.:	TS/RPM

Level [dBm]



Report No. R-9105

Customer: Telephonics	Model: RT-1601, FCC ID:02IMCB-RT-1601
Test: Airborne Radar Transmitter	No.: Temperature= +50C
Sample: FCC Part 87, Power Output	Notes: Mode= SEARCH
Test: Method:	REW/UBW= 10 MHz
	Tech: TS/RPM