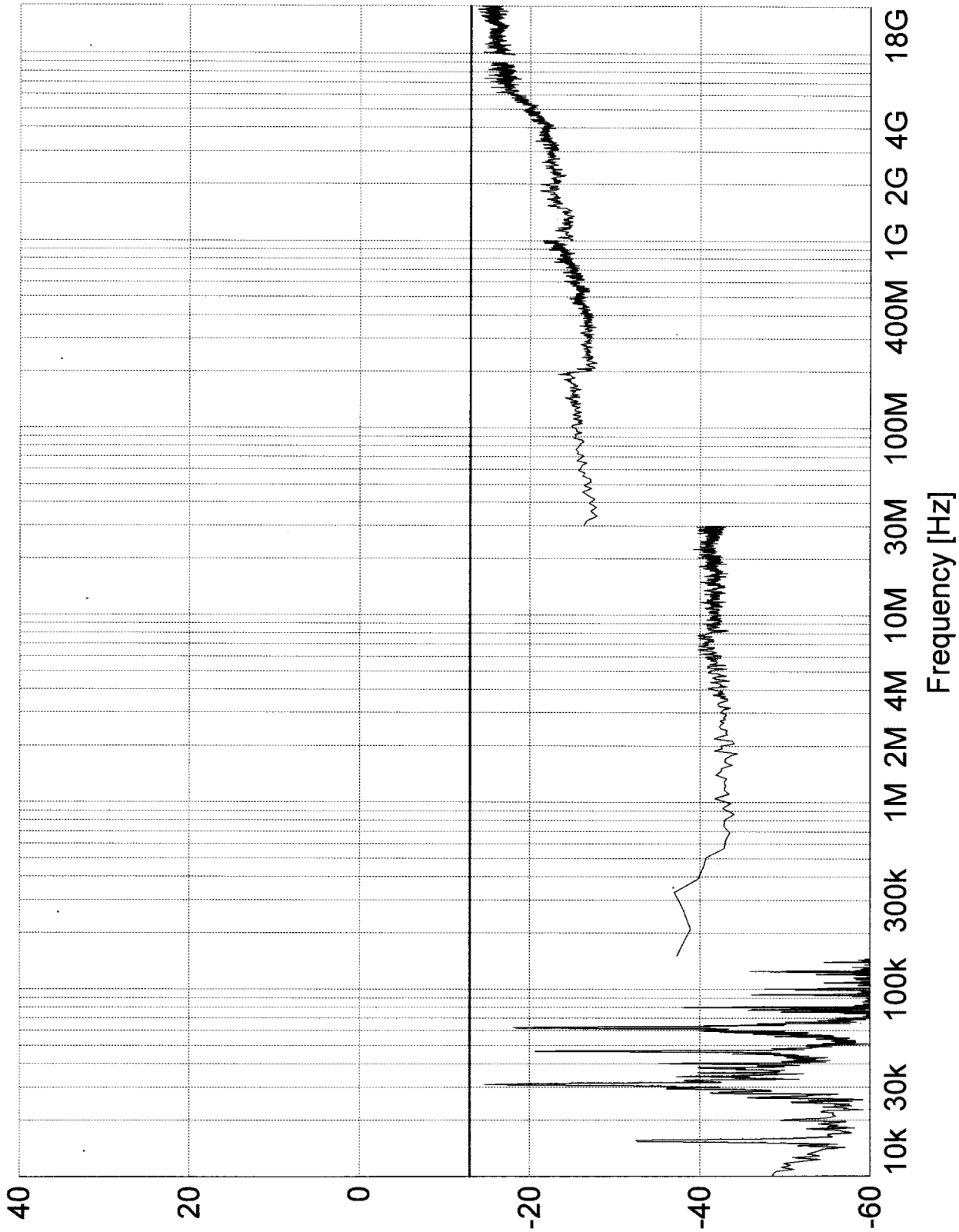
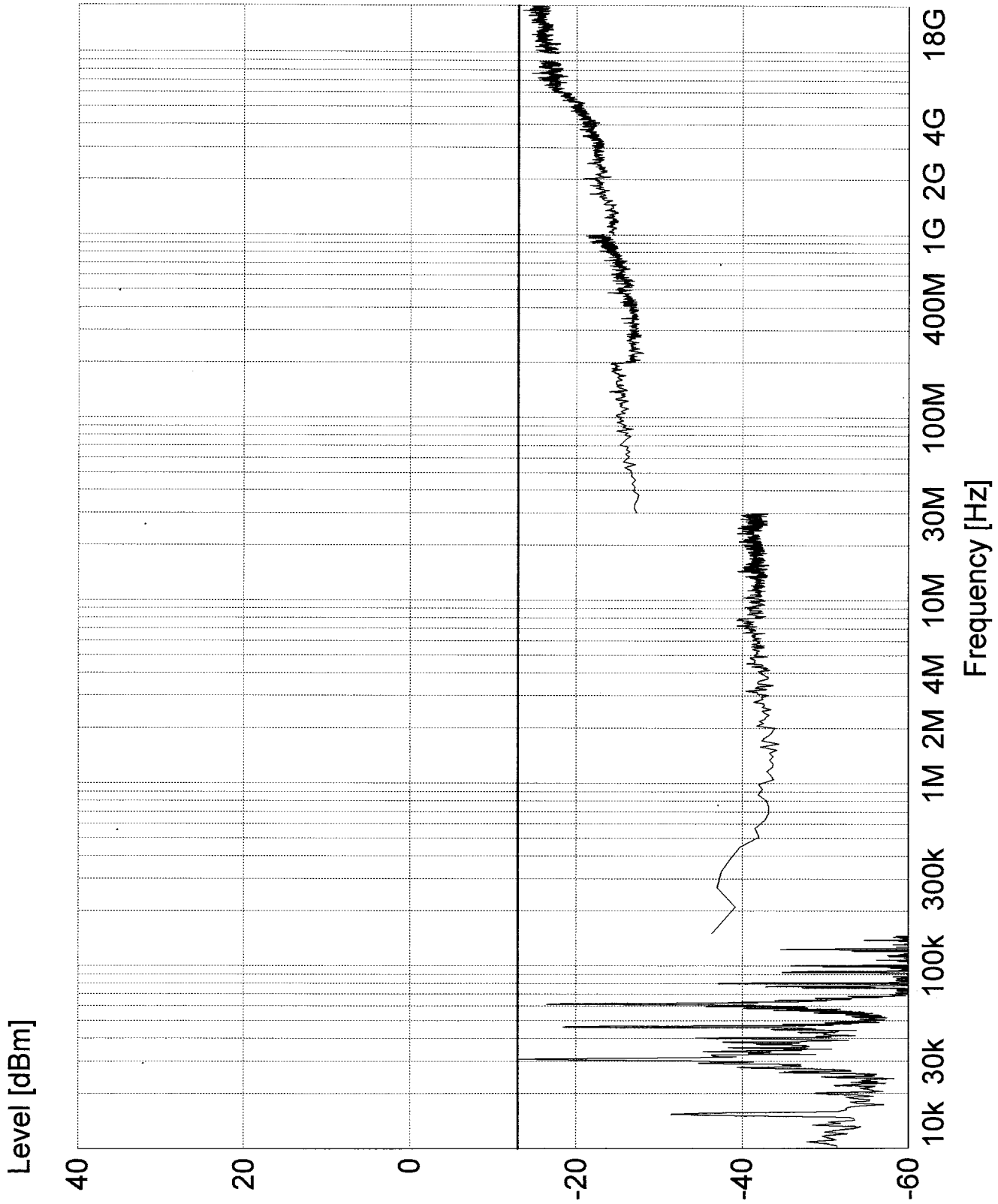


Level [dBm]



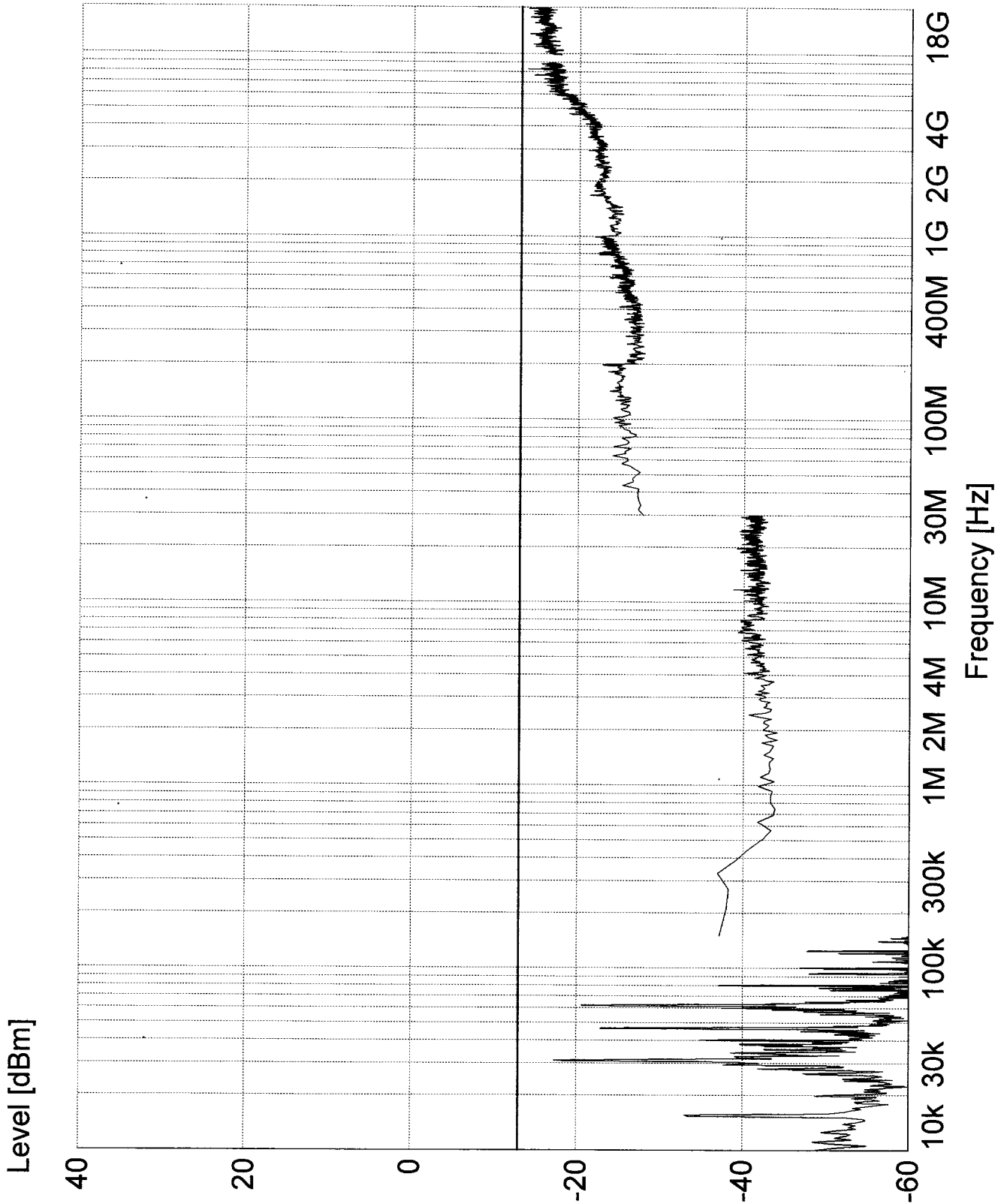
Report No. R-9105

Customer:	Telephonics	Model:	RT-1601, FCC ID:02IMCB-RT-1601
Test:	Airborne Radar Transmitter	No.:	Temperature= -20C
Sample:	87.139(a)(3), Antenna conducted Spurious	Notes:	Mode= SEARCH
Test:	emissions, 10 kHz to 18 GHz	Tech.:	TS/rpw JP
Method:			Sheet 1 of 8



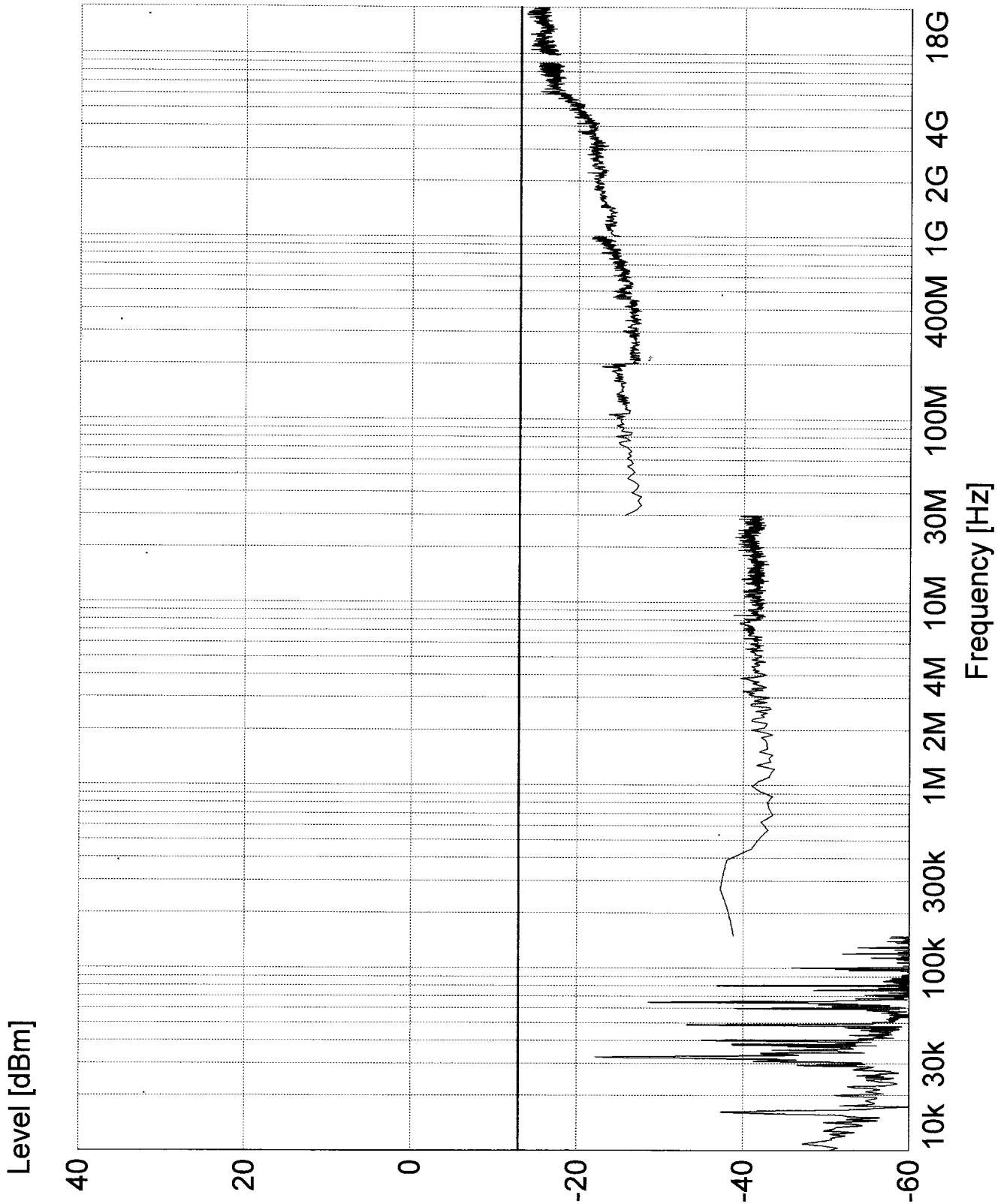
Report No. R-9105

Customer:	Telephonics	Model:	RT-1601, FCC ID:02IMCB-RT-1601
Test:	Airborne Radar Transmitter	No.:	Temperature= -10C
Sample:	87.139(a)(3), Antenna conducted Spurious	Notes:	Mode= SEARCH
Test:	emissions, 10 kHz to 18 GHz	Tech.:	TS/RPW
Method:			Sheet 2 of 8



Report No. R-9105

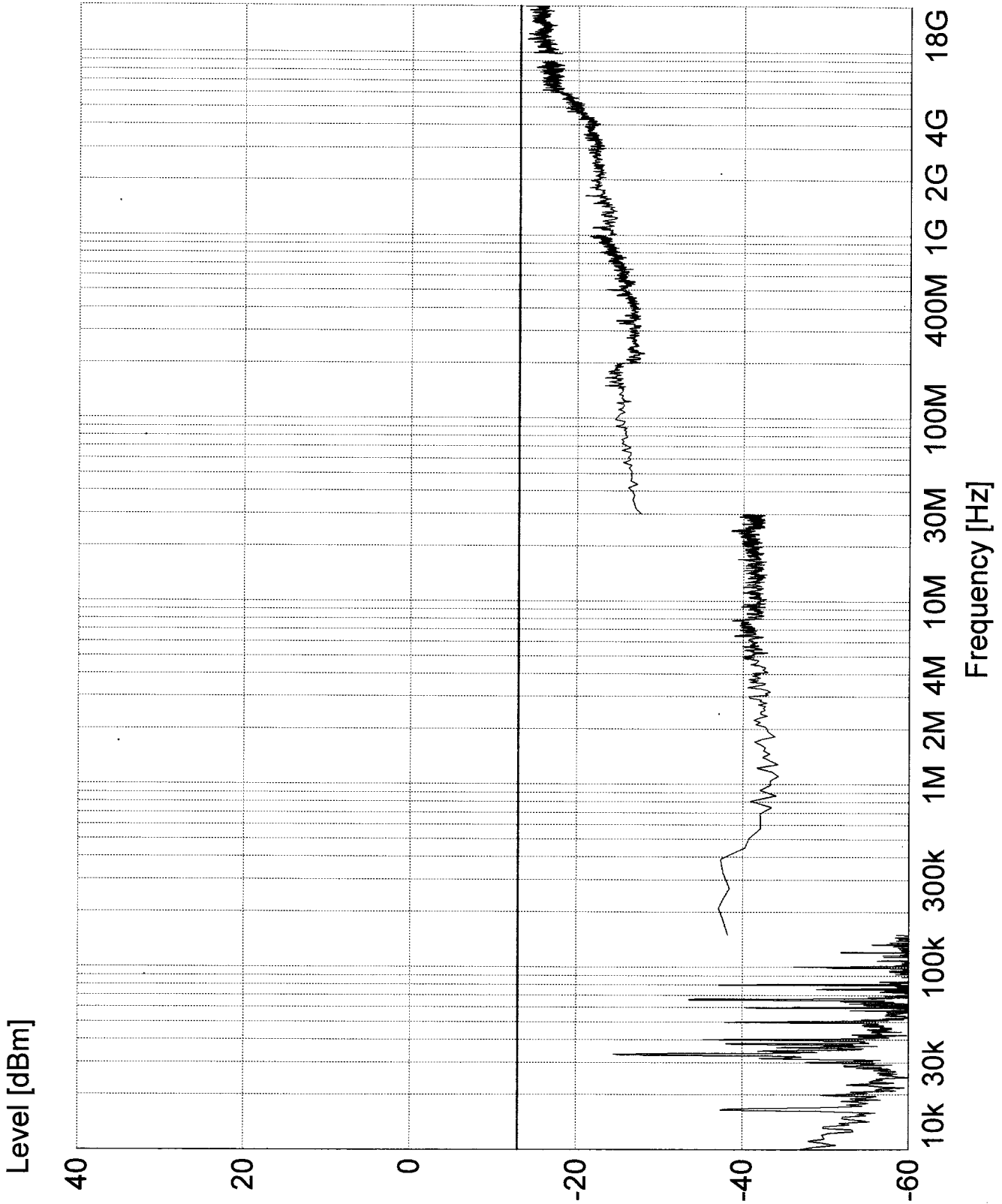
Customer:	Telephonics	Model:	RT-1601, FCC ID:02IMCB-RT-1601
Test:	Airborne Radar Transmitter	Temp.:	Temperature= 0C
Sample:	87.139(a)(3), Antenna conducted Spurious	Notes:	Mode= SEARCH
Test:	emissions, 10 kHz to 18 GHz	Tech.:	TS/RPW
Method:			Sheet 3 of 8



Report No. R-9105

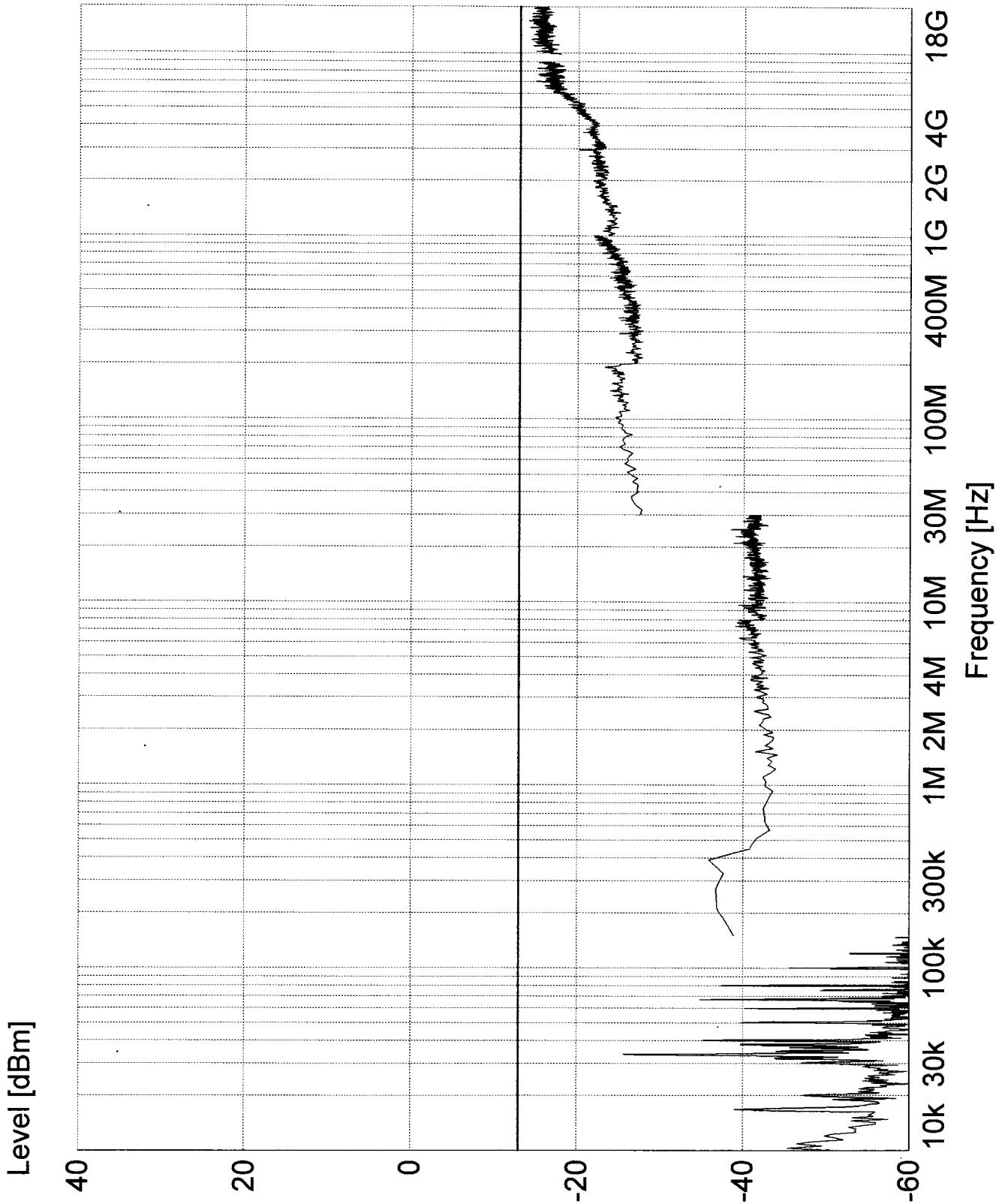
Customer:	Telephonics	Model:	RT-1601, FCC ID:02IMCB-RT-1601
Test:	Airborne Radar Transmitter	Temp:	Temperature= +10C
Sample:	87.139(a)(3), Antenna conducted Spurious emissions, 10 kHz to 18 GHz	Notes:	Mode= SEARCH
Test Method:		Tech:	TS/RPW

Sheet 4 of 8



Report No. R-9105

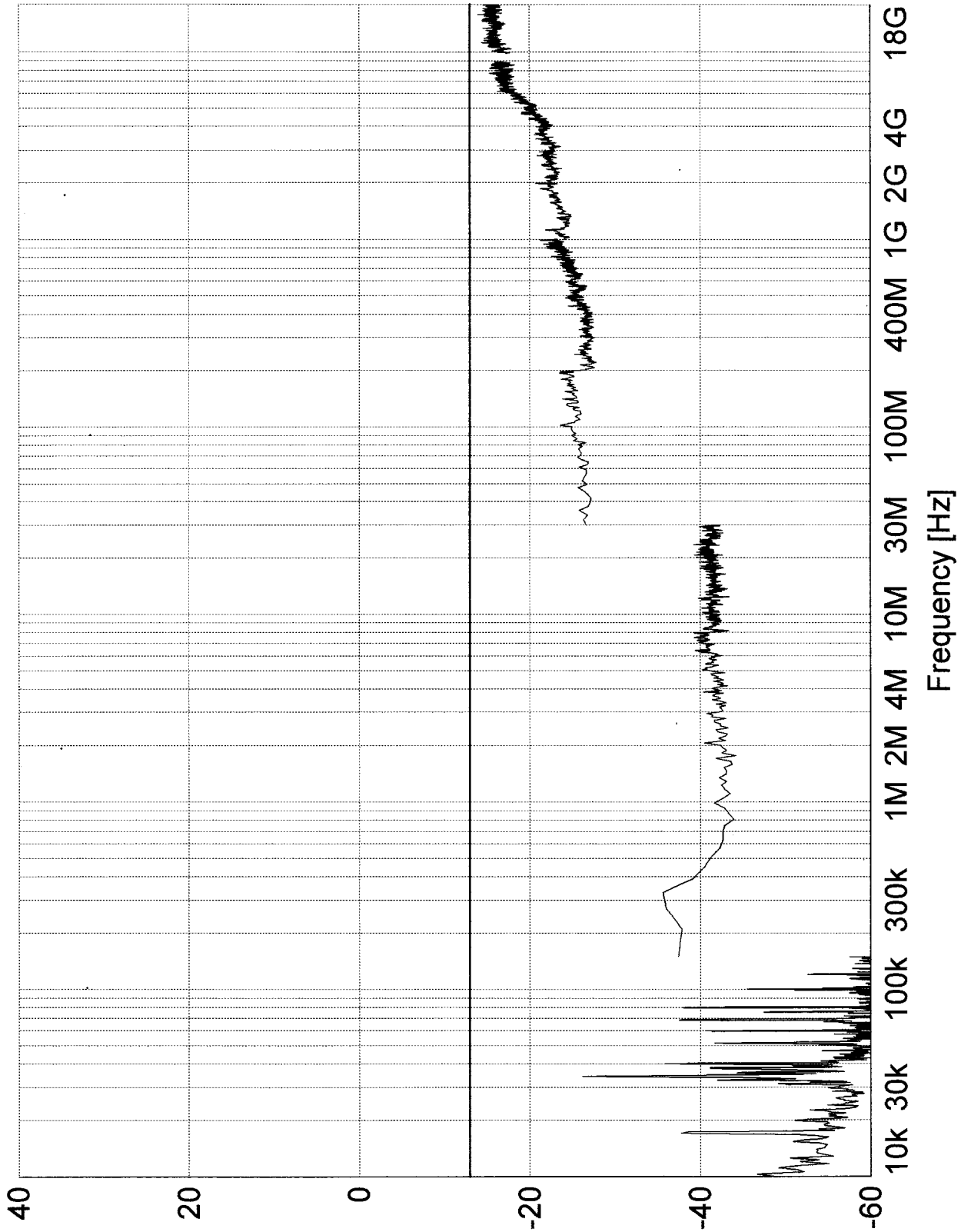
Customer:	Telephonics	Model:	RT-1601, FCC ID:021MGB-RT-1601
Test:	Airborne Radar Transmitter	No.:	Temperature= +20C
Sample:	87.139(a)(3), Antenna conducted Spurious emissions, 10 kHz to 18 GHz	Notes:	Mode= SEARCH
Test Method:		Tech.:	TS-RPM



Report No. R-9105

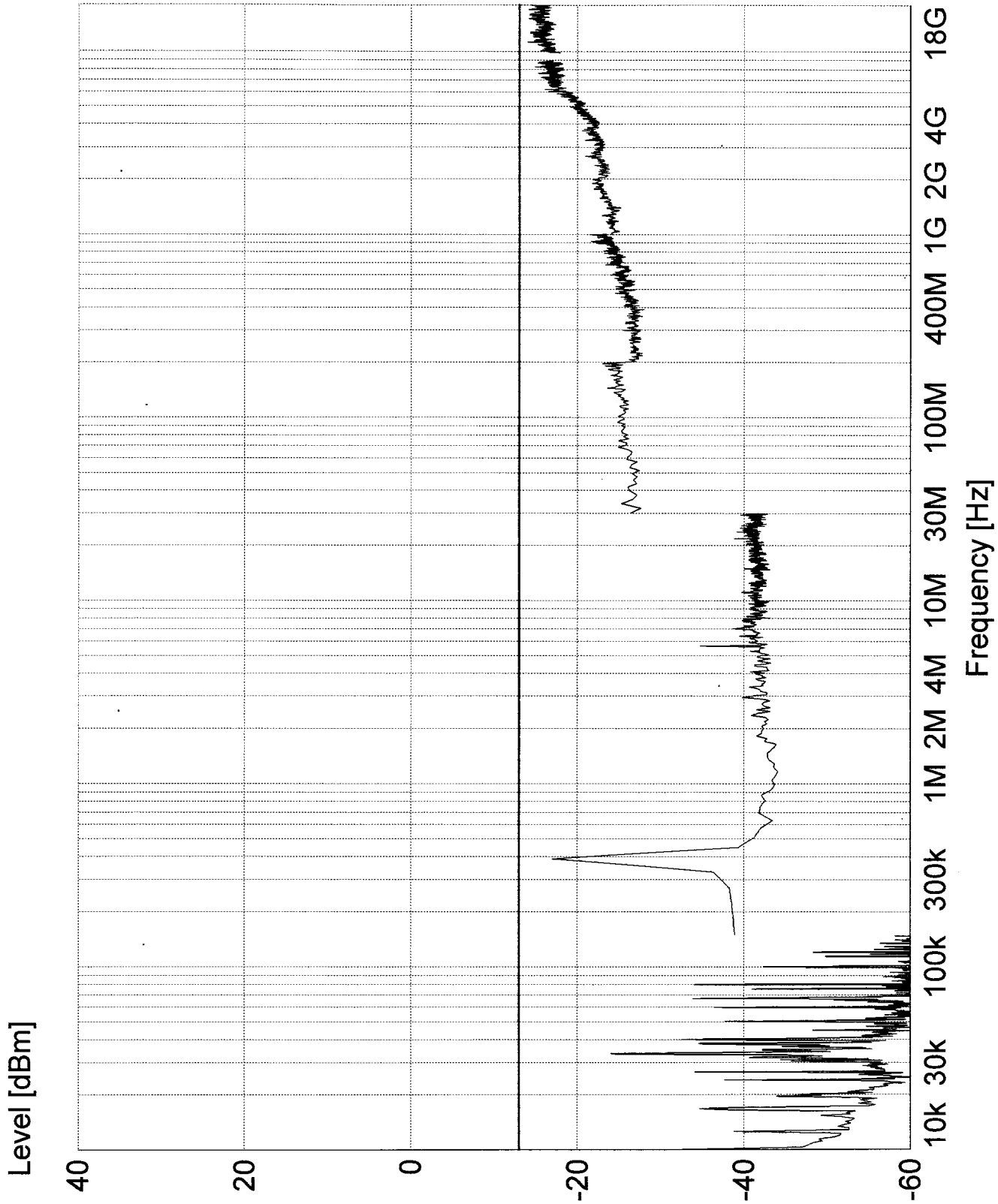
Customer:	Telephonics	Model:	RT-1601, FCC ID:02IMCB-RT-1601
Test:	Airborne Radar Transmitter	No.:	Temperature= +30C
Sample:	87.139(a)(3), Antenna conducted Spurious emissions, 10 kHz to 18 GHz	Notes:	Mode= SEARCH
Test Method:		Tech.:	TS/RPW

Level [dBm]



Report No. R-9105

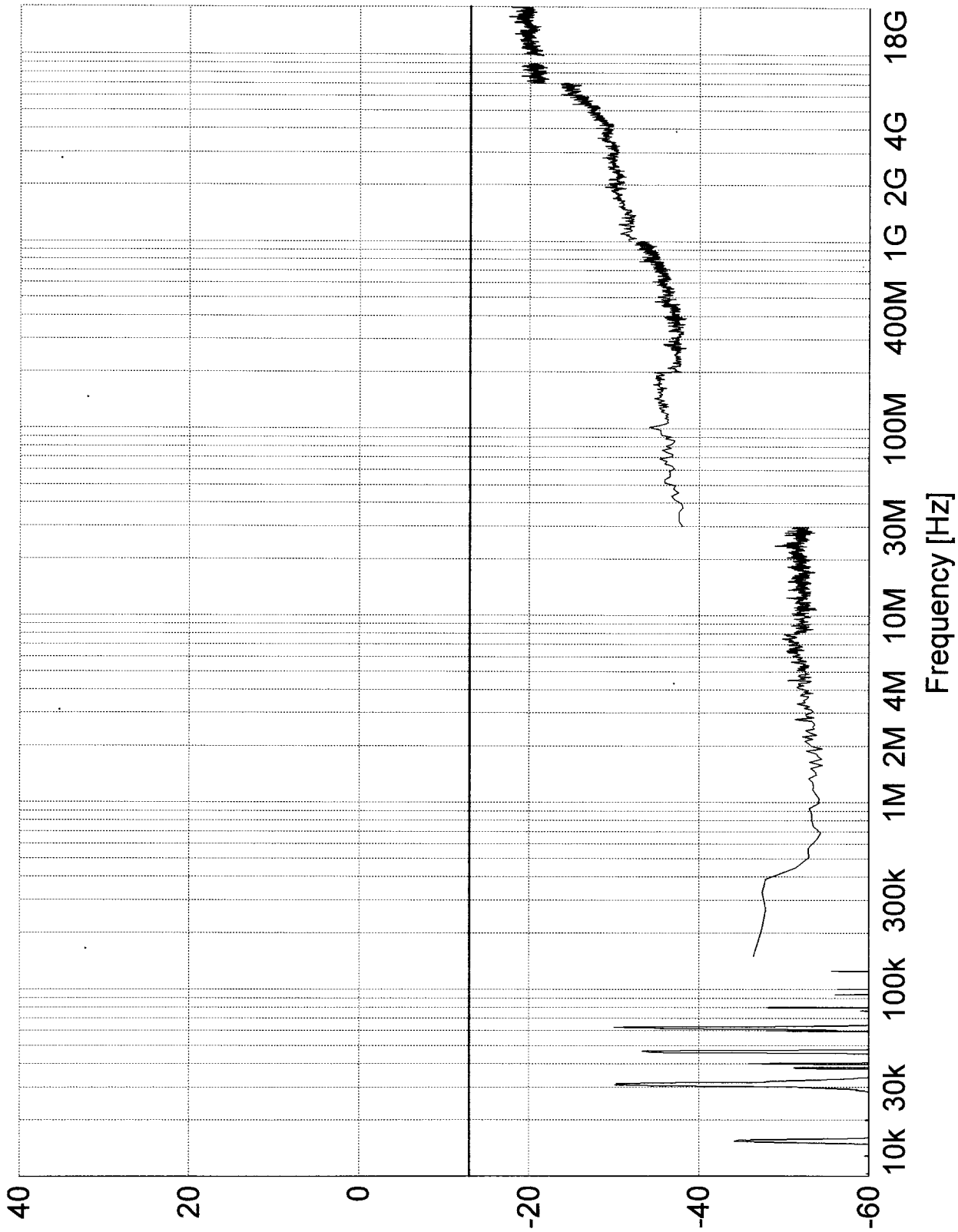
Customer:	Telephonics	Model:	RT-1601, FCC ID:02IMCB-RT-1601
Test:	Airborne Radar Transmitter	No.:	Temperature= +40C
Sample:	87.139(a)(3), Antenna conducted Spurious emissions, 10 kHz to 18 GHz	Notes:	Mode= SEARCH
Test Method:		Tech.:	TS/RPW
			Sheet 7 of 8



Report No. R-9105

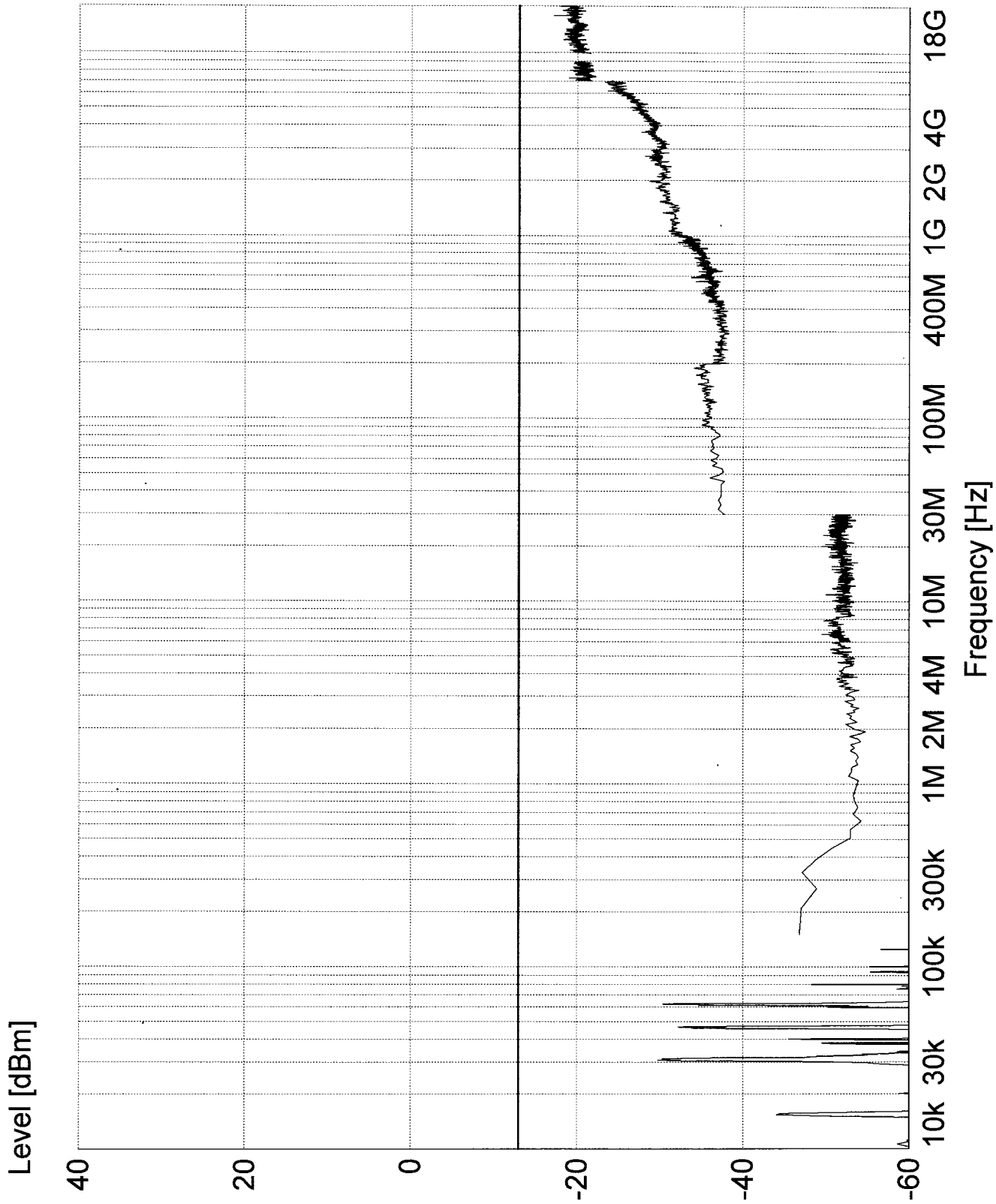
Customer:	Telephonics	Model:	RT-1601, FCC ID:02IMCB-RT-1601
Test:	Airborne Radar Transmitter	No.:	Temperature= +50C
Sample:	87.139(a)(3), Antenna conducted Spurious	Notes:	Mode= SEARCH
Test:	emissions, 10 kHz to 18 GHz	Tech.:	TS/RPM
Method:			Sheet 8 of 8

Level [dBm]



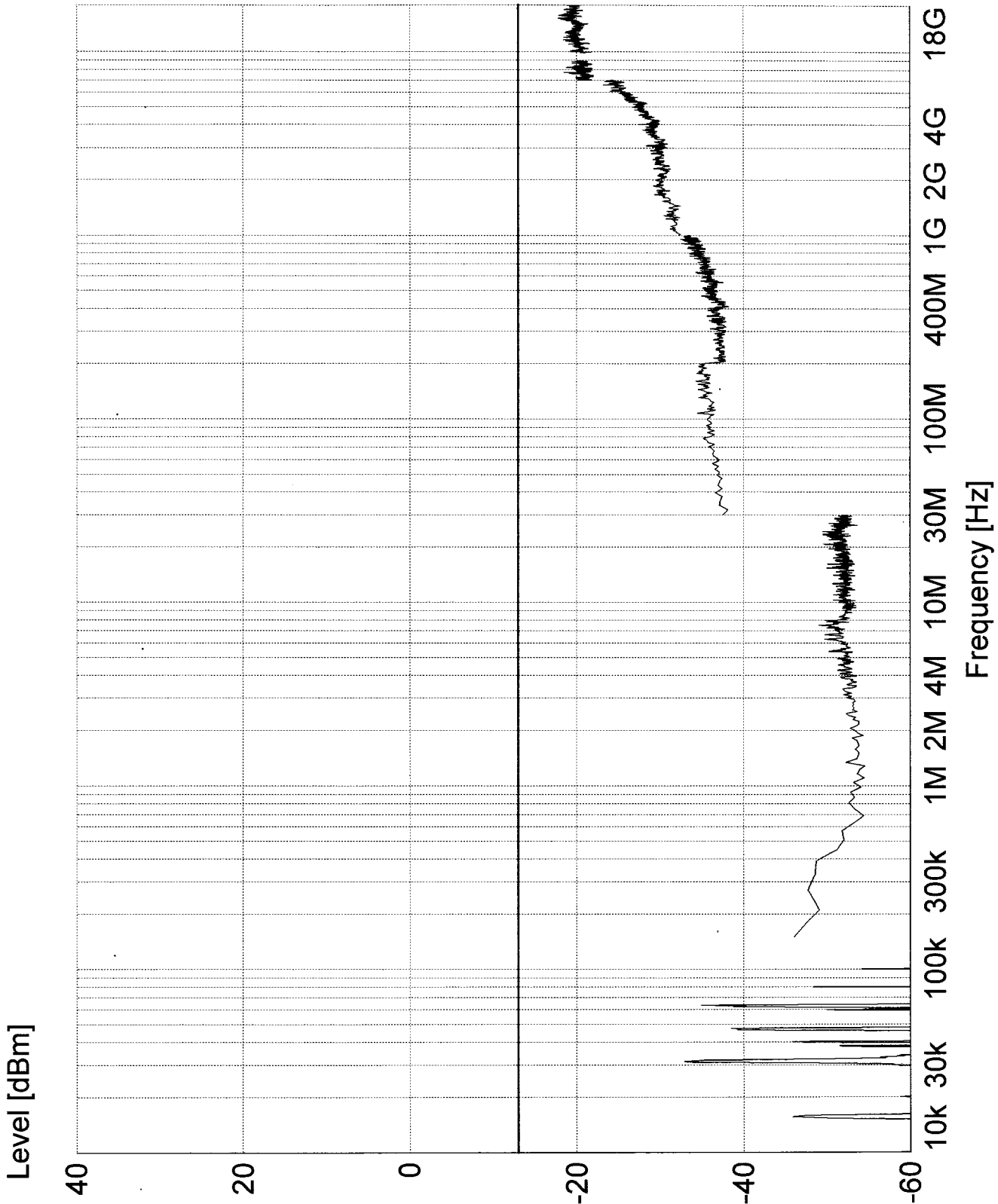
Report No. R-9105

Customer:	Telephonics	Model:	RT-1601, FCC ID:02IMCB-RT-1601
Test:	Airborne Radar Transmitter	No.:	Temperature= -20C
Sample:	87.139(a)(3), Antenna conducted Spurious	Notes:	Mode= Weather(WX)
Test:	emissions, 10 kHz to 18 GHz	Tech.:	T.S/RPW
Method:			Sheet 1 of 8



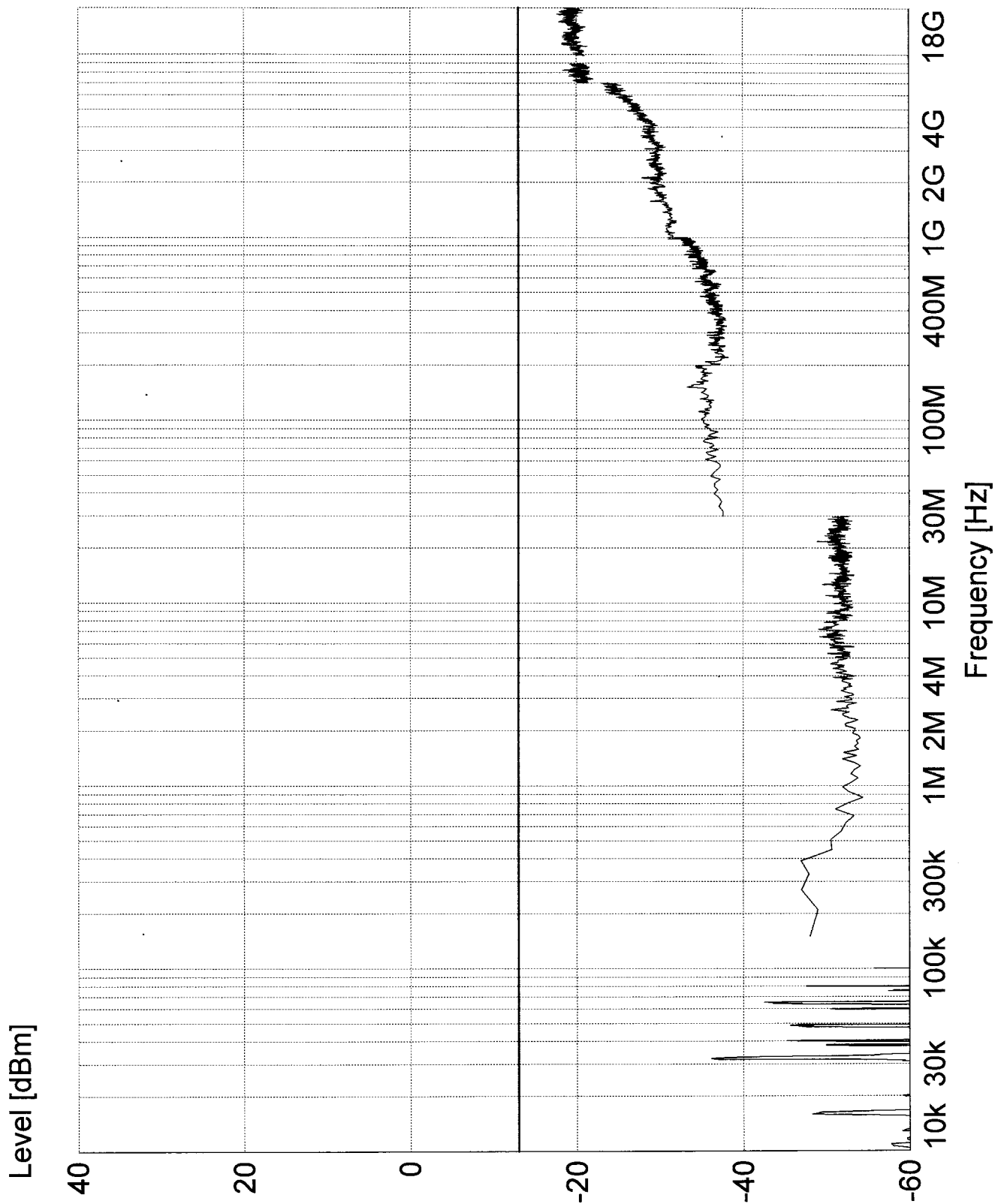
Report No. R-9105

Customer:	Telephonics	Model:	RT-1601, FCC ID:021MCB-RT-1601
Test:	Airborne Radar Transmitter	No.:	Temperature= -10C
Sample:	87.139(a)(3), Antenna conducted Spurious	Notes:	Mode= Weather(b)(K)
Test:	emissions, 10 kHz to 18 GHz	Tech.:	TJ/RPW
Method:			Sheet 2 of 8



Report No. R-9105

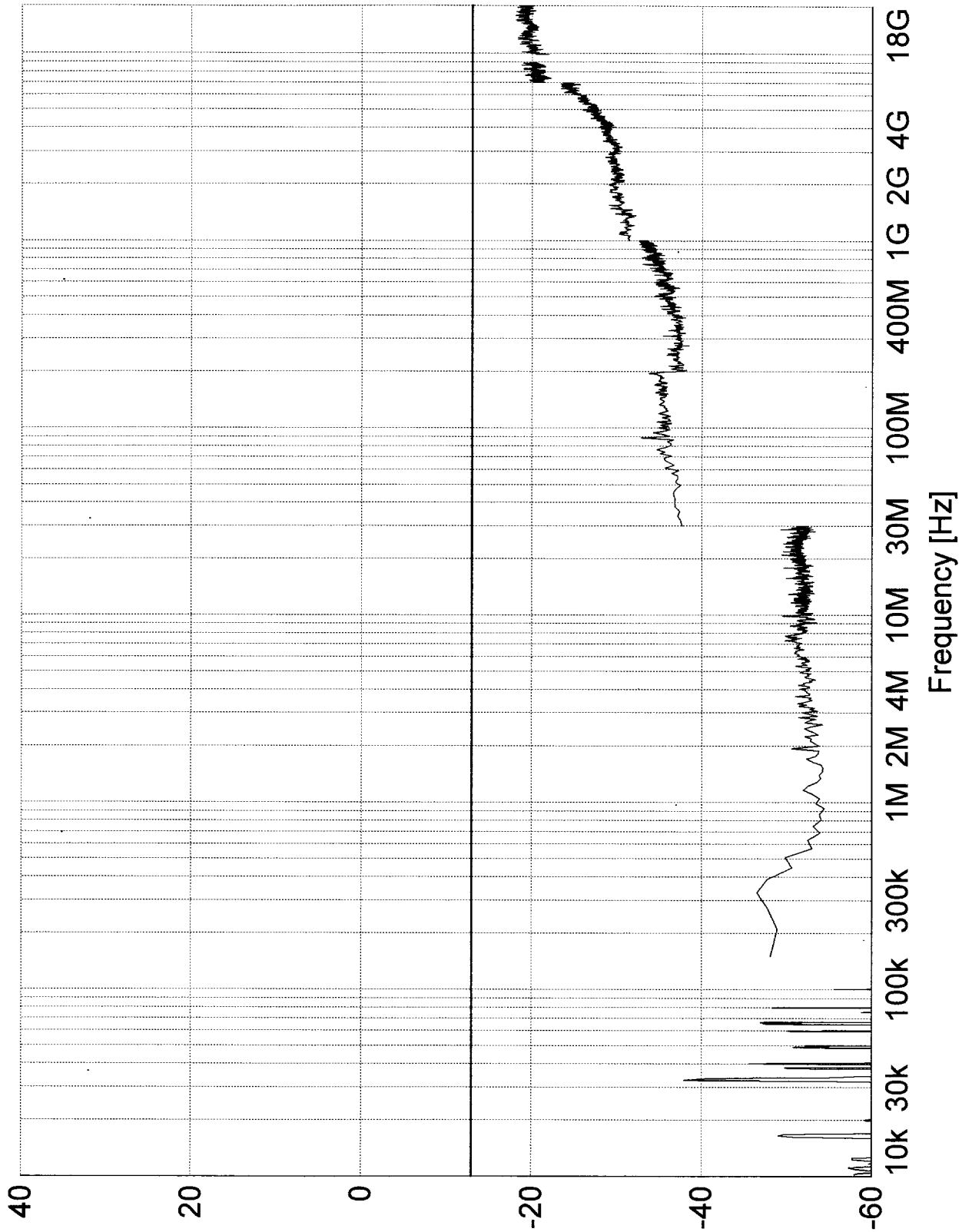
Customer:	Telephonics	Model:	RT-1601, FCC ID:02IMCB-RT-1601
Test:	Airborne Radar Transmitter	No.:	Temperature= 0C
Sample:	87.139(a)(3), Antenna conducted Spurious	Notes:	Mode= Weather(WX)
Test:	emissions, 10 kHz to 18 GHz	Tech:	TJ/arpw
Method:			Sheet 3 of 8



Report No. R-9105

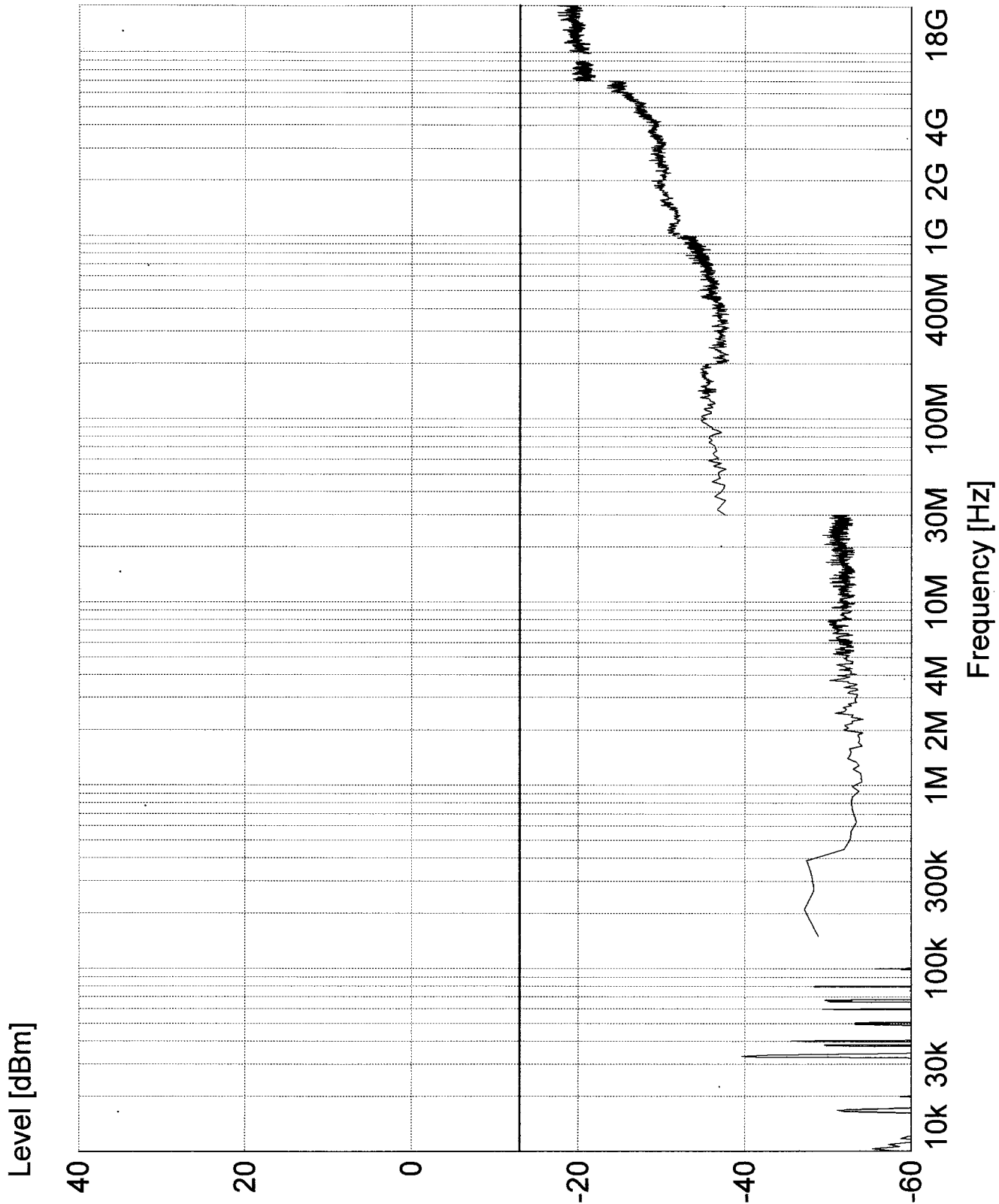
Customer:	Telephonics	Model:	RT-1601, FCC ID:02IMCB-RT-1601
Test:	Airborne Radar Transmitter	No.:	Temperature= +10C
Sampler:	87.139(a)(3), Antenna conducted Spurious	Notes:	Mode= Weather(WX)
Test:	emissions, 10 kHz to 18 GHz	Tech:	TS/RPW
Method:			Sheet 4 of 8

Level [dBm]



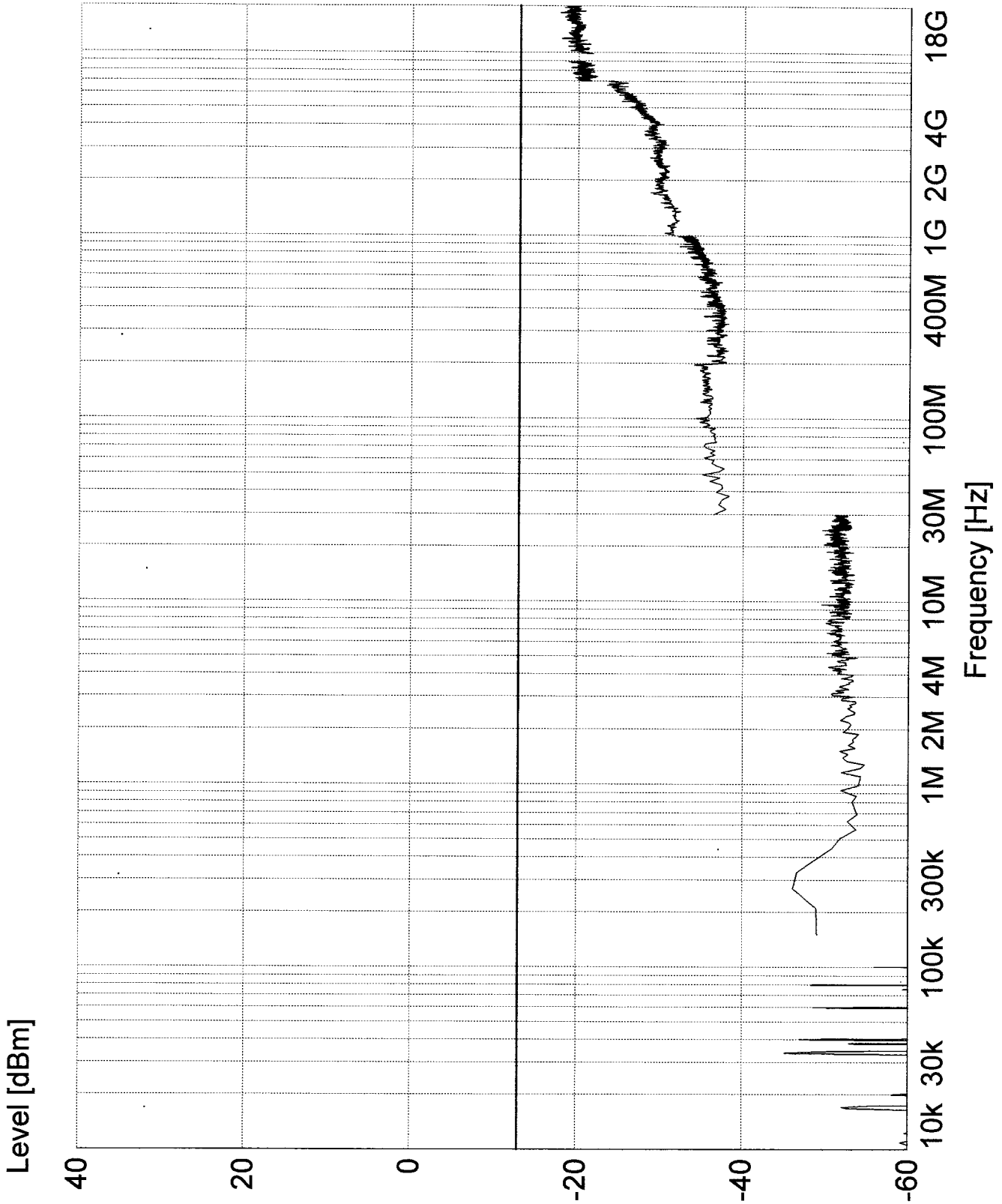
Report No. R-9105

Customer:	Telephonics	Model:	RT-1601, FCC ID:02IMCB-RT-1601
Test:	Airborne Radar Transmitter	No.:	Temperature= +20C
Sample:	87.139(a)(3), Antenna conducted Spurious	Notes:	Mode= Weather(UK)
Test:	emissions, 10 kHz to 18 GHz	Tech.:	TS/RPW
Method:			Sheet 5 of 8



Report No. R-9105

Customer:	Telephonics	Model:	RT-1601, FCC ID:02IMCB-RT-1601
Test:	Airborne Radar Transmitter	No.:	Temperature= +30C
Sample:	87.139(a)(2), Antenna conducted Spurious	Notes:	Mode= Weather(WX)
Test:	emissions, 10 kHz to 18 GHz	Tech.:	+S/APW
Method:			Sheet 6 of

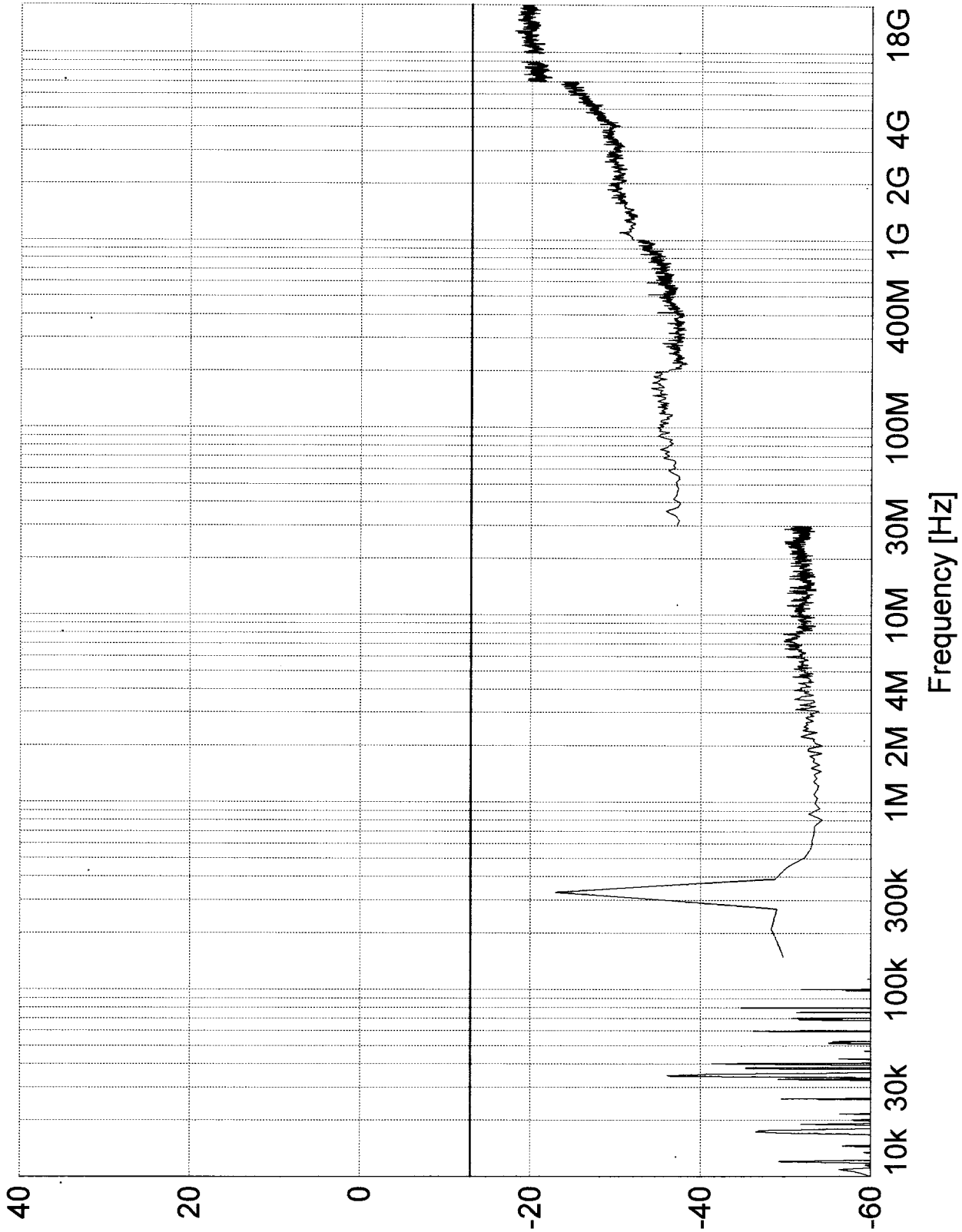


Report No. R-9105

Customer:	Telephonics	Model:	RT-1601, FCC ID:02IMCB-RT-1601
Test:	Airborne Radar Transmitter	Rev.:	Temperature= +40C
Sample:	87.139(a)(3), Antenna conducted Spurious emissions, 10 kHz to 18 GHz	Notes:	Mode= Weather(WX)
Test Method:		Tech.:	TS/CPW

Sheet 7 of 8

Level [dBm]



Report No. R-9105

Customer:	Telephonics	Model:	RT-1601, FCC ID:02IMCB-RT-1601
Test:	Airborne Radar Transmitter	No.:	Temperature= +50C
Sample:	87.139(a)(3), Antenna conducted Spurious emissions, 10 kHz to 18 GHz	Notes:	Mode= Weather(WX)
Test Method:		Tech:	TS/APW
		Sheet 8 of 8	