



815 Broad Hollow Rd., Farmingdale, New York 11735

(631) 755-7625 Fax: (631) 755-7046

This word document contains figures representing the Name Plate Dwg for the Receiver Transmitter RT-1501A. These figures are scanned images from drawing part number 381-1004-XXX. In addition there are two figures representing label placement..

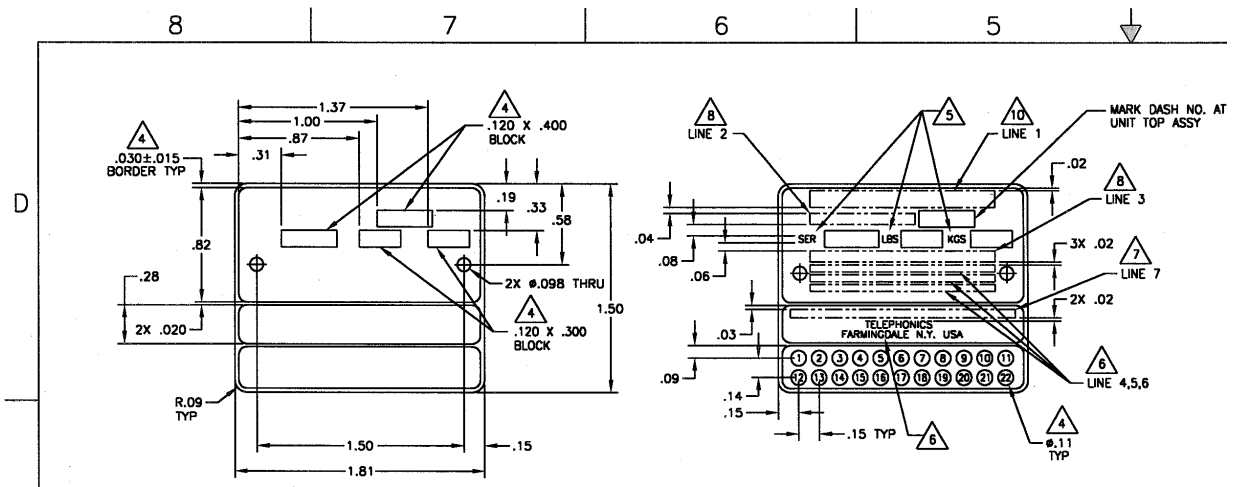


FIGURE 1

NOTES: UNLESS OTHERWISE SPECIFIED

1. INTERPRET DWG IAW MIL-STD-100.
2. MANUFACTURE IAW MIL-STD-454 REQT 9, 67.
3. MATERIAL: .003 THICK ALUMINUM WITH ADHESIVE ADHERED TO THE BACK SURFACE, CONFORMING TO MIL-M-43719.
4. ALL CHARACTERS, BORDER, BLOCKS, MOD. BLOCKS #.11 AND #.10 AREAS TO BE SATIN ALUMINUM ON A BLACK BACKGROUND. NOTE: CHARACTERS IN .11 DIA AND .10 DIA AREAS AND MOD. BLOCKS TO BE BLACK, ON A SATIN ALUMINUM BACKGROUND.
5. CHARACTERS .04 HIGH GOTHIC CHARACTERS.
6. CHARACTERS .05 HIGH GOTHIC CHARACTERS.
7. CHARACTERS .06 HIGH GOTHIC CHARACTERS.
8. CHARACTERS .08 HIGH GOTHIC CHARACTERS.
9. CHARACTERS .10 HIGH GOTHIC CHARACTERS.
10. CHARACTERS .12 HIGH GOTHIC CHARACTERS.
OR
MARKINGS SHALL BE ARIAL CAPITALS; NUMBERS AND CHARACTERS SHALL BE OF SIMILAR APPEARANCE.
11. UPPER PORTION OF PLATE INDICATED BY .22 DIMENSION AND LOWER PORTION OF PLATE INDICATED BY .32 DIMENSION TO HAVE SATIN FINISH NATURAL ALUMINUM CHARACTERS ON BLACK ANODIZED BACKGROUND.
12. MIDDLE PORTION OF PLATE TO HAVE BLACK-ANODIZED CHARACTERS ON SATIN FINISH ALUMINUM.
13. BLANK AREAS (INDICATED) TO HAVE BLACK ANODIZED BORDER .010 LINE WIDTH ON SATIN FINISH, NATURAL ALUMINUM.
14. PRIOR TO MANUFACTURE ARTWORK MASTERS TO BE APPROVED BY TELEPHONICS.
15. BAG AND TAG PER MIL-STD-130 WITH APPLICABLE PART NUMBER.
16. MARK MODEL NO. AT NEXT HIGHER ASSY.

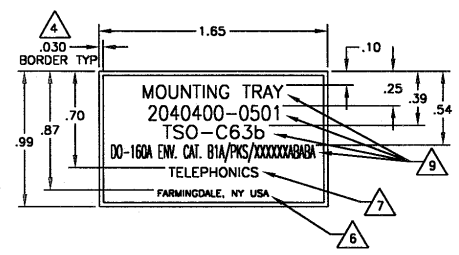


FIGURE 3

NEXT ASSY	USED ON	CONTR
		UNLES
		DIMS IN
		TOLERN
		TOLERN
		DECIMA
		MACHIN
		BREAK
		REMOVE

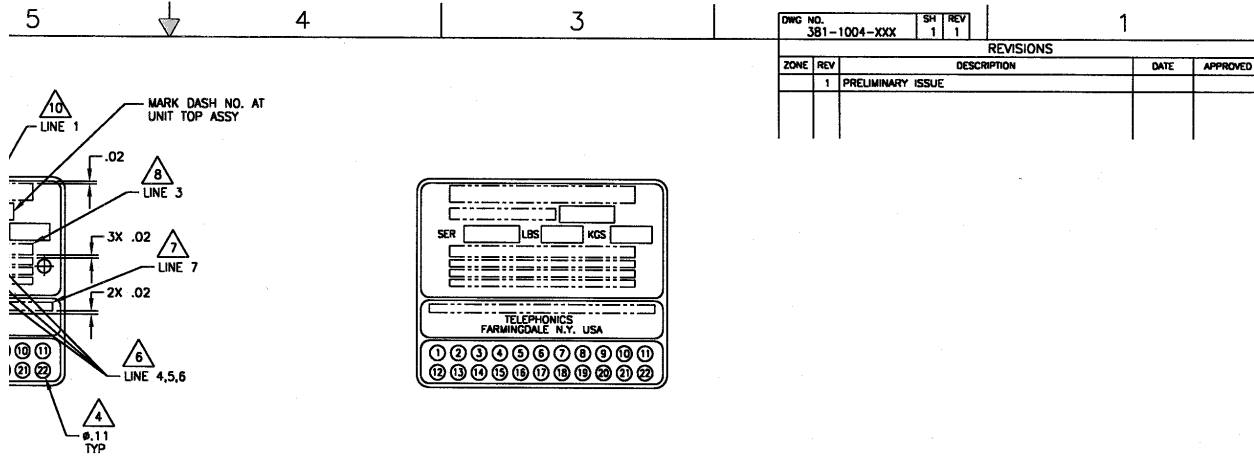


FIGURE 2

SAME AS FIG. 1 EXCEPT
OMIT .098 DIA. HOLES

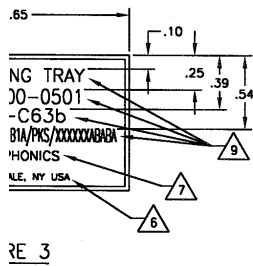


FIGURE 3

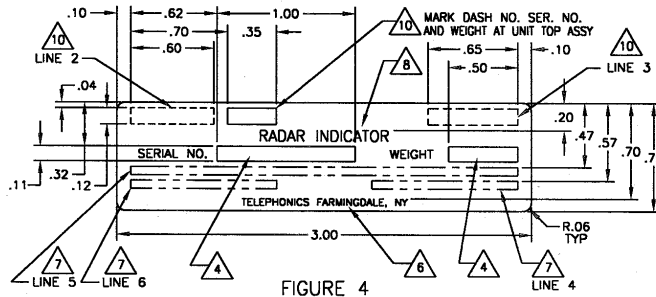



FIGURE 4

CAD MAINTAINED. CHANGES SHALL BE INCORPORATED BY THE DESIGN DEPT

NEXT ASSY	USED ON	CONTRACT NO.	PREPARED	R.BREASETT	00/05/12
		UNLESS OTHERWISE SPECIFIED: DIMES IN INCH (MM) PER ANSI Y14.5M-1994 TOLERANCES APPLY AFTER FINISH	CHECKED		
		DECIMALS: ±.01 (2 PLACE) ANGLES: ±1° ±.005 (3 PLACE)	MECH		
		MACHINE FINISH 125 ✓ OR BETTER BREAK SHARP EDGES REMOVE ALL BURRS.	ELEC		
			MFG ENG		
			QUALITY		
			ENG MGR		
			PROG MGR		
			RELIABILITY		
			TESTING		



Telephonics
815 Broadhollow Road, Farmingdale, New York 11735

NAMEPLATE

SIZE	FSCM NO.	DRAWING NO.	REV
D	64694	381-1004-XXX	1

5	4	3	2	1
			SCALE: 2/1	DO NOT SCALE DRAWING
				SHEET 1 OF 2

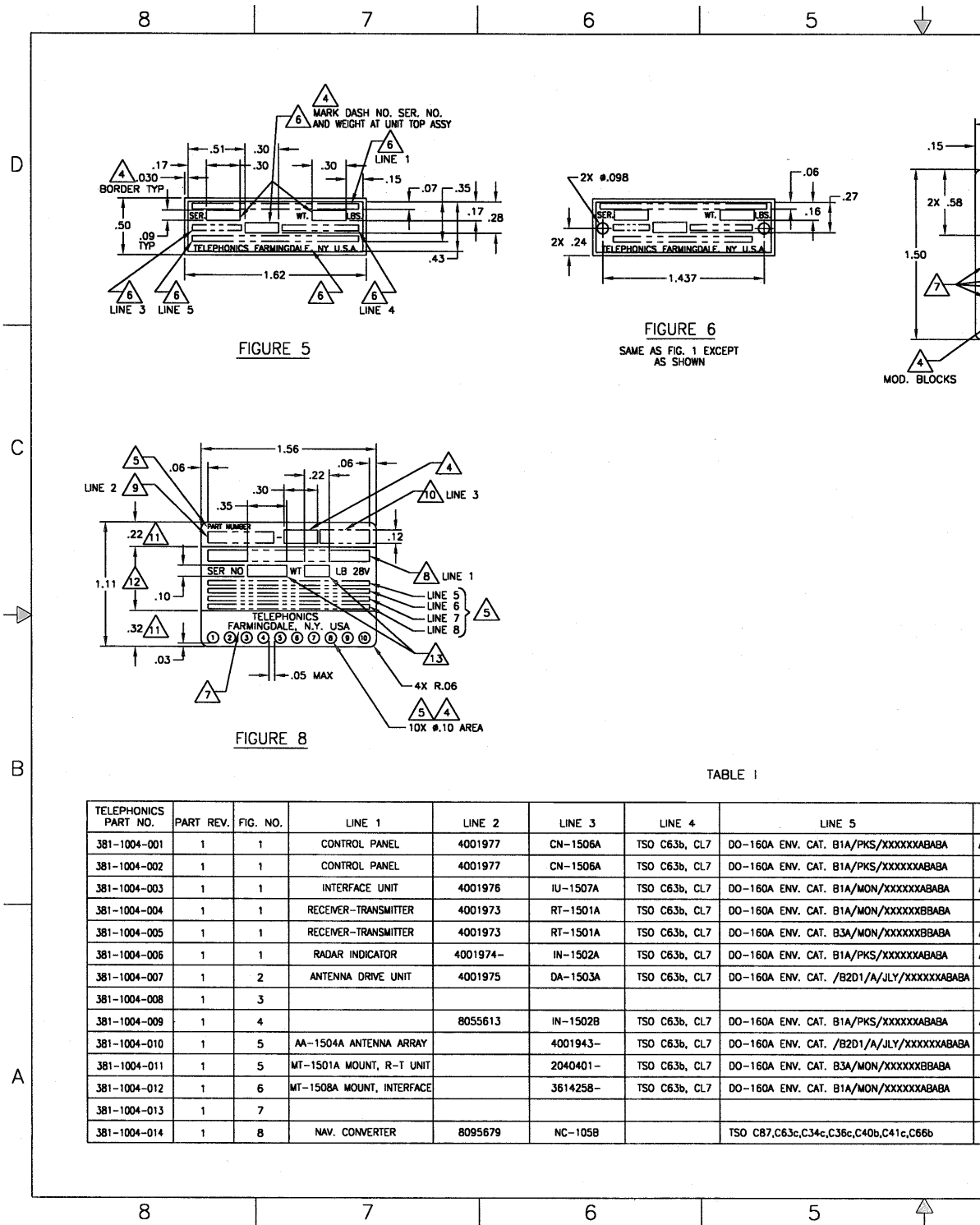


FIGURE 5

FIGURE 6
SAME AS FIG. 1 EXCEPT
AS SHOWN

FIGURE 8

TABLE I

TELEPHONICS PART NO.	PART REV.	FIG. NO.	LINE 1	LINE 2	LINE 3	LINE 4	LINE 5
381-1004-001	1	1	CONTROL PANEL	4001977	CN-1506A	TSO C63b, CL7	DO-160A ENV. CAT. B1A/PKS/XXXXXXABABA
381-1004-002	1	1	CONTROL PANEL	4001977	CN-1506A	TSO C63b, CL7	DO-160A ENV. CAT. B1A/PKS/XXXXXXABABA
381-1004-003	1	1	INTERFACE UNIT	4001976	IU-1507A	TSO C63b, CL7	DO-160A ENV. CAT. B1A/MON/XXXXXXABABA
381-1004-004	1	1	RECEIVER-TRANSMITTER	4001973	RT-1501A	TSO C63b, CL7	DO-160A ENV. CAT. B1A/MON/XXXXXXBABA
381-1004-005	1	1	RECEIVER-TRANSMITTER	4001973	RT-1501A	TSO C63b, CL7	DO-160A ENV. CAT. B3A/MON/XXXXXXBABA
381-1004-006	1	1	RADAR INDICATOR	4001974-	IN-1502A	TSO C63b, CL7	DO-160A ENV. CAT. B1A/PKS/XXXXXXABABA
381-1004-007	1	2	ANTENNA DRIVE UNIT	4001975	DA-1503A	TSO C63b, CL7	DO-160A ENV. CAT. /B2D1/A/JLY/XXXXXXABABA
381-1004-008	1	3					
381-1004-009	1	4		8055613	IN-1502B	TSO C63b, CL7	DO-160A ENV. CAT. B1A/PKS/XXXXXXABABA
381-1004-010	1	5	AA-1504A ANTENNA ARRAY		4001943-	TSO C63b, CL7	DO-160A ENV. CAT. /B2D1/A/JLY/XXXXXXABABA
381-1004-011	1	5	MT-1501A MOUNT, R-T UNIT		2040401-	TSO C63b, CL7	DO-160A ENV. CAT. B3A/MON/XXXXXXBABA
381-1004-012	1	6	MT-1508A MOUNT, INTERFACE		3614258-	TSO C63b, CL7	DO-160A ENV. CAT. B1A/MON/XXXXXXABABA
381-1004-013	1	7					
381-1004-014	1	8	NAV. CONVERTER	8095679	NC-105B		TSO C87,C63c,C34c,C36c,C40b,C41c,C66b

5	4	3	1
DWG NO. 381-1004-XXX SH 2 REV 1			1
REVISIONS			
ZONE	REV	DESCRIPTION	DATE APPROVED
		SEE SHEET 1	

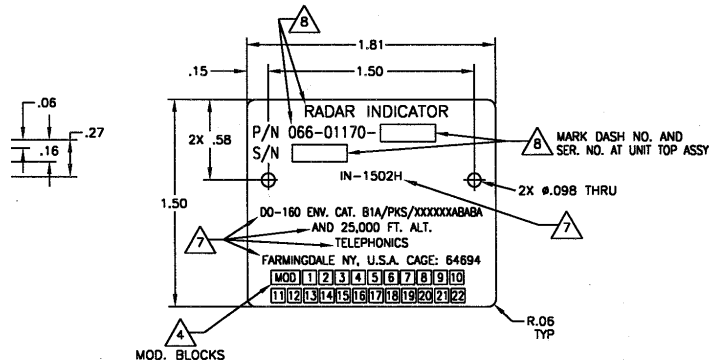


FIGURE 7

LINE 5	LINE 6	LINE 7	LINE 8	MODEL NO. (REF)
ENV. CAT. B1A/PKS/XXXXXXABABA	AND 25,000 FT. ALT.			CN-1506A
ENV. CAT. B1A/PKS/XXXXXXABABA				CN-1506A
ENV. CAT. B1A/MON/XXXXXXABABA	AND 25,000 FT. ALT.			IU-1507A
ENV. CAT. B1A/MON/XXXXXXBBABA				RT-1501A
ENV. CAT. B3A/MON/XXXXXXBBABA	AND 25,000 FT. ALT.			RT-1501A
ENV. CAT. B1A/PKS/XXXXXXABABA	AND 25,000 FT. ALT.			IN-1502A
ENV. CAT. /B2D1/A/JLY/XXXXXXABABA				DA-1503A
				IN-1502A
ENV. CAT. B1A/PKS/XXXXXXABABA	AND 25,000 FT. ALT.			IN-1502B
ENV. CAT. /B2D1/A/JLY/XXXXXXABABA				AA-1504A
ENV. CAT. B3A/MON/XXXXXXBBABA				MT-1501A
ENV. CAT. B1A/MON/XXXXXXABABA				MT-1508A
				IN-1502H
.63c,C34c,C36c,C40b,C41c,C66b	DO-160A	ENV. CAT. F2A/MON/XXXXXXABABA		NC-105B

SIZE FSCM NO	DRAWING NO.	RT
D 64694	381-1004-XXX	
SCALE: 2/1	DO NOT SCALE DRAWING	SHEET 2 OF 2

5	4	3	2	1
---	---	---	---	---



