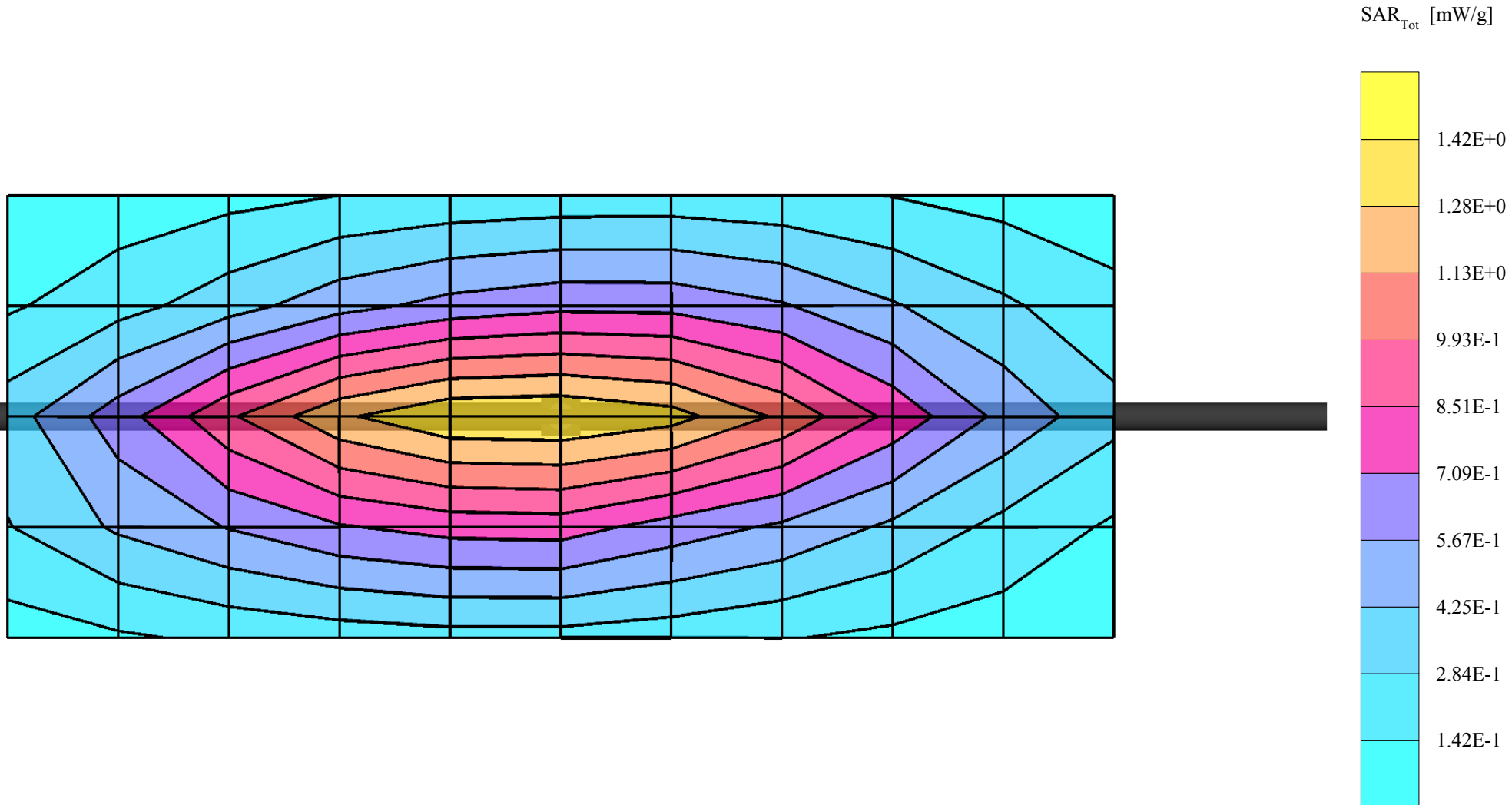


450MHz Dipole Validation

SAM(450M) Phantom; Flat Section; Probe: ET3DV6 - SN1703; ConvF(7.90,7.90,7.90);
Med. parameter 450 MHz Muscle: $\sigma = 0.96$ mho/m $\epsilon_r = 57.5$ $\rho = 1.00$ g/cm³; Crest factor: 1.0;
SAR (1g): 1.24 mW/g, SAR (10g): 0.807 mW/g; Powerdrift: 0.01 dB;

Dipole validation:
for $f < 1$ GHz, distance to the liquid $d = 15$ mm
for $f > 1$ GHz, distance to the liquid $d = 10$ mm



450MHz Dipole Validation

SAM(450M) Phantom; Flat Section; Probe: ET3DV6 - SN1703; ConvF(7.70,7.70,7.70);
Med. parameter 450 MHz Brain: $\sigma = 0.86$ mho/m $\epsilon_r = 41.9$ $\rho = 1.00$ g/cm³; Crest factor: 1.0;
SAR (1g): 1.24 mW/g, SAR (10g): 0.817 mW/g; Powerdrift: -0.03 dB;

Dipole validation:
for $f < 1$ GHz, distance to the liquid $d = 15$ mm
for $f > 1$ GHz, distance to the liquid $d = 10$ mm

