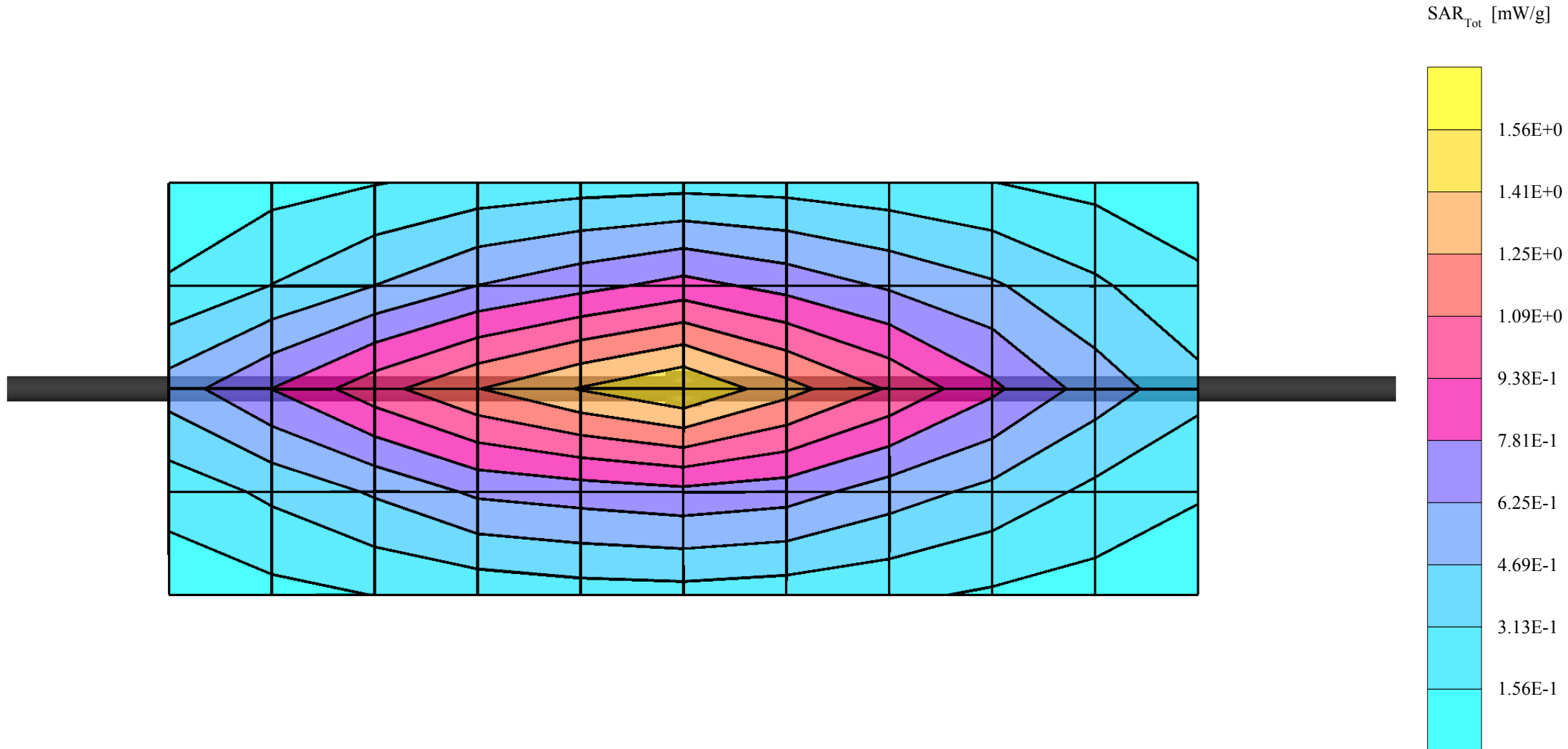


# 450MHz Dipole Validation

SAM(450M) Phantom; Flat Section; Probe: ET3DV6 - SN1703; ConvF(7.70,7.70,7.70);  
Med. parameter 450 MHz Brain:  $\sigma = 0.86$  mho/m  $\epsilon_r = 41.9$   $\rho = 1.00$  g/cm<sup>3</sup>; Crest factor: 1.0;  
SAR (1g): 1.24 mW/g, SAR (10g): 0.817 mW/g; Powerdrift: -0.03 dB;

Dipole validation:  
for  $f < 1$  GHz, distance to the liquid  $d = 15$  mm  
for  $f > 1$  GHz, distance to the liquid  $d = 10$  mm



# 450MHz Dipole Validation

SAM(450M) Phantom; Flat Section; Probe: ET3DV6 - SN1703; ConvF(7.90,7.90,7.90);  
Med. parameter 450 MHz Muscle:  $\sigma = 0.96$  mho/m  $\epsilon_r = 57.5$   $\rho = 1.00$  g/cm<sup>3</sup>; Crest factor: 1.0;  
SAR (1g): 1.24 mW/g, SAR (10g): 0.807 mW/g; Powerdrift: 0.01 dB;

Dipole validation:  
for  $f < 1$  GHz, distance to the liquid  $d = 15$  mm  
for  $f > 1$  GHz, distance to the liquid  $d = 10$  mm

