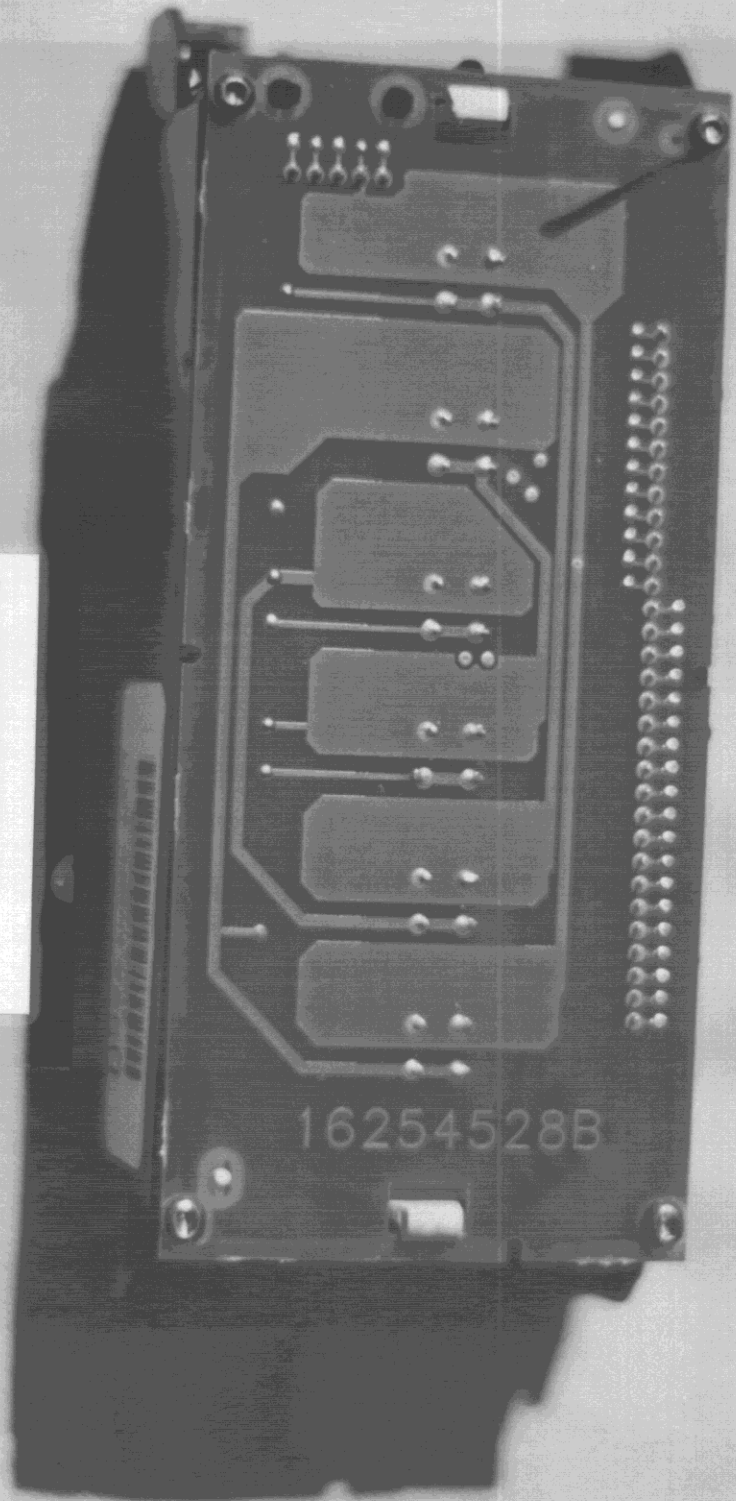
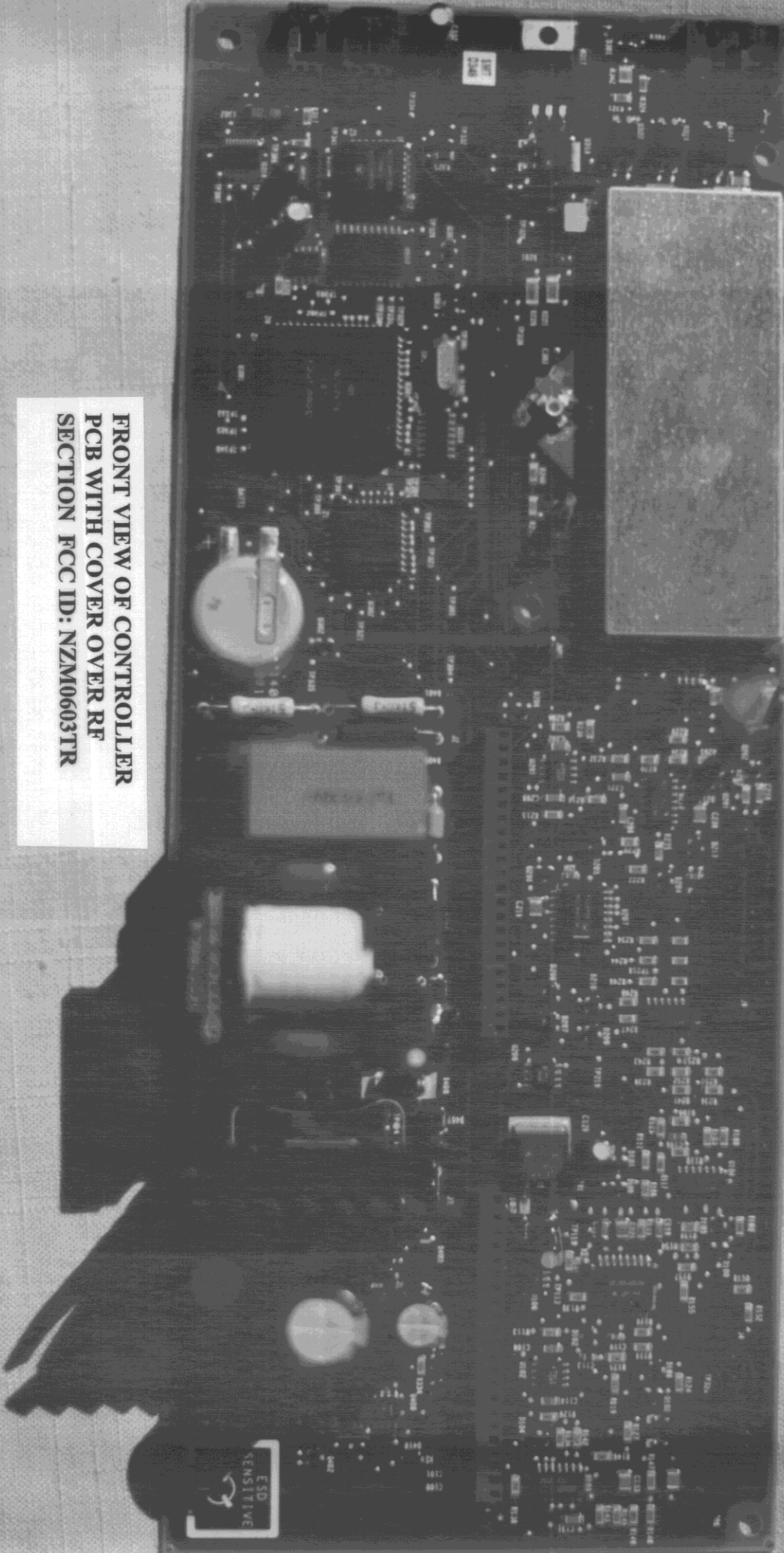


BACK VIEW OF LCD
FCC ID: NZM0603TR

16254528B

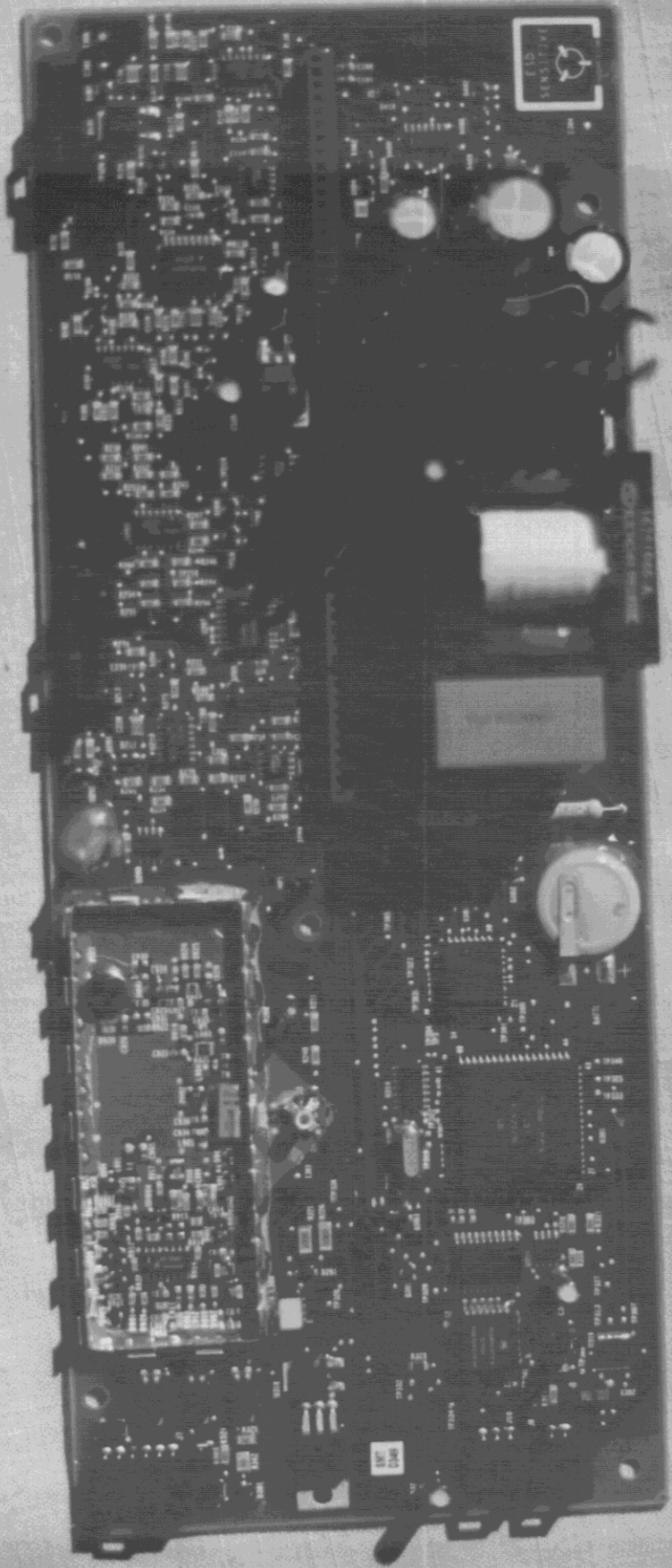


**FRONT VIEW OF CONTROLLER
PCB WITH COVER OVER RF
SECTION FCC ID: NZM0603TR**

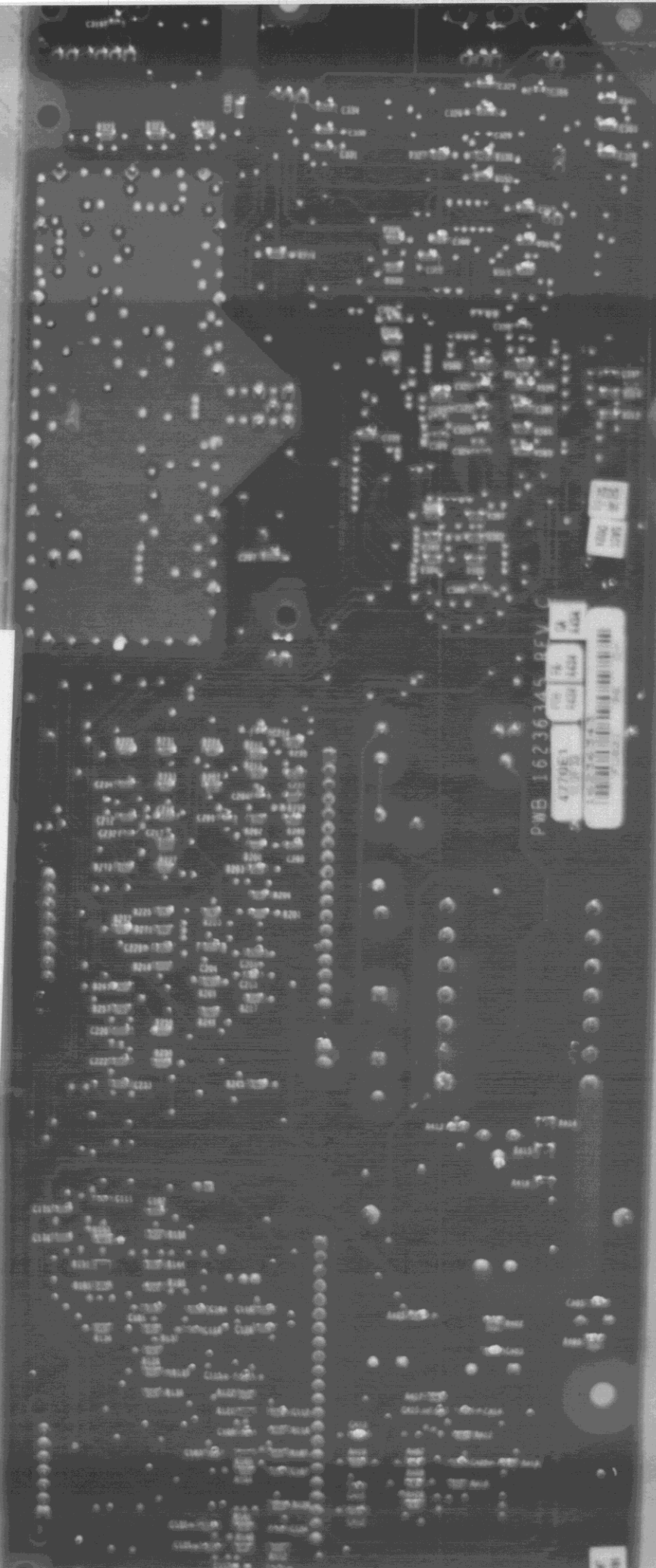


ESD
SENSITIVE

**FRONT VIEW OF CONTROLLER
PCB WITHOUT COVER OVER
RF SECTION FCC ID: NZM0603TR**

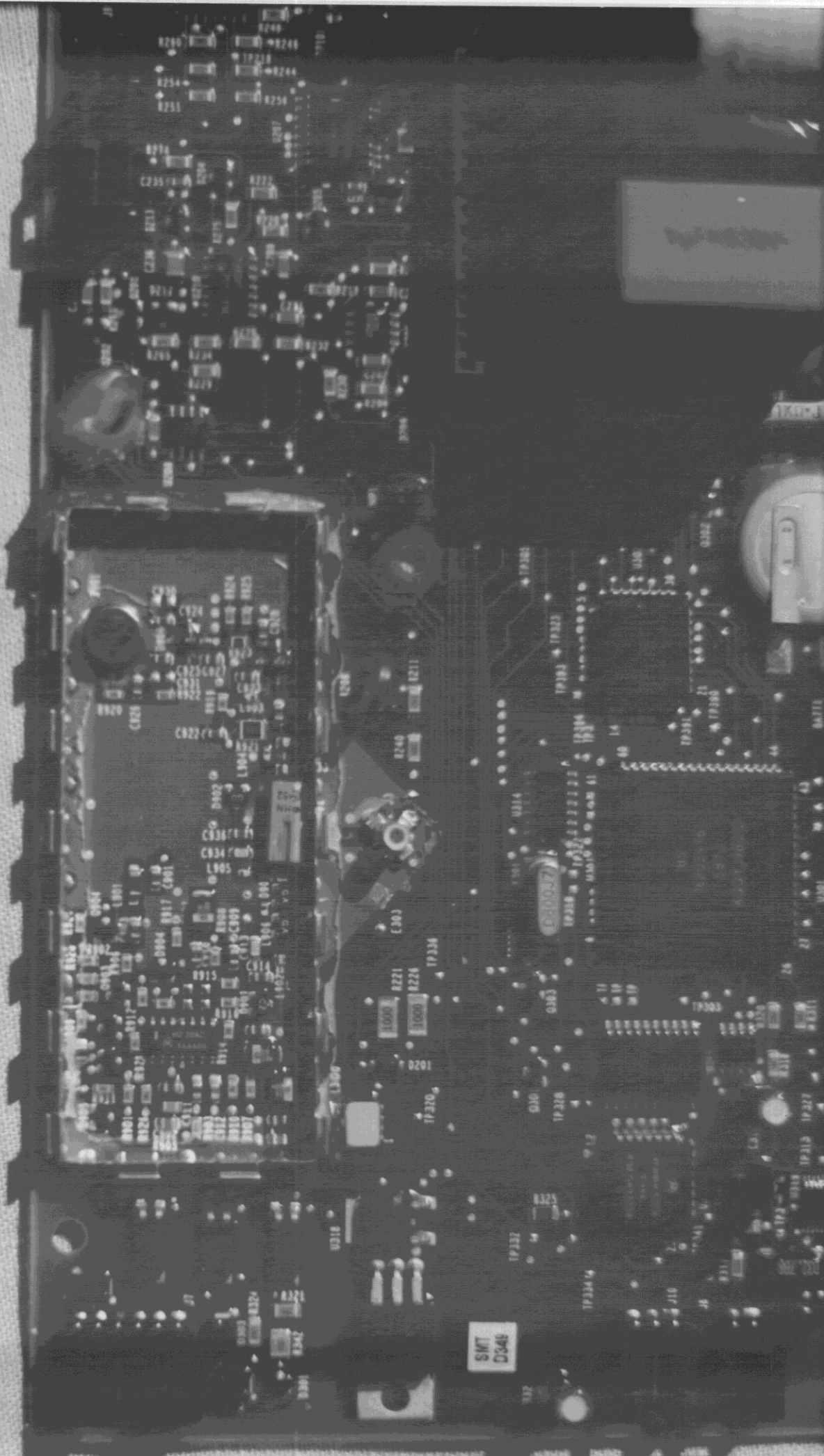


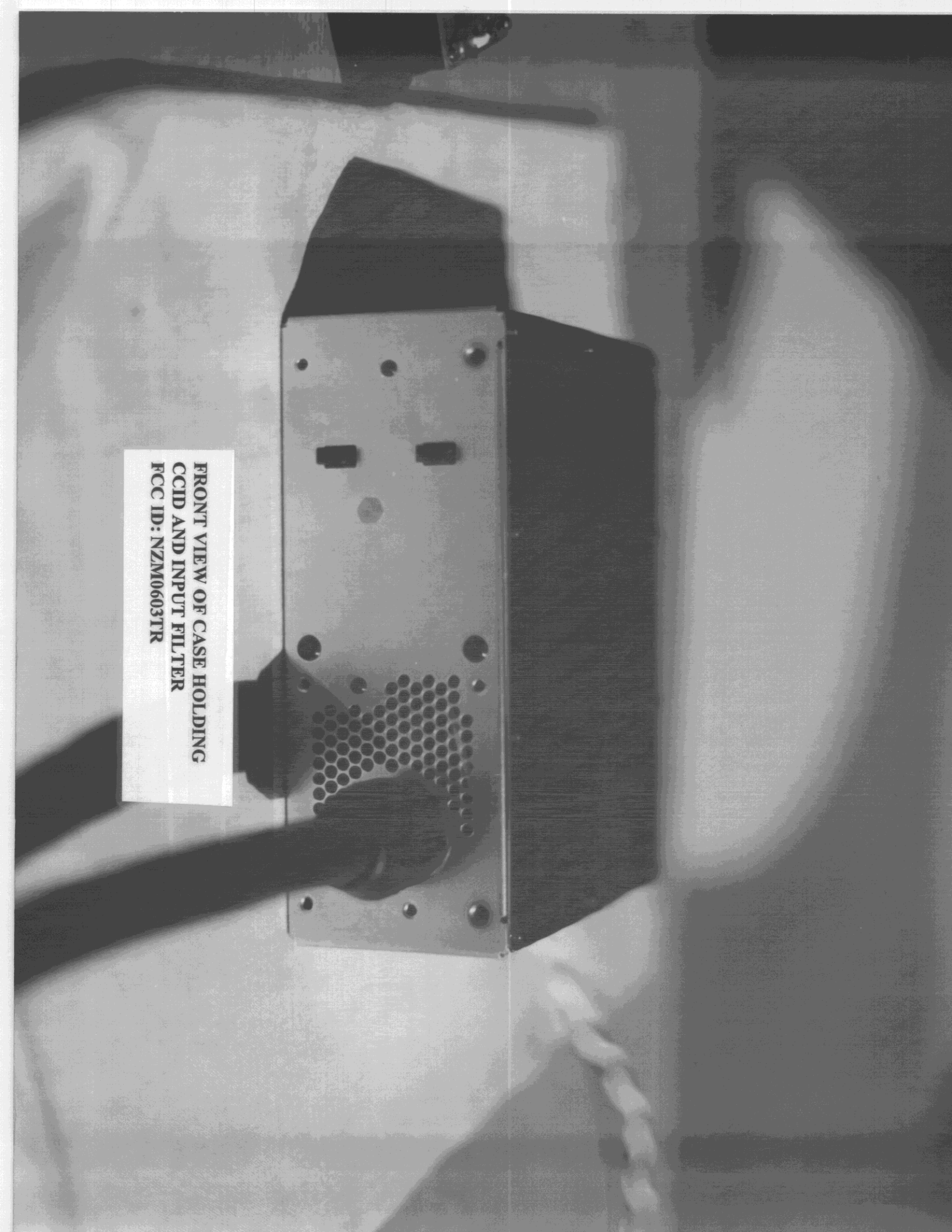
REAR VIEW OF CONTROLLER
PCB FCC ID: NZM0603TR



A3D 54E6291 BMD
04
08

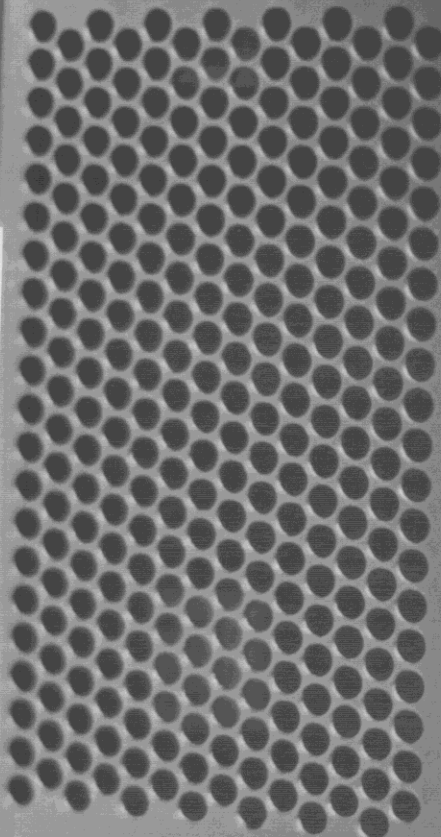
CLOSE-UP OF RF SECTION
FCC ID: NZM0603TR



A black and white photograph showing the front view of a metal case. The case is rectangular and has several features: two small rectangular slots near the top, a circular hole in the center, and a large circular perforated area at the bottom. The case is mounted on a light-colored surface. A white label is attached to the left side of the case.

**FRONT VIEW OF CASE HOLDING
CCID AND INPUT FILTER
FCC ID: NZM0603TR**

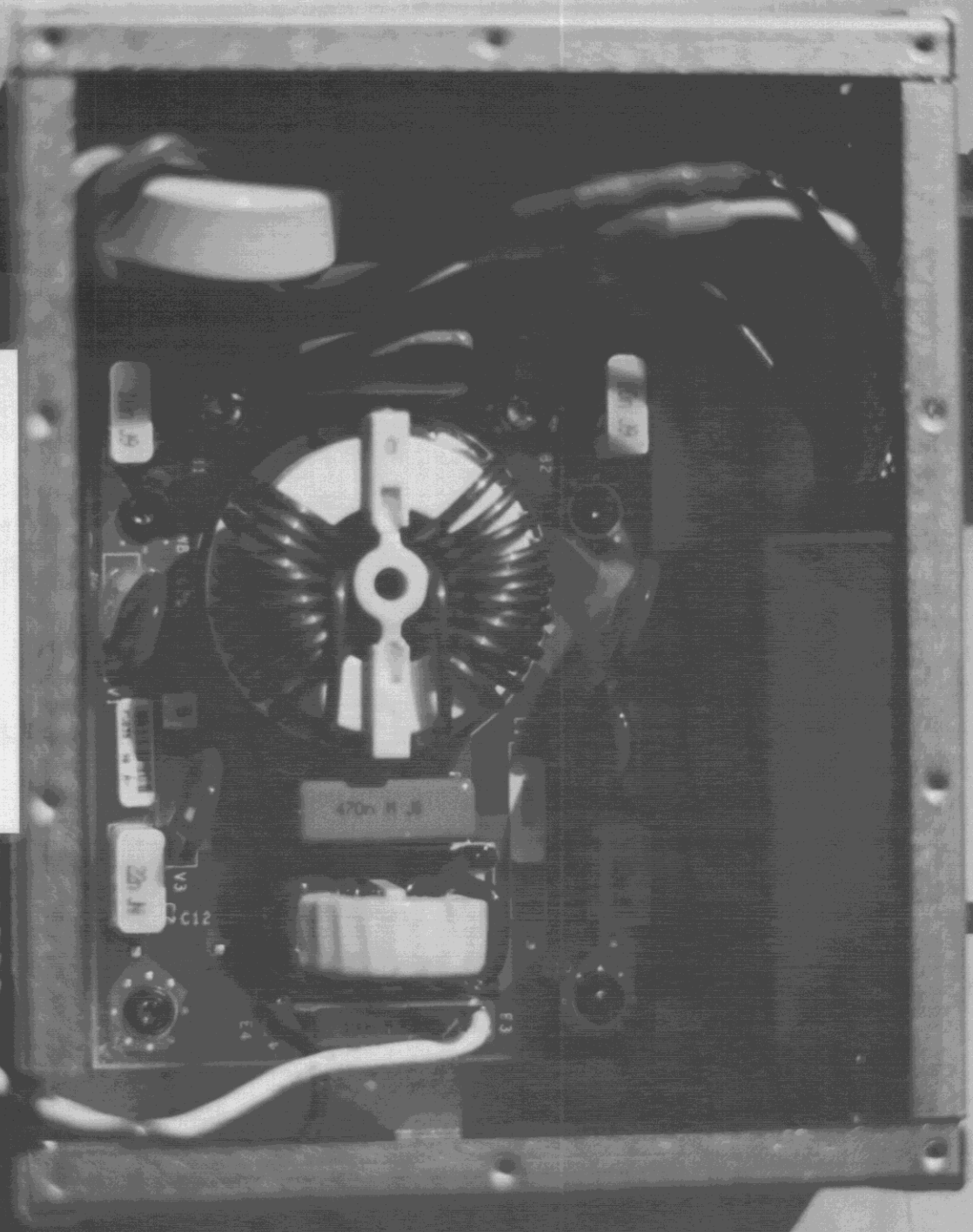
10222222
SM0356P9826002B -



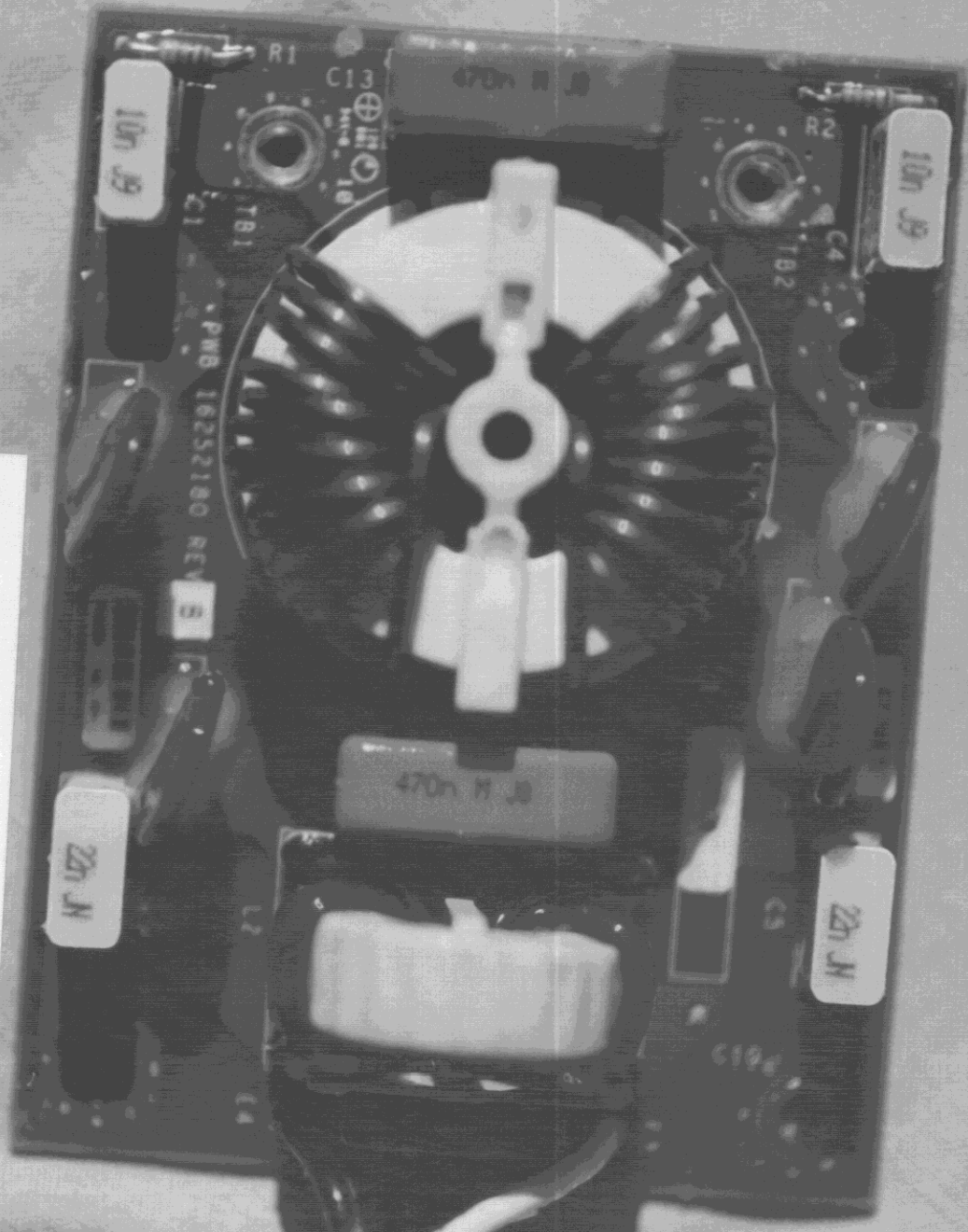
REAR VIEW OF CASE HOLDING
CCID AND INPUT FILTER
FCC ID: NZM0603TR

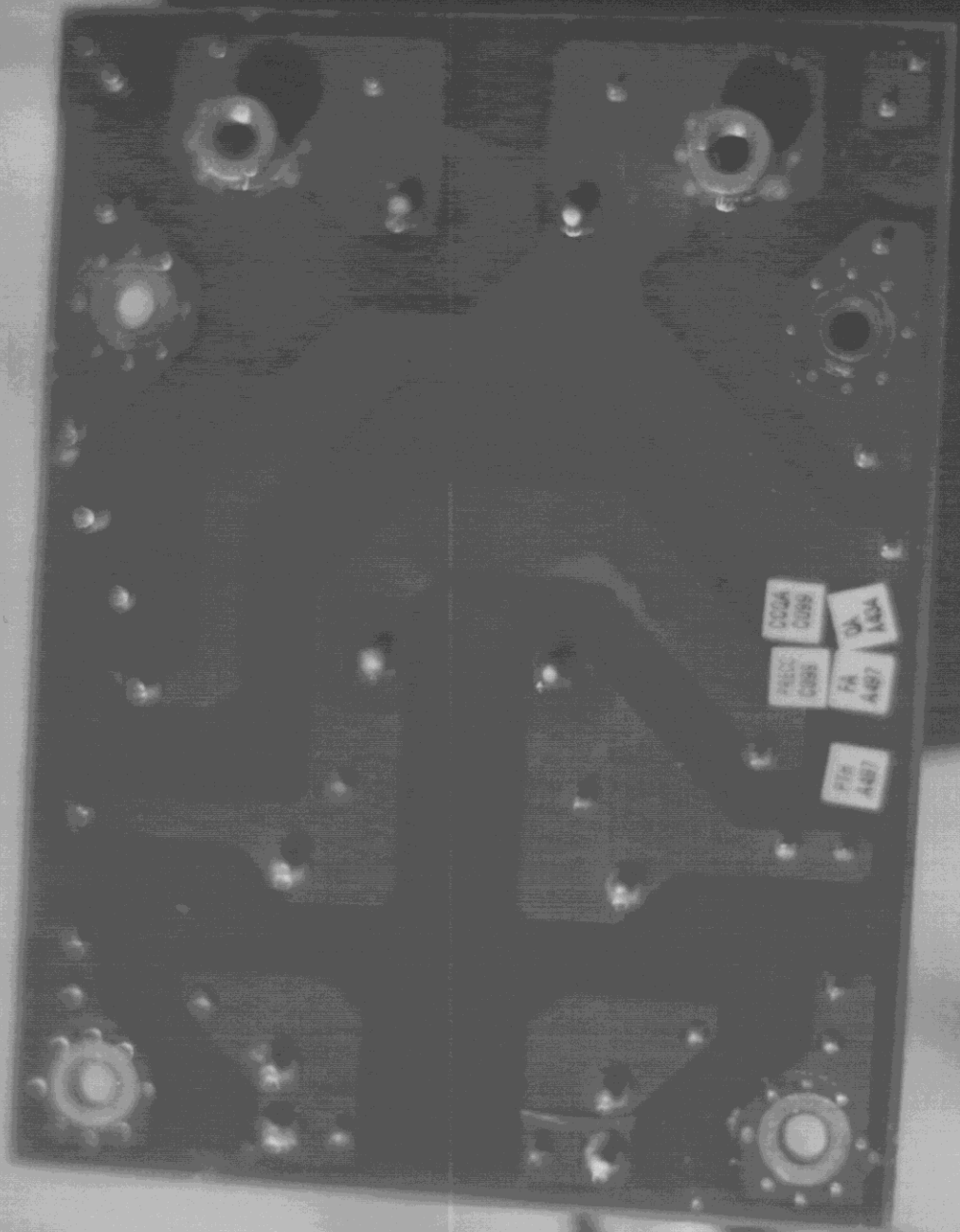


VIEW OF INPUT FILTER INSIDE
CASE FCC ID: NZM0603TR

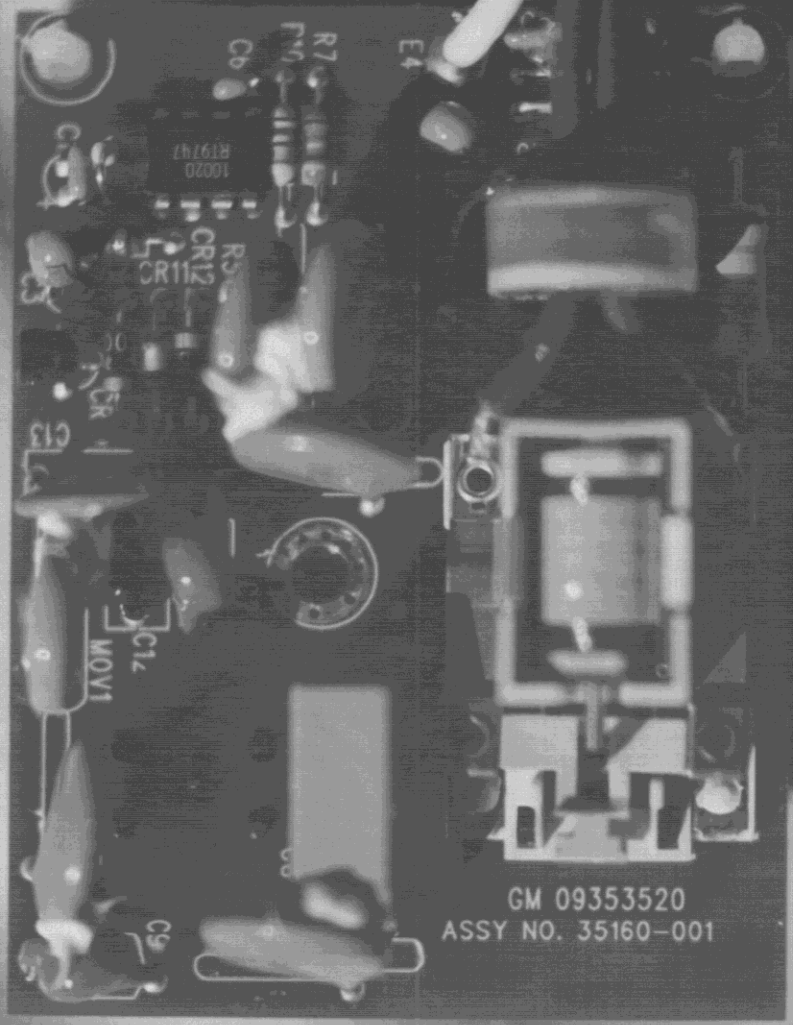


FRONT VIEW OF INPUT FILTER
FCC ID: NZM0603TR





REAR VIEW OF INPUT FILTER
FCC ID: NZM0603TR

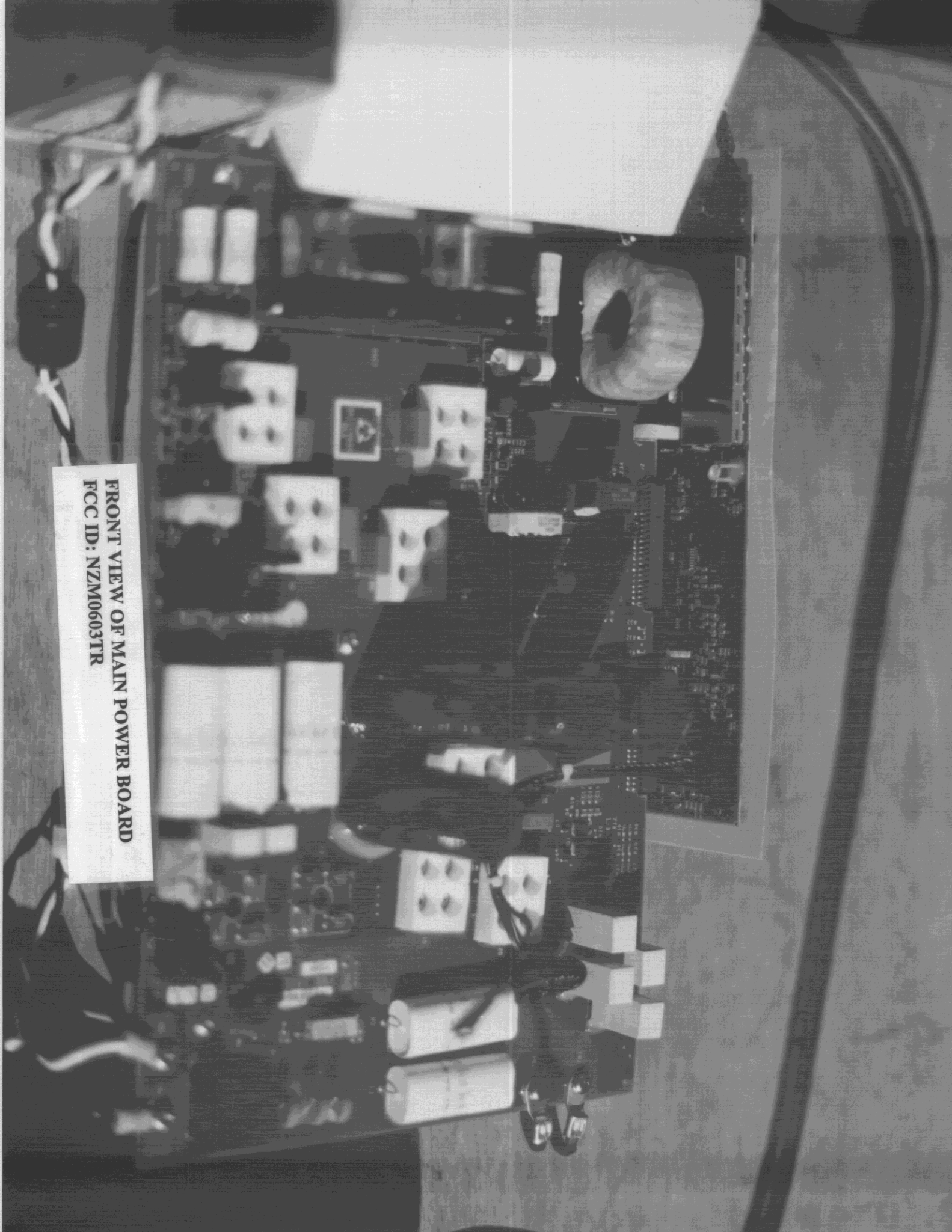


GM 09353520
ASSY NO. 35160-001

FRONT VIEW OF CCID BOARD
FCC ID: NZM0603TR

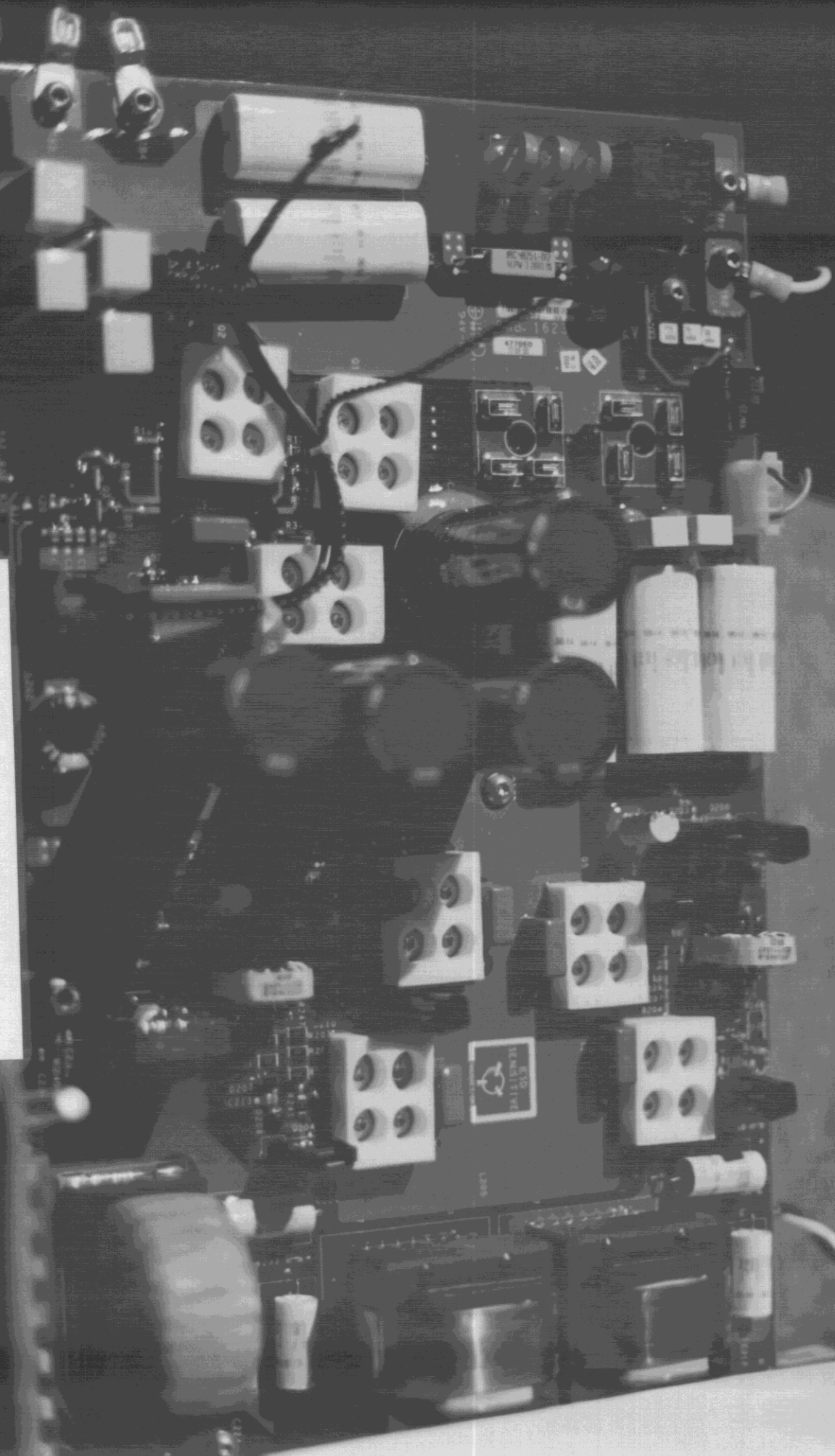
A black and white photograph showing the rear view of a CCD board. The board is a dark, rectangular printed circuit board (PCB) with numerous small, light-colored components, likely solder joints or small surface components, arranged in a grid-like pattern. Two white, cylindrical components are visible on the board. The board is mounted on a dark, textured surface, possibly a metal chassis. A white label is attached to the board, containing the text "REAR VIEW OF CCD BOARD" and "FCC ID: NZM0603TR".

REAR VIEW OF CCD BOARD
FCC ID: NZM0603TR

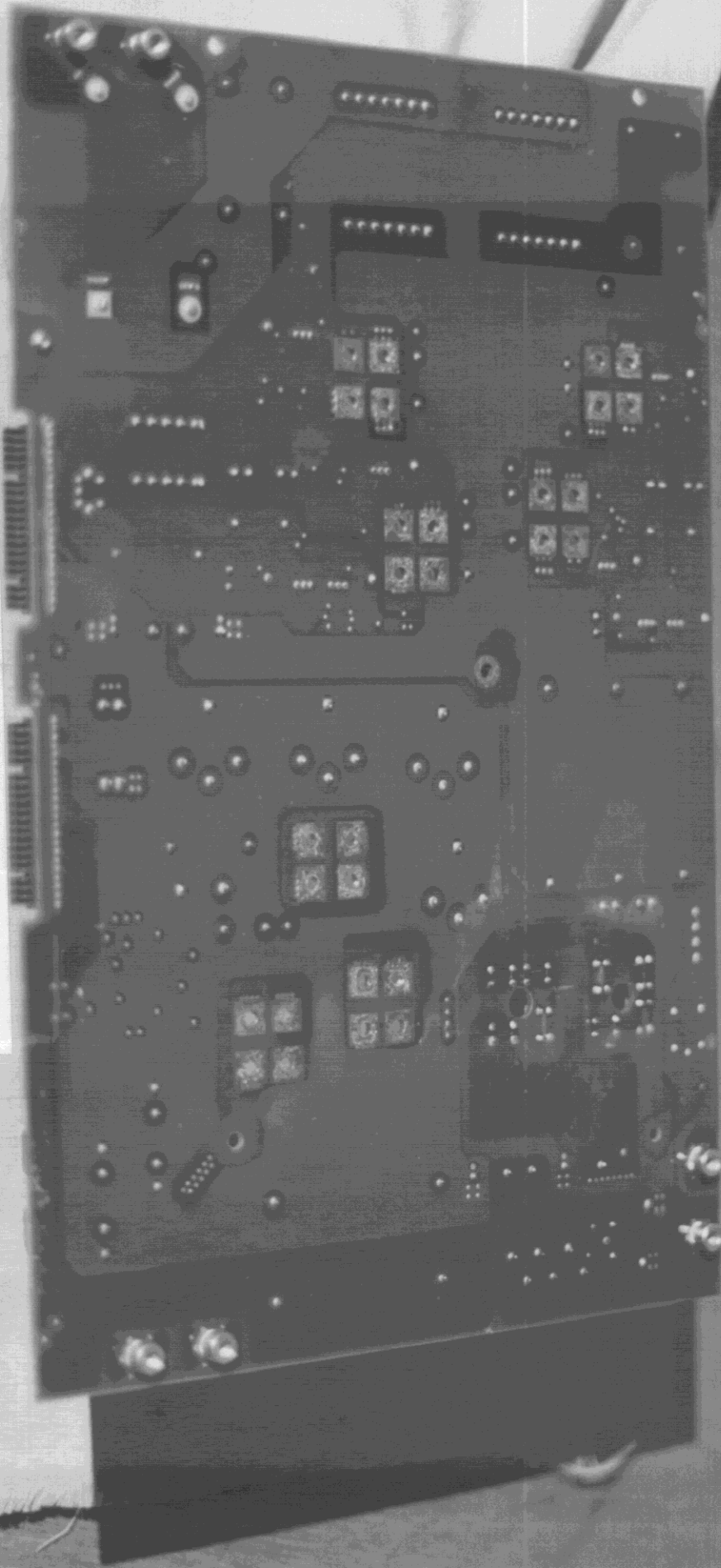


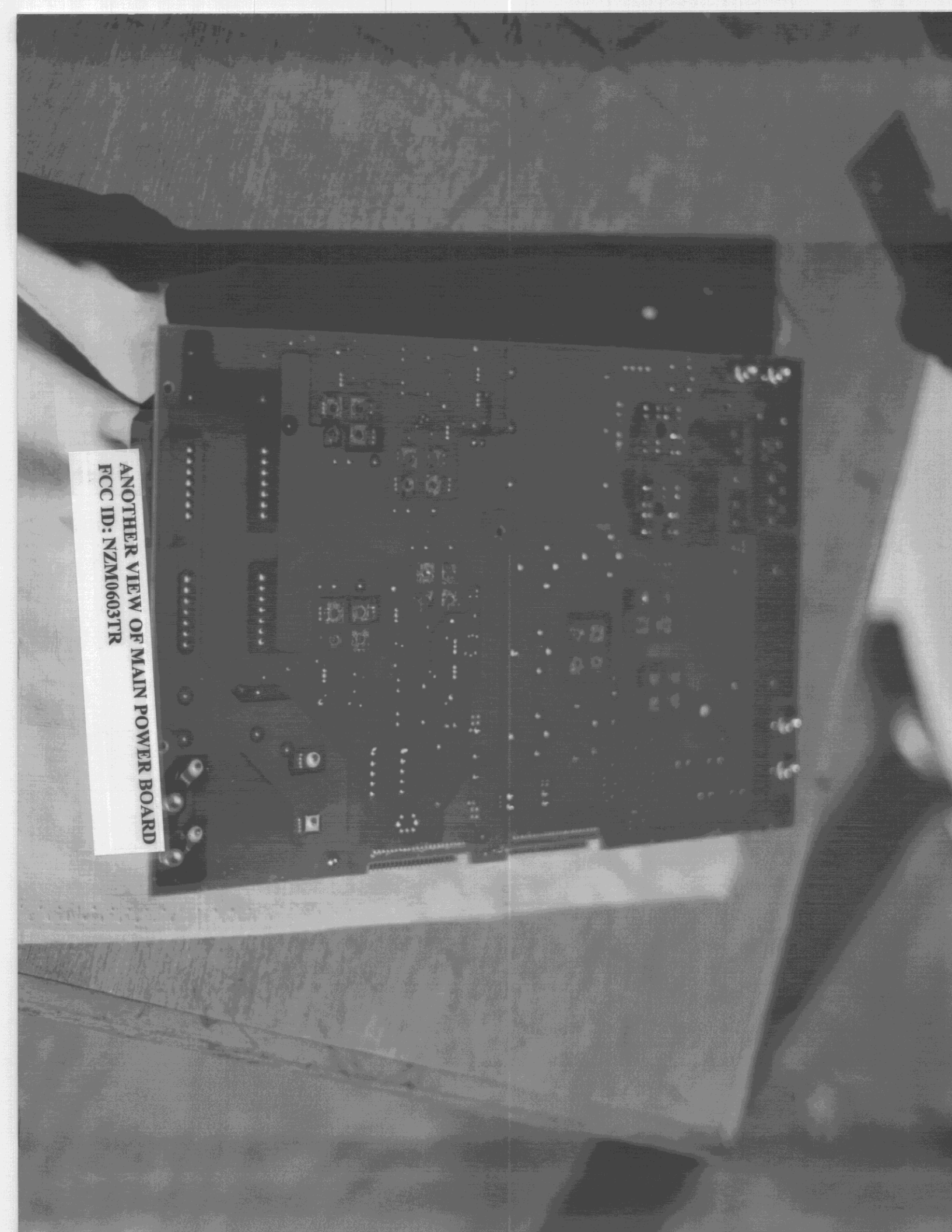
FRONT VIEW OF MAIN POWER BOARD
FCC ID: NZM0603TR

CLOSE OF FRONT VIEW OF MAIN POWER
BOARD FCC ID: NZM0603TR



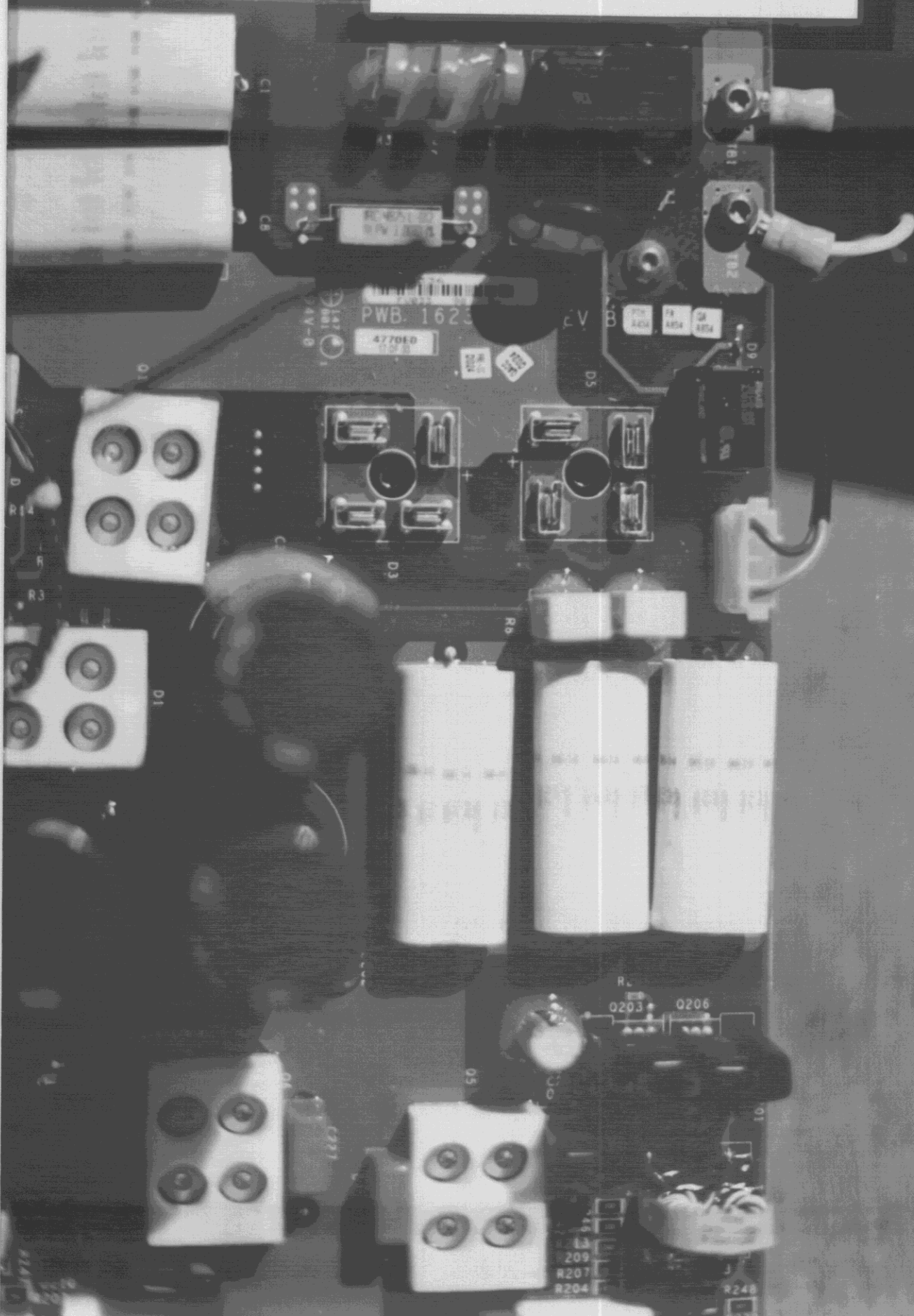
REAR VIEW OF MAIN POWER BOARD
FCC ID: NZM0603TR



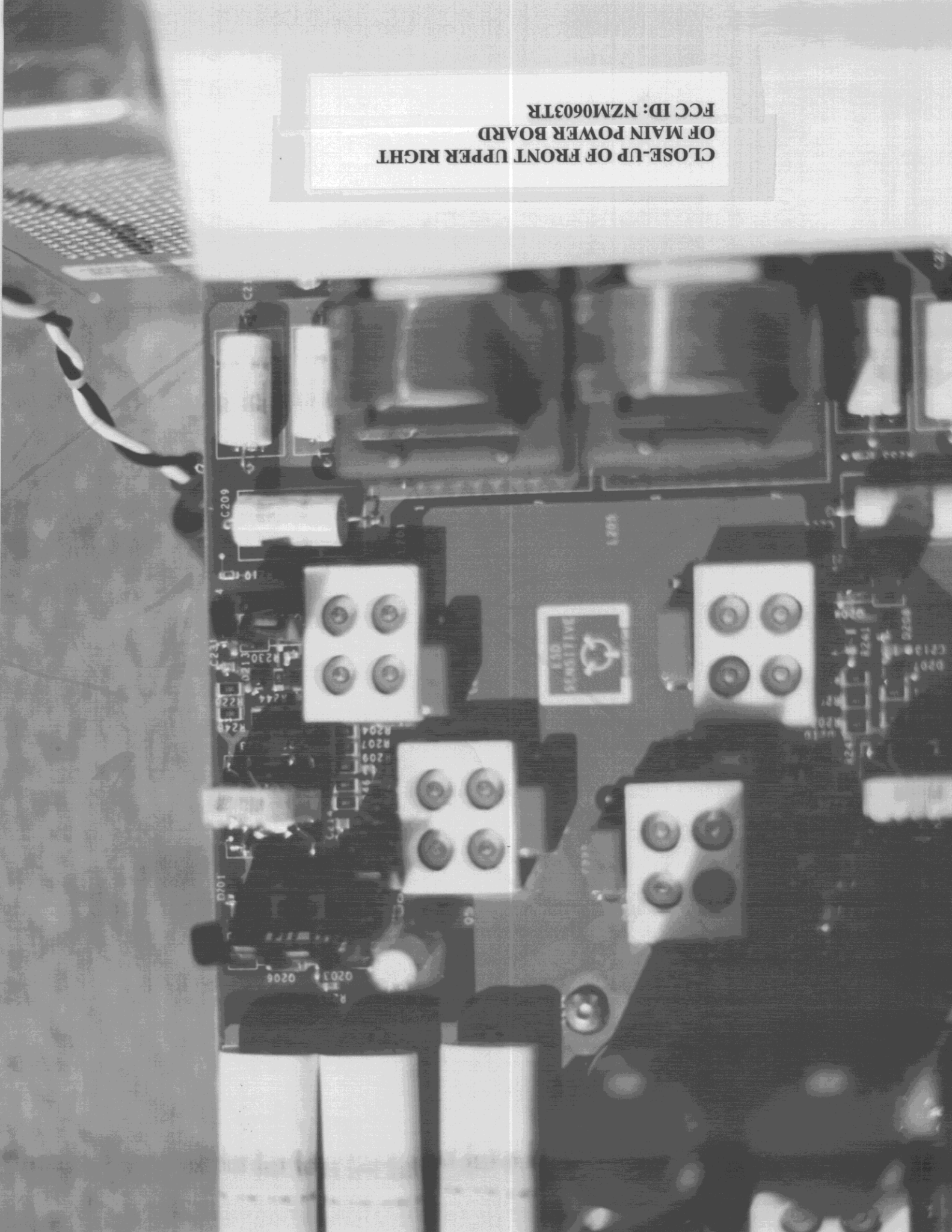


ANOTHER VIEW OF MAIN POWER BOARD
FCC ID: NZM0603TR

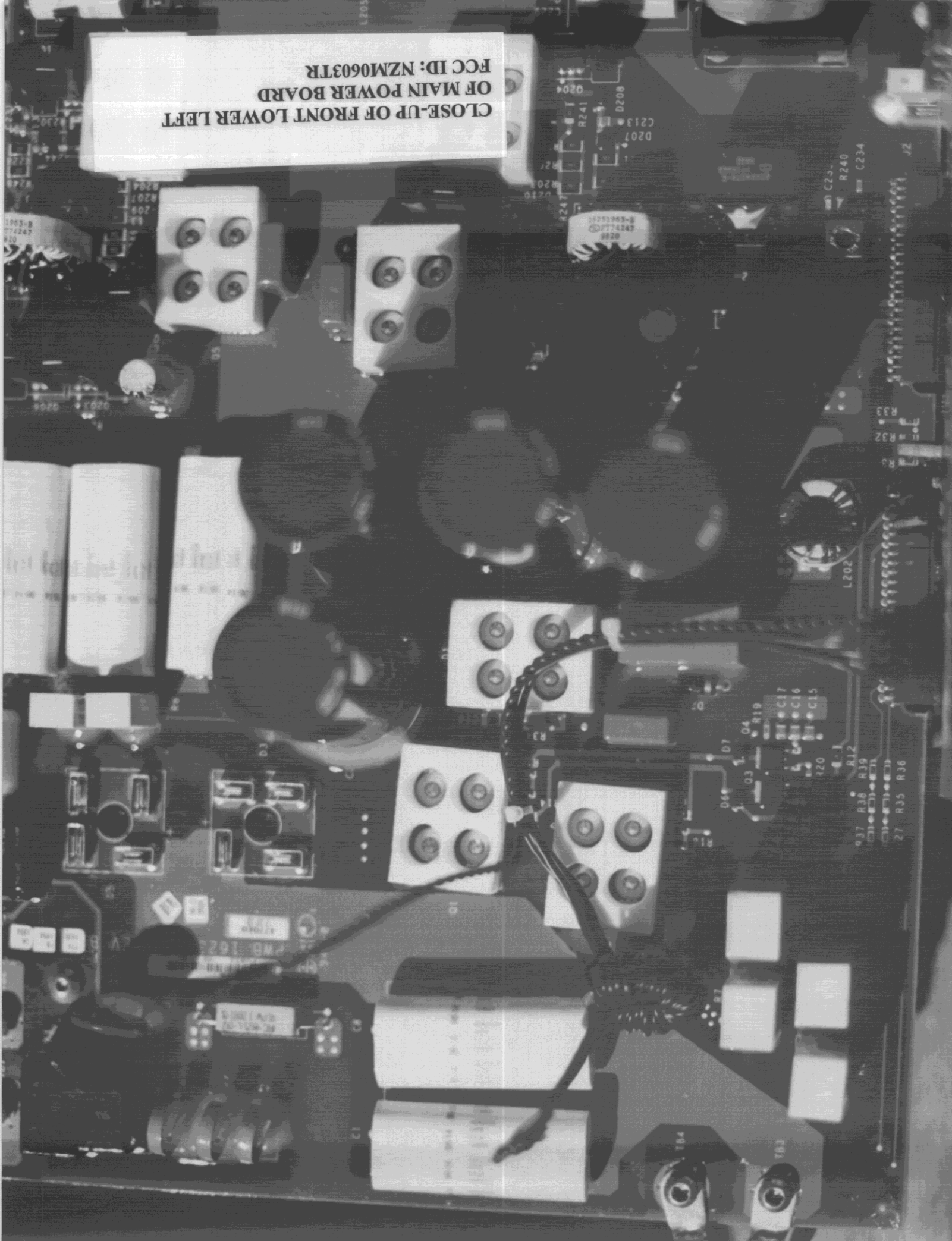
CLOSE-UP OF FRONT UPPER LEFT
OF MAIN POWER BOARD
FCC ID: NZM0603TR



CLOSE-UP OF FRONT UPPER RIGHT
OF MAIN POWER BOARD
FCC ID: NZM0603TR

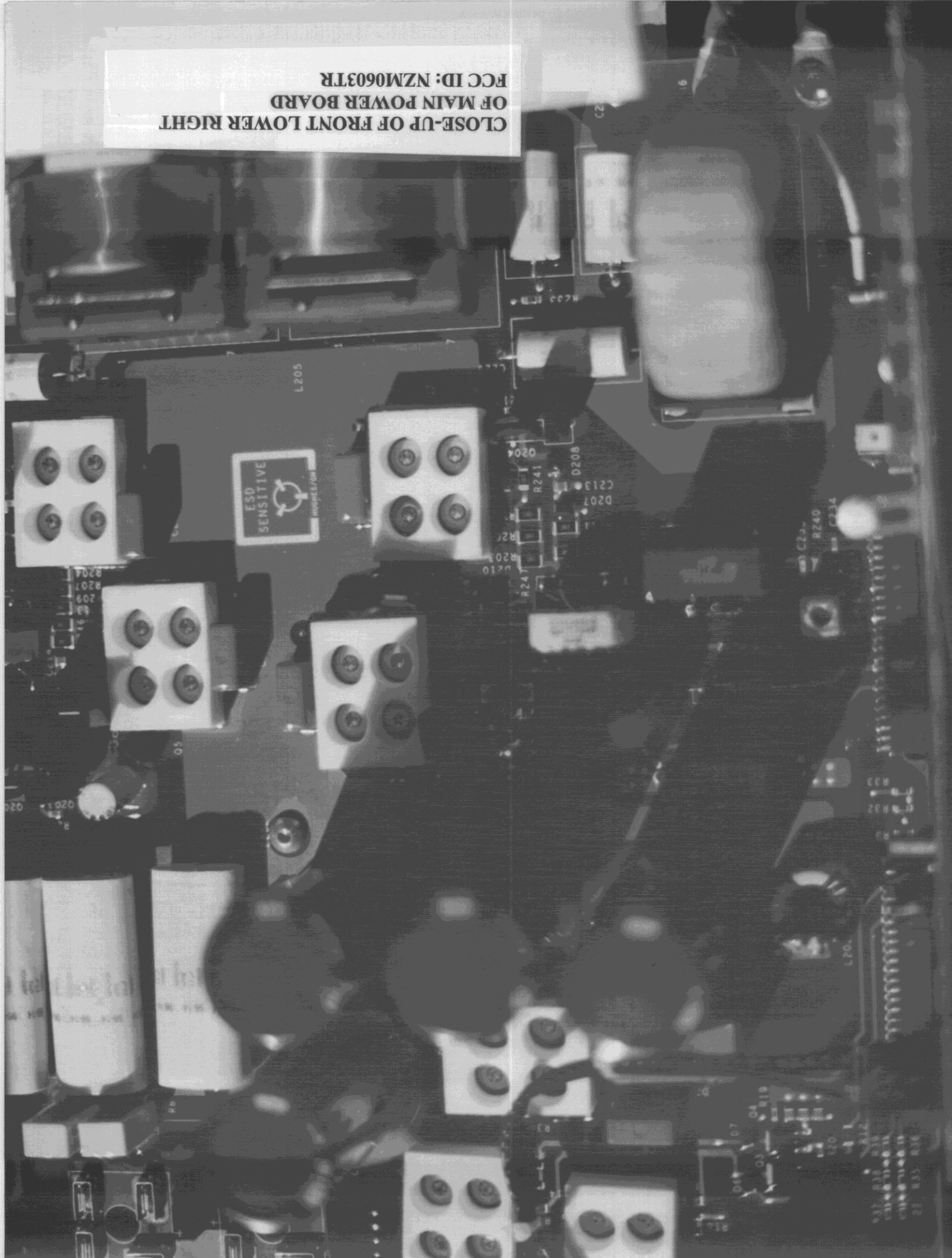


CLOSE-UP OF FRONT LOWER LEFT
OF MAIN POWER BOARD
FCC ID: NZM0603TR



CLOSE-UP OF FRONT LOWER RIGHT
OF MAIN POWER BOARD

FCC ID: NZM0603TR



**SIDE VIEW OF MAIN POWER BOARD
FCC ID: NZM0603TR**

