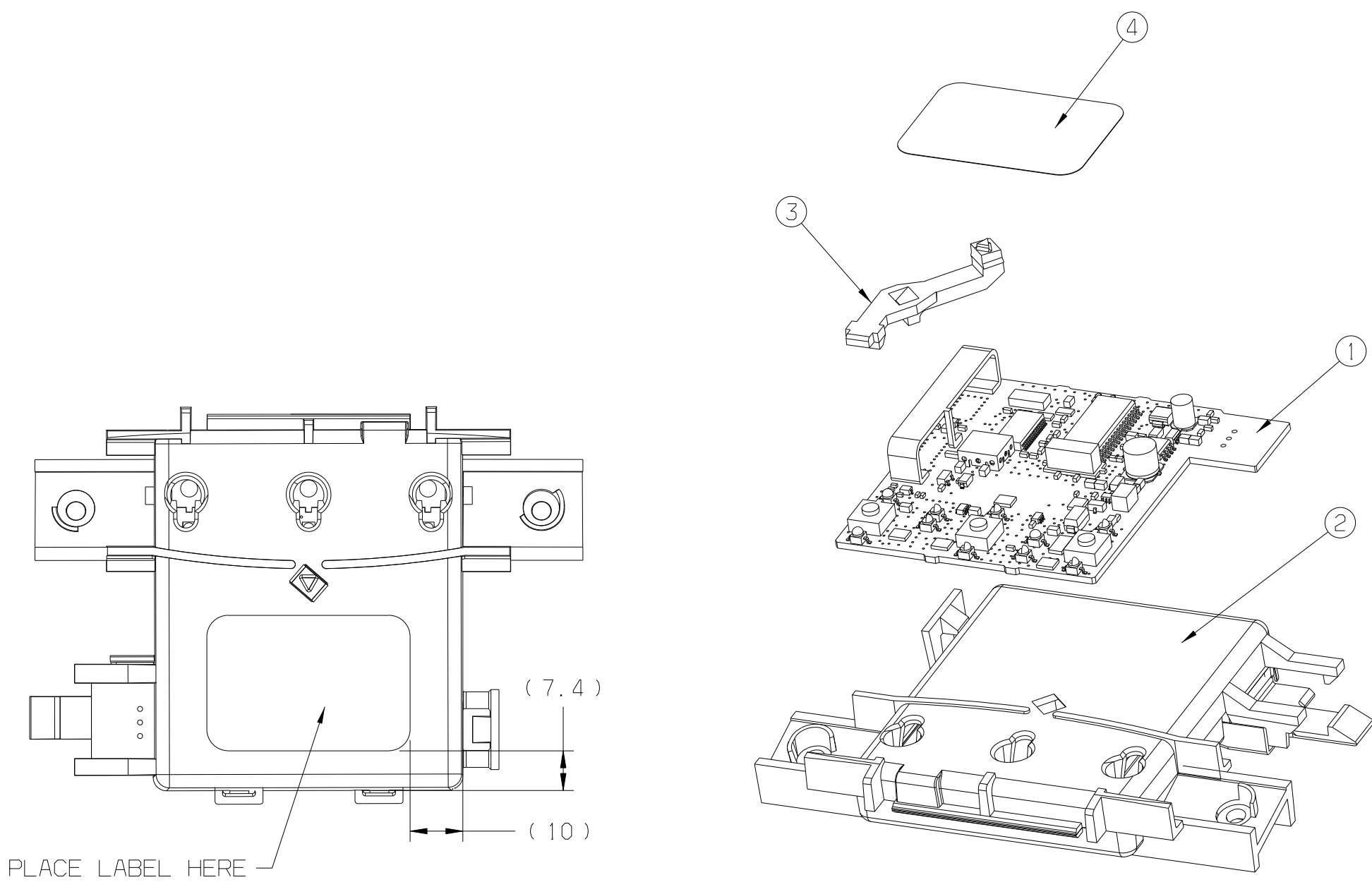
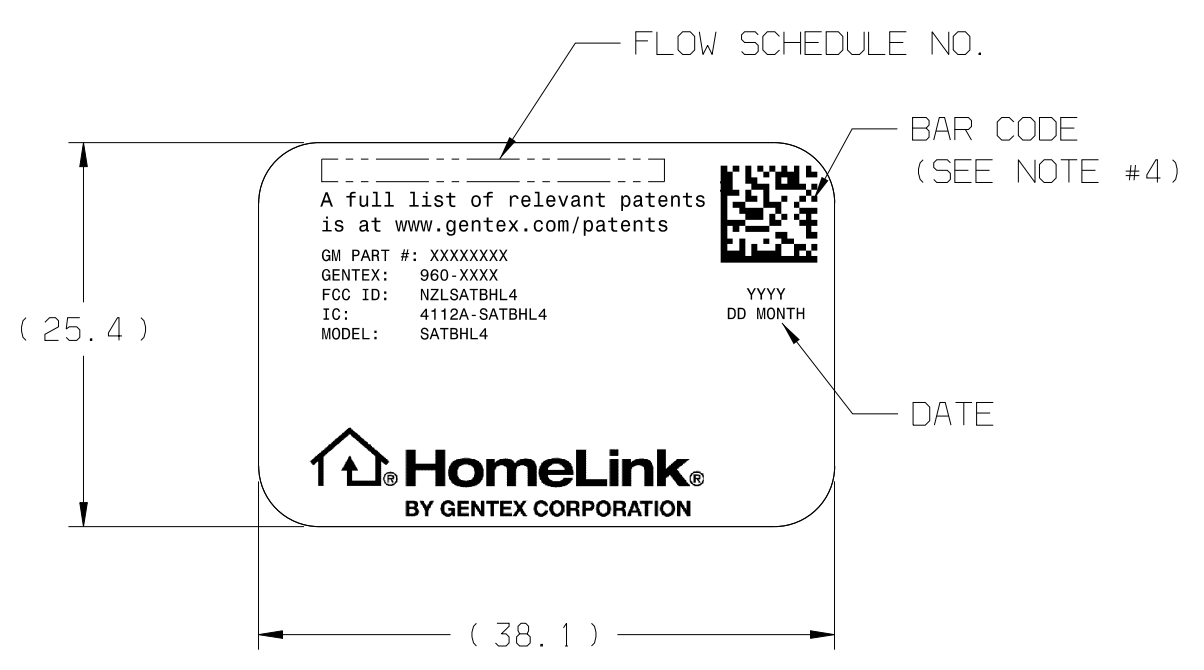


REVISION HISTORY				
REV	DESCRIPTION	BY/DATE	ECO NO.	APPROVED
AAA	RELEASE TO PRODUCTION FROM JCI DWG. 1824086 REV. 9 AND PART 2191622 REV. 1 AND 2219903 REV. 2	CDP 12/16/13	-	-



ISOMETRIC REFERENCE VIEW



LABEL VIEW
SCALE: 2:1

QTY	QTY	ITEM	DESCRIPTION	GENTEX PART NO.
1	1	5	LABEL, BAR CODE 4X6 (NOT SHOWN)	375-0369-000
1	1	4	LBL, STOCK 1.0 x 1.5	375-0765-000
1	1	3	LIGHT PIPE, GM TRUCK HMLK	343-0323-000
1	1	2	HSG, HMLK GM TRUCK	340-1319-000
1	1	1	SA PCB, GM MY09 QT BLUE BACKLIGHT	705-2302-001
1	1	1	SA PCB, GM TB MY09	705-2304-001

AAA	FINAL ASM, GM QT MY09, BLUE LAGOON BKLT			
AAA	FINAL ASM, HMLK GM TB QT MY09			
960-0058		960-0057		
22767189		20996504		
2		1		

NOTES:

- INDIVIDUAL COMPONENTS ON PCB ASSEMBLY ARE FOR REFERENCE ONLY.
- ADHESIVE LABEL FORMAT AND INFORMATION IS TO MATCH AS SHOWN IN THE LABEL VIEW(S) AND BOM.
- ASSEMBLY MUST COMPLY WITH FMVSS 302 & CMVSS 302.
- THE BAR CODE CONTAINS THE FOLLOWING; 'PL' FOLLOWED BY AN 8-DIGIT BAR CODE. AN EXAMPLE IS BELOW; PL12345678
- ASSEMBLY MUST COMPLY TO TEST SPECIFICATION TDE-ELE-154.
- LIGHT PIPE SHALL BE FULLY SNAPPED INTO HOUSING BEFORE ENCLOSING THE PCB ASM.
- LABEL SHALL NOT COVER OPENINGS IN THE HOUSING OR FUNCTIONAL ITMES.
- PRINT CORRESPONDING GM PART NUMBER FROM BOM CHART AT LOCATION INDICATED.
- REFERENCE IPC-A-610 CLASS 2 FOR ASSEMBLY PRACTICES AND PROCEDURES, UNLESS OTHERWISE SPECIFIED.

GENTEX CORPORATION 600 NORTH CENTENNIAL ST
ZEELAND, MICHIGAN 49464
(616) 772-1800

TITLE
FINAL ASM, HMLK, GM TB QT MY 09

NVS SPECIFIES FEATURES REQUIRING SPECIAL CONSIDERATION. SEE CONTROL PLAN. INTERPRET DIMENSIONS AND TOLERANCE PER ASME Y14.5M - 1994	SIZE D	DWG NO. 960-C	REV AAA
	MATERIAL SEE COMP DWGS.	MASS (CALCULATED) 38.7 g	
THIRD ANGLE PROJECTION 	DRAWN BY CPOLLACK	DATA FORMAT CATIA V5	
	SCALE 1:1 & AS NOTED	DATE 12/10/2013	SHEET 1 OF 1