

LABEL EXAMPLE

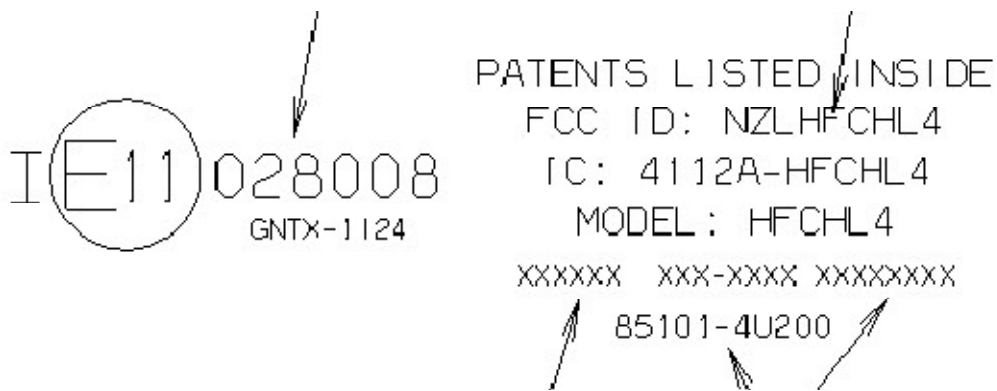
For additional Information refer to picture below.

The FCC Identifier assigned to the EUT is FCC ID: NZLHFCHL4. This number will be laser etched to the rear of the mirror housing as displayed below.

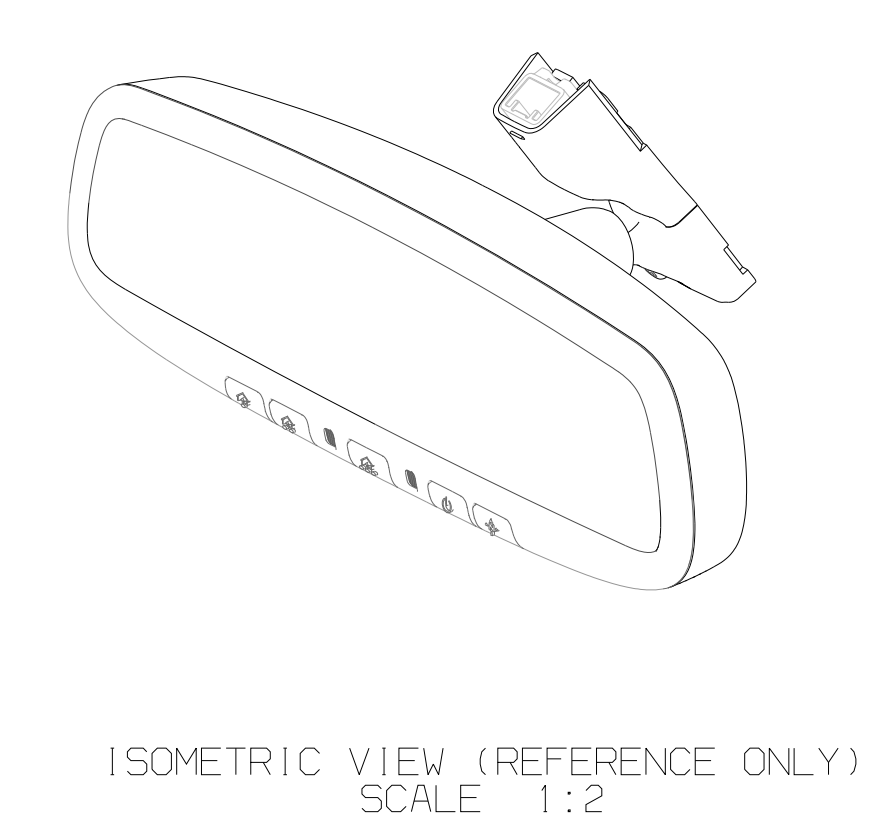
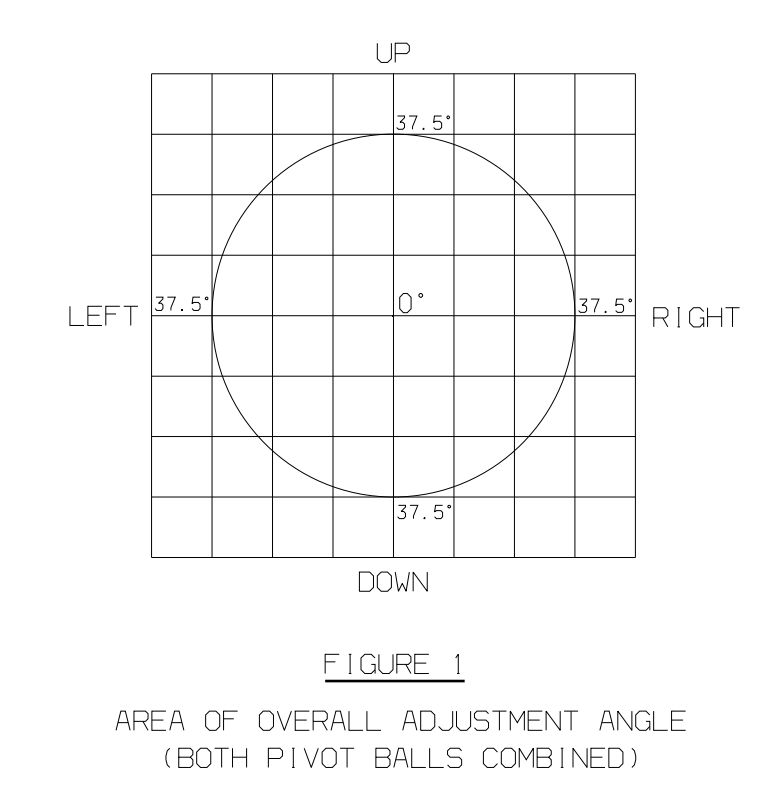
Because of the size and location of the transmitter portion of the product as well as the cost of laser etching the additional text, the following statements will appear in the user's manual in accordance with section 15.19.(a)(5). Refer to the user manual for the entire text.

**From Section 15.19 Information to the user:**

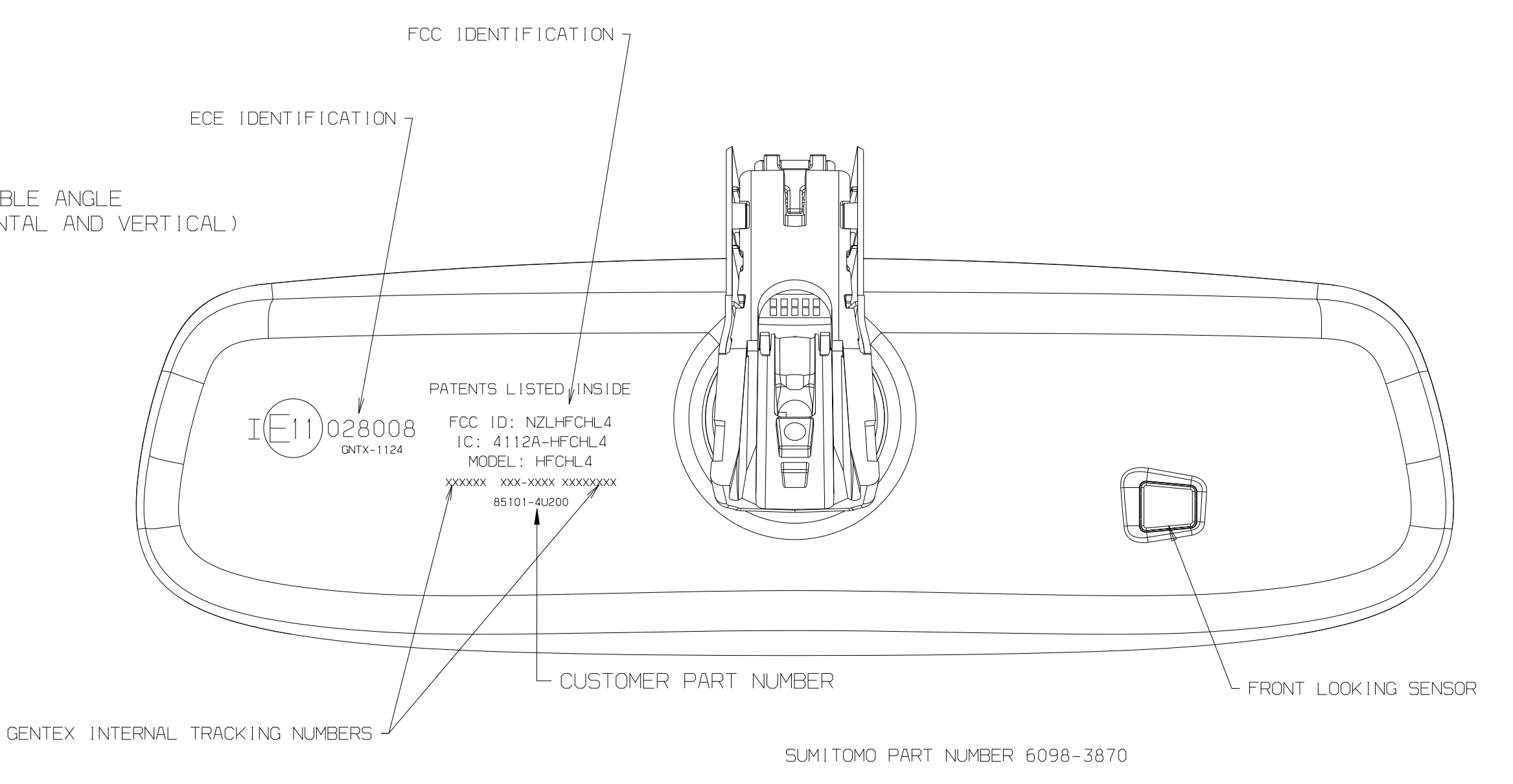
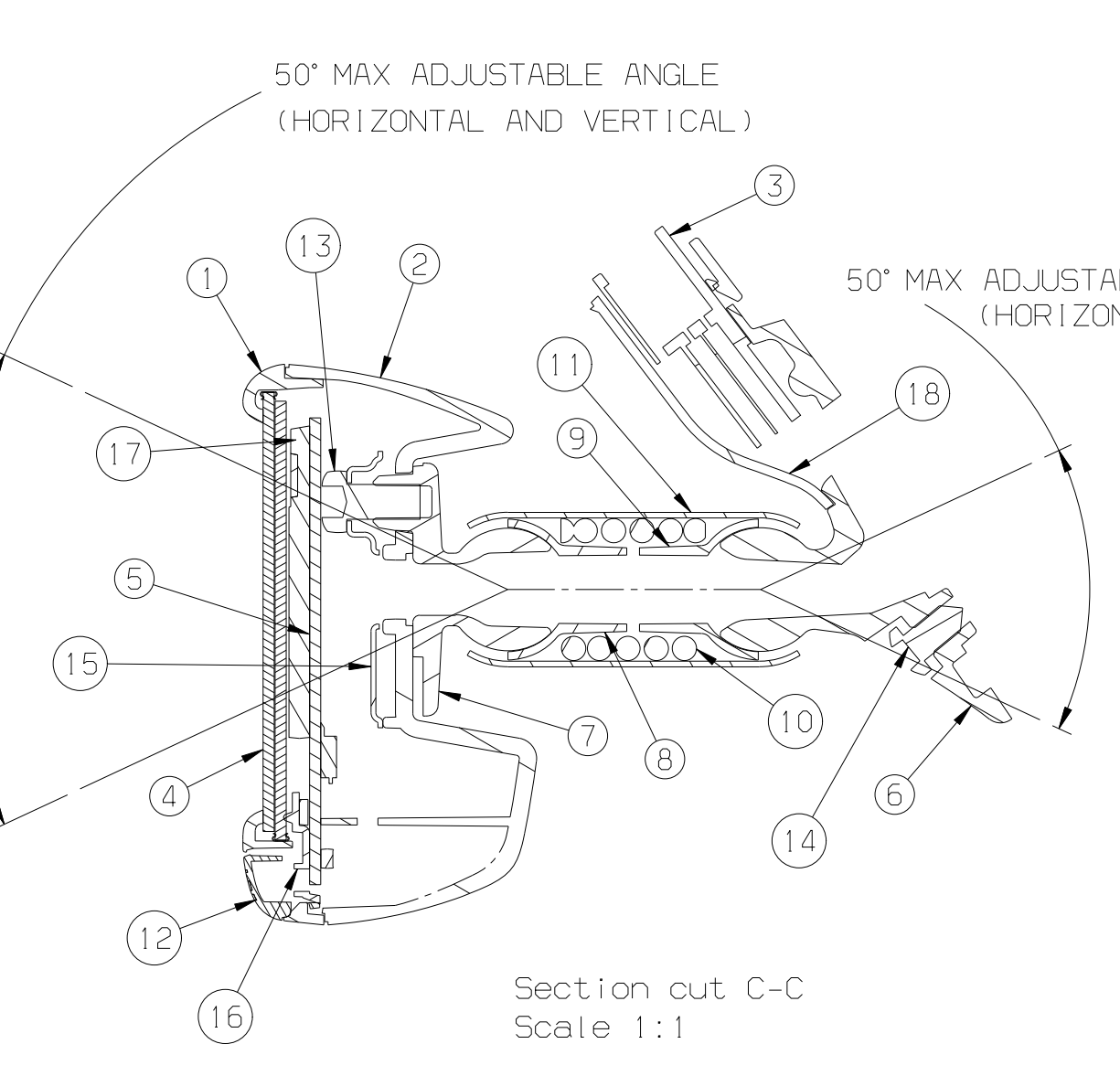
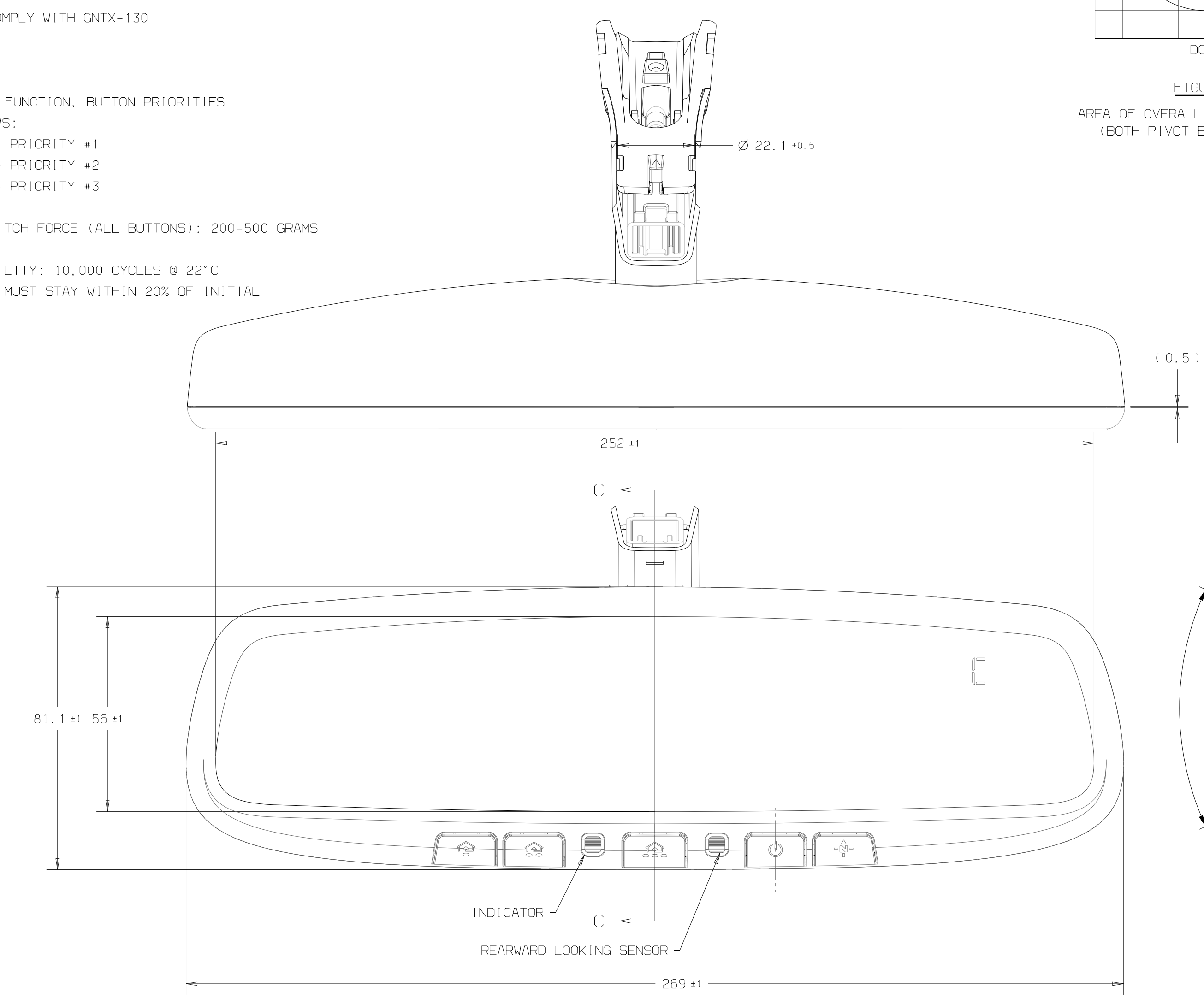
**NOTE: This device complies with Part 15 of the FCC Rules. Operation is subject to the following two conditions: (1) This device may not cause harmful interference, and (2) this device must accept any interference received, including interference that may cause undesired operation.**



- NOTES:
- THIS PRODUCT IS TO CONFORM TO FMVSS 111 AND 302.
  - THIS PRODUCT TO CONFORM TO HMC EC MIRROR SPECIFICATIONS ES85102-00, ES85101-03, ES85101-04, AND ES96200-00
  - EC Inside rearview mirror must comply with ES85102-00-C with the following exceptions:
    - Section 5.1.1 Responsiveness must be 15% - 48% at room temperature, -30C and +65C.
  - PAINT ON PIVOT BALL ALLOWED TO BE SCRATCHED DUE TO MIRROR ADJUSTMENT.
  - TEXTURE TO COMPLY WITH QNTX-130
  - COLOR: BLACK
  - FOR HOMELINK FUNCTION, BUTTON PRIORITIES ARE AS FOLLOWS:
    - 1 DOT - PRIORITY #1
    - 2 DOTS - PRIORITY #2
    - 3 DOTS - PRIORITY #3
  - ACTUATION SWITCH FORCE (ALL BUTTONS): 200-500 GRAMS
  - SWITCH DURABILITY: 10,000 CYCLES @ 22°C SWITCH FORCE MUST STAY WITHIN 20% OF INITIAL

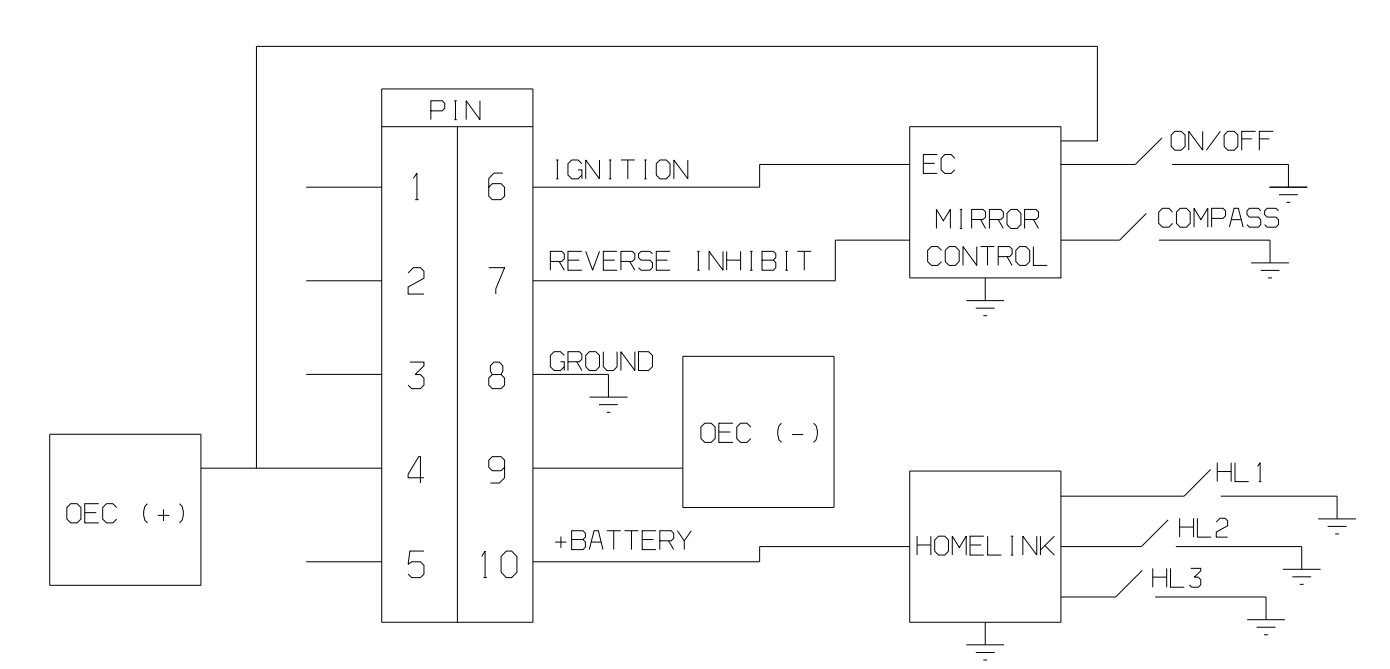


REVISION HISTORY		
REV	DESCRIPTION	BY/DATE
A	RELEASE TO PRODUCTION	05/03/2012



NO.	PART NAME	MATERIAL	ALT. MATERIAL	TEXTURE	COMPLIES TO HMC SPEC
1	FRONT HOUSING	ABS+PC, GE LG9000		QNTX-130	MS 210-05
2	REAR HOUSING	ABS+PC, GE LG9000		QNTX-130	MS 210-05
3	SUMITOMO CONNECTOR	POLYBUTYLENE TEREPHTHALATE			
4	P.C.M. ASS'Y				
5	P.C.B. ASS'Y				
6	PIVOT BALL	ZINC SAE 925			MS 192-01
7	MIRROR END PIVOT CUP	ZINC SAE 925			MS 192-01
8	MOUNT END PIVOT CUP	HIGH DENSITY POLYETHYLENE			
9	STEM ASSEMBLY SPRING	POLYPROPYLENE			
10	STEM ASSEMBLY SCREW	STAINLESS STEEL 302	MUSIC WIRE-ZINC		
11	STEM TUBE	SAE A46013-18 AL			
12	HARD CAP BUTTONS	ABS+PC, GE LG9000			
13	STEM ASSEMBLY SCREW	C1022 STEEL OH			
14	MOUNTING SCREW	C1022 STEEL OH			
15	MOUNTING WASHER	AISI 1050 STEEL			
16	ELASTOMER SWITCH	SILICON RUBBER			MS 210-05
17	ELEMENT SUPPORT PLATE	POLYPROPYLENE	ABS+PC	QNTX-130	MS 210-05
18	LOWER WIRE COVER	ABS+PC, GE LG9000		QNTX-130	MS 210-05

PIN	FUNCTION	CURRENT
1	OPEN	N/A
2	OPEN	N/A
3	OPEN	N/A
4	DEC (+)	300mA MAX PER DEC
5	OPEN	N/A
6	+12V DC SWITCHED (IGNITION)	1500 mA MAX
7	REVERSE INHIBIT	15 mA MAX
8	GROUND	1500 mA MAX
9	DEC (-)	300mA MAX PER DEC
10	BATTERY +	150 mA MAX



GENTEX PIN OUT	FUNCTION	HYUNDAI/KIA PIN OUT	CURRENT
1	OPEN	5	
2	OPEN	4	
3	OPEN	3	
4	DEC (+)	2	300mA MAX PER DEC
5	OPEN	1	
6	IGNITION	10	1500mA MAX
7	REVERSE INHIBIT	9	150mA MAX
8	GROUND	8	1500mA MAX
9	DEC (-)	7	300mA MAX PER DEC
10	BATTERY	6	150mA MAX

MATING PART	SUMITOMO MATING PART NUMBER
CONNECTOR	6098-3910

DWG NO	REV	DESCRIPTION	GENTEX PART NUMBER	ECE NUMBER
85101-4U200	A	2-BALL THRU WIRE COMPASS HOMELINK MIRROR	905-3677	I E11 028008
85101-4U200P2	A	2-BALL THRU WIRE COMPASS HOMELINK MIRROR W/ STATIC LABEL	905-3678	I E11 028008

**GENTEX** 600 NORTH CENTENAL AVE  
ZEELAND MICHIGAN 49664  
CORP-CRRA T T CN (616) 772-9800

INTERPRET DIM AND TOL PER ASME Y14.5M-1994  
THIRD ANGLE PROJECTION

EXPLANATIONS REQUIRING SPECIAL CONSIDERATION, SEE CONTROL PLAN.  
DRAWN BY J. KELLEY  
DATA FROM CATIA

TITLE: 2-BALL THRU WIRE COMPASS HOMELINK MIRROR  
SIZE: 85101-4U200  
SCALE: 1:1 DATE: 05/03/2012 SHEET: 1 OF 1

- 주기
- 작업 범위 : 본 도면은 TFE MRR ASSY - 1/S RR VIEW(ECM+COMP+H/LINK4) 에 대한 승인도임.
  - 작업지역 및 관련번호
  - 번이 : FMVSS 111, FMVSS 302, CMVSS 111, CMVSS 302를 만족할 것.
  - 승인 요구 사항
  - 실제인증시험 : HMC 시험팀 JURY팀(TDP13-05) 시 7+점 이상일 것.
  - HMC SPEC 요구사항
  - MRR ASSY에 대하여 TABLE 1을 만족할 것.
  - EC에 대하여 ES85102-00을 만족할 것.
  - H/LINK에 대하여 ES85101-03을 만족할 것.
  - COMPASS에 대하여 ES85101-04을 만족할 것.
  - EMC/EMI에 대하여 ES96200-00을 만족할 것.
  - 재질 규는 MS201-01에 따른 것.
  - 출금속 시용 규치에 대하여 MS201-02를 만족할 것.
  - PLASTIC 성형품에 대하여 MS210-05-A를 만족할 것.
  - 난연성에 대하여 MS300-08를 만족할 것.
  - 방재 시험시 MS300-34에 따르고 3급이상 만족할것(PCB/GLASS 제외)
  - 산기안 및 이온화급 도금에 대하여 MS611-15(PFZr8-C)를 만족할 것.
  - 일반 요구 사항
  - ADC부품은 방산선 특급 시험KS D 0241에 통과부위미 2급 이상일 것.
  - PLASTIC 시용부품 및 DIE CASTING 부품은 SINK MARK, FLOW MARK, WELD LINE,BURR 등 인오에 유해한 결함이 없을 것.
  - CONNECTOR는 CONNECTOR 업체와 승인을 득할 것.
  - 승인 관련 사항
  - 승인시 제출 목록
  - 도면 : ASSY DR\* G
  - 샘플 : 승인용 샘플
  - 시험승인서 : 본 도면에 양기된 모든 시험 결과
  - 일체 승인 도면은 HR-EB-SG-018에 따른 것.

- NOTE
- APPLICATION RANGE : THIS DR'G IS APPROVAL DRAWING OF THE MIRROR ASSEMBLY OF INSIDE REAR VIEW FOR TFE-CARECM+COMP+H/LINK4).
  - APPLICATION REGION & RELATED REGULATION
  - NORTH AMERICA : MUST CONFORM TO FMVSS 111, FMVSS 302, CMVSS 111, CMVSS 302.
  - PERFORMANCE REQUIREMENTS
  - ACTUAL VEHICLE VIBRATION TEST - MUST BE MIN. 74 POINT CHECK AT JURY EVALUATION(SPEC NO. TDP13-05) BY HMC TEST DEPARTMENT.
  - HMC SPECIFICATION REQUIREMENTS
  - MUST MEET TABLE 1 FOR MIRROR ASSEMBLY.
  - MUST MEET ES85102-00 FOR EC.
  - MUST MEET ES85101-03 FOR HOME LINK.
  - MUST MEET ES85101-04 FOR COMPASS.
  - MUST MEET ES96200-00 FOR EMC/EMI.
  - MUST CONFORM TO MS201-01 FOR MARKING OF MATERIALS.
  - MUST MEET MS201-02 FOR PROHIBITION OF USE OF HEAVY METAL.
  - MUST MEET MS210-05-A FOR MOLDED PLASTIC PARTS.
  - MUST MEET MS300-08 FOR FLAMMABILITY RESISTANCE.
  - MUST CONFORM TO MIN. GRADE 3 OF MS300-34 FOR QDOR TEST(EXCEPT PCB/GLASS).
  - MUST CONFORM TO MS611-15(PFZr8-C) FOR ELECTRODEPOSITED ZINC AND ZINC ALLOY PLATING.
  - GENERAL REQUIREMENTS
  - MUST MEET MIN. 2ND CLASS ON RADIOGRAPHIC TEST OF KS D 0241 FOR ALUMINIUM DIE CASTINGS.
  - PLASTIC AND DIE CASTING COMPONENTS MUST NOT HAVE ANY DEFECT IN APPEARANCE SUCH AS SINK MARK, FLOW MARK, WELD LINE, AND BURR.
  - MUST OBTAIN THE CONNECTOR MAKER'S APPROVAL FOR CONNECTOR.
  - APPROVAL CONTENTS
  - SUBMITTED LIST
  - DRAWING : ASSEMBLY DRAWING
  - SAMPLES FOR APPROVAL
  - TEST REPORTS : ALL RESULTS OF TESTS WRITTEN IN THIS DRAWING
  - VENDOR'S DRAWING FOR APPROVAL MUST CONFORM TO HR-EB-SG-018.

승인도  
APPROVED DRAWING

현대자동차주식회사 HYUNDAI MOTOR COMPANY  
기아자동차주식회사 KIA MOTORS CORPORATION

DATE: 2012-06-18

SCALE: DO NOT SCALE

560.00

85101-4U200

ACN7

속소불기 CAD면도