

- 1: Antenna model: Inverted F antenna (IFA)
- 2: Antenna type: PCB submerged plate antenna
- 3: Gain: 1.5dB
- 4: Antenna dimensions are shown in Figure 1

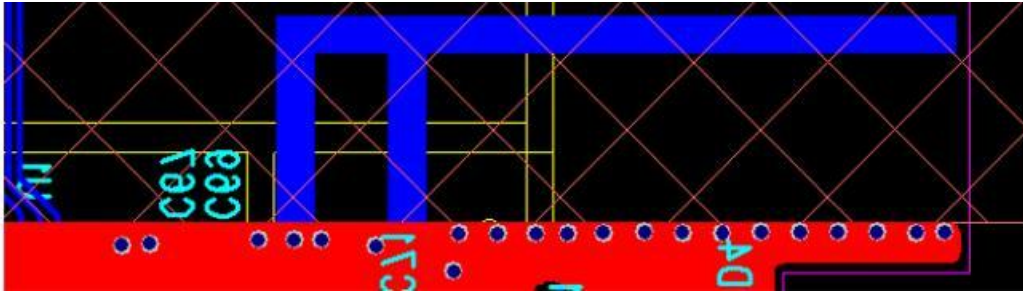


Figure 1 **18.2*5.5mm**

5: Antenna efficiency

Freq (MHz)	Effi (%)	Effi (dB)	Gain (dBi)
2400	36.8	-4.3	0.8
2410	40.3	-3.9	1.3
2420	40.4	-3.8	1.4
2430	41.6	-3.8	1.5
2440	40.5	-3.7	1.4
2450	40.7	-3.7	1.4
2460	41.2	-3.8	1.5
2470	40.0	-4	1.4
2480	38.0	-4.2	1.1
2490	35.9	-4.5	0.9
2500	34	-4.7	0.7

6. The antenna performance is shown in Figure 2. The operating band covers the entire 2.4G ISM band.

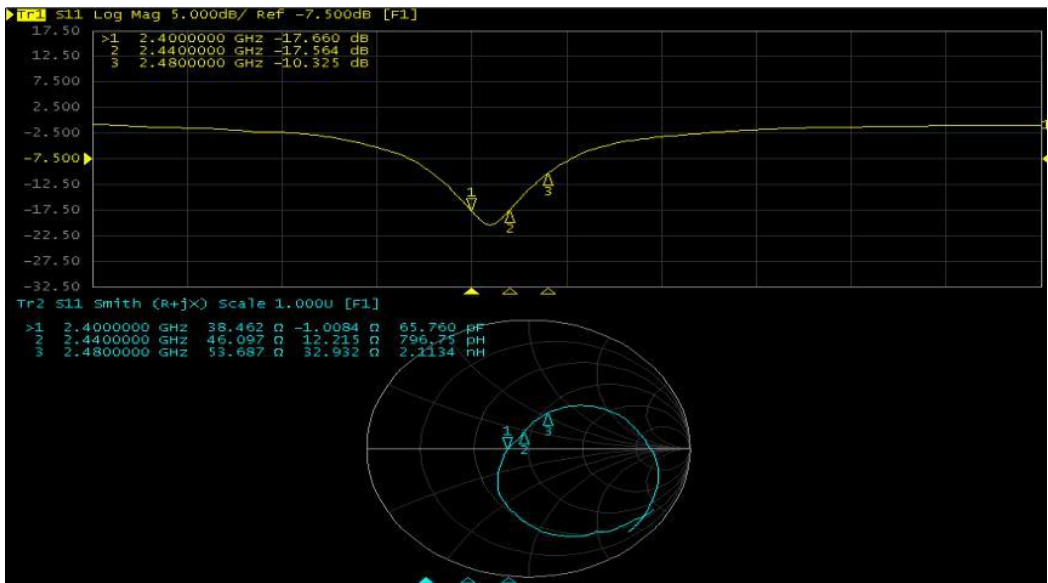


Figure 2

7:2D and 3D gains are as follows, reaching around 1.5dB:

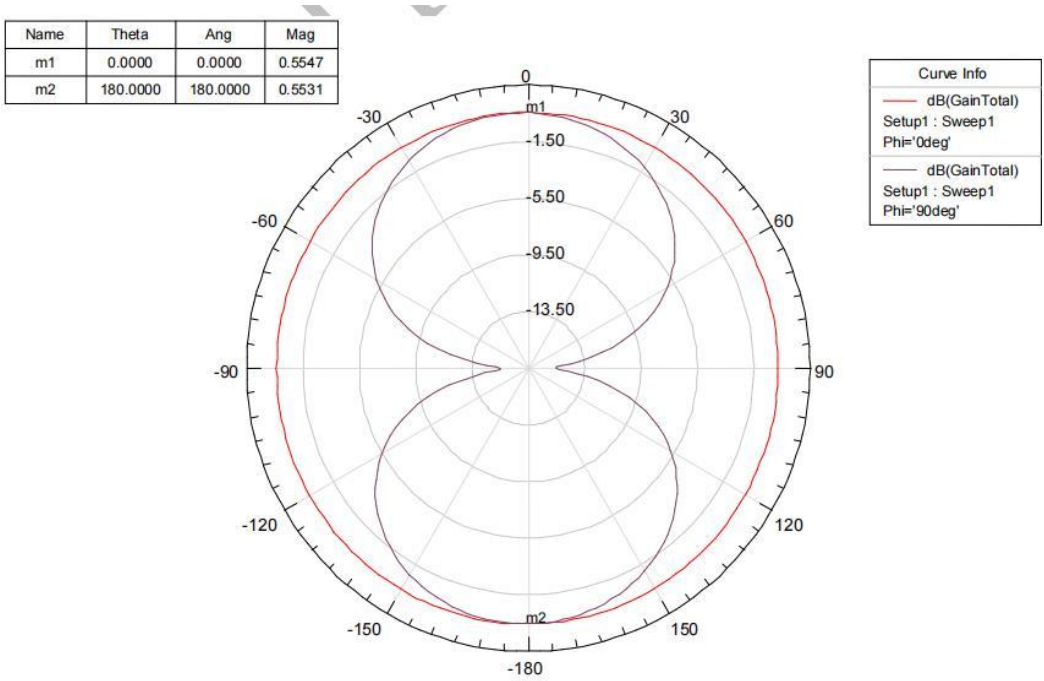


Figure 3

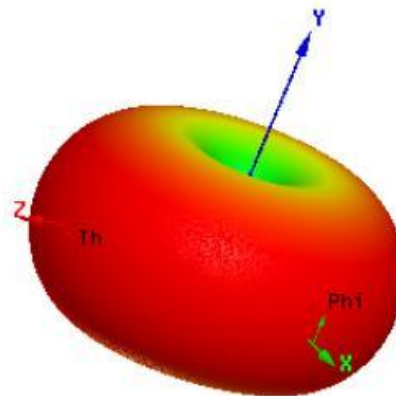
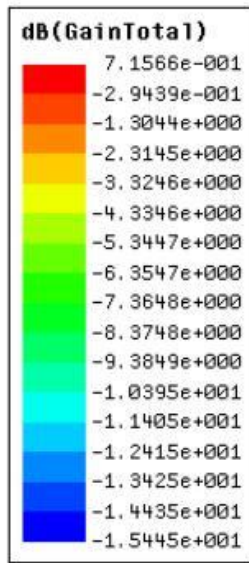


Figure 4 Antenna gain