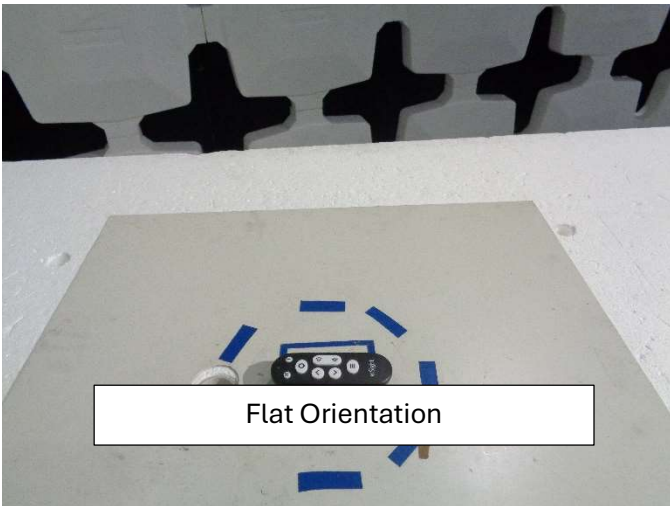
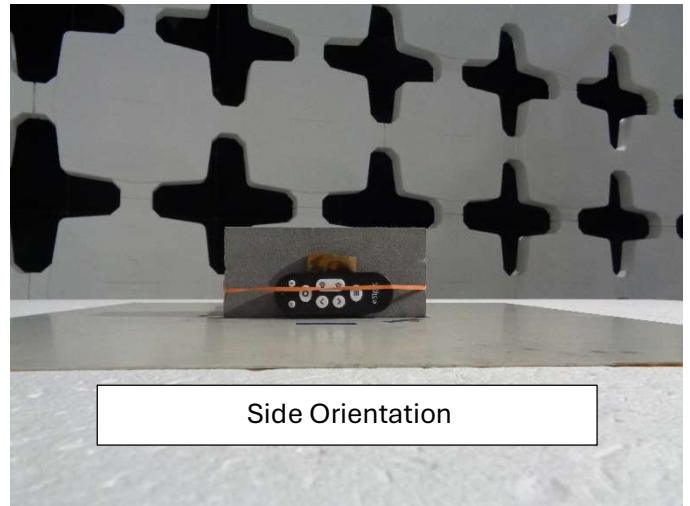


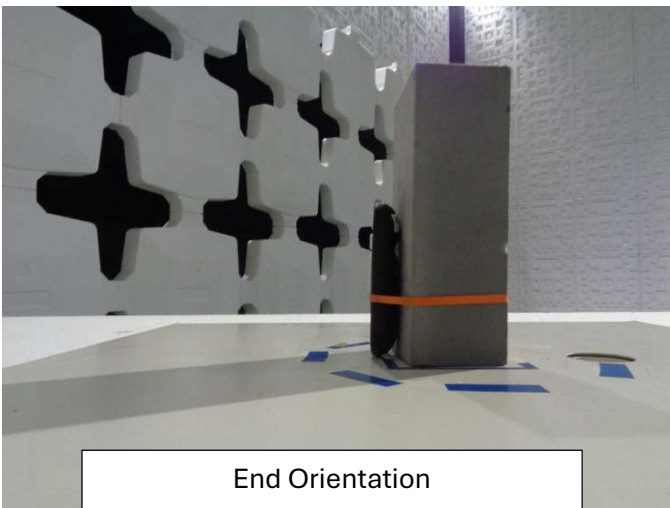
## Part 15C Setup Pictures



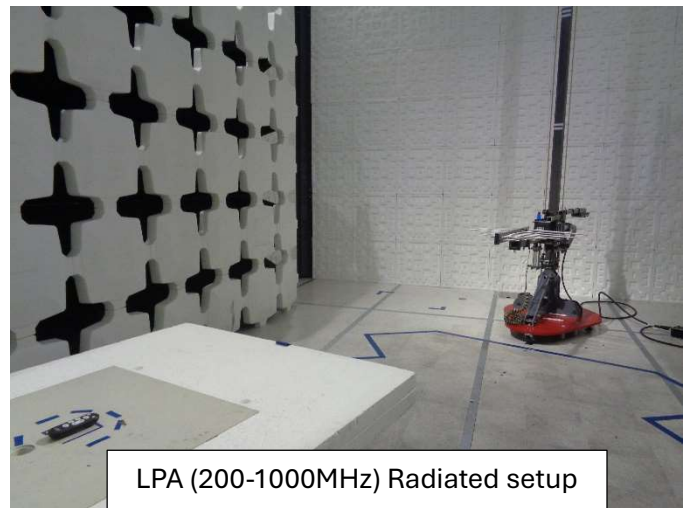
Flat Orientation



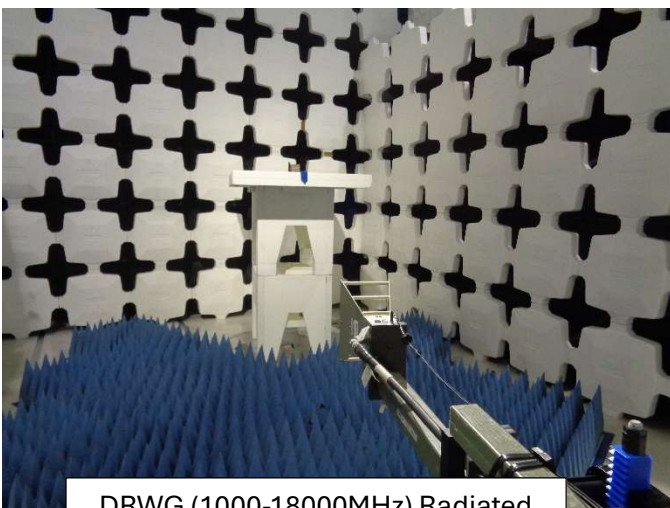
Side Orientation



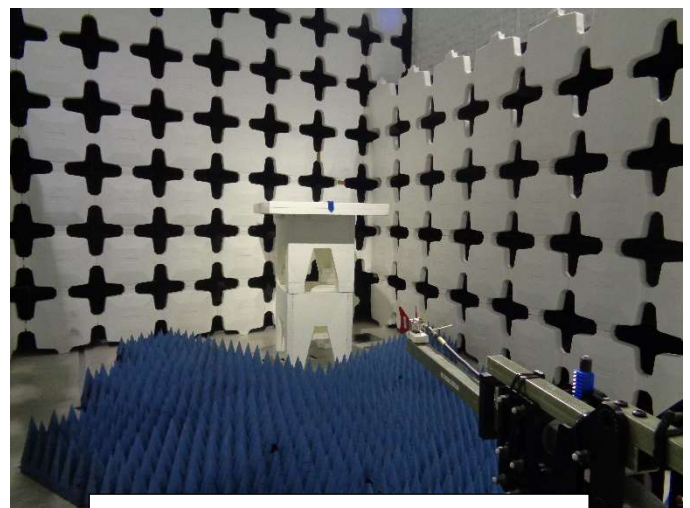
End Orientation



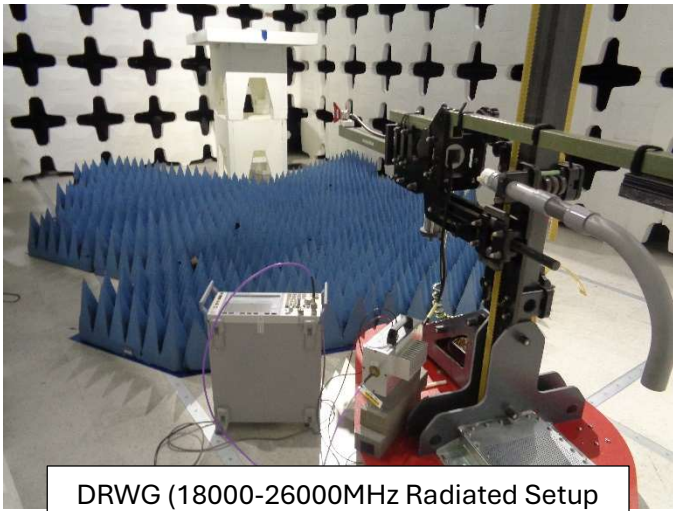
LPA (200-1000MHz) Radiated setup



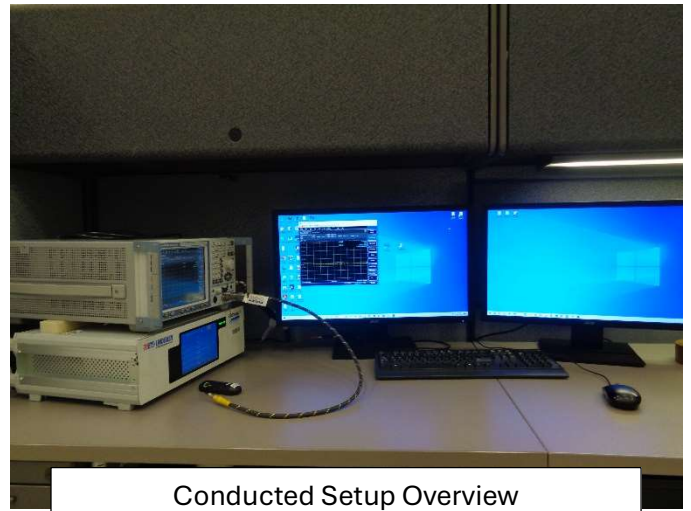
DRWG (1000-18000MHz) Radiated Setup



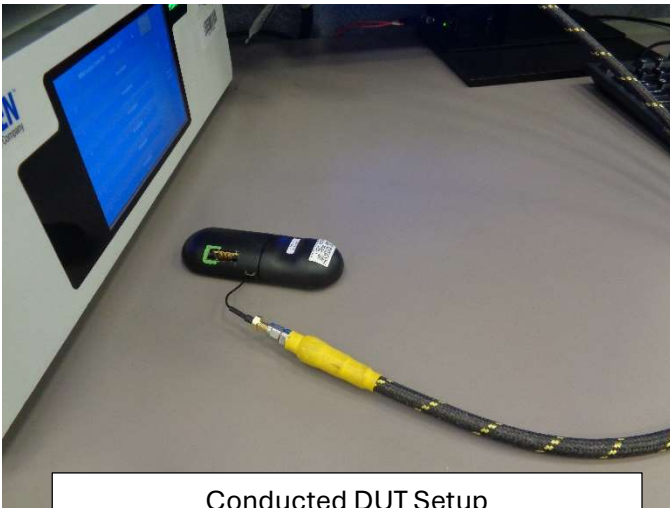
DRWG (18000-26000MHz) Radiated Setup Overview



DRWG (18000-26000MHz Radiated Setup)



Conducted Setup Overview



Conducted DUT Setup